

# CAPACITY PLAN WITH DWT SCALE

## SUMMARY TABLE FOR TANK CAPACITY

| COMPARTMENT      | LOCATION (FR. NO.) | CAPACITIES            |             | 98% FULL             |                      | MAX. WT OF INERTIA (mt) |
|------------------|--------------------|-----------------------|-------------|----------------------|----------------------|-------------------------|
|                  |                    | VOLUME 100% FULL (m³) | WEIGHT (mt) | L.C.G. FROM A.P. (m) | V.C.G. FROM B.L. (m) |                         |
| NO.1 C.O.T. (P)  | 103 - 111          | 7230.1                | 7944.3      | 227.193              | 15.214               | 5758                    |
| NO.2 C.O.T. (S)  | 103 - 111          | 7230.1                | 7944.3      | 227.193              | 15.214               | 5758                    |
| NO.3 C.O.T. (P)  | 94 - 103           | 12702.6               | 12488.6     | 106.413              | 15.029               | 15739                   |
| NO.4 C.O.T. (S)  | 94 - 103           | 12702.6               | 12488.6     | 106.413              | 15.029               | 15739                   |
| NO.5 C.O.T. (P)  | 87 - 94            | 13974.6               | 13965.1     | 106.585              | 15.014               | 18208                   |
| NO.6 C.O.T. (S)  | 87 - 94            | 13974.6               | 13965.1     | 106.585              | 15.014               | 18208                   |
| NO.7 C.O.T. (P)  | 80 - 87            | 13974.6               | 13965.1     | 135.575              | 15.014               | 18208                   |
| NO.8 C.O.T. (S)  | 80 - 87            | 13974.6               | 13965.1     | 135.575              | 15.014               | 18208                   |
| NO.9 C.O.T. (P)  | 73 - 80            | 13974.6               | 13965.1     | 104.565              | 15.014               | 18208                   |
| NO.10 C.O.T. (S) | 73 - 80            | 13974.6               | 13965.1     | 104.565              | 15.014               | 18208                   |
| NO.11 C.O.T. (P) | 66 - 73            | 13840.0               | 13583.2     | 73.650               | 15.107               | 18208                   |
| NO.12 C.O.T. (S) | 66 - 73            | 13840.0               | 13583.2     | 73.650               | 15.107               | 18208                   |
| NO.13 C.O.T. (P) | 61 - 66            | 2919.9                | 2861.5      | 54.641               | 15.528               | 4022                    |
| NO.14 C.O.T. (S) | 61 - 66            | 2919.9                | 2861.5      | 54.641               | 15.528               | 4022                    |
| SUB TOTAL        |                    | 167250.6              | 164106.8    |                      |                      |                         |

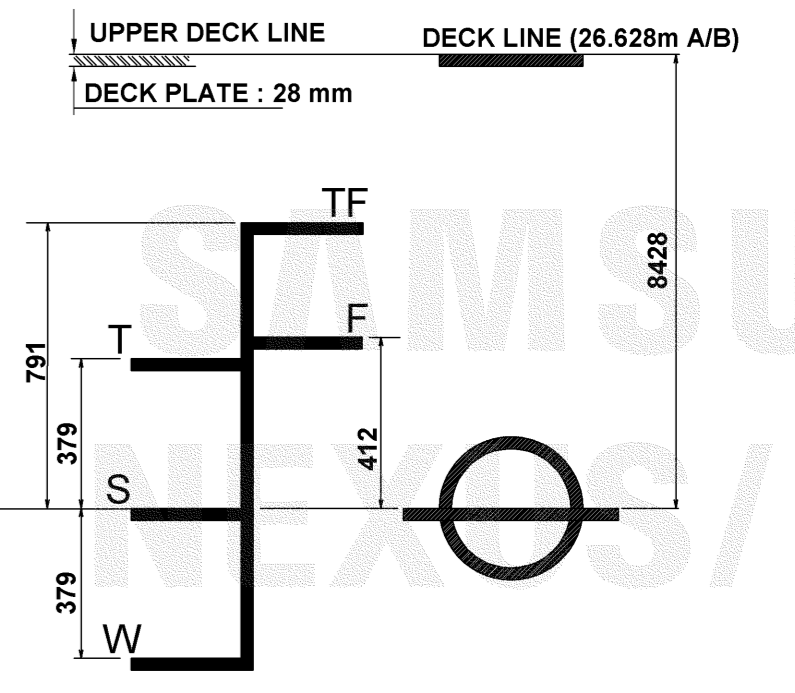
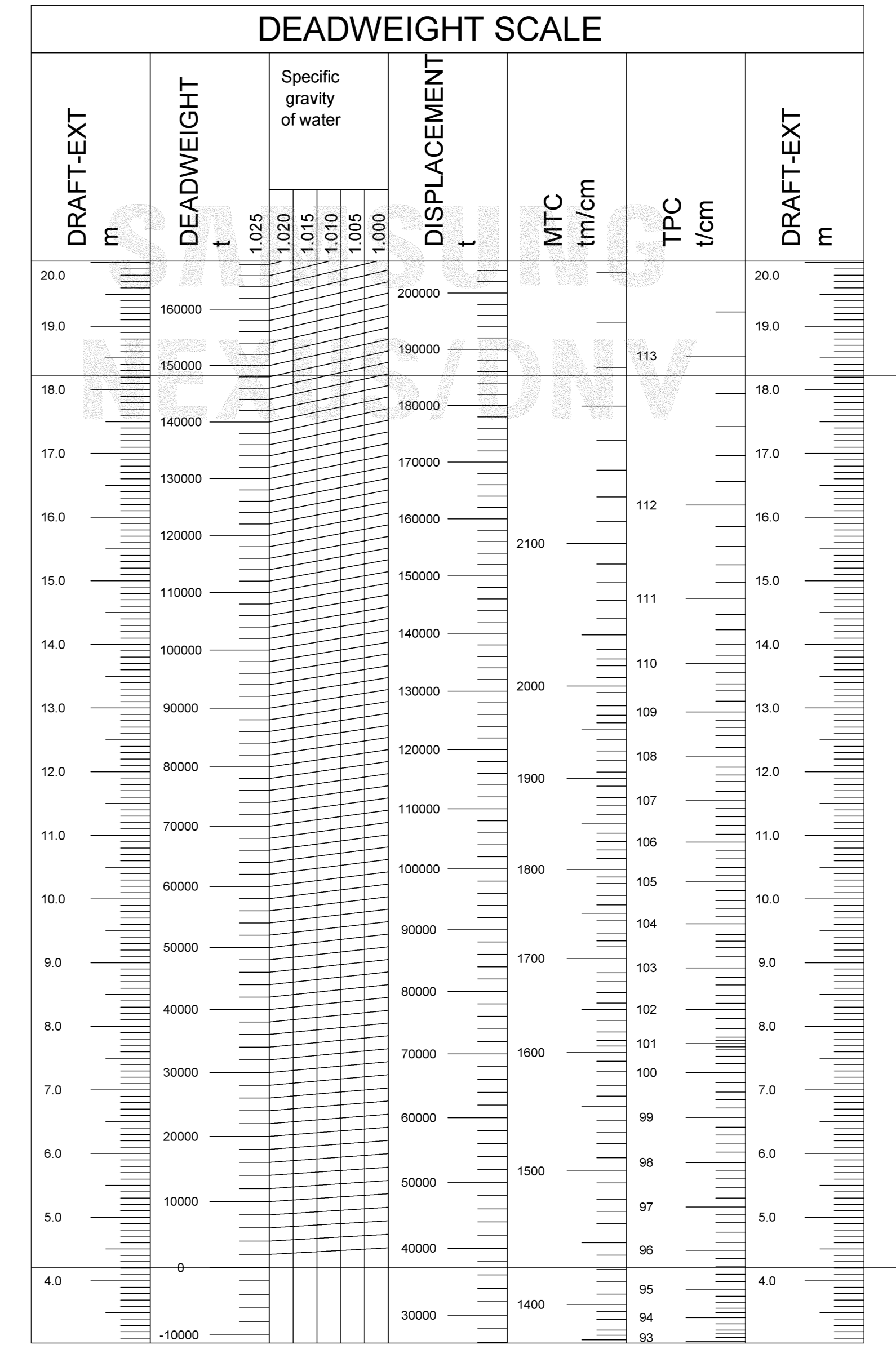
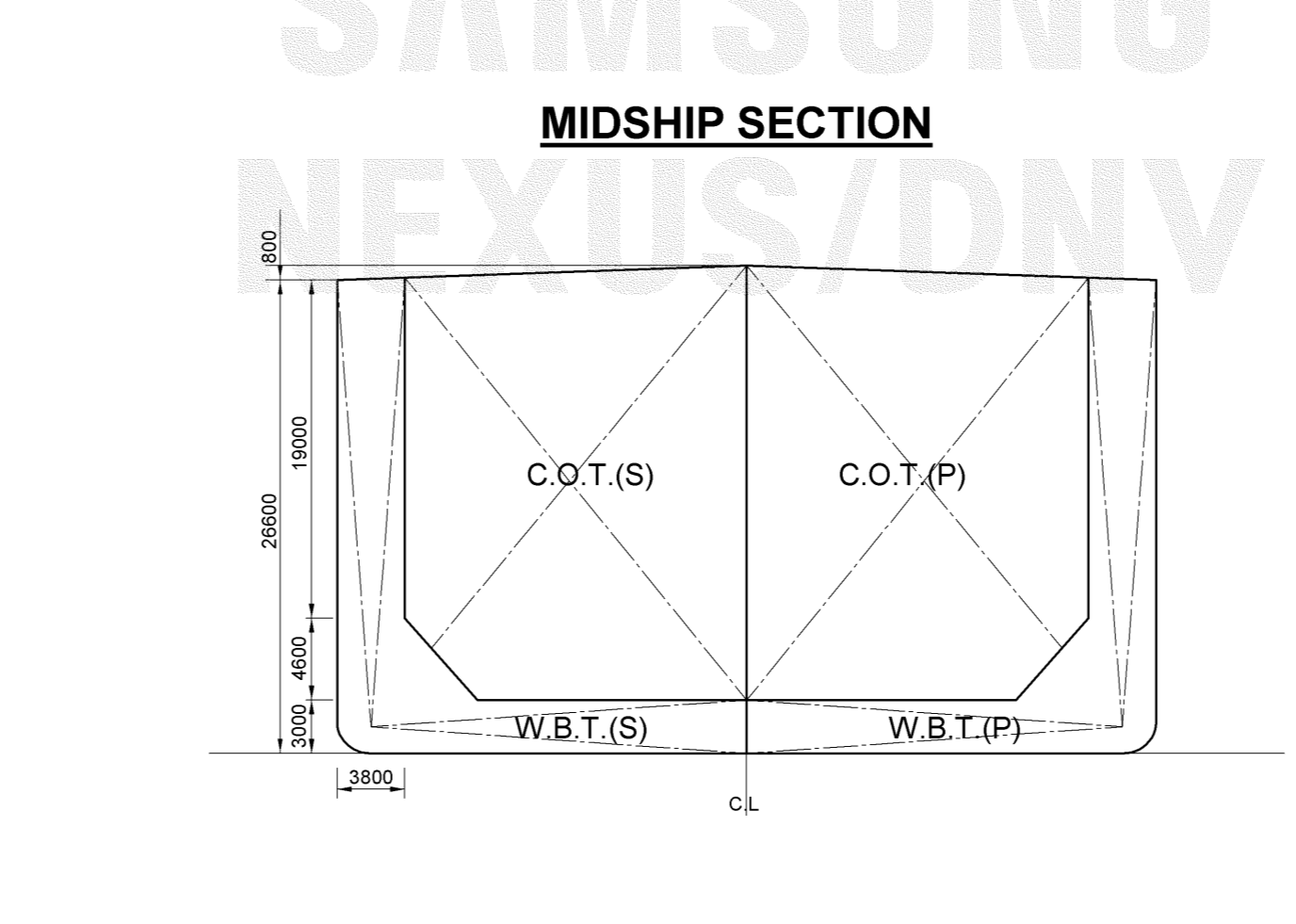
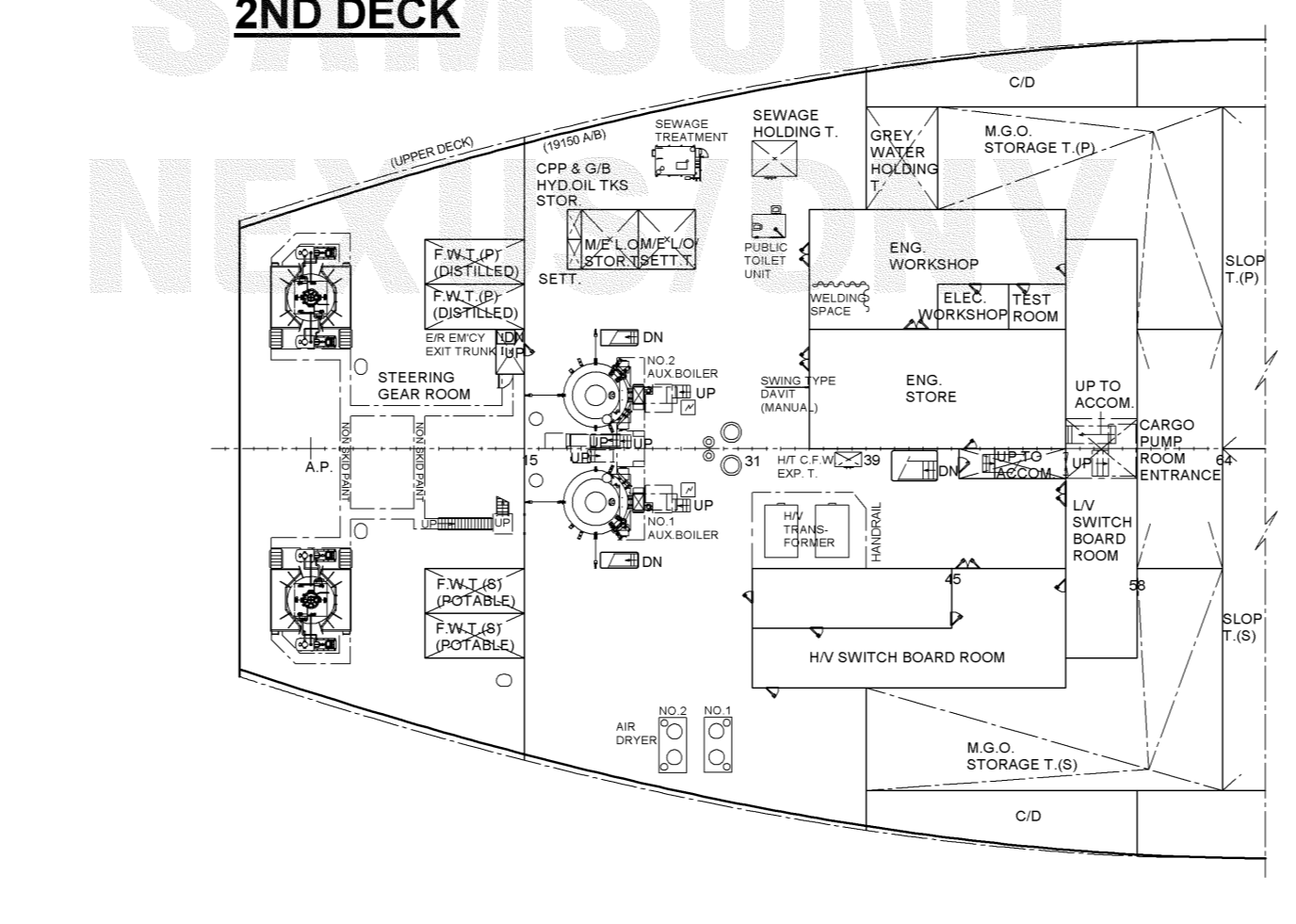
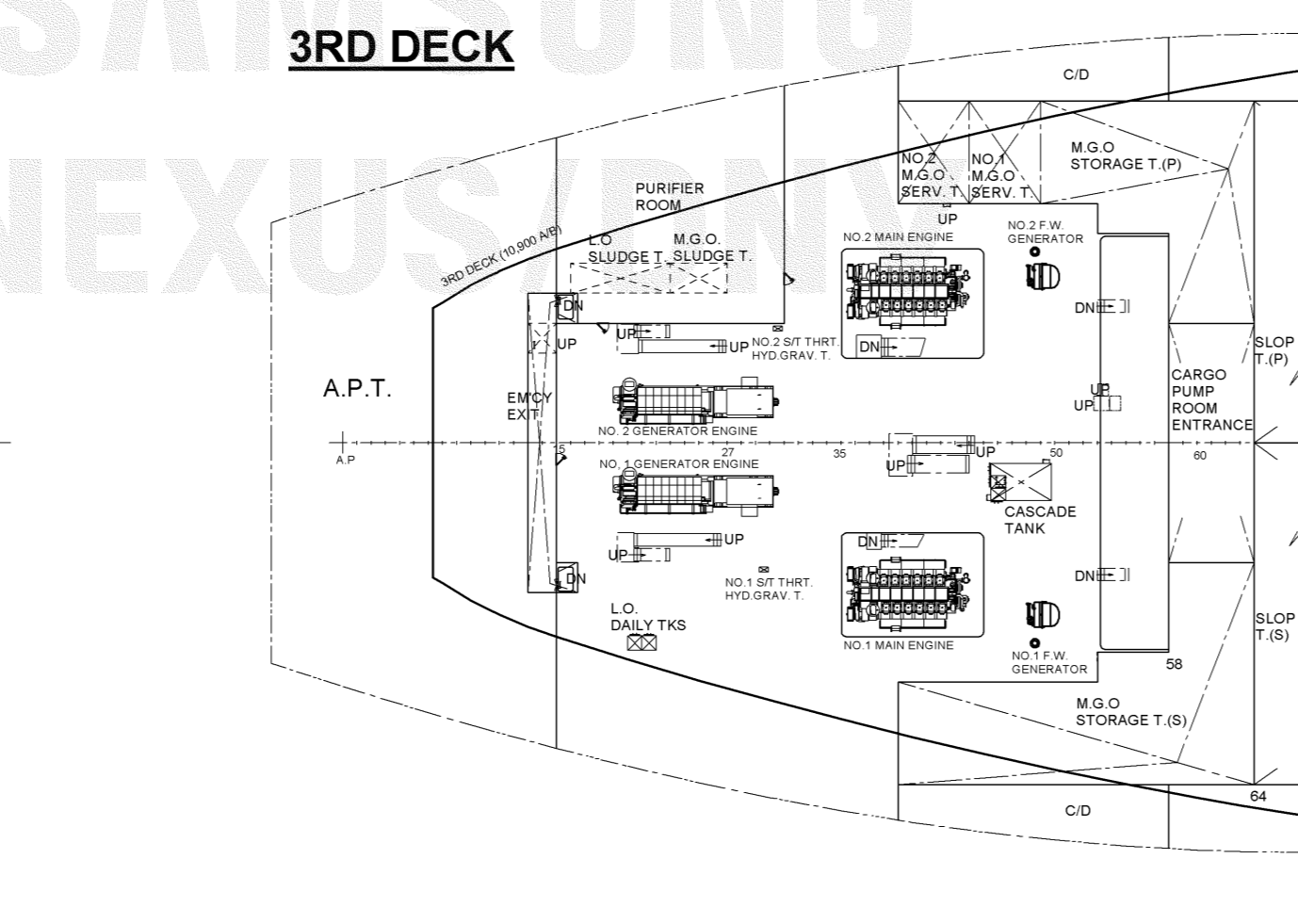
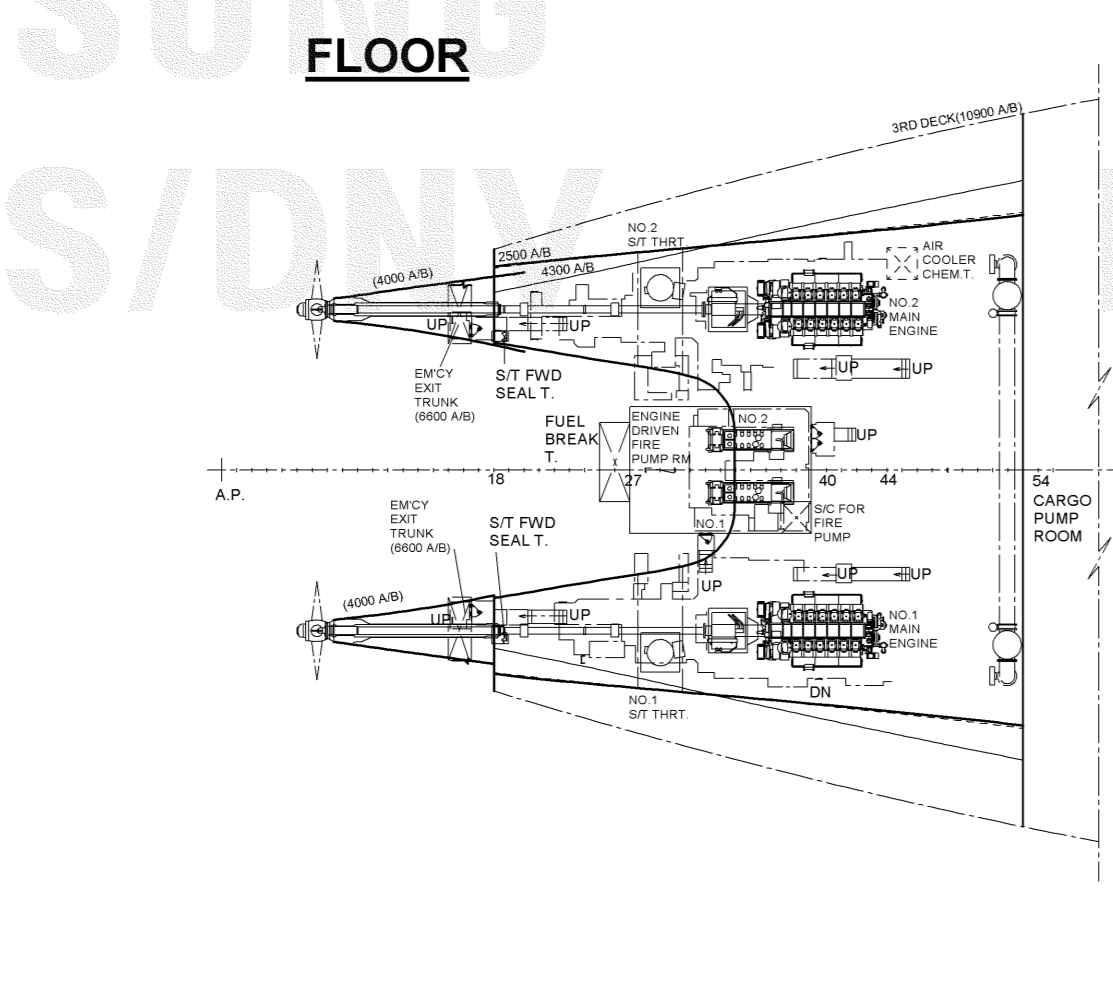
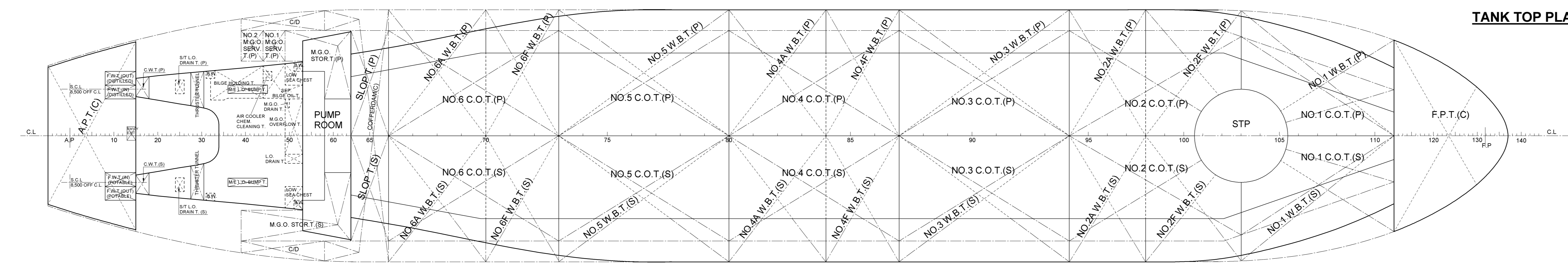
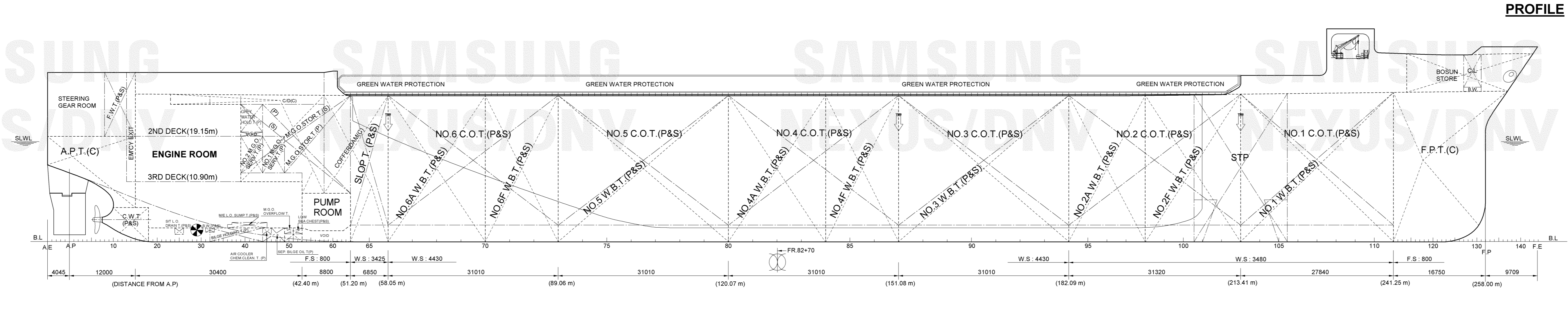
| COMPARTMENT      | LOCATION (FR. NO.) | CAPACITIES            |             | 100% FULL            |                      | MAX. WT OF INERTIA (mt) |
|------------------|--------------------|-----------------------|-------------|----------------------|----------------------|-------------------------|
|                  |                    | VOLUME 100% FULL (m³) | WEIGHT (mt) | L.C.G. FROM A.P. (m) | V.C.G. FROM B.L. (m) |                         |
| F.P.T. (C)       | 111 - 137          | 8629.7                | 8845.4      | 247.908              | 15.083               | 28307                   |
| NO.1 W.B.T. (P)  | 100 - 111          | 5857.1                | 6603.5      | 228.003              | 12.188               | 12044                   |
| NO.2 W.B.T. (S)  | 100 - 111          | 5857.1                | 6603.5      | 228.003              | 12.188               | 12044                   |
| NO.3 W.B.T. (P)  | 98 - 103           | 2078.1                | 2745.0      | 204.407              | 9.507                | 12501                   |
| NO.4 W.B.T. (S)  | 98 - 103           | 2078.1                | 2745.0      | 204.407              | 9.507                | 12501                   |
| NO.5 W.B.T. (P)  | 94 - 98            | 2289.3                | 2346.5      | 189.050              | 8.859                | 13942                   |
| NO.6 W.B.T. (S)  | 94 - 98            | 2289.3                | 2346.5      | 189.050              | 8.859                | 13942                   |
| NO.7 W.B.T. (P)  | 87 - 94            | 5100.1                | 5227.6      | 166.585              | 8.859                | 30970                   |
| NO.8 W.B.T. (S)  | 87 - 94            | 5100.1                | 5227.6      | 166.585              | 8.859                | 30970                   |
| NO.9 W.B.T. (P)  | 84 - 87            | 2185.8                | 2240.4      | 144.435              | 8.859                | 13273                   |
| NO.10 W.B.T. (S) | 84 - 87            | 2185.8                | 2240.4      | 144.435              | 8.859                | 13273                   |
| NO.11 W.B.T. (P) | 80 - 84            | 2914.4                | 2987.2      | 128.350              | 8.859                | 17697                   |
| NO.12 W.B.T. (S) | 80 - 84            | 2914.4                | 2987.2      | 128.350              | 8.859                | 17697                   |
| NO.13 W.B.T. (P) | 73 - 80            | 5052.0                | 5178.3      | 104.666              | 8.939                | 30285                   |
| NO.14 W.B.T. (S) | 73 - 80            | 5052.0                | 5178.3      | 104.666              | 8.939                | 30285                   |
| NO.15 W.B.T. (P) | 70 - 73            | 1986.4                | 2036.0      | 82.537               | 9.513                | 9876                    |
| NO.16 W.B.T. (S) | 70 - 73            | 1986.4                | 2036.0      | 82.537               | 9.513                | 9876                    |
| NO.17 W.B.T. (P) | 66 - 70            | 2332.8                | 2481.4      | 67.962               | 10.246               | 8283                    |
| NO.18 W.B.T. (S) | 66 - 70            | 2332.8                | 2481.4      | 67.962               | 10.246               | 8283                    |
| A.P.T. (C)       | - 5                | 3078.2                | 3102.1      | 8.144                | 15.275               | 33175                   |
| SUB TOTAL        |                    | 72516.9               |             |                      |                      |                         |

| COMPARTMENT             | LOCATION (FR. NO.) | CAPACITIES            |             | 100% FULL            |                      | MAX. WT OF INERTIA (mt) |
|-------------------------|--------------------|-----------------------|-------------|----------------------|----------------------|-------------------------|
|                         |                    | VOLUME 100% FULL (m³) | WEIGHT (mt) | L.C.G. FROM A.P. (m) | V.C.G. FROM B.L. (m) |                         |
| F.W.T. (DIST.) (P, OUT) | 8 - 15             | 165.4                 | 165.4       | 9.200                | 25.100               | 7                       |
| F.W.T. (PVT.) (S, OUT)  | 8 - 15             | 165.4                 | 165.4       | 9.200                | 25.100               | 7                       |
| F.W.T. (DIST.) (P, IN)  | 8 - 15             | 165.4                 | 165.4       | 9.200                | 25.100               | 7                       |
| F.W.T. (PVT.) (S, IN)   | 8 - 15             | 165.4                 | 165.4       | 9.200                | 25.100               | 7                       |
| SUB TOTAL               |                    | 656.2                 |             |                      |                      |                         |

| COMPARTMENT           | LOCATION (FR. NO.) | CAPACITIES            |             | 98% FULL             |                      | MAX. WT OF INERTIA (mt) |
|-----------------------|--------------------|-----------------------|-------------|----------------------|----------------------|-------------------------|
|                       |                    | VOLUME 100% FULL (m³) | WEIGHT (mt) | L.C.G. FROM A.P. (m) | V.C.G. FROM B.L. (m) |                         |
| MGO STOR. T. (P)      | 44 - 64            | 1834.2                | 1797.6      | 1817.8               | 45.803               | 18,261                  |
| MGO STOR. T. (S)      | 39 - 44            | 2238.5                | 2193.7      | 1974.4               | 45.803               | 18,182                  |
| NO.1 MGO SERV. T. (P) | 44 - 64            | 141.8                 | 139.0       | 125.1                | 37.226               | 15,847                  |
| NO.2 MGO SERV. T. (P) | 39 - 44            | 129.7                 | 127.1       | 114.4                | 33.235               | 16,036                  |
| SUB TOTAL             |                    | 4344.2                | 4257.4      |                      |                      |                         |

| COMPARTMENT          | LOCATION (FR. NO.) | CAPACITIES            |             | 98% FULL             |                      | MAX. WT OF INERTIA (mt) |
|----------------------|--------------------|-----------------------|-------------|----------------------|----------------------|-------------------------|
|                      |                    | VOLUME 100% FULL (m³) | WEIGHT (mt) | L.C.G. FROM A.P. (m) | V.C.G. FROM B.L. (m) |                         |
| M/E L.O. SUMP T. (P) | 36 - 45            | 10.2                  | 10.0        | 9.0                  | 32.544               | 2.976                   |
| M/E L.O. SUMP T. (S) | 36 - 45            | 10.2                  | 10.0        | 9.0                  | 32.544               | 2.976                   |
| M/E L.O. SUMP T. (P) | 23 - 27            | 34.7                  | 34.0        | 30.6                 | 29.000               | 21.774                  |
| M/E L.O. SUMP T. (S) | 23 - 27            | 34.7                  | 34.0        | 30.6                 | 29.000               | 21.774                  |
| M/O OIL SETT. T. (P) | 18 - 19            | 4.6                   | 4.0         | 4.0                  | 14.800               | 21.690                  |
| M/O OIL SETT. T. (S) | 18 - 19            | 4.6                   | 4.0         | 4.0                  | 14.800               | 21.690                  |
| SUB TOTAL            |                    | 98.5                  | 96.5        |                      |                      |                         |

| COMPARTMENT            | LOCATION (FR. NO.) | CAPACITIES            |             | 100% FULL            |                      | MAX. WT OF INERTIA (mt) |
|------------------------|--------------------|-----------------------|-------------|----------------------|----------------------|-------------------------|
|                        |                    | VOLUME 100% FULL (m³) | WEIGHT (mt) | L.C.G. FROM A.P. (m) | V.C.G. FROM B.L. (m) |                         |
| GREYWATER HOLD. T. (P) | 39 - 44            | 114.0                 | 33.200      | 22.488               |                      | 63                      |
| SEP. BILGE OIL T. (P)  | 44 - 53            | 69.8                  | 38.283      | 1.289                |                      | 97                      |
| BILGE HOLDING T. (P)   | 23 - 27            | 112.6                 | 30.538      | 1.343                |                      | 128                     |
| S/T L.O. DRAIN T. (P)  | 24 - 26            | 4.8                   | 20.900      | 1.980                |                      | 2                       |
| S/T L.O. DRAIN T. (S)  | 24 - 26            | 4.8                   | 20.900      | 1.980                |                      | 2                       |
| L.O. DRAIN T. (P)      | 49 - 53            | 49.5                  | 40.852      | 1.950                |                      | 244                     |
| M/O DRAIN T. (P)       | 49 - 53            | 49.5                  | 40.852      | 1.950                |                      | 244                     |
| S/T C.W.T. (P)         | 7 - 18             | 88.5                  | 11.671      | 3.488                |                      | 16                      |
| S/T C.W.T. (S)         | 7 - 18             | 88.5                  | 11.671      | 3.488                |                      | 16                      |
| L.O. SUDGE T. (P)      | 16 - 23            | 8.4                   | 15.600      | 10.438               |                      | 2                       |
| M/O SUDGE T. (P)       | 23 - 27            | 8.8                   | 28.000      | 18.638               |                      | 1                       |
| AIR COOL. CHEM. (L)    | 44 - 46            | 2.2                   | 38.000      | 1.900                |                      | 0                       |
| FUEL BREAK. T. (C)     | 25 - 27            |                       | 29.300      | 6.300                |                      | 10                      |
| SUB TOTAL              |                    | 552.4                 |             |                      |                      |                         |



| HN 1716 LIGHTSHIP CONDITION DATA |                     |
|----------------------------------|---------------------|
| - LWT :                          | 37101.0 MT          |
| - LCG :                          | 120.970 m FROM A.P. |
| - VCG :                          | 20.243 m ABOVE B.L. |

| FREEBOARD, DRAFT & DEADWEIGHT TABLE |               |                     |                 |                   |
|-------------------------------------|---------------|---------------------|-----------------|-------------------|
|                                     | FREEBOARD (m) | DRAFT (EXTREME) (m) | DEADWEIGHT (MT) | DISPLACEMENT (MT) |
| TROPICAL FRESH WATER                | TF 7.637      | 19.012              | 152395.5        | 189496.5          |
| FRESH WATER                         | F 8.016       | 18.633              | 148213.8        | 185314.8          |
| TROPICAL                            | T 8.049       | 18.600              | 152473.7        | 189574.7          |
| SUMMER                              | S 8.428       | 18.221              | 148192.2        | 185293.2          |
| WINTER                              | W 8.807       | 17.842              | 143915.7        | 181016.7          |

| LENGTH O. A.                | 271.754 m |
|-----------------------------|-----------|
| LENGTH B. P.                | 258.0 m   |
| BREADTH (MOULDED)           | 46.0 m    |
| DEPTH (MOULDED)             | 26.6 m    |
| DESIGNED DRAUGHT (MOULDED)  | 18.2 m    |
| SCANTLING DRAUGHT (MOULDED) | 18.2 m    |

Registration : NIS

This document is the property of **SAMSUNG HEAVY IND.CO.LTD** and must in no case wholly or partially be copied, shown or given to third party without SAMSUNG's consent.

|                                  |  |                         |
|----------------------------------|--|-------------------------|
| Department: 220                  | Ship Type: 950.000 bbls FPSO                 | Class: DNV              |
| Hull No.: 1716                   | Ship Name: NEXUS 1                           | Hull No.: 1716          |
| Approved by: W. H. Cho           | Document Title: CAPACITY PLAN WITH DWT SCALE | IMO No.: 9399832        |
| Checked by: Y. B. Bang           | Builder's Document No.: NEX1-SH1-JA-0005     | Rev. No.: A             |
| Prepared by: K. Y. Shin (T.6430) | Scale: 1/400                                 | Unit: mm                |
| SAMSUNG HEAVY IND.CO.LTD.        | Unit: mm                                     | Consolidated No.: GY-05 |
| GEORJE SHIPYARD, KOREA           | Unit: mm                                     | Consolidated No.: GY-05 |

SIZE : 590 X 1400