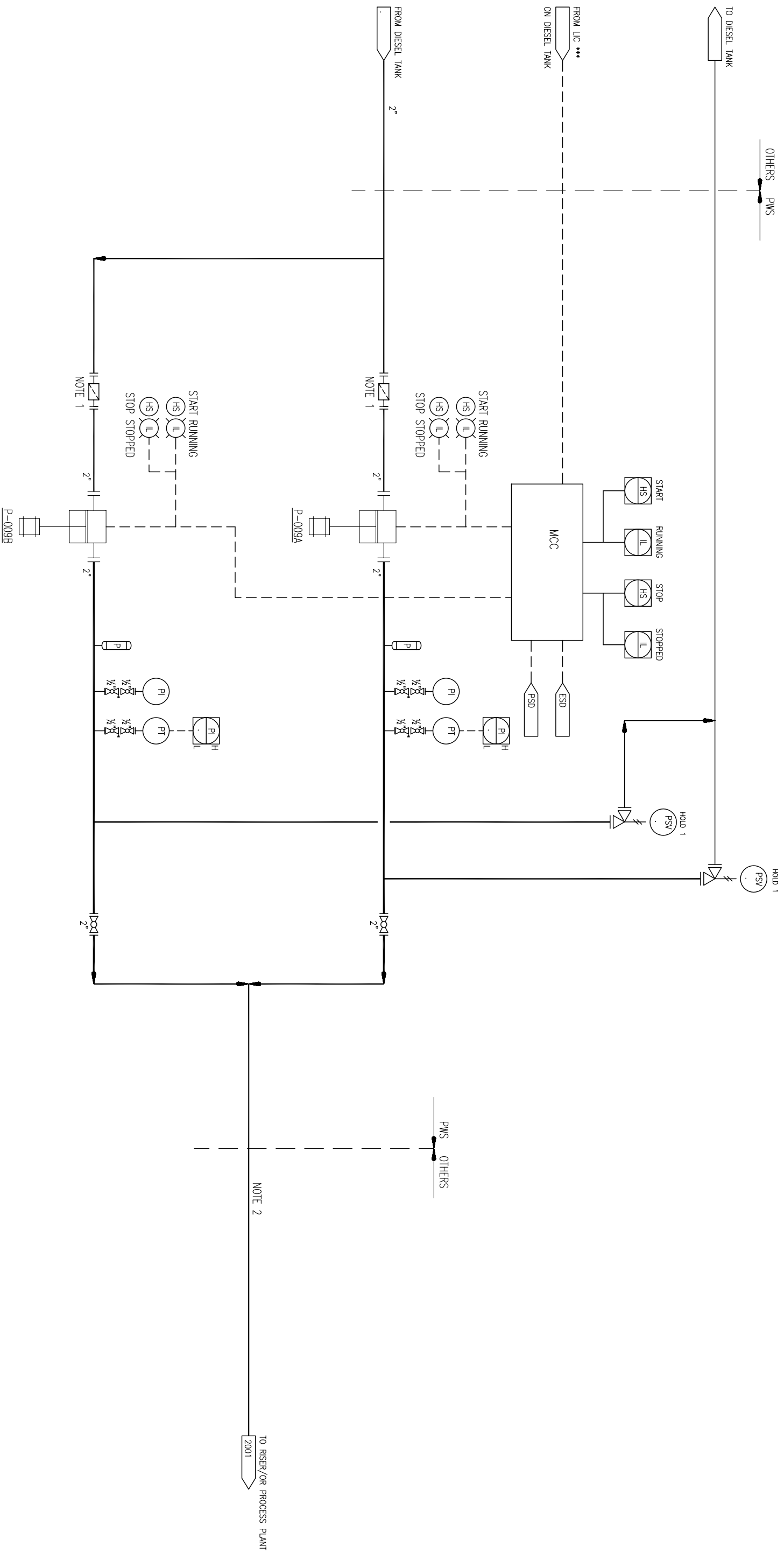


ITEM No:
 UNIT:
 SIZE/DUTY:
 DES. PRESS./TEMP:
 OPER. PRESS./TEMP:
 INSULATION:
 TRIM:

P-009 A/B
 DIESEL INJECTION PUMPS
 22 kW / 120 m³/day
 17.2 barg / 93°C
 140 barg DISCHARGE PRESSURE / 40°C
 CARBON STEEL



HOLDS
 1. PSV SIZE TBC

NOTES:
 1. TEMP WITCHES HAT TYPE STRAINER FOR COMMISSIONING ONLY
 2. PIPING FROM DIESEL PUMP TO RISER/PROCESS PLANT BY OTHERS

© Design Rights POWERWELL SERVICES.
 This document and the information it contains is confidential and the property of POWERWELL SERVICES and is not to be reproduced, communicated to a third party or used in any manner whatsoever without the prior written consent of POWERWELL SERVICES.

PRODUCTS AND TECHNOLOGY DEVELOPED IN U.S.A., OR BY CITIZENS OF THE U.S.A. ARE DEEMED TO BE OF U.S. ORIGIN AND THEREBY SUBJECT TO U.S. EXPORT CONTROL LAWS. THE EXPORT OR RE-EXPORT OF U.S. ORIGIN TECHNOLOGY BY ANY MEANS, INCLUDING DATA TRANSFER, IS PROHIBITED EXCEPT IN ACCORDANCE WITH U.S. LAW AND POWERWELL SERVICES POLICY.

NO.	INITIAL ISSUE	REVISION	DATE	BY	CHK. BY	DATE	PROJECT NO.	PROJECT	SCALE	DWG. NO.	REV. NO.
1			23 Aug 06	KW	BT	23 Aug 06	06-PE0003A	PETROLJARL SIRI	NONE	06-PE0003A-5-2021	1



PIPING AND INSTRUMENTATION DIAGRAM
 DIESEL INJECTION PUMPS
 OIL PROCESSING FACILITY