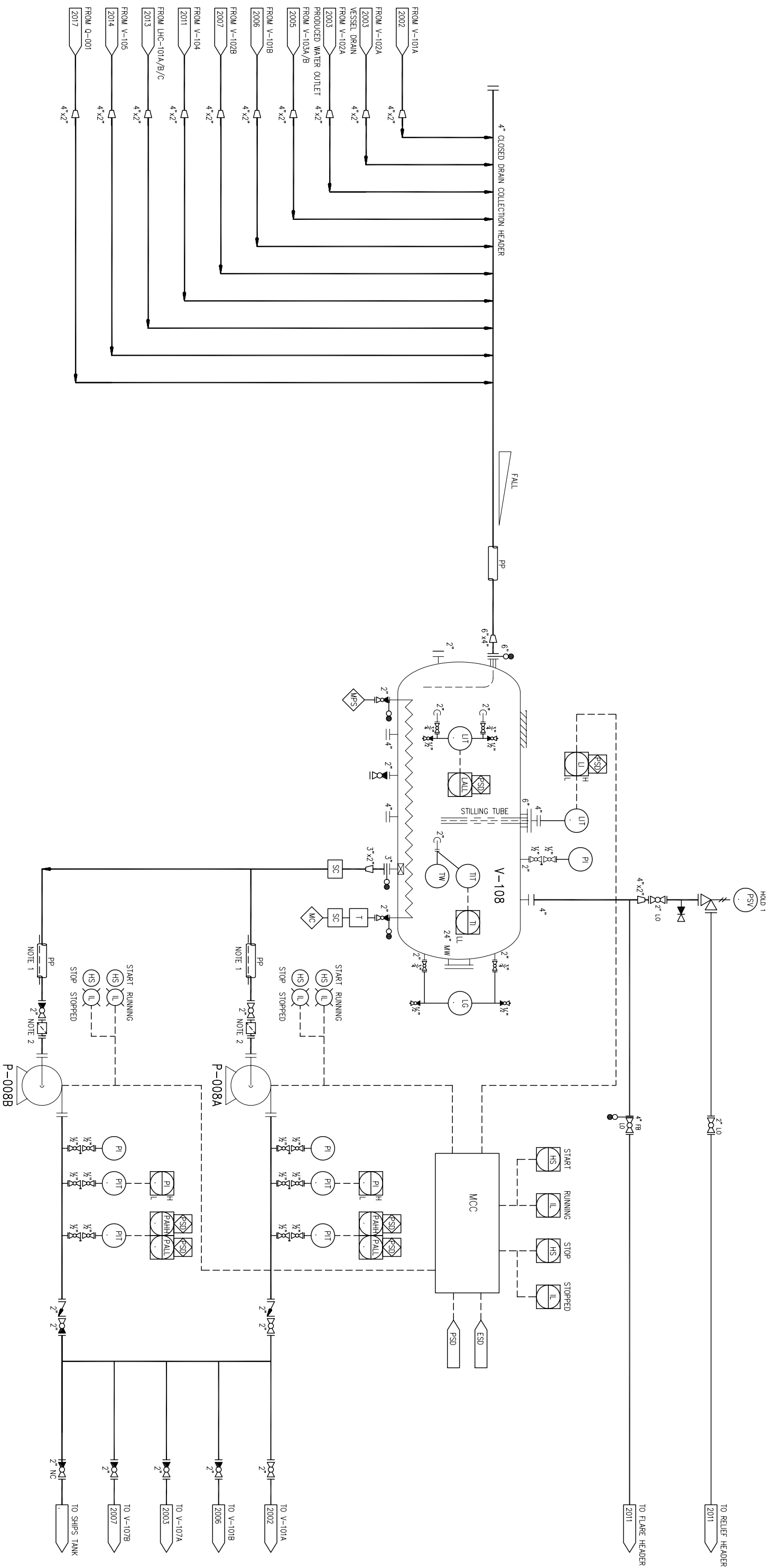


ITEM No:  
UNIT:  
SIZE/DUTY:  
DES. PRESS./TEMP:  
OPER. PRESS.  
INSULATION  
TRIM:

V-108  
CLOSED DRAIN VESSEL  
2000mm OD x 4000mm T/1  
15 barg / 170°C  
0.5 barg / 135°C  
YES  
CARBON STEEL - INTERNALLY COATED

P-008A/B  
CLOSED DRAIN PUMPS  
7.5 kW / 12m<sup>3</sup>/hr  
15 barg / 170°C  
DISCHARGE PRESSURE 12 barg  
CARBON STEEL/316 ST/STL INTERNALS



HOLDS  
1. PSV SIZE TBC

NOTES:  
1. TYPE OF HEAT TRACING TBC  
2. TEMP SWITCHES HAT TYPE STRAINER FOR COMMISSIONING ONLY

© Design Rights POWERWELL SERVICES.  
This document and the information it contains is confidential and the property of POWERWELL SERVICES and is not to be reproduced, communicated to a third party or used in any manner whatsoever without the prior written consent of POWERWELL SERVICES.

PRODUCTS AND TECHNOLOGY DEVELOPED IN U.S.A., OR BY CITIZENS OF THE U.S.A. ARE DEMED TO BE OF U.S. ORIGIN AND THEREBY SUBJECT TO U.S. EXPORT CONTROL LAWS. THE EXPORT OR RE-EXPORT OF U.S. ORIGIN TECHNOLOGY BY ANY MEANS, INCLUDING DATA TRANSFER, IS PROHIBITED EXCEPT IN ACCORDANCE WITH U.S. LAW AND POWERWELL SERVICES POLICY.

NO.	INITIAL ISSUE	REVISION	DATE	BY	CHK.	ENGR. APPR.	DATE	PROJECT NO.	SCALE	REF. NO.
1			15 AUG 06	BT	BT	BT	15 AUG 06	06-PE0003A	NONE	1

PowerWell TESTING™

PIPING AND INSTRUMENTATION DIAGRAM  
CLOSED DRAIN SYSTEM  
OIL PROCESSING FACILITY