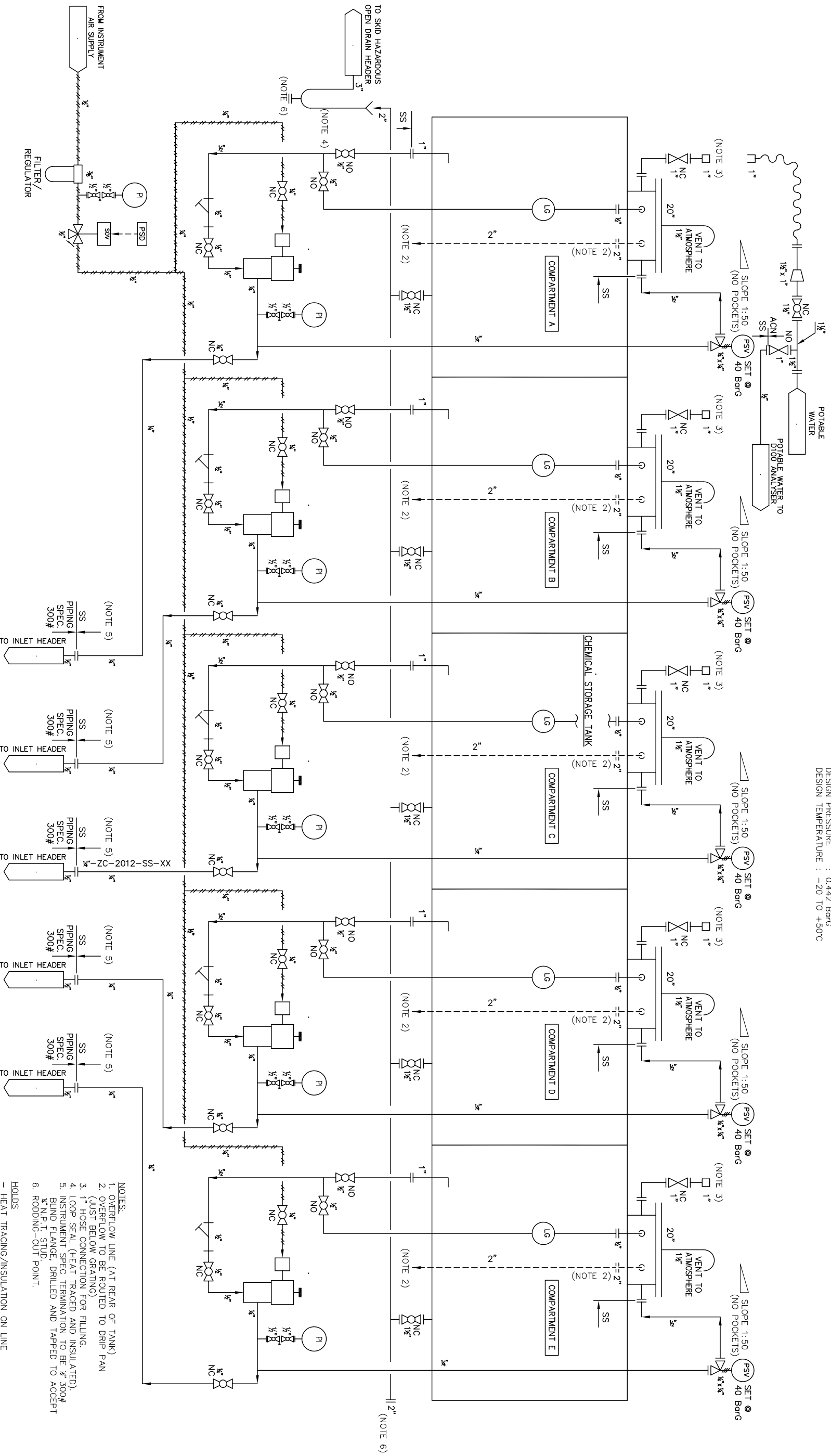


CHEMICAL DOSING PUMPS

100% DUTY EACH  
 TYPE : PNEUMATIC, POSITIVE DISPLACEMENT  
 CAPACITY : 6.0 LITRES/HR. (MINIMUM) @ 20 BarG dP.  
 AIR CONSUMPTION : 2.15 SCMD.  
 OPERATING DISCHARGE PRESSURE : 20 BarG (MAX.)  
 OPERATING TEMPERATURE : AMBIENT  
 DESIGN PRESSURE : 207 BarG  
 DESIGN TEMPERATURE : -20 TO 121°C

CHEMICAL STORAGE TANK

1 x 100%  
 SIZE : 1m x 1 m x 4.5 m  
 No. of COMPARTMENTS : 5  
 CAPACITIES :  
 : COMPARTMENT A = 1.0m<sup>3</sup>  
 : COMPARTMENT B = 1.0m<sup>3</sup>  
 : COMPARTMENT C = 1.0m<sup>3</sup>  
 : COMPARTMENT D = 0.5m<sup>3</sup>  
 : COMPARTMENT E = 1.0m<sup>3</sup>  
 OPERATING PRESSURE : AMBIENT  
 OPERATING TEMP. : AMBIENT  
 DESIGN PRESSURE : 0.442 BarG  
 DESIGN TEMPERATURE : -20 TO +50°C



- NOTES:
1. OVERFLOW LINE (AT REAR OF TANK)
  2. OVERFLOW TO BE ROUTED TO DRIP PAN
  3. 1" HOSE CONNECTION FOR FILLING.
  4. LOOP SEAL (HEAT TRACED AND INSULATED).
  5. INSTRUMENT SPEC TERMINATION TO BE 3/4" 300# BLIND FLANGE, DRILLED AND TAPPED TO ACCEPT W.N.P.T. STUD.
  6. RODDING-OUT POINT.
- HOLDS  
 - HEAT TRACING/INSULATION ON LINE

PRODUCTS AND TECHNOLOGY DEVELOPED IN U.S.A., OR BY CITIZENS OF THE U.S.A. ARE DEMED TO BE OF U.S. ORIGIN AND THEREBY SUBJECT TO U.S. EXPORT CONTROL LAWS. THE EXPORT OR RE-EXPORT OF U.S. ORIGIN TECHNOLOGY BY ANY MEANS, INCLUDING DATA TRANSFER, IS PROHIBITED EXCEPT IN ACCORDANCE WITH U.S. LAW AND POWERWELL SERVICES POLICY.

© Design Rights POWERWELL SERVICES.  
 This document and the information it contains is confidential and the property of POWERWELL SERVICES and is not to be reproduced, communicated to a third party or used in any manner whatsoever without the prior written consent of POWERWELL SERVICES.

NO.	REVISION	DATE	BY	CHK.	APPV.	DATE	BY	CHK.	APPV.	DATE	BY	CHK.	APPV.	DATE	BY	CHK.	APPV.
1	INITIAL ISSUE																
2	DOUBLE CHECK ADDED TO P1																

NO.	REVISION	DATE	BY	CHK.	APPV.	DATE	BY	CHK.	APPV.	DATE	BY	CHK.	APPV.
1	INITIAL ISSUE												
2	DOUBLE CHECK ADDED TO P1												

NO.	REVISION	DATE	BY	CHK.	APPV.	DATE	BY	CHK.	APPV.	DATE	BY	CHK.	APPV.
1	INITIAL ISSUE												
2	DOUBLE CHECK ADDED TO P1												

POWERWELL TESTING™

PIPING AND INSTRUMENTATION DIAGRAM  
 CHEMICAL DOSING SYSTEM  
 OIL PROCESSING FACILITY

06-P-E0003A-5-2016