

AIR RESERVOIR  
 DESIGN - ASME VIII DIV. 1 2004  
 CAPACITY - 11 LITRES NOMINAL  
 WORKING PRESSURE - 8.0 BARG  
 DESIGN PRESSURE - 10.0 BARG  
 TEST PRESSURE - 13.0 BARG

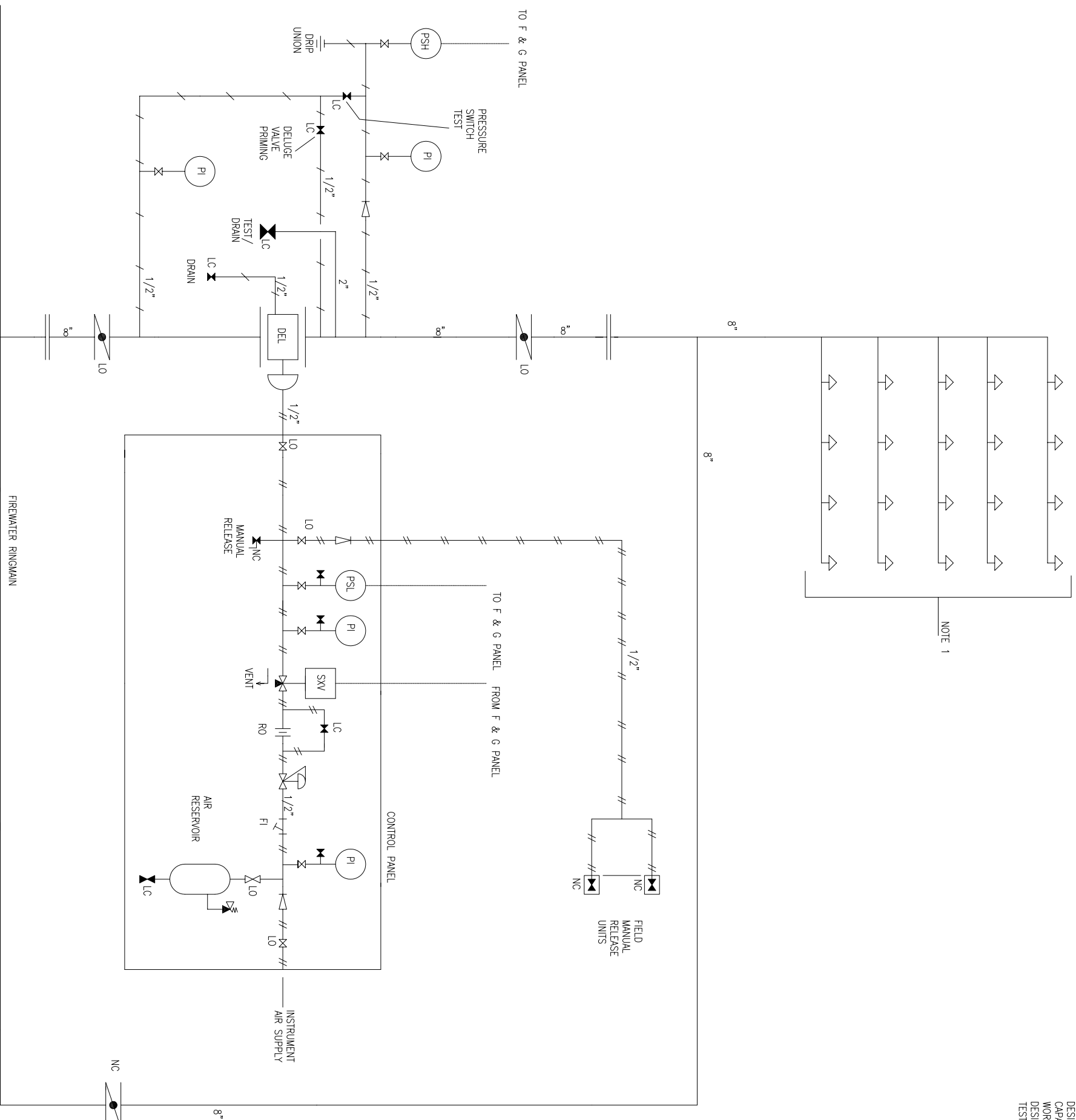
| DESCRIPTION              | TAG No. | SET POINT        |
|--------------------------|---------|------------------|
| WATER ON PRESSURE SWITCH |         | 2.0 BARG RISING  |
| LOW AIR PRESSURE SWITCH  |         | 3.5 BARG FALLING |
| PRESSURE CONTROL VALVE   |         | 4.5 BARG OUTLET  |
| RESTRICTION ORIFICE      |         | 1.0mm ADJUSTABLE |
| PRESSURE RELIEF VALVE    |         | 10 BARG          |

EQUIPMENT DESIGNATIONS :-

- BA - BALL VALVE
- BB - BLOCK/BLEED VALVE
- BF - BUTTERFLY VALVE
- CH - CHECK VALVE
- DEL - DELUGE VALVE
- GA - GATE VALVE
- PI - PRESSURE GAUGE
- PSL - PRESSURE SWITCH (LOW)
- PSH - PRESSURE SWITCH (HIGH)
- SXV - SOLENOID VALVE
- PCV - PRESSURE CONTROL VALVE
- RO - RESTRICTION ORIFICE (NEEDLE VALVE)
- FI - FILTER
- PSV - PRESSURE RELIEF VALVE

TERMINATIONS :-

- KEY :-
- WATER PIPING - CARBON STEEL
  - WATER TUBING - MONEL
  - AIR TUBING - STAINLESS STEEL
  - ▷ DELUGE NOZZLE
  - LO LOCKED OPEN
  - LC LOCKED CLOSED
  - NC NORMALLY CLOSED



NOTE 1

PRODUCTS AND TECHNOLOGY DEVELOPED IN U.S.A., OR BY CITIZENS OF THE U.S.A. ARE DEEMED TO BE OF U.S. ORIGIN AND THEREBY SUBJECT TO U.S. EXPORT CONTROL LAWS. THE EXPORT OR RE-EXPORT OF U.S. ORIGIN TECHNOLOGY BY ANY MEANS, INCLUDING DATA TRANSFER, IS PROHIBITED EXCEPT IN ACCORDANCE WITH U.S. LAW AND POWERWELL SERVICES POLICY.



| NO. | INITIAL ISSUE | REVISION | DATE      | BY      | CHK. BY  | DATE       | PROJECT NO. | PROJECT        | SCALE | DWG. NO.          | REV. NO. |
|-----|---------------|----------|-----------|---------|----------|------------|-------------|----------------|-------|-------------------|----------|
| 1   | INITIAL ISSUE |          | 25 Jul 06 | K. Word | A. Davis | 4 Aug 2006 | 06-PE0003A  | RETROJARL SIRI | NONE  | 06-PE0003A-5-2015 | 1        |

NOTES:  
 1 DELUGE POSTS ON PROCESS DECK

© Design Rights POWERWELL SERVICES.  
 This document and the information it contains is confidential and the property of POWERWELL SERVICES and is not to be reproduced, communicated to a third party or used in any manner whatsoever without the prior written consent of POWERWELL SERVICES.

PIPING AND INSTRUMENTATION DIAGRAM  
 DELUGE VALVE ASSEMBLY  
 OIL PROCESSING FACILITY