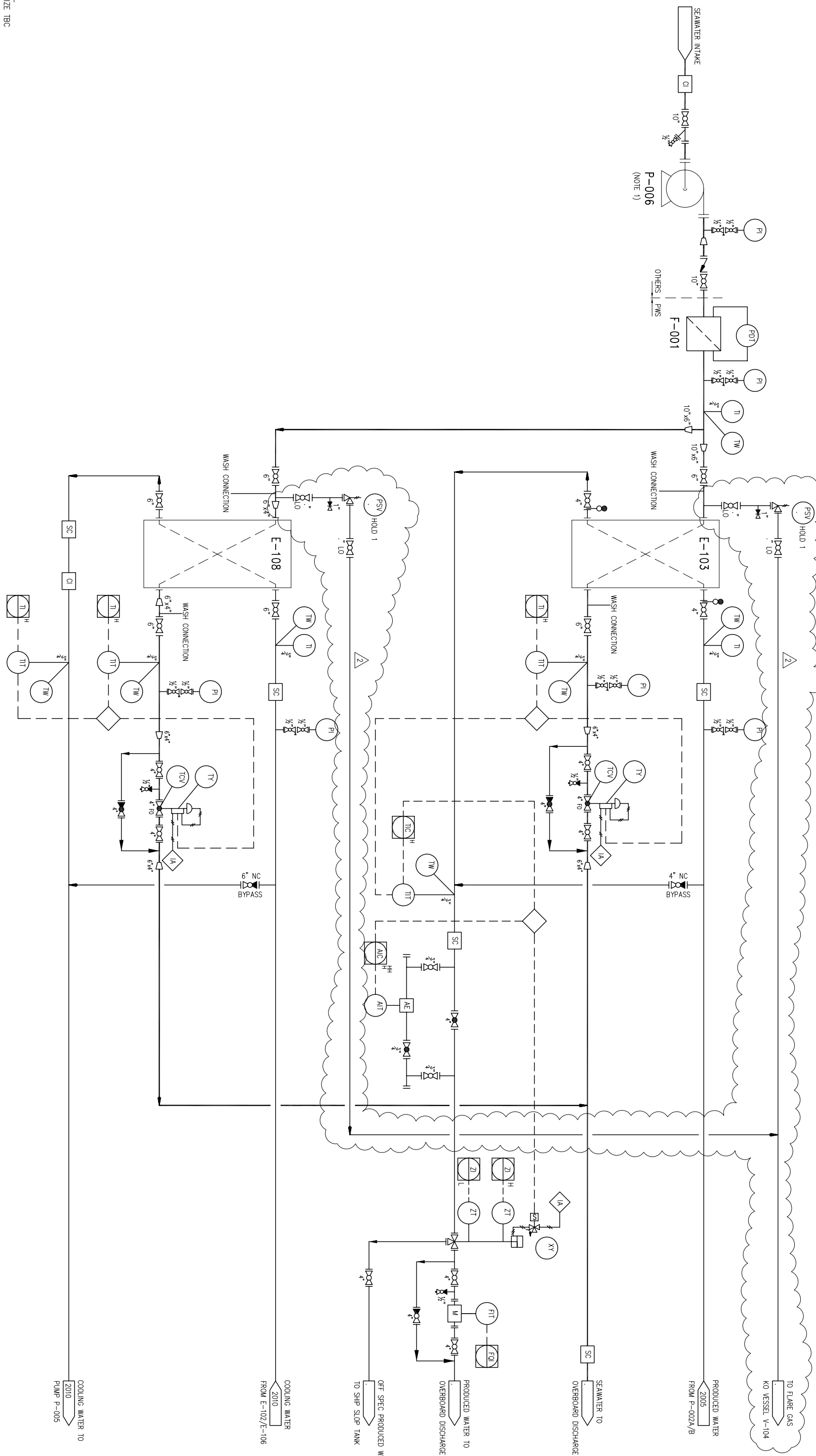


ITEM No: P-006
 UNIT: SEAWATER PUMP
 SIZE/DUITY: 650 m³/hr
 DES. PRESS./TEMP: 10 barg / 70°C
 OPER. PRESS: DISCHARGE PRESSURE 5 barg
 RM: CARBON STEEL

F-001 SEAWATER FILTER
 FRESH WATER COOLER
 610mm OD x 950 T/T / 3400 kW
 10 barg / 95°C
 CS SHELL TITANIUM PLATE

F-103 PRODUCED WATER COOLER
 840mm OD x 398 T/T / 3907 kW
 10 barg / 120°C
 4 barg / 88°C
 CS SHELL TITANIUM PLATE



HOLDS:
 1. PSV SIZE TBC

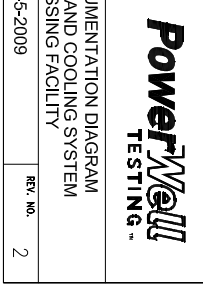
NOTES:
 1. SEAWATER PUMP AND ELECTROCHLORINATION PACKAGE BY OTHERS

PRODUCTS AND TECHNOLOGY DEVELOPED IN U.S.A., OR BY CITIZENS OF THE U.S.A. ARE DEMED TO BE OF U.S. ORIGIN AND THEREBY SUBJECT TO U.S. EXPORT CONTROL LAWS. THE EXPORT OR RE-EXPORT OF U.S. ORIGIN TECHNOLOGY BY ANY MEANS, INCLUDING DATA TRANSFER, IS PROHIBITED EXCEPT IN ACCORDANCE WITH U.S. LAW AND POWERWELL SERVICES POLICY.

© Design Rights POWERWELL SERVICES.
 This document and the information it contains is confidential and the property of POWERWELL SERVICES and is not to be reproduced, communicated to a third party or used in any manner whatsoever without the prior written consent of POWERWELL SERVICES.

NO.	REVISION	DATE	BY	CHK.	APPV.	DATE	PROJECT	SCALE	REF. NO.
1	INITIAL ISSUE								
2	REQUIRED AS INDICATED								

NO.	REVISION	DATE	BY	CHK.	APPV.	DATE	PROJECT	SCALE	REF. NO.
1	INITIAL ISSUE								
2	REQUIRED AS INDICATED								



PIPING AND INSTRUMENTATION DIAGRAM
 SEAWATER PUMPS AND COOLING SYSTEM
 OIL PROCESSING FACILITY
 06-PE0003A-5-2009