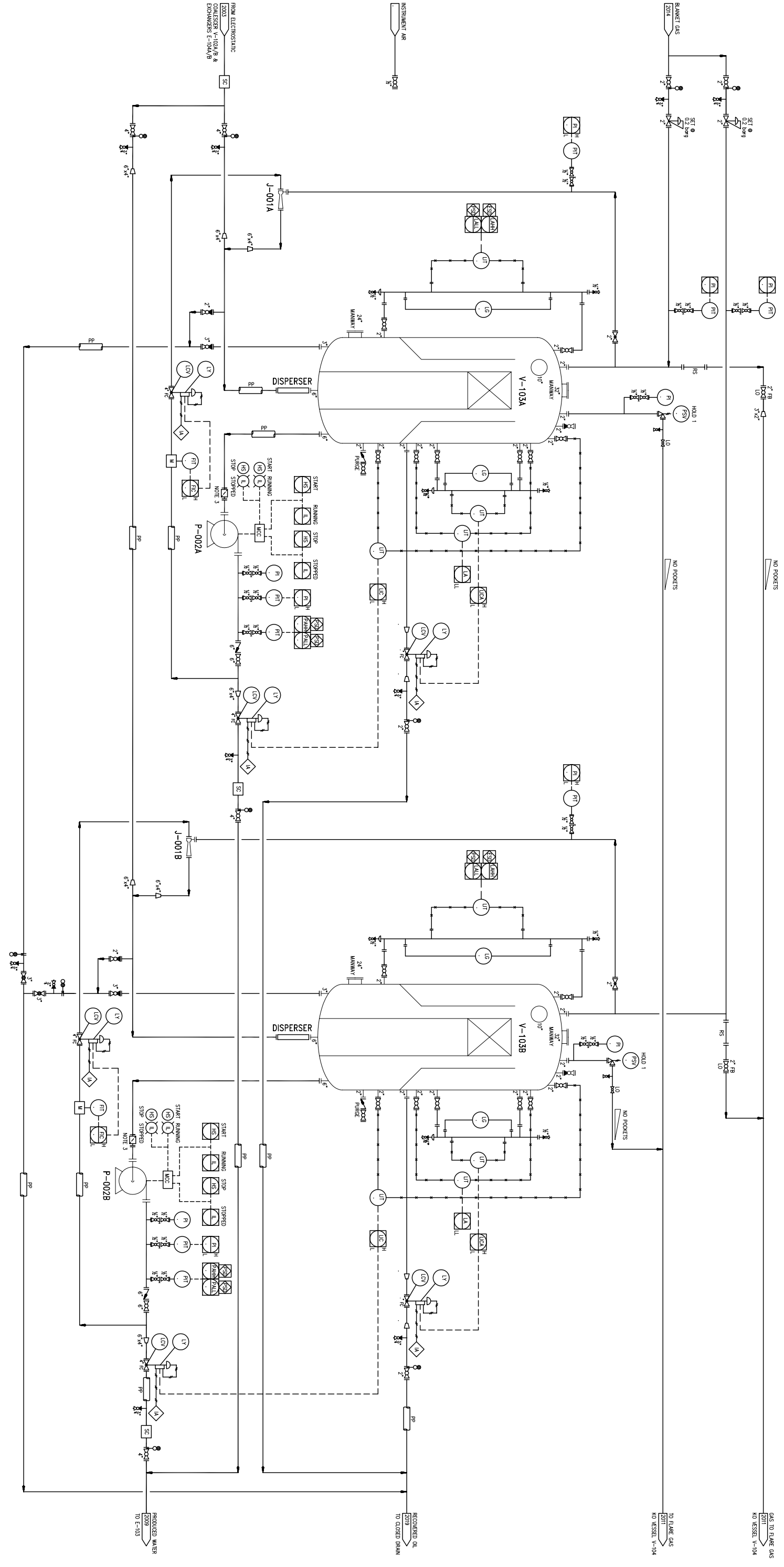


ITEM No: J-001A/B  
 UNIT: EDUCATOR  
 SIZE/DUTY: 15 barg / 130°C  
 DES. PRESS./TEMP: 3.6 barg / 95°C  
 OPER. PRESS./TEMP: NO  
 INSULATION: NO  
 TRIM: CARBON STEEL

V-103A/B  
 GAS FLOTATION  
 2134mm OD x 2130mm TAN/TAN  
 15 barg / 130°C  
 0.5 barg / 95°C  
 NO  
 CARBON STEEL - GLASS FLAKE LINED

P-002A/B  
 PRODUCED WATER PUMPS  
 7.5 kW/136 m³/hr  
 15 barg / 130°C  
 DISCHARGE PRESSURE 3.6 barg / 95°C  
 NO  
 STAINLESS STEEL



HOLDS:  
 1. PSV SIZE TBC

PRODUCTS AND TECHNOLOGY DEVELOPED IN U.S.A., OR BY CITIZENS OF THE U.S.A. ARE DEEMED TO BE OF U.S. ORIGIN AND THEREBY SUBJECT TO U.S. EXPORT CONTROL LAWS. THE EXPORT OR RE-EXPORT OF U.S. ORIGIN TECHNOLOGY BY ANY MEANS, INCLUDING DATA TRANSFER, IS PROHIBITED EXCEPT IN ACCORDANCE WITH U.S. LAW AND POWERWELL SERVICES POLICY.

NOTES:  
 1. DELETED  
 2. GAS FLOTATION UNIT DETAILS TO BE SHOWN AFTER VENDOR SELECTION  
 3. TEMP. SWITCHES HAT TYPE STRAINER FOR COMMISSIONING ONLY

NO.	REVISION	DATE	BY	CHK.	DATE	BY	CHK.	PROJECT NO.	SCALE	REV. NO.
1	INITIAL ISSUE	25 Jul 06	KM	AJD	25 Jul 06	KS	AJD	06-PE0003A	NONE	2
2	REVISED AND REBEGAN		KM	BT		IS				

PowerWell TESTING  
 PIPING AND INSTRUMENTATION DIAGRAM  
 GAS FLOTATION TRAIN  
 OIL PROCESSING FACILITY  
 06-PE0003A-5-2005