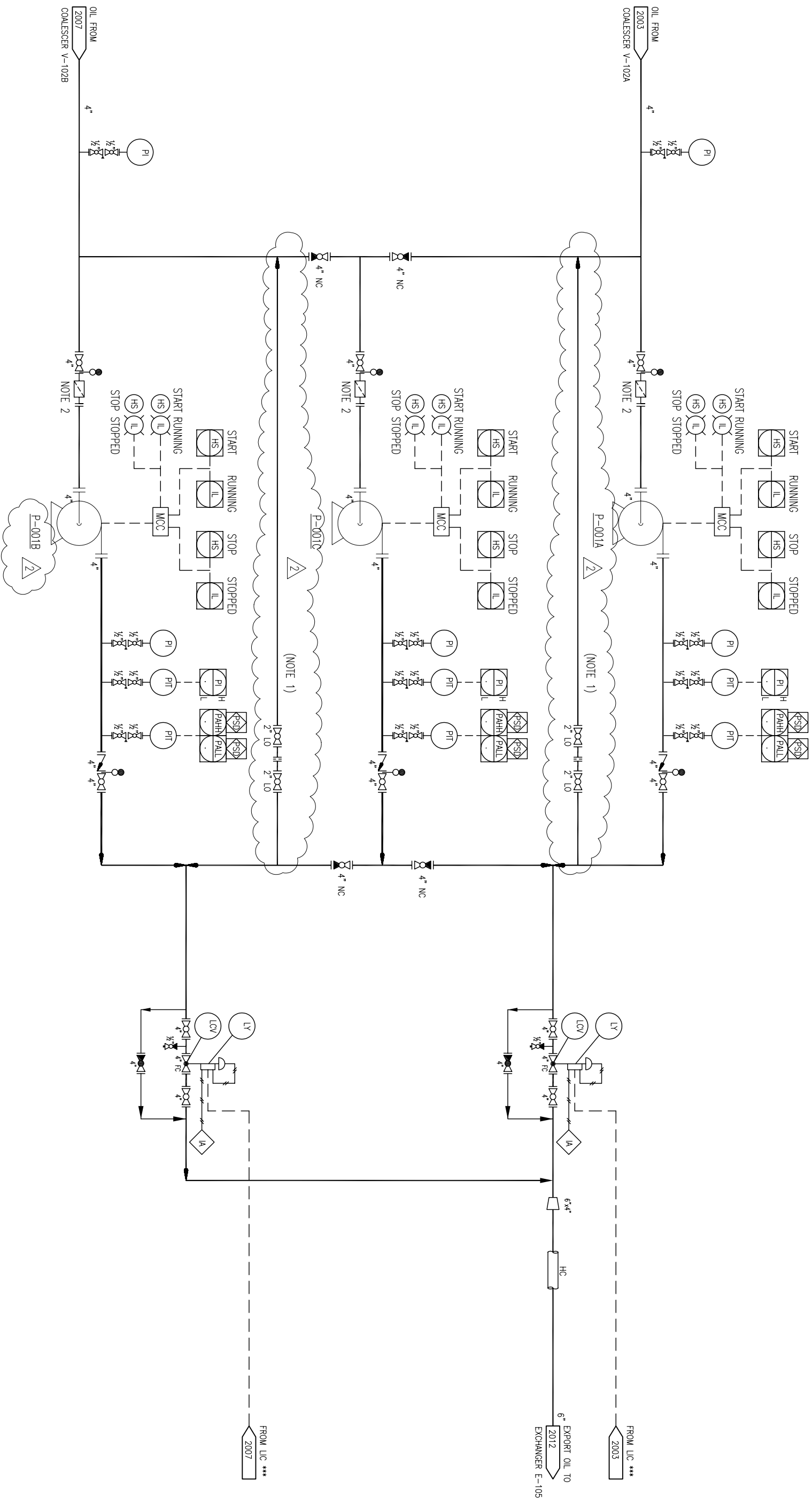


ITEM No:
 UNIT:
 SIZE/DUTY:
 DES. PRESS./TEMP:
 OPER. PRESS./TEMP:
 INSULATION:
 TRIM:

P-001 A/B/C
 OIL EXPORT PUMPS
 22 MW
 15 barg / 170°C
 5 barg DISCHARGE PRESSURE / 136°C
 YES
 CARBON STEEL



PRODUCTS AND TECHNOLOGY DEVELOPED IN U.S.A., OR BY CITIZENS OF THE U.S.A. ARE DEEMED TO BE OF U.S. ORIGIN AND THEREBY SUBJECT TO U.S. EXPORT CONTROL LAWS.
 THE EXPORT OR RE-EXPORT OF U.S. ORIGIN TECHNOLOGY BY ANY MEANS, INCLUDING DATA TRANSFER, IS PROHIBITED EXCEPT IN ACCORDANCE WITH U.S. LAW AND POWERWELL SERVICES POLICY.



NO.	REVISION	DATE	BY	CHK.	APPV.	DATE	SCALE	PROJECT	PROJECT NO.	DATE	DATE	DATE
1	INITIAL ISSUE		KW	AJD		25 Jul 06		06-PE0003A		4 Aug 2006	4 Aug 2006	4 Aug 2006
2	ISSUED AS INDICATED		KW	BT	FS	22 Aug 06		06-PE0003A		4 Aug 2006	4 Aug 2006	4 Aug 2006

NOTES:
 1. MIN FLOW RECYCLE LINE
 2. TEMP SWITCHES HAT TYPE STRAINER FOR COMMISSIONING ONLY

© Design Rights POWERWELL SERVICES.
 This document and the information it contains is confidential and the property of POWERWELL SERVICES and is not to be reproduced, communicated to a third party or used in any manner whatsoever without the prior written consent of POWERWELL SERVICES.

PIPING AND INSTRUMENTATION DIAGRAM
 EXPORT OIL PUMPS
 OIL PROCESSING FACILITY
 DWG. NO. 06-PE0003A-5-2004
 REV. NO. 2