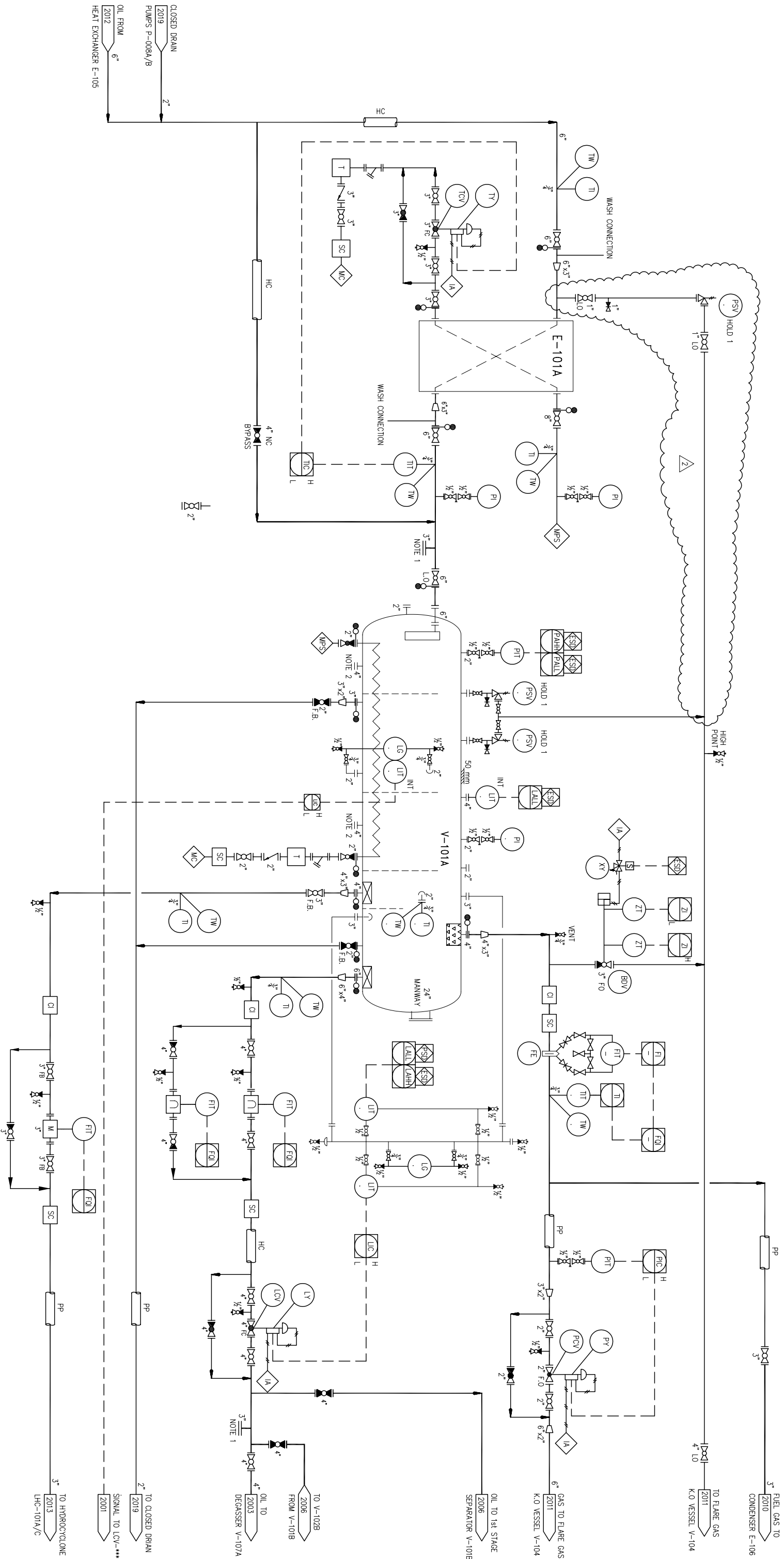


ITEM No: E-101A
 UNIT: CRUDE HEATER
 SIZE/DUTY: 508mm OD x 1600mm I/D / 4190 KW
 DES. PRESS./TEMP: 13 barg / 220°C
 O.S. PRESS./TEMP: 11 barg / 184°C SATURATED STEAM
 INSULATION: 50mm
 TRIM: C.S. SHELL 316L ST/SIL PLATE

V-101A
 1st STAGE SEPARATOR
 SIZE/DUTY: 1981mm OD x 6050mm IAH/IAH
 DES. PRESS./TEMP: 13 barg / 170°C
 O.S. PRESS./TEMP: 10 barg / 140°C
 INSULATION: 50mm
 TRIM: C.S. SHELL 316L ST/SIL PLATE
 CARBON STEEL - INTERNALLY COATED



HOLDS:
 1. PSV SIZE 18C

PRODUCTS AND TECHNOLOGY DEVELOPED IN U.S.A., OR BY CITIZENS OF THE U.S.A. ARE DEEMED TO BE OF U.S. ORIGIN AND THEREBY SUBJECT TO U.S. EXPORT CONTROL LAWS. THE EXPORT OR RE-EXPORT OF U.S. ORIGIN TECHNOLOGY BY ANY MEANS, INCLUDING DATA TRANSFER, IS PROHIBITED EXCEPT IN ACCORDANCE WITH U.S. LAW AND POWERWELL SERVICES POLICY.

NOTES:
 1. FOR FUTURE CONNECTION OF PETROBRAS HYDROCYCLONE SEPARATOR PACKAGE
 2. FOR FUTURE ADDITION OF SAND JETTING SYSTEM

© Design Rights POWERWELL SERVICES.
 This document and the information it contains is confidential and the property of POWERWELL SERVICES and is not to be reproduced, communicated to a third party or used in any manner whatsoever without the prior written consent of POWERWELL SERVICES.

NO.	REVISION	DATE	BY	CHK. BY	APPV. BY
1	INITIAL ISSUE				
2	REVISED AS INDICATED				

DATE	ENGR. APPV.	DATE	ENGR. APPV.
25 July 2006	K. Ward	4 Aug 2006	N. Worston
4 Aug 2006	A. Davis	4 Aug 2006	F. Sillbeck

DATE: 4 Aug 2006
 PROJECT: PETROJARL SRI
 SCALE: NONE
 DWG. NO: 06-PE0003A-5-2002
 PIPING AND INSTRUMENTATION DIAGRAM
 CRUDE HEATER/1st STAGE SEPARATOR TRAIN 'A'
 OIL PROCESSING FACILITY

