

A-101A/B

CHOKE

UNIT:
 SIZE/DUTY:
 DES. PRESS./TEMP:
 OPER. PRESS.:
 TRIM:

8"
 140 barg / 80°C
 TBA
 CARBON STEEL

E-104A

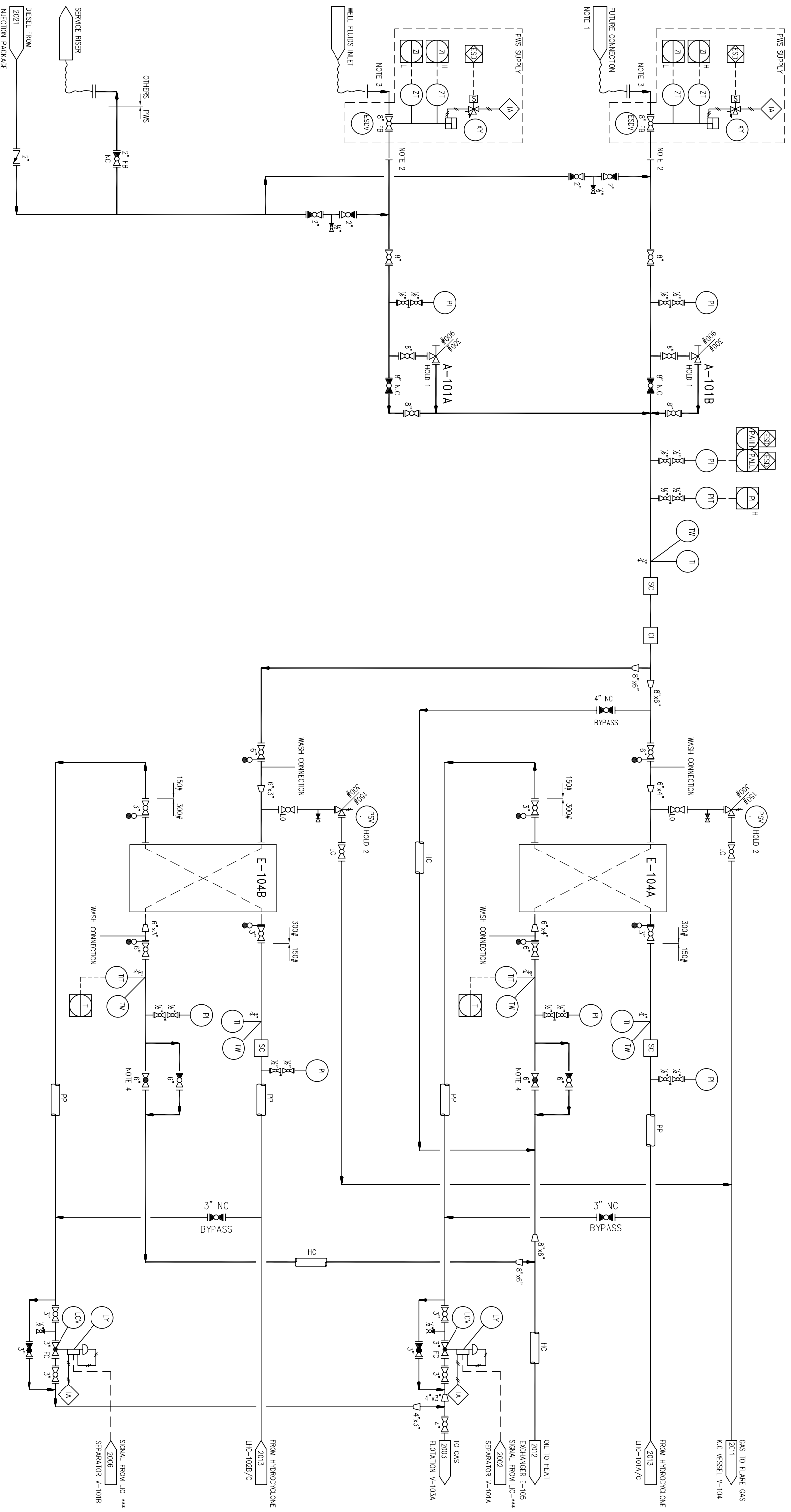
PRODUCED WATER HEAT RECOVERY EXCHANGER

610mm OD x 1106 T/T / 2800 kW
 50 barg / 250°C
 TBA
 C.S SHELL 316L ST/STL PLATE

E-104B

PRODUCED WATER HEAT RECOVERY EXCHANGER

508mm OD x 1273 T/T / 1900 kW
 50 barg / 250°C
 TBA
 C.S SHELL 316L ST/STL PLATE



HOLDS:

1. CHOKE SIZE 1BC
2. PSV SIZE 1BC

NOTES:

1. FOR FUTURE CONNECTION
2. PIPING FROM ESOV/RISER MANIFOLD TO PROCESS PLANT BY OTHERS
3. PIPING FROM ESOV TO RISER MANIFOLD BY OTHERS
4. V-TYPE BALL VALVE

PRODUCTS AND TECHNOLOGY DEVELOPED IN U.S.A., OR BY CITIZENS OF THE U.S.A. ARE DEMED TO BE OF U.S. ORIGIN AND THEREBY SUBJECT TO U.S. EXPORT CONTROL LAWS.
 THE EXPORT OR RE-EXPORT OF U.S. ORIGIN TECHNOLOGY BY ANY MEANS, INCLUDING DATA TRANSFER, IS PROHIBITED EXCEPT IN ACCORDANCE WITH U.S. LAW AND POWERWELL SERVICES POLICY.

NO.	REVISION	DATE	BY	CHK. BY	DATE	PROJECT NO.	SCALE	REF. NO.
1	INITIAL ISSUE							
2	DESIGN AND REVISION							

PowerWell TESTING™

PIPING AND INSTRUMENTATION DIAGRAM
 RECOVERY HEATERS AND CHOKE MANIFOLD
 OIL PROCESSING FACILITY
 06-PE0003A-5-2001