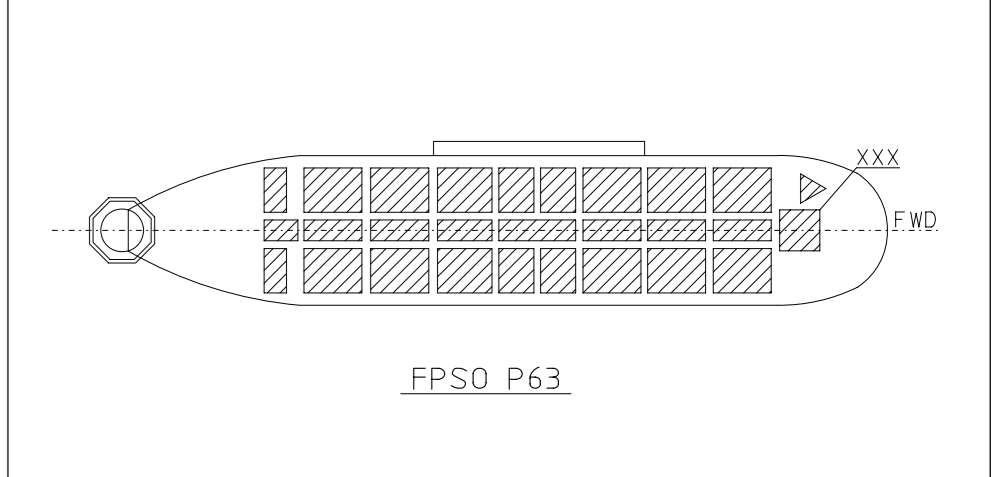


KEY PLAN



REFERENCE DOCUMENTS

- 1 - A 9378-01-05100-0028-PPRG DESIGN GENERAL ARRANGEMENT PLAN PLAN OVERVIEW UPPER LEVEL
- 2 - A 9378-01-05100-0031-PPRG DESIGN GENERAL ARRANGEMENT PLAN PLAN OVERVIEW LOWER LEVEL

GENERAL NOTES

- 1 - ALL DIMENSIONS, COORDINATES AND ELEVATIONS ARE IN MILLIMETRE.

REV.	DESCRIPTION	DATE	EXEC.	CHECK	APPROV.
0	ORIGINAL ISSUE FOR INFORMATION	24/SEP/19	RGA	RAC	NLO
<small>THE INFORMATION CONTAINED IN THIS DOCUMENT IS THE SOLE PROPERTY OF PETROBRAS. IT IS NOT TO BE USED FOR PURPOSES OTHER THAN THOSE SPECIFICALLY INDICATED HEREIN. FROM STANDARDS AS STIPULATED BY NORMAS REGULADORAS DE PROJETO - NR-01 - 18/08/2015</small>					
PPTBV PPTBV PPTBV		1-DE-P63.000-T.16-002.dwg 1-DE-P63.000-T.16-002.dwg 1-DE-P63.000-T.16-002.dwg			
PAPA-TERRA S.V. ENGENHARIA / IEEPT / IEP63		UN-BC			
PROJ: PAPA-TERRA FIELD DEVELOPMENT					
AREA: PETROBRAS 63 (P-63)					
TITULO: TOPSIDES - GENERAL ARRANGEMENT - VIEW					
DATE	DESIGN	CHECK	DATE	DESIGN	DATE
24/SEP/19	RGA	RAC	24/SEP/19	RGA	24/SEP/19
I-DE-P63.000-T.16-002					