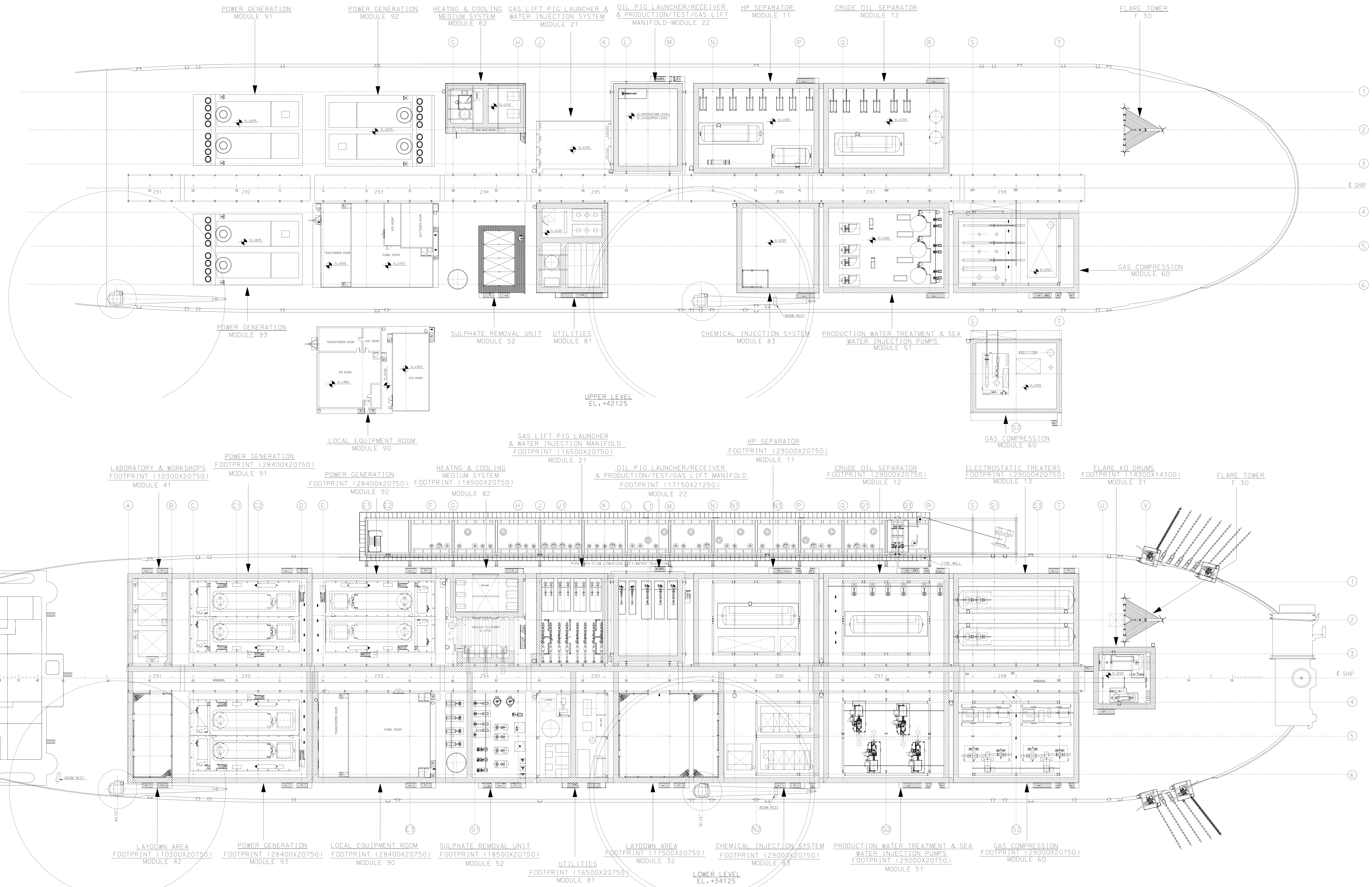


MODULE	DRAWING No.	TITLE
M 11	I-DE-P63.M11-T.16-001	HP SEPARATOR-LOWER LEVEL
	I-DE-P63.M11-T.16-002	HP SEPARATOR-UPPER LEVEL
M 12	I-DE-P63.M12-T.16-001	CRUDE OIL SEPARATOR-LOWER LEVEL
	I-DE-P63.M12-T.16-002	CRUDE OIL SEPARATOR-UPPER LEVEL
M 13	I-DE-P63.M13-T.16-001	ELECTROSTATIC TREATERS
M 21	I-DE-P63.M21-T.16-001	GAS LIFT PIG LAUNCHER & WATER INJECTION MANIFOLD
	I-DE-P63.M22-T.16-001	OIL PIG LAUNCHER/RECEIVER & PRODUCTION/TEST/GAS LIFT MANIFOLD-SECOND LEVEL
	I-DE-P63.M22-T.16-002	OIL PIG LAUNCHER/RECEIVER & PRODUCTION/TEST/GAS LIFT MANIFOLD-UPPER LEVEL
M 31	I-DE-P63.M31-T.16-001	FLARE KO DRUMS
M 32	I-DE-P63.M32-T.16-001	LAYDOWN AREA
M 41	I-DE-P63.M41-T.16-001	LABORATORY & WORKSHOPS
M 42	I-DE-P63.M42-T.16-001	LAYDOWN AREA
	I-DE-P63.M51-T.16-001	PRODUCTION WATER TREATMENT & SEAWATER INJECTION PUMPS-LOWER LEVEL
	I-DE-P63.M51-T.16-002	PRODUCTION WATER TREATMENT & SEAWATER INJECTION PUMPS-UPPER LEVEL
M 52	I-DE-P63.M52-T.16-001	SULPHATE REMOVAL UNIT
	I-DE-P63.M60-T.16-001	GAS COMPRESSION-LOWER LEVEL
	I-DE-P63.M60-T.16-002	GAS COMPRESSION-SECOND LEVEL
	I-DE-P63.M60-T.16-003	GAS COMPRESSION-UPPER LEVEL
	I-DE-P63.M81-T.16-001	UTILITIES-LOWER LEVEL
	I-DE-P63.M81-T.16-002	UTILITIES-UPPER LEVEL
M 82	I-DE-P63.M82-T.16-001	HEATING & COOLING MEDIUM SYSTEM-LOWER LEVEL
	I-DE-P63.M82-T.16-002	HEATING & COOLING MEDIUM SYSTEM-UPPER LEVEL
M 83	I-DE-P63.M83-T.16-001	CHEMICAL INJECTION SYSTEM-LOWER LEVEL
	I-DE-P63.M83-T.16-002	CHEMICAL INJECTION SYSTEM-UPPER LEVEL
M 90	I-DE-P63.M90-E.16-01000A	LOCAL EQUIPMENT ROOM
M 91	I-DE-P63.M91-T.16-001	POWER GENERATION
M 92	I-DE-P63.M92-T.16-001	POWER GENERATION
M 93	I-DE-P63.M93-T.16-001	POWER GENERATION



KEY PLAN

FP63

REFERENCE DOCUMENTS

- 1 - A 1931-04-05064-018-RRRG DESIGN-GENERAL ARRANGEMENT PLAN-FLOOR OVERVIEW UPPER LEVEL
- 2 - A 1931-04-05064-018-RRRG DESIGN-GENERAL ARRANGEMENT PLAN-FLOOR OVERVIEW LOWER LEVEL

GENERAL NOTES

1 - ALL DIMENSIONS, COORDINATES AND ELEVATIONS ARE IN MILLIMETRE.

REV.	DESCRIPTION	DATE	EXEC.	CHECK	APPROV.
A	GENERAL REVISION-FOR INFORMATION	13/SEP/10	RAJ	NLO	NLO
B	ORIGINAL ISSUE FOR COMMENTS	19/JUL/10	RAJ	NLO	NLO

THE INFORMATION CONTAINED IN THIS DOCUMENT IS PETROBRAS PROPERTY AND MAY NOT BE USED FOR PURPOSES OTHER THAN THOSE SPECIFICALLY INDICATED HEREIN. FORM STANDARDISED BY STANDARD PETROBRAS N.UM.1 - REV. F. JUNHO 8 - SHEET 04/06.

PROJECT: PAPA-TERRA 10
 DRAWING: I-DE-P63.000-T.16-001-A.dgn
 FILE: PPTBV
 SHEET: 04/060000130.2
PAPA-TERRA S.V. ENGENHARIA/E/EPT/IEP63

CLIENT: UN-BC
 AREA: PAPA-TERRA FIELD DEVELOPMENT
 TITLE: PETROBRAS 63 (P-63)
 GENERAL ARRANGEMENT-PLAN

DATE	QUIP	SCALE	REAL	SCALE	NLO	SCALE	NLO
19/JUL/10		1:250		1:1		1:250	1:250

I-DE-P63.000-T.16-001