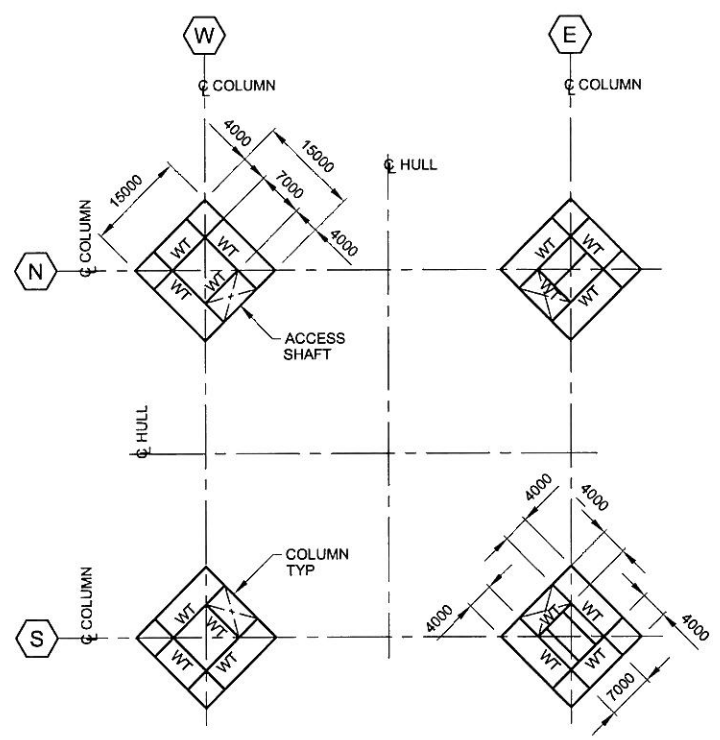
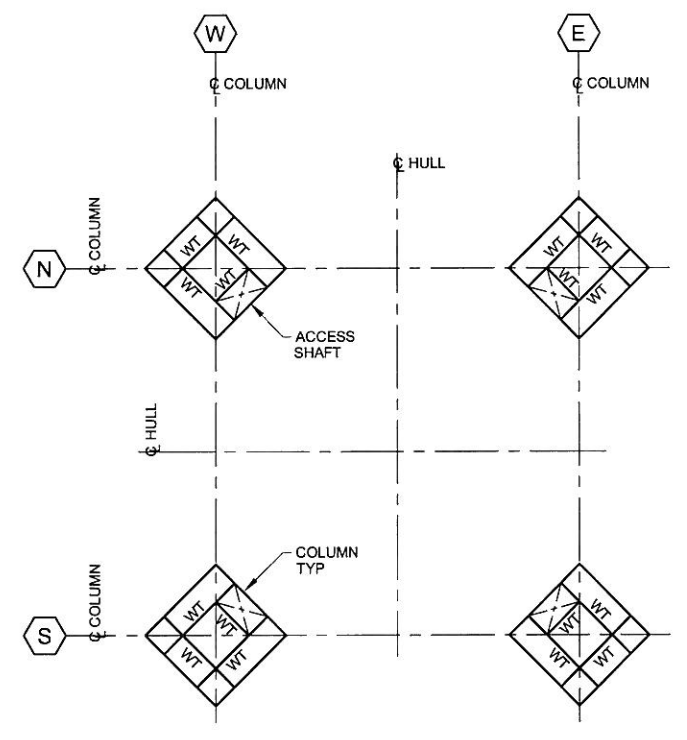


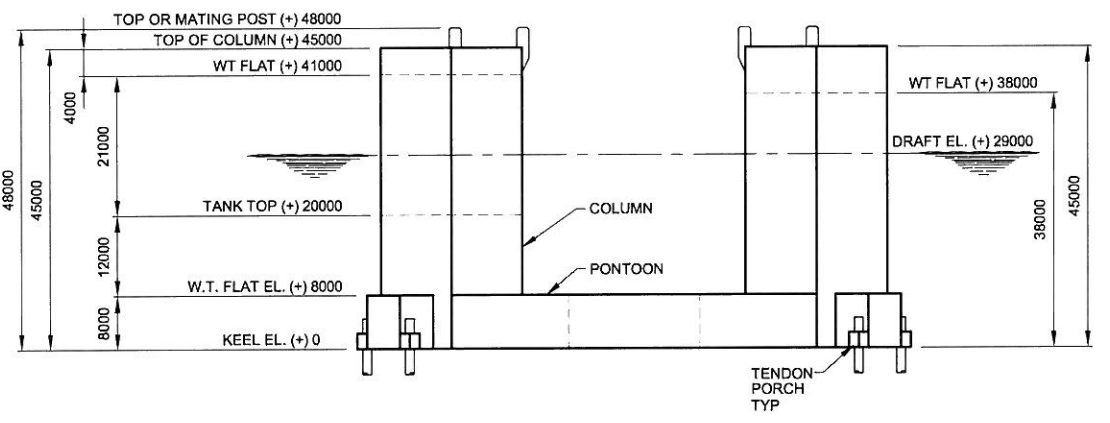
PLAN ABOVE EL. (+) 0



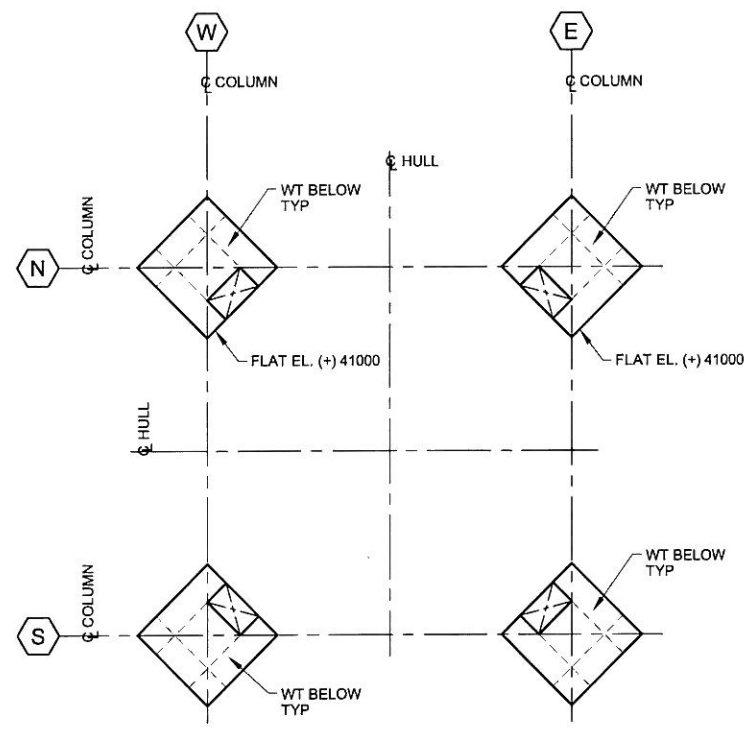
PLAN ABOVE EL. (+) 8000



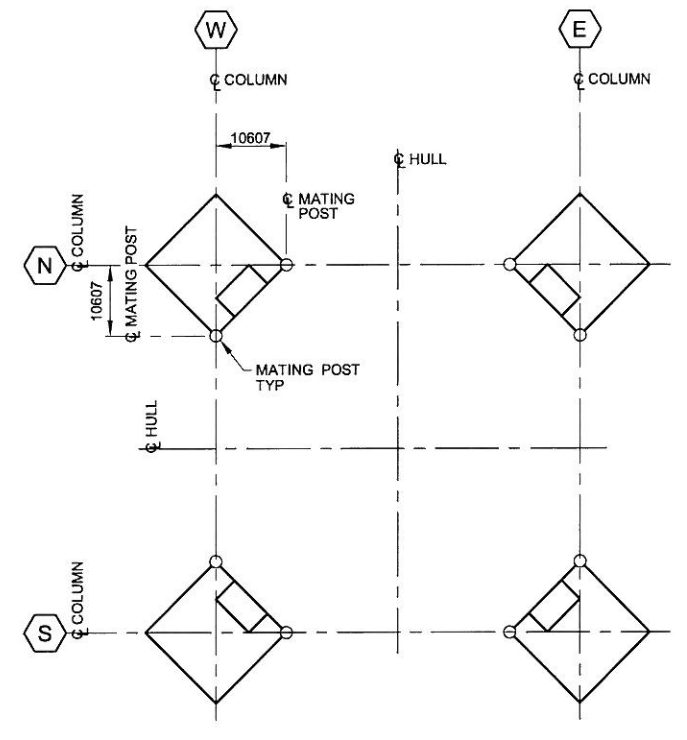
PLAN ABOVE EL. (+) 20000



ELEVATION A-A



PLAN ABOVE EL. (+) 41000



PLAN ABOVE EL. (+) 45000

NOTES:
 THIS DRAWING IS THE SOLE PROPERTY OF FloaTEC, LLC AND SHALL BE RETURNED UPON WRITTEN REQUEST. IT SHALL NOT BE REPRODUCED, OR USED DIRECTLY OR INDIRECTLY IN ANY WAY DETRIMENTAL TO THE INTERESTS OF FloaTEC, LLC. ALL RIGHTS RESERVED.

REV	DATE	BY	DESCRIPTION	CHK	ENGR	APPR	APPR	APPR
B	9/6/09	HL	ISSUED FOR REVIEW	HL	HL	HL	HL	HL
A			ISSUED FOR REVIEW					

81055
STATUS DATE
CLIENT
STRUCTURAL
ARCHITECT
NAVAL ARCHITECT
PROCESS
INSTRUMENT

81055	PROJECT	BY	DATE
MECHANICAL	DESIGNED BY	B.Z.	06/08/2009
ELECTRICAL	DRAWN BY	L.renfoe	06/08/2009
FIRE/SAFETY	CHECKED BY		
DRAFTING	APPROVED BY		
FLOW SHEETS	SCALE:	1:500M	DATE

BR PETROBRAS

FloaTEC

81055

PETROBRAS PAPA TERRA

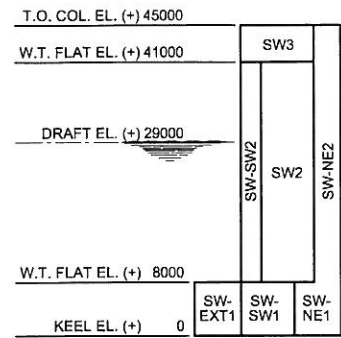
HULL PRIMARY STEEL OVERVIEW OF STRUCTURE PRINCIPAL DIMENSIONS

DWG NO. 81055-N-DR00-HL-0001

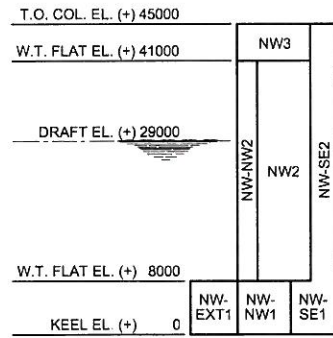
REV. B

F:\DRAWING\PROJECTS\81055 - Petrobras Papa Terra (BR00)\81055-N-DR00-HL-0001_08.dwg

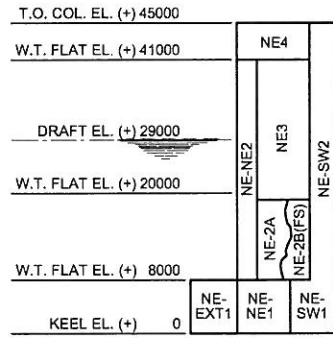
HL



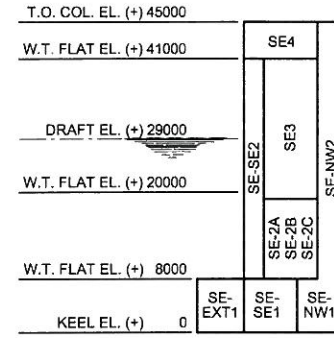
SECTION A-A
SW COLUMN



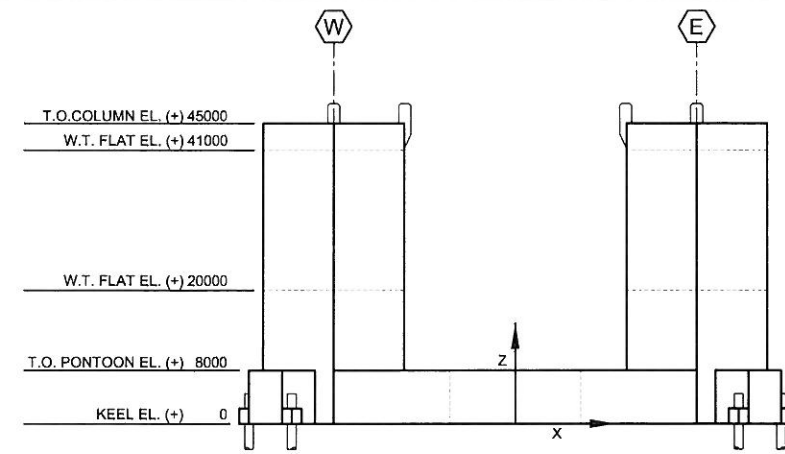
SECTION B-B
NW COLUMN



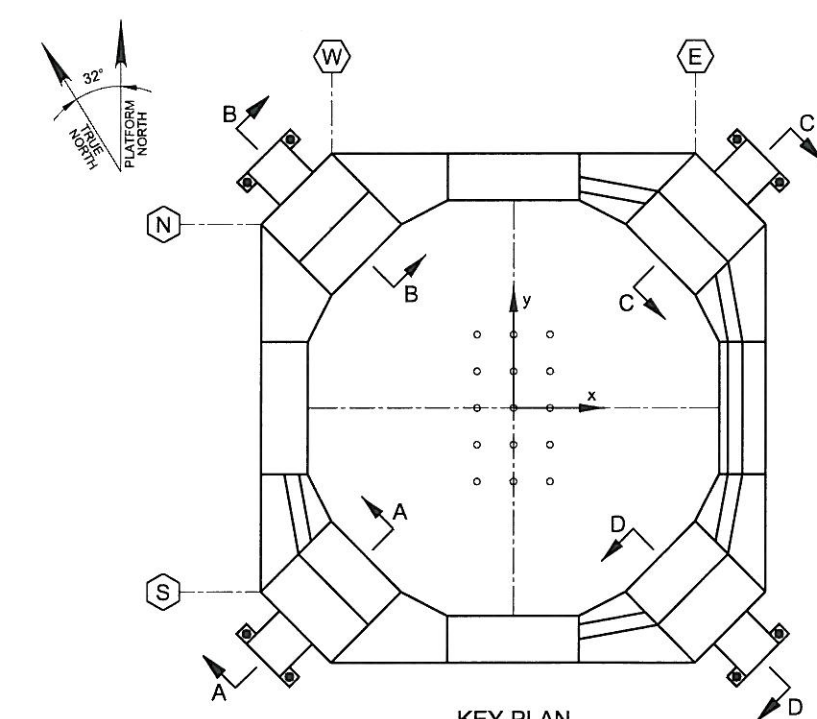
SECTION C-C
NE COLUMN



SECTION D-D
SE COLUMN



KEY ELEVATION



KEY PLAN

HULL TANK CAPACITY TABLE						
SW COLUMN						
TANKS/SPACES	DESCRIPTION	VOL (m3)	WT (MT)	XCG(m)	YCG(m)	ZCG(m)
SW-SW1	BALLAST	931	954	-29.97	-29.98	4.00
SW-NE1	PASSIVE PUMPROOM	751	769	-25.06	-24.23	4.00
SW-EXT1	VOID	380	390	-35.28	-35.28	4.00
SW2	VOID	1,568	1,608	-27.50	-27.50	24.50
SW-S2	VOID	512	525	-27.50	-35.28	23.40
SW-NW2	VOID	1,408	1,444	-29.98	-22.20	24.05
SW-SE2	VOID	1,408	1,444	-22.20	-29.98	24.05
SW-SW2	VOID	896	919	-31.39	-31.39	23.80
SW-W2	VOID	512	525	-35.28	-27.50	23.40
SW-NE2	PASSIVE ACCESS SHAFT	881	903	-23.61	-23.61	26.50
SW3	MACHINERY	670	687	-28.05	-28.05	42.57

NW COLUMN						
TANKS/SPACES	DESCRIPTION	VOL (m3)	WT (MT)	XCG(m)	YCG(m)	ZCG(m)
NW-NW1	BALLAST	931	954	-29.97	29.98	4.00
NW-SE1	PASSIVE PUMPROOM	714	732	-24.67	24.67	4.00
NW-EXT1	VOID	380	390	-35.28	35.28	4.00
NW2	VOID	1,568	1,608	-27.50	27.50	24.50
NW-N2	VOID	512	525	-27.50	35.28	23.40
NW-NE2	VOID	1,408	1,444	-22.20	29.98	24.05
NW-NW2	VOID	896	919	-31.39	31.39	23.80
NW-SW2	VOID	1,408	1,444	-29.98	22.20	24.05
NW-W2	VOID	512	525	-35.28	27.50	23.40
NW-SE2	PASSIVE ACCESS SHAFT	881	903	-23.61	23.61	26.50
NW3	MACHINERY	670	687	-28.05	28.05	42.57

SE COLUMN						
TANKS/SPACES	DESCRIPTION	VOL (m3)	WT (MT)	XCG(m)	YCG(m)	ZCG(m)
SE-SE1	BALLAST	931	955	29.98	-29.98	4.00
SE-NW1	ACTIVE PUMPROOM	788	807	24.62	-24.62	4.00
SE-EXT1	VOID	380	390	35.28	-35.28	4.00
SE-E2	VOID	512	525	35.28	-27.50	23.40
SE-NE2	VOID	1,408	1,444	29.98	-22.20	24.10
SE-S2	VOID	512	525	27.50	-35.28	23.40
SE-SE2	VOID	896	919	31.39	-31.39	23.80
SE-SW2	VOID	1,408	1,444	22.20	-29.98	24.10
SE-NW2	ACTIVE ACCESS SHAFT	881	903	23.61	-23.61	26.50
SE-2A	DIESEL OIL	143	124	25.64	-29.36	13.99
SE-2B	DIESEL OIL	285	248	27.50	-27.50	14.00
SE-2C	DIESEL OIL	143	124	29.35	-25.64	14.00
SE3	VOID	998	1,023	27.50	-27.50	30.50
SE4	MACHINERY	670	687	28.05	-28.05	42.57

NE COLUMN						
TANKS/SPACES	DESCRIPTION	VOL (m3)	WT (MT)	XCG(m)	YCG(m)	ZCG(m)
NE-NE1	BALLAST	931	955	29.98	29.98	4.00
NE-SW1	ACTIVE PUMPROOM	788	807	24.62	24.62	4.00
NE-EXT1	VOID	380	390	35.28	35.28	4.00
NE-E2	VOID	512	525	35.28	27.50	23.40
NE-N2	VOID	512	525	27.50	35.28	23.40
NE-NE2	VOID	896	919	31.39	31.39	23.80
NE-NW2	VOID	1,408	1,444	22.20	29.98	24.10
NE-SE2	VOID	1,408	1,444	29.98	22.20	24.10
NE-SW2	ACTIVE ACCESS SHAFT	881	903	23.61	23.61	26.50
NE4	MACHINERY	670	687	28.05	28.05	42.57
NE3	VOID	998	1,023	27.50	27.50	30.50
NE-2A	FRESH WATER	285	285	26.26	28.74	14.00
NE-2B	FRESH WATER	285	285	26.26	26.26	14.00

PONTOONS						
TANKS/SPACES	DESCRIPTION	VOL (m3)	WT (MT)	XCG(m)	YCG(m)	ZCG(m)
SPE1	BALLAST	871	893	16.94	-34.17	4.00
SPW1	BALLAST	915	938	-16.88	-34.09	4.00
SP1	VOID	1,075	1,102	0.00	-34.61	4.00
EPN1	BALLAST	872	894	34.16	16.94	3.99
EPS1	BALLAST	872	894	34.16	-16.94	3.99
EP1	VOID	1,001	1,026	34.69	0.00	4.00
NPE1	BALLAST	871	893	16.94	34.17	4.00
NPW1	BALLAST	915	938	-16.88	34.09	4.00
NP1	VOID	1,075	1,102	0.00	34.61	4.00
WPN1	BALLAST	915	938	-34.09	16.88	3.98
WPS1	BALLAST	872	894	-34.16	-16.94	3.97
WP1	VOID	1,075	1,102	-34.61	0.00	4.00
EP-TUN1	TUNNEL	73	75	33.51	0.00	4.00

NOTES:

THIS DRAWING IS THE SOLE PROPERTY OF FloaTEC, LLC AND SHALL BE RETURNED UPON WRITTEN REQUEST. IT SHALL NOT BE TRADED OR REPRODUCED, OR USED DIRECTLY OR INDIRECTLY IN ANY WAY DETRIMENTAL TO THE INTERESTS OF FloaTEC, LLC. ALL RIGHTS RESERVED.

REV	DATE	BY	DESCRIPTION	CHK	ENGR	APPR	APPR	APPR
B	06/08/2009	HL	ISSUED FOR REVIEW	HL	SM			
A			ISSUED FOR REVIEW					

81055		BR PETROBRAS	
STATUS DATE			
CLIENT	BY	DATE	PROJECT
STRUCTURAL			MECHANICAL
ARCHITECT			ELECTRICAL
NAVAL ARCHITECT			FIRE/SAFETY
PROCESS			DRAFTING
INSTRUMENT			FLOW SHEETS
DESIGNED BY	B.Z.	06/08/2009	
DRAWN BY	N. MACKAY	06/08/2009	
CHECKED BY			
APPROVED BY			
SCALE:	1:500M	DATE	

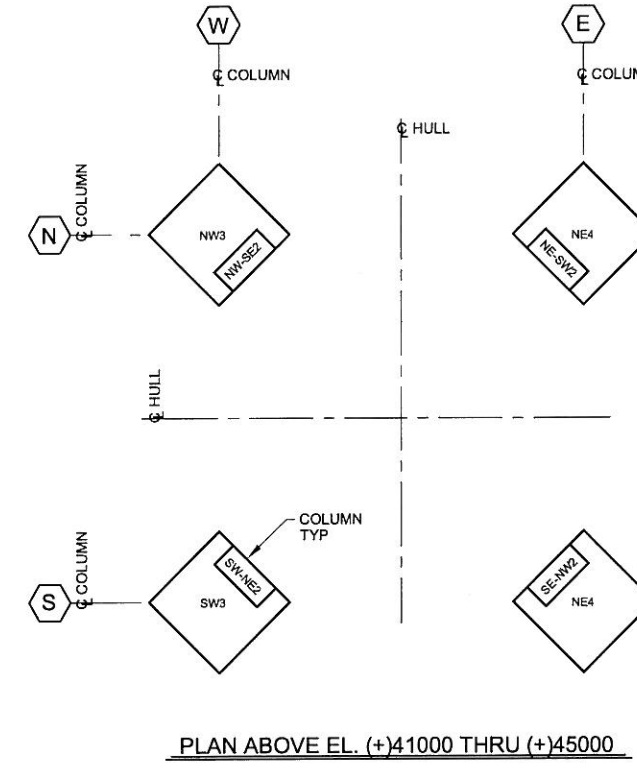
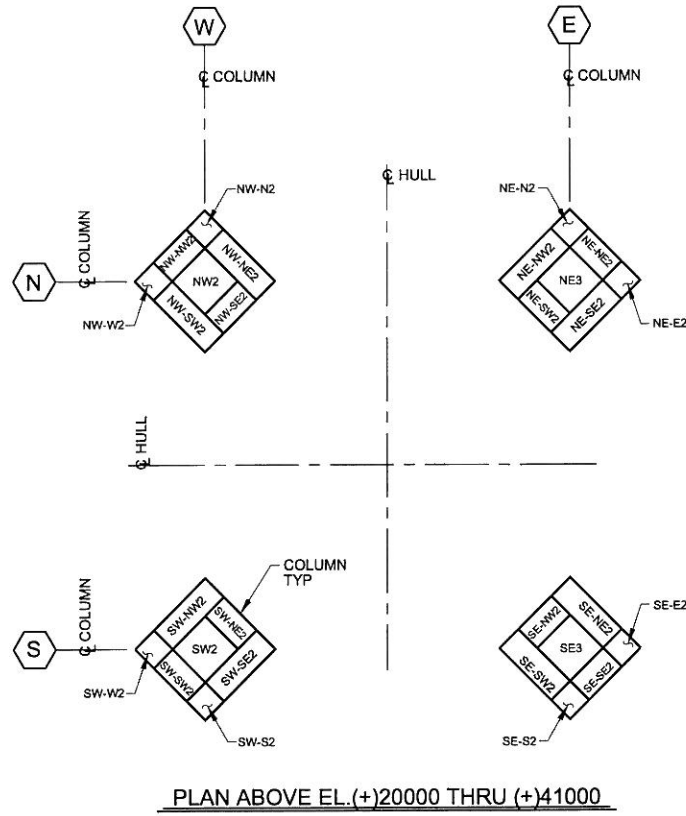
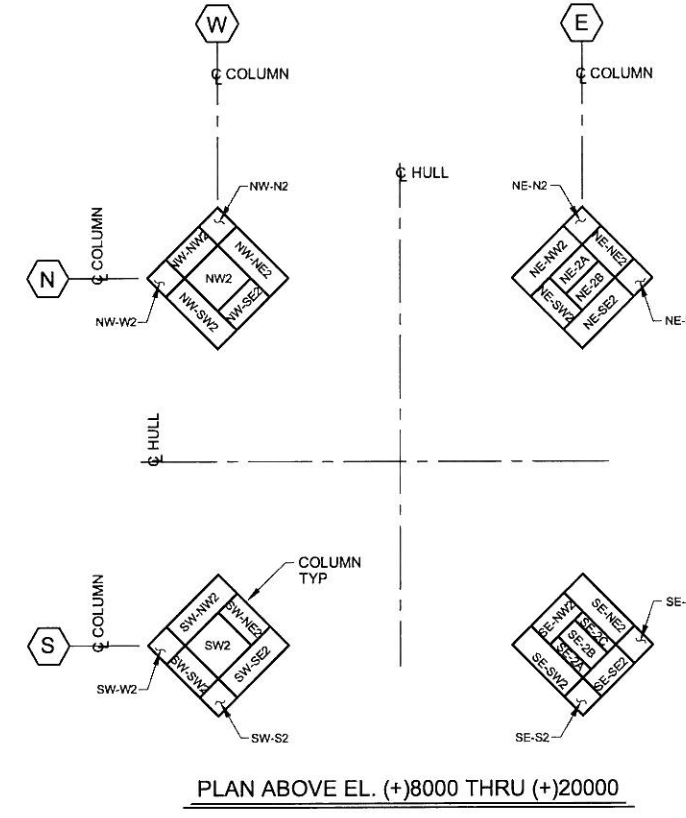
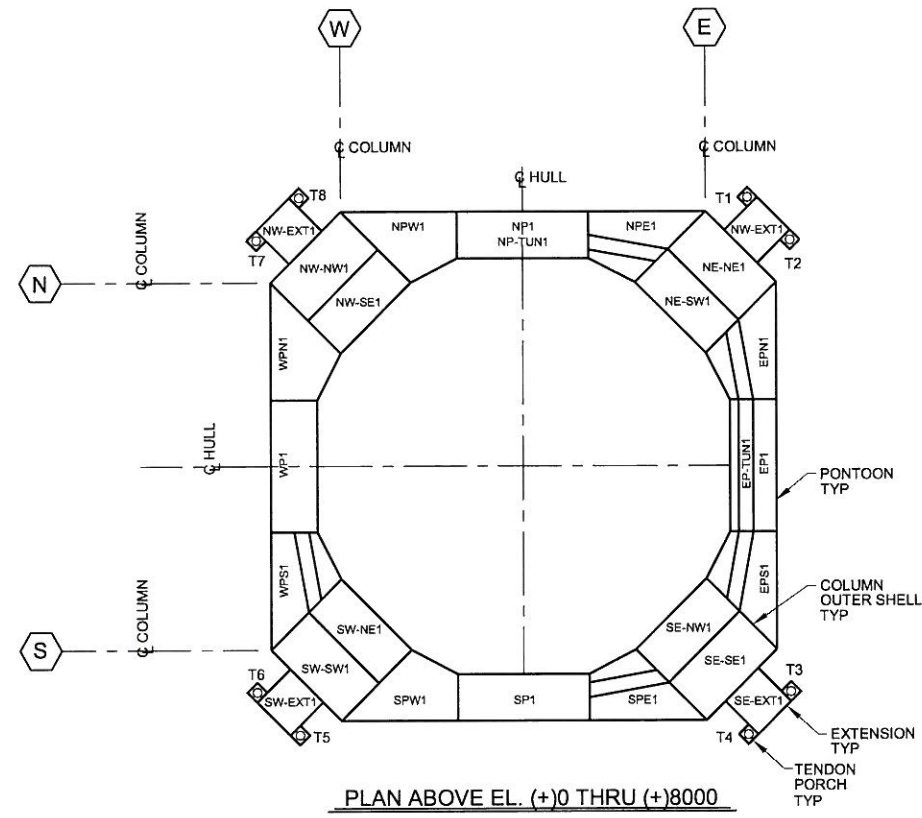
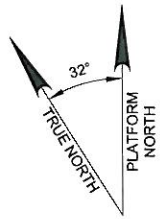
FloaTEC

PETROBRAS PAPA TERRA

OVERVIEW OF STRUCTURE COMPARTMENTATION PLAN

DWG NO. 81055-N-DR00-HL-0002

REV. B



NOTES:

THIS DRAWING IS THE SOLE PROPERTY OF FloaTEC, LLC AND SHALL BE RETURNED UPON WRITTEN REQUEST. IT SHALL NOT BE TRACED OR REPRODUCED, OR USED DIRECTLY OR INDIRECTLY IN ANY WAY DETRIMENTAL TO THE INTERESTS OF FloaTEC, LLC. ALL RIGHTS RESERVED.

REFERENCE DRAWINGS

REV	DATE	BY	DESCRIPTION	CHK	ENGR	APPR	APPR	APPR
A	4/10/09		ISSUED FOR REVIEW					
B			ISSUED FOR REVIEW					

81055



STATUS DATE		STATUS DATE	
BY	DATE	BY	DATE
CLIENT		PROJECT	
STRUCTURAL		MECHANICAL	
ARCHITECT		ELECTRICAL	
NAVAL ARCHITECT		FIRE/SAFETY	
PROCESS		DRAFTING	
INSTRUMENT		FLOW SHEETS	

DESIGNED BY	H.L.	06/27/2009
DRAWN BY	Lrenfro	06/27/2009
CHECKED BY		
APPROVED BY		
SCALE:	1:500M	DATE

PETROBRAS	PAPA TERRA
OVERVIEW OF STRUCTURE COMPARTMENTATION PLAN	
DWG NO.	81055-N-DR00-HL-0003
REV.	B