

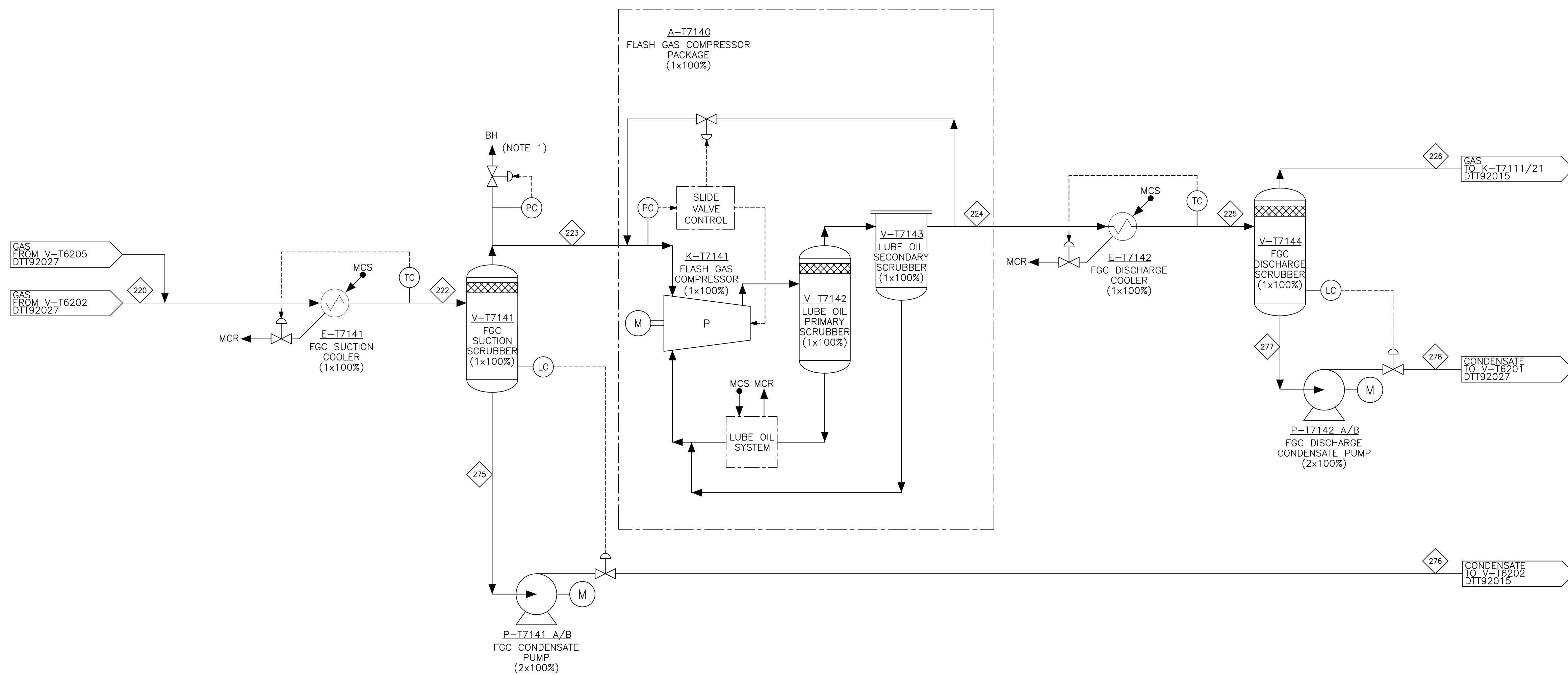
Status	Rev.	Description	Author	Checker	Discipline Engineer	Disc. Lead Engineer	Date
P	1	PRELIMINARY FOR INFORMATION	JEK	JEV	VPI	JEV	10/05/2011
I	1	INTERNAL DISCIPLINE CHECK	JEK	VPI	SHD	JEV	14/06/2011

NOTES:

1. VALVE USED FOR FLARING IF FGC IS OFFLINE.

HOLDS:

1. ALL EQUIPMENT DUTIES/CAPACITIES/SIZES ARE PRELIMINARY/ON HOLD.



Tag number	Description	Duty/Capacity/Size
E-T7141	FGC Suction Cooler	(HOLD 1) 5.0MW
V-T7141	FGC Suction Scrubber	(HOLD 1)
P-T7141 A/B	FGC Condensate Pump	(HOLD 1) 6KW (HYDR.)/12.5m3/h
K-T7141	Flash Gas Compressor	(HOLD 1) 1.4 MW
V-T7142	Lube Oil Primary Scrubber	(HOLD 1)
V-T7143	Lube Oil Secondary Scrubber	(HOLD 1)
E-T7142	FGC Discharge Cooler	(HOLD 1) 2.2MW
V-T7144	FGC Discharge Scrubber	(HOLD 1)
P-T7142 A/B	FGC Discharge Condensate Pump	(HOLD 1) 2KW (HYDR.)/12.5m3/hr

FPSO OSX-2

DRAWING ASSEMBLY: N/A TOTAL WEIGHT: N/A

SINGLE BUOY MOORINGS INC.
MARLY - SWITZERLAND
ENGINEERING OFFICES MONACO P.O. BOX 199
Tel: +377 92 05 15 00 Website: www.sbmoffshore.com

© 2011 COPYRIGHT by SBM Offshore NV or its affiliates. This document and its contents are the confidential property of SBM Offshore NV or its affiliates and as such this document, or any part thereof, may not be made known, be copied, or be modified or in any other way used without the express permission of SBM Offshore NV or its affiliates.

Client Drawing Number	DE-OSX2-0092-PRO-SBM-019	Client Revision	0
Drawing Title	TOPSIDES FLASH GAS COMPRESSION PFD	E.P.M	S.MATHER
Format	A1	SBM Project Number	SO 18070
		SBM Drawing Number	DTT92011
		SBM Revision	11

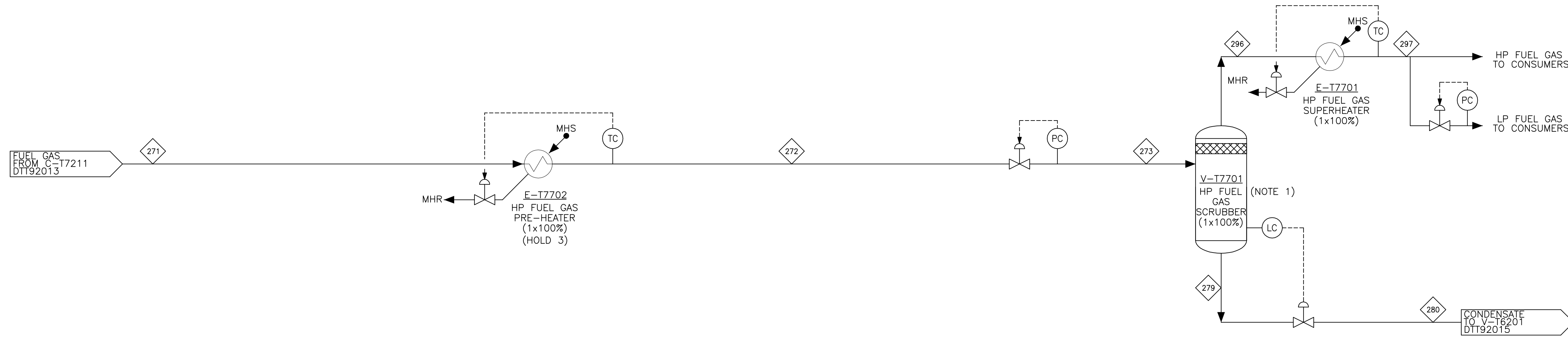
Status	Rev.	Description	Author	Checker	Discipline Engineer	Disc. Lead Engineer	Date
P	1	PRELIMINARY FOR INFORMATION	JEK	JEV	VPI	JEV	10/05/2011
I	1	INTERNAL DISCIPLINE CHECK	JEK	JEV	YAD	JEV	07/06/2011

NOTES:

1. HP FUEL GAS SCRUBBER SIZED TO PROVIDE A BUFFER VOLUME FOR FUEL GAS SUPPLY TO GAS TURBINES.

HOLDS:

1. DELETED.
2. EQUIPMENT DESIGN CAPACITIES.
3. HEAT EXCHANGER TYPE CONSIDERING TUBE RUPTURE ISSUES.



(HOLD 2)

Tag Number	Description	Duty/Capacity/Size
E-T7702	HP Fuel Gas Pre-Heater (1 x 100%)	500KW
V-T7701	HP Fuel Gas scrubber	HOLD 2
E-T7701	HP Fuel Gas Superheater (1 X 100%)	750KW



FPSO OSX-2

DRAWING ASSEMBLY: N/A		TOTAL WEIGHT: N/A	
		SINGLE BUOY MOORINGS INC. MARLY - SWITZERLAND ENGINEERING OFFICES MONACO P.O. BOX 199 Tel: +377 92 05 15 00 Website: www.sbmoffshore.com	
© 2011 COPYRIGHT by SBM Offshore NV or its affiliates. This document and its contents are the confidential property of SBM Offshore NV or its affiliates and as such this document, or any part thereof, may not be made known, be copied, or be multiplied or in any other way used without the express permission of SBM Offshore NV or its affiliates.		Client Drawing Number: DE-OSX2-0092-PRO-SBM-020 Client Revision: 0	
Drawing Title: TOPSIDES FUEL GAS SYSTEM PFD		E.P.M. S.MATHER Date:	
Format: A1	SBM Project Number: SO 18070	SBM Drawing Number: DTT92012	SBM Revision: 11

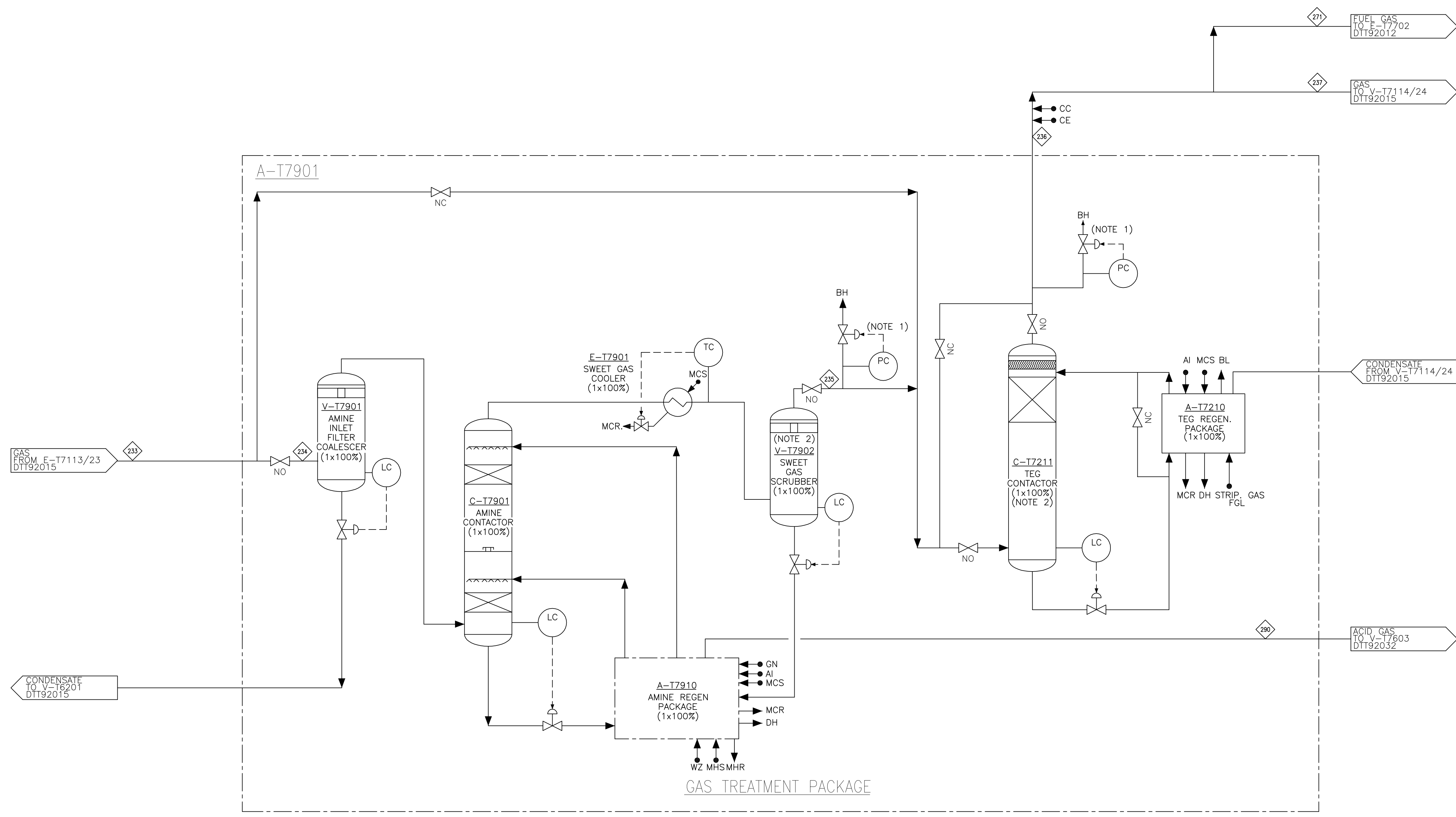
Status	Rev.	Description	Author	Checker	Discipline Engineer	Disc. Lead Engineer	Date
P	1	PRELIMINARY FOR INFORMATION	JEK	JEV	VPI	JEV	10/05/2011
I	1	INTERNAL DISCIPLINE CHECK	JEK	VPI	SHD	JEV	14/06/2011

NOTES:


1. VALVE USED FOR FLOWING GAS TO HP FLARE TO ACHIEVE GAS SPECIFICATION DURING START-UP.
2. CYCLONE BUNDLE.

HOLDS:

1. ALL EQUIPMENT DUTIES/CAPACITIES/SIZES ARE PRELIMINARY/ON HOLD.




Tag number	Description	Duty/Capacity/Size
A-T7901	Gas Treatment Package	(HOLD 1) 1.5 MSm ³ /d (at 20°C)
V-T7901	Amine Inlet Filter Coalescer	(HOLD 1)
C-T7901	Amine Contactor	(HOLD 1)
E-T7901	Sweet Gas Cooler	(HOLD 1) 1MW
V-T7902	Sweet Gas Scrubber	(HOLD 1)
A-T7910	Amine Regeneration Package	(HOLD 1)
C-T7211	TEG Contactor	(HOLD 1)
A-T7210	TEG Regeneration Package	(HOLD 1)



FPSO OSX-2

DRAWING ASSEMBLY: N/A TOTAL WEIGHT: N/A



SINGLE BUOY MOORINGS INC.
MARLY - SWITZERLAND
ENGINEERING OFFICES MONACO P.O. BOX 199
Tel: +377 92 05 15 00 Website: www.sbmoffshore.com

© 2011 COPYRIGHT by SBM Offshore NV or its affiliates. This document and its contents are the confidential property of SBM Offshore NV or its affiliates and as such this document, or any part thereof, may not be made known, be copied, or be multiplied or in any other way used without the express permission of SBM Offshore NV or its affiliates.

Client Drawing Number DE-OSX2-0092-PRO-SBM-021		Client Revision 0
Drawing Title TOPSIDES GAS TREATMENT PFD		E.P.M. S.MATHER
Format A1		Date
SBM Project Number SO 18070	SBM Drawing Number DTT92013	SBM Revision 11

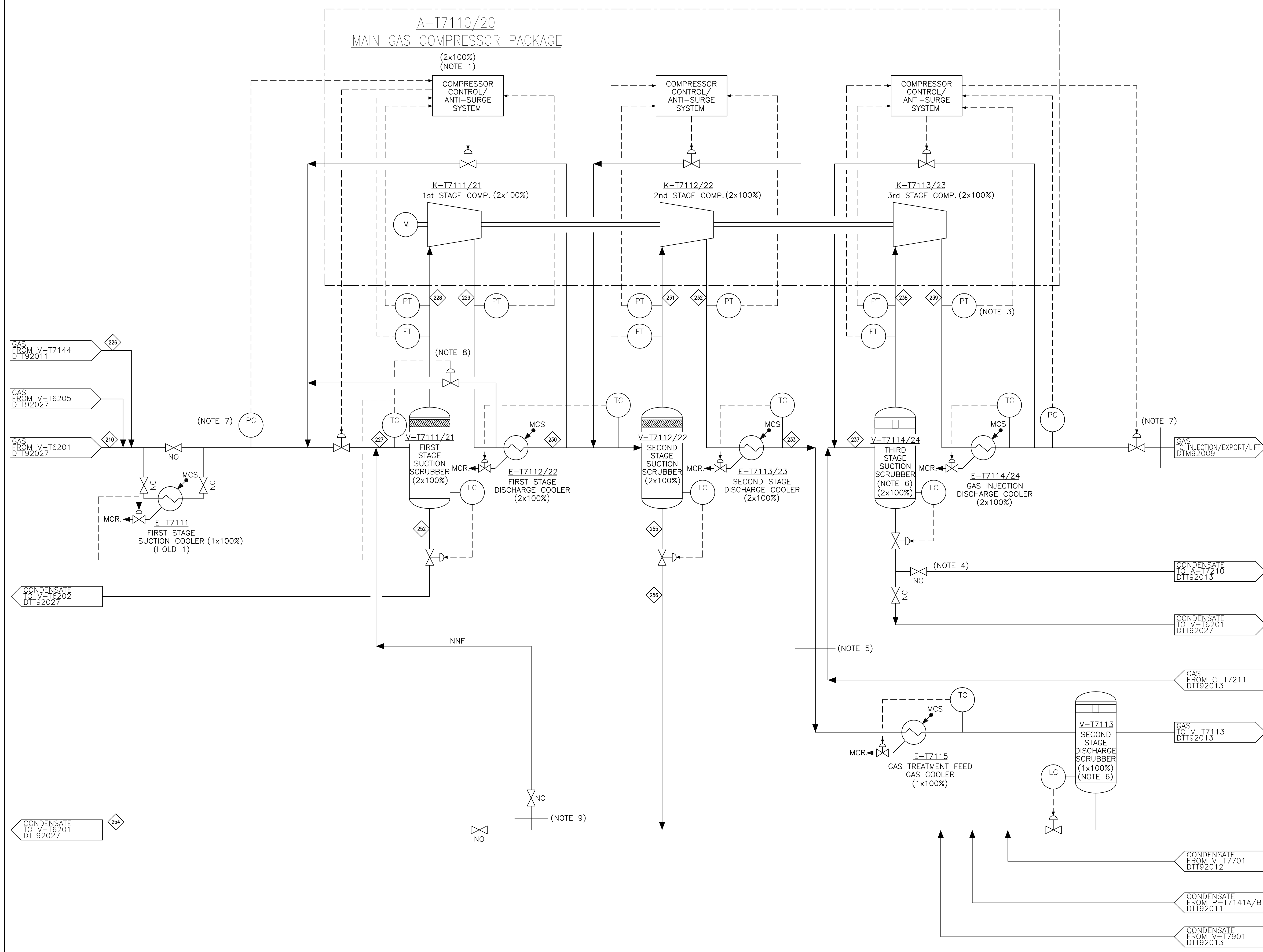
Status	Rev.	Description	Author	Checker	Discipline Engineer	Disc. Lead	Date
P	1	PRELIMINARY FOR INFORMATION	JEK	JEV	VPI	JEV	10/05/2011
I	1	INTERNAL DISCIPLINE CHECK	JEK	VPI	SHD	JEV	14/06/2011

NOTES:


1. CONSISTS OF TWO PARALLEL TRAINS (2x100%). ONLY ONE IS SHOWN FOR CLARITY. TRAINS SPLIT AT THE HEADER. BOTH TRAIN EQUIPMENT TAG NUMBERS ARE SHOWN.
2. DELETED.
3. HIGH DISCHARGE PRESSURE OVERRIDE.
4. DURING NORMAL OPERATION CONDENSATE WILL BE ROUTED TO TEG REGENERATION PACKAGE A-T7210.
5. MANIFOLD VALVES TO LINE UP THE GAS TREATMENT SYSTEM WITH THE COMPRESSION TRAIN IN OPERATION.
6. CYCLONE BUNDLE.
7. MANIFOLD VALVES TO LINE UP GAS WITH THE COMPRESSION TRAIN IN OPERATION.
8. FIRST STAGE HOT GAS BY-PASS.
9. MANIFOLD VALVES TO LINE UP CONDENSATE WITH THE COMPRESSION TRAIN IN OPERATION, BUT ONLY WHEN FLASH GAS COMPRESSOR IS OFFLINE. NORMAL CONDENSATE RETURN IS TO HP SEPARATOR V-T6201.

HOLDS:

1. REQUIREMENT FOR FIRST STAGE SUCTION COOLER FOR START-UP OR WHEN FGC NOT RUNNING.
2. ALL EQUIPMENT DUTIES/CAPACITIES/SIZES ARE PRELIMINARY/ON HOLD.



Tag number	Description	Duty/Capacity/Size
E-T7111	First Stage Suction Cooler	(HOLD 1)
A-T7110/20	Main Gas Compressor Packages	(HOLD 1) 11.0MW
V-T7111/12	First Stage Suction Scrubber	(HOLD 1) (each)
K-T7111/21	First Stage Compressor	(HOLD 1) (each) 4MW
E-T7112/22	First Stage Discharge Cooler	(HOLD 1) 7.3MW
V-T7112/22	Second Stage Suction Scrubber	(HOLD 1) (each)
K-T7112/22	Second Stage Compressor	(HOLD 1) (each) 4MW
E-T7113/23	Second Stage Discharge Cooler	(HOLD 1) (each) 5.6MW
E-T7115	Gas Treatment Feed Gas Cooler	(HOLD 1) 2.2MW
V-T7113	Second Stage Discharge Scrubber	(HOLD 1)
V-T7114/24	Third Stage Suction Scrubber	(HOLD 1) (each)
K-T7113/23	Third Stage Compressor	(HOLD 1) (each) 3MW
E-T7114/24	Gas Injection Discharge Cooler	(HOLD 1) (each) 4.4MW




OSX
An EBX Group Company

FPSO OSX-2

DRAWING ASSEMBLY: N/A

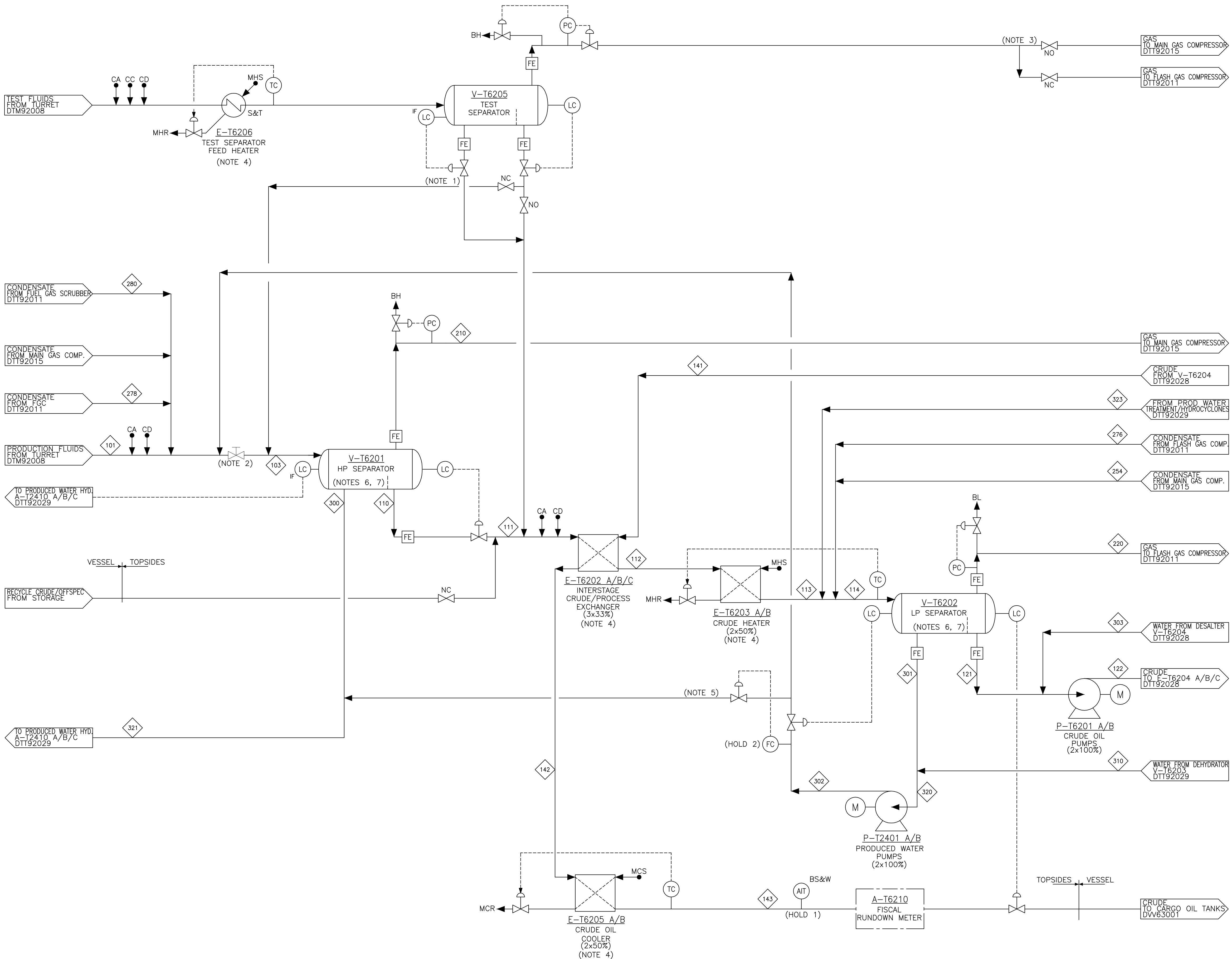
TOTAL WEIGHT: N/A



SINGLE BUOY MOORINGS INC.
MARLY - SWITZERLAND
ENGINEERING OFFICES MONACO P.O. BOX 199
Tel: +377 92 05 15 00 Website: www.sbmoffshore.com

© 2011 COPYRIGHT BY SBM OFFSHORE NV OR ITS AFFILIATES. THIS DOCUMENT AND ITS CONTENTS ARE THE CONFIDENTIAL PROPERTY OF SBM OFFSHORE NV OR ITS AFFILIATES AND AS SUCH THIS DOCUMENT, OR ANY PART THEREOF, MAY NOT BE MADE KNOWN, BE COPIED, OR BE REPRODUCED IN ANY MANNER WITHOUT THE EXPRESS PERMISSION OF SBM OFFSHORE NV OR ITS AFFILIATES.

Client Drawing Number	DE-OSX2-0092-PRO-SBM-023	Client Revision	0
Drawing Title	TOPSIDES MAIN GAS COMPRESSION PFD	EPM	S.MATHER
Format	A1	Date	
SBM Project Number	SO 18070	SBM Drawing Number	DTT92015
		SBM Revision	11



Status	Rev.	Description	Author	Checker	Discipline Engineer	Disc. Lead Engineer	Date
P	1	PRELIMINARY FOR INFORMATION	JEK	JEV	TUD	JEV	18/05/2011
I	1	INTERNAL DISCIPLINE CHECK	JEK	YAD	TUD	JEV	08/06/2011


NOTES

1. TEST HEATER AND SEPARATOR ROUTING TO ALLOW FOR USE OF TEST HEATER FOR START-UP
2. MIXING VALVE.
3. TEST SEPARATOR GAS MAY BE ROUTED TO MGC OR FGC DEPENDING ON OPERATING PRESSURE
4. HEAT EXCHANGERS PROVIDED WITH BYPASS.
5. LINE TO ROUTE THE PRODUCED WATER FROM LP SEPARATOR IF HP SEPARATOR WATER CAPACITY IS EXCEEDED.
6. VESSELS PROVIDED WITH INLET CYCLONES.
7. VESSEL DESIGN MAKES PROVISION FOR FUTURE RETROFIT OF A VESSEL INTERNAL ELECTROSTATIC COALESCER (VIEC).

HOLDS

1. ROUTING OF THE OFFSPEC CRUDE OIL TO BE DEFINED LATER
2. EXCESS WATER CONTROL ARRANGEMENT TO BE CONFIRMED
3. NUMBER OF HEAT EXCHANGERS.
4. SEPARATOR SIZES.


Tag Number	Description	Duty/Capacity/Size
V-T6201	HP Separator	D: 4,200mm x L(T/T): 15,000 mm (HOLD)
V-T6202	LP Separator	D: 4,300mm x L(T/T): 15,500 mm (HOLD)
V-T6205	Test Separator	D: 2,300mm x L(T/T): 8,400 mm (HOLD)
E-T6202A/B/C	Interstage Crude/Process Exchanger	21.0 MW (Total) (HOLD)
E-T6203A/B	Crude Heater	26.9 MW (Total) (HOLD)
E-T6205A/B	Crude Oil Cooler	10.9 MW (Total) (HOLD)
E-T6206	Test Separator Feed Heater	9.6 MW (HOLD)
P-T6201A/B	Crude Oil Pump	902 m ³ /h (HOLD)
P-T2401A/B	Produced Water Pump	605 m ³ /h (HOLD)



OSX
An EBX Group Company

FPSO OSX-2

DRAWING ASSEMBLY: N/A TOTAL WEIGHT: N/A



SINGLE BUOY MOORINGS INC.
MARLY - SWITZERLAND
ENGINEERING OFFICES MONACO P.O. BOX 199
Tel: +377 92 05 15 00 Website: www.sbmoffshore.com

© 2011 COPYRIGHT BY SBM OFFSHORE NV OR ITS AFFILIATES. THIS DOCUMENT AND ITS CONTENTS ARE THE CONFIDENTIAL PROPERTY OF SBM OFFSHORE NV OR ITS AFFILIATES AND AS SUCH THIS DOCUMENT, OR ANY PART THEREOF, MAY NOT BE MADE KNOWN, BE COPIED, OR BE MULTIPLIED OR IN ANY OTHER WAY USED WITHOUT THE EXPRESS PERMISSION OF SBM OFFSHORE NV OR ITS AFFILIATES.

Client Drawing Number		DE-OSX2-0092-PRO-SBM-035		Client Revision		0	
Drawing Title		TOPSIDES OIL PROCESSING SYSTEM (1) PFD		EPM		SMATHER	
Format		A1		Date			
SBM Project Number		SO 18070		SBM Drawing Number		DTT92027	
SBM Revision				SBM Revision		11	

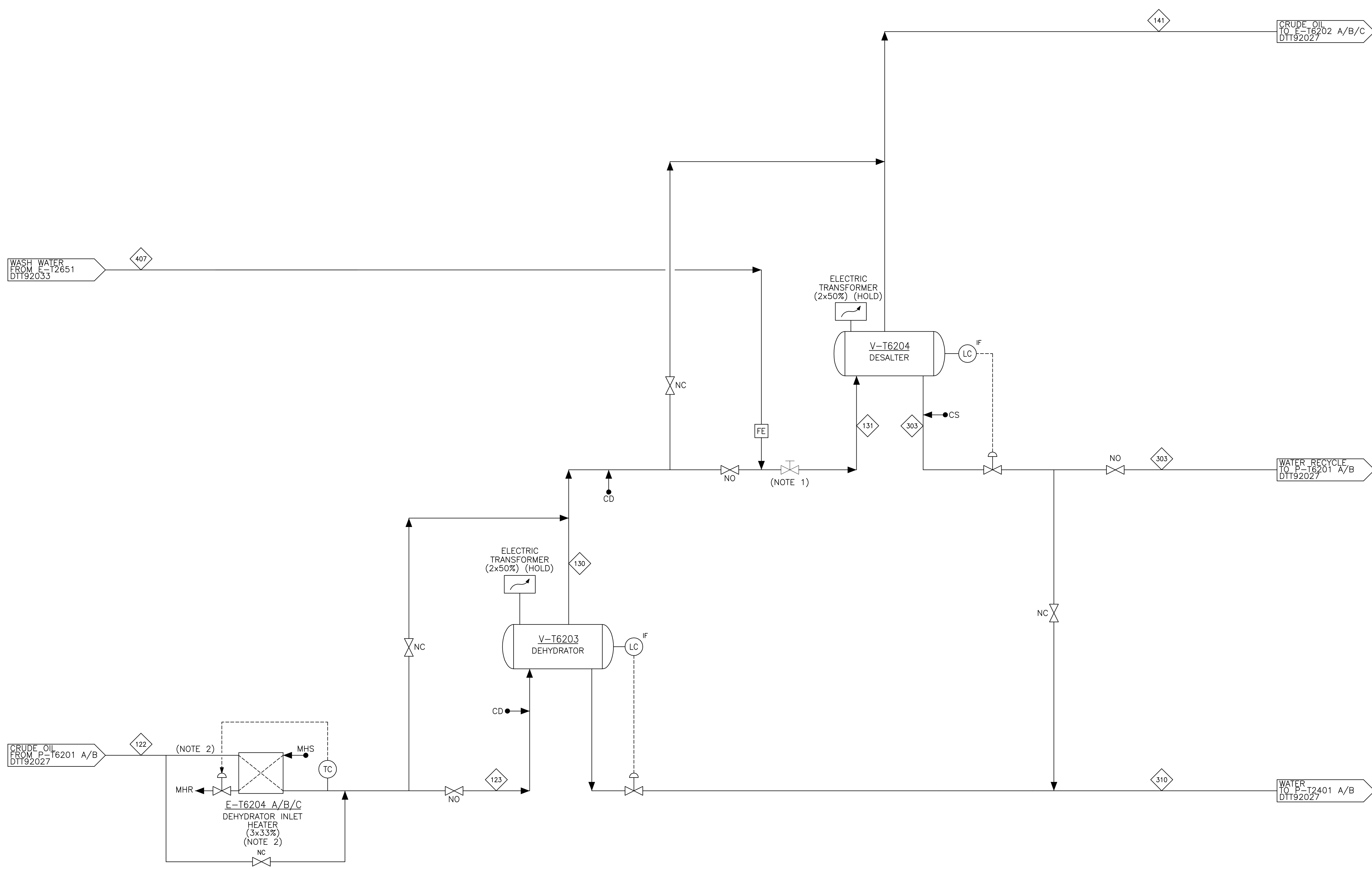
Status	Rev.	Description	Author	Checker	Discipline Engineer	Disc. Lead Engineer	Date
P	1	PRELIMINARY FOR INFORMATION	JEK	JEV	TUD	JEV	18/05/2011
I	1	INTERNAL DISCIPLINE CHECK	JEK	YAD	TUD	JEV	08/06/2011

NOTES


- MIXING VALVE.
- HEAT EXCHANGER TO BE BY PASSED IN LIGHT OIL CASES.

HOLDS

- SEPARATOR SIZES.




Tag Number	Description	Duty/Capacity/Size
V-T6203	Dehydrator	D: 4,300mm x L(T/T): 15,000 mm (HOLD)
V-T6204	Desalter	D: 4,750 mm x L(T/T): 23,500 mm (HOLD)
E-T6204A/B/C	Dehydrator Inlet Heater	17.8 MW (Total) (HOLD)



OSX
An EBX Group Company

FPSO OSX-2

DRAWING ASSEMBLY: N/A TOTAL WEIGHT: N/A



SINGLE BUOY MOORINGS INC.
MARLY - SWITZERLAND
ENGINEERING OFFICES MONACO P.O. BOX 199
Tel: +377 92 05 15 00 Website: www.sbmoffshore.com

© 2011 COPYRIGHT by SBM Offshore NV or its affiliates. This document and its contents are the confidential property of SBM Offshore NV or its affiliates and as such this document, or any part thereof, may not be made known, be copied, or be multiplied or in any other way used without the express permission of SBM Offshore NV or its affiliates.

Client Drawing Number DE-OSX2-0092-PRO-SBM-036	Client Revision 0
Drawing Title TOPSIDES OIL PROCESSING SYSTEM (2) PFD	E.P.M. S.MATHER
Format A1	Date
SBM Project Number SO 18070	SBM Drawing Number DTT92028
SBM Revision 11	

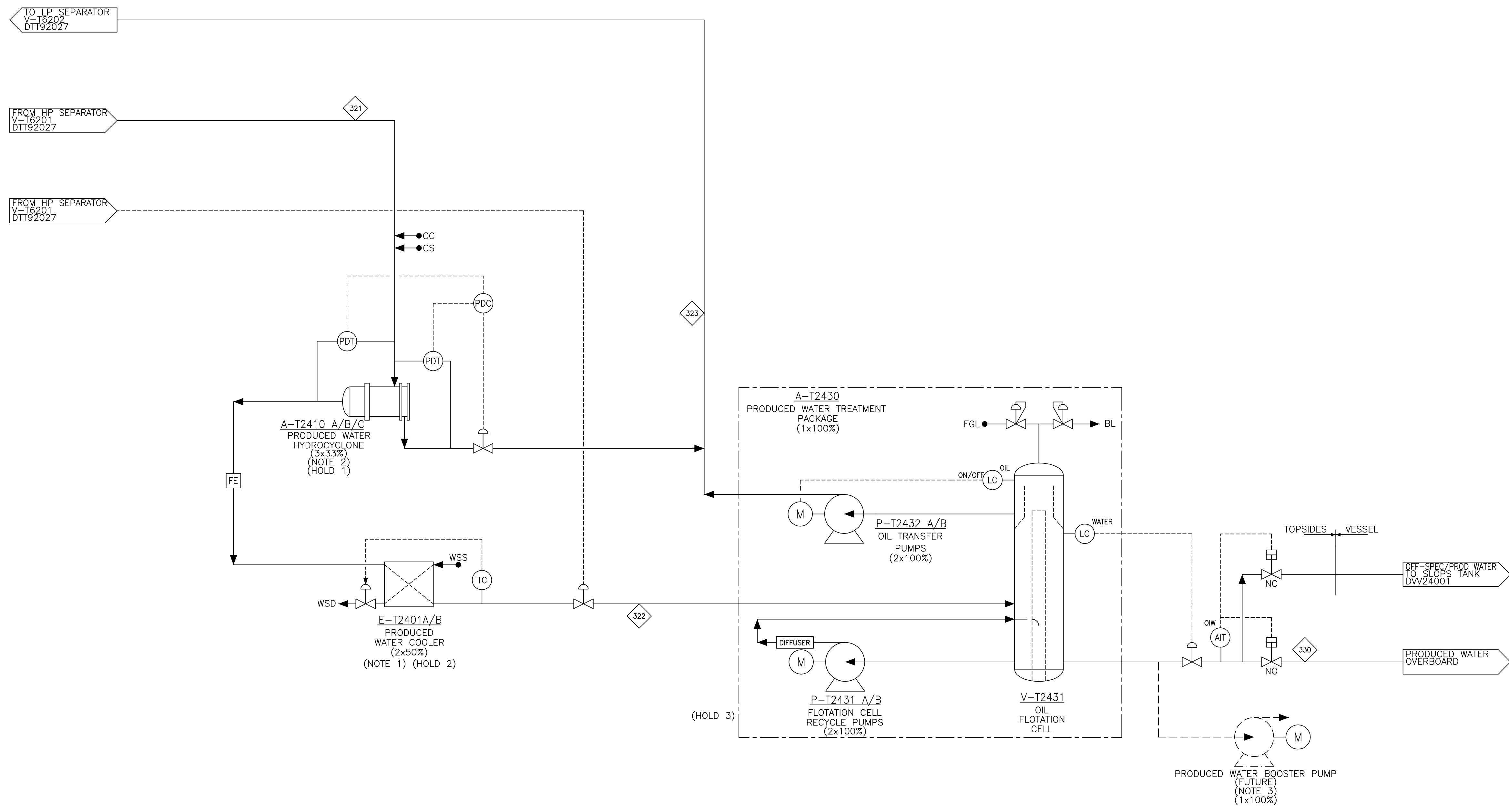
Status	Rev.	Description	Author	Checker	Discipline Engineer	Disc. Lead Engineer	Date
P	1	PRELIMINARY FOR INFORMATION	JEK	JEV	TUD	JEV	18/05/2011
I	1	INTERNAL DISCIPLINE CHECK	JEK	YAD	TUD	JEV	14/06/2011

NOTES

- HEAT EXCHANGERS PROVIDED WITH BYPASS.
- HYDROCYCLONES ARE SPLIT HEAD DESIGN FOR FLEXIBILITY IN OPERATION.
- SPACE TO BE RESERVED FOR CROSSOVER FROM PRODUCED WATER TO WATER INJECTION PUMPS.

HOLDS

- TIE-IN AND SPACE ALLOCATION FOR FUTURE (4TH) HYDROCYCLONE.
- PRODUCED WATER COOLER COULD BE SPLIT INTO TWO HEAT EXCHANGERS, ONE UPSTREAM AND ONE DOWNSTREAM THE FLOTATION UNIT. PENDING ON THE CONFIRMATION OF THE OPTIMUM OPERATING TEMPERATURE OF THE PRODUCED WATER TREATMENT PACKAGE.
- SERVICE UTILITIES TO FLOTATION CELL.




Tag Number	Description	Duty/Capacity/Size
A-T2410A/B/C	Produced Water Hydrocyclone	140,000 bpd (Total)
E-T2401A/B	Produced Water Cooler	29.5 MW (HOLD)
A-T2430	Produced Water Treatment Package	140,000 bpd

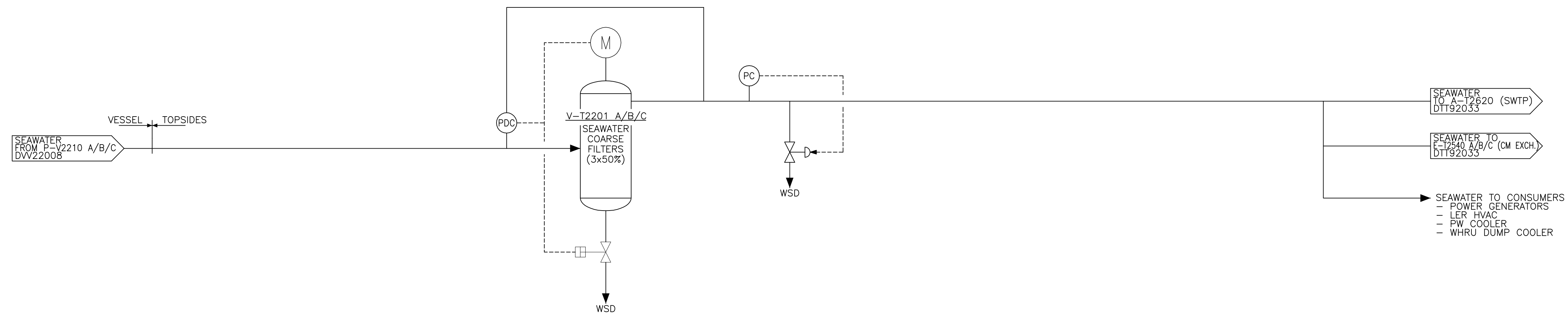


FPSO OSX-2

An EBX Group Company

DRAWING ASSEMBLY: N/A		TOTAL WEIGHT: N/A	
		SINGLE BUOY MOORINGS INC. MARLY - SWITZERLAND ENGINEERING OFFICES MONACO P.O. BOX 199 Tel: +377 92 05 15 00 Website: www.sbmoffshore.com	
Client Drawing Number		Client Revision	
DE-OSX2-0092-PRO-SBM-037		0	
Drawing Title		E.P.M	
TOPSIDES PRODUCED WATER SYSTEM PFD		S.MATHER	
Format		Date	
A1		SBM Revision	
SO 18070		SBM Drawing Number	
DTT92029		11	

SEAWATER SYSTEM



Status	Rev.	Description	Author	Checker	Discipline Engineer	Disc. Lead Engineer	Date
P	1	PRELIMINARY FOR INFORMATION	JEK	JEV	YAD	JEV	17/05/2011
I	1	INTERNAL DISCIPLINE CHECK	JEK	JEV	YAD	JEV	14/06/2011

NOTES

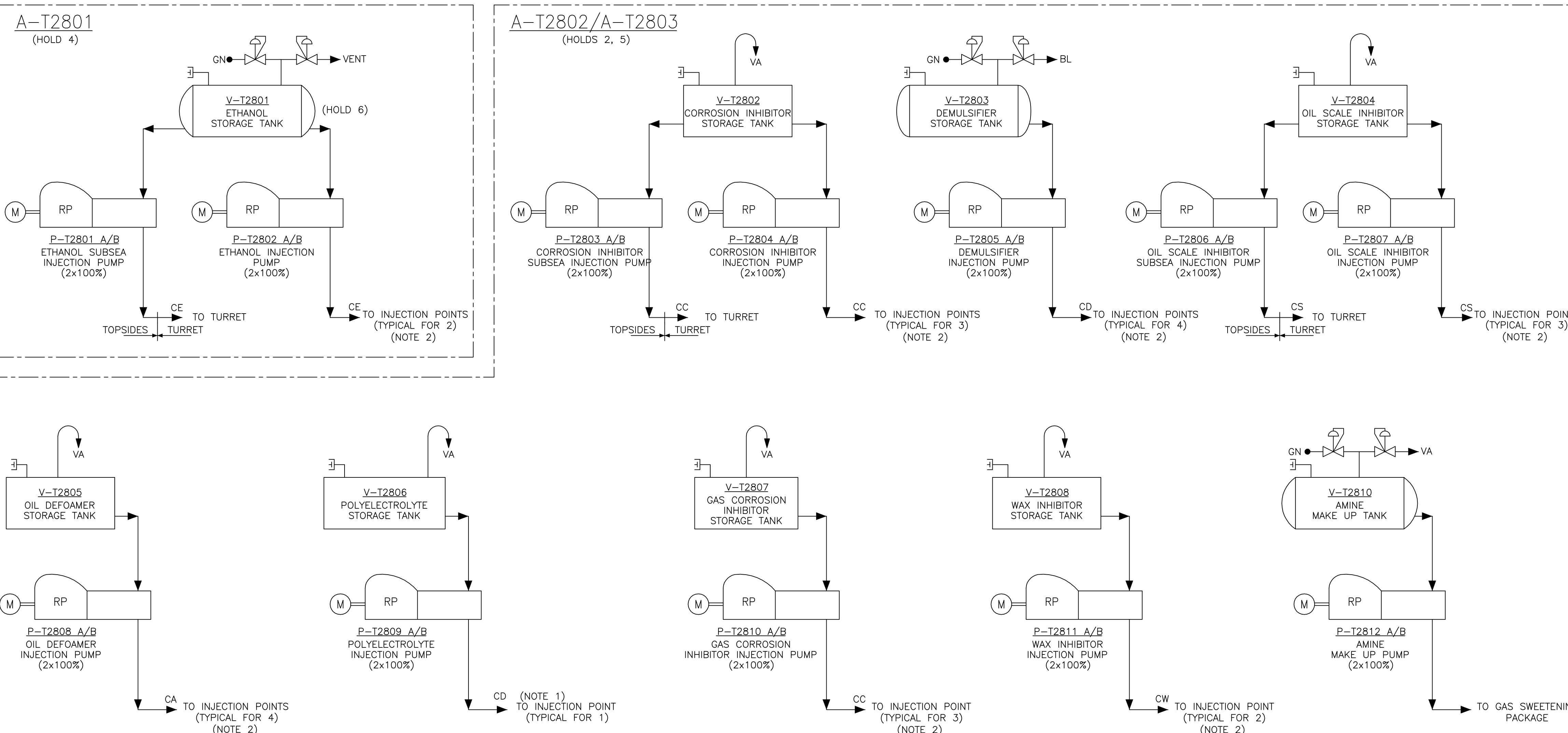
1. POLYELECTROLYTE USED AS INVERTED EMULSION INHIBITOR.
2. MULTI-HEAD PUMPS.

HOLDS


1. NUMBER OF INJECTION POINTS.
2. SKID/PACKAGE TAGS AND BATTERY LIMITS.
3. AMINE FLUID CODE.
4. ETHANOL TRANSFER EQUIPMENT.
5. FLOW MEASUREMENT PHILOSOPHY.
6. TYPE OF ETHANOL TANK (CYLINDRICAL OR SQUARE).
7. EQUIPMENT DESIGN CAPACITIES.

PRODUCTION CHEMICAL INJECTION SYSTEM

(HOLD 2)




Tag Number	Description	Duty/Capacity/Size
V-T2201A/B/C	Seawater Coarse Filters (3x50%)	5400m3/h TOTAL
A-T2801	Ethanol injection Package	n/a
V-T2801	Ethanol storage tank	20m3
P-T2801A/B	Ethanol Subsea Injection Pump (2 x 100%)	5m3/h
P-T2802A/B	Ethanol Injection Pump (2 x 100%)	500/h
A-T2802	Chemical injection package 2	n/a
A-T2803	Chemical injection package 3	n/a
V-T2802	Corrosion Inhibitor Storage Tank	9m3
P-T2803A/B	Corrosion Inhibitor Subsea Injection Pump (2 x 100%)	50/h
P-T2804A/B	Corrosion Inhibitor Injection Pump (2 x 100%)	50/h
V-T2803	Demulsifier Storage Tank	12m3
P-T2805A/B	Demulsifier Injection Pump (2 x 100%)	66/h
V-T2804	Oil Scale Inhibitor Tank	6m3
P-T2806A/B	Oil Scale Inhibitor Subsea Injection Pump (2 x 100%)	33/h
P-T2807A/B	Oil Scale Inhibitor Injection Pump (2 x 100%)	35/h
V-T2805	Oil Defoamer Storage Tank	7m3
P-T2808A/B	Oil Defoamer Injection Pump (2x 100%)	40/h
V-T2806	Polyelectrolyte Storage Tank	6m3
P-T2809A/B	Polyelectrolyte Injection Pump (2 x 100%)	33/h
V-T2807	Gas Corrosion Inhibitor Storage Tank	1m3
P-T2810A/B	Gas Corrosion Inhibitor Injection Pump (2 x 100%)	2/h
V-T2808	Wax Inhibitor Storage Tank	4m3
P-T2811A/B	Wax Inhibitor Injection Pump	20/h
V-T2810	Amine Make Up Tank	3m3
P-T2812A/B	Amine Make Up Pump (2 x 100%)	10/h



FPSO OSX-2

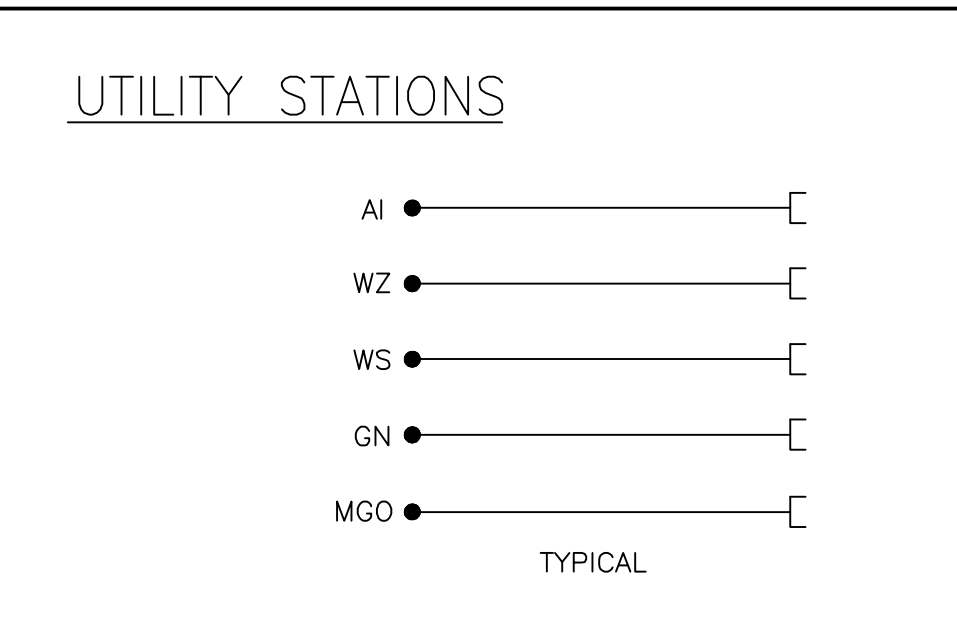
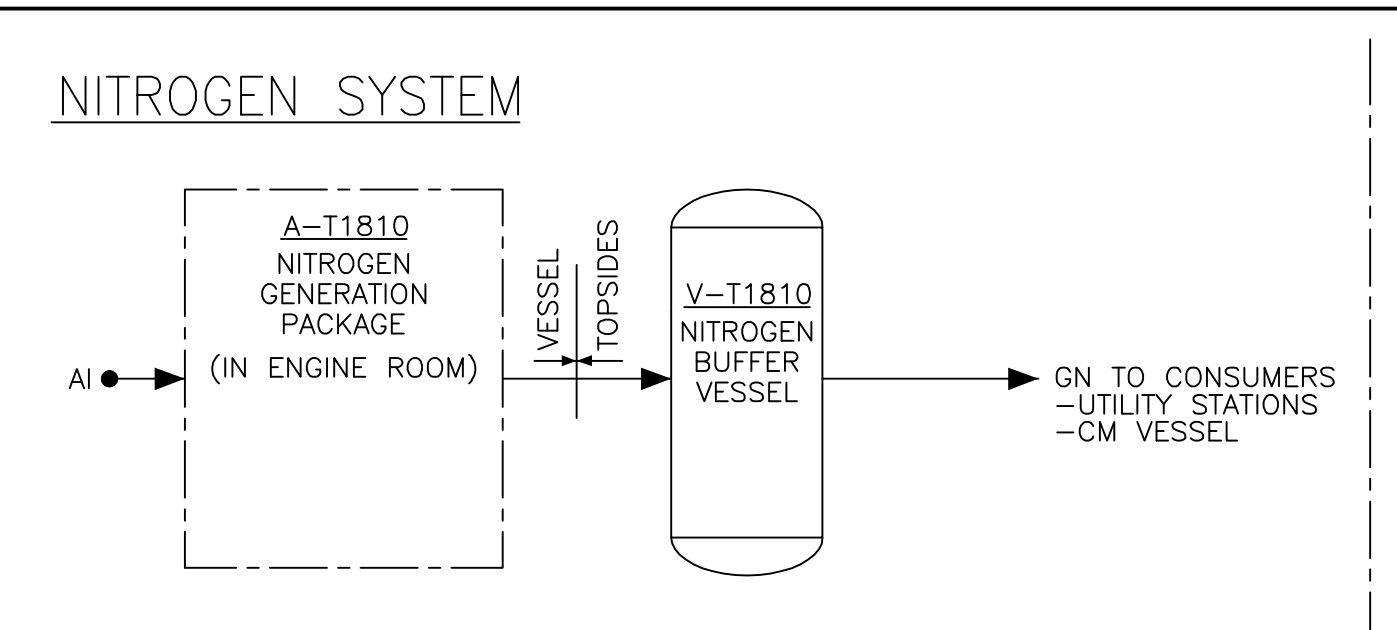
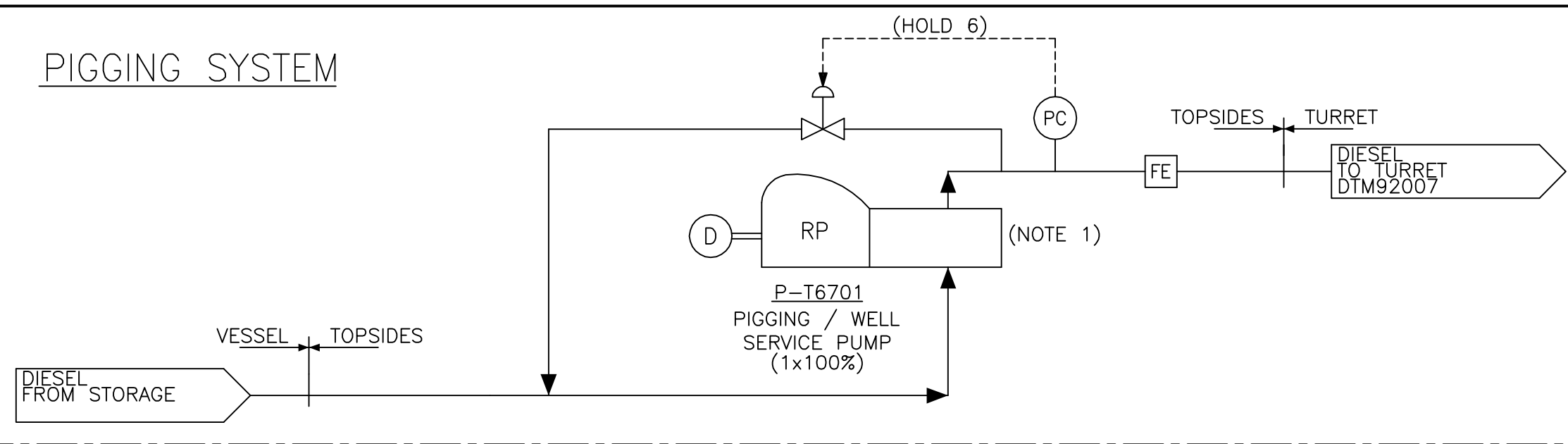
DRAWING ASSEMBLY: N/A TOTAL WEIGHT: N/A



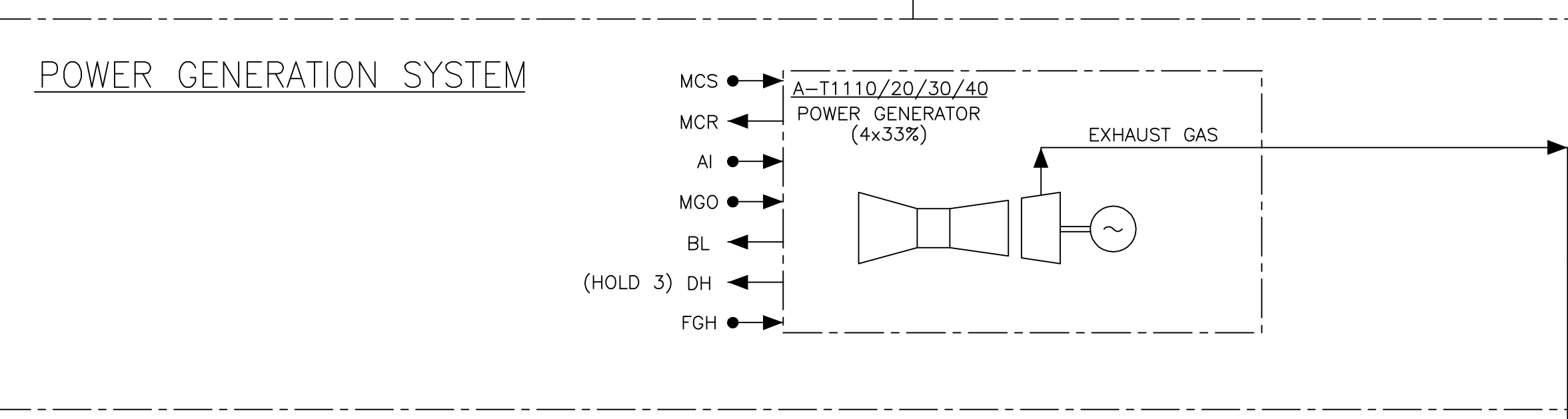
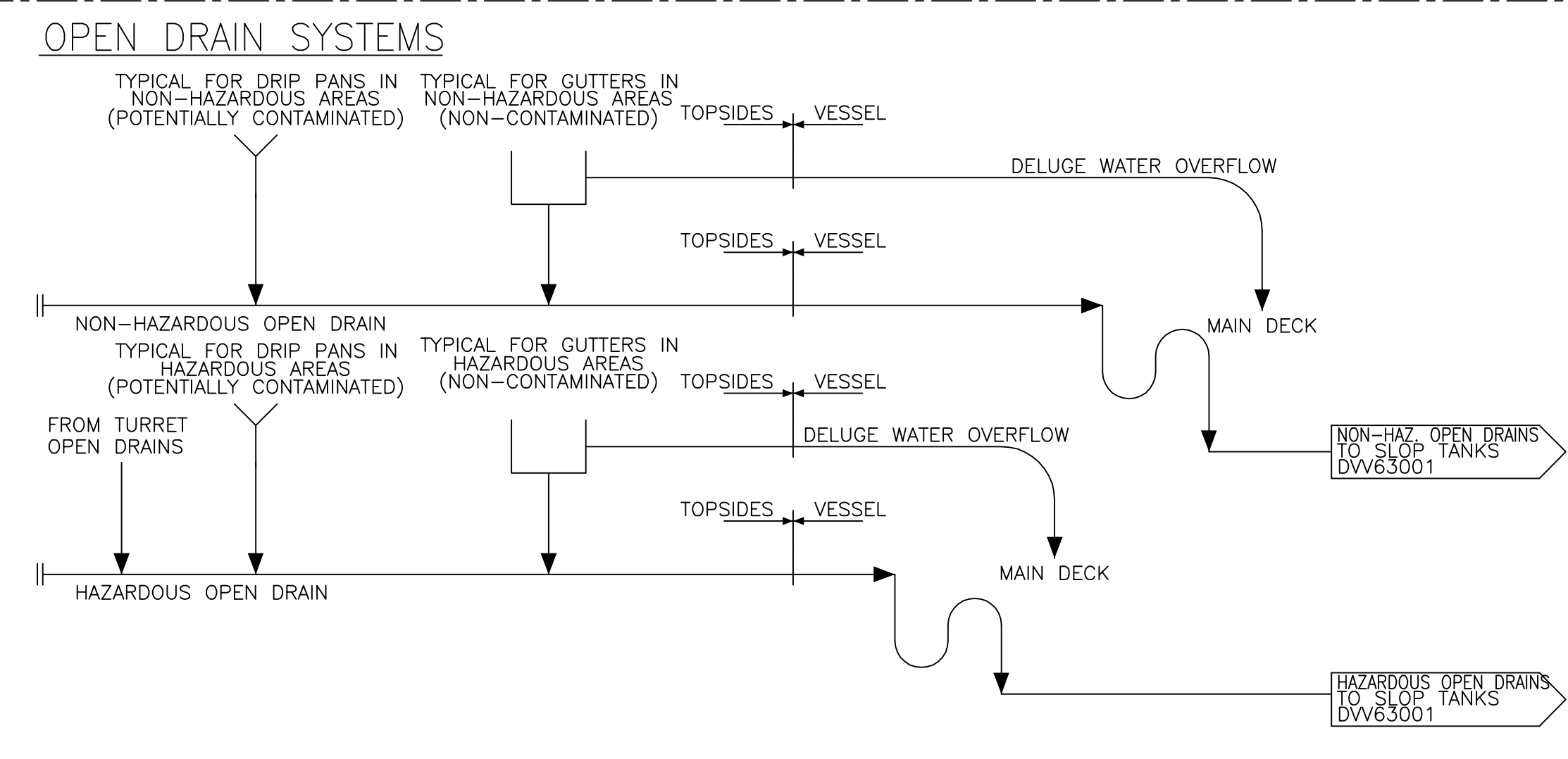
SINGLE BUOY MOORINGS INC.
MARLY - SWITZERLAND
ENGINEERING OFFICES MONACO P.O. BOX 199
Tel: +377 92 05 15 00 Website: www.sbmoffshore.com

© 2011 COPYRIGHT by SBM Offshore NV or its affiliates. This document and its contents are the confidential property of SBM Offshore NV or its affiliates and as such this document, or any part thereof, may not be made known, be copied, or be multiplied or in any other way used without the express permission of SBM Offshore NV or its affiliates.

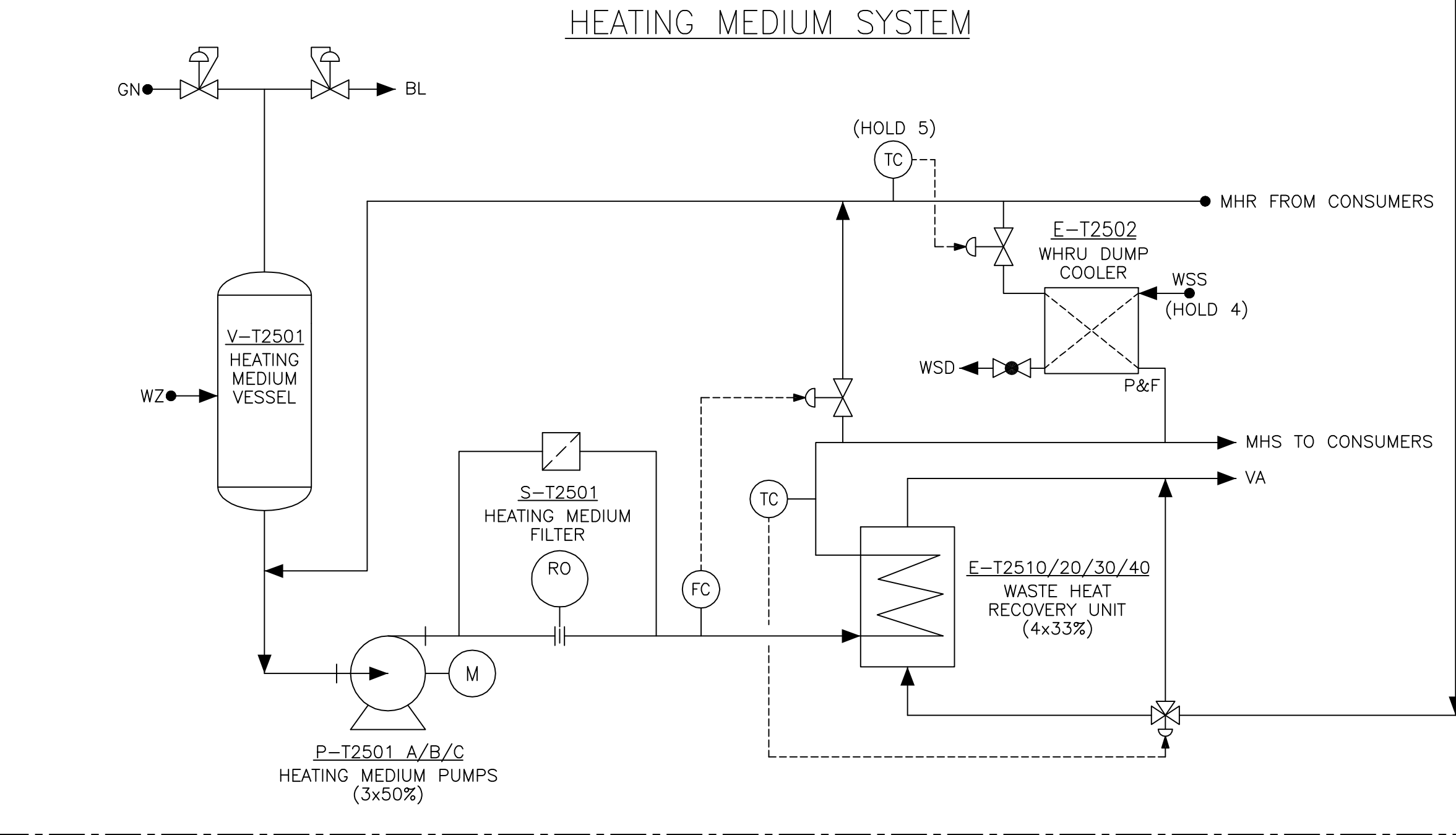
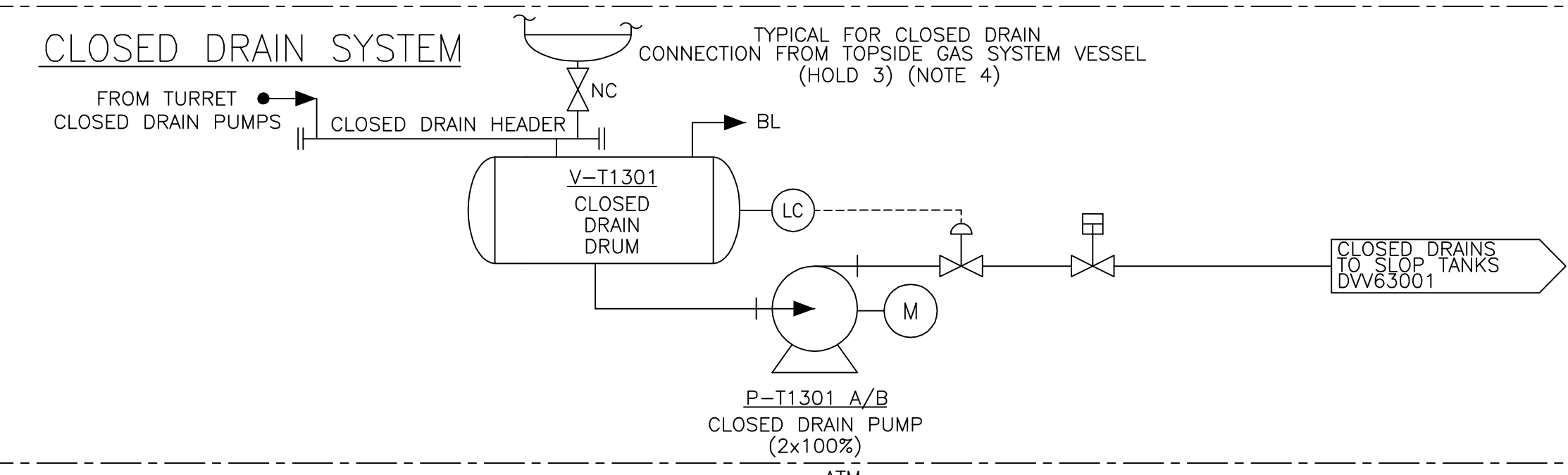
Client Drawing Number	DE-OSX2-0092-PRO-SBM-039	Client Revision	0
Drawing Title	TOPSIDES UTILITIES (1) PFD	EPM	S.MATHER
Format	A1	Date	
SBM Project Number	SO 18070	SBM Drawing Number	DTT92031
		SBM Revision	11



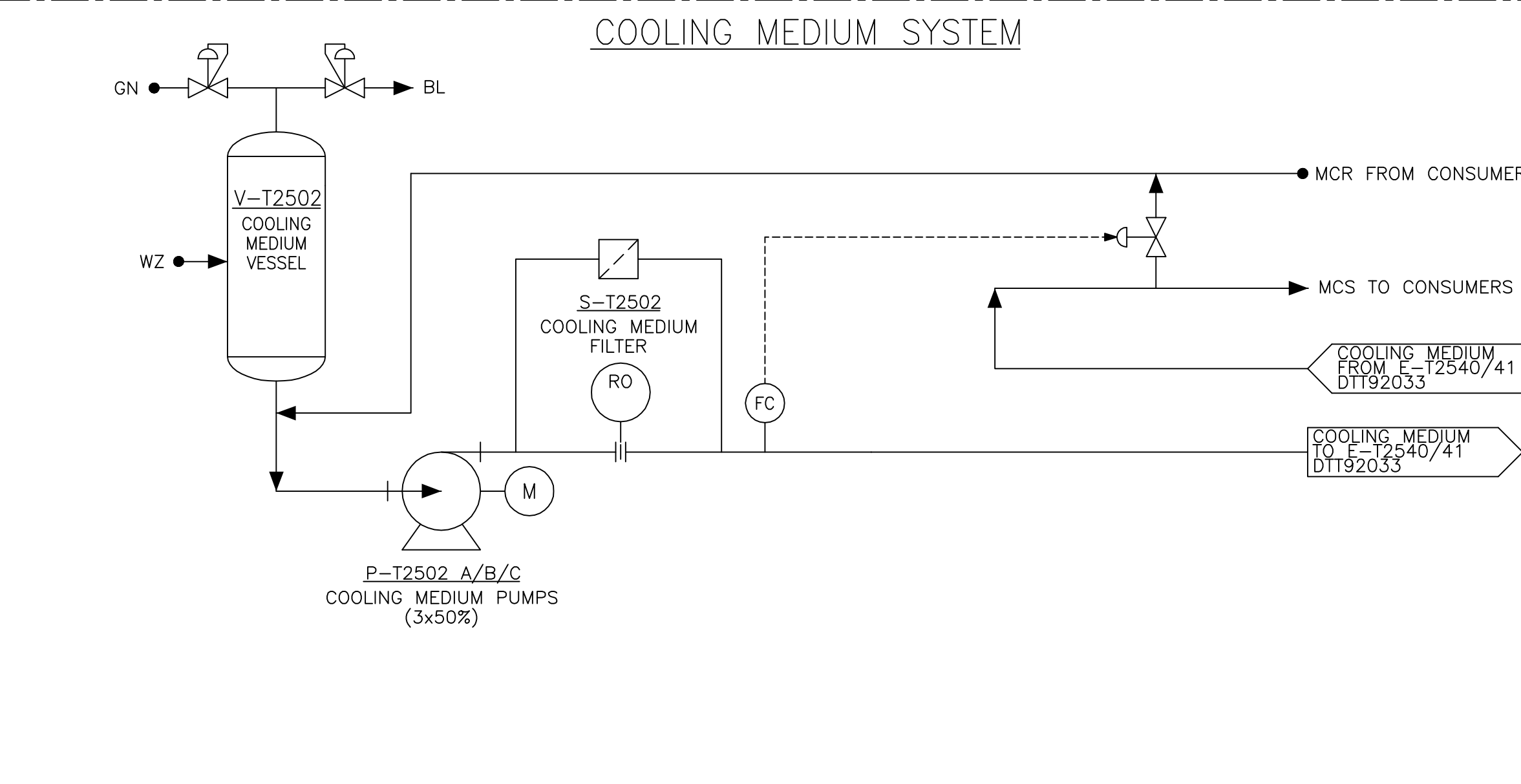
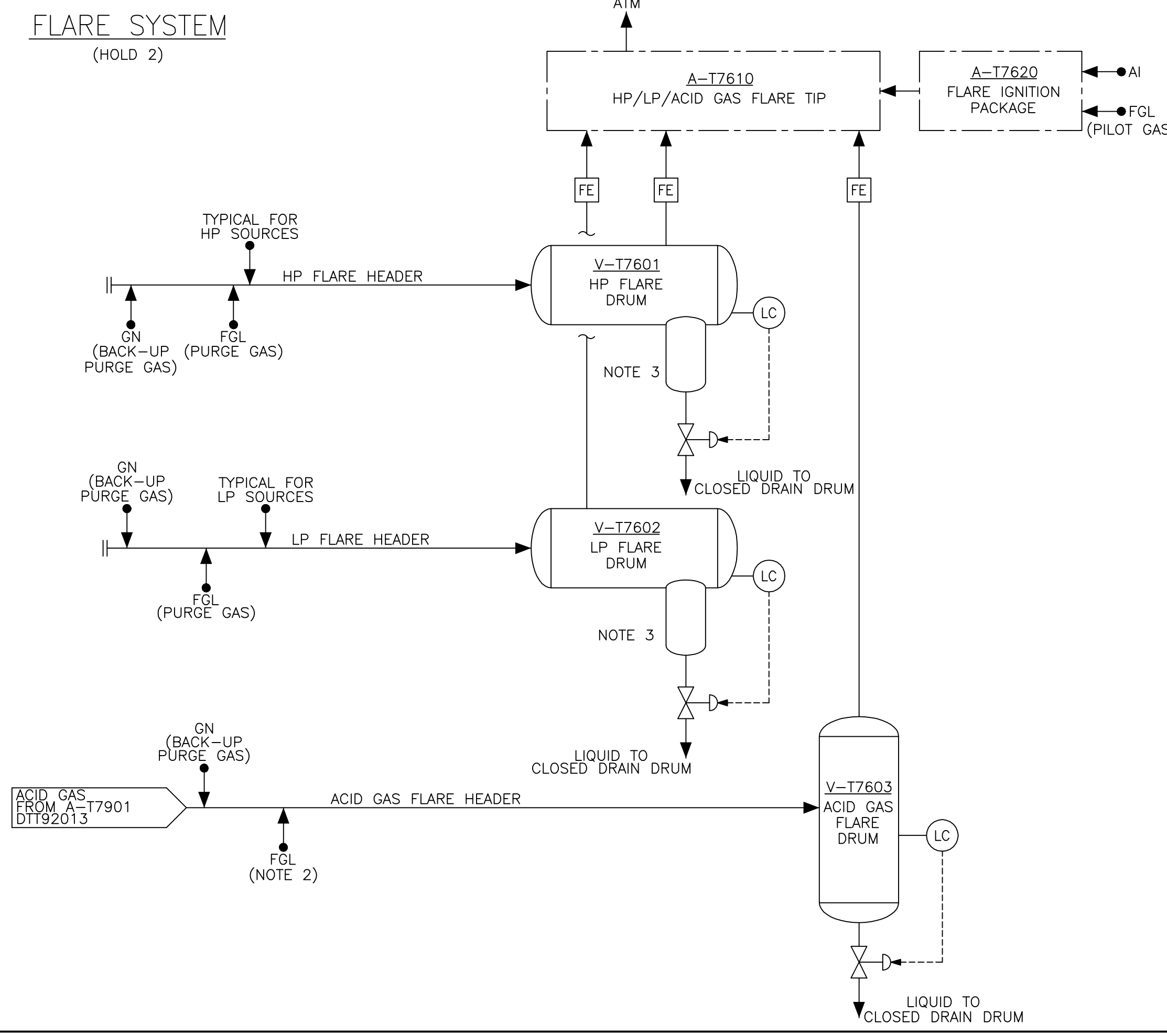
Status	Rev.	Description	Author	Checker	Discipline Engineer	Disc. Lead Engineer	Date
P	1	PRELIMINARY FOR INFORMATION	JEK	JEV	YAD	JEV	18/05/2011
I	1	INTERNAL DISCIPLINE CHECK	JEK	JEV	YAD	JEV	14/06/2011



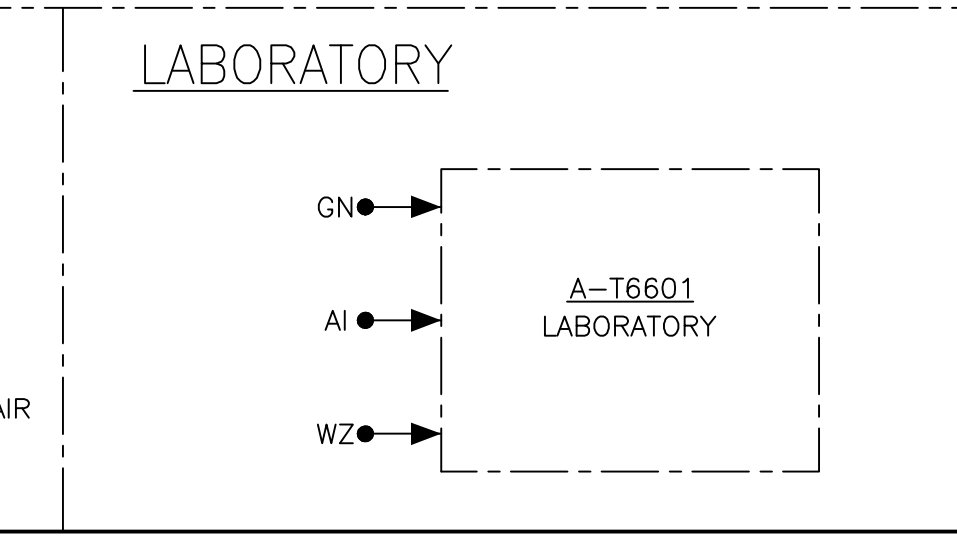
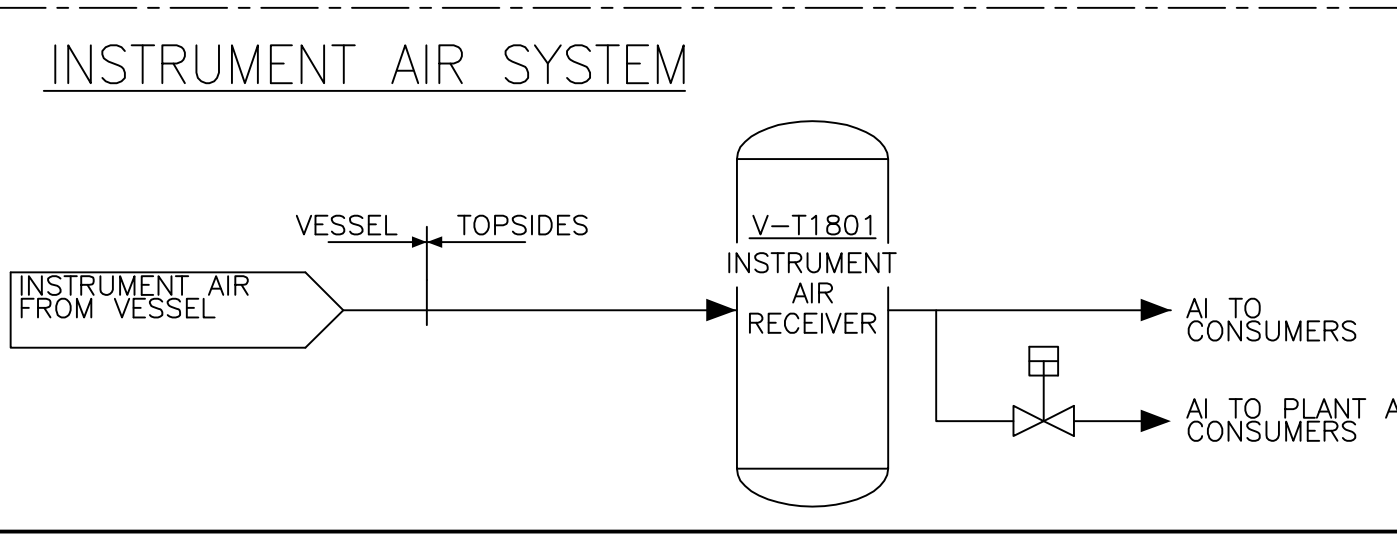
- ### NOTES
- PUMP SIZED FOR FLUSHING THE SUBSEA FLOW LINES FOR 2 SATELLITE WELLS AT THE SAME TIME.
 - FUEL GAS CAN BE ADDED TO ACID GAS TO ENSURE HIGH ENOUGH CALORIFIC VALUE WHEN FLARING OF ACID GAS DESIRED.
 - EXTERNAL ELECTRICAL HEATING REQUIRED ON HP & LP FLARE DRUM BOOTS FOR WAX PREVENTION.
 - TOPSIDE CLOSED DRAINS USED FOR VESSEL MAINTENANCE ONLY ON SOUR GAS CONDENSATE SYSTEMS. OPEN HAZARDOUS DRAINS TO BE USED FOR TOPSIDE OIL SEPARATION SYSTEM.



- ### HOLDS
- ELECTRIC OR DIESEL DRIVE FOR PIGGING/WELL SERVICE PUMP.
 - ROUTING OF FLARE DRUM LIQUIDS.
 - CLOSED DRAIN PHILOSOPHY.
 - REQUIREMENT TO USE COOLING MEDIUM FOR DUMP COOLER.
 - WHRU DUMP COOLER CONTROL PHILOSOPHY.
 - PIGGING PUMP FLOW CONTROL PHILOSOPHY.
 - EQUIPMENT DESIGN CAPACITIES.



Tag Number	Description	Duty/Capacity/Size
P-T6701	Pigging / Well Service Pump	50m3/hr
V-T1301	Closed Drain Drum	n/a
P-T1301A/B	Closed Drain Pump (2 x 100%)	HOLD 7
A-T7610	HP/LP/Acid Flare Tip	HOLD 7
A-T7620	Flare Tip Ignition Package	HOLD 7
V-T7601	HP Flare Drum	HOLD 7
V-T7602	LP Flare Drum	HOLD 7
V-T7603	Acid Gas Flare Drum	HOLD 7
V-T1801	Instrument Air Receiver	90m3
A-T1810	Nitrogen Generation Package	150Sm3/h
V-T1810	Nitrogen Buffer Vessel	6m3
A-T1110/20/30/40	Gas Turbine Power Generation Package	23.5MWeach
V-T2501	Heating Medium Vessel	25m3
P-T2501A/B/C	Heating Medium Pump (3 x 50%)	1800m3/h TOTAL
S-T2501	Heating Medium Filter	360m3/h
E-T2502	Heating Medium Dump Cooler	2400kW
V-T2502	Cooling Medium Vessel	10m3
P-T2502A/B/C	Cooling Medium Pump (3 x 50%)	2100m3/h TOTAL
S-T2502	Cooling Medium Filter	420m3/h
E-T2510/20/30/40	Waste Heat Recovery Unit (4 x 33%)	16.5MWeach





FPSO OSX-2

DRAWING ASSEMBLY: N/A TOTAL WEIGHT: N/A



SINGLE BUOY MOORINGS INC.
MARLY - SWITZERLAND
ENGINEERING OFFICES MONACO P.O. BOX 199
Tel: +377 92 05 15 00 Website: www.sbmoffshore.com

© 2011 COPYRIGHT by SBM Offshore NV or its affiliates. This document and its contents are the confidential property of SBM Offshore NV or its affiliates and as such this document, or any part thereof, may not be made known, be copied, or be multiplied in any other way used without the express permission of SBM Offshore NV or its affiliates.

Client Drawing Number	DE-OSX2-0092-PRO-SBM-040	Client Revision	0
Drawing Title	TOPSIDES UTILITIES (2) PFD	EPW	S.MATHER
Format	A1	Date	
SBM Project Number	SO 18070	SBM Drawing Number	DTT92032
		SBM Revision	11