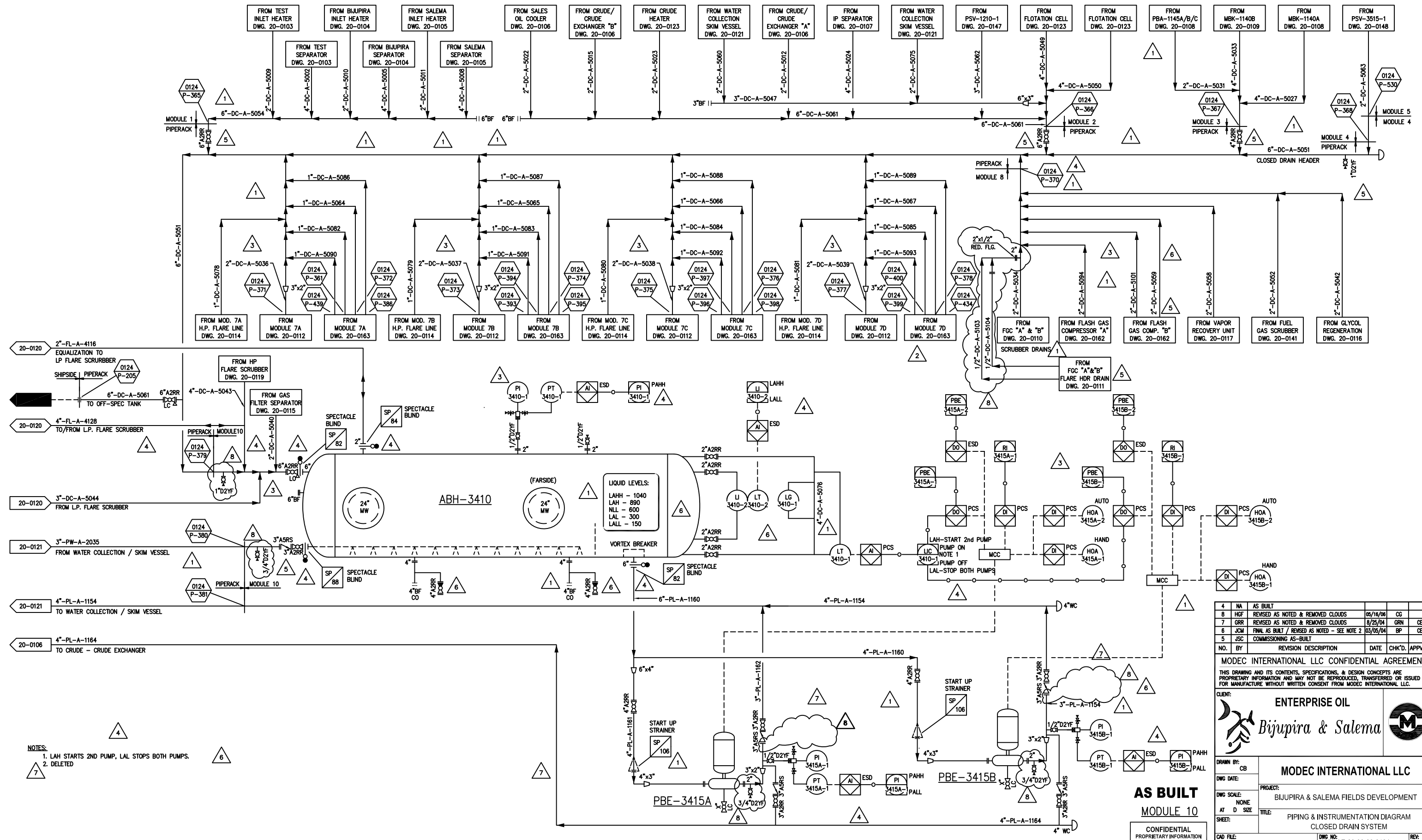


ABH-3410
 CLOSED DRAIN SUMP TANK
 SIZE: 1220 mm (48") OD x 3050 mm (10') S/S
 DESIGN: 676 kPag (98 psig) @ -45°C/66°C (-49°F/150°F)
 OPERATING: 28 kPag BARG (4 psig) @ -35°C/38°C (-31°F/100°F)

PBE-3415A/B
 CLOSED DRAIN SUMP PUMPS
 CAPACITY: 28.4 m³/h (125 gpm) GPM @ ΔP = 1034 kPag (150 psig)
 DRIVER: 30 kW (40 hp)



NOTES:
 1. LAH STARTS 2ND PUMP, LAL STOPS BOTH PUMPS.
 2. DELETED

NO.	BY	REVISION DESCRIPTION	DATE	CHK'D.	APP'VD.
4	NA	AS BUILT			
8	HGF	REVISED AS NOTED & REMOVED CLOUDS	05/16/06	CC	
7	GRR	REVISED AS NOTED & REMOVED CLOUDS	8/25/04	GRM	CEC
6	JCM	FINAL AS BUILT / REVISED AS NOTED - SEE NOTE 2	03/05/04	BP	CEC
5	JSC	COMMISSIONING AS-BUILT			

MODEC INTERNATIONAL LLC DESIGN AGREEMENT
 THIS DRAWING AND ITS CONTENTS, SPECIFICATIONS, & DESIGN CONCEPTS ARE PROPRIETARY INFORMATION AND MAY NOT BE REPRODUCED, TRANSFERRED OR ISSUED FOR MANUFACTURE WITHOUT WRITTEN CONSENT FROM MODEC INTERNATIONAL LLC.

CLIENT: **ENTERPRISE OIL**
Bijupira & Salema

DRAWN BY: CB		PROJECT: BIJUPIRA & SALEMA FIELDS DEVELOPMENT	
DWG DATE:		DWG SCALE: NONE	
DWG NO: 01-20-0124		DWG TITLE: PIPING & INSTRUMENTATION DIAGRAM	
DWG NO: 1058-AE-20-90-20-0124		DWG TITLE: CLOSED DRAIN SYSTEM	
DWG NO: 01-20-0124		DWG NO: 1058-AE-20-90-20-0124	
DWG NO: 01-20-0124		DWG NO: 1058-AE-20-90-20-0124	

AS BUILT
 MODULE 10
 CONFIDENTIAL
 PROPRIETARY INFORMATION