

Rev	Date	By	DESCRIPTION	PROP.	ABS	USCG

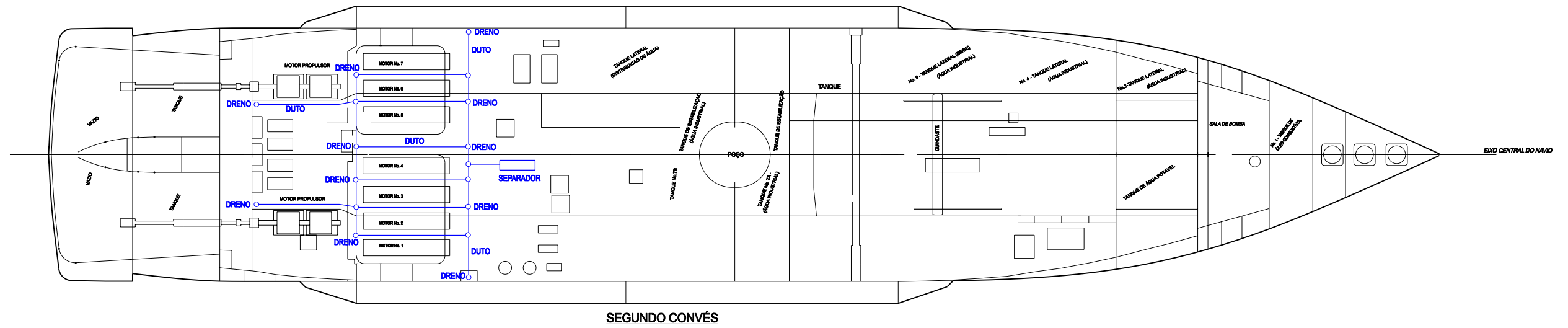
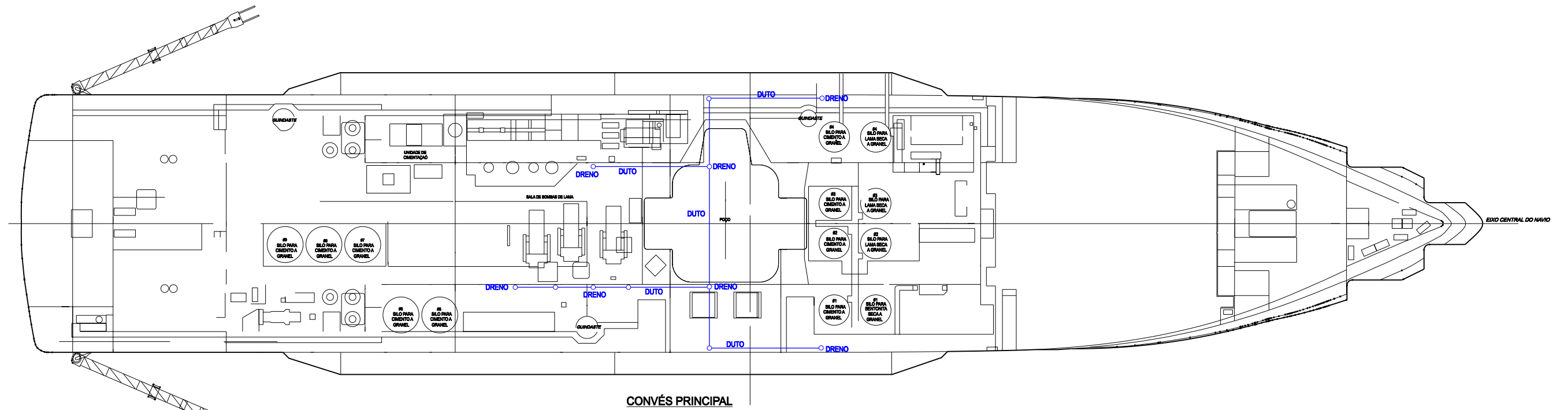
REVISIONS

  
**FRIEDE & GOLDMAN, LTD.**  
NAVAL ARCHITECTS AND MARINE ENGINEERS  
NEW ORLEANS, LOUISIANA

  
**DIAMOND OF SHORES**  
 P O BOX 4558  
 HOUSTON, TEXAS 77210

OCEAN CLIPPER  
ARRANJO GERAL  
FUNDO INTERNO

ENG: F&G	CHKD:	DWG No.:	150-GA-002 port
DRAWN: MLG	APRVD:	ACAD NAME:	150ga002port.DWG
SCALE: 1/200	DATE: 4/19/96	SHT 1 of 1	REV. # 0

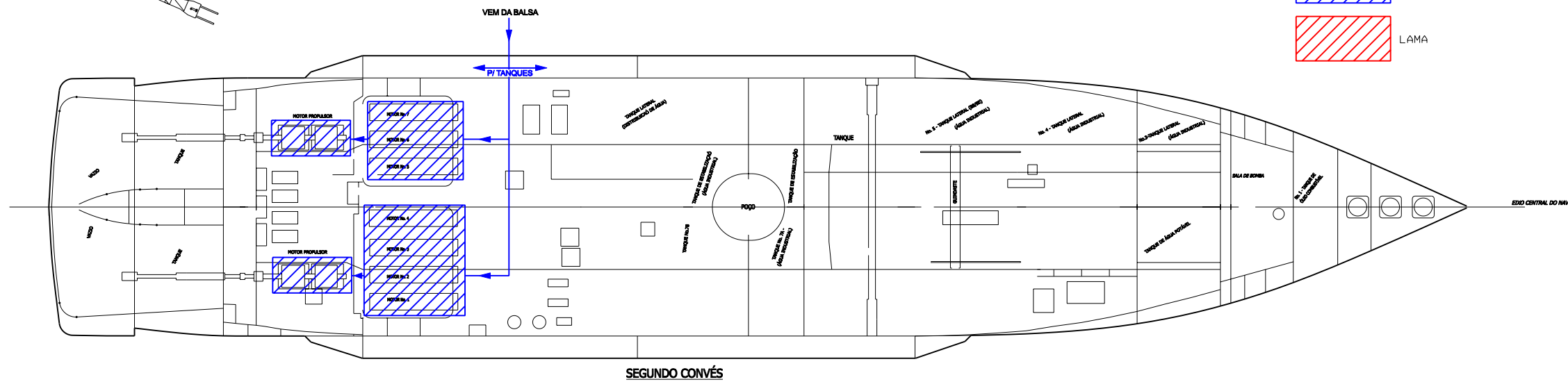
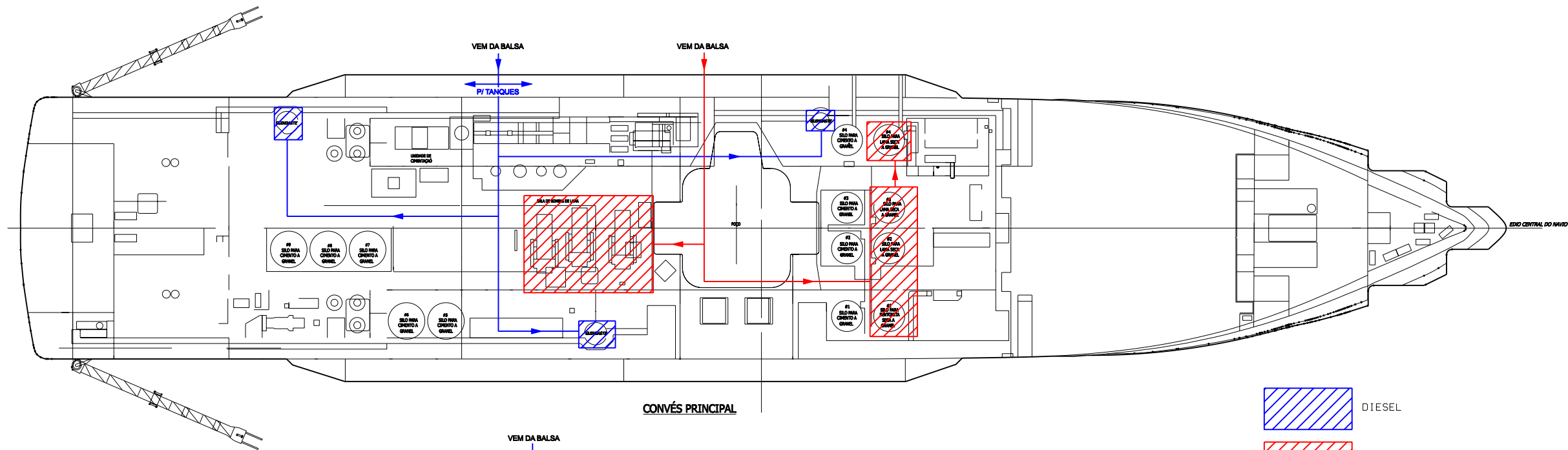


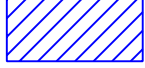

**DRENAGEM**

**UNIDADE MARÍTIMA DE PERFURAÇÃO NS-21  
CROQUI DO SISTEMA DE DRENAGEM**

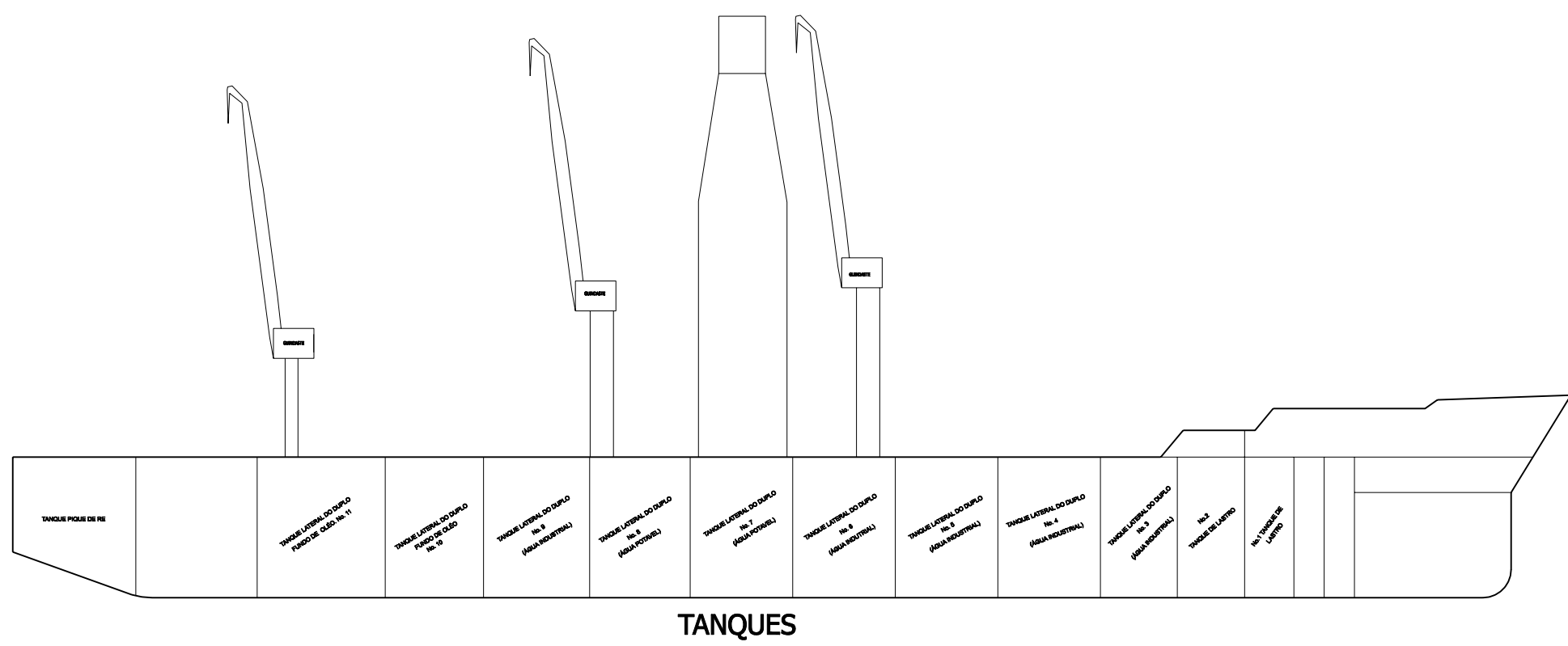
Revisão 0

Fev/2005



 DIESEL  
 LAMA

**FLUIDO DE PERFURAÇÃO E SISTEMA DE ÓLEO DIESEL**

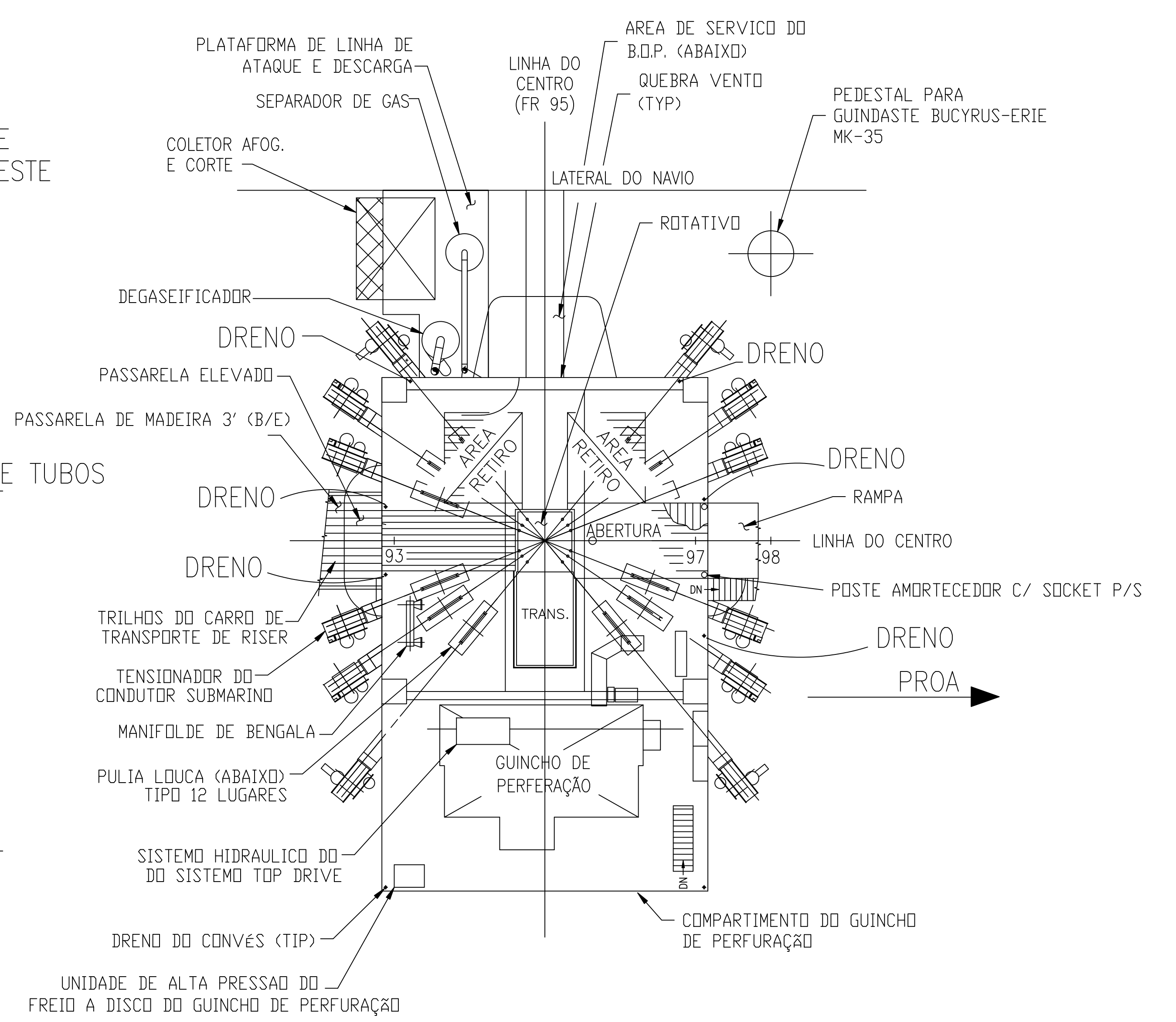
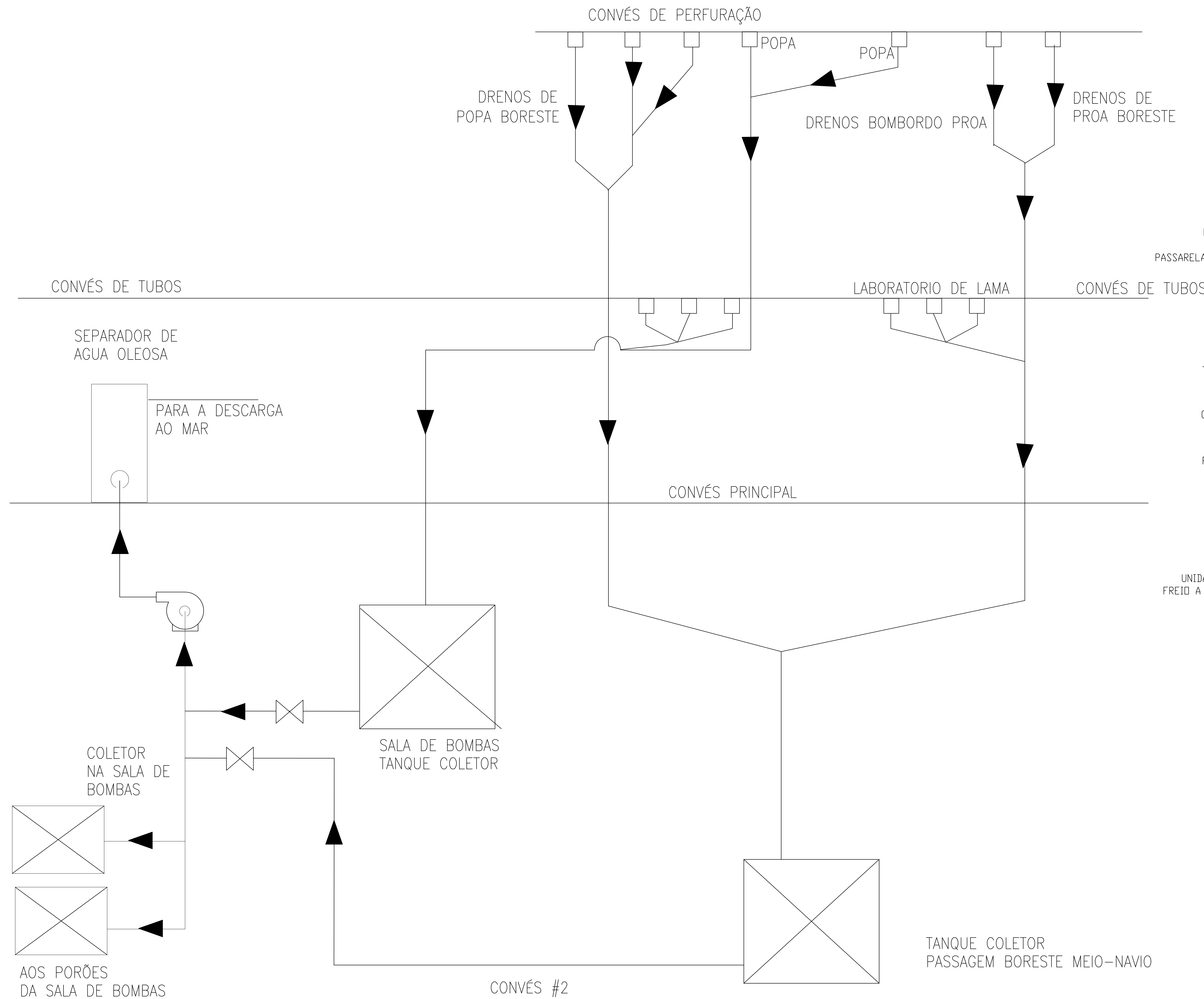


**UNIDADE MARÍTIMA DE PERFURAÇÃO NS-21**  
**CROQUI DO SISTEMA DE FLUIDO DE**  
**PERFURAÇÃO E DO SISTEMA DE ÓLEO DIESEL**

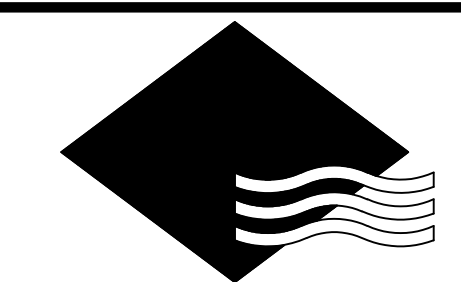
Revisão 0

Fev/2005





CONVÉS DE PERFURAÇÃO

No.	REFERÊNCIA	DESENHO No.
 <b>DIAMOND</b> OFFSHORE P O BOX 4558 HOUSTON, TEXAS 77210		
OCEAN CLIPPER		
DRENOS DE CONVÉS PERFURAÇÃO		
ENG:	CHKD: A.M.A.S.E.	DWG No.:
DESENHO: MSM	APRVD:	FIG. 24 port
ESCALA: N.T.S.	NOME ACAD:	REV. #
DATA: 5/29/97	SHT. 1 OF 1	FIG24 port.DWG 0



