

- REMARKS
- : WITH THERMAL INSULATION
 - ⊕ : MARKED VALVE TO BE NORMALLY CLOSED POSITION

TITLE: OCEAN RIG DRILL SHIP

**LUB. OIL SYSTEM
(TRANSFER, PURIFYING
FOR PORT E/R)**

HULL NO. : 1979/2013/2032	DWG. NO. : MB101.30(1/8)	S13
------------------------------	-----------------------------	------------

SAMSUNG HEAVY INDUSTRIES CO., LTD

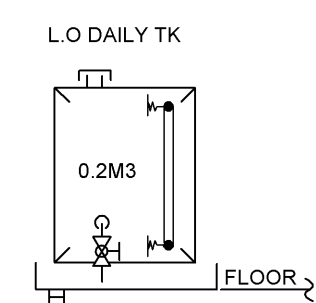
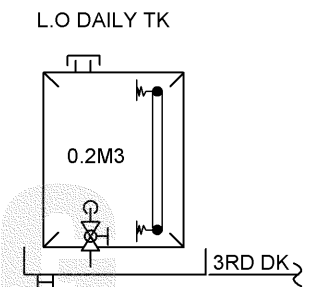
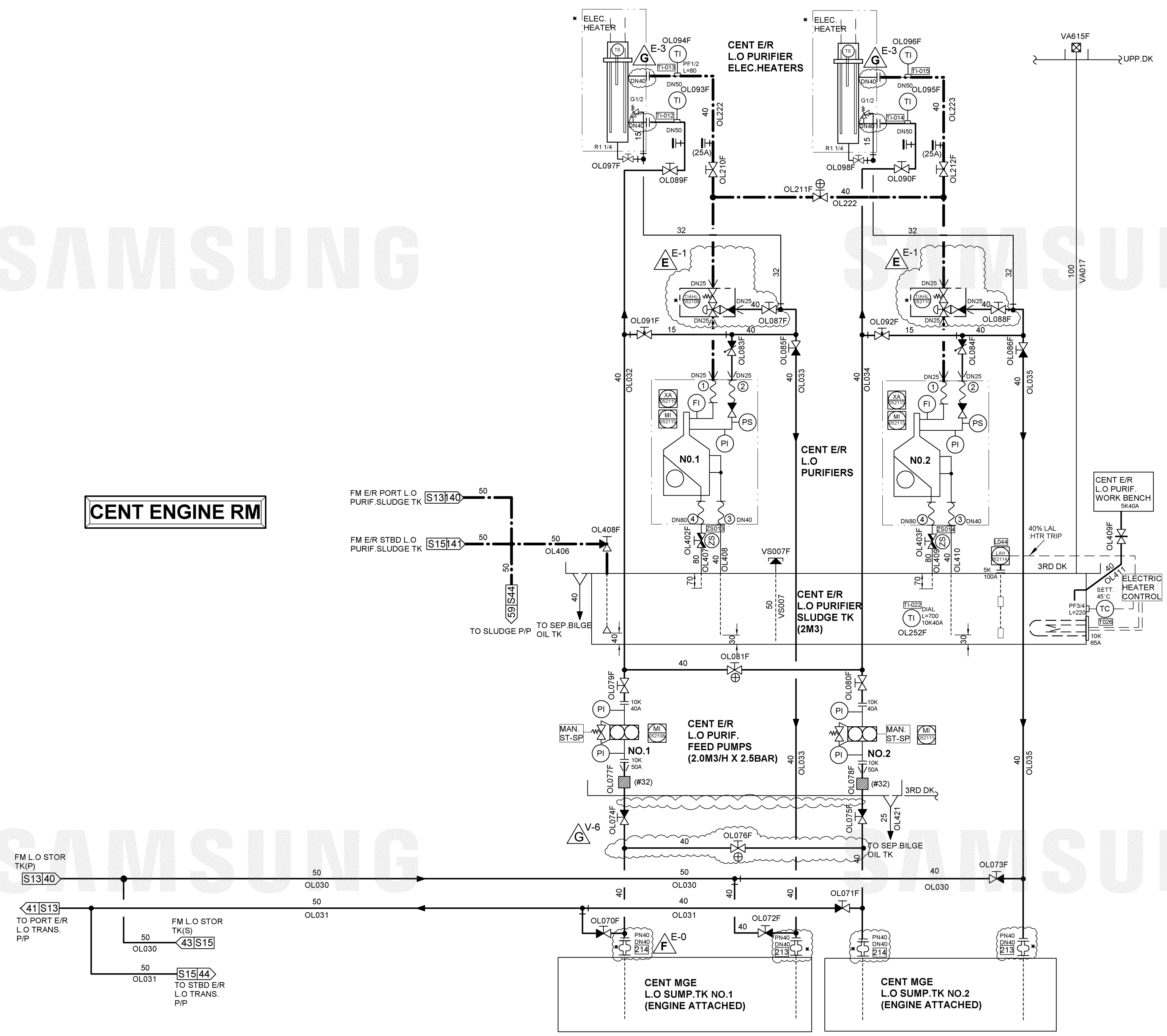
SAMSUNG

SAMSUNG

SAMSUNG

SAMSUNG

CENT ENGINE RM



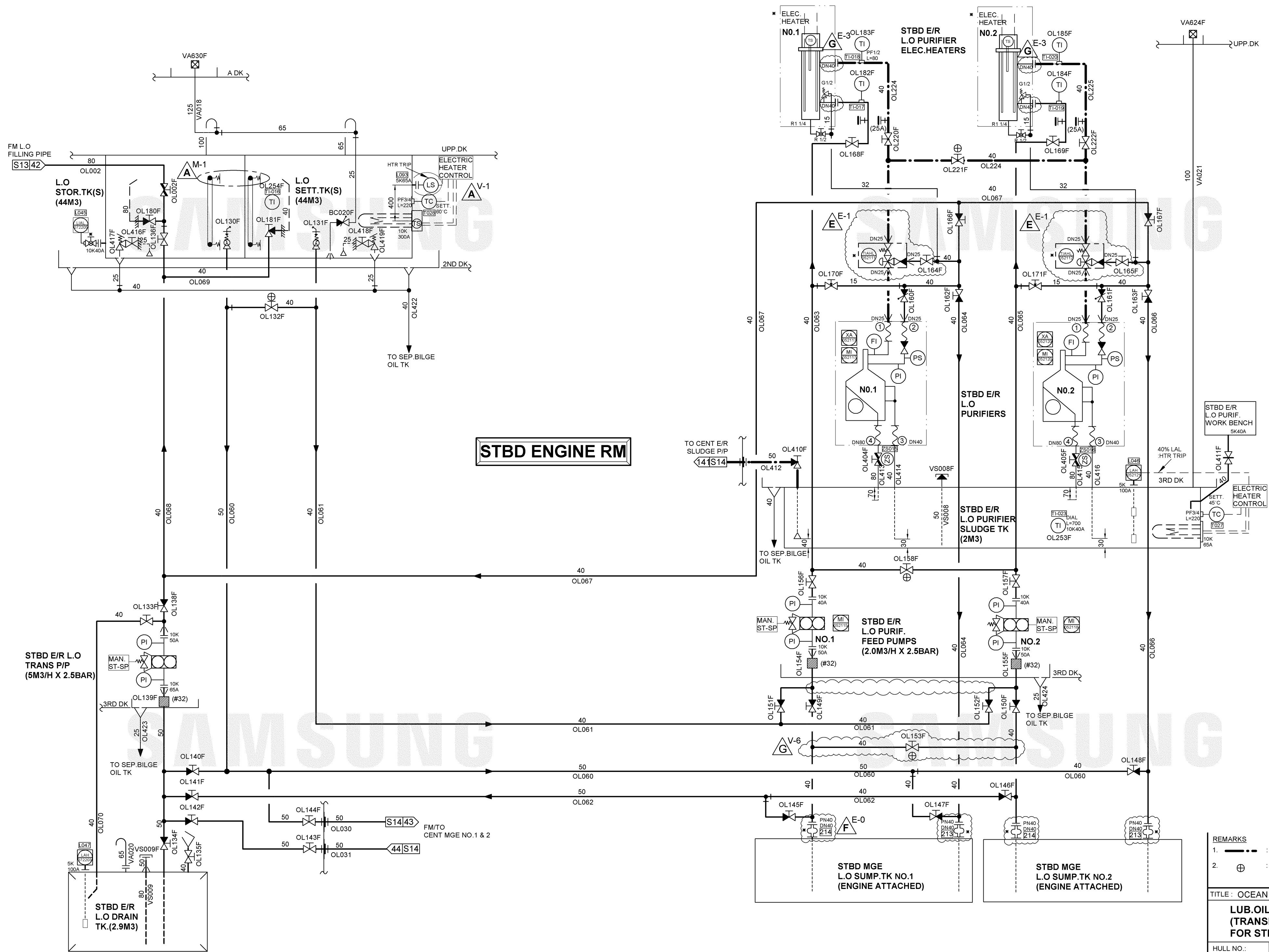
- REMARKS
- : WITH THERMAL INSULATION
 - ⊕ : MARKED VALVE TO BE NORMALLY CLOSED POSITION

TITLE: OCEAN RIG DRILL SHIP

**LUB.OIL SYSTEM
(TRANSFER, PURIFYING
FOR CENT E/R)**

HULL NO.:	DWG. NO.:	S14
1979/2013/2032	MB101.30(2/8)	

SAMSUNG HEAVY INDUSTRIES CO., LTD



STBD ENGINE RM

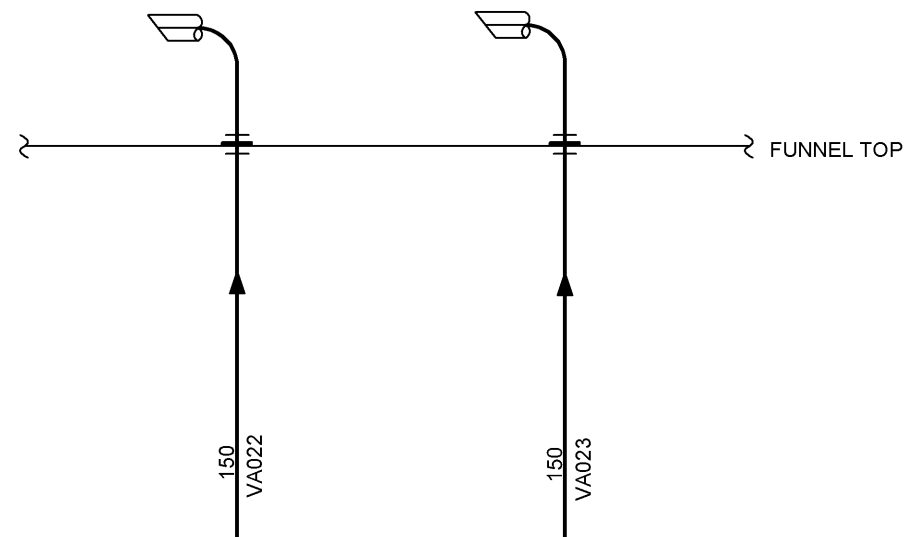
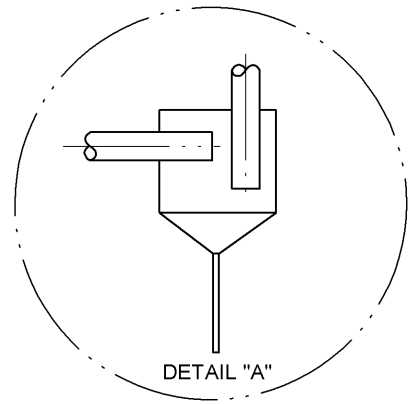
- REMARKS
- : WITH THERMAL INSULATION
 - ⊕ : MARKED VALVE TO BE NORMALLY CLOSED POSITION

TITLE : OCEAN RIG DRILL SHIP

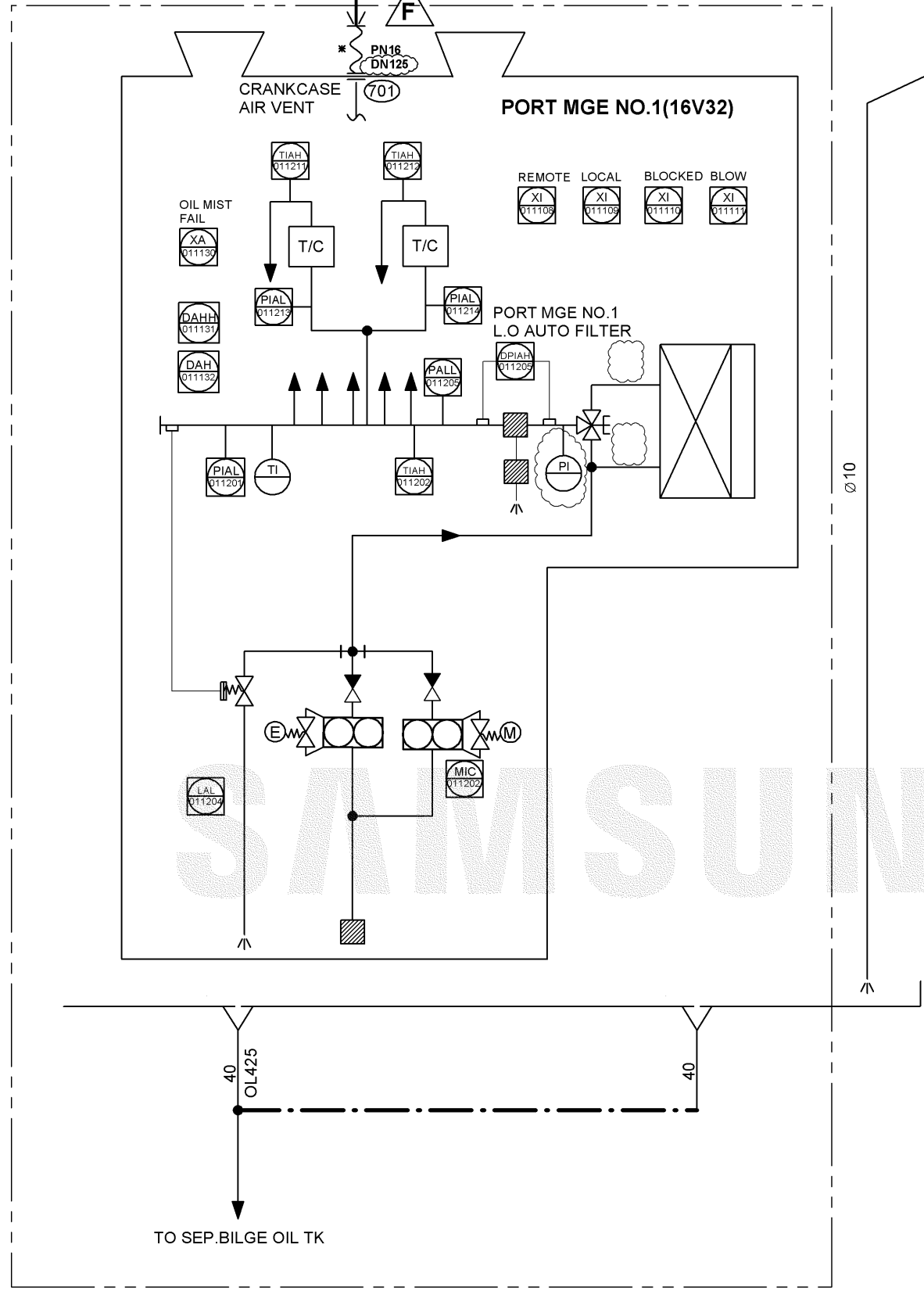
**LUB.OIL SYSTEM
(TRANSFER, PURIFYING
FOR STBD E/R)**

HULL NO. : 1979/2013/2032	DWG. NO. : MB101.30(3/8)	S15
------------------------------	-----------------------------	------------

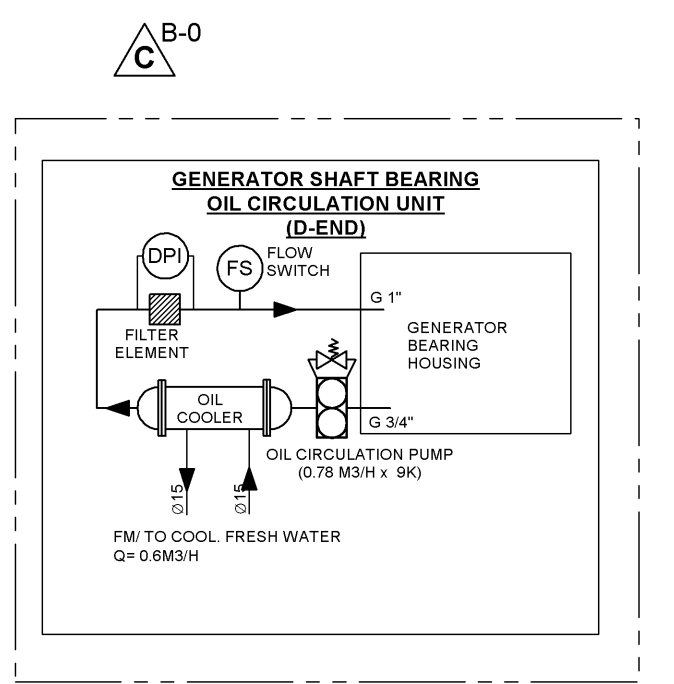
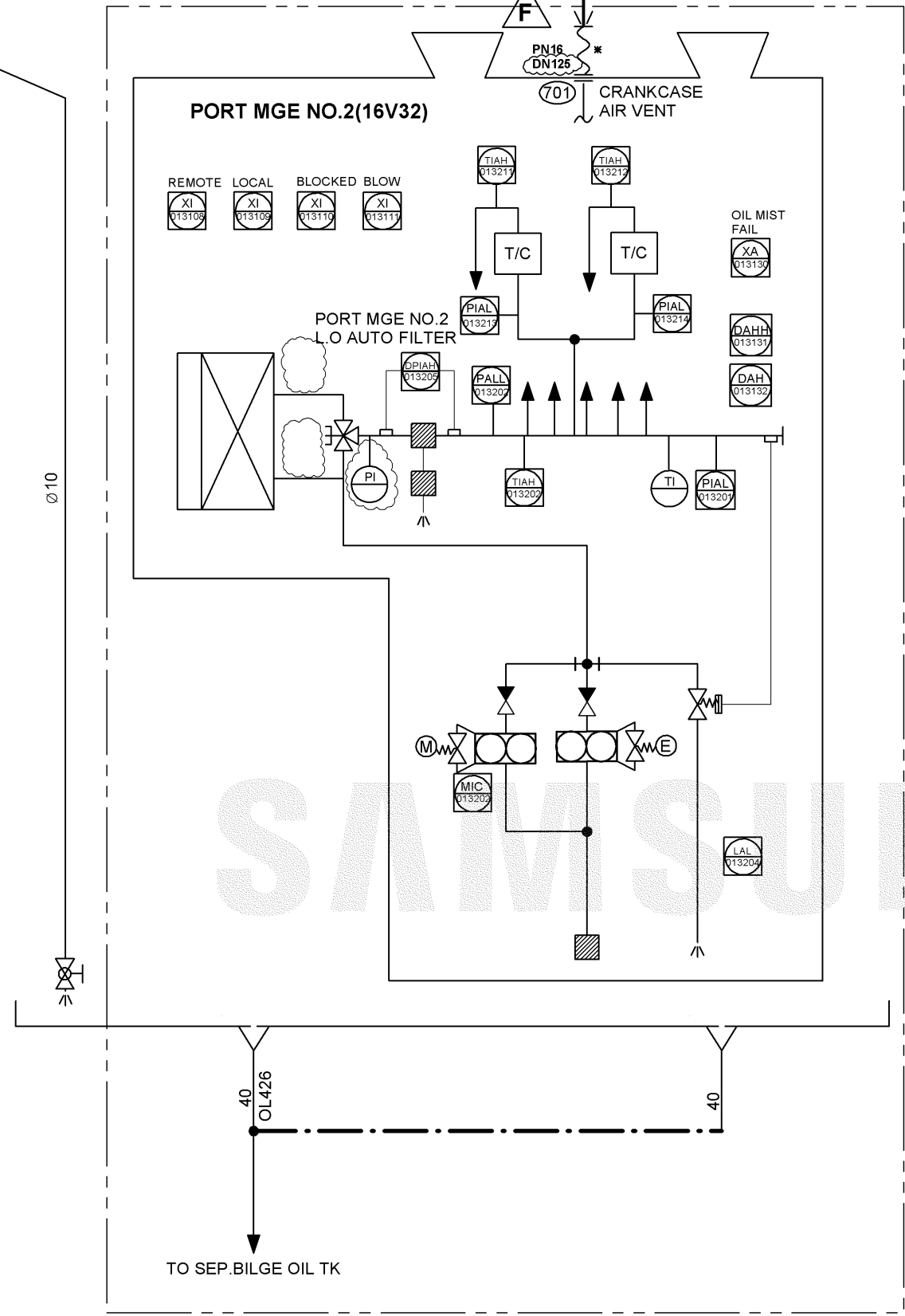
SAMSUNG HEAVY INDUSTRIES CO., LTD



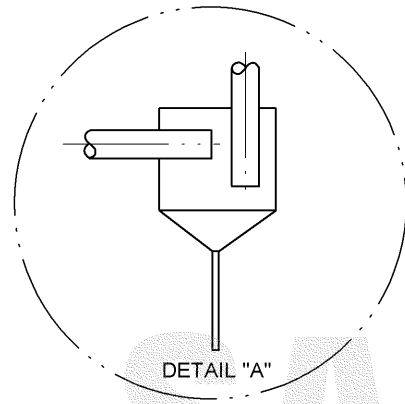
SAMSUNG



PORT ENGINE RM

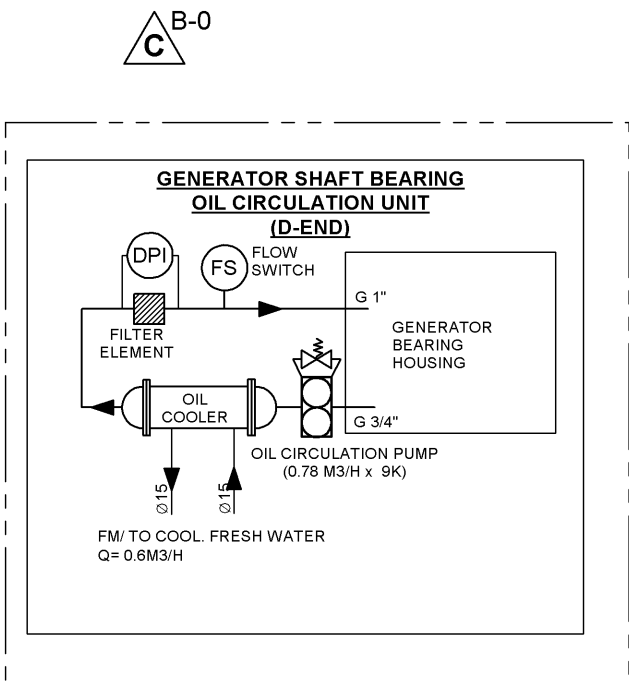
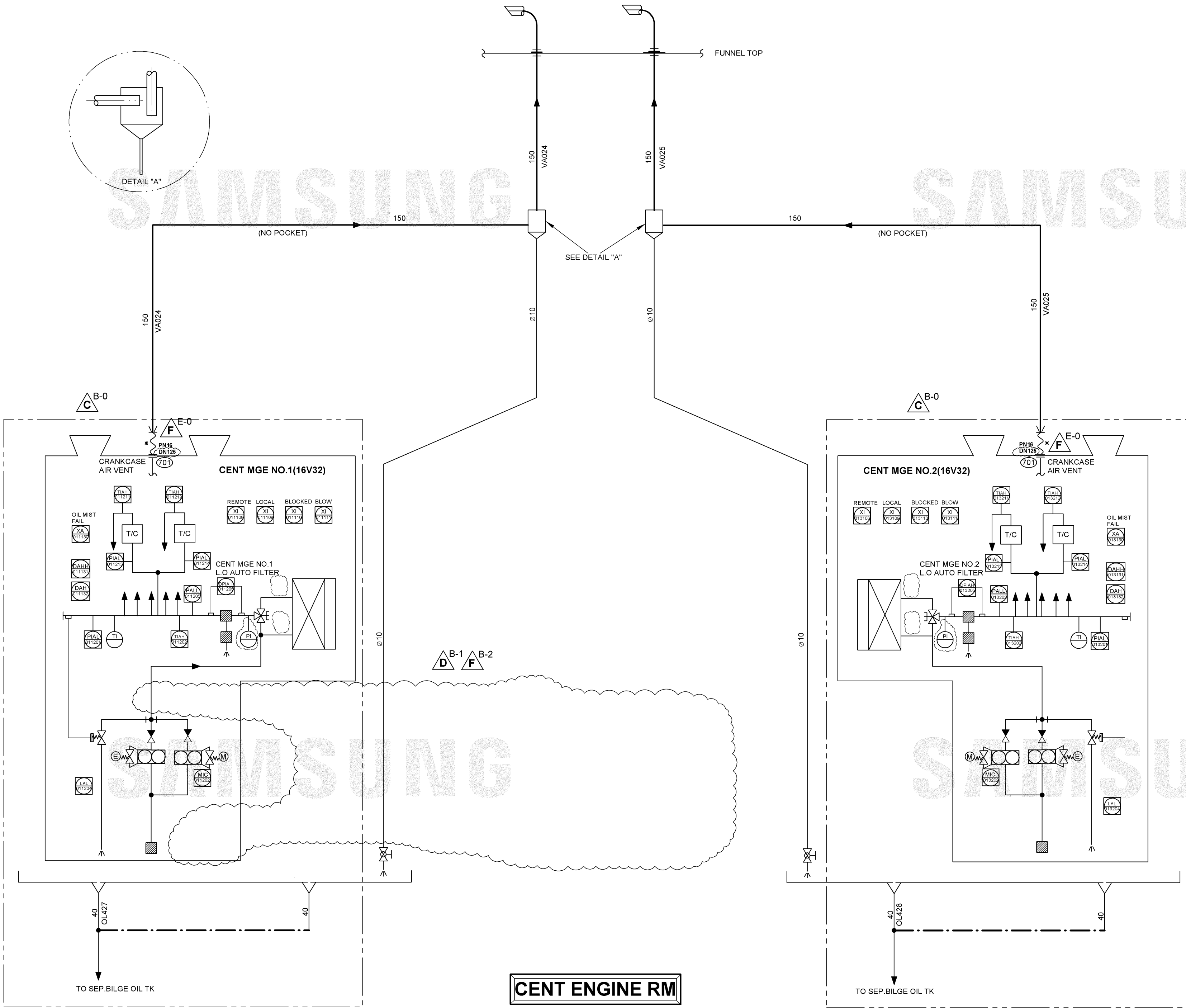


TITLE: OCEAN RIG DRILLSHIP			
LUB.OIL SYSTEM (PORT E/R MGE SERVICE)			
HULL NO.:	DWG. NO.:		S16
1979/2013/2032	MB101.30(4/8)		
SAMSUNG HEAVY INDUSTRIES CO., LTD			



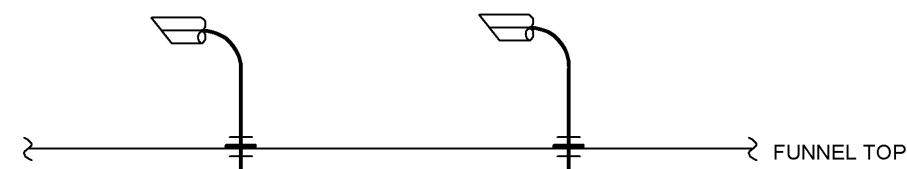
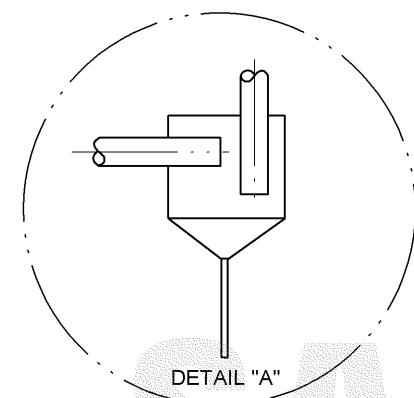
SAMSUNG

SAMSUNG

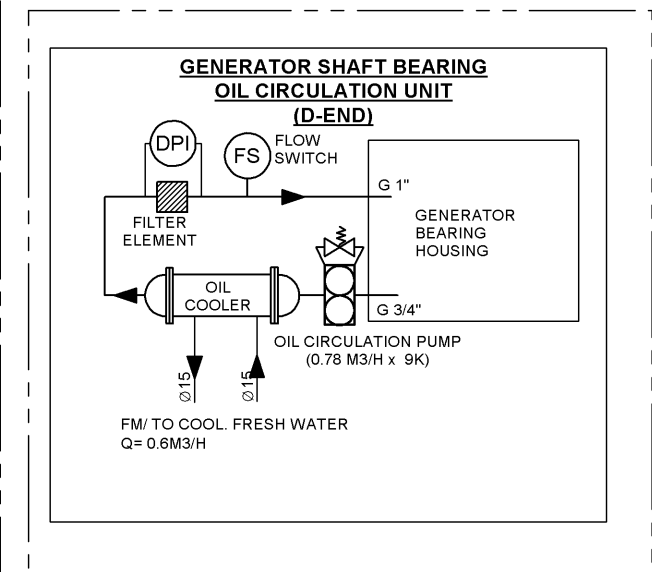
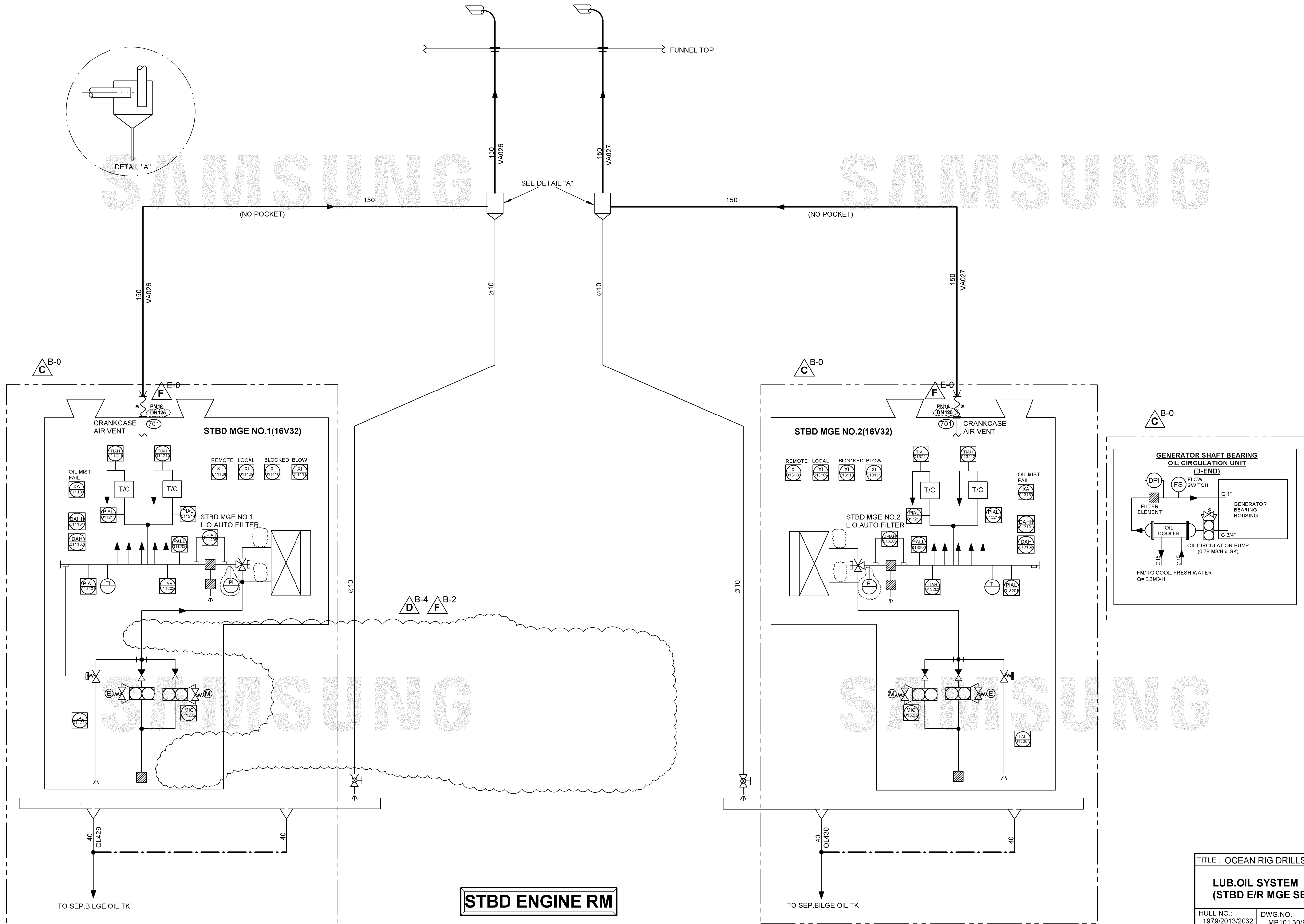


CENT ENGINE RM

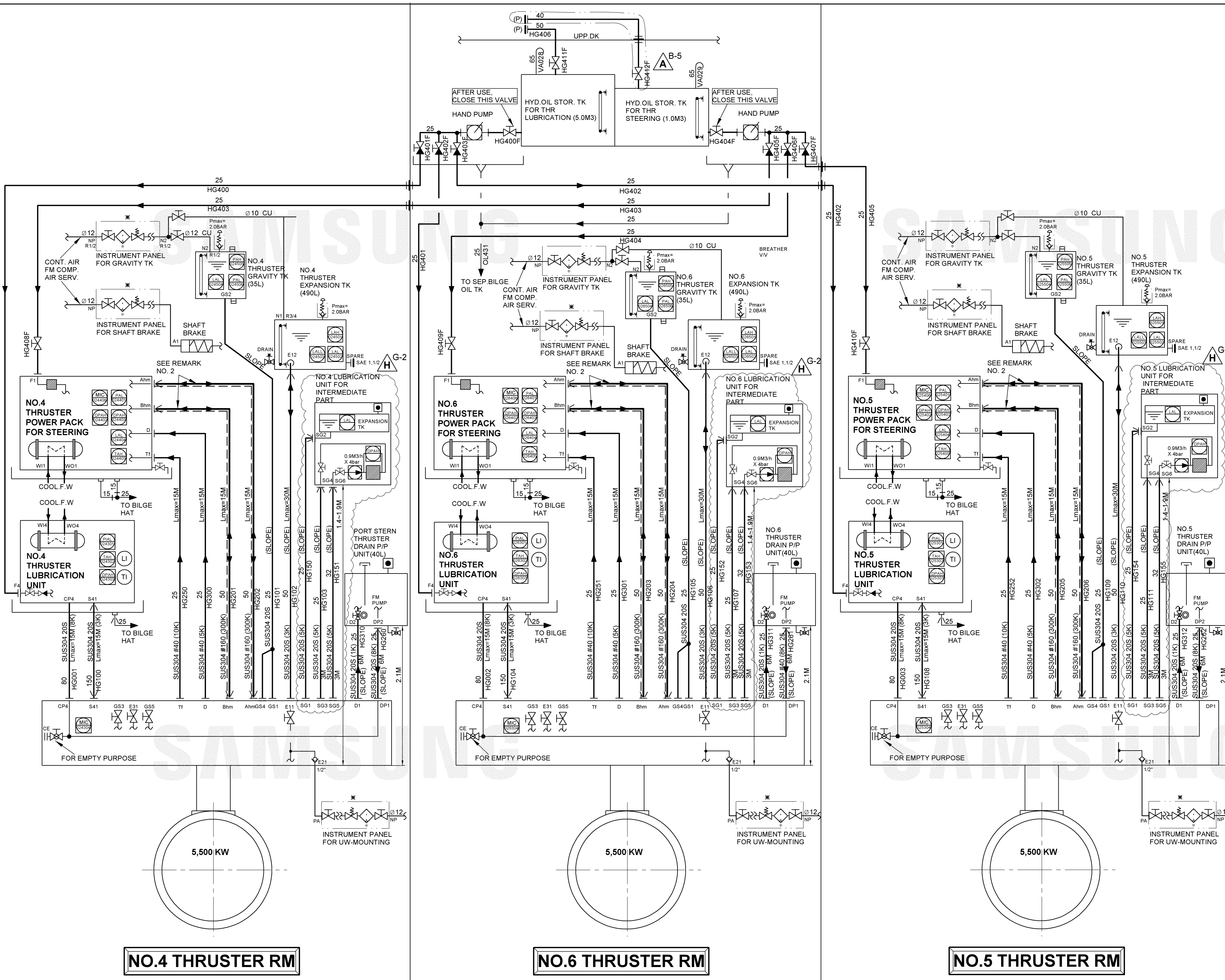
TITLE : OCEAN RIG DRILLSHIP		
LUB.OIL SYSTEM (CENT E/R MGE SERVICE)		
HULL NO. : 1979/2013/2032	DWG. NO. : MB101.30(5/8)	△ S17
SAMSUNG HEAVY INDUSTRIES CO., LTD		



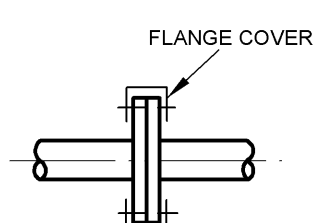
SAMSUNG SAMSUNG



TITLE: OCEAN RIG DRILLSHIP		
LUB.OIL SYSTEM (STBD E/R MGE SERVICE)		
HULL NO.: 1979/2013/2032	DWG. NO.: MB101.30(6/8)	S18
SAMSUNG HEAVY INDUSTRIES CO., LTD		



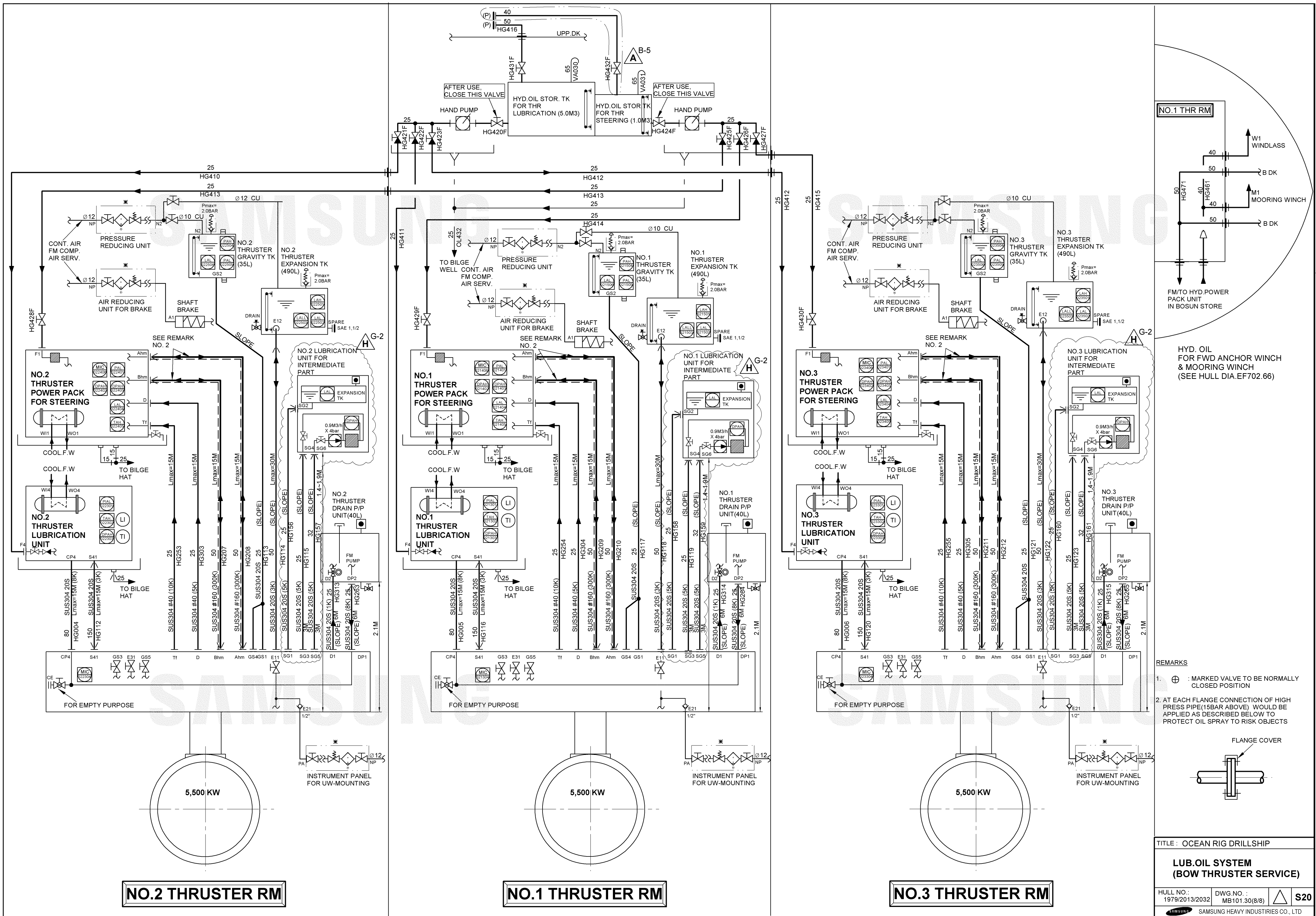
- REMARKS**
- ⊕ : MARKED VALVE TO BE NORMALLY CLOSED POSITION
 - AT EACH FLANGE CONNECTION OF HIGH PRESS PIPE(15BAR ABOVE) WOULD BE APPLIED AS DESCRIBED BELOW TO PROTECT OIL SPRAY TO RISK OBJECTS



NO.4 THRUSTER RM

NO.6 THRUSTER RM

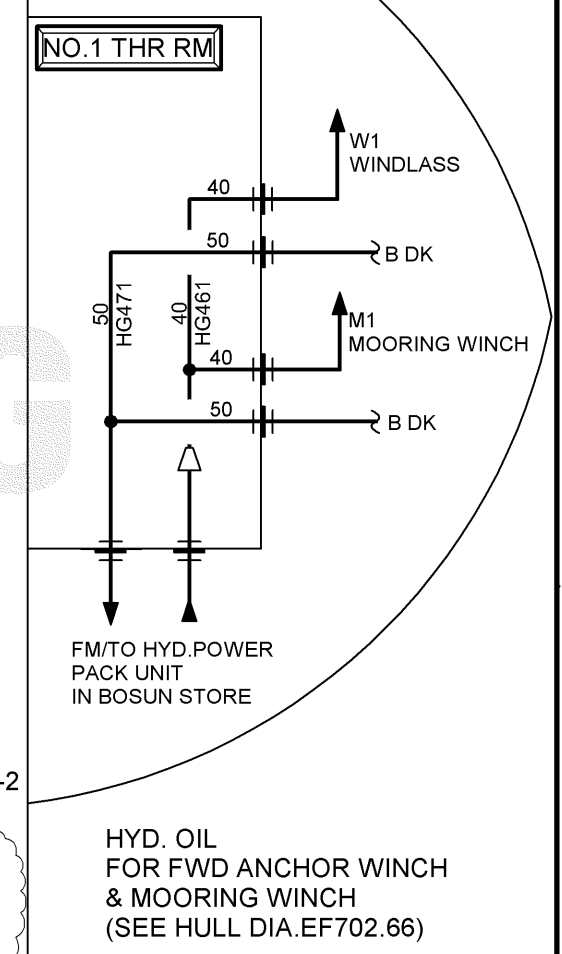
NO.5 THRUSTER RM



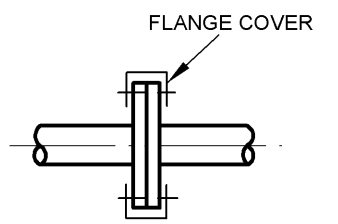
NO.2 THRUSTER RM

NO.1 THRUSTER RM

NO.3 THRUSTER RM



- REMARKS**
- ⊕ : MARKED VALVE TO BE NORMALLY CLOSED POSITION
 - AT EACH FLANGE CONNECTION OF HIGH PRESS PIPE(15BAR ABOVE) WOULD BE APPLIED AS DESCRIBED BELOW TO PROTECT OIL SPRAY TO RISK OBJECTS



TITLE: OCEAN RIG DRILLSHIP
LUB.OIL SYSTEM (BOW THRUSTER SERVICE)
 HULL NO.: 1979/2013/2032 DWG. NO.: MB101.30(8/8) S20
 SAMSUNG HEAVY INDUSTRIES CO., LTD
 DWG. SIZE: A3(297X420)