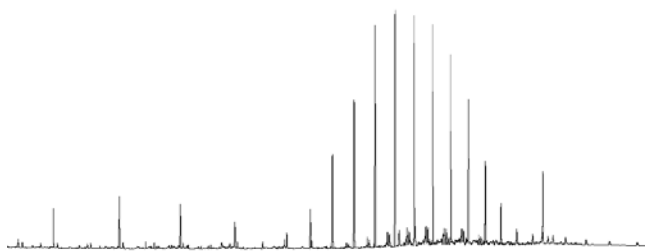


# BIOMARKER SUMMARY

## SATURATE REPORT

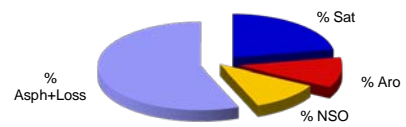
Well Name:	---	Sample Type:	Marine sediment (Environmental)
Depth:	-	Basin:	-
Sample Description:	1753551	Field:	-
IPEX Reference:	DBF0010		

### gas chromatogram

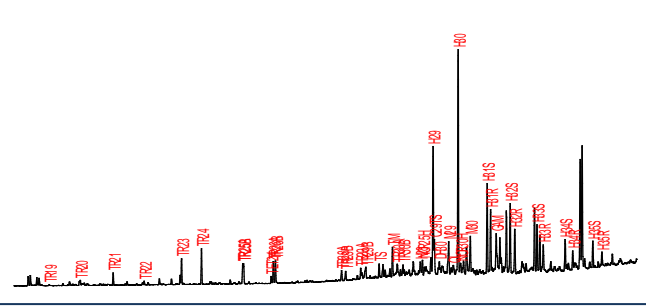


### BULKOIL PARAMETERS

% Sat:	22
% Aro:	11
% NSO:	11
% Asp+Loss:	56
d <sup>13</sup> C Oil:	-
d <sup>13</sup> C Sat:	-
d <sup>13</sup> C Aro:	-
% Sulphur:	-

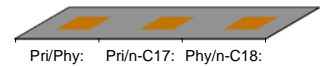


### m/z 191 chromatogram

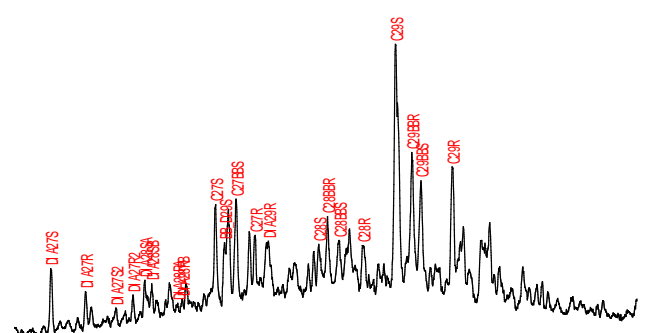


### GCPARAMETERS

Pri/Phy:	0,00
Pri/n-C17:	0,00
Phy/n-C18:	0,00
17/(17+27):	0,00



### m/z 217 chromatogram

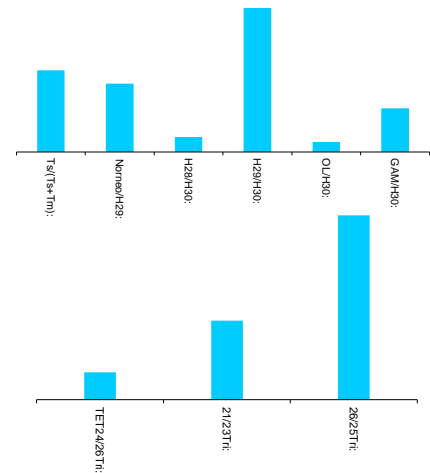


### BIOMARKERS

Hop/Ster:	9,32
-----------	------

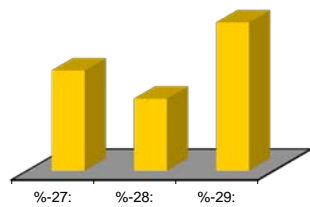
### TERPANES

Tri/Hopanes:	0,26
Ts/(Ts+Tm):	0,32
Norneo/H29:	0,27
H28/H30:	0,06
H29/H30:	0,57
OL/H30:	0,04
GAM/H30:	0,17
H35/H34:	0,78
25nor/Hop	0,71
TET24/26Tri:	0,17
21/23Tri:	0,48
26/25Tri:	1,12
Terpanes ppm:	621



### STERANES

Steranes ppm:	77
20S/(20S+20R):	0,66
bb/(aa+bb):	0,40
%-27:	31,21
%-28:	22,57
%-29:	46,22
DIA/REG Chol:	0,65



### COMMENTS