

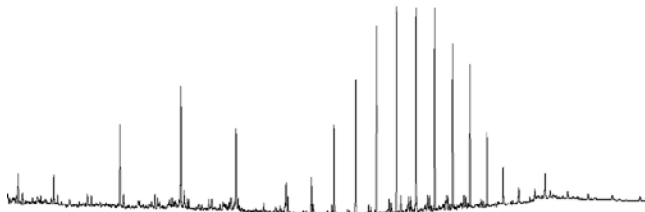
# BIOMARKER SUMMARY

## SATURATE REPORT

Well Name: ---  
 Depth: -  
 Sample Description: 1753548  
 IPEX Reference: DBF0007

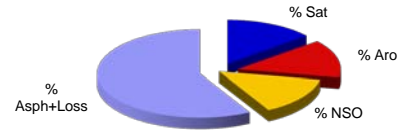
Sample Type: Marine sediment (Environmental)  
 Basin: -  
 Field: -

### gas chromatogram

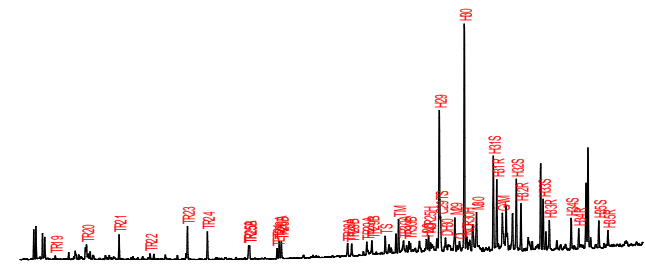


### BULKOIL PARAMETERS

% Sat: 14  
 % Aro: 14  
 % NSO: 14  
 % Asp+Loss: 58  
 d<sup>13</sup>C Oil: -  
 d<sup>13</sup>C Sat: -  
 d<sup>13</sup>C Aro: -  
 % Sulphur: -

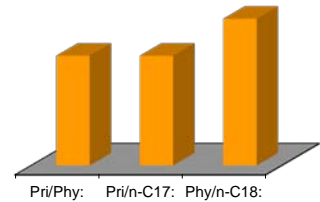


### m/z 191 chromatogram

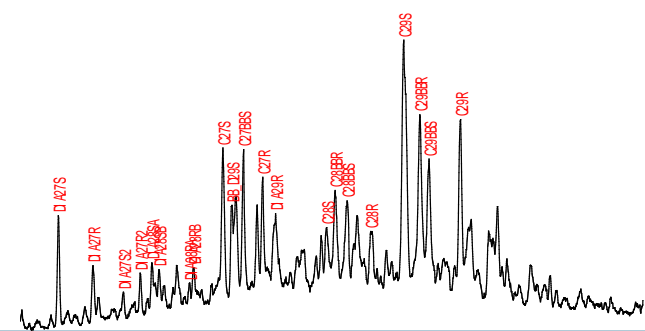


### GCPARAMETERS

Pri/Phy: 0,75  
 Pri/n-C17: 0,75  
 Phy/n-C18: 1,00  
 CPI-1: 0,00  
 17/(17+27): 0,07



### m/z 217 chromatogram

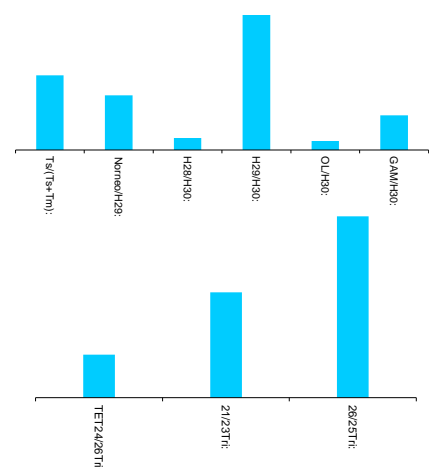


### BIOMARKERS

Hop/Ster: 7,87

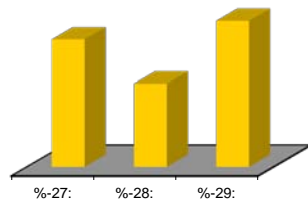
### TERPANES

Tri/Hopanes: 0,26  
 Ts/(Ts+Tm): 0,34  
 Norneo/H29: 0,25  
 H28/H30: 0,05  
 H29/H30: 0,62  
 OL/H30: 0,04  
 GAM/H30: 0,16  
 H35/H34: 0,81  
 25nor/Hop: 0,76  
 TET24/26Tri: 0,30  
 21/23Tri: 0,74  
 26/25Tri: 1,28  
 Terpanes ppm: 655



### STERANES

Steranes ppm: 89  
 20S/(20S+20R): 0,58  
 bb/(aa+bb): 0,42  
 %-27: 35,71  
 %-28: 23,35  
 %-29: 40,94  
 DIA/REG Chol: 0,65



### COMMENTS