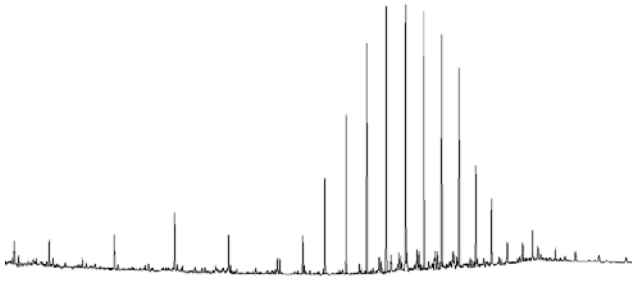


# BIOMARKER SUMMARY

## SATURATE REPORT

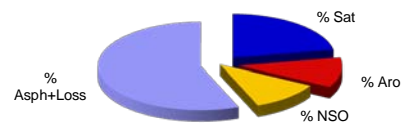
Well Name:	---	Sample Type:	Marine sediment (Environmental)
Depth:	0	Basin:	0,0
Sample Description:	1753547	Field:	0,0
IPEX Reference:	DBF0006		

### gas chromatogram

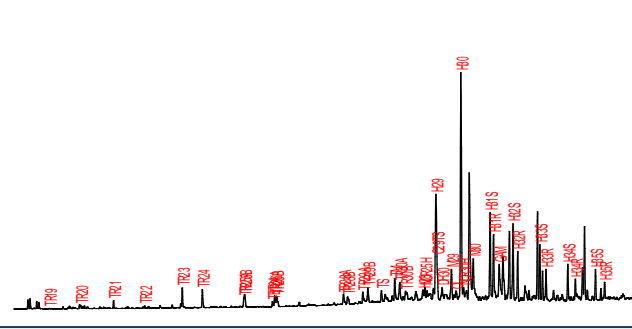


### BULKOIL PARAMETERS

% Sat:	22
% Aro:	11
% NSO:	11
% Asp+Loss:	56
d <sup>13</sup> C Oil:	-
d <sup>13</sup> C Sat:	-
d <sup>13</sup> C Aro:	-
% Sulphur:	-

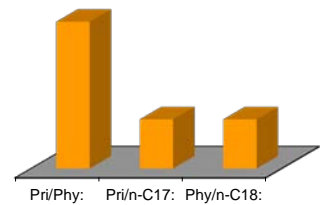


### m/z 191 chromatogram

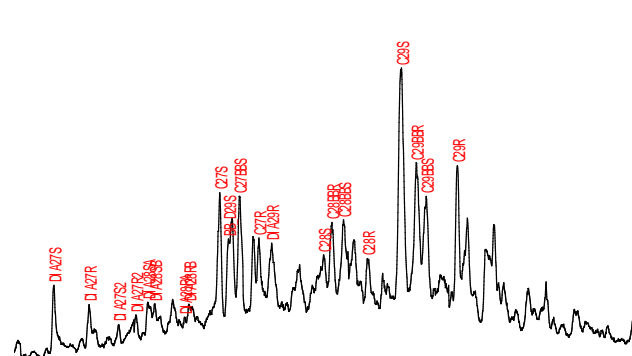


### GCPARAMETERS

Pri/Phy:	1,00
Pri/n-C17:	0,33
Phy/n-C18:	0,33
17/(17+27):	0,04



### m/z 217 chromatogram

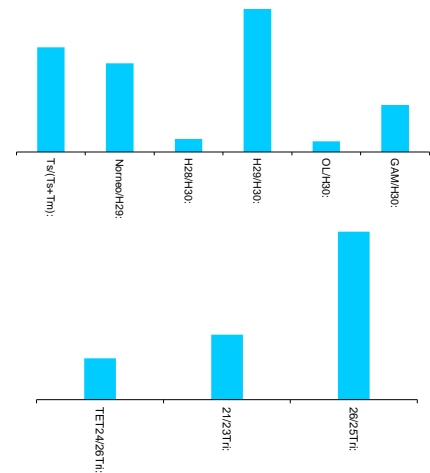


### BIOMARKERS

Hop/Ster:	10,08
-----------	-------

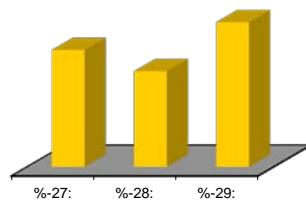
### TERPANES

Tri/Hopanes:	0,19
Ts/(Ts+Tm):	0,34
Norneo/H29:	0,29
H28/H30:	0,04
H29/H30:	0,47
OL/H30:	0,04
GAM/H30:	0,15
H35/H34:	0,81
25nor/Hop	0,56
TET24/26Tri:	0,25
21/23Tri:	0,39
26/25Tri:	1,02
Terpanes ppm:	1.391



### STERANES

Steranes ppm:	156
20S/(20S+20R):	0,61
bb/(aa+bb):	0,39
%-27:	32,72
%-28:	26,74
%-29:	40,53
DIA/REG Chol:	0,55



### COMMENTS