

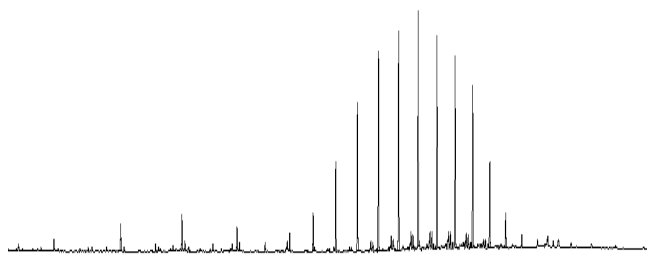
# BIOMARKER SUMMARY

## SATURATE REPORT

Well Name: ---  
 Depth: -  
 Sample Description: 1753544  
 IPEX Reference: DBF0003

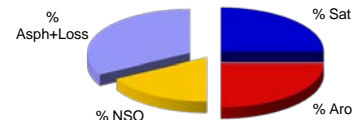
Sample Type: Marine sediment (Environmental)  
 Basin: -  
 Field: -

### gas chromatogram

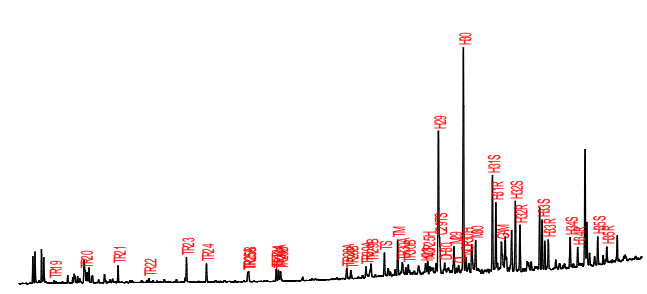


### BULKOIL PARAMETERS

% Sat: 25  
 % Aro: 25  
 % NSO: 17  
 % Asph+Loss: 33  
 d<sup>13</sup>C Oil: -  
 d<sup>13</sup>C Sat: -  
 d<sup>13</sup>C Aro: -  
 % Sulphur: -

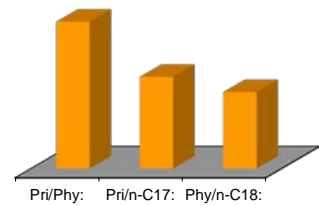


### m/z 191 chromatogram

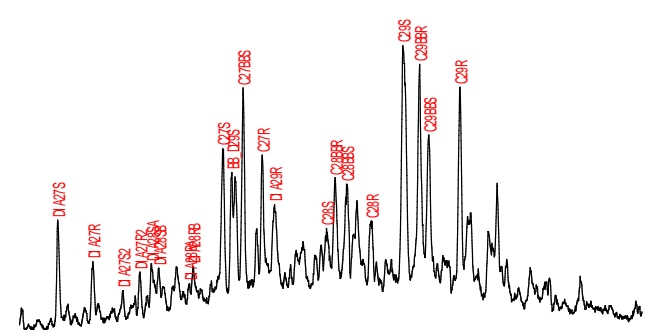


### GCPARAMETERS

Pri/Phy: 0,80  
 Pri/n-C17: 0,50  
 Phy/n-C18: 0,42  
 17/(17+27): 0,03



### m/z 217 chromatogram

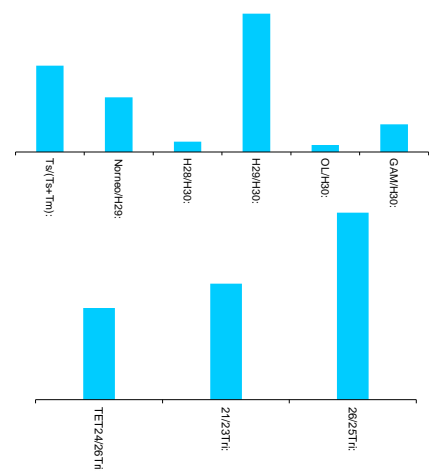


### BIOMARKERS

Hop/Ster: 7,73

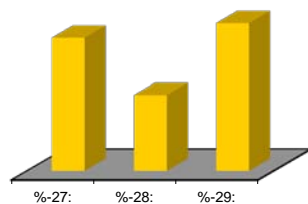
### TERPANES

Tri/Hopanes: 0,20  
 Ts/(Ts+Tm): 0,40  
 Norneo/H29: 0,25  
 H28/H30: 0,05  
 H29/H30: 0,63  
 OL/H30: 0,03  
 GAM/H30: 0,13  
 H35/H34: 0,86  
 25nor/Hop: 0,71  
 TET24/26Tri: 0,56  
 21/23Tri: 0,70  
 26/25Tri: 1,13  
 Terpanes ppm: 877



### STERANES

Steranes ppm: 127  
 20S/(20S+20R): 0,53  
 bb/(aa+bb): 0,45  
 %-27: 37,30  
 %-28: 21,27  
 %-29: 41,43  
 DIA/REG Chol: 0,61



### COMMENTS