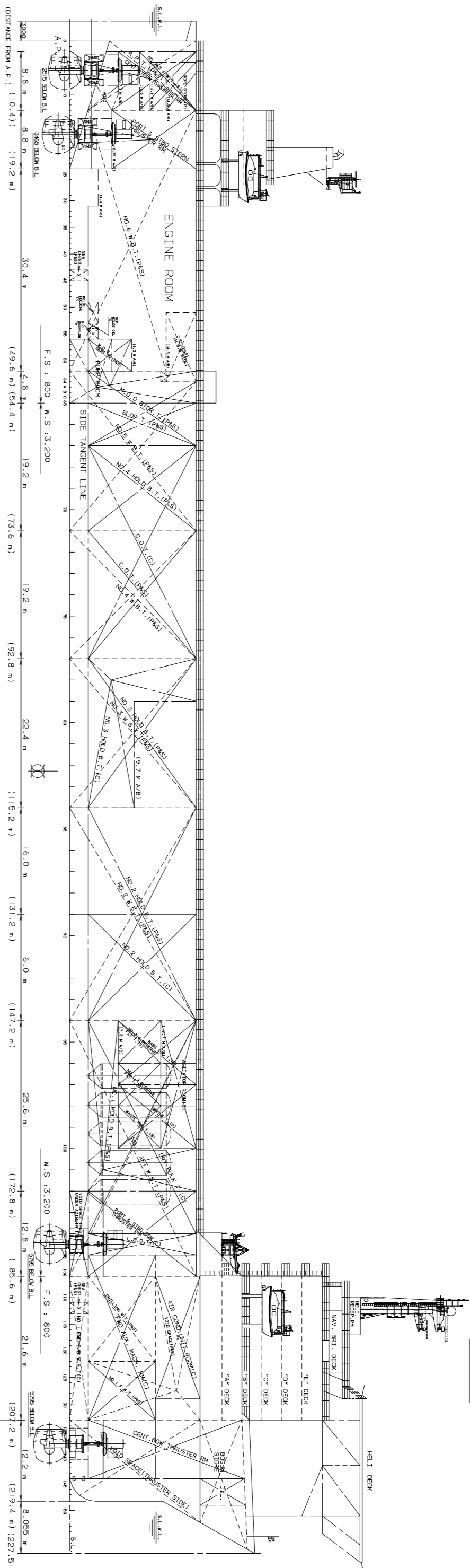
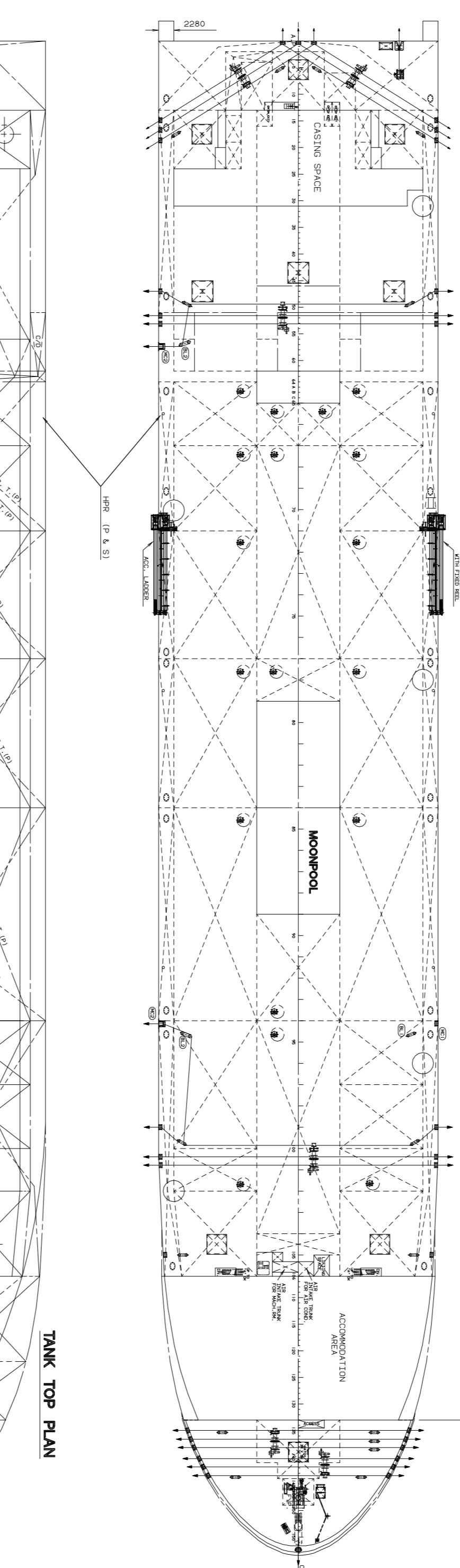


CAPACITY PLAN WITH DEADWEIGHT SCALE

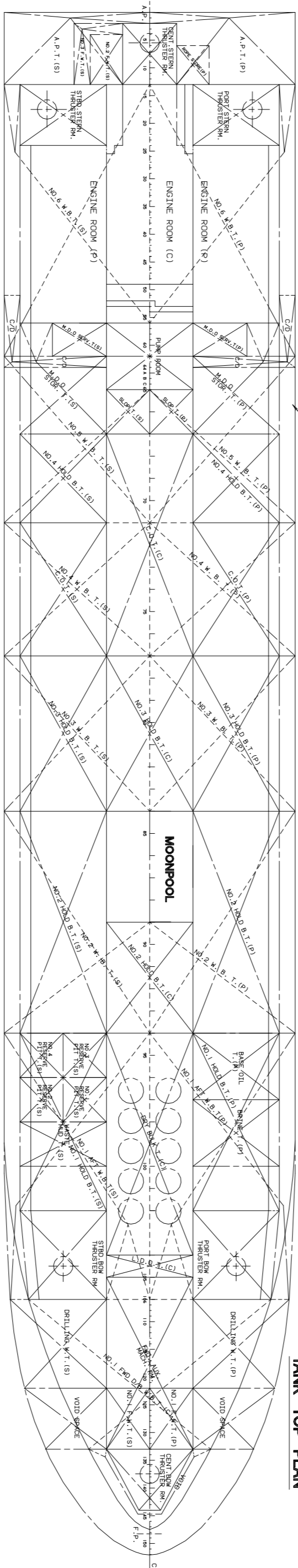
PROFILE



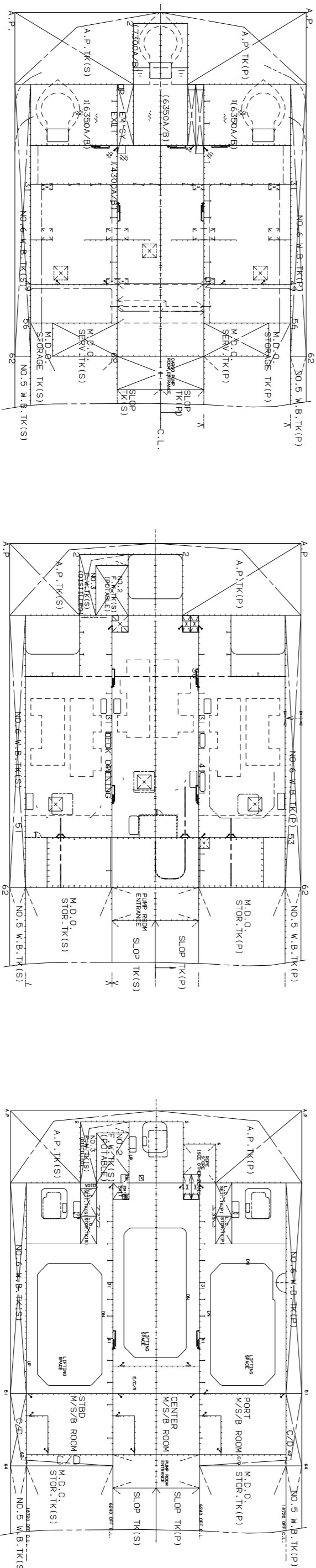
UPPER DECK PLAN F.C.E. DECK PLAN



TANK TOP PLAN

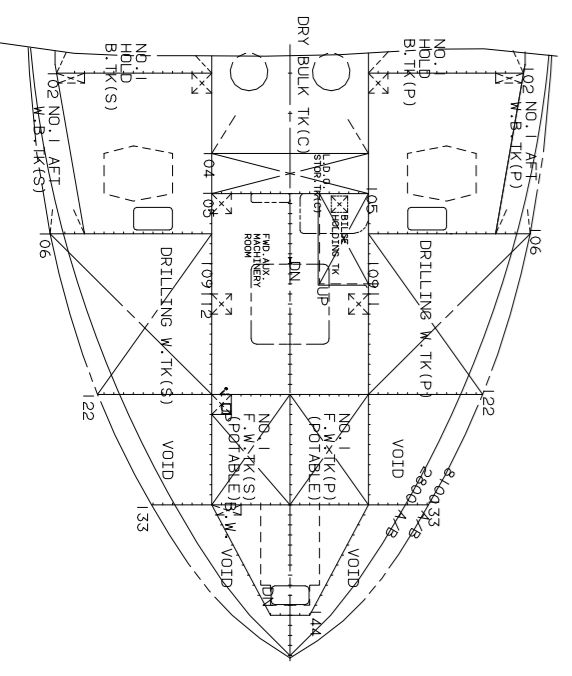


AFT. E/R FLOOR PLAN

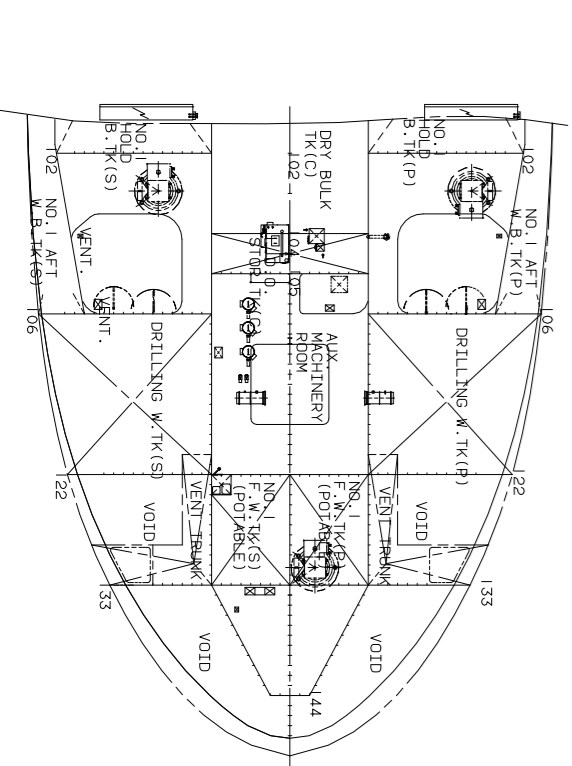


AFT. E/R 3RD DECK PLAN

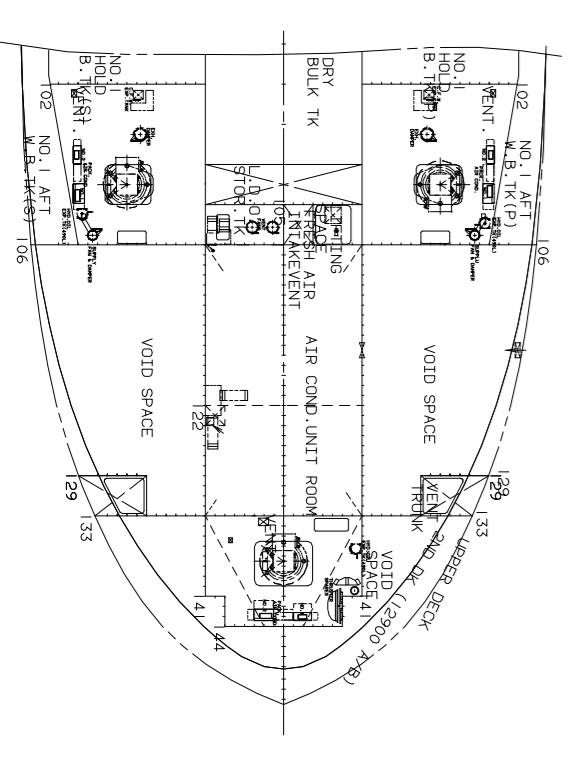
FWD AUX. M/R FLOOR PLAN



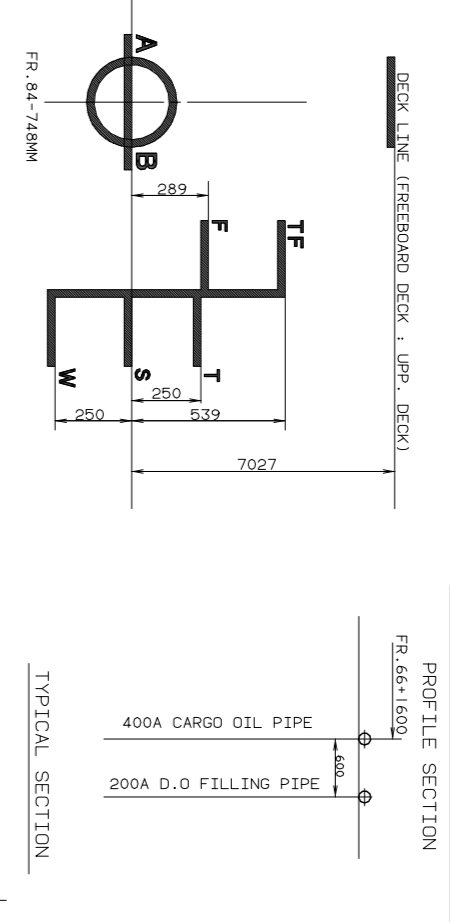
FWD AUX. M/R 3RD DECK PLAN



FWD AUX. M/R 2ND DECK PLAN



DETAIL OF MANIFOLD



ALL FLANGE (MM) ISO 9001	D	Φ	4	ISO 15
4000 OIL PIPE (FLAMERS) (D04)	4917	4579.5	4219	W23
4000 OIL PIPE (FLAMERS) (D04)	4243	4238.5	4219	W23
DIETSEL OIL PIPE (FLAMERS) (D04)	4239	4190.5	4151.4	W16

NAME	TYPE	CAPACITY	QTY	LOCATION
BALLAST PUMP	VERTICAL, SINGLE STAGE	2,500 M ³ /H	2	ENGINE ROOM
BALLAST EXTRACTOR	VERTICAL, SINGLE STAGE	2,500 M ³ /H	2	ENGINE ROOM
BALLAST EXTRACTOR	VERTICAL, SINGLE STAGE	2,500 M ³ /H	2	ENGINE ROOM
BALLAST EXTRACTOR	VERTICAL, SINGLE STAGE	2,500 M ³ /H	2	ENGINE ROOM
BALLAST EXTRACTOR	VERTICAL, SINGLE STAGE	2,500 M ³ /H	2	ENGINE ROOM
BALLAST EXTRACTOR	VERTICAL, SINGLE STAGE	2,500 M ³ /H	2	ENGINE ROOM
BALLAST EXTRACTOR	VERTICAL, SINGLE STAGE	2,500 M ³ /H	2	ENGINE ROOM
BALLAST EXTRACTOR	VERTICAL, SINGLE STAGE	2,500 M ³ /H	2	ENGINE ROOM
BALLAST EXTRACTOR	VERTICAL, SINGLE STAGE	2,500 M ³ /H	2	ENGINE ROOM
BALLAST EXTRACTOR	VERTICAL, SINGLE STAGE	2,500 M ³ /H	2	ENGINE ROOM

ITEM	VALUE
LENGTH O. A.	226.700 M
LENGTH B. P.	219.400 M
BREADTH	42.000 M
DEPTH	19.000 M
SCANT. DRAUGHT (MOLDED)	13.000 M
TRANSIT DRAUGHT (MOLDED)	8.500 M

ITEM	NET TONNAGE
GROSS TONNAGE	59,432
NET TONNAGE	17,889

DEPTH (M)	DISPLACEMENT (MT)	DEADWEIGHT (MT)
0.0	110,517	110,517
0.5	119,928	119,928
1.0	129,339	129,339
1.5	138,750	138,750
2.0	148,161	148,161
2.5	157,572	157,572
3.0	166,983	166,983
3.5	176,394	176,394
4.0	185,805	185,805
4.5	195,216	195,216
5.0	204,627	204,627
5.5	214,038	214,038
6.0	223,449	223,449
6.5	232,860	232,860
7.0	242,271	242,271
7.5	251,682	251,682
8.0	261,093	261,093
8.5	270,504	270,504
9.0	279,915	279,915
9.5	289,326	289,326
10.0	298,737	298,737
10.5	308,148	308,148
11.0	317,559	317,559
11.5	326,970	326,970
12.0	336,381	336,381
12.5	345,792	345,792
13.0	355,203	355,203
13.5	364,614	364,614
14.0	374,025	374,025
14.5	383,436	383,436
15.0	392,847	392,847
15.5	402,258	402,258
16.0	411,669	411,669
16.5	421,080	421,080
17.0	430,491	430,491
17.5	439,902	439,902
18.0	449,313	449,313
18.5	458,724	458,724
19.0	468,135	468,135
19.5	477,546	477,546
20.0	486,957	486,957
20.5	496,368	496,368
21.0	505,779	505,779
21.5	515,190	515,190
22.0	524,601	524,601
22.5	534,012	534,012
23.0	543,423	543,423
23.5	552,834	552,834
24.0	562,245	562,245
24.5	571,656	571,656
25.0	581,067	581,067
25.5	590,478	590,478
26.0	599,889	599,889
26.5	609,300	609,300
27.0	618,711	618,711
27.5	628,122	628,122
28.0	637,533	637,533
28.5	646,944	646,944
29.0	656,355	656,355
29.5	665,766	665,766
30.0	675,177	675,177
30.5	684,588	684,588
31.0	694,000	694,000
31.5	703,411	703,411
32.0	712,822	712,822
32.5	722,233	722,233
33.0	731,644	731,644
33.5	741,055	741,055
34.0	750,466	750,466
34.5	759,877	759,877
35.0	769,288	769,288
35.5	778,699	778,699
36.0	788,110	788,110
36.5	797,521	797,521
37.0	806,932	806,932
37.5	816,343	816,343
38.0	825,754	825,754
38.5	835,165	835,165
39.0	844,576	844,576
39.5	853,987	853,987
40.0	863,398	863,398
40.5	872,809	872,809
41.0	882,220	882,220
41.5	891,631	891,631
42.0	901,042	901,042
42.5	910,453	910,453
43.0	919,864	919,864
43.5	929,275	929,275
44.0	938,686	938,686
44.5	948,097	948,097
45.0	957,508	957,508
45.5	966,919	966,919
46.0	976,330	976,330
46.5	985,741	985,741
47.0	995,152	995,152
47.5	1,004,563	1,004,563
48.0	1,013,974	1,013,974
48.5	1,023,385	1,023,385
49.0	1,032,796	1,032,796
49.5	1,042,207	1,042,207
50.0	1,051,618	1,051,618
50.5	1,061,029	1,061,029
51.0	1,070,440	1,070,440
51.5	1,079,851	1,079,851
52.0	1,089,262	1,089,262
52.5	1,098,673	1,098,673
53.0	1,108,084	1,108,084
53.5	1,117,495	1,117,495
54.0	1,126,906	1,126,906
54.5	1,136,317	1,136,317
55.0	1,145,728	1,145,728
55.5	1,155,139	1,155,139
56.0	1,164,550	1,164,550
56.5	1,173,961	1,173,961
57.0	1,183,372	1,183,372
57.5	1,192,783	1,192,783
58.0	1,202,194	1,202,194
58.5	1,211,605	1,211,605
59.0	1,221,016	1,221,016
59.5	1,230,427	1,230,427
60.0	1,239,838	1,239,838
60.5	1,249,249	1,249,249
61.0	1,258,660	1,258,660
61.5	1,268,071	1,268,071
62.0	1,277,482	1,277,482
62.5	1,286,893	1,286,893
63.0	1,296,304	1,296,304
63.5	1,305,715	1,305,715
64.0	1,315,126	1,315,126
64.5	1,324,537	1,324,537
65.0	1,333,948	1,333,948
65.5	1,343,359	1,343,359
66.0	1,352,770	1,352,770
66.5	1,362,181	1,362,181
67.0	1,371,592	1,371,592
67.5	1,381,003	1,381,003
68.0	1,390,414	1,390,414
68.5	1,400,825	1,400,825
69.0	1,410,236	1,410,236
69.5	1,420,647	1,420,647
70.0	1,430,058	1,430,058
70.5	1,440,469	1,440,469
71.0	1,450,880	1,450,880
71.5	1,461,291	1,461,291
72.0	1,471,702	1,471,702
72.5	1,482,113	1,482,113
73.0	1,492,524	1,492,524
73.5	1,502,935	1,502,935
74.0	1,513,346	1,513,346
74.5	1,523,757	1,523,757
75.0	1,534,168	1,534,168
75.5	1,544,579	1,544,579
76.0	1,554,990	1,554,990
76.5	1,565,401	1,565,401
77.0	1,575,812	1,575,812
77.5	1,586,223	1,586,223
78.0	1,596,634	1,596,634
78.5	1,607,045	1,607,045
79.0	1,617,456	1,617,456
79.5	1,627,867	1,627,867
80.0	1,638,278	1,638,278
80.5	1,648,689	1,648,689
81.0	1,659,100	1,659,100
81.5	1,669,511	1,669,511
82.0	1,679,922	1,679,922
82.5	1,690,333	1,690,333
83.0	1,700,744	1,700,744
83.5	1,711,155	1,711,155
84.0	1,721,566	1,721,566
84.5	1,731,977	1,731,977
85.0	1,742,388	1,742,388
85.5	1,752,799	1,752,799
86.0	1,763,210	1,763,210
86.5	1,773,621	1,773,621
87.0	1,784,032	1,784,032
87.5	1,794,443	1,794,443
88.0	1,804,854	1,804,854
88.5	1,815,265	1,815,265
89.0	1,825,676	1,825,676
89.5	1,836,087	1,836,087
90.0	1,846,498	1,846,498
90.5	1,856,909	1,856,909
91.0	1,867,320	1,867,320
91.5	1,877,731	1,877,731
92.0	1,888,142	1,888,142
92.5	1,898,553	1,898,553
93.0	1,908,964	1,908,964
93.5	1,919,375	1,919,375
94.0	1,929,786	1,929,786
94.5	1,940,197	1,940,197
95.0	1,950,608	1,950,608
95.5	1,961,019	1,961,019
96.0	1,971,430	1,971,430
96.5	1,981,841	1,981,841
97.0	1,992,252	1,992,252
97.5	2,002,663	2,002,663
98.0	2,013,074	2,013,074
98.5	2,023,485	2,023,485
99.0	2,033,896	2,033,896
99.5	2,044,307	2,044,307
100.0	2,054,718	2,054,718

DEPTH (M)	DISPLACEMENT (MT)	DEADWEIGHT (MT)
0.0	110,517	110,517
0.5	119,928	119,928
1.0	129,339	129,339
1.5	138,750	138,750
2.0	148,161	148,161
2.5	157,572	157,572
3.0	166,983	166,983
3.5	176,394	176,394
4.0	185,805	185,805