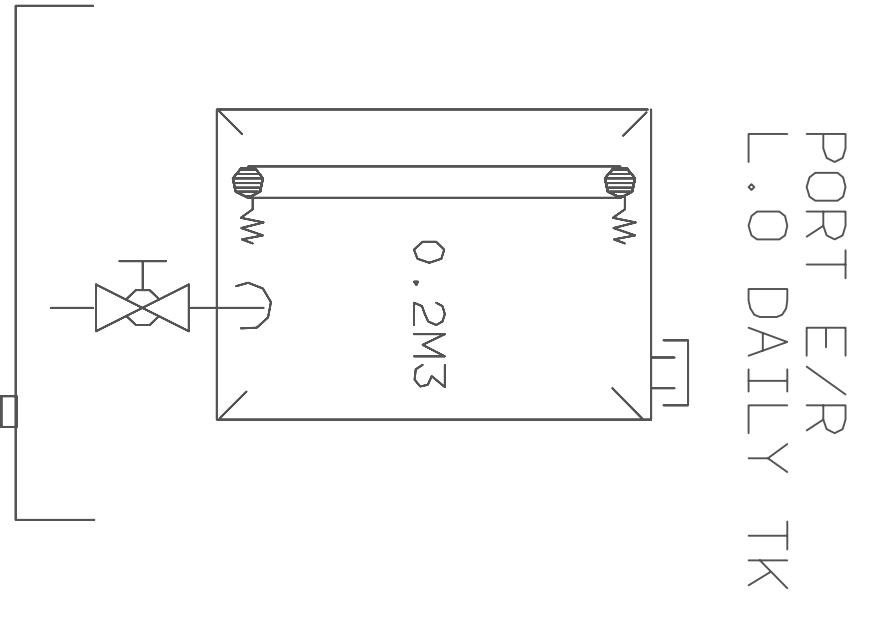
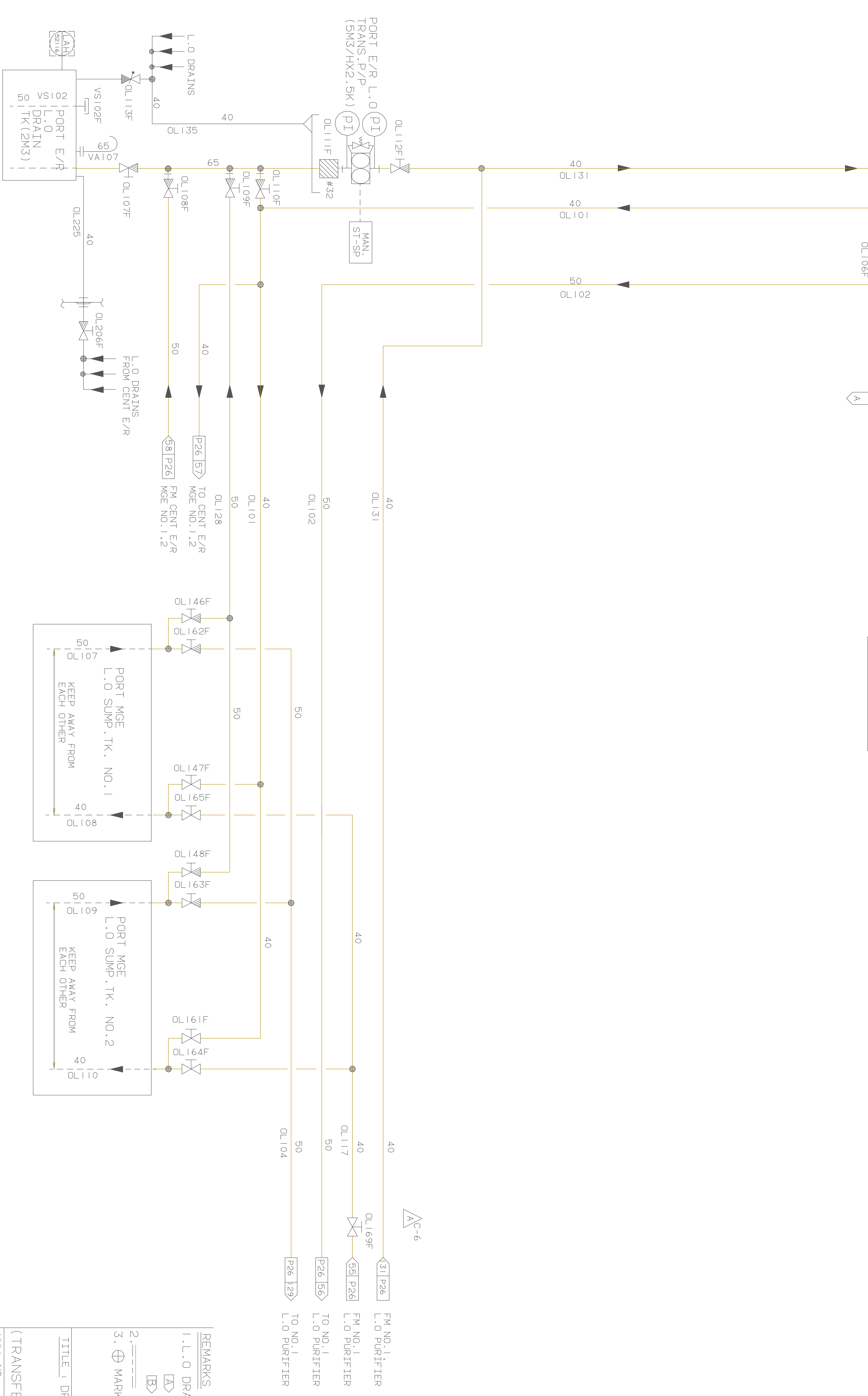


PORT E/R



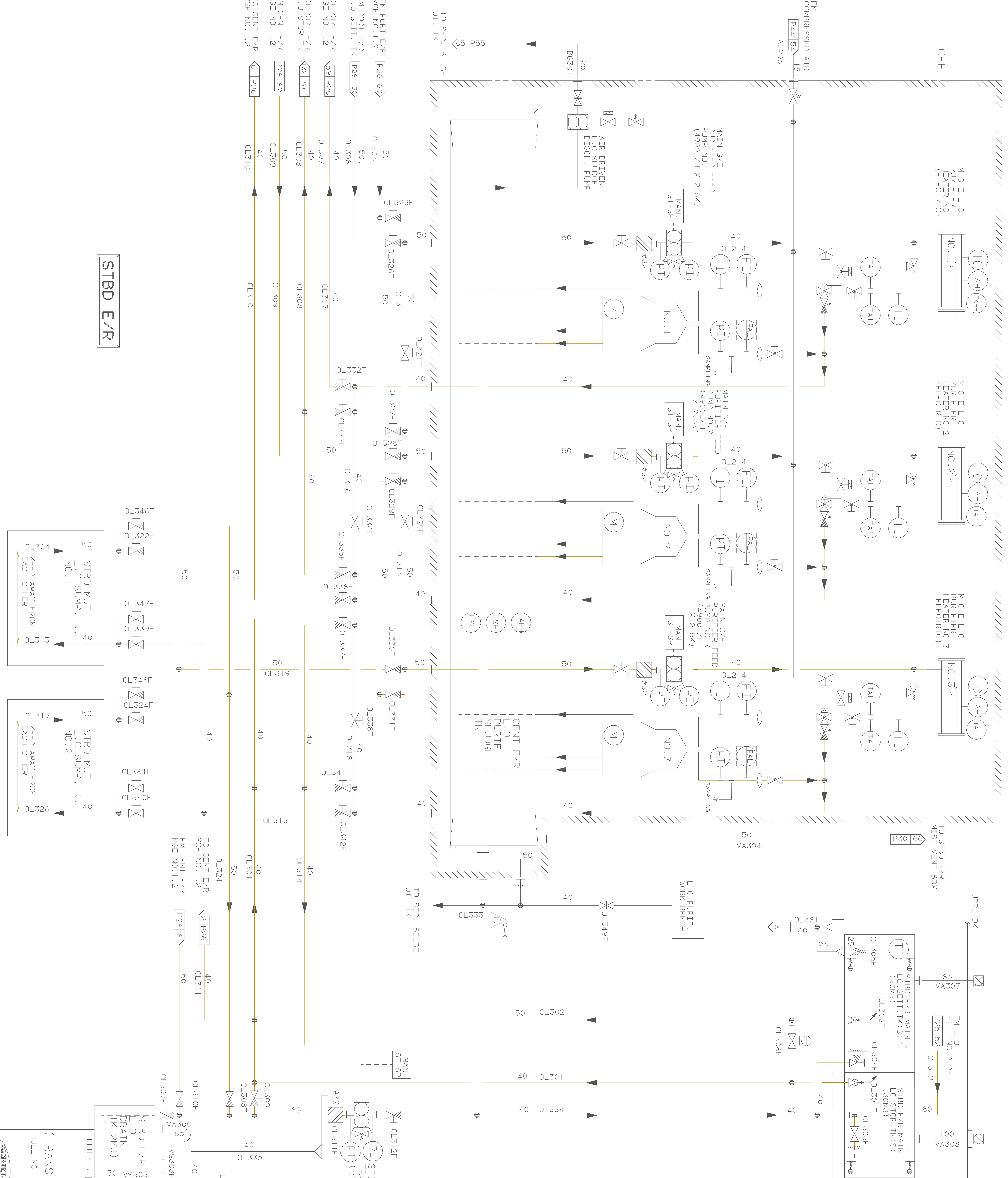
PIPE NO.
VA105 - 106
OL101-104 OL107-110 117,128
OL131-OL135 OL181,OL225
OL312

FM NO.1 PURIFIER
 L.O PURIFIER
 TO NO.1
 L.O PURIFIER
 TO NO.1
 L.O PURIFIER

- REMARKS**
- L.O DRAINS TO BE LED AS BELOW:
 (A) : TO SEPARATED BILGE OIL TK
 (B) : TO L.O DRAIN TK
 - : WITH THERMAL INSULATION
 - ⊕ MARKED VALVES : LOCKED IN CLOSED POSITION.

TITLE : DRILLSHIP
 LUB. OIL SYSTEM
 (TRANSFER, PURIFYING FOR PORT E/R)

FULL NO. 1300
 DWG NO. MB101.30(1/8)



REMARKS

- L.O. DRAINS TO BE LED AS BELOW:
- TO SEPARATED BILGE OIL TK
- TO L.O. DRAIN TK
- WITH THERMAL INSULATION
- MARKED VALVES : LOCKED IN CLOSED POSITION.

STBD E/R L.O. DAILY TK

STBD E/R L.O. TRANS. P/P (5M3/HX2.5K)

STBD E/R L.O. DRAIN TKS (2M3)

PIPE NO.
AC205
BG301
VA304 - 308
VS303
OL301-317, 324, 326
OL381

L.O. DRAINS

VS303F

VS307F

VS313F

VS317F

VS323F

VS327F

VS331F

VS335F

VS339F

VS343F

VS347F

VS351F

VS355F

VS359F

VS363F

VS367F

VS371F

VS375F

VS379F

VS383F

VS387F

VS391F

VS395F

VS399F

VS403F

VS407F

VS411F

VS415F

VS419F

VS423F

VS427F

VS431F

VS435F

VS439F

VS443F

VS447F

VS451F

VS455F

VS459F

VS463F

VS467F

VS471F

VS475F

VS479F

VS483F

VS487F

VS491F

VS495F

VS499F

VS503F

VS507F

VS511F

VS515F

VS519F

VS523F

VS527F

VS531F

VS535F

VS539F

VS543F

VS547F

VS551F

VS555F

VS559F

VS563F

VS567F

VS571F

VS575F

VS579F

VS583F

VS587F

VS591F

VS595F

VS599F

VS603F

VS607F

VS611F

VS615F

VS619F

VS623F

VS627F

VS631F

VS635F

VS639F

VS643F

VS647F

VS651F

VS655F

VS659F

VS663F

VS667F

VS671F

VS675F

VS679F

VS683F

VS687F

VS691F

VS695F

VS699F

VS703F

VS707F

VS711F

VS715F

VS719F

VS723F

VS727F

VS731F

VS735F

VS739F

VS743F

VS747F

VS751F

VS755F

VS759F

VS763F

VS767F

VS771F

VS775F

VS779F

VS783F

VS787F

VS791F

VS795F

VS799F

VS803F

VS807F

VS811F

VS815F

VS819F

VS823F

VS827F

VS831F

VS835F

VS839F

VS843F

VS847F

VS851F

VS855F

VS859F

VS863F

VS867F

VS871F

VS875F

VS879F

VS883F

VS887F

VS891F

VS895F

VS899F

VS903F

VS907F

VS911F

VS915F

VS919F

VS923F

VS927F

VS931F

VS935F

VS939F

VS943F

VS947F

VS951F

VS955F

VS959F

VS963F

VS967F

VS971F

VS975F

VS979F

VS983F

VS987F

VS991F

VS995F

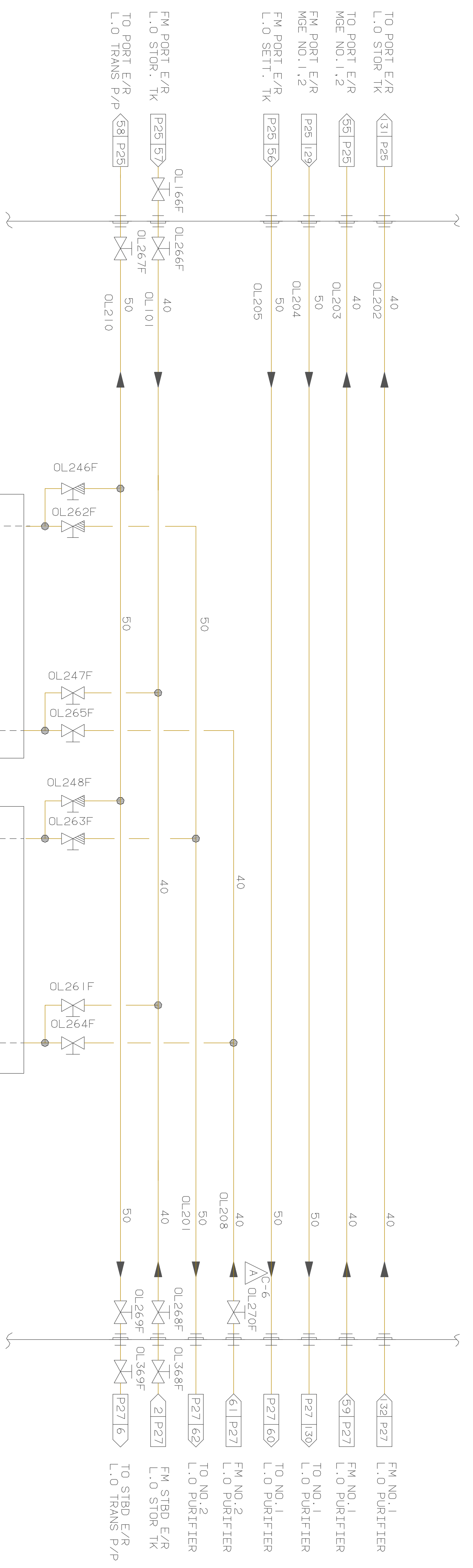
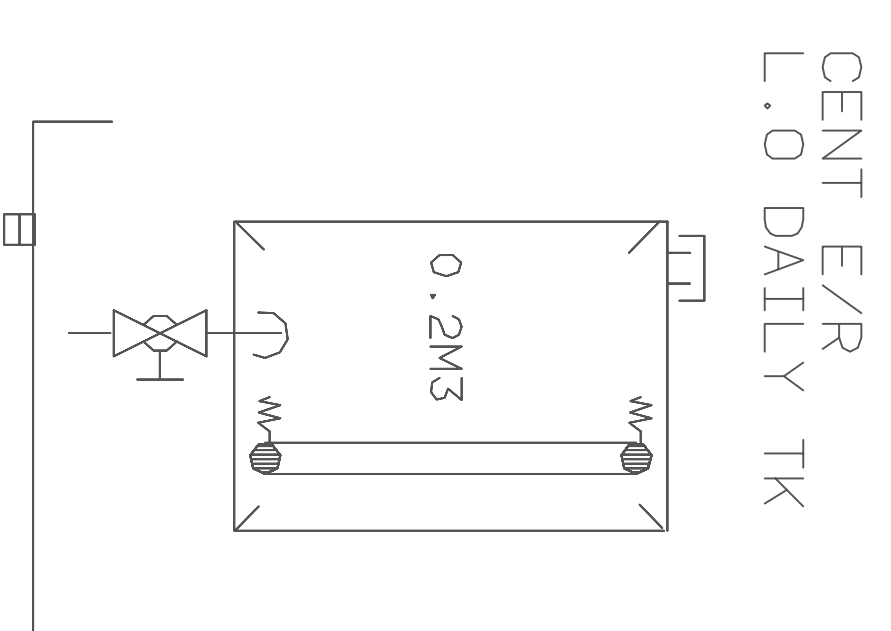
VS999F

STBD E/R L.O. SUMP TKS

NO. 1

NO. 2

CENT E/R



PIPE NO.
OL201 - 205, OL208
OL231 - 234

REMARKS

- L.O DRAINS TO BE LED AS BELOW:
 - [A]: TO SEPARATED BILGE OIL TK
 - [B]: TO L.O DRAIN TK
- : WITH THERMAL INSULATION
- ⊕ MARKED VALVES : LOCKED IN CLOSED POSITION.

TITLE : DRILLSHIP

LUB. OIL SYSTEM

(TRANSFER, PURIFYING FOR CENT E/R)

HULL NO.	DWG NO.
1300	MB101.30(2/8)