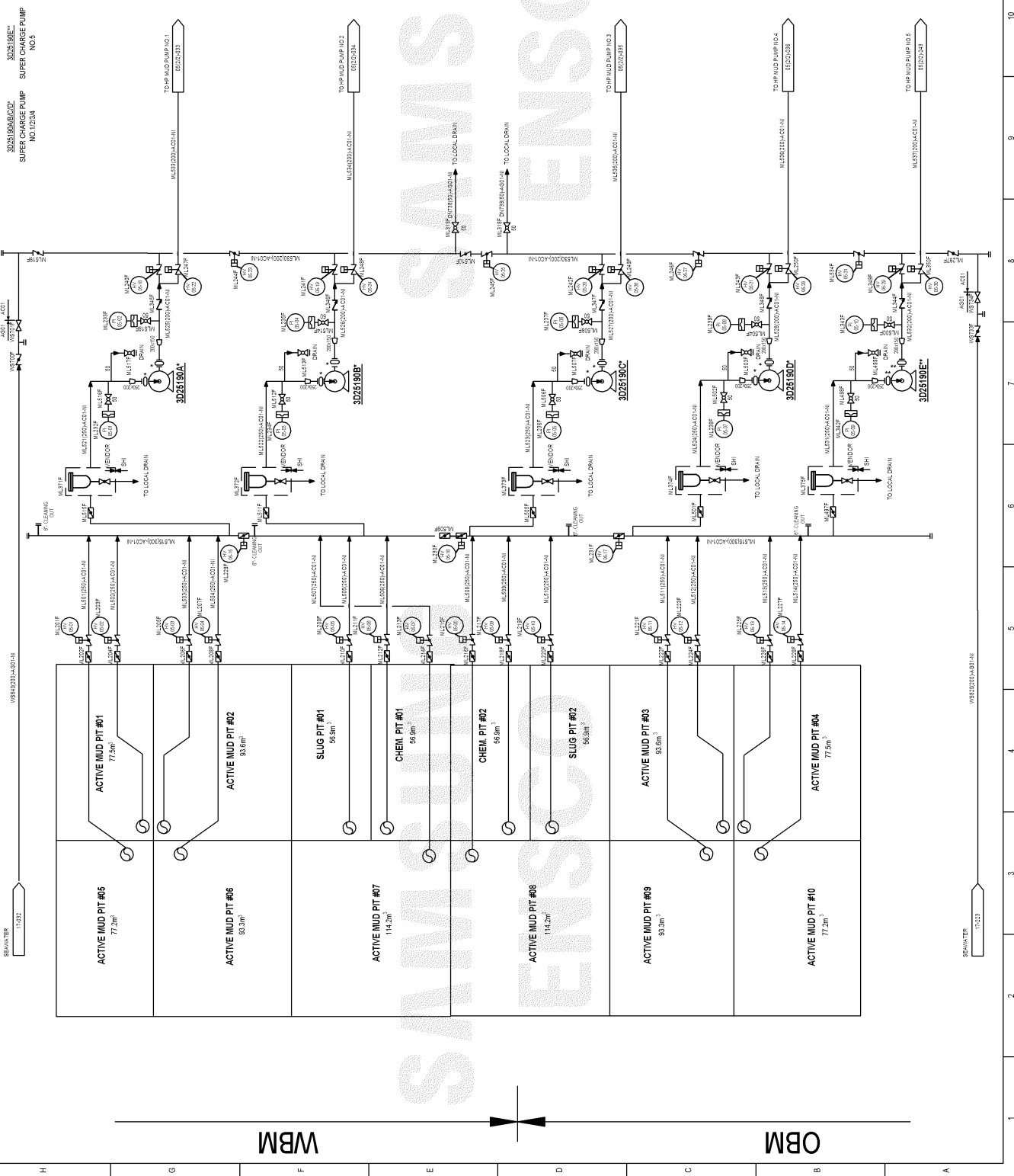
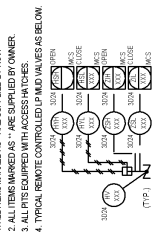


- NOTES:**
1. ALL ITEMS MARKED AS * ARE SUPPLIED BY NOV.
 2. ALL ITEMS MARKED AS ** ARE SUPPLIED BY OWNER.
 3. ALL ITEMS EQUIPPED WITH ACCESS PATCHES.
 4. TYPICAL REMOTE CONTROLLED PUMP VALUES ARE BELOW.



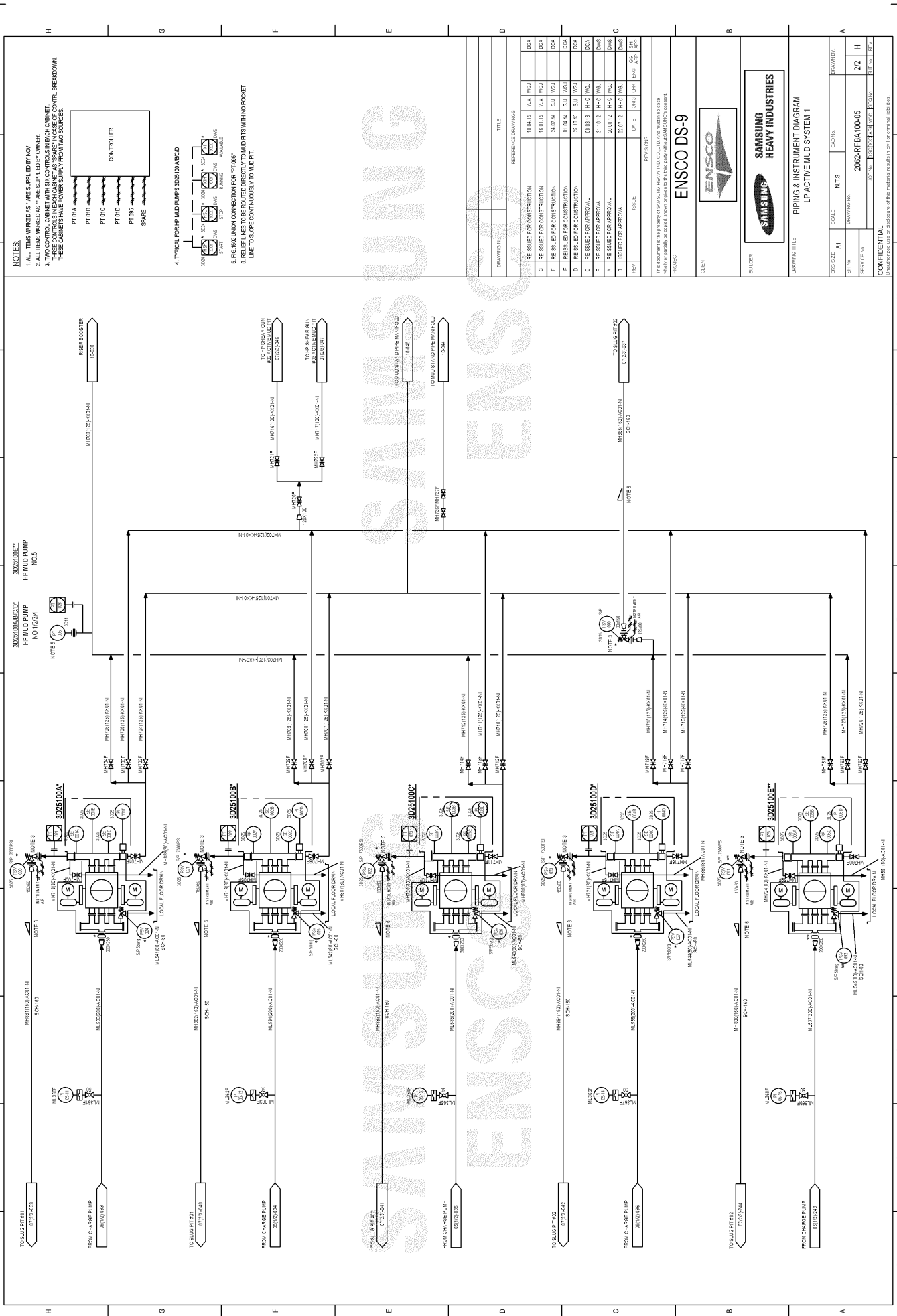
REV	DATE	ISSUE	REV	DATE	ISSUE
1	10/04/15	T/A	1	10/04/15	T/A
2	10/17/15	T/A	2	10/17/15	T/A
3	10/17/15	S/J	3	10/17/15	S/J
4	10/17/15	S/J	4	10/17/15	S/J
5	10/17/15	S/J	5	10/17/15	S/J
6	10/17/15	H/MC	6	10/17/15	H/MC
7	10/17/15	H/MC	7	10/17/15	H/MC
8	10/17/15	H/MC	8	10/17/15	H/MC
9	10/17/15	H/MC	9	10/17/15	H/MC
10	10/17/15	H/MC	10	10/17/15	H/MC
11	10/17/15	H/MC	11	10/17/15	H/MC
12	10/17/15	H/MC	12	10/17/15	H/MC
13	10/17/15	H/MC	13	10/17/15	H/MC
14	10/17/15	H/MC	14	10/17/15	H/MC
15	10/17/15	H/MC	15	10/17/15	H/MC
16	10/17/15	H/MC	16	10/17/15	H/MC
17	10/17/15	H/MC	17	10/17/15	H/MC
18	10/17/15	H/MC	18	10/17/15	H/MC
19	10/17/15	H/MC	19	10/17/15	H/MC
20	10/17/15	H/MC	20	10/17/15	H/MC

PROJECT: ENSCO DS-9
 CLIENT: ENSCO
 DRAWING TITLE: PIPING & INSTRUMENT DIAGRAM LP ACTIVE MUD SYSTEM 1
 SHEET NO: 1/2 H

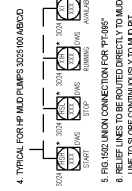
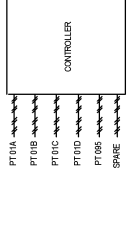
SEAWATER 15-232
 SEAWATER 15-232

WBM
 OBM

CONFIDENTIAL : Unauthorized use or disclosure of this material results in civil or criminal liabilities.



- NOTES:**
1. ALL ITEMS MARKED AS * ARE SUPPLIED BY NOV.
 2. ALL ITEMS MARKED AS ** ARE SUPPLIED BY OWNER.
 3. TWO CONTROL CABINET WITH SIX CONTROLS IN EACH CABINET. THESE CABINETS HAVE POWER SUPPLY FROM TWO SOURCES.



4. TYPICAL FOR HP MLD PUMPS 30251000 ABCDC
5. 600 MM ANCHOR CONNECTION FOR PT100C*
6. RELIEF LINES TO BE ROUTED DIRECTLY TO MUD PIT WITH NO POCKET LINE TO SLOPE CONTINUOUSLY TO MUD PIT.

SAMSUNG
ENSCO

REV	ISSUE	DATE	CHK	BY	APP
1	ISSUED FOR APPROVAL	02.07.12	HMC	NSJ	NSJ
2	REVISED FOR APPROVAL	01.11.12	HMC	NSJ	NSJ
3	REVISED FOR APPROVAL	01.11.12	HMC	NSJ	NSJ
4	REVISED FOR APPROVAL	02.07.12	HMC	NSJ	NSJ
5	REVISED FOR APPROVAL	02.07.12	HMC	NSJ	NSJ
6	REVISED FOR APPROVAL	02.07.12	HMC	NSJ	NSJ
7	REVISED FOR APPROVAL	02.07.12	HMC	NSJ	NSJ
8	REVISED FOR APPROVAL	02.07.12	HMC	NSJ	NSJ
9	REVISED FOR APPROVAL	02.07.12	HMC	NSJ	NSJ
10	REVISED FOR APPROVAL	02.07.12	HMC	NSJ	NSJ
11	REVISED FOR APPROVAL	02.07.12	HMC	NSJ	NSJ
12	REVISED FOR APPROVAL	02.07.12	HMC	NSJ	NSJ

REFERENCES:

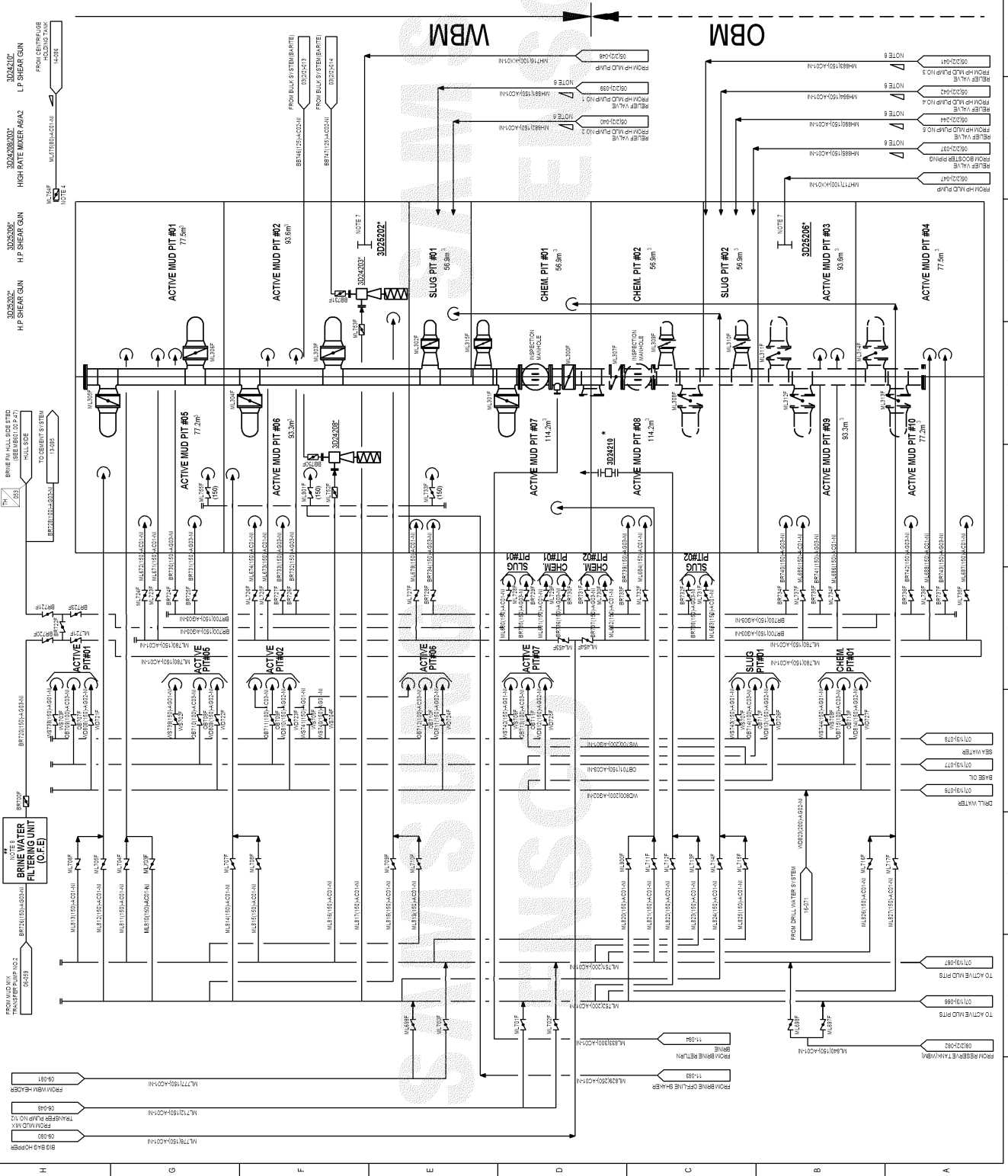
NO.	DESCRIPTION	DATE	BY	APP
1	DESIGNED FOR CONSTRUCTION	04.04.10	TJA	WGL
2	DESIGNED FOR CONSTRUCTION	04.07.10	BJJ	WGL
3	DESIGNED FOR CONSTRUCTION	05.04.10	BJJ	WGL
4	DESIGNED FOR CONSTRUCTION	05.04.10	BJJ	WGL
5	DESIGNED FOR CONSTRUCTION	05.04.10	BJJ	WGL
6	DESIGNED FOR CONSTRUCTION	05.04.10	BJJ	WGL
7	DESIGNED FOR CONSTRUCTION	05.04.10	BJJ	WGL
8	DESIGNED FOR CONSTRUCTION	05.04.10	BJJ	WGL
9	DESIGNED FOR CONSTRUCTION	05.04.10	BJJ	WGL
10	DESIGNED FOR CONSTRUCTION	05.04.10	BJJ	WGL
11	DESIGNED FOR CONSTRUCTION	05.04.10	BJJ	WGL
12	DESIGNED FOR CONSTRUCTION	05.04.10	BJJ	WGL

CLIENT: ENSCO DS-9

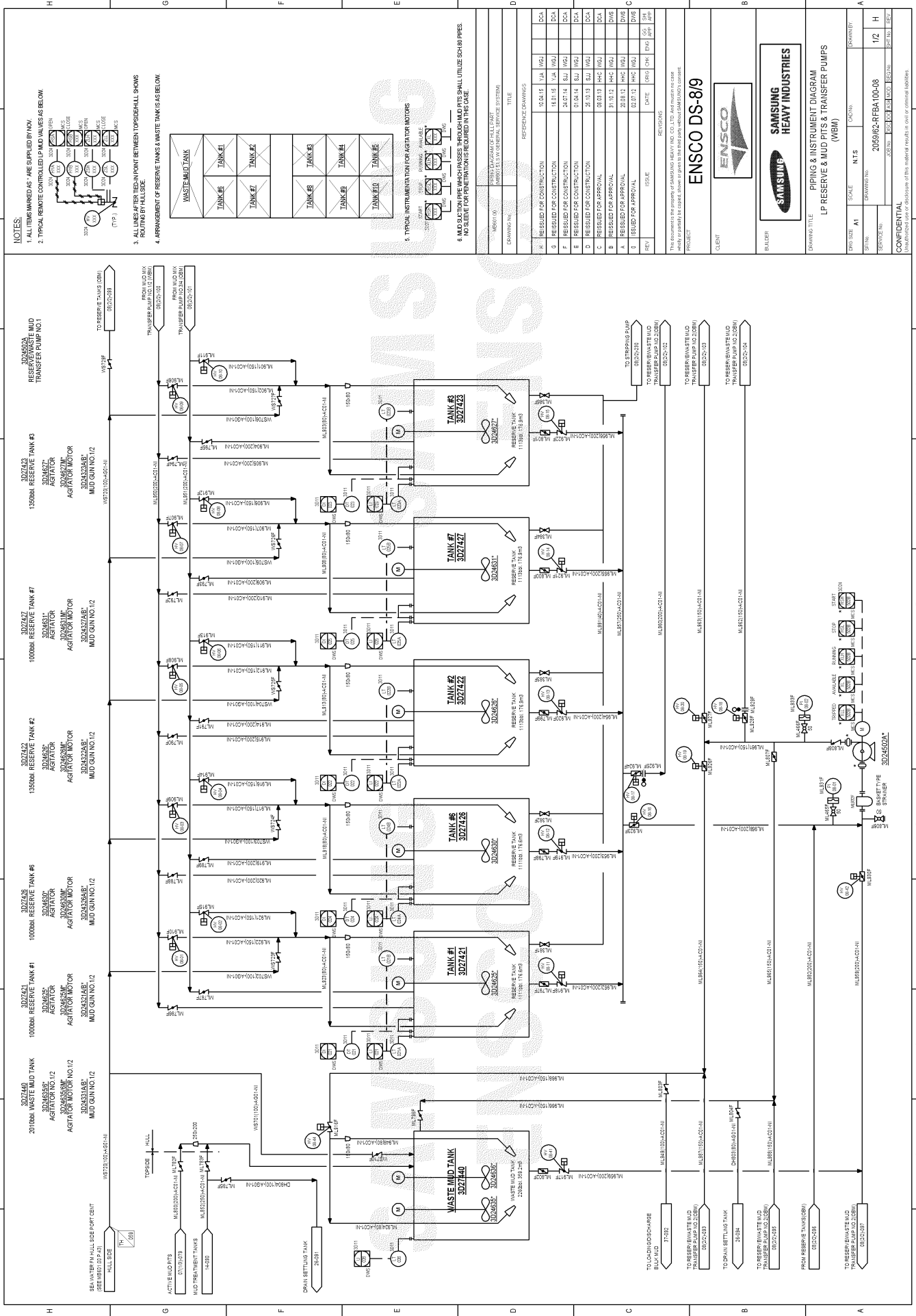
PROJECT: The documents are the property of SAMSUNG HEAVY IND. CO., LTD. And must not be copied, altered or used in any way without the prior written consent of SAMSUNG HEAVY IND. CO., LTD.

CONFIDENTIAL : Unauthorized use or disclosure of this material results in civil or criminal liabilities.

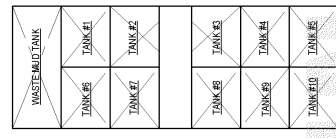
DRAWING TITLE		ENSCO DS-9																																								
CLIENT		ENSCO																																								
PROJECT		SAMSUNG HEAVY INDUSTRIES LP ACTIVE MUD SYSTEM 3(BWB)																																								
DRAWING NO.		2062-RPBA100-07																																								
DATE		2012.07.12																																								
ISSUE		ISSUE																																								
REVISIONS		<table border="1"> <tr><th>NO.</th><th>DATE</th><th>DESCRIPTION</th></tr> <tr><td>1</td><td>2012.07.12</td><td>ISSUE</td></tr> <tr><td>2</td><td>2012.07.12</td><td>ISSUE</td></tr> <tr><td>3</td><td>2012.07.12</td><td>ISSUE</td></tr> <tr><td>4</td><td>2012.07.12</td><td>ISSUE</td></tr> <tr><td>5</td><td>2012.07.12</td><td>ISSUE</td></tr> <tr><td>6</td><td>2012.07.12</td><td>ISSUE</td></tr> <tr><td>7</td><td>2012.07.12</td><td>ISSUE</td></tr> <tr><td>8</td><td>2012.07.12</td><td>ISSUE</td></tr> <tr><td>9</td><td>2012.07.12</td><td>ISSUE</td></tr> <tr><td>10</td><td>2012.07.12</td><td>ISSUE</td></tr> <tr><td>11</td><td>2012.07.12</td><td>ISSUE</td></tr> <tr><td>12</td><td>2012.07.12</td><td>ISSUE</td></tr> </table>		NO.	DATE	DESCRIPTION	1	2012.07.12	ISSUE	2	2012.07.12	ISSUE	3	2012.07.12	ISSUE	4	2012.07.12	ISSUE	5	2012.07.12	ISSUE	6	2012.07.12	ISSUE	7	2012.07.12	ISSUE	8	2012.07.12	ISSUE	9	2012.07.12	ISSUE	10	2012.07.12	ISSUE	11	2012.07.12	ISSUE	12	2012.07.12	ISSUE
NO.	DATE	DESCRIPTION																																								
1	2012.07.12	ISSUE																																								
2	2012.07.12	ISSUE																																								
3	2012.07.12	ISSUE																																								
4	2012.07.12	ISSUE																																								
5	2012.07.12	ISSUE																																								
6	2012.07.12	ISSUE																																								
7	2012.07.12	ISSUE																																								
8	2012.07.12	ISSUE																																								
9	2012.07.12	ISSUE																																								
10	2012.07.12	ISSUE																																								
11	2012.07.12	ISSUE																																								
12	2012.07.12	ISSUE																																								
DRAWING NO.		2062-RPBA100-07																																								
DATE		2012.07.12																																								
ISSUE		ISSUE																																								
REVISIONS		<table border="1"> <tr><th>NO.</th><th>DATE</th><th>DESCRIPTION</th></tr> <tr><td>1</td><td>2012.07.12</td><td>ISSUE</td></tr> <tr><td>2</td><td>2012.07.12</td><td>ISSUE</td></tr> <tr><td>3</td><td>2012.07.12</td><td>ISSUE</td></tr> <tr><td>4</td><td>2012.07.12</td><td>ISSUE</td></tr> <tr><td>5</td><td>2012.07.12</td><td>ISSUE</td></tr> <tr><td>6</td><td>2012.07.12</td><td>ISSUE</td></tr> <tr><td>7</td><td>2012.07.12</td><td>ISSUE</td></tr> <tr><td>8</td><td>2012.07.12</td><td>ISSUE</td></tr> <tr><td>9</td><td>2012.07.12</td><td>ISSUE</td></tr> <tr><td>10</td><td>2012.07.12</td><td>ISSUE</td></tr> <tr><td>11</td><td>2012.07.12</td><td>ISSUE</td></tr> <tr><td>12</td><td>2012.07.12</td><td>ISSUE</td></tr> </table>		NO.	DATE	DESCRIPTION	1	2012.07.12	ISSUE	2	2012.07.12	ISSUE	3	2012.07.12	ISSUE	4	2012.07.12	ISSUE	5	2012.07.12	ISSUE	6	2012.07.12	ISSUE	7	2012.07.12	ISSUE	8	2012.07.12	ISSUE	9	2012.07.12	ISSUE	10	2012.07.12	ISSUE	11	2012.07.12	ISSUE	12	2012.07.12	ISSUE
NO.	DATE	DESCRIPTION																																								
1	2012.07.12	ISSUE																																								
2	2012.07.12	ISSUE																																								
3	2012.07.12	ISSUE																																								
4	2012.07.12	ISSUE																																								
5	2012.07.12	ISSUE																																								
6	2012.07.12	ISSUE																																								
7	2012.07.12	ISSUE																																								
8	2012.07.12	ISSUE																																								
9	2012.07.12	ISSUE																																								
10	2012.07.12	ISSUE																																								
11	2012.07.12	ISSUE																																								
12	2012.07.12	ISSUE																																								



NOTES:
 1. ALL INSTRUMENTS AS SHOWN ARE TO BE PROVIDED BY THE CLIENT.
 2. ALL INSTRUMENTS TO BE PROVIDED BY THE CLIENT.
 3. COMPENSATION OF ACTIVATED PIPING IS BELOW.
 4. HOSE CONNECTION TO BE LOCATED CENTRALLY AT PITS FOR DISTRIBUTING BACK TO ANY PIT THROUGH A SLIGHTLY OPENED HATCH.
 5. RELIEF LINES TO BE ROUTED DIRECTLY TO MUD PITS WITH NO POCKET LINE TO SLOPE CONTINUOUSLY TO MUD PIT.
 6. BELOW THE P-SHEAR OPERATING DOUBLE RATE TO BE APPLIED. THE DISTANCE FROM THE P-SHEAR OPERATING DOUBLE RATE TO THE MUD PIT AND THE POSITION TO BE SHOWN AS SHOWN.
 7. FUTURE INSTALLATION BY OWNER.



- NOTES:**
1. ALL ITEMS MARKED AS * ARE SUPPLIED BY NOV.
 2. TYPICAL REMOTE CONTROLLED P&ID VALUES AS BELOW.
 3. ALL LINES AFTER INLET POINT BETWEEN TOPSIDE/HULL SHOWS ROUTING BY HULLSIDE.
 4. ARRANGEMENT OF RESERVE TANKS & WASTE TANKS AS BELOW.
 5. TYPICAL INSTRUMENTATION FOR AGITATOR MOTORS.
 6. ALL INSTRUMENTATION SHALL BE SUPPLIED BY NOV. INSTRUMENTS SHALL INCLUDE SCHRIB PIPES. NO ALTERNATE INSTRUMENTATIONS REQUIRED IN THE CASE.



REV	ISSUE	DATE	ISSUED BY	CHK'D BY	APP'D BY
1	ISSUED FOR APPROVAL	02/27/12	PHM	NOG	PHM
2	ISSUED FOR APPROVAL	02/27/12	PHM	NOG	PHM
3	ISSUED FOR APPROVAL	02/27/12	PHM	NOG	PHM
4	ISSUED FOR APPROVAL	02/27/12	PHM	NOG	PHM
5	ISSUED FOR APPROVAL	02/27/12	PHM	NOG	PHM
6	ISSUED FOR APPROVAL	02/27/12	PHM	NOG	PHM
7	ISSUED FOR APPROVAL	02/27/12	PHM	NOG	PHM
8	ISSUED FOR APPROVAL	02/27/12	PHM	NOG	PHM
9	ISSUED FOR APPROVAL	02/27/12	PHM	NOG	PHM
10	ISSUED FOR APPROVAL	02/27/12	PHM	NOG	PHM
11	ISSUED FOR APPROVAL	02/27/12	PHM	NOG	PHM
12	ISSUED FOR APPROVAL	02/27/12	PHM	NOG	PHM

REV	ISSUE	DATE	ISSUED BY	CHK'D BY	APP'D BY
1	ISSUED FOR CONSTRUCTION	04/14/15	TJA	NOG	DCM
2	ISSUED FOR CONSTRUCTION	04/14/15	TJA	NOG	DCM
3	ISSUED FOR CONSTRUCTION	04/14/15	TJA	NOG	DCM
4	ISSUED FOR CONSTRUCTION	04/14/15	TJA	NOG	DCM
5	ISSUED FOR CONSTRUCTION	04/14/15	TJA	NOG	DCM
6	ISSUED FOR CONSTRUCTION	04/14/15	TJA	NOG	DCM
7	ISSUED FOR CONSTRUCTION	04/14/15	TJA	NOG	DCM
8	ISSUED FOR CONSTRUCTION	04/14/15	TJA	NOG	DCM
9	ISSUED FOR CONSTRUCTION	04/14/15	TJA	NOG	DCM
10	ISSUED FOR CONSTRUCTION	04/14/15	TJA	NOG	DCM
11	ISSUED FOR CONSTRUCTION	04/14/15	TJA	NOG	DCM
12	ISSUED FOR CONSTRUCTION	04/14/15	TJA	NOG	DCM

REV	ISSUE	DATE	ISSUED BY	CHK'D BY	APP'D BY
1	ISSUED FOR CONSTRUCTION	04/14/15	TJA	NOG	DCM
2	ISSUED FOR CONSTRUCTION	04/14/15	TJA	NOG	DCM
3	ISSUED FOR CONSTRUCTION	04/14/15	TJA	NOG	DCM
4	ISSUED FOR CONSTRUCTION	04/14/15	TJA	NOG	DCM
5	ISSUED FOR CONSTRUCTION	04/14/15	TJA	NOG	DCM
6	ISSUED FOR CONSTRUCTION	04/14/15	TJA	NOG	DCM
7	ISSUED FOR CONSTRUCTION	04/14/15	TJA	NOG	DCM
8	ISSUED FOR CONSTRUCTION	04/14/15	TJA	NOG	DCM
9	ISSUED FOR CONSTRUCTION	04/14/15	TJA	NOG	DCM
10	ISSUED FOR CONSTRUCTION	04/14/15	TJA	NOG	DCM
11	ISSUED FOR CONSTRUCTION	04/14/15	TJA	NOG	DCM
12	ISSUED FOR CONSTRUCTION	04/14/15	TJA	NOG	DCM

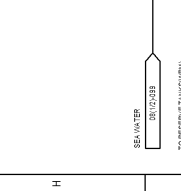
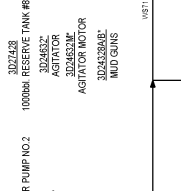
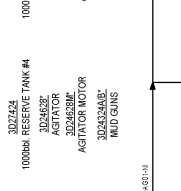
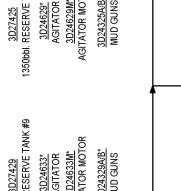
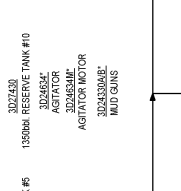
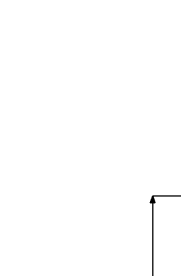
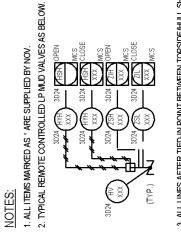
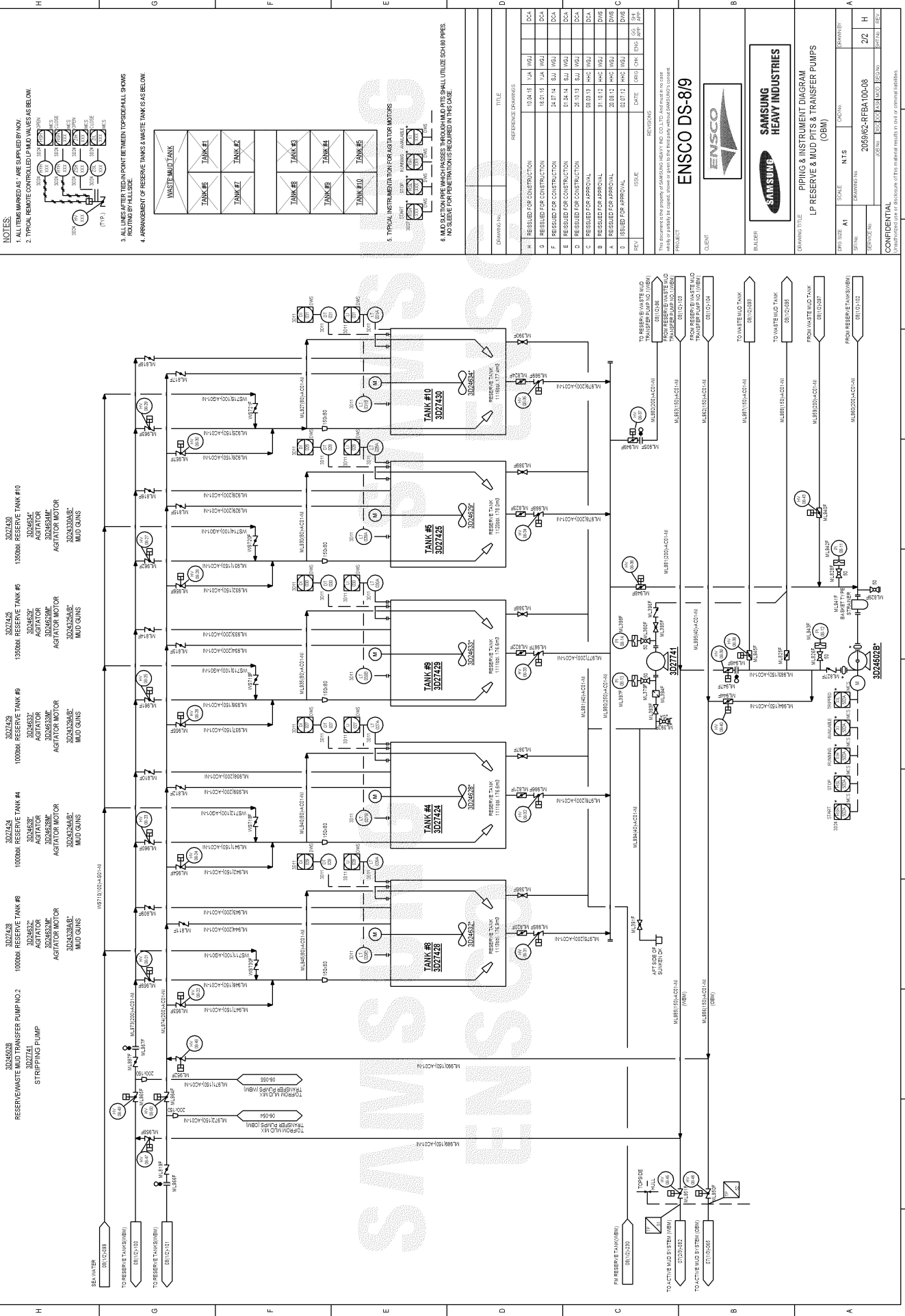
ENSCO DS-89

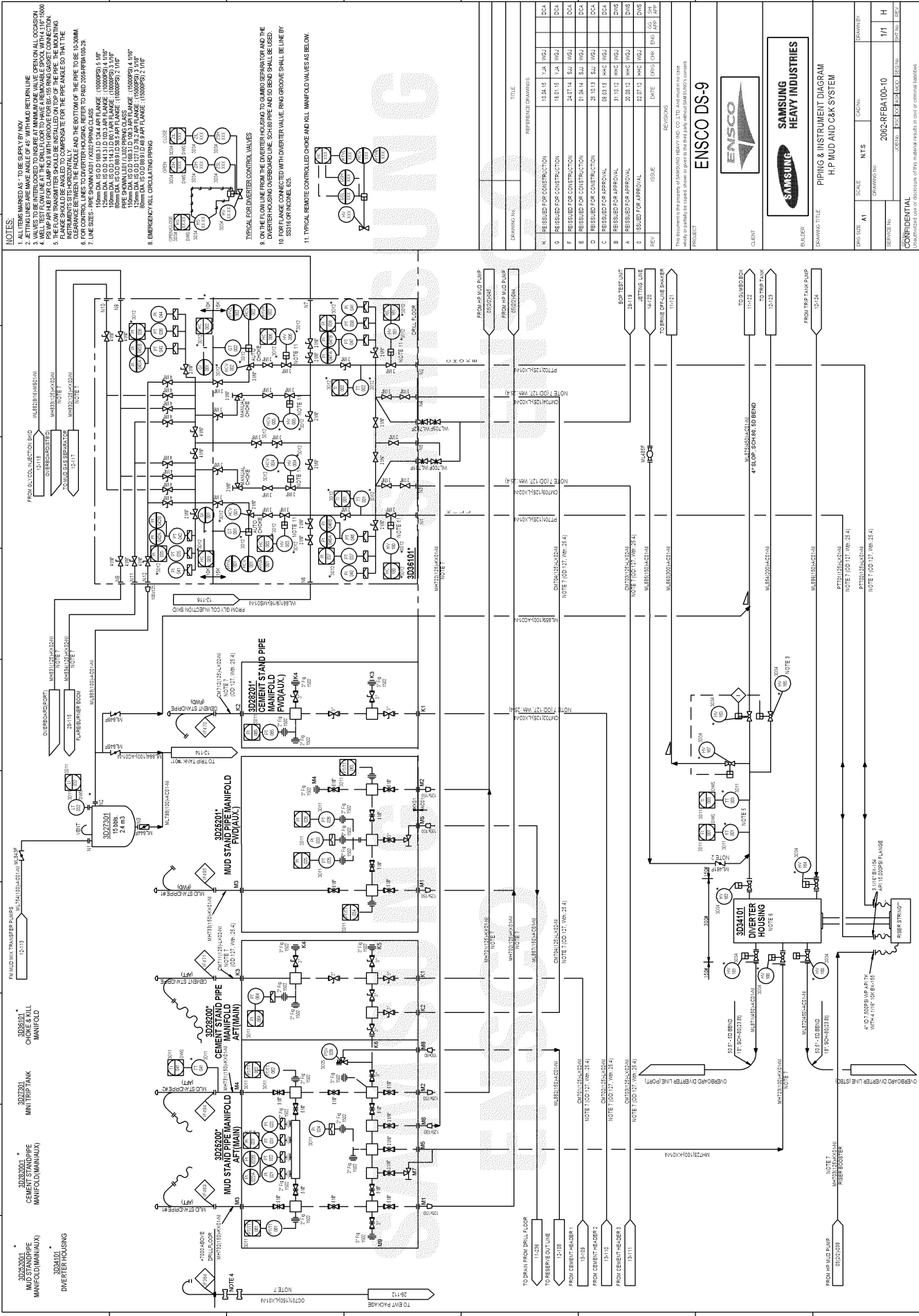


PIPING & INSTRUMENT DIAGRAM
LP RESERVE & MUD PITS & TRANSFER PUMPS
(WBM)

PROJECT	2059692-RFBA-100-08
CLIENT	SAMSUNG HEAVY INDUSTRIES
SCALE	1/2" = 1'-0"
DATE	02/27/12
ISSUED BY	PHM
CHK'D BY	NOG
APP'D BY	PHM

CONFIDENTIAL : Unauthorized use or disclosure of this material results in civil or criminal liabilities.





- NOTES:**
1. ALL VALVES ARE TO BE SPERRY SWAY.
 2. ALL VALVES ARE TO BE INTERLOCKED TO INSURE AT MINIMUM ONE VALVE IS OPEN ON ALL OCCASION.
 3. ALL VALVES ARE TO BE INTERLOCKED TO INSURE AT MINIMUM ONE VALVE IS OPEN ON ALL OCCASION.
 4. ALL VALVES ARE TO BE INTERLOCKED TO INSURE AT MINIMUM ONE VALVE IS OPEN ON ALL OCCASION.
 5. ALL VALVES ARE TO BE INTERLOCKED TO INSURE AT MINIMUM ONE VALVE IS OPEN ON ALL OCCASION.
 6. ALL VALVES ARE TO BE INTERLOCKED TO INSURE AT MINIMUM ONE VALVE IS OPEN ON ALL OCCASION.
 7. ALL VALVES ARE TO BE INTERLOCKED TO INSURE AT MINIMUM ONE VALVE IS OPEN ON ALL OCCASION.
 8. ALL VALVES ARE TO BE INTERLOCKED TO INSURE AT MINIMUM ONE VALVE IS OPEN ON ALL OCCASION.
 9. ALL VALVES ARE TO BE INTERLOCKED TO INSURE AT MINIMUM ONE VALVE IS OPEN ON ALL OCCASION.
 10. ALL VALVES ARE TO BE INTERLOCKED TO INSURE AT MINIMUM ONE VALVE IS OPEN ON ALL OCCASION.
 11. ALL VALVES ARE TO BE INTERLOCKED TO INSURE AT MINIMUM ONE VALVE IS OPEN ON ALL OCCASION.

TYPICAL FOR DIVERTER CONTROL VALUES

ON THE FOLLOWING FROM THE DIVERTER HOUSING TO C&K OPERATOR AND THE DIVERTER HOUSING OVERBOARD LINE, 2" SCH 40 PIPE AND 2" BEND SHALL BE USED.

FOR FLANGE CONNECTED WITH OVERTR VALVE, 2" SCH 40 PIPE AND 2" BEND SHALL BE USED.

FOR FLANGE CONNECTED WITH OVERTR VALVE, 2" SCH 40 PIPE AND 2" BEND SHALL BE USED.

FOR FLANGE CONNECTED WITH OVERTR VALVE, 2" SCH 40 PIPE AND 2" BEND SHALL BE USED.

FOR FLANGE CONNECTED WITH OVERTR VALVE, 2" SCH 40 PIPE AND 2" BEND SHALL BE USED.

FOR FLANGE CONNECTED WITH OVERTR VALVE, 2" SCH 40 PIPE AND 2" BEND SHALL BE USED.

FOR FLANGE CONNECTED WITH OVERTR VALVE, 2" SCH 40 PIPE AND 2" BEND SHALL BE USED.

FOR FLANGE CONNECTED WITH OVERTR VALVE, 2" SCH 40 PIPE AND 2" BEND SHALL BE USED.

FOR FLANGE CONNECTED WITH OVERTR VALVE, 2" SCH 40 PIPE AND 2" BEND SHALL BE USED.

FOR FLANGE CONNECTED WITH OVERTR VALVE, 2" SCH 40 PIPE AND 2" BEND SHALL BE USED.

FOR FLANGE CONNECTED WITH OVERTR VALVE, 2" SCH 40 PIPE AND 2" BEND SHALL BE USED.

FOR FLANGE CONNECTED WITH OVERTR VALVE, 2" SCH 40 PIPE AND 2" BEND SHALL BE USED.

FOR FLANGE CONNECTED WITH OVERTR VALVE, 2" SCH 40 PIPE AND 2" BEND SHALL BE USED.

FOR FLANGE CONNECTED WITH OVERTR VALVE, 2" SCH 40 PIPE AND 2" BEND SHALL BE USED.

FOR FLANGE CONNECTED WITH OVERTR VALVE, 2" SCH 40 PIPE AND 2" BEND SHALL BE USED.

FOR FLANGE CONNECTED WITH OVERTR VALVE, 2" SCH 40 PIPE AND 2" BEND SHALL BE USED.

FOR FLANGE CONNECTED WITH OVERTR VALVE, 2" SCH 40 PIPE AND 2" BEND SHALL BE USED.

FOR FLANGE CONNECTED WITH OVERTR VALVE, 2" SCH 40 PIPE AND 2" BEND SHALL BE USED.

FOR FLANGE CONNECTED WITH OVERTR VALVE, 2" SCH 40 PIPE AND 2" BEND SHALL BE USED.

FOR FLANGE CONNECTED WITH OVERTR VALVE, 2" SCH 40 PIPE AND 2" BEND SHALL BE USED.

FOR FLANGE CONNECTED WITH OVERTR VALVE, 2" SCH 40 PIPE AND 2" BEND SHALL BE USED.

FOR FLANGE CONNECTED WITH OVERTR VALVE, 2" SCH 40 PIPE AND 2" BEND SHALL BE USED.

FOR FLANGE CONNECTED WITH OVERTR VALVE, 2" SCH 40 PIPE AND 2" BEND SHALL BE USED.

FOR FLANGE CONNECTED WITH OVERTR VALVE, 2" SCH 40 PIPE AND 2" BEND SHALL BE USED.

FOR FLANGE CONNECTED WITH OVERTR VALVE, 2" SCH 40 PIPE AND 2" BEND SHALL BE USED.

FOR FLANGE CONNECTED WITH OVERTR VALVE, 2" SCH 40 PIPE AND 2" BEND SHALL BE USED.

FOR FLANGE CONNECTED WITH OVERTR VALVE, 2" SCH 40 PIPE AND 2" BEND SHALL BE USED.

FOR FLANGE CONNECTED WITH OVERTR VALVE, 2" SCH 40 PIPE AND 2" BEND SHALL BE USED.

FOR FLANGE CONNECTED WITH OVERTR VALVE, 2" SCH 40 PIPE AND 2" BEND SHALL BE USED.

FOR FLANGE CONNECTED WITH OVERTR VALVE, 2" SCH 40 PIPE AND 2" BEND SHALL BE USED.

FOR FLANGE CONNECTED WITH OVERTR VALVE, 2" SCH 40 PIPE AND 2" BEND SHALL BE USED.

FOR FLANGE CONNECTED WITH OVERTR VALVE, 2" SCH 40 PIPE AND 2" BEND SHALL BE USED.

FOR FLANGE CONNECTED WITH OVERTR VALVE, 2" SCH 40 PIPE AND 2" BEND SHALL BE USED.

FOR FLANGE CONNECTED WITH OVERTR VALVE, 2" SCH 40 PIPE AND 2" BEND SHALL BE USED.

FOR FLANGE CONNECTED WITH OVERTR VALVE, 2" SCH 40 PIPE AND 2" BEND SHALL BE USED.

FOR FLANGE CONNECTED WITH OVERTR VALVE, 2" SCH 40 PIPE AND 2" BEND SHALL BE USED.

FOR FLANGE CONNECTED WITH OVERTR VALVE, 2" SCH 40 PIPE AND 2" BEND SHALL BE USED.

FOR FLANGE CONNECTED WITH OVERTR VALVE, 2" SCH 40 PIPE AND 2" BEND SHALL BE USED.

ENSCO DS-9

PROJECT: ENSCO DS-9

CLIENT: SAMSUNG HEAVY INDUSTRIES

BLAUER

DRAWING TITLE: PIPING & INSTRUMENT DIAGRAM H.P. MUD AND C&K SYSTEM

SPR. NO.	SCALE	NTS	CONTR.	DRAWN BY	CHECKED BY
A1					

DATE: 2002-08-10

ISSUE: 1

REVISIONS:

NO.	DATE	BY	CHK	APP	DESCRIPTION
1					

REFERENCE DRAWINGS:

NO.	DESCRIPTION
1	ENSCO DS-9

PROJECT: ENSCO DS-9

CLIENT: SAMSUNG HEAVY INDUSTRIES

BLAUER

DRAWING TITLE: PIPING & INSTRUMENT DIAGRAM H.P. MUD AND C&K SYSTEM

SPR. NO.	SCALE	NTS	CONTR.	DRAWN BY	CHECKED BY
A1					

DATE: 2002-08-10

ISSUE: 1

REVISIONS:

NO.	DATE	BY	CHK	APP	DESCRIPTION
1					

REFERENCE DRAWINGS:

NO.	DESCRIPTION
1	ENSCO DS-9

PROJECT: ENSCO DS-9

CLIENT: SAMSUNG HEAVY INDUSTRIES

BLAUER

DRAWING TITLE: PIPING & INSTRUMENT DIAGRAM H.P. MUD AND C&K SYSTEM

SPR. NO.	SCALE	NTS	CONTR.	DRAWN BY	CHECKED BY
A1					

DATE: 2002-08-10

ISSUE: 1

REVISIONS:

NO.	DATE	BY	CHK	APP	DESCRIPTION
1					

REFERENCE DRAWINGS:

NO.	DESCRIPTION
1	ENSCO DS-9

PROJECT: ENSCO DS-9

CLIENT: SAMSUNG HEAVY INDUSTRIES

BLAUER

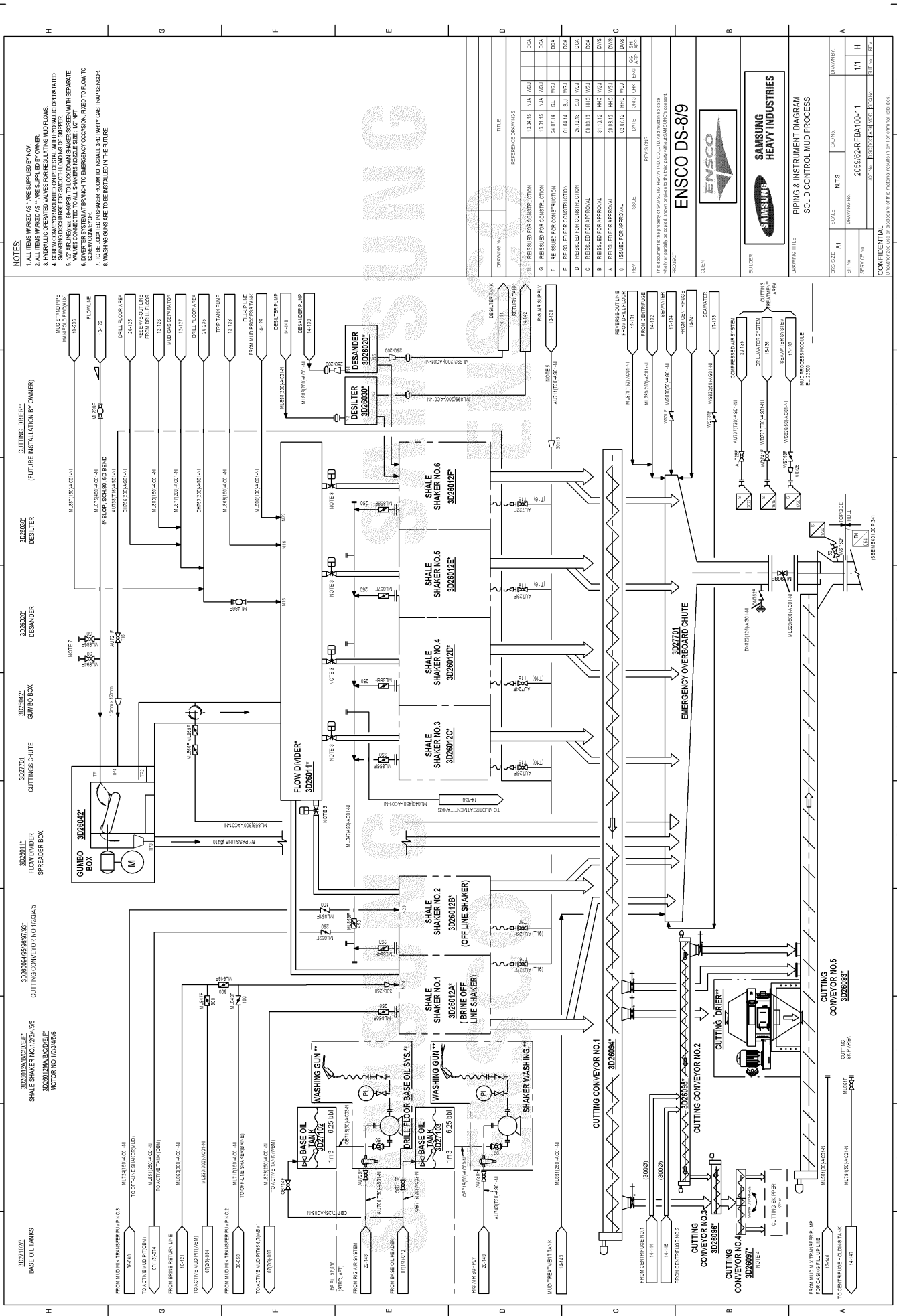
DRAWING TITLE: PIPING & INSTRUMENT DIAGRAM H.P. MUD AND C&K SYSTEM

SPR. NO.	SCALE	NTS	CONTR.	DRAWN BY	CHECKED BY
A1					

DATE: 2002-08-10

ISSUE: 1

REVISIONS:



- NOTES:**
1. ALL ITEMS MARKED AS * ARE SUPPLIED BY NOV.
 2. ALL ITEMS MARKED AS ** ARE SUPPLIED BY OWNER.
 3. HYDRAULIC OPERATED VALVES FOR REGULATING MUD FLOWS.
 4. SHALE SHAKERS ARE TO BE OPERATED IN SEQUENCE.
 5. 1/2" AIR LINE (10-40PSI) TO LOCK DOWN SHAKER SCREEN WITH SEPARATE SHOCK-RESISTANT CHARGE FOR SMOOTH CHARGING OF SUPPER.
 6. PRESSURE SYSTEM 1 BRANCH TO EMERGENCY OCCASION (FIELD TO REMOVAL TO BE LOCATED IN SHAKER ROOM) TO INSTALL AND PRIMARY GAS TRAP SENSOR.
 7. PRESSURE SYSTEM 2 BRANCH TO EMERGENCY OCCASION (FIELD TO REMOVAL TO BE LOCATED IN SHAKER ROOM) TO INSTALL AND PRIMARY GAS TRAP SENSOR.
 8. PRESSURE SYSTEM 3 BRANCH TO EMERGENCY OCCASION (FIELD TO REMOVAL TO BE LOCATED IN SHAKER ROOM) TO INSTALL AND PRIMARY GAS TRAP SENSOR.

REV	ISSUE	DATE	CHK	APP	BY
1	ISSUED FOR CONSTRUCTION	18.01.15	VJA	NOG	DOA
2	ISSUED FOR CONSTRUCTION	21.07.14	BJL	NOG	DOA
3	ISSUED FOR CONSTRUCTION	21.07.14	BJL	NOG	DOA
4	ISSUED FOR CONSTRUCTION	21.07.14	BJL	NOG	DOA
5	ISSUED FOR CONSTRUCTION	21.07.14	BJL	NOG	DOA
6	ISSUED FOR CONSTRUCTION	21.07.14	BJL	NOG	DOA
7	ISSUED FOR CONSTRUCTION	21.07.14	BJL	NOG	DOA
8	ISSUED FOR CONSTRUCTION	21.07.14	BJL	NOG	DOA
9	ISSUED FOR CONSTRUCTION	21.07.14	BJL	NOG	DOA
10	ISSUED FOR CONSTRUCTION	21.07.14	BJL	NOG	DOA
11	ISSUED FOR CONSTRUCTION	21.07.14	BJL	NOG	DOA
12	ISSUED FOR CONSTRUCTION	21.07.14	BJL	NOG	DOA

ENSCO DS-89

The document is the property of SAMSUNG HEAVY IND. CO., LTD. And must not be used without its prior written consent.

ENSCO

SAMSUNG HEAVY INDUSTRIES

DRILLING TITLE: PIPING & INSTRUMENT DIAGRAM
SOLID CONTROL MUD PROCESS

CLIENT: ENSCO

PROJECT: ENSCO DS-89

DATE: 2015.01.15

REVISIONS:

NO.	DATE	DESCRIPTION
1	2015.01.15	ISSUED FOR CONSTRUCTION
2	2015.07.21	ISSUED FOR CONSTRUCTION
3	2015.07.21	ISSUED FOR CONSTRUCTION
4	2015.07.21	ISSUED FOR CONSTRUCTION
5	2015.07.21	ISSUED FOR CONSTRUCTION
6	2015.07.21	ISSUED FOR CONSTRUCTION
7	2015.07.21	ISSUED FOR CONSTRUCTION
8	2015.07.21	ISSUED FOR CONSTRUCTION
9	2015.07.21	ISSUED FOR CONSTRUCTION
10	2015.07.21	ISSUED FOR CONSTRUCTION
11	2015.07.21	ISSUED FOR CONSTRUCTION
12	2015.07.21	ISSUED FOR CONSTRUCTION

DRILLING TITLE: PIPING & INSTRUMENT DIAGRAM
SOLID CONTROL MUD PROCESS

CLIENT: ENSCO

PROJECT: ENSCO DS-89

DATE: 2015.01.15

REVISIONS:

NO.	DATE	DESCRIPTION
1	2015.01.15	ISSUED FOR CONSTRUCTION
2	2015.07.21	ISSUED FOR CONSTRUCTION
3	2015.07.21	ISSUED FOR CONSTRUCTION
4	2015.07.21	ISSUED FOR CONSTRUCTION
5	2015.07.21	ISSUED FOR CONSTRUCTION
6	2015.07.21	ISSUED FOR CONSTRUCTION
7	2015.07.21	ISSUED FOR CONSTRUCTION
8	2015.07.21	ISSUED FOR CONSTRUCTION
9	2015.07.21	ISSUED FOR CONSTRUCTION
10	2015.07.21	ISSUED FOR CONSTRUCTION
11	2015.07.21	ISSUED FOR CONSTRUCTION
12	2015.07.21	ISSUED FOR CONSTRUCTION

DRILLING TITLE: PIPING & INSTRUMENT DIAGRAM
SOLID CONTROL MUD PROCESS

CLIENT: ENSCO

PROJECT: ENSCO DS-89

DATE: 2015.01.15

REVISIONS:

NO.	DATE	DESCRIPTION
1	2015.01.15	ISSUED FOR CONSTRUCTION
2	2015.07.21	ISSUED FOR CONSTRUCTION
3	2015.07.21	ISSUED FOR CONSTRUCTION
4	2015.07.21	ISSUED FOR CONSTRUCTION
5	2015.07.21	ISSUED FOR CONSTRUCTION
6	2015.07.21	ISSUED FOR CONSTRUCTION
7	2015.07.21	ISSUED FOR CONSTRUCTION
8	2015.07.21	ISSUED FOR CONSTRUCTION
9	2015.07.21	ISSUED FOR CONSTRUCTION
10	2015.07.21	ISSUED FOR CONSTRUCTION
11	2015.07.21	ISSUED FOR CONSTRUCTION
12	2015.07.21	ISSUED FOR CONSTRUCTION

CONFIDENTIAL : Unauthorized use or disclosure of this material results in civil or criminal liabilities.

