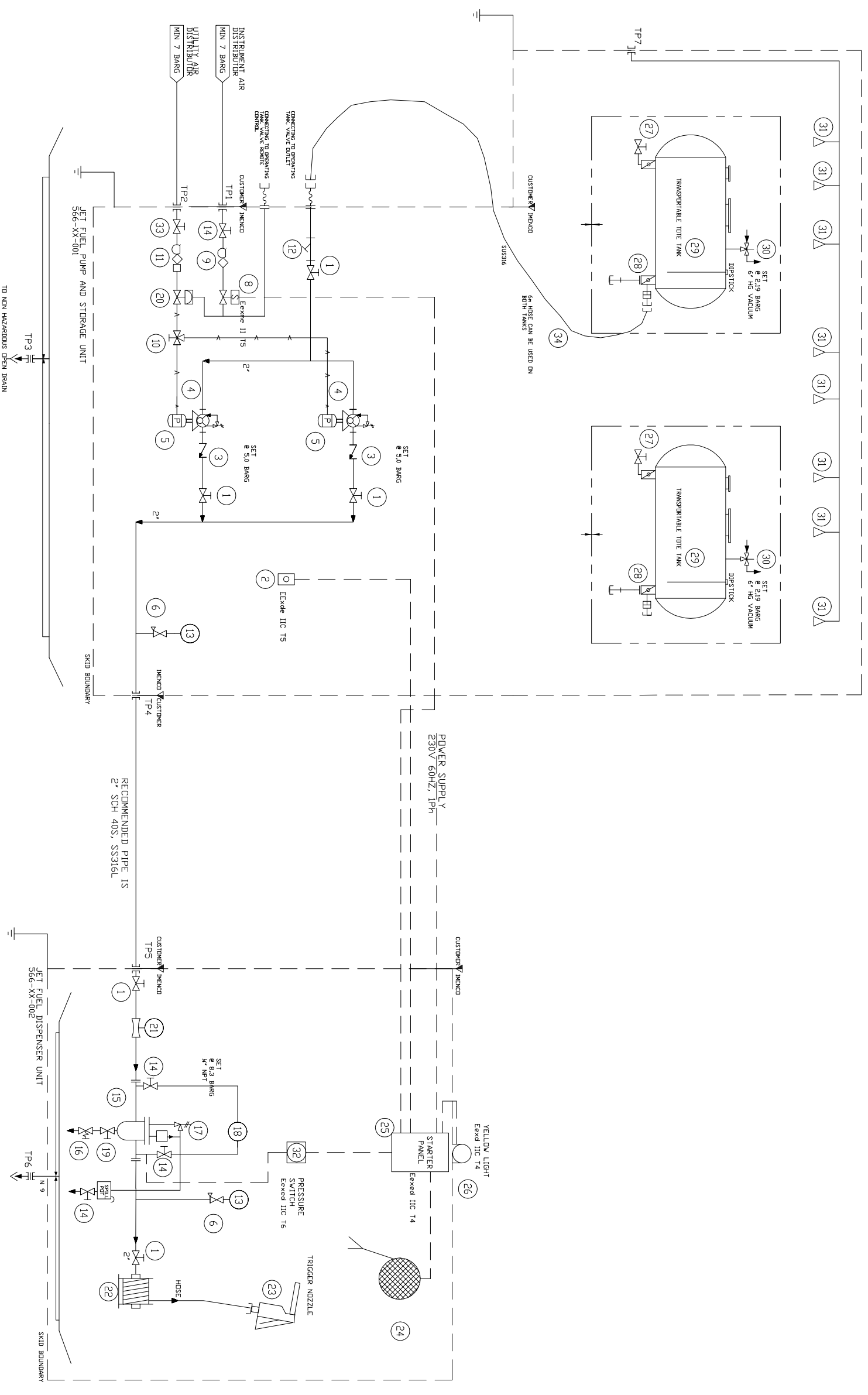


Tag No 566-XX-001
 Description Pump Unit/Storage Skid
 Capacity 13.8 m³/h
 Design pressure 8.3 Bar
 Size 5800mm x 2490mm x 2240mm
 Weight 2200 Kg
 Operating Weight 10400 Kg

Tag No 566-XX-002
 Description Dispenser Unit
 Capacity 16.8 m³/h
 Design pressure 8.3 Bar
 Size 1684mm x 1596mm x 1800mm
 Weight 800 Kg
 Operating Weight 1050 Kg

Tag No 566-TA-001 A/B
 Description Transportable tank
 Capacity 2900 Litres
 Design pressure 2.19 Bar
 Size 2150mm x 1900mm x 2331mm
 Weight 1700 Kg
 Operating Weight 4500 Kg



NOTES:

- DESIGN PRESSURE 8.3 BAR
- POWER 230V 60 Hz, 1PH
- SYSTEM ACCORDING TO CAP437/DNV
- ALL GAUGES WILL BE kg/cm² UNIT
- BONDING OVER ALL FLANGE CONNECTIONS WILL BE INSTALLED AND GROUNDING CHECKED
- ITEM 15 (TRIPLE FILTER) CONTAINS BOTH SEPARATOR AND MONITOR ELEMENTS.

TP	SIZE	RATING	SERVICE
TP1	10mm Bulkhead	150#	INSTRUMENT AIR
TP2	1" JIS, SD, RF	150#	UTILITY AIR
TP3	3" JIS, SD, RF	150#	SKID DRAIN
TP4	2" JIS, SD, RF	150#	PUMP UNIT OUTLET
TP5	2" JIS, SD, RF	150#	DISPENSER UNIT INLET
TP6	2" JIS, SD, RF	150#	DISPENSER DRAIN
TP7	2" JIS, SD, RF	150#	DELUGE LINE

Item	Description	QTY
1	2" ANSI 150# Fire Safe Ball Valve	SS316 5
2	Emergency Stop Panel, Exx	GPR 1
3	2" CHECK VALVE RK86A	SS316 2
4	Jet Fuel Vane Pumps	CI 2
5	Air Motor for Fuel Pump	CI 2
6	2 way manifold	SS316 2
7		
8	Solenoid Valve 1/4", 3-ways	SS316 1
9	Filter/regulator/1/4"	GPR 1
10	1", 3 way, L- port, Ball valve	SS316 1
11	Filter/regulator/lubricator 1"	GPR 1
12	Y-Strainer 60 mesh, Ansi 150# RF	SS316 1
13	Pressure Gauge Ø100 mm.,	SS316 2
14	1/4" ball valve, NPT	SS316 4
15	Triple Filter	SS316 1
16	3/4" Selfclosing Ball Valve	SS316 1
17	Safety Valve 1/4", Set Point 8.3 Barg	SS316 1
18	Diff. Pressure Gauge	SS316 1
19	3/4" ball valve, NPT	SS316 1
20	1" Air Operated Ball Valve	SS316 1
21	Flow Meter, Resetable with Totalizer	ALL 1
22	Hose reel 30m 1 1/2" Hose	SS316 1
23	Gravity Nozzle	
24	Garrmon grounding reel 30m, ML 3416-2	SS316 1
25	Start Panel Exx, Including Ground tester	SS316 1
26	Yellow light - EExd	SS316 1
27	Sample Valve 3/4"	SS316 2
28	Foot Valve Outlet Assy w/ Pneum Actuator	SS316 2
29	Jet Fuel Transportable Tank	SS316 2
30	Relief Valve press / Vacuum Valve	SS316 2
31	Deluge nozzle	Brass 8
32	Pressure Switch	SS316 1
33	1" Valve, NPT	SS316 1
34	2" x8m Anrakonda Hose	SS316 1

DO NOT SCALE IF IN DOUBT ASK

Client: **SAMSUNG**

Project Name: **HULL 2059/62**

Revision: 01 12.09.12 ISSUED FOR COMMENTS

Project Name: **HULL 2059/62**

Revision: 02 06.12.12 RE-ISSUED FOR COMMENTS

Revision: 03 10.03.14 AS BUILT

Drawn by: RB

Checked by: RB

Date: 12.09.12

Approved by: [Signature]

Date: 12.09.12

Scale: 1:1

Sheet No: 1 of 103

Job No.: 1502471-566-AS-001

Project No.: 1502471-566-AS-001

Drawing No.: 1 of 103

Reference: A119A02008

Qty	Item	Description/Dimension	Material/Qty	Remarks
03	10.03.14	AS BUILT		CB RB
02	06.12.12	RE-ISSUED FOR COMMENTS		CB RB
01	12.09.12	ISSUED FOR COMMENTS		CB RB

imenco

www.imenco.com

Select Helicopter Refuelling Systems

TEC

This document must not be copied or the contents thereof inserted to a third party without Imenco's written permission.

Reproduction by: [Signature]

Tag No: [Blank]

Td/Weight: [Blank]

Service: JET A1

Test Pressure: 12.5 Bar