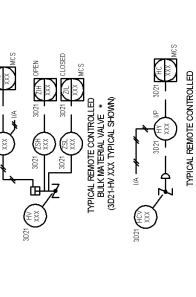
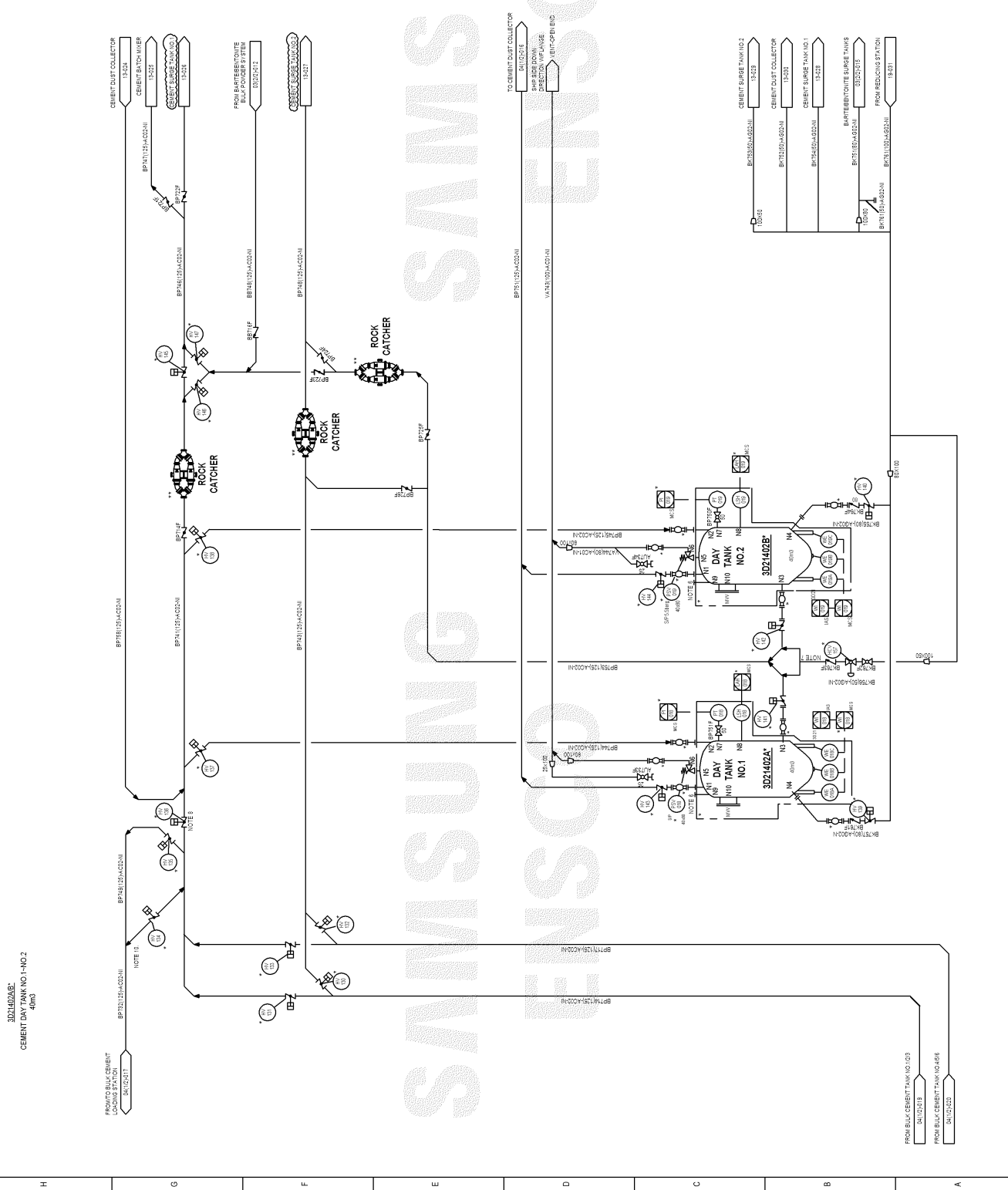


- NOTES:**
1. ALL ITEMS MARKED AS ** ARE SUPPLIED BY/NOV.
 2. ALL ITEMS MARKED AS * ARE SUPPLIED BY CEMENTER CONTRACTOR(BP).
 3. SURGE TANKS OF CEMENT SYSTEM ARE INCLUDED IN VENDORS PACKAGE.
 4. LINE ADJTS TO BE USED FOR VERTICAL COUPLINGS FOR 2" AND ABOVE.
 5. ALL BENDS TO BE 50 MINIMUM ON ALL PRODUCT LINES.
 6. MANUAL SOUNDINGS.
 7. PIPE FROM CONTROL VALVE TO MAIN LINE WITH PARING TO BE AS SHOWN.
 8. THIS VALVE SHALL BE CLOSED WHEN CEMENT OFFLOADING.
 9. TYPICAL REMOTE OPERATED VALVE FOR BULK MATERIAL.
 10. WHEN EMPTY DAY TANK, THIS FLOW TO LOADING STATION IS USED.



PARING MAIN LINE WITH CONTROLLING VALVE (022H/AV TYPICAL SHOWN)

10. WHEN EMPTY DAY TANK, THIS FLOW TO LOADING STATION IS USED.



| REV | ISSUE | DATE | ISSN | CHK | ENR | APP | BY |
|-----|---------------------|----------|------|-----|-----|-----|-----|
| 1 | ISSUED FOR APPROVAL | 02.27.12 | HMC | NOI | NOI | NOI | NOI |
| 2 | ISSUED FOR APPROVAL | 02.27.12 | HMC | NOI | NOI | NOI | NOI |
| 3 | ISSUED FOR APPROVAL | 02.27.12 | HMC | NOI | NOI | NOI | NOI |
| 4 | ISSUED FOR APPROVAL | 02.27.12 | HMC | NOI | NOI | NOI | NOI |
| 5 | ISSUED FOR APPROVAL | 02.27.12 | HMC | NOI | NOI | NOI | NOI |
| 6 | ISSUED FOR APPROVAL | 02.27.12 | HMC | NOI | NOI | NOI | NOI |
| 7 | ISSUED FOR APPROVAL | 02.27.12 | HMC | NOI | NOI | NOI | NOI |
| 8 | ISSUED FOR APPROVAL | 02.27.12 | HMC | NOI | NOI | NOI | NOI |
| 9 | ISSUED FOR APPROVAL | 02.27.12 | HMC | NOI | NOI | NOI | NOI |
| 10 | ISSUED FOR APPROVAL | 02.27.12 | HMC | NOI | NOI | NOI | NOI |
| 11 | ISSUED FOR APPROVAL | 02.27.12 | HMC | NOI | NOI | NOI | NOI |
| 12 | ISSUED FOR APPROVAL | 02.27.12 | HMC | NOI | NOI | NOI | NOI |

PROJECT: ENSCO DS-89

CLIENT: ENSCO

PROJECT TITLE: PIPING & INSTRUMENT DIAGRAM BULK POWDER SYSTEM, CEMENT

DWG SIZE: A1

SCALE: NTS

DATE: 2009/02/27

DRAWING NO: 2009/02-RFBA-100-04

22 H

CONFIDENTIAL

