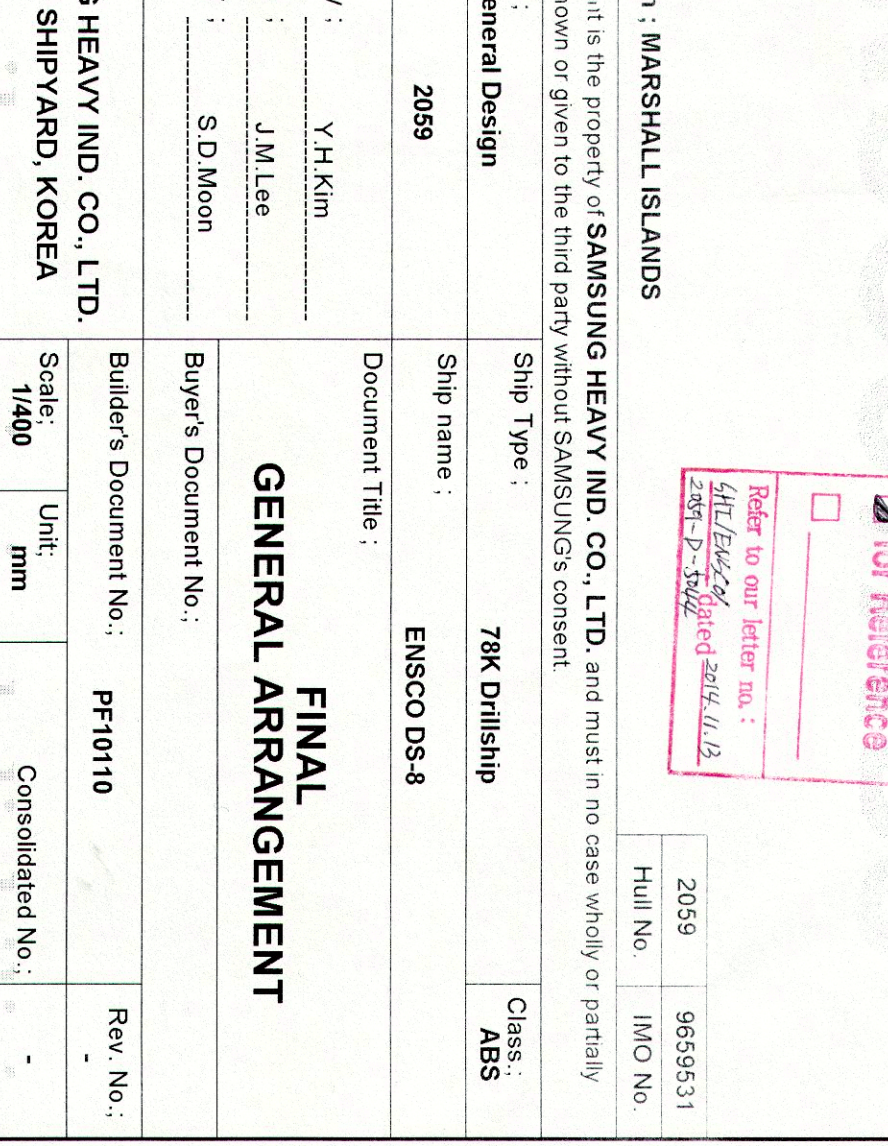
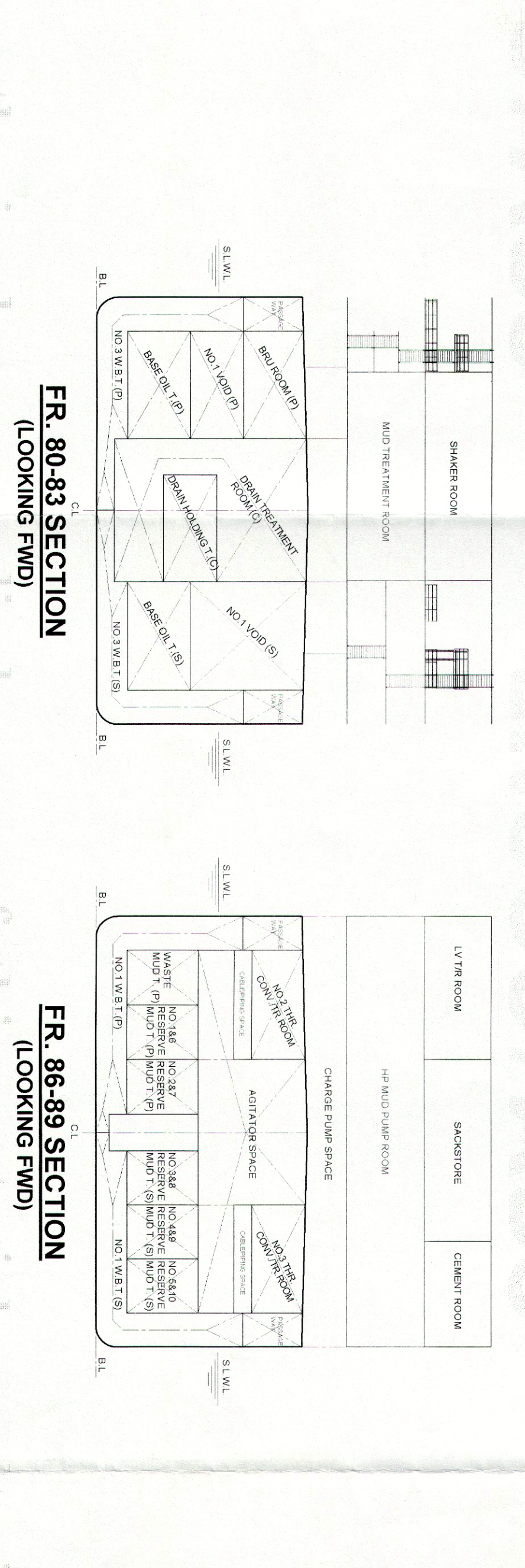
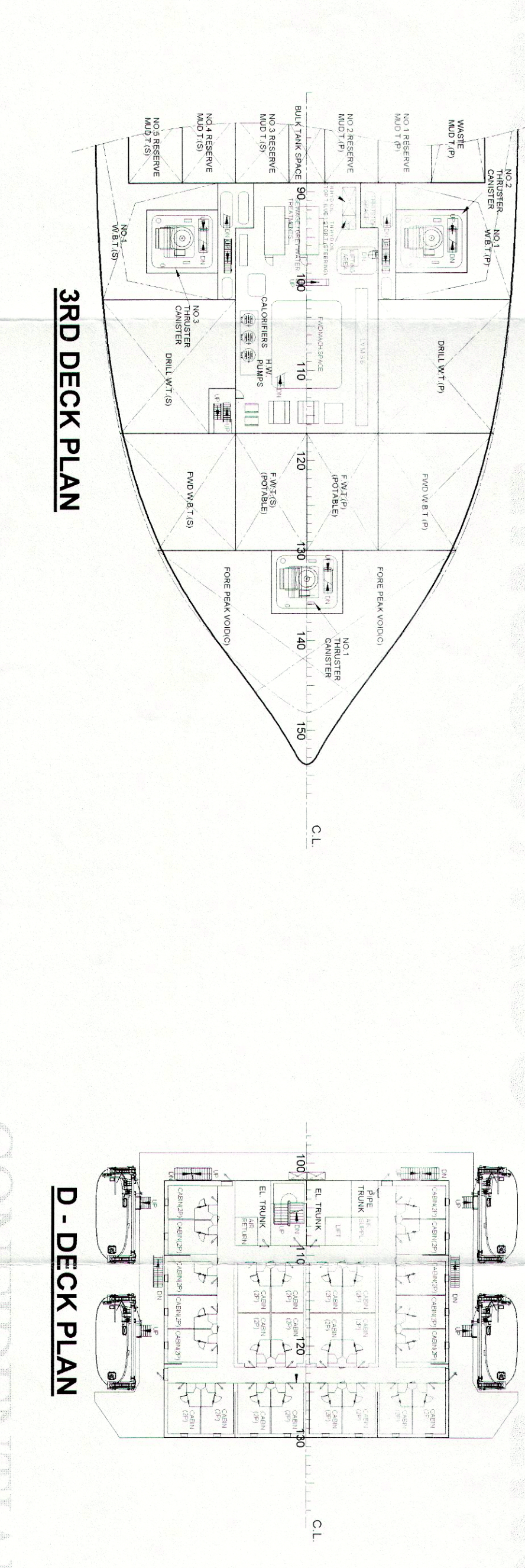
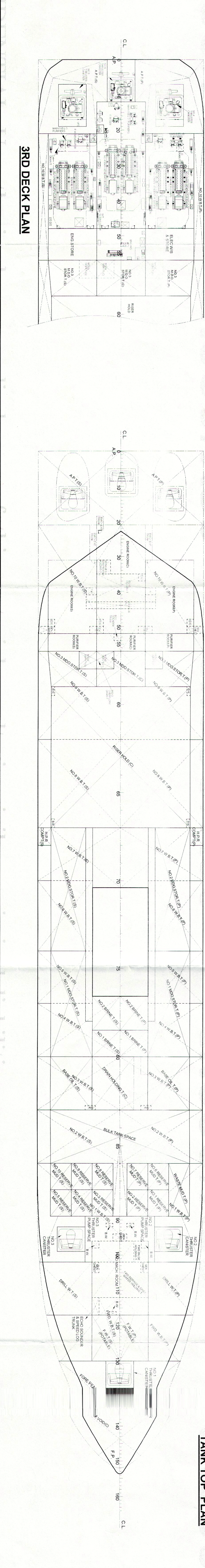
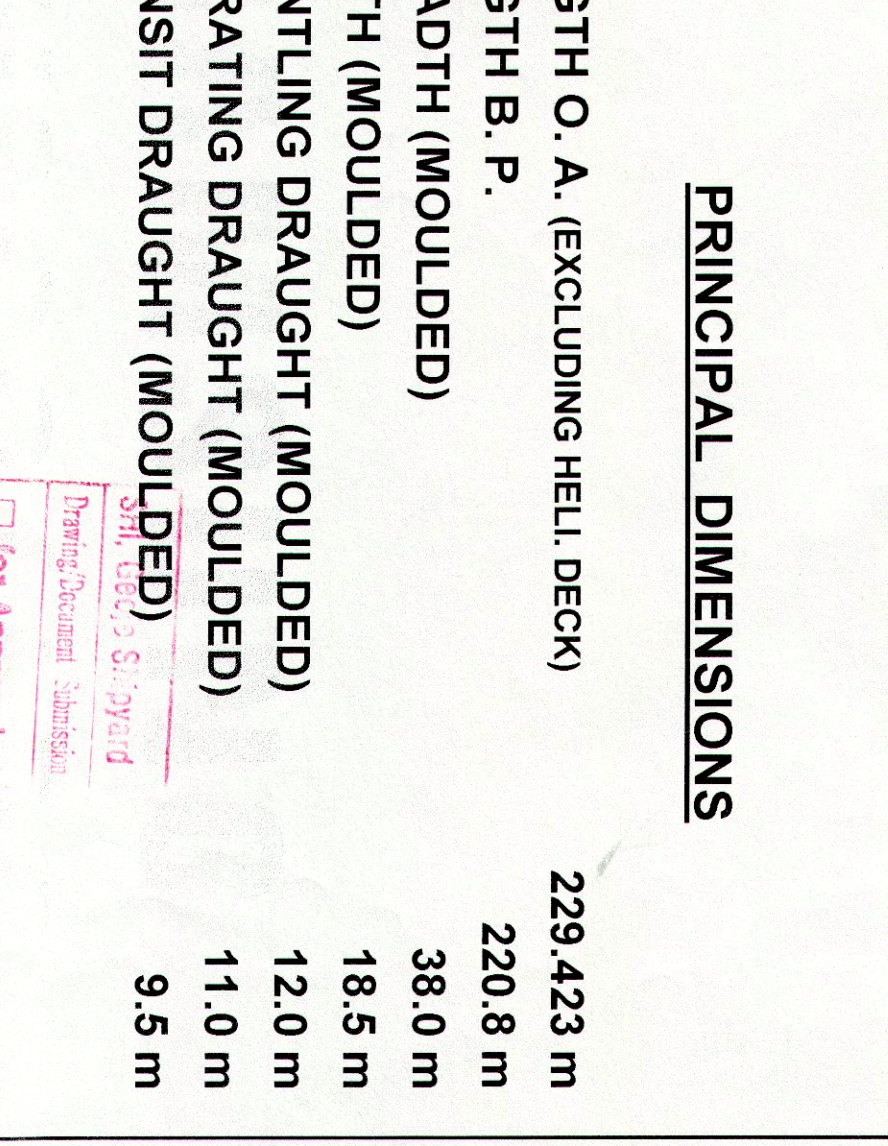
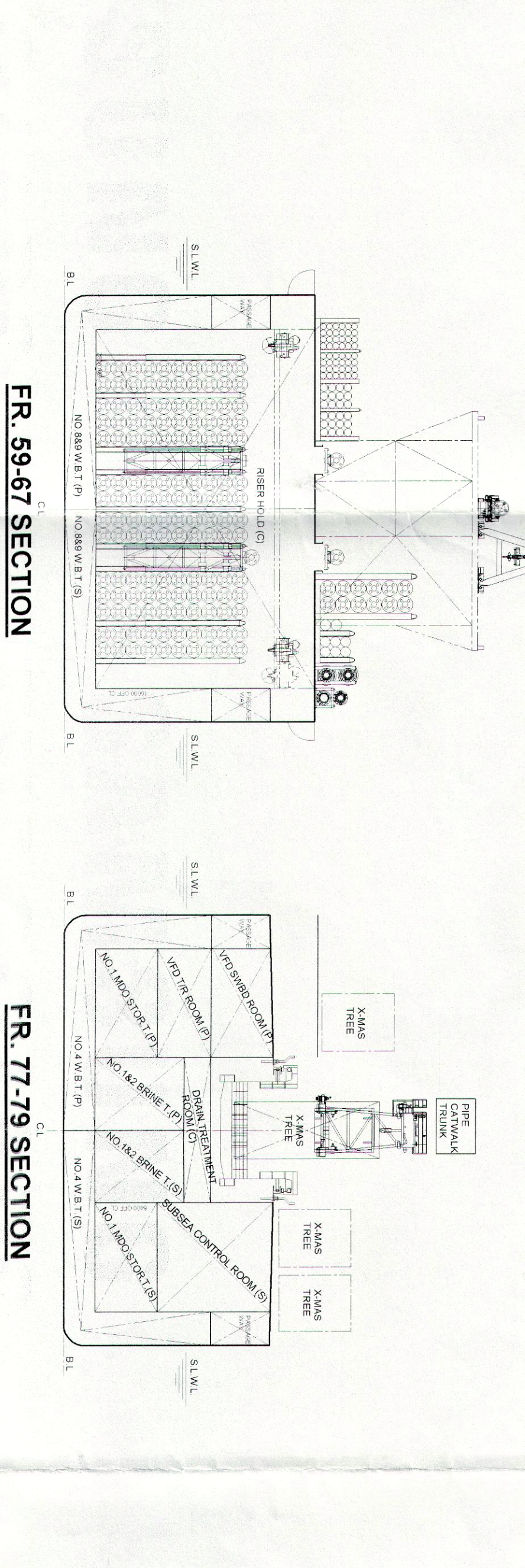
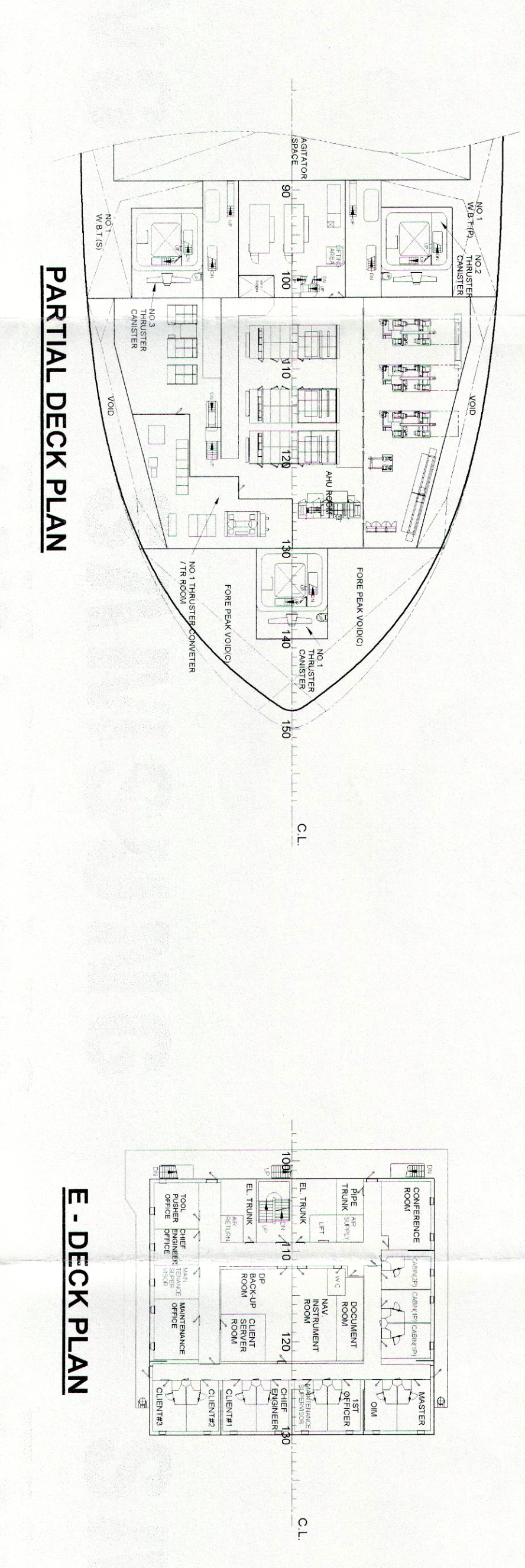
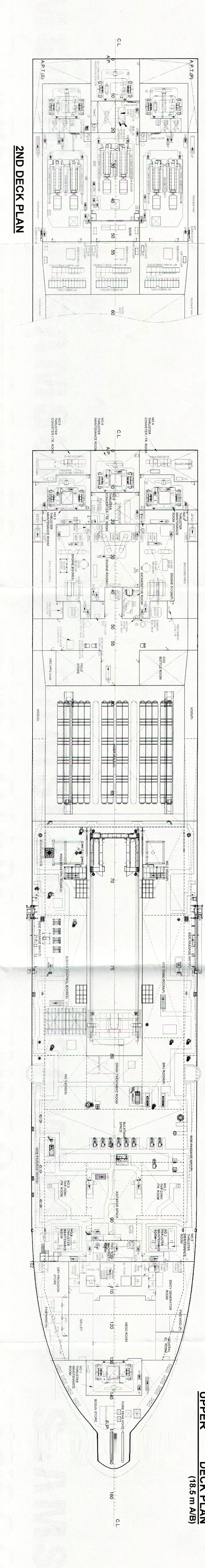
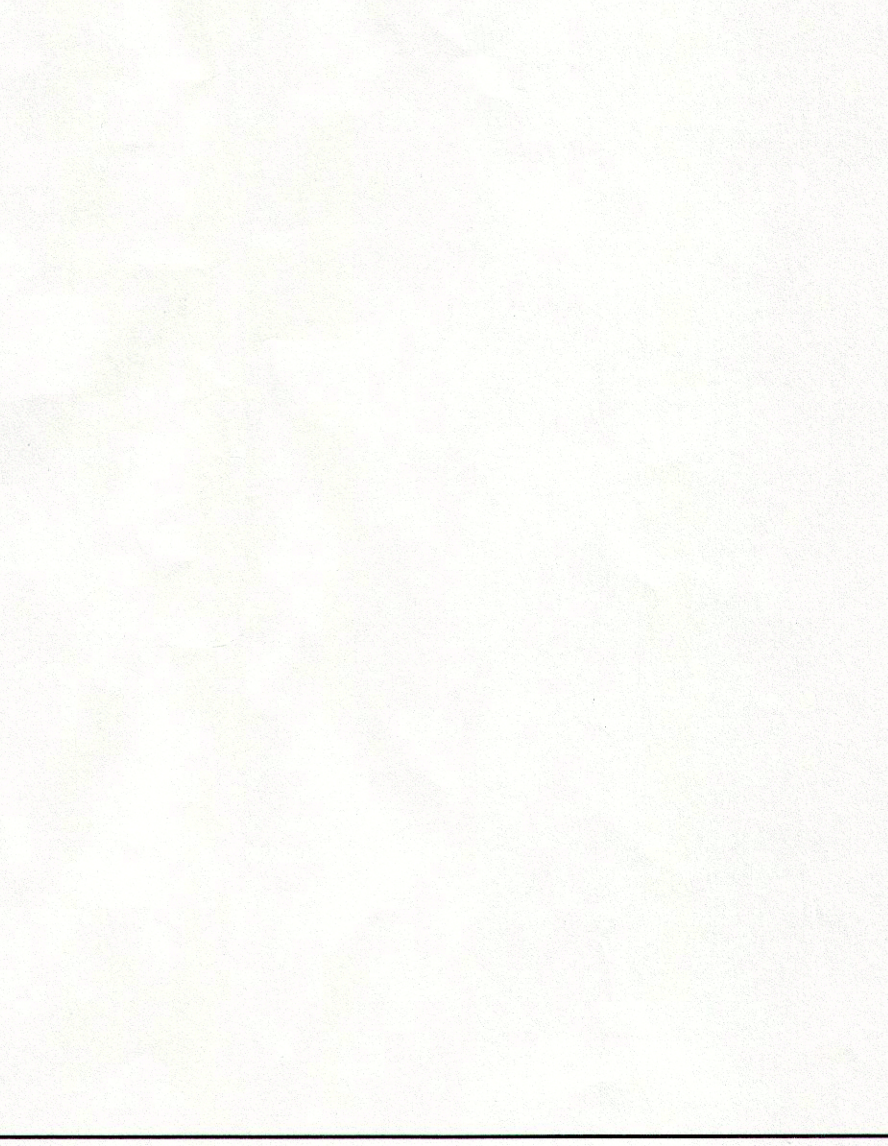
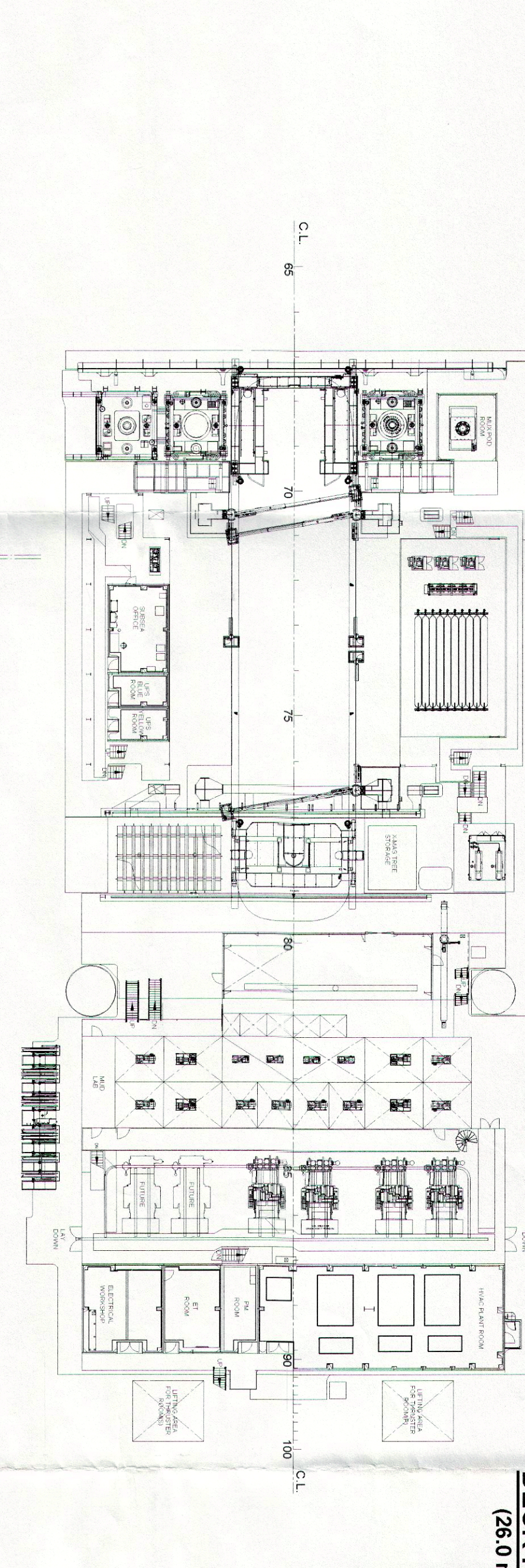
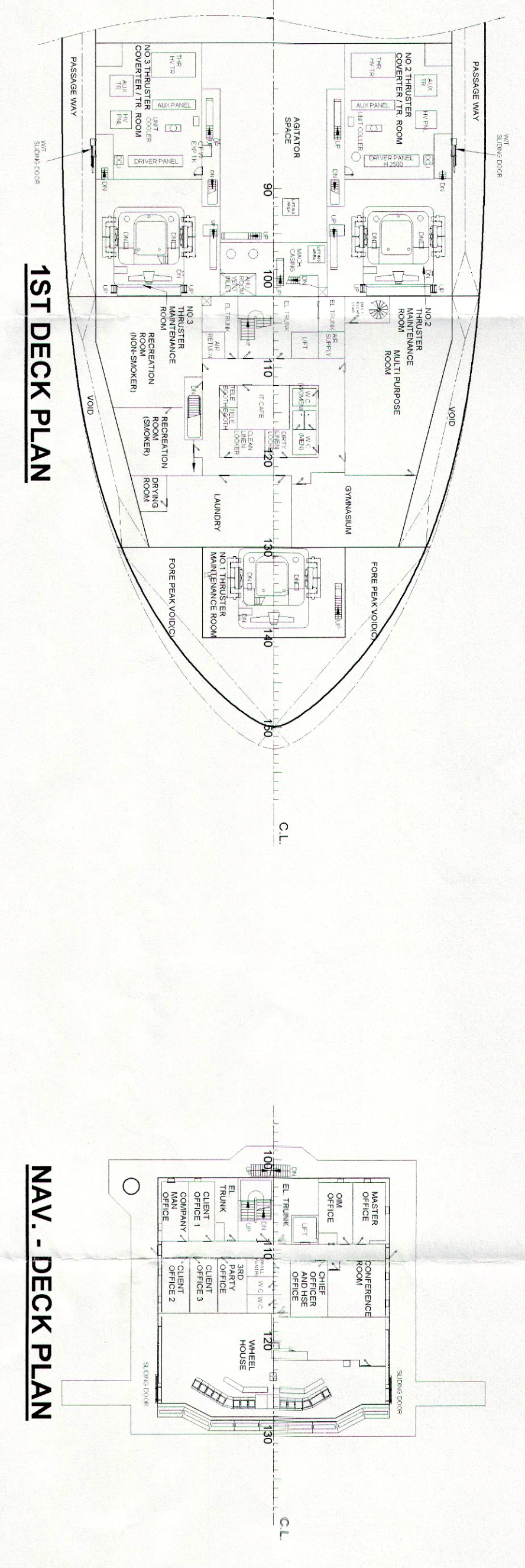
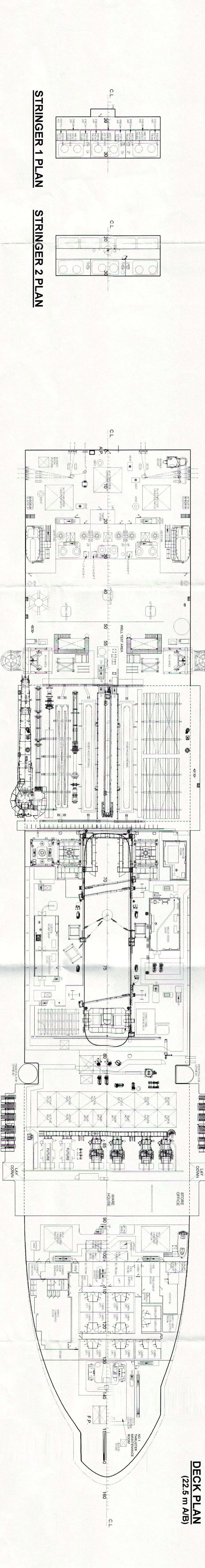
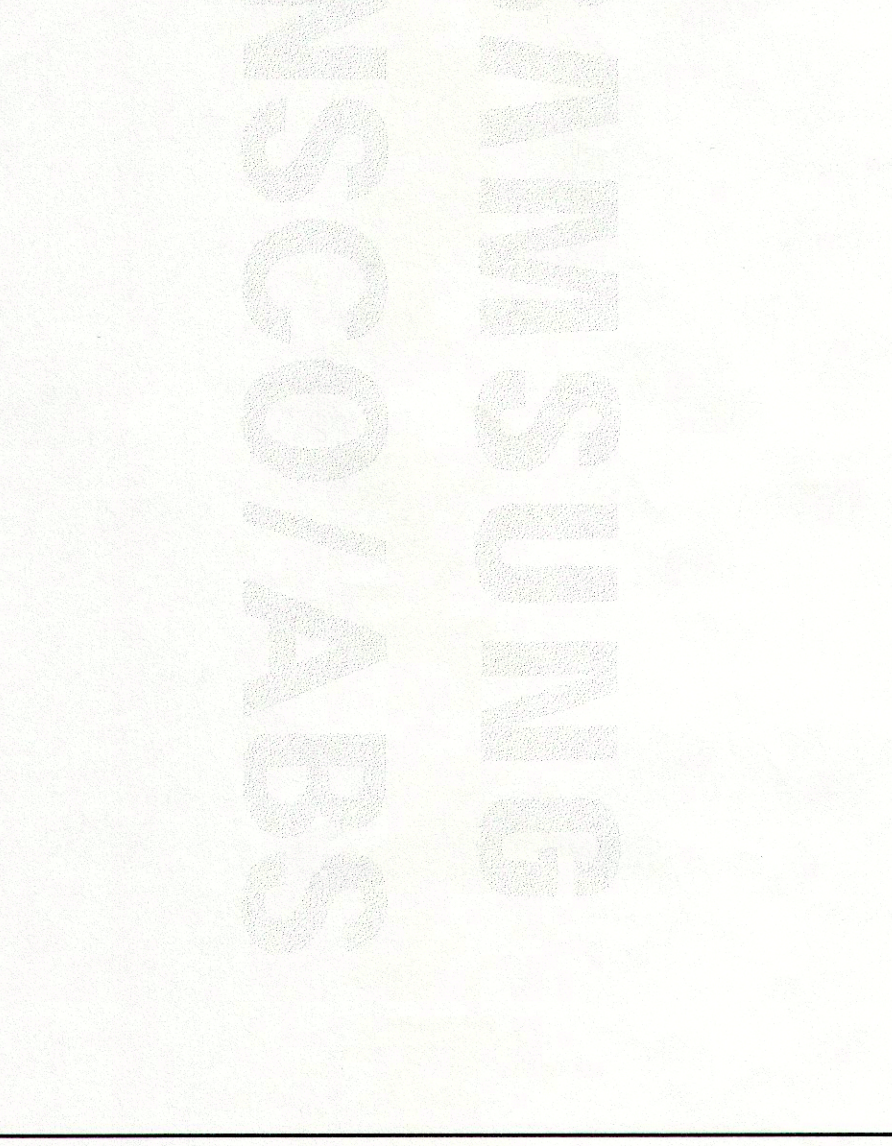
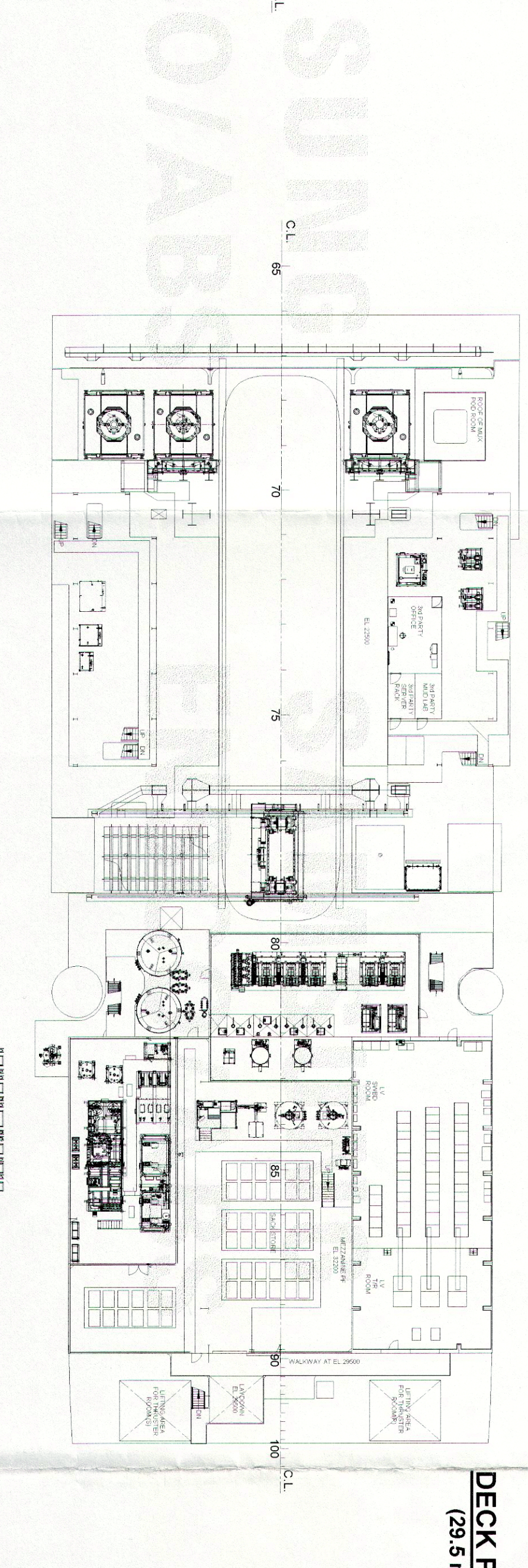
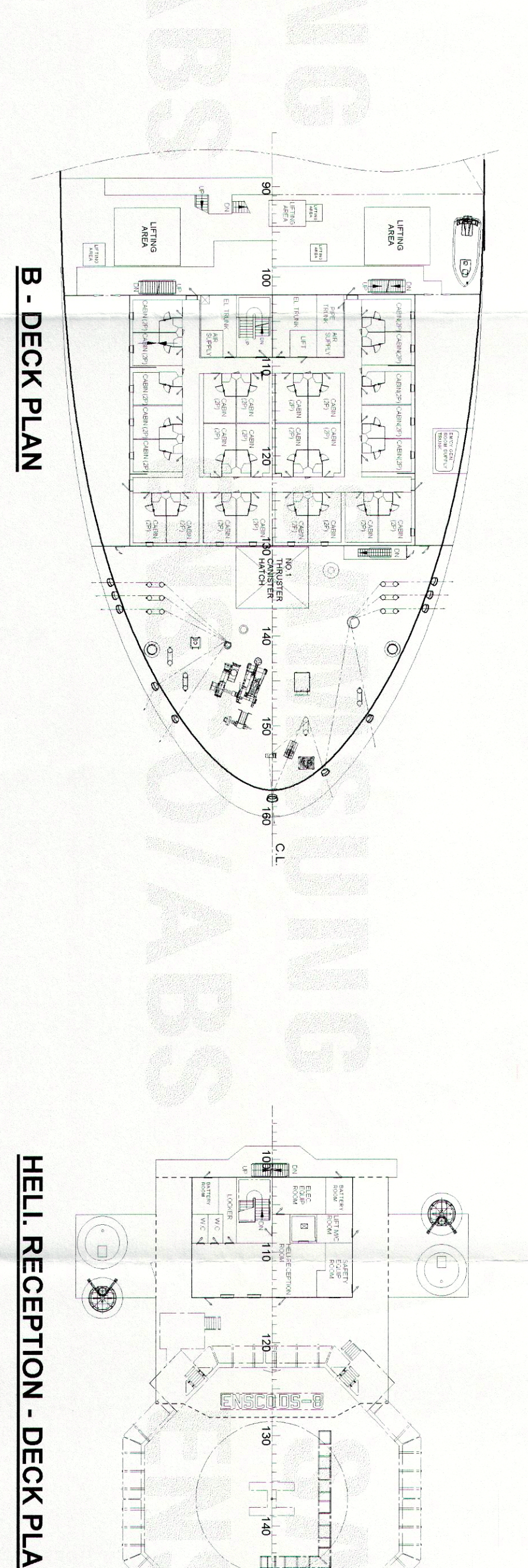
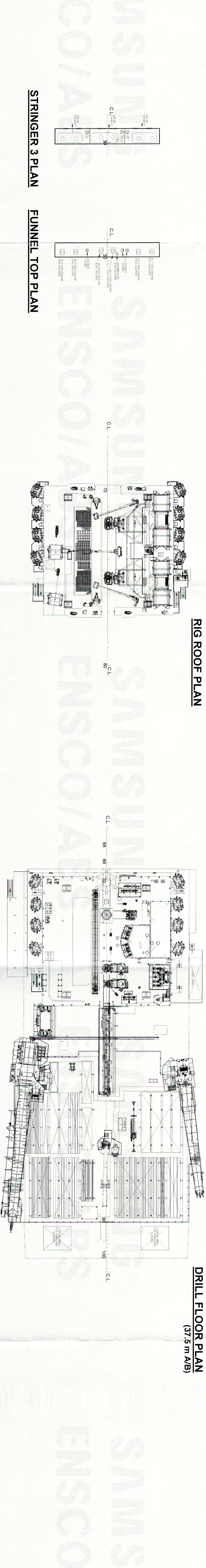
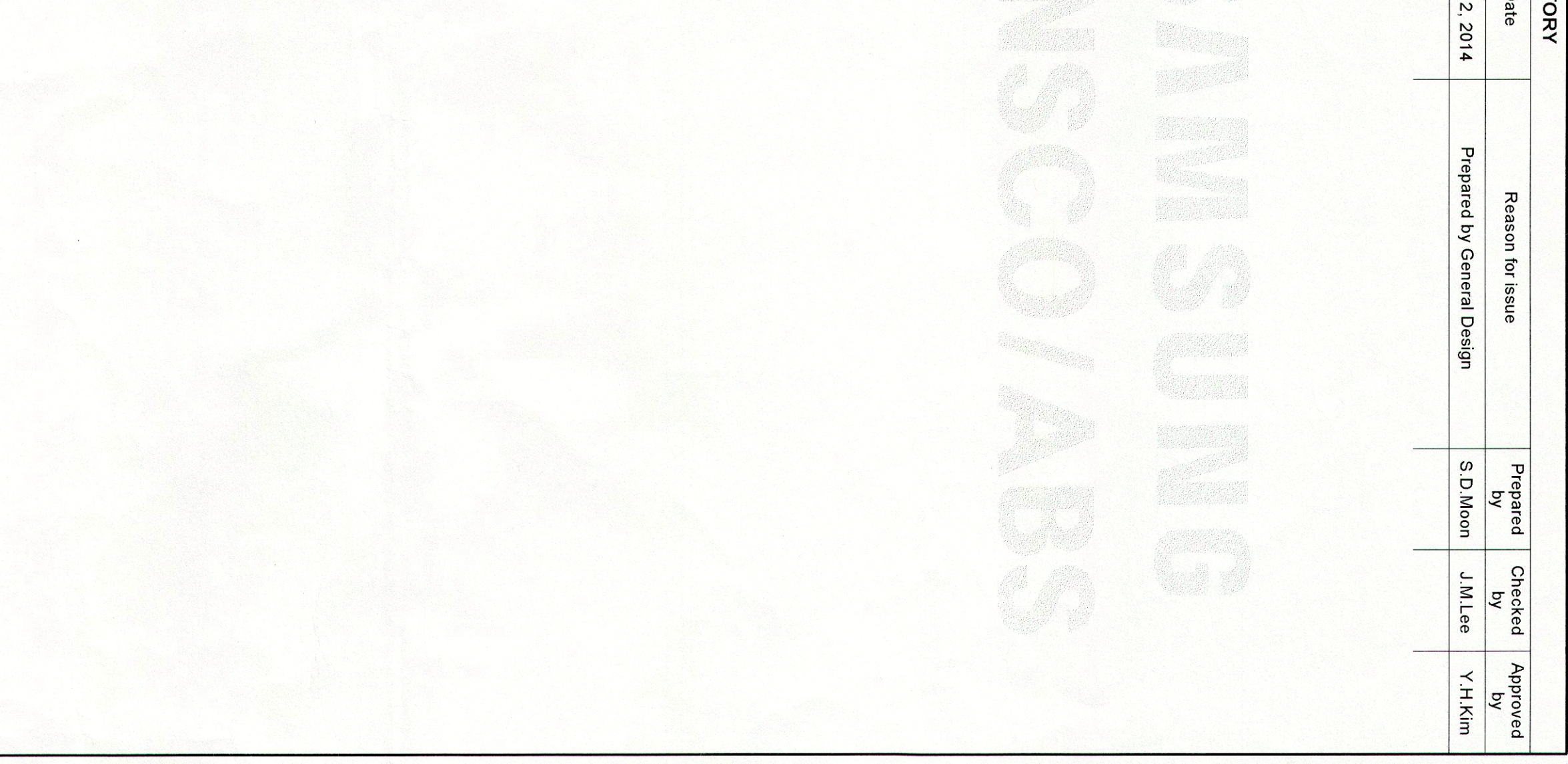
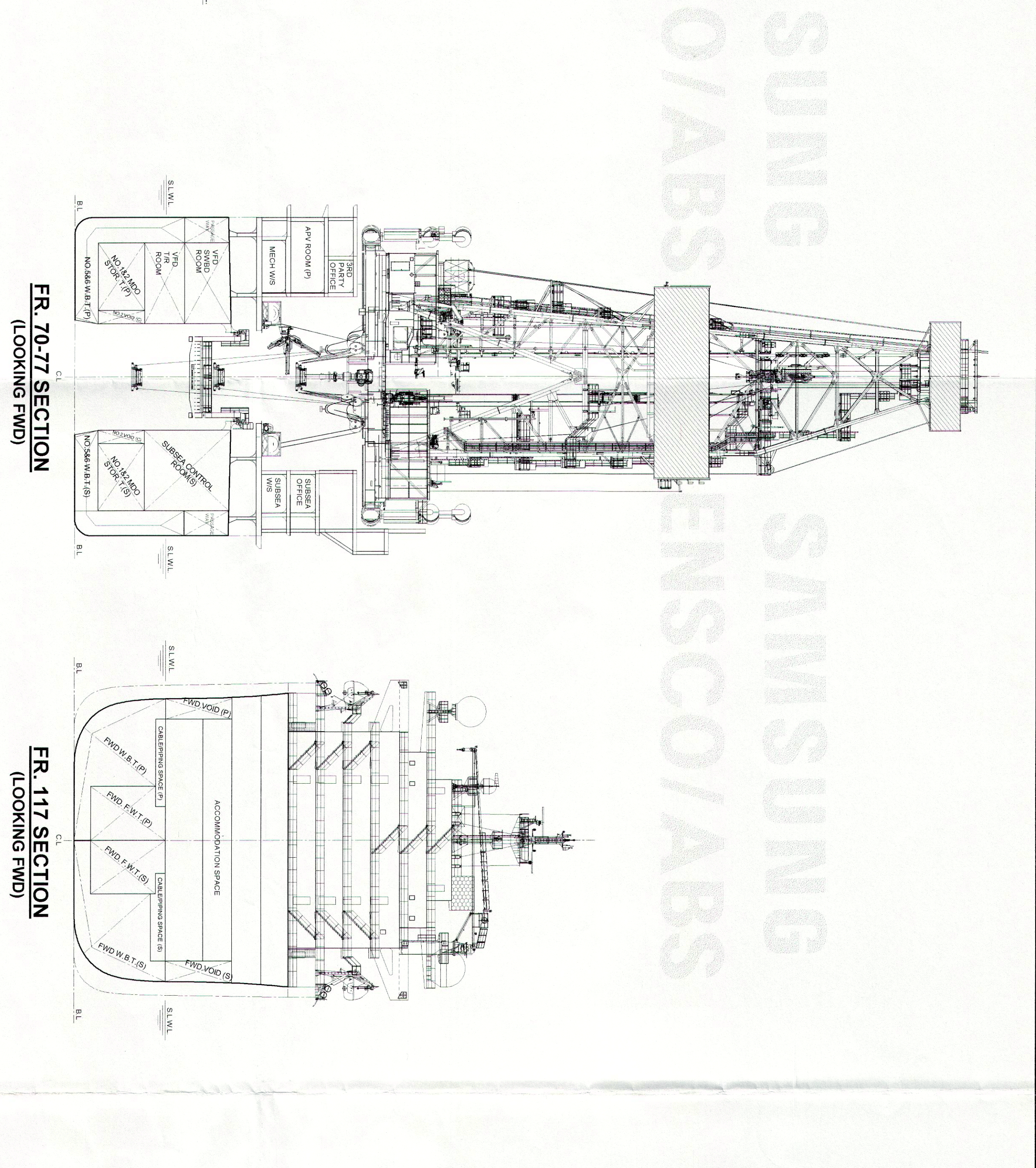
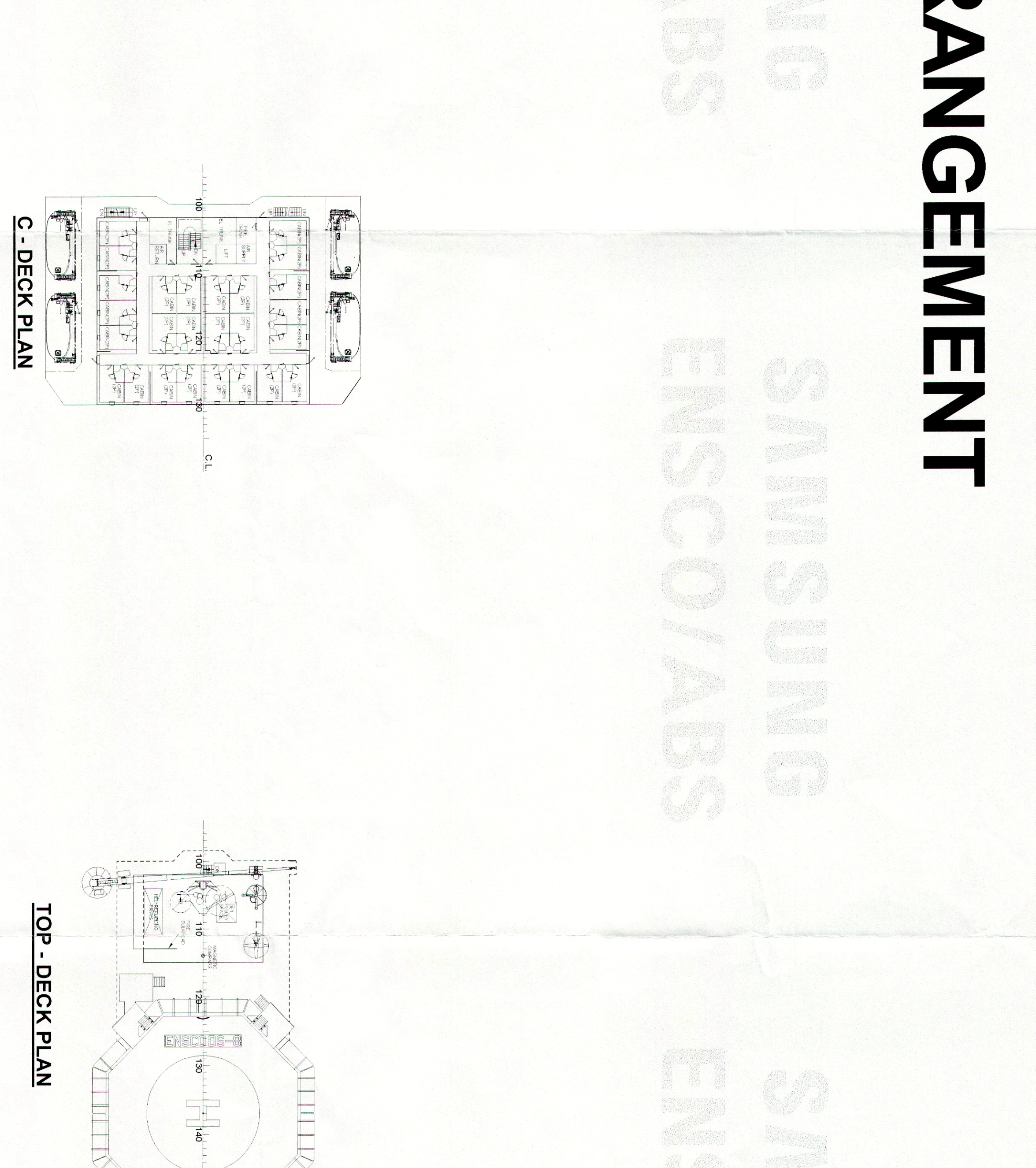
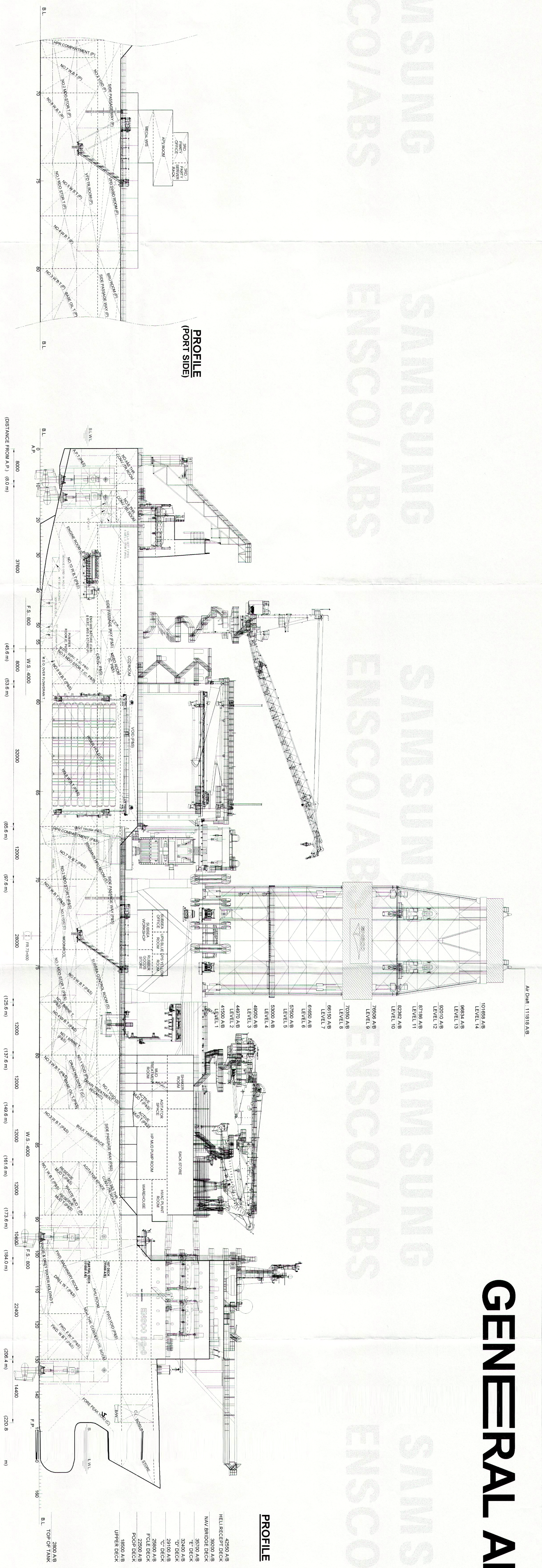


GENERAL ARRANGEMENT



PRINCIPAL DIMENSIONS

LENGTH O.A. (EXCLUDING HELI DECK)	229.423 m
LENGTH B.P.	220.8 m
BREADTH (MOULDED)	38.0 m
DEPTH (MOULDED)	18.5 m
SCANTLING DRAUGHT (MOULDED)	12.0 m
OPERATING DRAUGHT (MOULDED)	11.0 m
TRANSIT DRAUGHT (MOULDED)	9.5 m

GENERAL ARRANGEMENT

Registration: HANSEATIC ISLANDS	2019	9859571
Builder: SAMSUNG HEAVY IND. CO., LTD.	2019	9859571
Ship Name: THE DRAUGHT	2019	9859571
Ship No.: 2019	2019	9859571
Approved By: V. H. Lee	2019	9859571
Checked By: S. O. Moon	2019	9859571
Prepared By: S. O. Moon	2019	9859571
Project Document No.: FR-88-89	2019	9859571
Builder's Document No.: FR-88-89	2019	9859571
Contract No.: 2019	2019	9859571
Consideration No.: 2019	2019	9859571

REVISIONS

No.	Date	Reason	By	Checked	Approved
1	2019.02.20	Approved by Owner Design	S.O. Moon	J. Lee	V. H. Lee