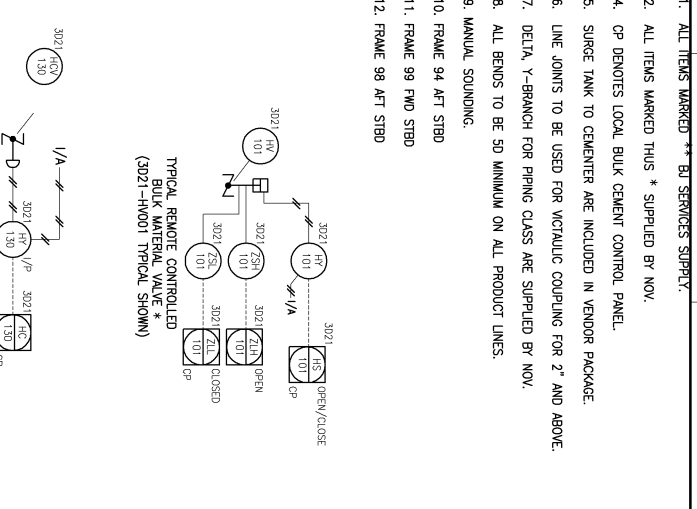


- NOTES:
1. ALL ITEMS MARKED *** BY SERVICES SUPPLY.
 2. ALL ITEMS MARKED THIS * SUPPLIED BY NOV.
 3. CP DENOTES LOCAL BULK CEMENT CONTROL PANEL.
 4. SURGE TANK TO CEMENTER ARE INCLUDED IN VENDOR PACKAGE.
 5. LINE JOINTS TO BE USED FOR W/RAULIC COUPLING FOR 2" AND ABOVE.
 6. DELTA Y-BRANCH FOR PIPING CLASS ARE SUPPLIED BY NOV.
 7. ALL BENDS TO BE 5D MINIMUM ON ALL PRODUCT LINES.
 8. MANUAL SOUNDING.
 9. FRAME 99 FWD STBD
 10. FRAME 94 AFT STBD
 11. FRAME 98 AFT STBD
 12. FRAME 98 AFT STBD



10. BRANCH FROM BP720(125)-AC02-NI-0 LINE TO BE ARRANGED AS CLOSE AS POSSIBLE TO 3071401.
11. SUPERSEDED DOC. No. GF112711-0004-PID. PROCESS & INSTRUMENT DIAGRAM: BULK POWDER SYSTEM CEMENT.
12. * TUBING TO SAMPLE UNIT AIR CYLINDER INSTRUMENT AIR SUPPLY SEE Dwg. No. GF112711-1200-0121.

REV	ISSUE	DATE	ORIG	CHK	ENG	APP
0	APPROVED FOR CONSTRUCTION	21.07.06	RPA	JUN	KJR	CAN
01	RE-APPROVED FOR CONSTRUCTION	28.09.06	RPA	JUN	KJR	CAN
02	RE-APPROVED FOR CONSTRUCTION	22.08.07	RPA	MWC		LOG
03	RE-APPROVED FOR CONSTRUCTION	28.01.08	CHH	MWC		LOG
04	AS-BUILT	04.06.08	HHC	MWC		KPM

PROJECT	CLIENT	BUILDER
MOSVOLD DRILLSHIP	MOSVOLD SHIPPING LTD.	SAMSUNG HEAVY INDUSTRIES

DRAWING TITLE	DRAWING No.	SCALE	DATE
PROCESS & INSTRUMENT DIAGRAM BULK POWDER SYSTEM CEMENT	GF112711-1200-0104	NTS	1/1 04

DESIGNER	CHECKER	DATE
NTS		