

GENERAL NOTES

G1) THE EXACT NUMBER OF SCUPPER TO BE UPDATED WHEN THE PIPING ROUTING IS FIXED.

G2) FOR LOCATION OF DRAIN SCUPPERS, PLEASE REFER TO PIPING ARRANGEMENT DRAWING AT DETAIL DESIGN STAGE.

G3) MAIN DECK SCUPPER PIPES SHALL BE OF ND 125MM, AND SHALL BE ARRANGED AT THE INTERVAL OF APPROX.15M AT FWD AND AFTER PARTS OF MAIN DECK AND AT THE INTERVAL OF APPROX.30M AT HOLD AREA. AND THE SCUPPER PIPES SHALL BE LED TO THE SIDE SHELL BELOW APPROX.500MM FROM THE MAIN DECK.

NOTES

1) NO.116 - NO.133 POINTS ARE TIE-DOWN POINTS. FOR DETAILS, PLEASE REFER TO DWG. 3603DA560F001.

2) DRAIN LINE FROM CUTTING CONTAINER STORAGE AREA SHOULD BE LED TO HAZARDOUS DRAIN MANIFOLD. REFER TO DWG.NO DA804P001-3

3) DRAIN LINE FROM X-MAS TREE LADING AREA SHOULD BE LED TO CONTAMINATED DRAIN MANIFOLD. REFER TO DWG.NO DA804P001-4

4) DRAIN LINE FROM BOP LANDING AREA & LMRP LANDING AREA SHOULD BE LED TO CONTAMINATED DRAIN MANIFOLD. REFER TO DWG.NO DA804P001-4

REVISION HISTORY

1) REQUEST FROM PIPING,(2011.01.20)

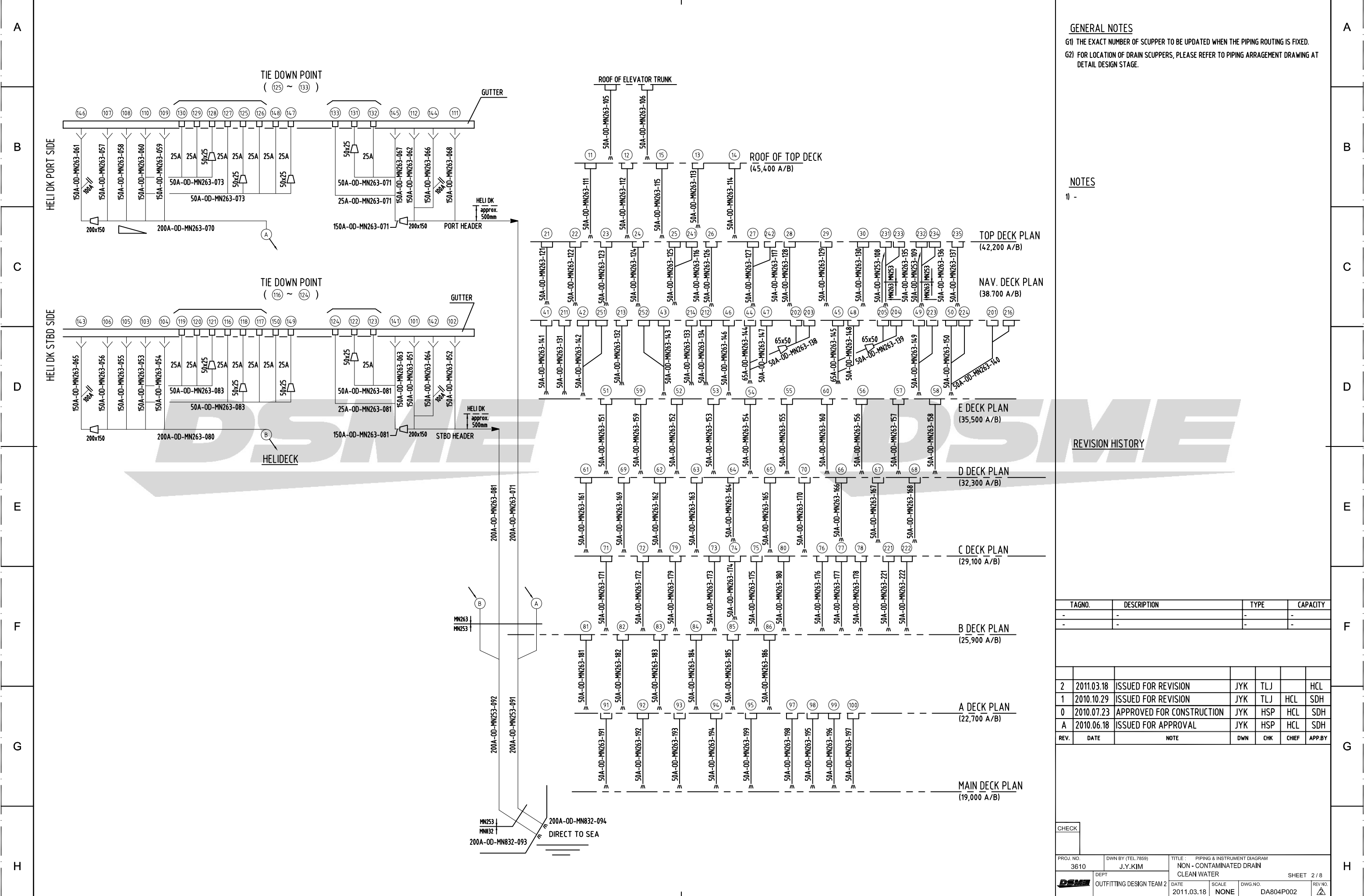
REV.	DATE	NOTE	DWN	CHK	CHIEF	APP.BY
2	2011.03.18	ISSUED FOR REVISION	JYK	TLJ		HCL
1	2010.10.29	ISSUED FOR REVISION	JYK	TLJ	HCL	SDH
0	2010.07.23	APPROVED FOR CONSTRUCTION	JYK	HSP	HCL	SDH
A	2010.06.18	ISSUED FOR APPROVAL	JYK	HSP	HCL	SDH

DAEWOO SHIPBUILDING & MARINE ENGINEERING CO.,LTD.

ISSUED FOR INFORMATION
 ISSUED FOR APPROVAL
 ISSUED FOR CONSTRUCTION

DATE

CHECK	PROJ. NO. 3610	DWNN BY (TEL.7859) J.Y.KIM	TITLE : PIPING & INSTRUMENT DIAGRAM NON-CONTAMINATED DRAIN CLEAN WATER	DEPT OUTFITTING DESIGN TEAM 2	SCALE NONE	DWG. NO. DA804P002	SHEET 1 / 8
	DATE 2011.03.18					REV. NO. DA804P002	



GENERAL NOTES
 G1) THE EXACT NUMBER OF SCUPPER TO BE UPDATED WHEN THE PIPING ROUTING IS FIXED.
 G2) FOR LOCATION OF DRAIN SCUPPERS, PLEASE REFER TO PIPING ARRANGEMENT DRAWING AT DETAIL DESIGN STAGE.

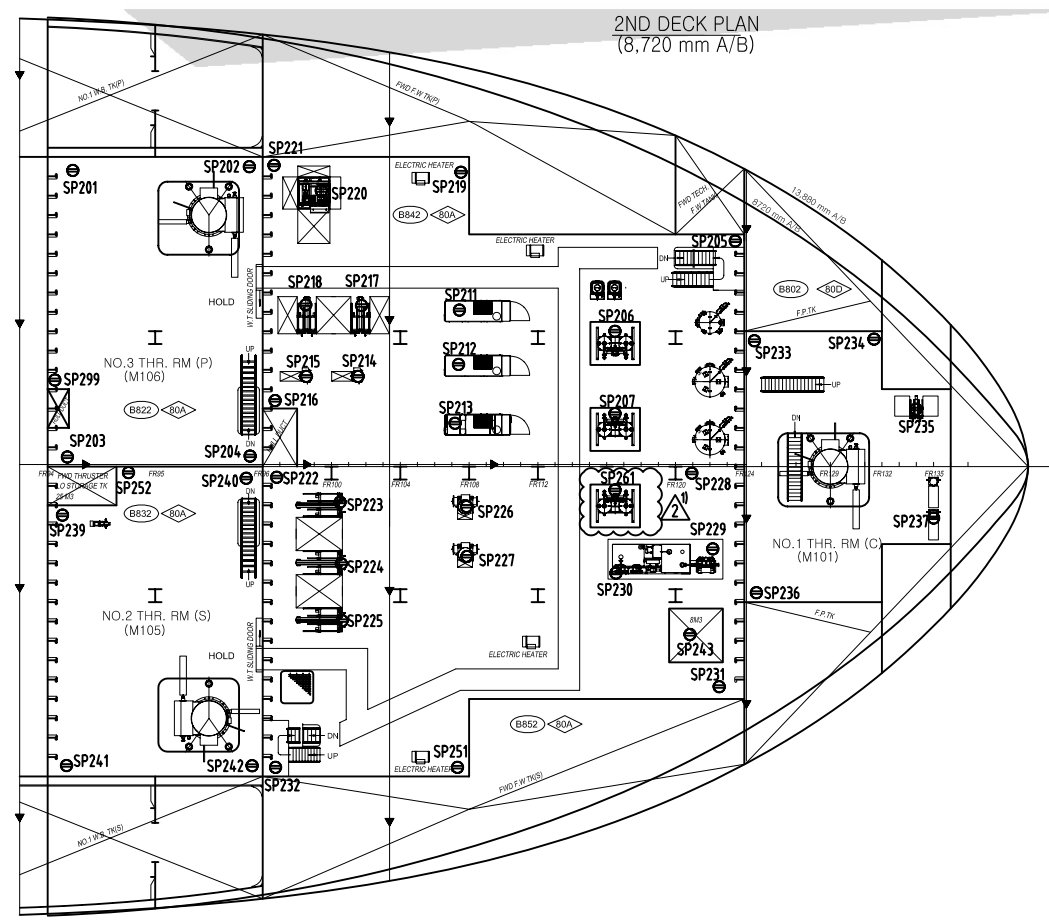
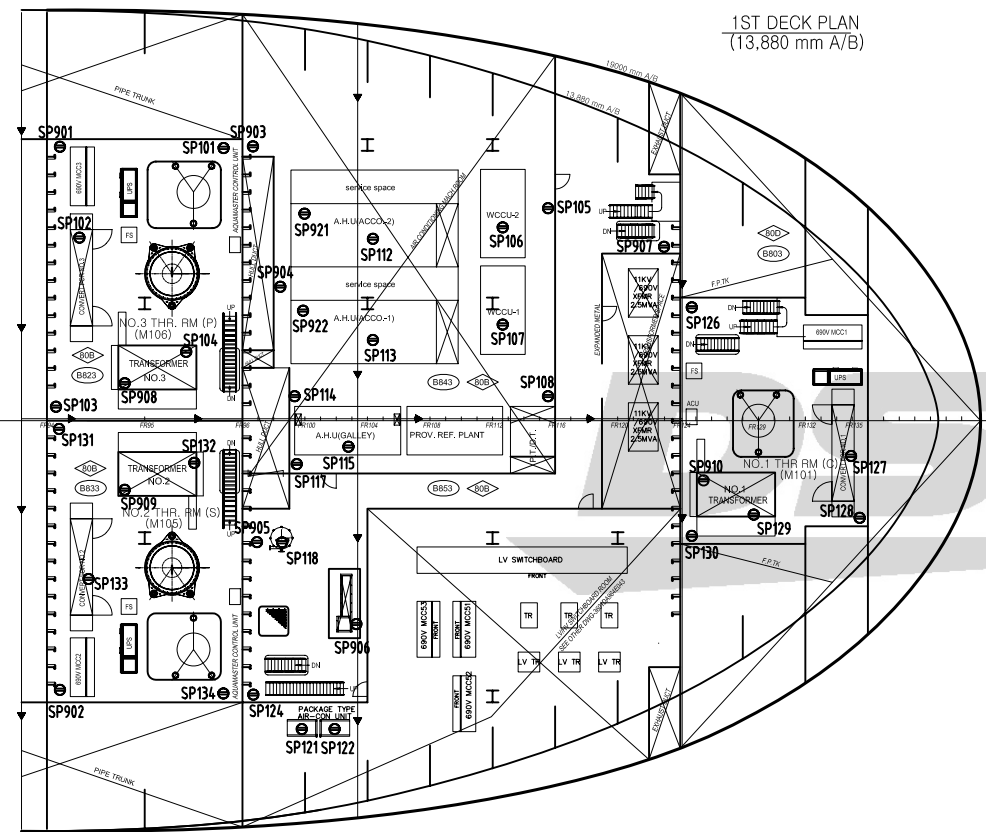
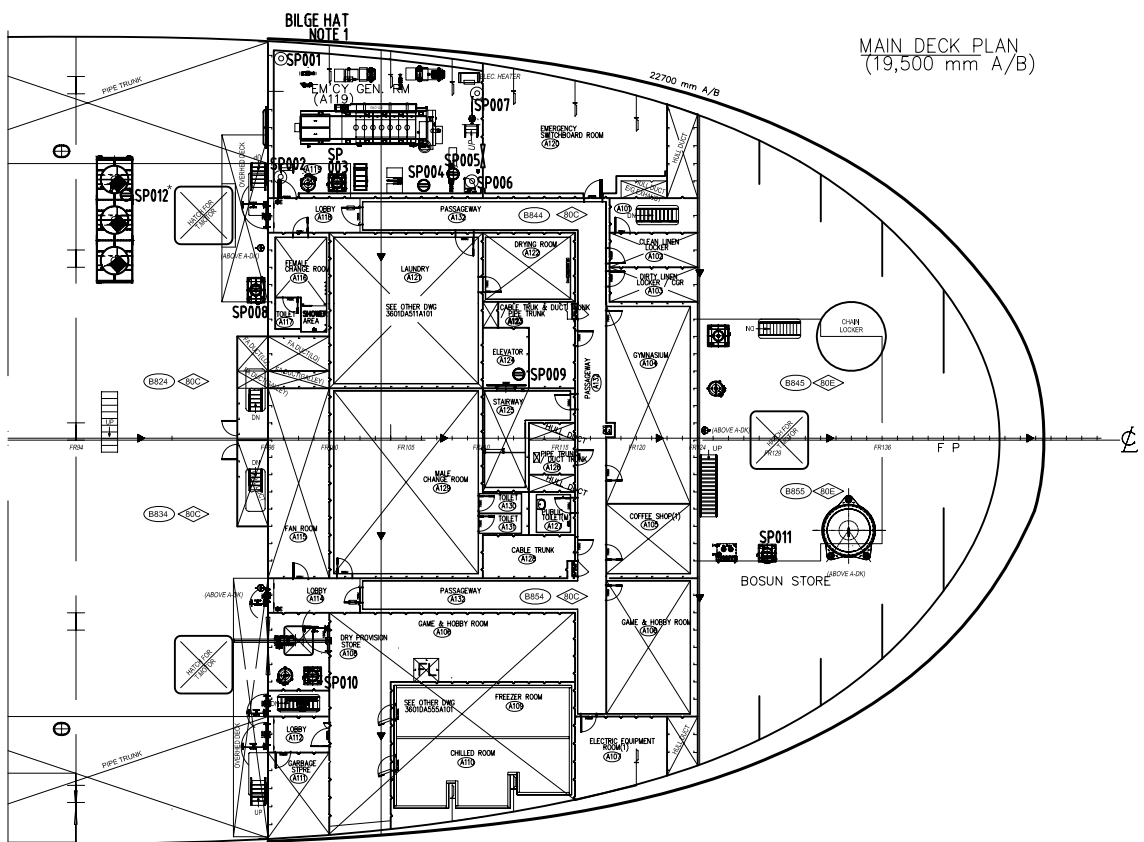
NOTES
 1) -

REVISION HISTORY

TAGNO.	DESCRIPTION	TYPE	CAPACITY
-	-	-	-
-	-	-	-

REV.	DATE	NOTE	DWN	CHK	CHIEF	APP.BY
2	2011.03.18	ISSUED FOR REVISION	JYK	TLJ		HCL
1	2010.10.29	ISSUED FOR REVISION	JYK	TLJ	HCL	SDH
0	2010.07.23	APPROVED FOR CONSTRUCTION	JYK	HSP	HCL	SDH
A	2010.06.18	ISSUED FOR APPROVAL	JYK	HSP	HCL	SDH

CHECK		PROJ. NO. 3610		DWG. NO. DA804P002		REV. NO. 2/8	
DAEWOO SHIPBUILDING & MARINE ENGINEERING CO., LTD.		DAEWOO SHIPBUILDING & MARINE ENGINEERING CO., LTD.		DAEWOO SHIPBUILDING & MARINE ENGINEERING CO., LTD.		DAEWOO SHIPBUILDING & MARINE ENGINEERING CO., LTD.	



GENERAL NOTES
 G1) THE EXACT NUMBER OF SCUPPER TO BE UPDATED WHEN THE PIPING ROUTING IS FIXED.
 G2) FOR LOCATION OF DRAIN SCUPPERS, PLEASE REFER TO PIPING ARRANGEMENT DRAWING AT DETAIL DESIGN STAGE.

NOTES
 1) BILGE HAT TO BE INSTALLED EACH CORNER OF EG ROOM (SP 001, SP002, SP006, SP007), SEE ALSO NEXT PAGE
 2) THE SYMBOL "*" DENOTES THAT SCUPPERS UNDER DRIP TRAY (EX. : SP012*)

HOLD
 - THE NUMBER OF SCUPPER TO BE ADDED/DELETED BY COMMENT FROM PIPING PART.

REVISION HISTORY
 1) ADDED DRAIN SCUPPER FOR ADDITIONAL CONTROL AIR DRYER AS PER COP-011. (11.01.17)

TAGNO.	DESCRIPTION	TYPE	CAPACITY
-	-	-	-
-	-	-	-

REV.	DATE	NOTE	DWN	CHK	CHIEF	APP.BY
2	2011.03.18	ISSUED FOR REVISION	JYK	TLJ		HCL
1	2010.10.29	ISSUED FOR REVISION	JYK	TLJ	HCL	SDH
0	2010.07.23	APPROVED FOR CONSTRUCTION	JYK	HSP	HCL	SDH
A	2010.06.18	ISSUED FOR APPROVAL	JYK	HSP	HCL	SDH

CHECK		PROJ. NO. 3610		DWN BY (TEL.7859) J.Y.KIM		TITLE : PIPING & INSTRUMENT DIAGRAM NON-CONTAMINATED DRAIN FWD SCUPPER SYSTEM (PLAN) SHEET 3 / 8	
DEPT. OUTFITTING DESIGN TEAM 2		DATE 2011.03.18	SCALE NONE	DWG. NO. DA804P002	REV. NO. 2		

GENERAL NOTES
 G1) THE EXACT NUMBER OF SCUPPER TO BE UPDATED WHEN THE PIPING ROUTING IS FIXED.
 G2) FOR LOCATION OF DRAIN SCUPPERS, PLEASE REFER TO PIPING ARRANGEMENT DRAWING AT DETAIL DESIGN STAGE.

NOTES
 1) THE SYMBOL "*" DENOTES THAT SCUPPERS UNDER DRIP TRAY (EX. : SP208*)
 2) DELETED.

REVISION HISTORY
 1) ADDED DRAIN SCUPPER FOR ADDITIONAL STARTING AIR COMP. AS PER COP-014.(2011.01.13)
 2) CHANGED THE NAME OF ROOM CORRECTLY AS PER COP-008.(2011.01.20)
 3) ADDED SCUPPER BELOW AUTO DRAIN TRAP AS PER OWNER'S COMMENT. (2011.02.01)

TAGNO.	DESCRIPTION	TYPE	CAPACITY
-	-	-	-
2	2011.03.18	ISSUED FOR REVISION	JYK TLJ HCL
1	2010.10.29	ISSUED FOR REVISION	JYK TLJ HCL SDH
0	2010.07.23	APPROVED FOR CONSTRUCTION	JYK HSP HCL SDH
A	2010.06.18	ISSUED FOR APPROVAL	JYK HSP HCL SDH
REV.	DATE	NOTE	DWN CHK CHIEF APP.BY

CHECK		DATE		SCALE		DWG. NO.		REV. NO.	
PROJ. NO.	DWN BY (TEL. #859)	TITLE : PIPING & INSTRUMENT DIAGRAM NON-CONTAMINATED DRAIN AFT SCUPPER SYSTEM (PLAN) SHEET 5 / 8							
3610	J.Y.KIM	DATE	SCALE	DWG. NO.	REV. NO.				
DAEWOO	OUTFITTING DESIGN TEAM 2	2011.03.18	NONE	DA804P002					

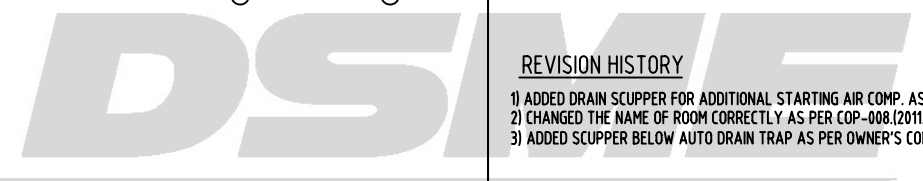
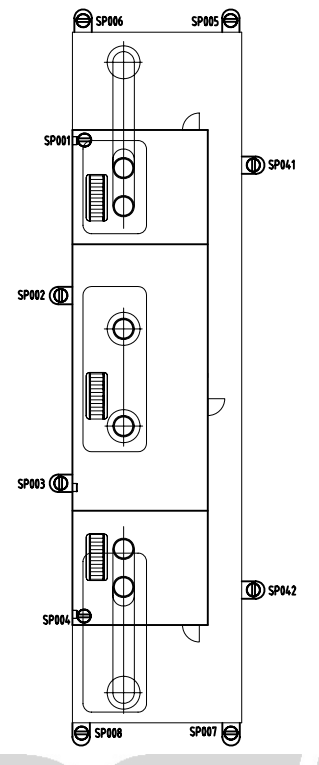
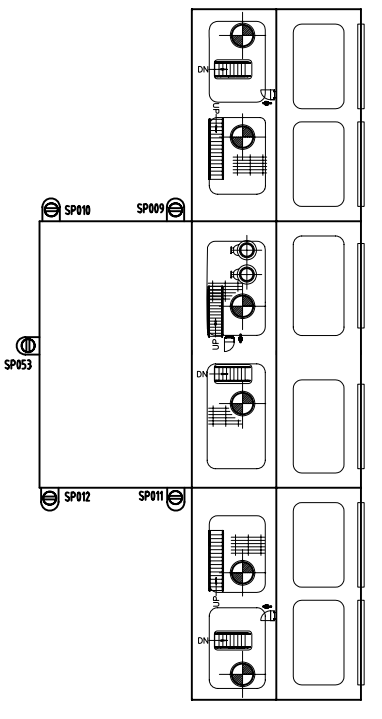
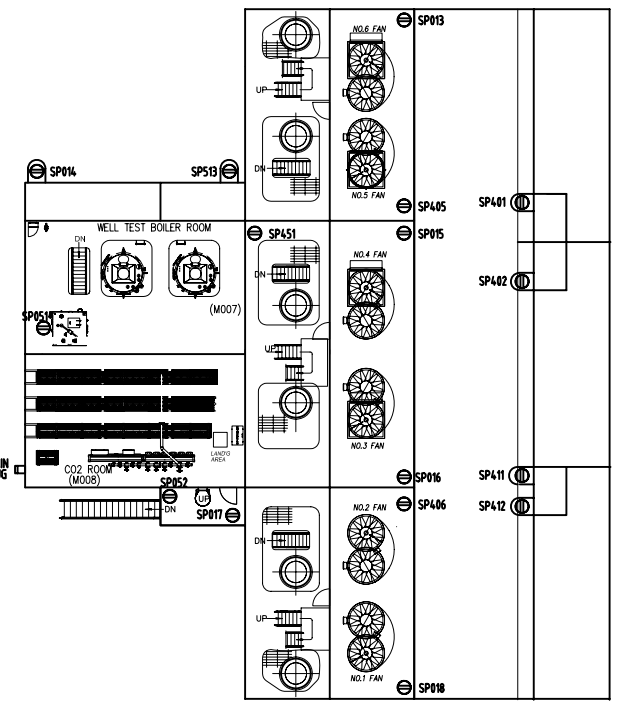
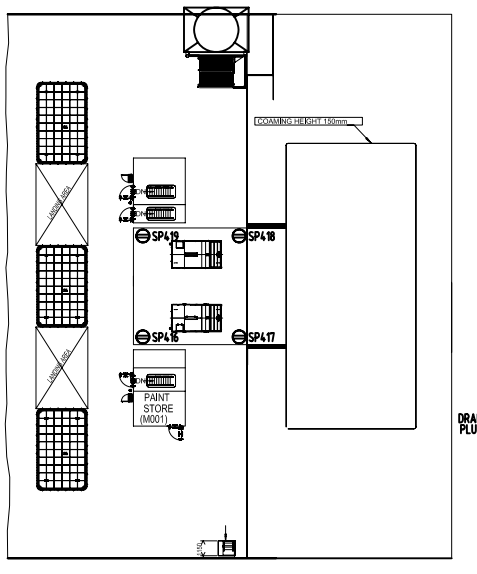
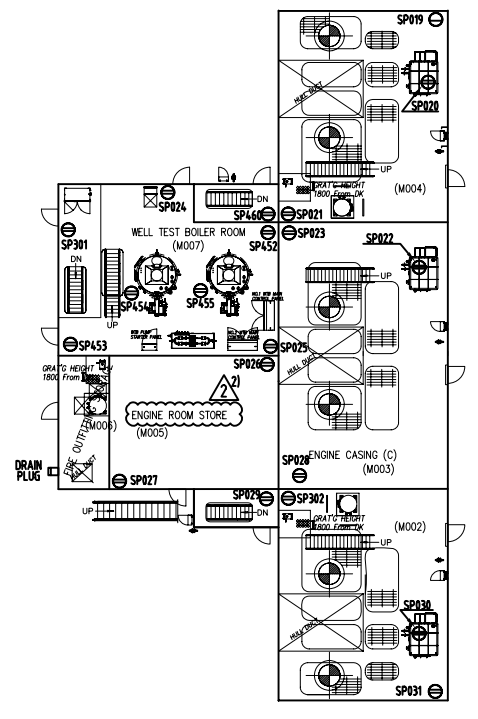
MAIN DECK(19,500 mm A/B)
— PLAN —

WELL TEST AREA
23,500 mm A/B

'A'— DECK PLAN
24,000 mm A/B

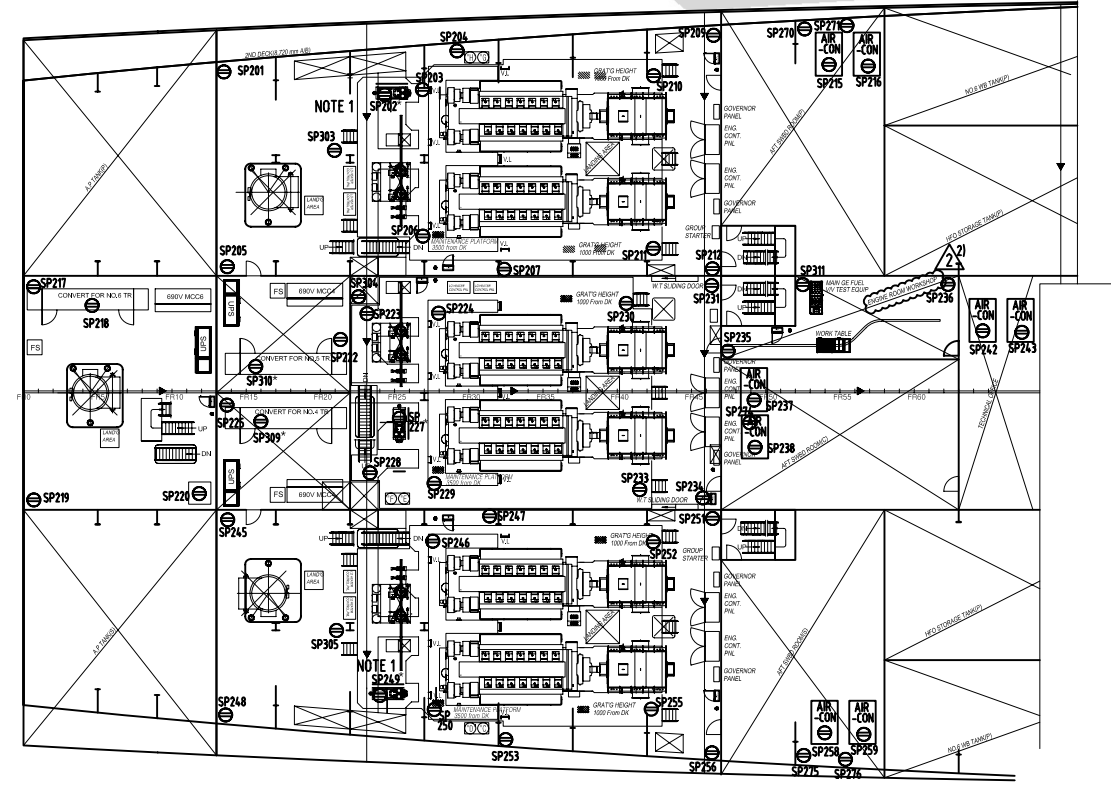
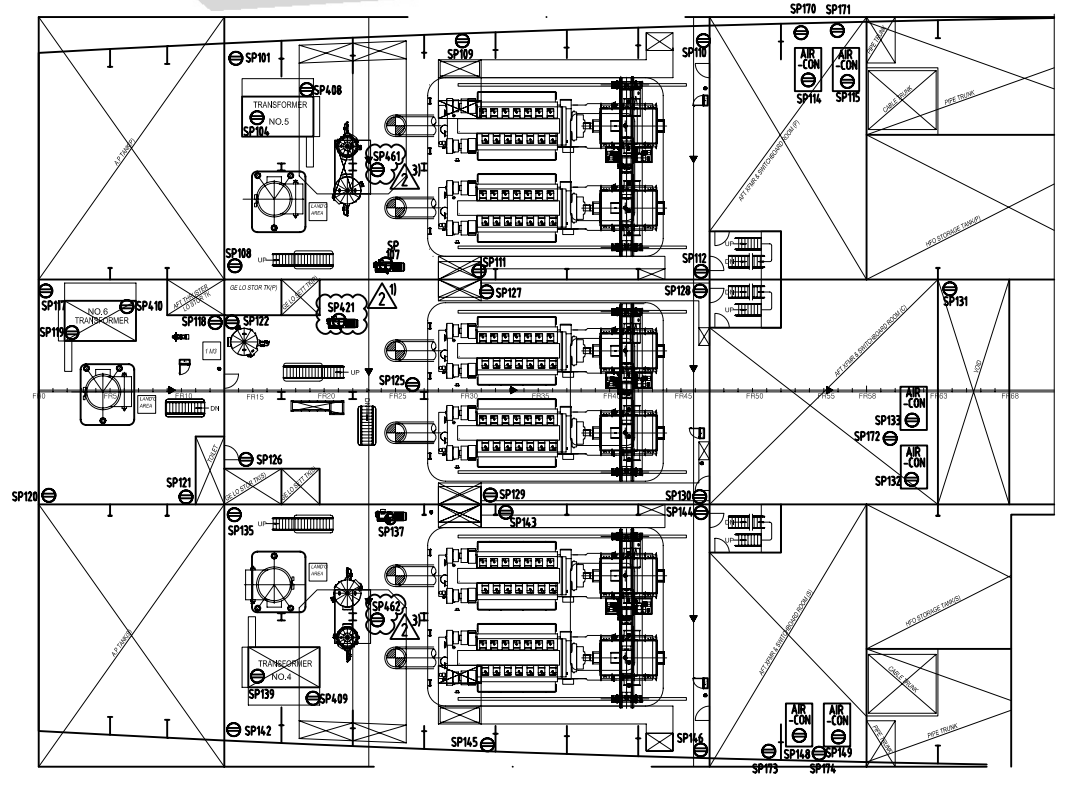
'B'— DECK PLAN
28,000 mm A/B

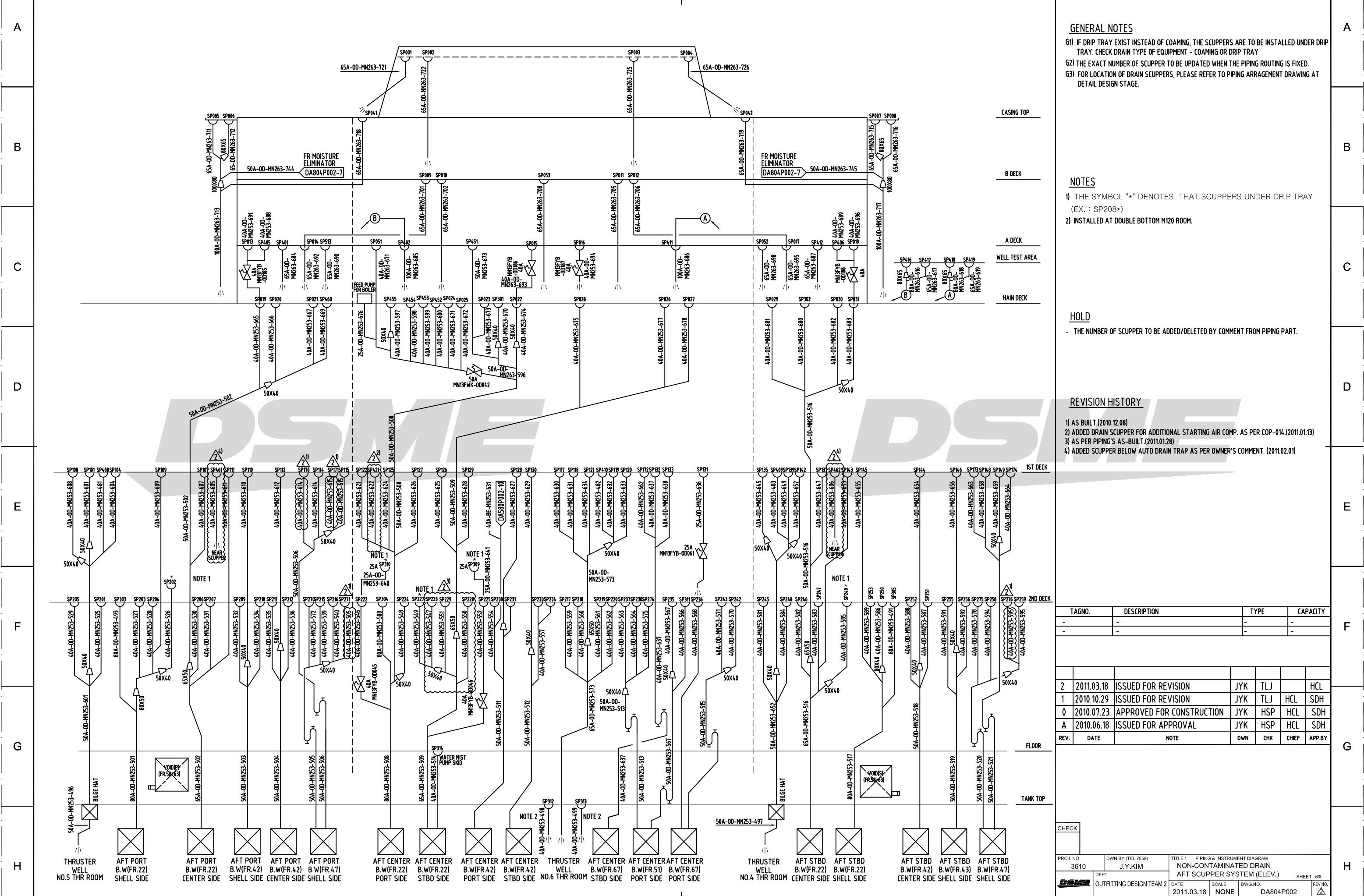
CASING TOP
32,000 mm A/B



1ST DECK (14,740 mm A/B)

2ND DECK (9,580 mm A/B)





GENERAL NOTES

- G1) IF DRIP TRAY EXIST INSTEAD OF COAMING, THE SCUPPERS ARE TO BE INSTALLED UNDER DRIP TRAY. CHECK DRAIN TYPE OF EQUIPMENT - COAMING OR DRIP TRAY
- G2) THE EXACT NUMBER OF SCUPPER TO BE UPDATED WHEN THE PIPING ROUTING IS FIXED.
- G3) FOR LOCATION OF DRAIN SCUPPERS, PLEASE REFER TO PIPING ARRANGEMENT DRAWING AT DETAIL DESIGN STAGE.

NOTES

- 1) THE SYMBOL "*" DENOTES THAT SCUPPERS UNDER DRIP TRAY (EX. : SP208*)
- 2) INSTALLED AT DOUBLE BOTTOM M120 ROOM.

HOLD

- THE NUMBER OF SCUPPER TO BE ADDED/DELETED BY COMMENT FROM PIPING PART.

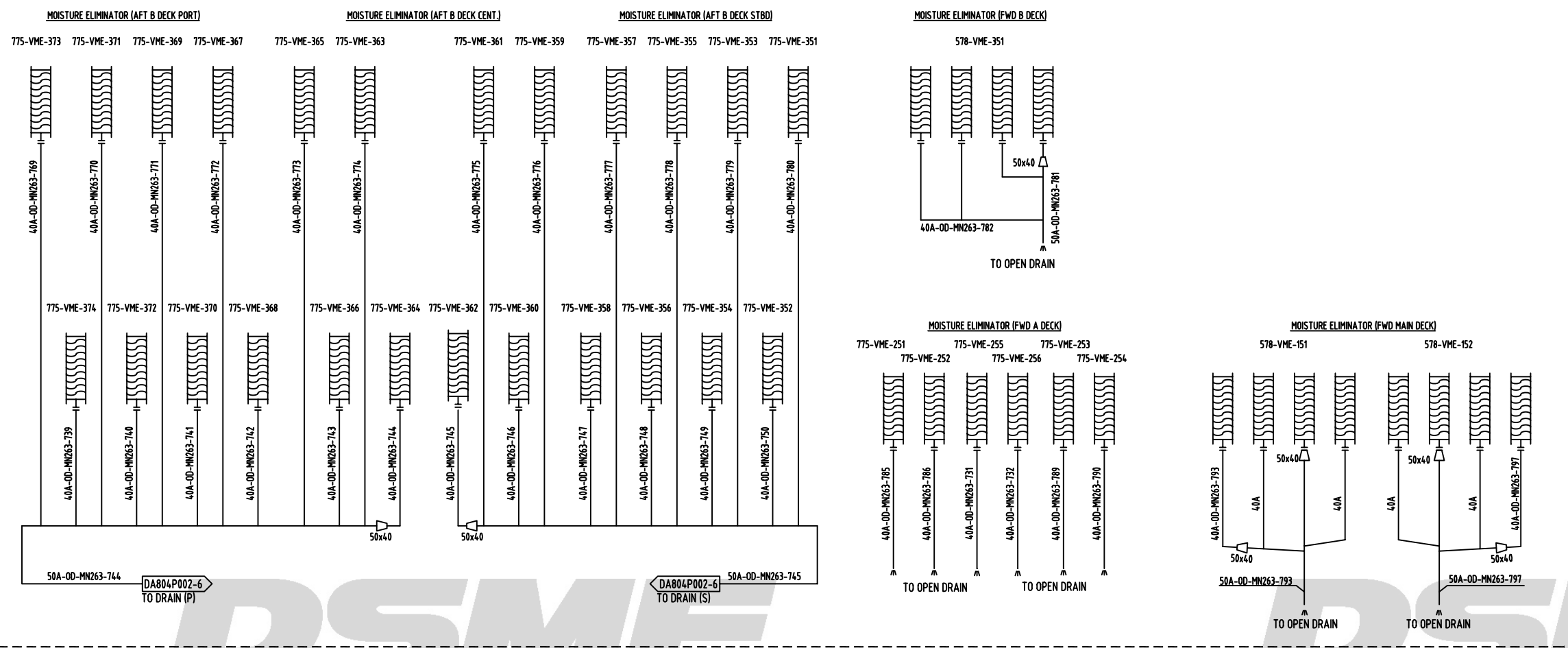
REVISION HISTORY

- 1) AS BUILT.(2010.12.08)
- 2) ADDED DRAIN SCUPPER FOR ADDITIONAL STARTING AIR COMP. AS PER COP-014.(2011.01.13)
- 3) AS PER PIPING'S AS-BUILT.(2011.01.28)
- 4) ADDED SCUPPER BELOW AUTO DRAIN TRAP AS PER OWNER'S COMMENT. (2011.02.01)

TAGNO.	DESCRIPTION	TYPE	CAPACITY			
-	-	-	-			
-	-	-	-			
2	2011.03.18	ISSUED FOR REVISION	JYK TLJ HCL			
1	2010.10.29	ISSUED FOR REVISION	JYK TLJ HCL SDH			
0	2010.07.23	APPROVED FOR CONSTRUCTION	JYK HSP HCL SDH			
A	2010.06.18	ISSUED FOR APPROVAL	JYK HSP HCL SDH			
REV.	DATE	NOTE	DWN	CHK	CHIEF	APP.BY

CHECK

PROJ. NO. 3610	DWN BY (TEL.7859) J.Y.KIM	TITLE PIPING & INSTRUMENT DIAGRAM NON-CONTAMINATED DRAIN AFT SCUPPER SYSTEM (ELEV.)	SHEET 6/8
DEPT OUTFITTING DESIGN TEAM 2	DATE 2011.03.18	SCALE NONE	DWG. NO. DA804P002
DAEWOO SHIPBUILDING & MARINE ENGINEERING CO., LTD.			



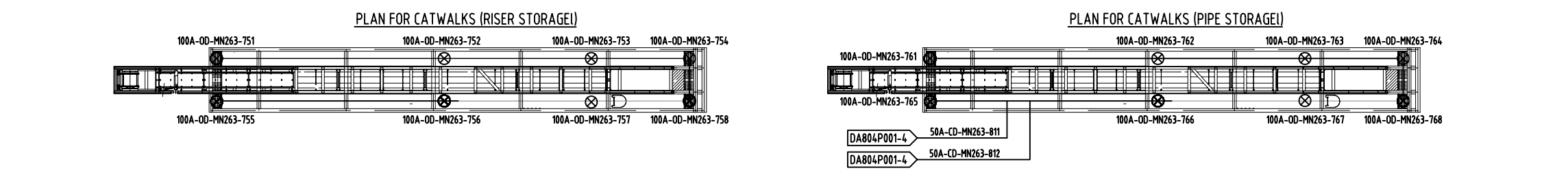
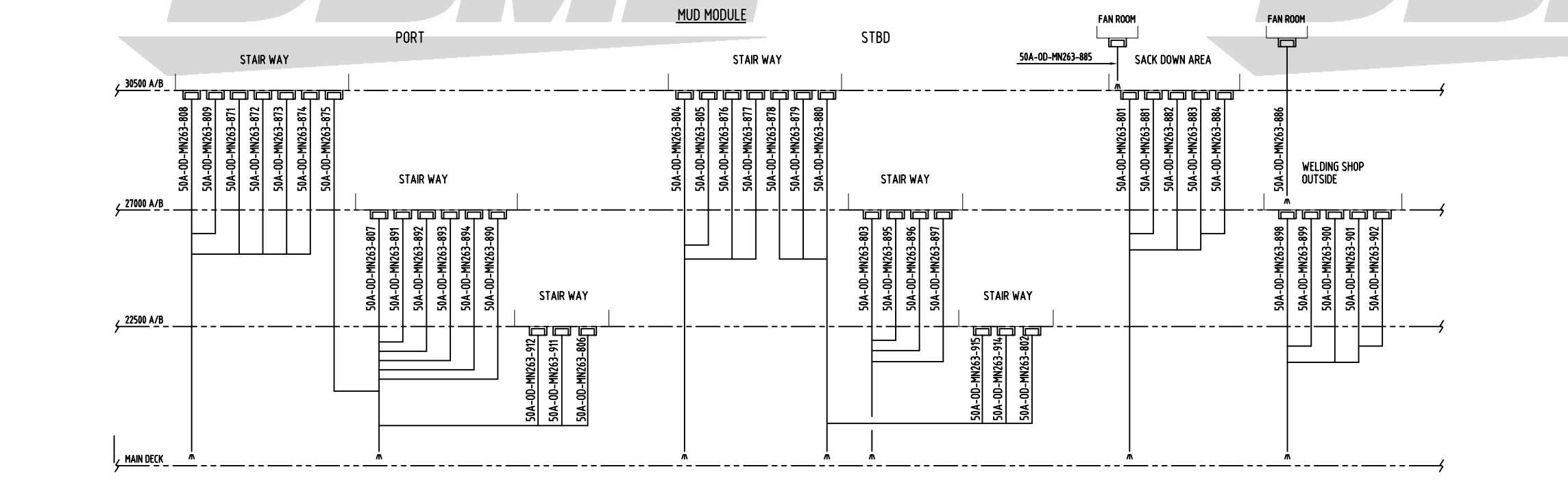
GENERAL NOTES
 G1) THE EXACT NUMBER OF SCUPPER TO BE UPDATED WHEN THE PIPING ROUTING IS FIXED.
 G2) FOR LOCATION OF DRAIN SCUPPERS, PLEASE REFER TO PIPING ARRANGEMENT DRAWING AT
 DETAIL DESIGN STAGE.

NOTES
 1)

REVISION HISTORY

TAGNO.	DESCRIPTION	TYPE	CAPACITY
-	-	-	-
-	-	-	-

REV.	DATE	NOTE	DWN	CHK	CHIEF	APP.BY
2	2011.03.18	ISSUED FOR REVISION	JYK	TLJ	HCL	
1	2010.10.29	ISSUED FOR REVISION	JYK	TLJ	HCL	SDH
0	2010.07.23	APPROVED FOR CONSTRUCTION	JYK	HSP	HCL	SDH
A	2010.06.18	ISSUED FOR APPROVAL	JYK	HSP	HCL	SDH



CHECK

PROJ. NO. 3610	DWY. BY (TEL. 7859) J.Y.KIM	TITLE NON-CONTAMINATED DRAIN CRANE AND CATWALKS (TYPICAL)	SHEET 7 / 8
DEPT. OUTFITTING DESIGN TEAM 2	DATE 2011.03.18	SCALE NONE	DWG. NO. DA804P002

DAEWOO SHIPBUILDING & MARINE ENGINEERING CO., LTD.

GENERAL NOTES

G1) ---

NOTES

I1) ---

L.Q AREA				MUD MODULE			
DUCT NO.	BLOCK NO.	FRAME	LOUNGE	DUCT NO.	BLOCK NO.	FRAME	LOUNGE
1	932	95-1150	-12	31	468	94	13

FWD M/S			
DUCT NO.	BLOCK NO.	FRAME	LOUNGE
41	853	122	-12
44	857	125	-9
43	844	112	20
46	824	94	16
45	822	96	1
42	824	96	13
47	834	94	-13
48	803	124	7
49	846	125	18
50	856	125	-18

REVISION HISTORY

TAGNO.	DESCRIPTION	TYPE	CAPACITY
-	-	-	-
-	-	-	-

REV.	DATE	NOTE	DWN	CHK	CHIEF	APP.BY
2	2011.03.18	ISSUED FOR REVISION	JYK	TLJ		HCL
1	2010.10.29	ISSUED FOR REVISION	JYK	TLJ	HCL	SDH
0	2010.07.23	APPROVED FOR CONSTRUCTION	JYK	HSP	HCL	SDH
A	2010.06.18	ISSUED FOR APPROVAL	JYK	HSP	HCL	SDH

CHECK

PROJ. NO. 3610	DWN BY (TEL 7859) J.Y.KIM	TITLE : PIPING & INSTRUMENT DIAGRAM NON-CONTAMINATED DRAIN HULL DUCT DRAIN	DEPT OUTFITTING DESIGN TEAM 2	DATE 2011.03.18	SCALE NONE	DWG. NO. DA804P002	SHEET 8 / 8
-------------------	------------------------------	--	----------------------------------	--------------------	---------------	-----------------------	-------------

