

GENERAL NOTES
 G1) BASIC DESIGN CONCEPT.
 THIS SYSTEM CAN BE TREATED AS NORMAL DRAIN PLUS THE FIRST 5 MINUTES OF ANY KIND OF EMULSION, SO THAT NO OIL OR OVERBOARD.

- NOTES**
- 1) THE OVERBOARD DRAIN DISCHARGE PIPE TO BE ARRANGED WITHOUT LIQUID POCKETS.
 - 2) LIQUID SEAL HEIGHT 1.5M
 - 3) MANUAL SAMPLE VALVE
 - 4) LEVEL SWITCH TO BE INSTALLED 1M ABOVE THE END OF THE INLET PIPE TO PROTECT LEAK SEAL.
 - 5) FLUSHING PIPE ARRANGEMENT. THE PIPE TO BE FURNISHED WITH AN ADEQUATE NO. OF FLUSHING NOZZLES.
 - 6) HAZARDOUS AREA DRAIN TANK ;
 - HH(98%), XV-101 TO BE IN OVERBOARD DIRECTION.
 - H(70%, STAND-BY START)
 - L(35%, DUTY START/STAND-BY STOP)
 - LL(15%, DUTY STOP AND XV-101 TO BE IN SOLID TREATMENT TK DIRECTION)
 - THE PUMPS TO BE STOPPED AT HH LEVEL OF DRAIN HOLDING TANK(REF. DA804P001-2).
 - 7) OVERFLOW FROM CHAMBERS TO DRAIN TANKS TO BE ROUTED TO PREVENT SPLASH
 - 8) TO BE LOCATED AT HAZARDOUS ZONE OR OPEN DECK.
 - 9) FOR SEA WATER CONNECTION, FOR FLEXIBLE HOSE TO BE USED AND THE LENGTH TO BE LESS THAN 10METER.
 - 10) FOR SLUDGE/RESIDUE PUMP CONNECTION, FLEXIBLE HOSE TO BE USED AND THE LENGTH TO BE LESS THAN 10METER.
 - 11) AUTO OVERRIDE TO BE PROVIDED AND MANUAL CONTROL TO BE PROVIDED AT LOCAL AND REMOTE SIDE.
 - 12) SLUDGE/RESIDUE TO BE TRANSFERRED TO WASTE OIL TANK OR CUTTING CONTAINER AREA.
 - 13) SHORT PIECE FOR FLUSHING.
 - 14) SOL. VALVE TO BE ACTIVATED FROM MCC.
 - 15) USED ONLY FOR EMERGENCY CONDITION

REVISION HISTORY

- 1) MODIFIED OPERATING CONCEPT AND PIPE SPECIFICATION. (10.11.17)
- 2) AS PER OWNER'S REQUEST.(2011.02.08)
- 3) MODIFIED AS PER ACTUAL PIPING LAYOUT.(2011.03.22)

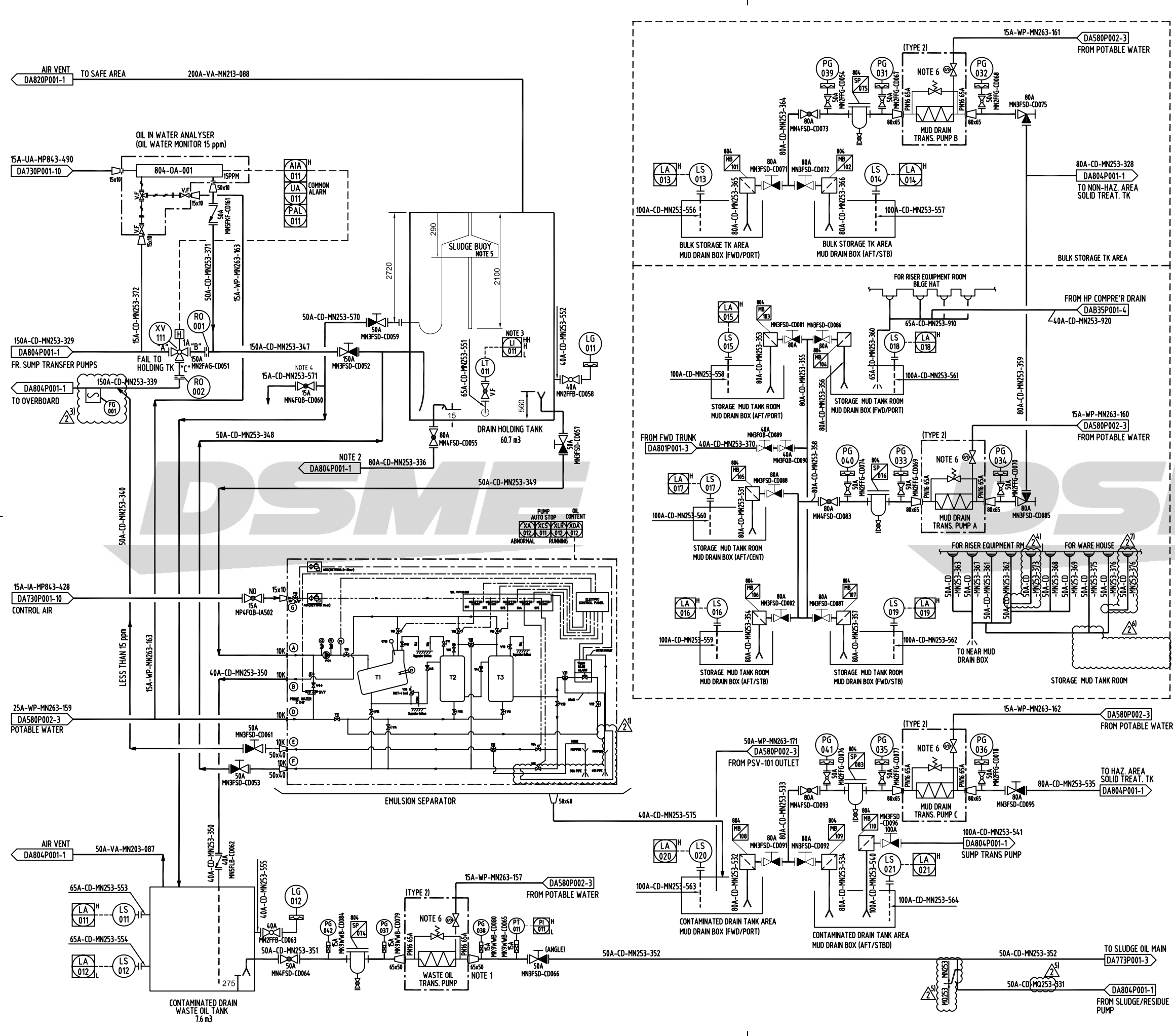
TAGNO.	DESCRIPTION	TYPE	CAPACITY
A81-PP-001-A/B/C/D	SUMP TRANSFER PUMP A/B/C/D	CENTRIFUGAL	20m ³ /h x 3bar
A81-PP-002	SLUDGE/RESIDUE PUMP	MONO SCREW	20m ³ /h x 13bar

REV.	DATE	NOTE	DWN	CHK	CHIEF	APP.BY
2	2011.04.15	ISSUED FOR REVISION	JYK	YKR	HCL	HCL
1	2010.10.28	ISSUED FOR REVISION	JYK	JJC	HCL	SDH
0	2010.05.24	APPROVED FOR CONSTRUCTION	JYK	BYJ	HCL	SDH
A	2010.04.26	ISSUED FOR APPROVAL	JYK	BYJ	HCL	SDH

DAEWOO SHIPBUILDING & MARINE ENGINEERING CO., LTD.

- ISSUED FOR INFORMATION
 - ISSUED FOR APPROVAL
 - ISSUED FOR CONSTRUCTION
- DATE

PROJ. NO. 3609	DIVN BY (TEL.7859) J.Y.KIM	TITLE : PID OF CONTAMINATED DRAIN SYSTEM	SHEET 1 / 6
DEPT OUTFITTING DESIGN TEAM 2	DATE 2011.04.15	SCALE NONE	DWG. NO. DA804P001



GENERAL NOTES
G1) ---

NOTES

- 1) LEVEL LOW ALARM MONITORING : PUMP STOP (MANUALLY)
LEVEL HIGH ALARM MONITORING : PUMP START (MANUALLY)
- 2) FOR SLUDGE/RESIDUE PUMP CONNECTION (REF. DA804P001-1).
- 3) HH OF DRAIN HOLDING TANK ; SUMP TRANSFER PUMPS A/B/C/D TO BE STOPPED (RFF. DA804P001-1).
LEVEL LOW : THE EMULSION SEPARATOR TO BE STOPPED AUTOMATICALLY
LEVEL HIGH : THE EMULSION SEPARATOR TO BE STARTED MANUALLY
- 4) MANUAL SAMPLE VALVE
- 5) NORMAL RATES ARE BETWEEN 2 - 6M3/HOUR.
- 6) SOL. VALVE TO BE ACTIVATED FROM MCC.

DRAIN HOLDING TANK 60.7 m³	HAZARDOUS AREA SOLID TREAT. TK 12.1 m³	NON-HAZARDOUS AREA SOLID TREAT. TK 24.2 m³
WASTE OIL TANK 7.6 m³	HAZARDOUS AREA DRAIN TANK 22.0 m³	NON-HAZARDOUS AREA DRAIN TANK 44.1 m³

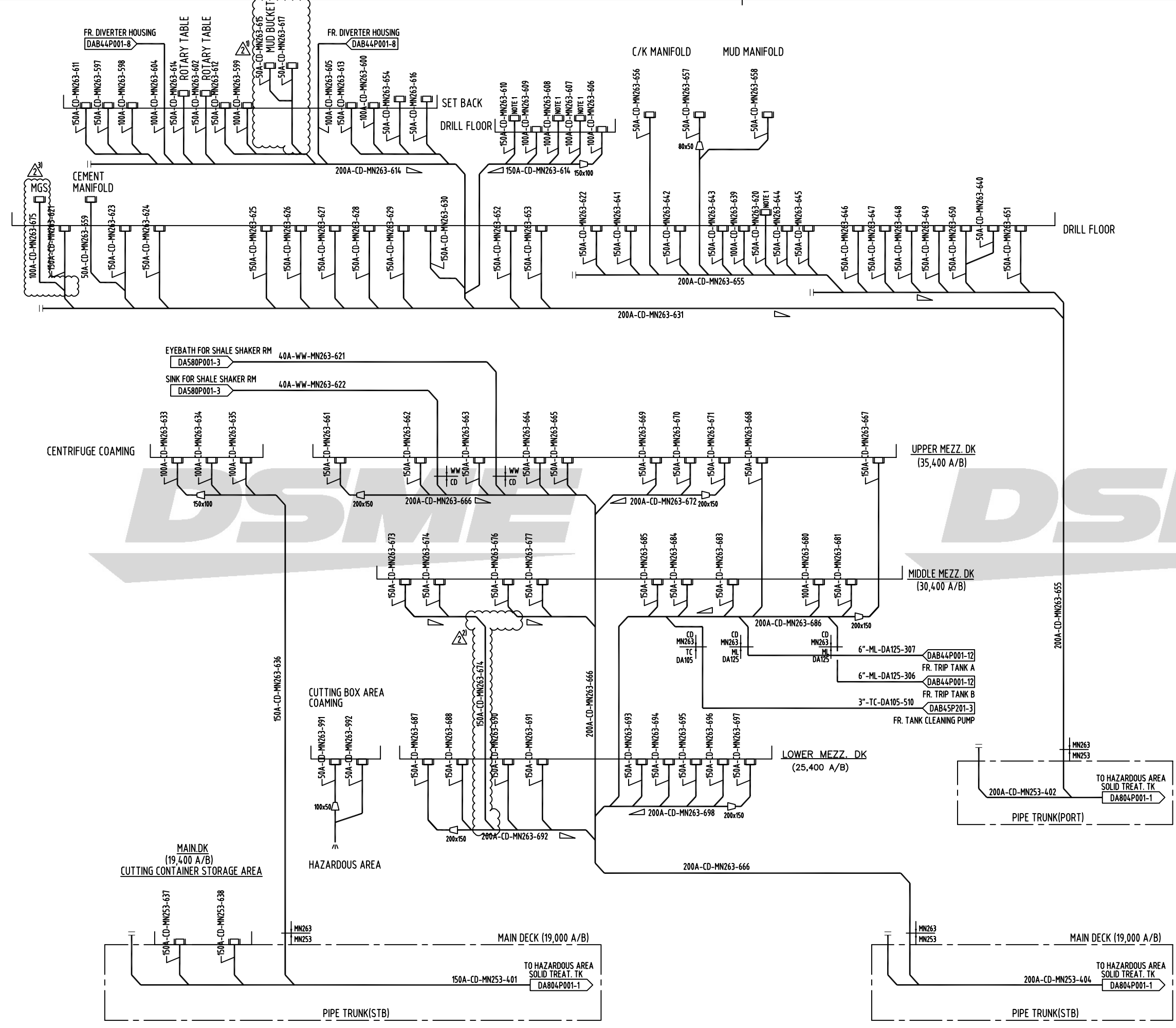
REVISION HISTORY

- 1) MODIFIED AS PER LATEST VENDOR DWG. (10.11.04)
- 2) MODIFIED OPERATING CONCEPT AND PIPE SPECIFICATION. (10.11.17)
- 3) ADDED FLOW METER AS PER OWNER'S REQUEST. COP-0027. (10.12.24)
- 4) MODIFIED AS PER ACTUAL PIPING COMMENT. (2011.03.17)
- 5) MODIFIED AS PER ACTUAL PIPING LAYOUT. (2011.03.22)
- 6) DELETED. (2011.04.08)
- 7) ADD SCUPPER. (2011.04.07)

TAGNO.	DESCRIPTION	TYPE	CAPACITY
A92-PP-001	WASTE OIL TRANS. PUMP	MONO SCREW	5m³/h x 4.5bar
A81-PV-001	EMULSION SEPARATOR		5m³/h
A81-PP-004-A/B/C	MUD DRAIN TRANSFER PUMP A/B/C	MONO SCREW	5m³/h x 3bar
80A-0A-001	OIL IN WATER ANALYZER		
77A-SE-001	SLUDGE BUOY		

REV.	DATE	NOTE	DWN	CHK	CHIEF	APP. BY
2	2011.04.15	ISSUED FOR REVISION	JYK	YKR	HCL	HCL
1	2010.10.28	ISSUED FOR REVISION	JYK	JJC	HCL	SDH
0	2010.05.24	APPROVED FOR CONSTRUCTION	JYK	BYJ	HCL	SDH
A	2010.04.26	ISSUED FOR APPROVAL	JYK	BYJ	HCL	SDH

CHECK		TITLE : PIPING & INSTRUMENT DIAGRAM PID OF CONTAMINATED DRAIN SYSTEM		SHEET 2 / 6	
PROJ. NO. 3609	DWNN BY (TEL. 7859) J.Y.KIM	DATE 2011.04.15	SCALE NONE	DWG. NO. DA804P001	REV. NO. NA
DEPT OUTFITTING DESIGN TEAM 2		DAEWOO SHIPBUILDING & MARINE ENGINEERING CO., LTD.			



GENERAL NOTES
 G1) THE EXACT NUMBER OF DRAIN SCUPPER TO BE UPDATED WHEN THE PIPING ROUTING IS FIXED.
 G2) FOR LOCATION OF DRAIN SCUPPERS, PLEASE REFER TO PIPING ARRANGEMENT DRAWING AT DETAIL DESIGN STAGE.

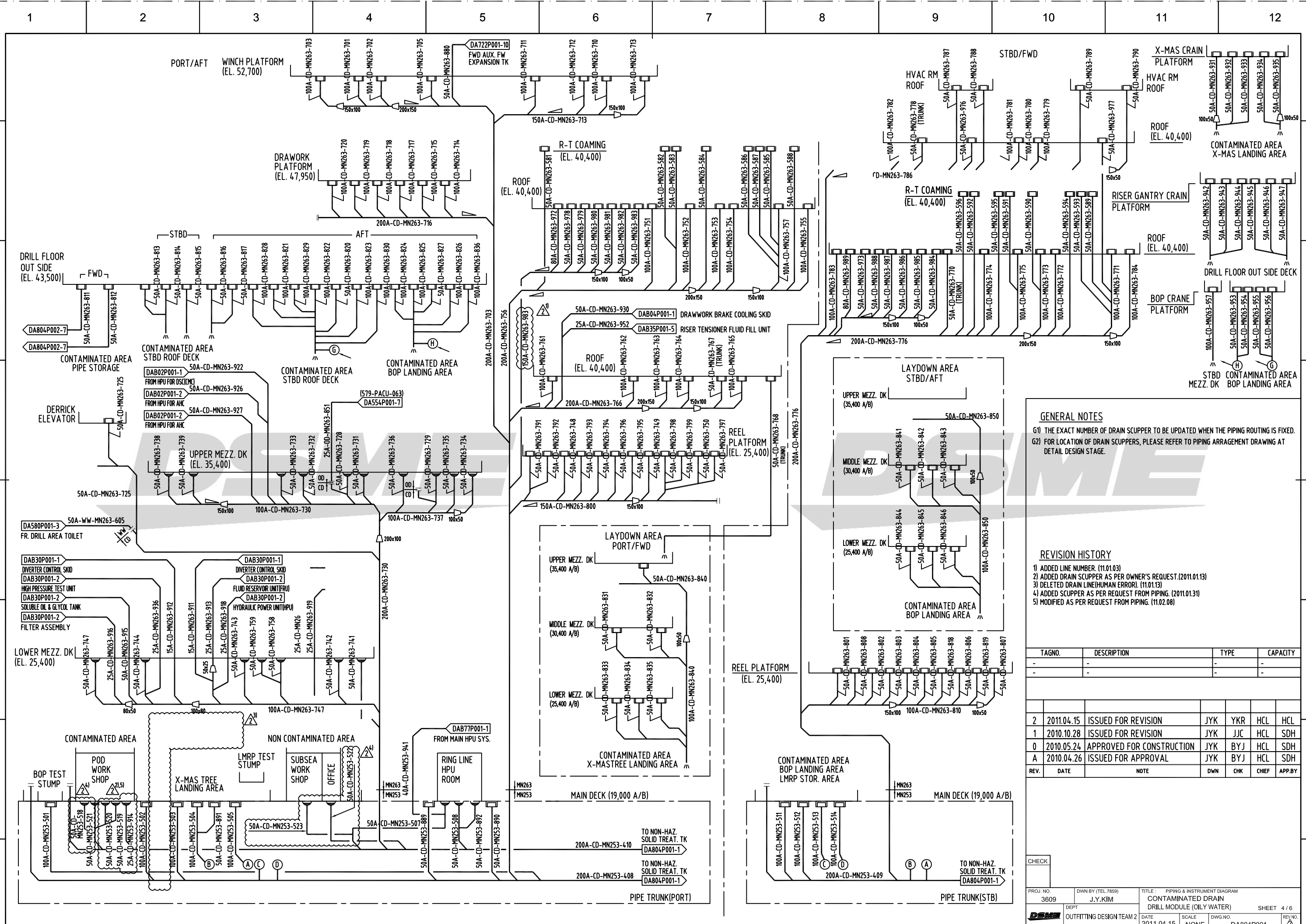
NOTES
 1) DRAIN FROM RAIL GUTTER WAY.

REVISION HISTORY
 1) ADDED DRAIN SCUPPER AS PER OWNER'S REQUEST. (11.01.03)
 2) AS PER ACTUAL PIPING LAYOUT. (11.01.03)
 3) AS PER PUNCH OF PREVIOUS PROJECT. (2011.01.11)

TAGNO.	DESCRIPTION	TYPE	CAPACITY
-	-	-	-
-	-	-	-

REV.	DATE	NOTE	DWN	CHK	CHIEF	APP. BY
2	2011.04.15	ISSUED FOR REVISION	JYK	YKR	HCL	HCL
1	2010.10.28	ISSUED FOR REVISION	JYK	JJC	HCL	SDH
0	2010.05.24	APPROVED FOR CONSTRUCTION	JYK	BYJ	HCL	SDH
A	2010.04.26	ISSUED FOR APPROVAL	JYK	BYJ	HCL	SDH

CHECK		PROJ. NO. 3609		DWN BY (TEL. 7859) J.Y.KIM		TITLE : PIPING & INSTRUMENT DIAGRAM CONTAMINATED DRAIN DRILL MODULE (HAZ.)		SHEET 3 / 6	
DEPT. OUTFITTING DESIGN TEAM 2		DATE 2011.04.15		SCALE NONE		DWG. NO. DA804P001		REV. NO.	



GENERAL NOTES

- G1) THE EXACT NUMBER OF DRAIN SCUPPER TO BE UPDATED WHEN THE PIPING ROUTING IS FIXED.
- G2) FOR LOCATION OF DRAIN SCUPPERS, PLEASE REFER TO PIPING ARRANGEMENT DRAWING AT DETAIL DESIGN STAGE.

REVISION HISTORY

- 1) ADDED LINE NUMBER. (11.01.03)
- 2) ADDED DRAIN SCUPPER AS PER OWNER'S REQUEST. (2011.01.13)
- 3) DELETED DRAIN LINE(HUMAN ERROR). (11.01.13)
- 4) ADDED SCUPPER AS PER REQUEST FROM PIPING. (2011.01.31)
- 5) MODIFIED AS PER REQUEST FROM PIPING. (11.02.08)

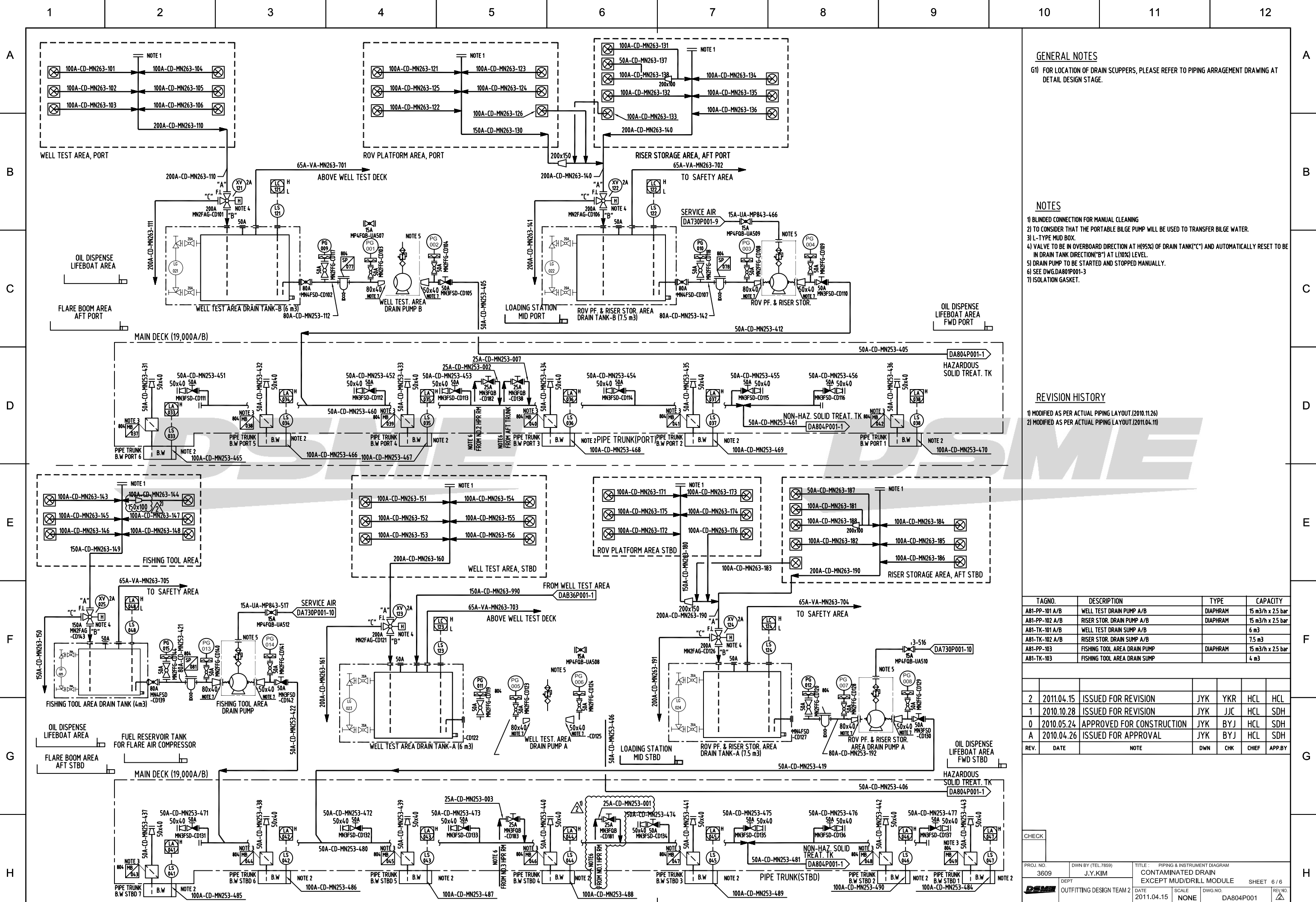
TAGNO.	DESCRIPTION	TYPE	CAPACITY
-	-	-	-
-	-	-	-

REV.	DATE	NOTE	DWN	CHK	CHIEF	APP.BY
2	2011.04.15	ISSUED FOR REVISION	JYK	YKR	HCL	HCL
1	2010.10.28	ISSUED FOR REVISION	JYK	JJC	HCL	SDH
0	2010.05.24	APPROVED FOR CONSTRUCTION	JYK	BYJ	HCL	SDH
A	2010.04.26	ISSUED FOR APPROVAL	JYK	BYJ	HCL	SDH

CHECK

PROJ. NO. 3609	DWN BY (TEL. 7859) J.Y.KIM	TITLE CONTAMINATED DRAIN DRILL MODULE (OILY WATER)	SHEET 4 / 6
DEPT OUTFITTING DESIGN TEAM 2	DATE 2011.04.15	SCALE NONE	DWG. NO. DA804P001

FILE NAME : 3 4 5 6 7 8 9 10



GENERAL NOTES
 G1) FOR LOCATION OF DRAIN SCUPPERS, PLEASE REFER TO PIPING ARRANGEMENT DRAWING AT DETAIL DESIGN STAGE.

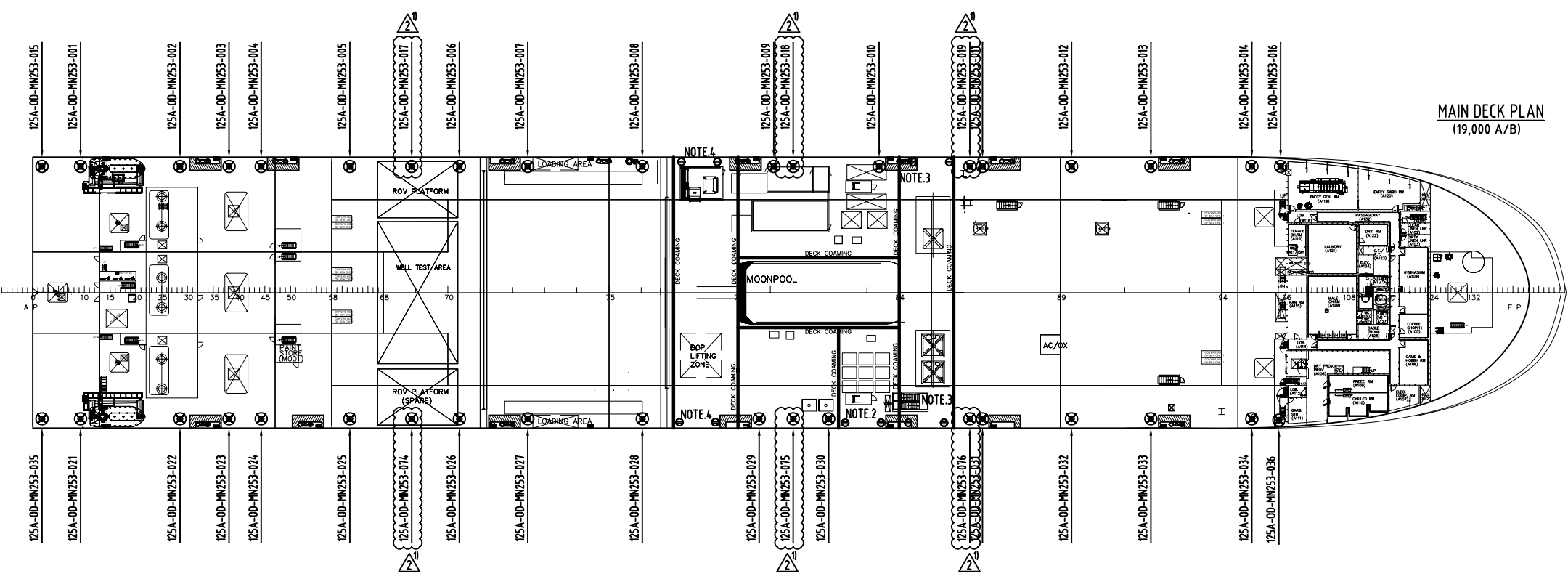
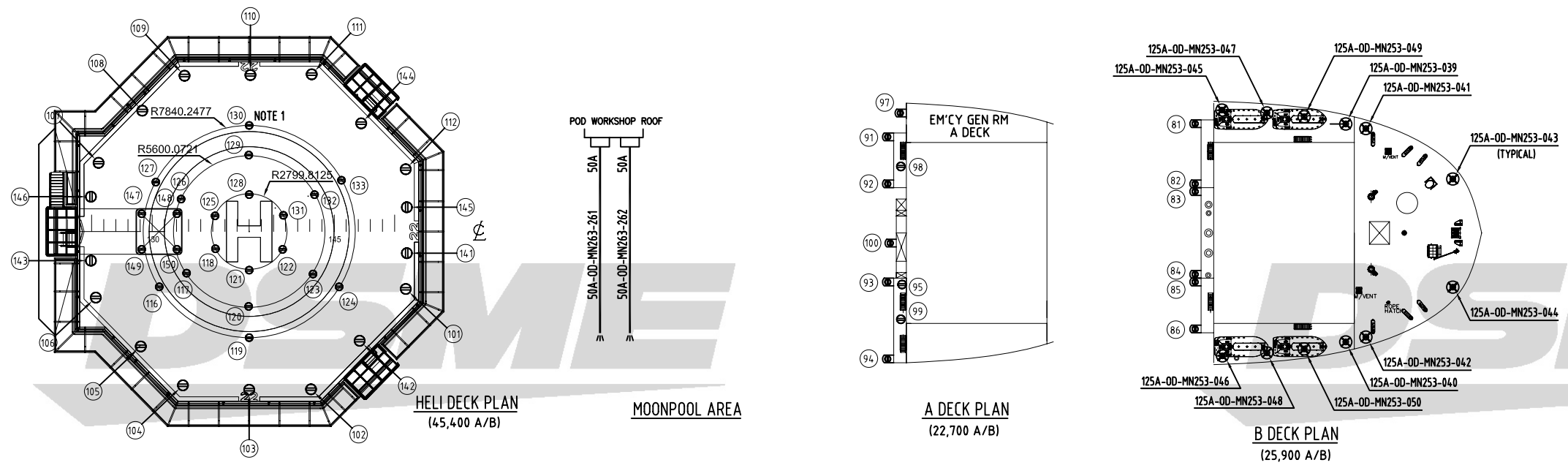
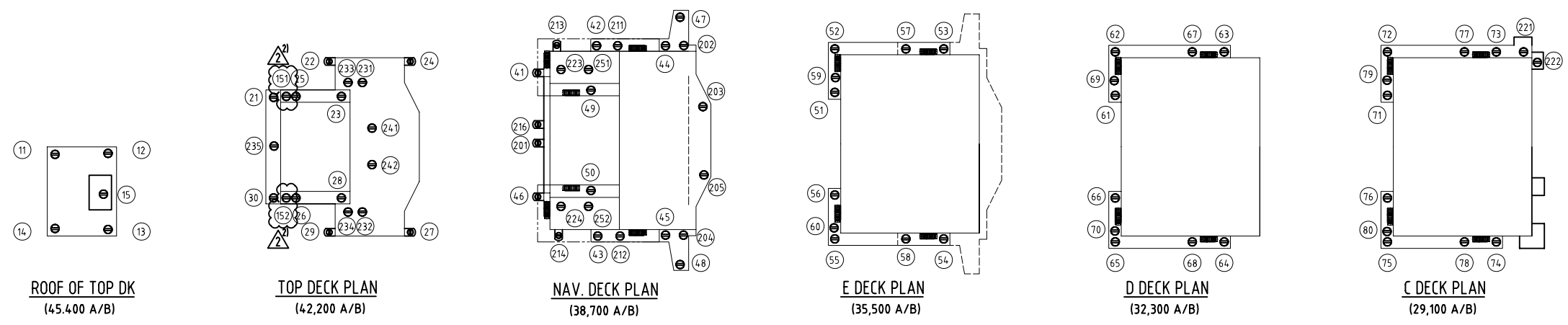
NOTES
 1) BLINDED CONNECTION FOR MANUAL CLEANING
 2) TO CONSIDER THAT THE PORTABLE BILGE PUMP WILL BE USED TO TRANSFER BILGE WATER.
 3) L-TYPE MUD BOX.
 4) VALVE TO BE IN OVERBOARD DIRECTION AT (95%) OF DRAIN TANK("C") AND AUTOMATICALLY RESET TO BE IN DRAIN TANK DIRECTION("B") AT L(10%) LEVEL.
 5) DRAIN PUMP TO BE STARTED AND STOPPED MANUALLY.
 6) SEE DWG.DA801P001-3
 7) ISOLATION GASKET.

REVISION HISTORY
 1) MODIFIED AS PER ACTUAL PIPING LAYOUT.(2010.11.26)
 2) MODIFIED AS PER ACTUAL PIPING LAYOUT.(2011.04.11)

TAGNO.	DESCRIPTION	TYPE	CAPACITY
A81-PP-101 A/B	WELL TEST DRAIN PUMP A/B	DIAPHRAM	15 m ³ /h x 2.5 bar
A81-PP-102 A/B	RISER STOR. DRAIN PUMP A/B	DIAPHRAM	15 m ³ /h x 2.5 bar
A81-TK-101 A/B	WELL TEST DRAIN SUMP A/B		6 m ³
A81-TK-102 A/B	RISER STOR. DRAIN SUMP A/B		7.5 m ³
A81-PP-103	FISHING TOOL AREA DRAIN PUMP	DIAPHRAM	15 m ³ /h x 2.5 bar
A81-TK-103	FISHING TOOL AREA DRAIN SUMP		4 m ³

REV.	DATE	NOTE	DWN	CHK	CHIEF	APP.BY
2	2011.04.15	ISSUED FOR REVISION	JYK	YKR	HCL	HCL
1	2010.10.28	ISSUED FOR REVISION	JYK	JJC	HCL	SDH
0	2010.05.24	APPROVED FOR CONSTRUCTION	JYK	BYJ	HCL	SDH
A	2010.04.26	ISSUED FOR APPROVAL	JYK	BYJ	HCL	SDH

CHECK		TITLE : PIPING & INSTRUMENT DIAGRAM CONTAMINATED DRAIN EXCEPT MUD/DRILL MODULE		SHEET 6 / 6	
PROJ. NO.	3609	DWVN BY (TEL.7859)	J.Y.KIM	DATE	2011.04.15
DEPT	OUTFITTING DESIGN TEAM 2	SCALE	NONE	DWG. NO.	DA804P001
REV.		DWN	CHK	CHIEF	APP.BY



GENERAL NOTES

G1) THE EXACT NUMBER OF SCUPPER TO BE UPDATED WHEN THE PIPING ROUTING IS FIXED.

G2) FOR LOCATION OF DRAIN SCUPPERS, PLEASE REFER TO PIPING ARRANGEMENT DRAWING AT DETAIL DESIGN STAGE.

G3) MAIN DECK SCUPPER PIPES SHALL BE OF ND 125MM, AND SHALL BE ARRANGED AT THE INTERVAL OF APPROX.15M AT FWD AND AFTER PARTS OF MAIN DECK AND AT THE INTERVAL OF APPROX.30M AT HOLD AREA. AND THE SCUPPER PIPES SHALL BE LED TO THE SIDE SHELL BELOW APPROX.500MM FROM THE MAIN DECK.

NOTES

1) NO.116 - NO.133 POINTS ARE TIE-DOWN POINTS. FOR DETAILS, PLEASE REFER TO DWG. 3603DA560F001.

2) DRAIN LINE FROM CUTTING CONTAINER STORAGE AREA SHOULD BE LED TO HAZARDOUS DRAIN MANIFOLD. REFER TO DWG.NO DA804P001-3

3) DRAIN LINE FROM X-MAS TREE LADING AREA SHOULD BE LED TO CONTAMINATED DRAIN MANIFOLD. REFER TO DWG.NO DA804P001-4

4) DRAIN LINE FROM BOP LANDING AREA & LMRP LANDING AREA SHOULD BE LED TO CONTAMINATED DRAIN MANIFOLD. REFER TO DWG.NO DA804P001-4

REVISION HISTORY

1) REQUEST FROM PIPING.(2011.01.20)

2) ADDED DRAIN LINE AS PER REQUEST FROM PIPING. (2011.02.25)

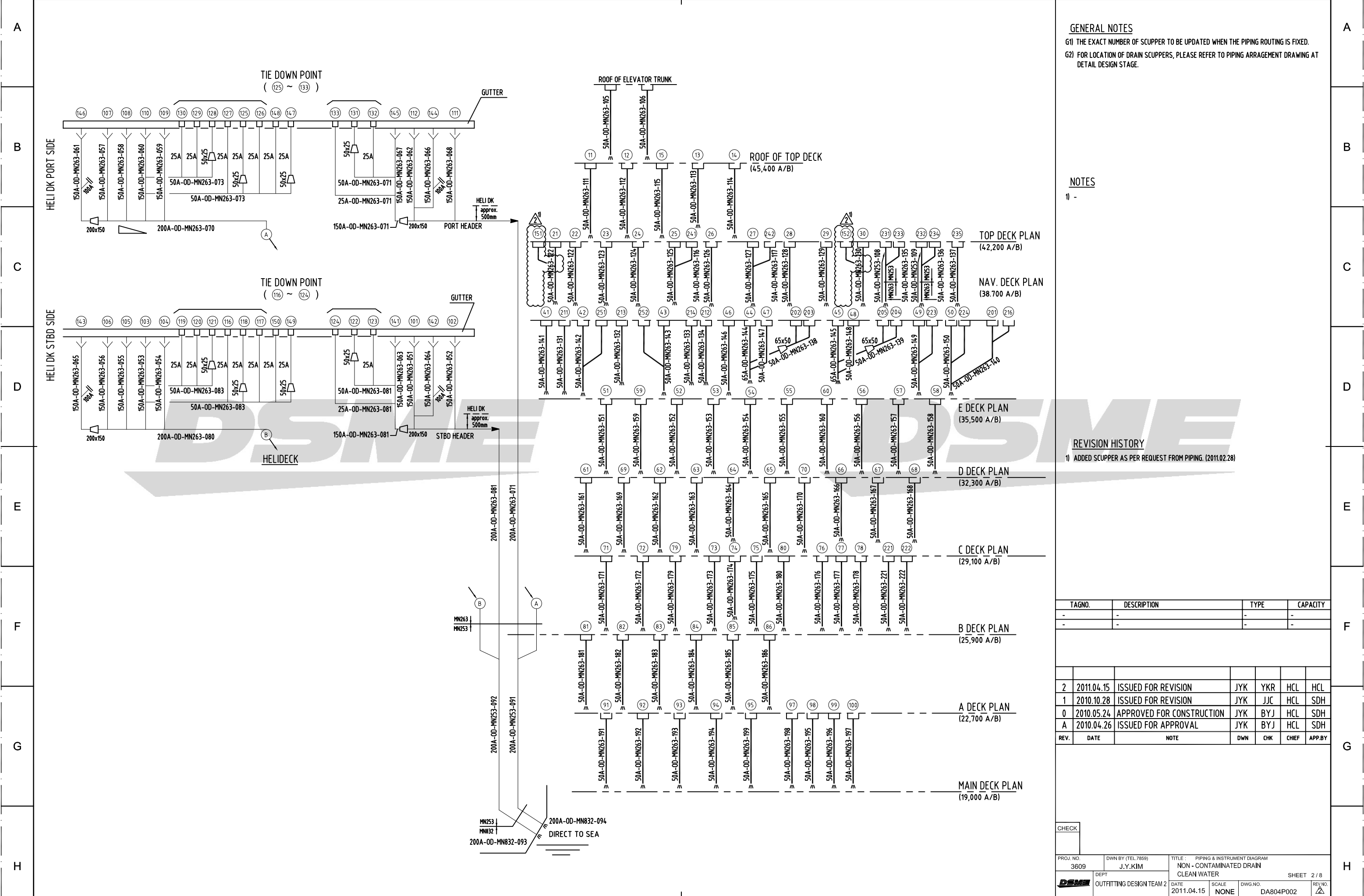
REV.	DATE	NOTE	DWN	CHK	CHIEF	APP.BY
2	2011.04.15	ISSUED FOR REVISION	JYK	YKR	HCL	HCL
1	2010.10.28	ISSUED FOR REVISION	JYK	JJC	HCL	SDH
0	2010.05.24	APPROVED FOR CONSTRUCTION	JYK	BYJ	HCL	SDH
A	2010.04.26	ISSUED FOR APPROVAL	JYK	BYJ	HCL	SDH

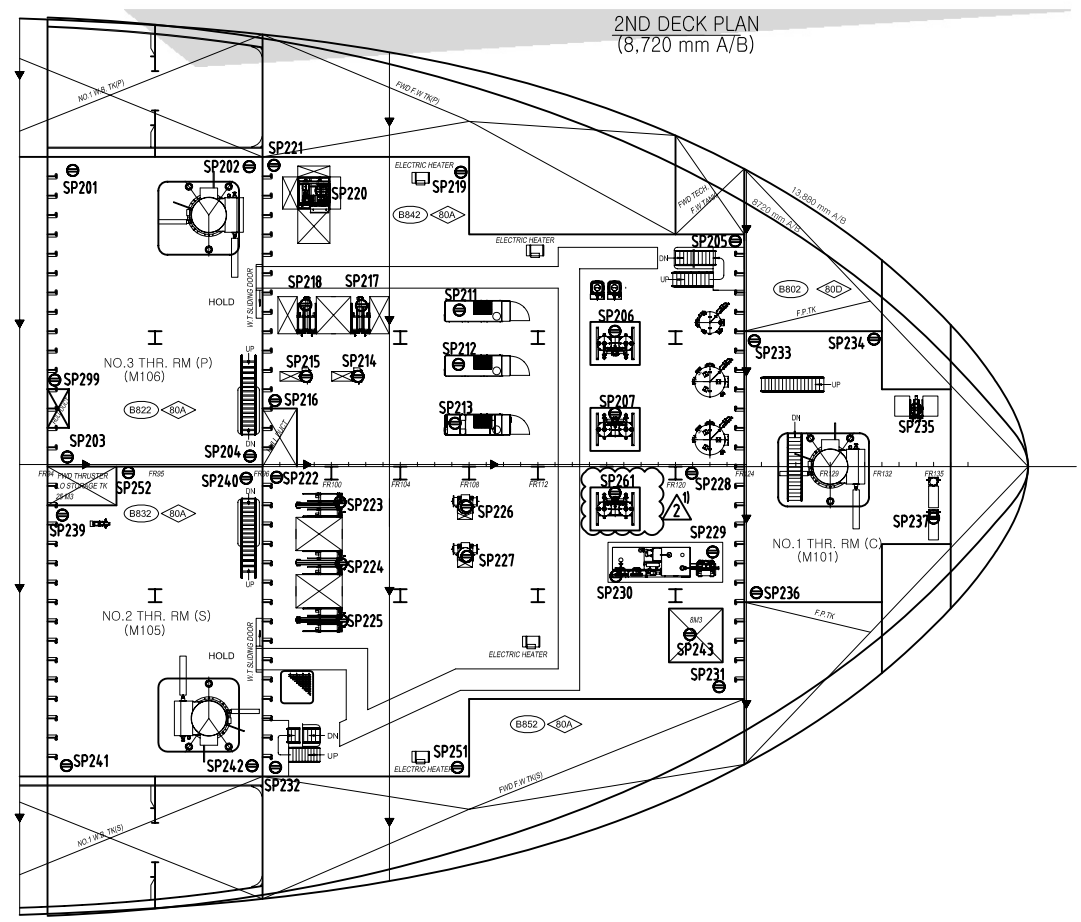
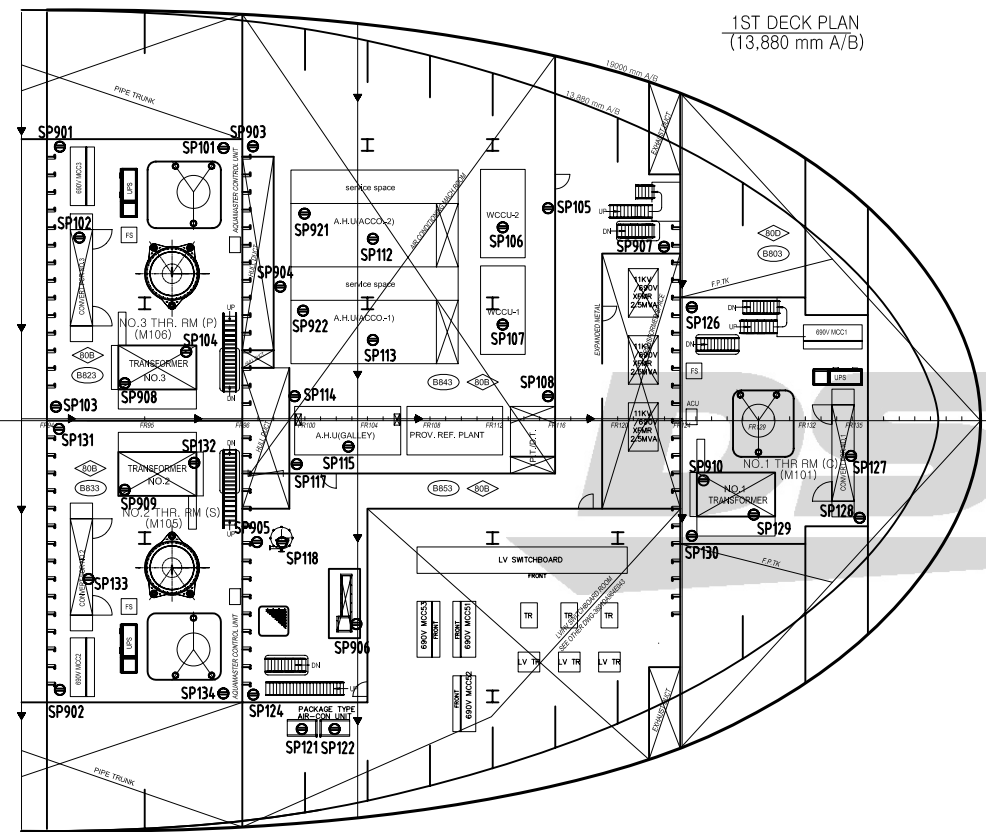
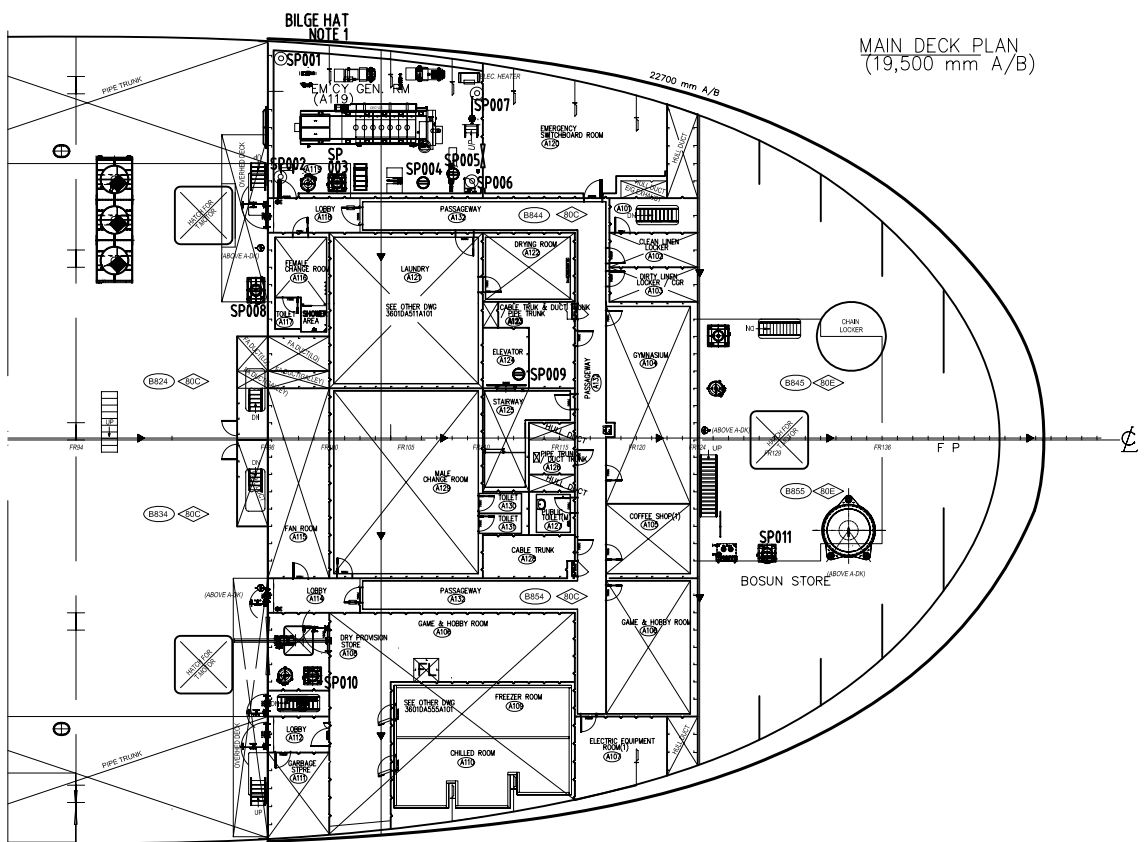
DAEWOO SHIPBUILDING & MARINE ENGINEERING CO.,LTD.

ISSUED FOR INFORMATION
 ISSUED FOR APPROVAL
 ISSUED FOR CONSTRUCTION

DATE

CHECK	PROJ. NO. 3609	DWY BY (TEL.7859) J.Y.KIM	TITLE : PIPING & INSTRUMENT DIAGRAM NON-CONTAMINATED DRAIN CLEAN WATER	DEPT. OUTFITTING DESIGN TEAM 2	SCALE NONE	DWG. NO. DA804P002	SHEET 1 / 8
FILE NAME :	DATE 2011.04.15	SCALE NONE	DWG. NO. DA804P002	REV. NO.	DAEWOO SHIPBUILDING & MARINE ENGINEERING CO.,LTD.		





GENERAL NOTES

- G1) THE EXACT NUMBER OF SCUPPER TO BE UPDATED WHEN THE PIPING ROUTING IS FIXED.
- G2) FOR LOCATION OF DRAIN SCUPPERS, PLEASE REFER TO PIPING ARRANGEMENT DRAWING AT DETAIL DESIGN STAGE.

NOTES

- 1) BILGE HAT TO BE INSTALLED EACH CORNER OF EG ROOM (SP 001, SP002, SP006, SP007), SEE ALSO NEXT PAGE

HOLD

- THE NUMBER OF SCUPPER TO BE ADDED/DELETED BY COMMENT FROM PIPING PART.

REVISION HISTORY

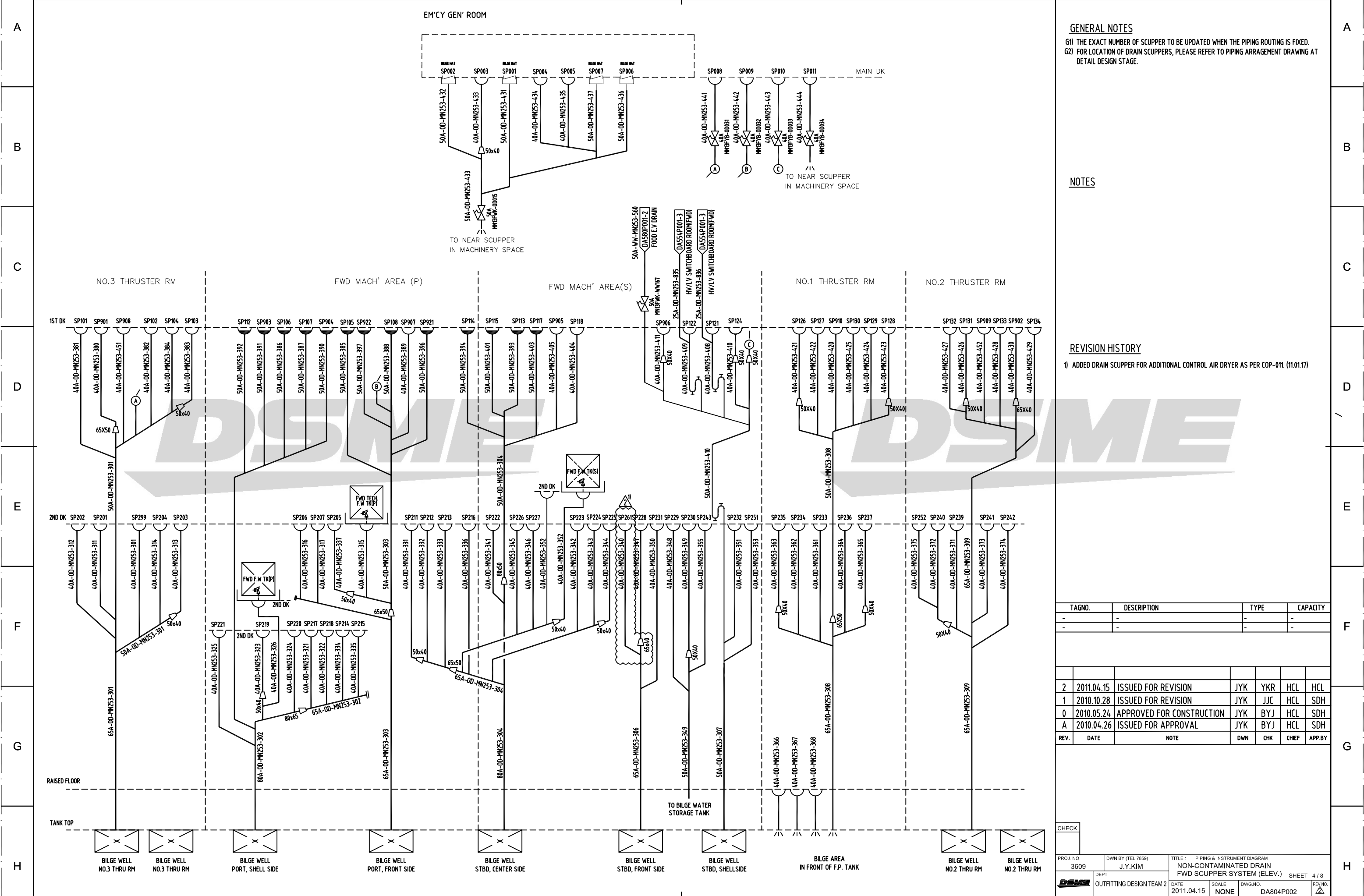
- 1) ADDED DRAIN SCUPPER FOR ADDITIONAL CONTROL AIR DRYER AS PER COP-011. (11.01.17)

TAGNO.	DESCRIPTION	TYPE	CAPACITY
-	-	-	-
-	-	-	-

REV.	DATE	NOTE	DWN	CHK	CHIEF	APP.BY
2	2011.04.15	ISSUED FOR REVISION	JYK	YKR	HCL	HCL
1	2010.10.28	ISSUED FOR REVISION	JYK	JJC	HCL	SDH
0	2010.05.24	APPROVED FOR CONSTRUCTION	JYK	BYJ	HCL	SDH
A	2010.04.26	ISSUED FOR APPROVAL	JYK	BYJ	HCL	SDH

CHECK

PROJ. NO. 3609	DWN BY (TEL. 7859) J.Y.KIM	TITLE : PIPING & INSTRUMENT DIAGRAM NON-CONTAMINATED DRAIN FWD SCUPPER SYSTEM (PLAN) SHEET 3 / 8
DEPT OUTFITTING DESIGN TEAM 2	DATE 2011.04.15	SCALE NONE
	DWG. NO. DA804P002	REV. NO. 3



GENERAL NOTES
 G1) THE EXACT NUMBER OF SCUPPER TO BE UPDATED WHEN THE PIPING ROUTING IS FIXED.
 G2) FOR LOCATION OF DRAIN SCUPPERS, PLEASE REFER TO PIPING ARRANGEMENT DRAWING AT DETAIL DESIGN STAGE.

NOTES

REVISION HISTORY

- 1) ADDED DRAIN SCUPPER FOR ADDITIONAL CONTROL AIR DRYER AS PER COP-011. (11.01.17)

TAGNO.	DESCRIPTION	TYPE	CAPACITY
-	-	-	-
-	-	-	-

REV.	DATE	NOTE	DWN	CHK	CHIEF	APP.BY
2	2011.04.15	ISSUED FOR REVISION	JYK	YKR	HCL	HCL
1	2010.10.28	ISSUED FOR REVISION	JYK	JJC	HCL	SDH
0	2010.05.24	APPROVED FOR CONSTRUCTION	JYK	BYJ	HCL	SDH
A	2010.04.26	ISSUED FOR APPROVAL	JYK	BYJ	HCL	SDH

CHECK		PROJ. NO. 3609		DWN BY (TEL 7859) J.Y.KIM		TITLE : PIPING & INSTRUMENT DIAGRAM NON-CONTAMINATED DRAIN FWD SCUPPER SYSTEM (ELEV.) SHEET 4 / 8	
DEPT. OUTFITTING DESIGN TEAM 2		DATE 2011.04.15		SCALE NONE		DWG. NO. DA804P002	
DAEWOO SHIPBUILDING & MARINE ENGINEERING CO., LTD.							

GENERAL NOTES
 G1) THE EXACT NUMBER OF SCUPPER TO BE UPDATED WHEN THE PIPING ROUTING IS FIXED.
 G2) FOR LOCATION OF DRAIN SCUPPERS, PLEASE REFER TO PIPING ARRANGEMENT DRAWING AT DETAIL DESIGN STAGE.

NOTES
 1) THE SYMBOL "*" DENOTES THAT SCUPPERS UNDER DRIP TRAY (EX. : SP208*)
 2) DELETED.

REVISION HISTORY
 1) ADDED DRAIN SCUPPER FOR ADDITIONAL STARTING AIR COMP. AS PER COP-014.(2011.01.13)
 2) CHANGED THE NAME OF ROOM CORRECTLY AS PER COP-008.(2011.01.20)
 3) ADDED SCUPPER BELOW AUTO DRAIN TRAP AS PER OWNER'S COMMENT. (2011.02.01)

TAGNO.	DESCRIPTION	TYPE	CAPACITY
-	-	-	-
2	2011.04.15	ISSUED FOR REVISION	JYK YKR HCL HCL
1	2010.10.28	ISSUED FOR REVISION	JYK JJC HCL SDH
0	2010.05.24	APPROVED FOR CONSTRUCTION	JYK BYJ HCL SDH
A	2010.04.26	ISSUED FOR APPROVAL	JYK BYJ HCL SDH
REV.	DATE	NOTE	DWN CHK CHIEF APP.BY

CHECK		DATE		SCALE		DWG NO.		REV. NO.	
PROJ. NO.	DWN BY (TEL. #859)	TITLE : PIPING & INSTRUMENT DIAGRAM NON-CONTAMINATED DRAIN AFT SCUPPER SYSTEM (PLAN) SHEET 5 / 8				SCALE		REV. NO.	
3609	J.Y.KIM					NONE		DA804P002	
DEPT		DATE		SCALE		DWG NO.		REV. NO.	
OUTFITTING DESIGN TEAM 2		2011.04.15		NONE		DA804P002		5 / 8	

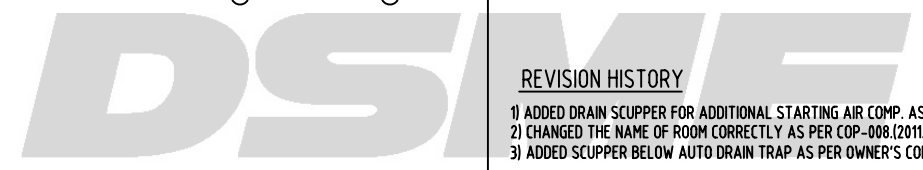
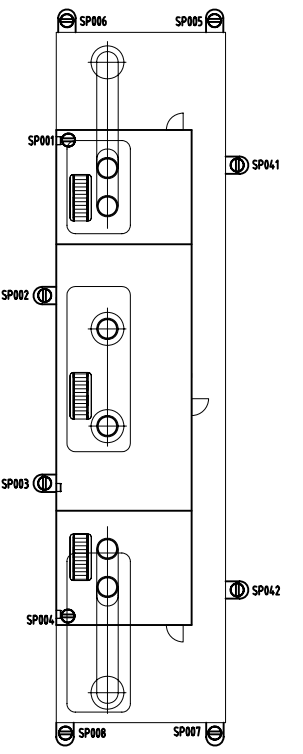
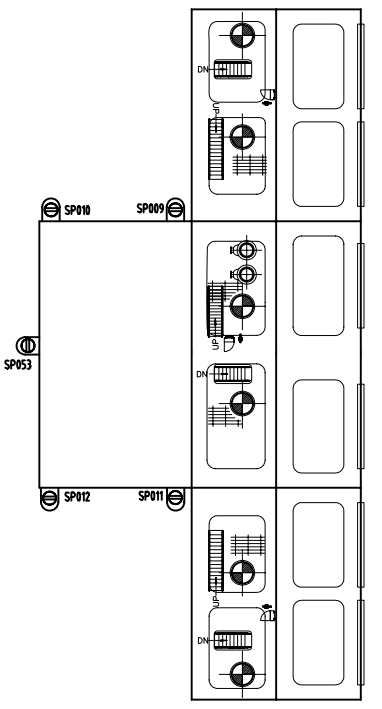
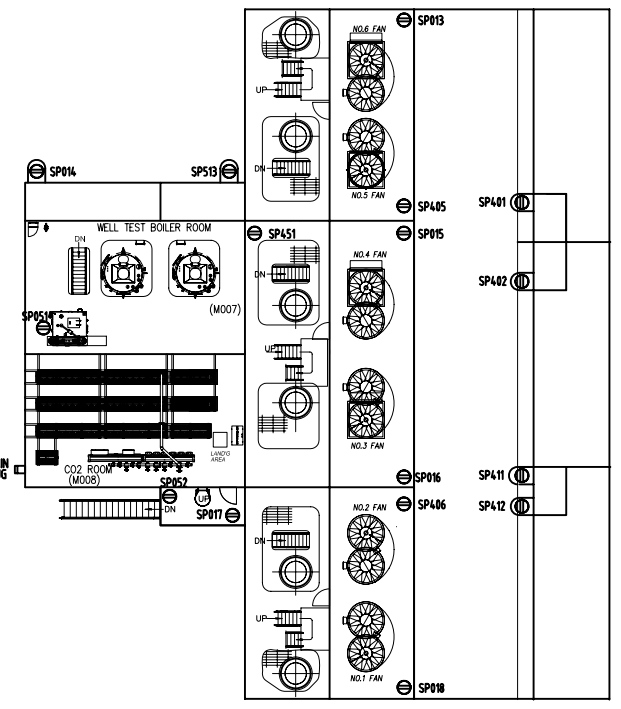
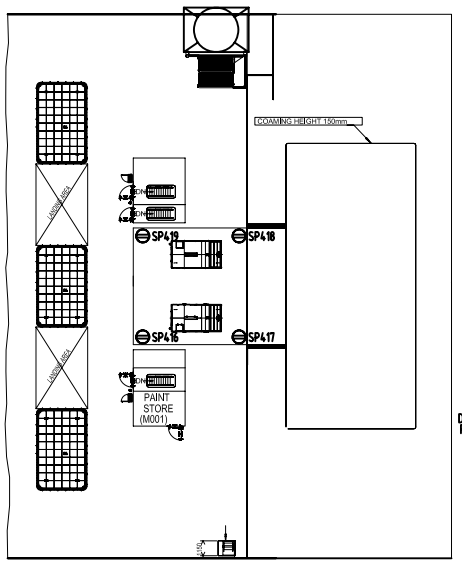
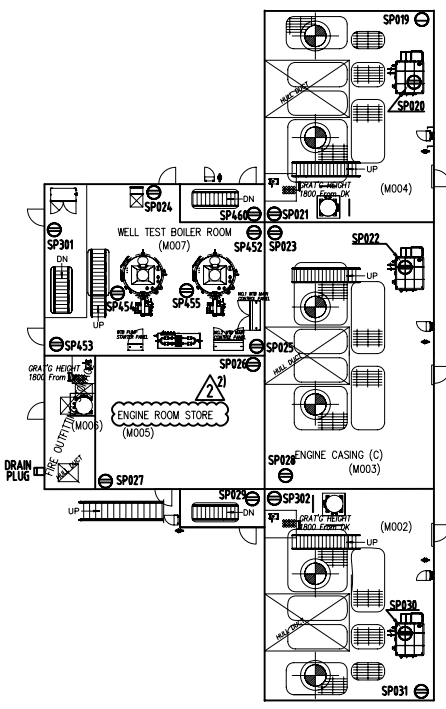
MAIN DECK(19,500 mm A/B)
PLAN

WELL TEST AREA
23,500 mm A/B

'A'- DECK PLAN
24,000 mm A/B

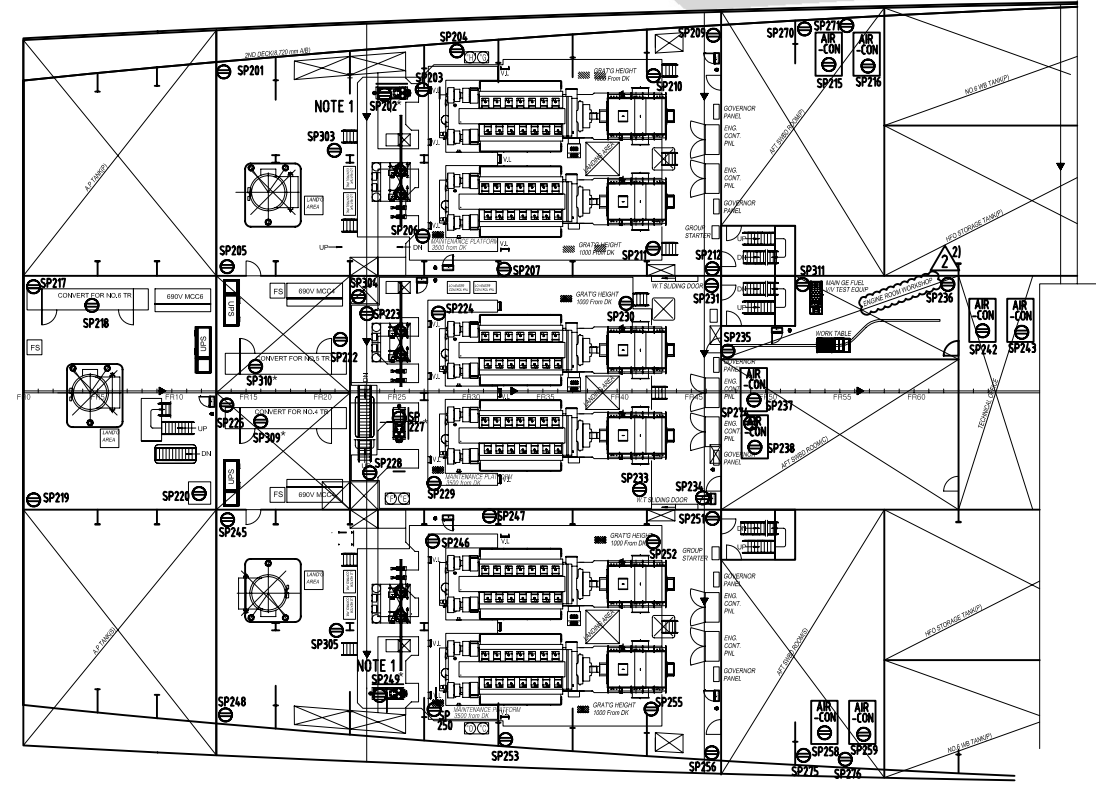
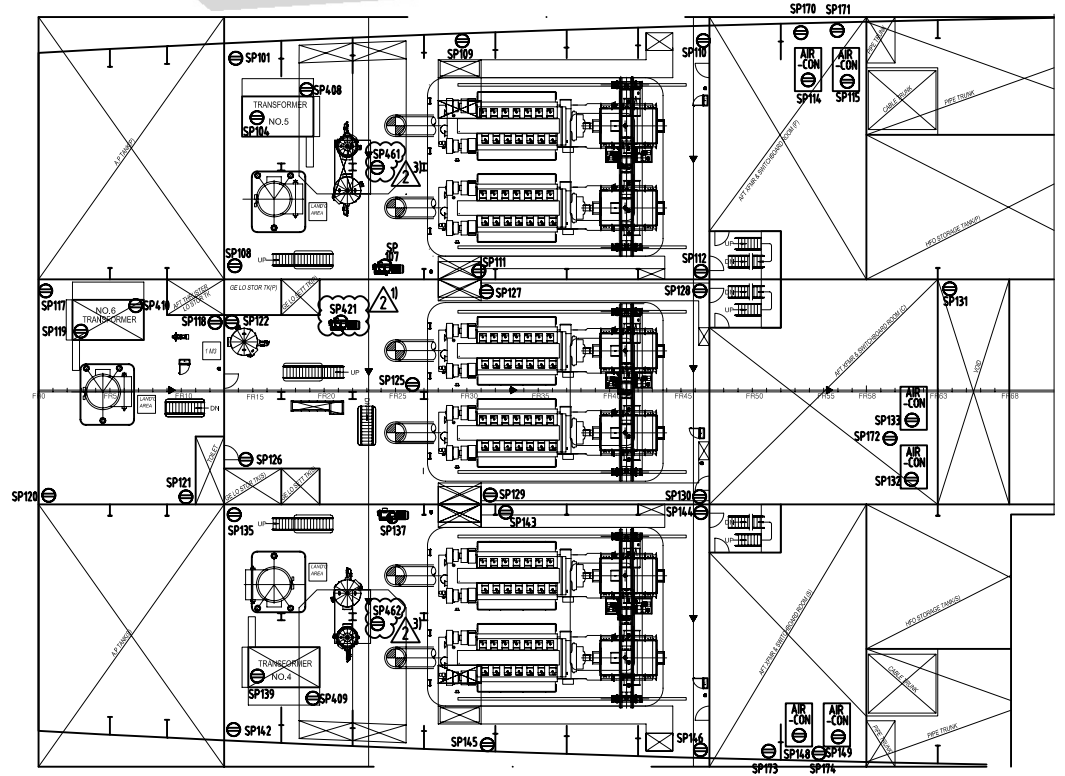
'B'- DECK PLAN
28,000 mm A/B

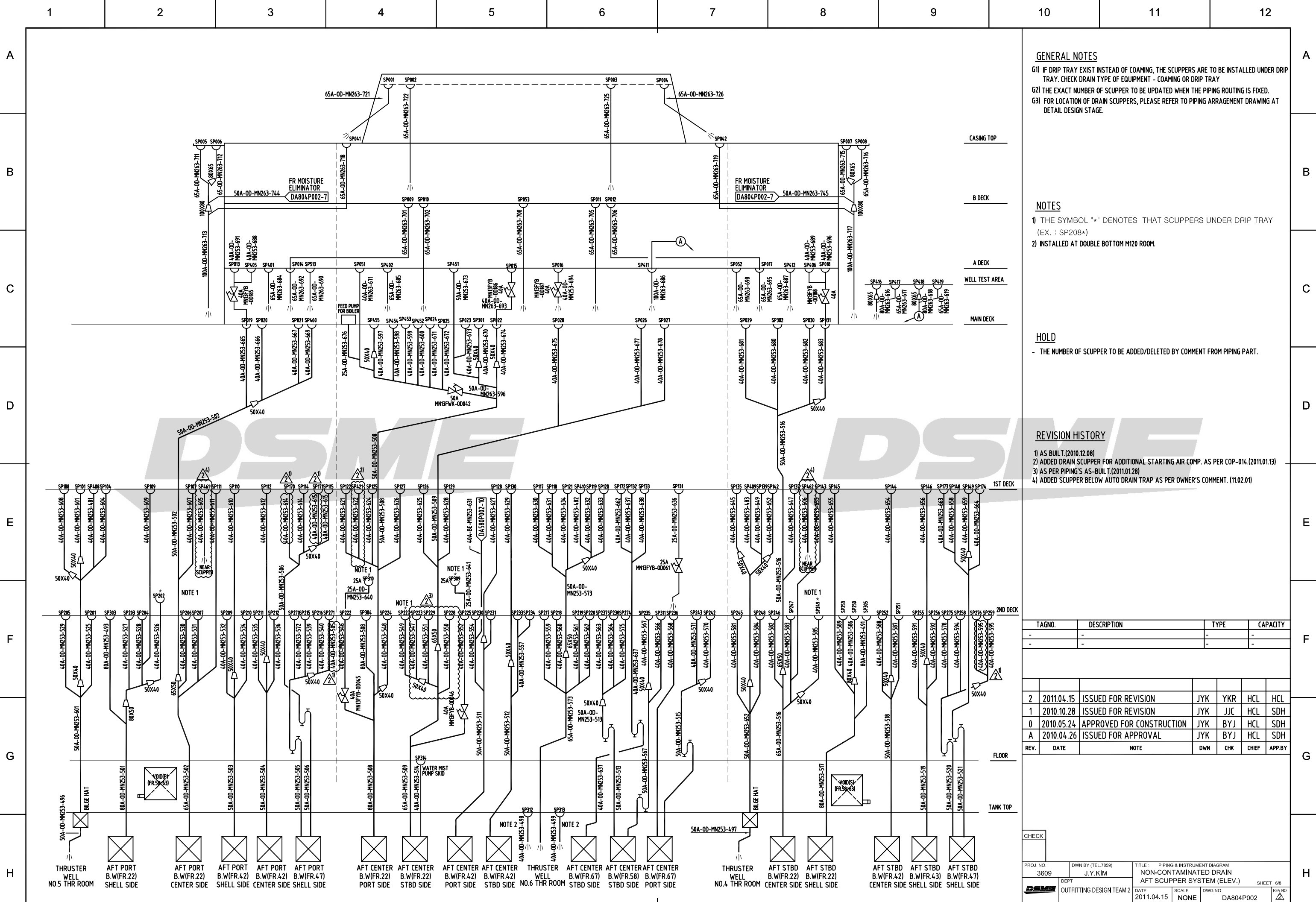
CASING TOP
32,000 mm A/B



1ST DECK (14,740 mm A/B)

2ND DECK (9,580 mm A/B)





GENERAL NOTES

- G1) IF DRIP TRAY EXIST INSTEAD OF COAMING, THE SCUPPERS ARE TO BE INSTALLED UNDER DRIP TRAY. CHECK DRAIN TYPE OF EQUIPMENT - COAMING OR DRIP TRAY
- G2) THE EXACT NUMBER OF SCUPPER TO BE UPDATED WHEN THE PIPING ROUTING IS FIXED.
- G3) FOR LOCATION OF DRAIN SCUPPERS, PLEASE REFER TO PIPING ARRANGEMENT DRAWING AT DETAIL DESIGN STAGE.

NOTES

- 1) THE SYMBOL "*" DENOTES THAT SCUPPERS UNDER DRIP TRAY (EX. : SP208*)
- 2) INSTALLED AT DOUBLE BOTTOM M120 ROOM.

HOLD

- THE NUMBER OF SCUPPER TO BE ADDED/DELETED BY COMMENT FROM PIPING PART.

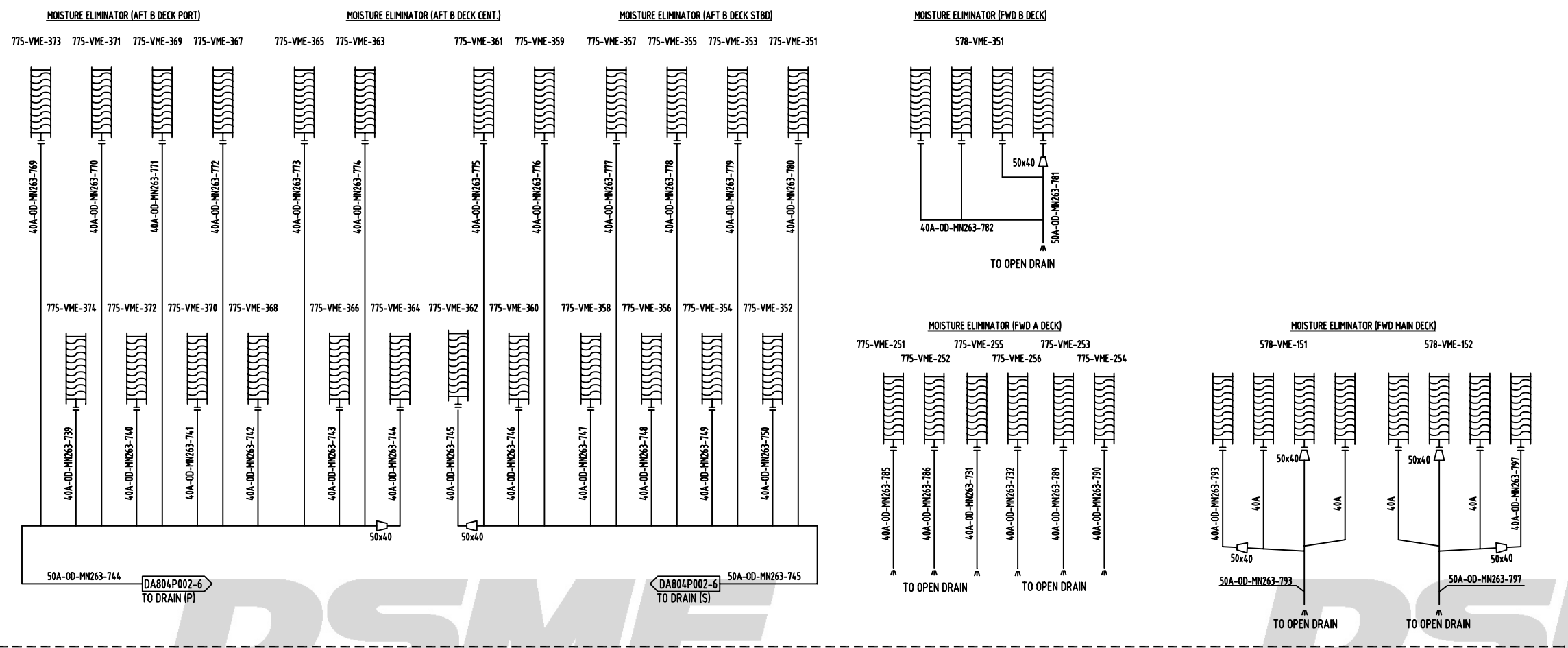
REVISION HISTORY

- 1) AS BUILT.(2010.12.08)
- 2) ADDED DRAIN SCUPPER FOR ADDITIONAL STARTING AIR COMP. AS PER COP-014.(2011.01.13)
- 3) AS PER PIPING'S AS-BUILT.(2011.01.28)
- 4) ADDED SCUPPER BELOW AUTO DRAIN TRAP AS PER OWNER'S COMMENT. (11.02.01)

TAGNO.	DESCRIPTION	TYPE	CAPACITY			
-	-	-	-			
-	-	-	-			
2	2011.04.15	ISSUED FOR REVISION	JYK YKR HCL HCL			
1	2010.10.28	ISSUED FOR REVISION	JYK JJC HCL SDH			
0	2010.05.24	APPROVED FOR CONSTRUCTION	JYK BYJ HCL SDH			
A	2010.04.26	ISSUED FOR APPROVAL	JYK BYJ HCL SDH			
REV.	DATE	NOTE	DWN	CHK	CHIEF	APP.BY

CHECK

PROJ. NO. 3609	DWN BY (TEL.7859) J.Y.KIM	TITLE PIPING & INSTRUMENT DIAGRAM NON-CONTAMINATED DRAIN AFT SCUPPER SYSTEM (ELEV.)	SHEET 6/8
DEPT OUTFITTING DESIGN TEAM 2	DATE 2011.04.15	SCALE NONE	DWG. NO. DA804P002
FILE NAME :		DAEWOO SHIPBUILDING & MARINE ENGINEERING CO., LTD.	



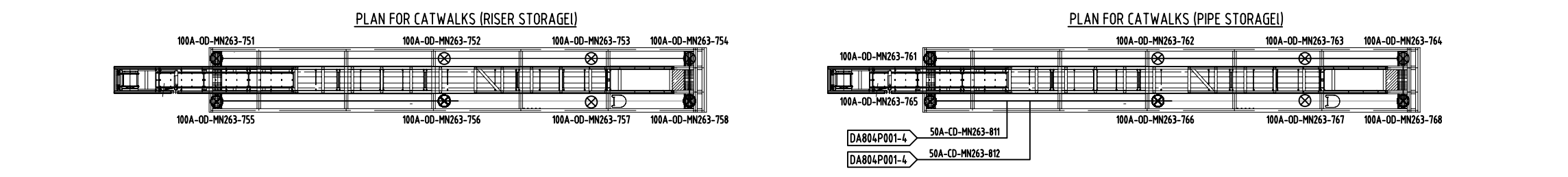
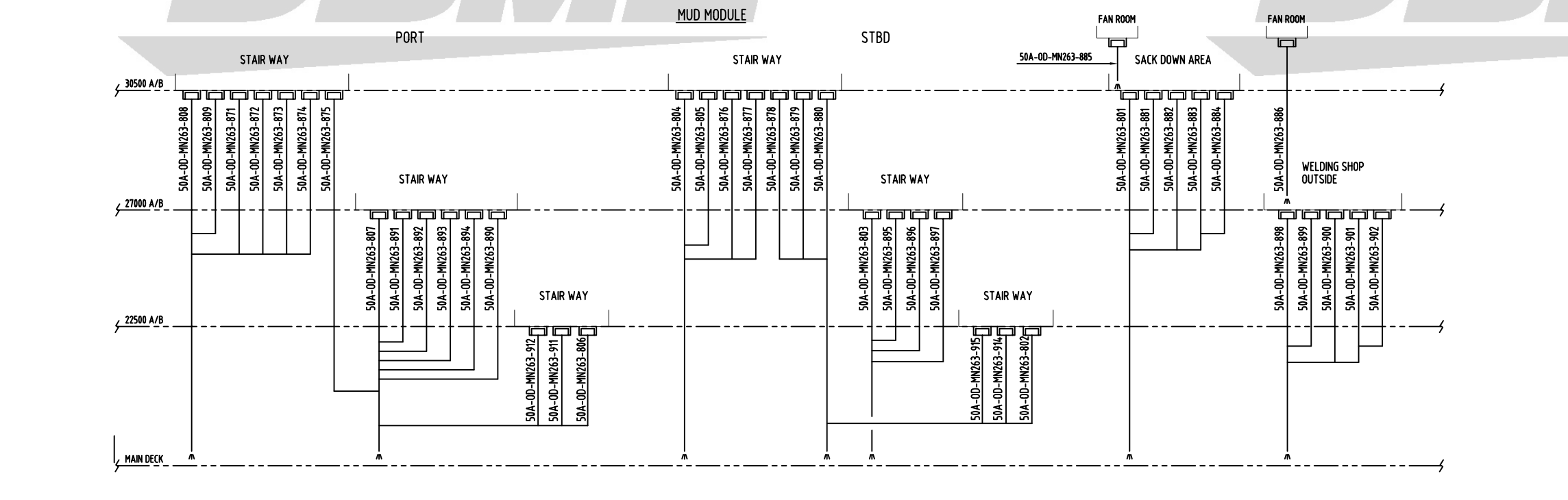
GENERAL NOTES
 G1) THE EXACT NUMBER OF SCUPPER TO BE UPDATED WHEN THE PIPING ROUTING IS FIXED.
 G2) FOR LOCATION OF DRAIN SCUPPERS, PLEASE REFER TO PIPING ARRANGEMENT DRAWING AT DETAIL DESIGN STAGE.

NOTES
 1)

REVISION HISTORY

TAGNO.	DESCRIPTION	TYPE	CAPACITY
-	-	-	-
-	-	-	-

REV.	DATE	NOTE	DWN	CHK	CHIEF	APP.BY
2	2011.04.15	ISSUED FOR REVISION	JYK	YKR	HCL	HCL
1	2010.10.28	ISSUED FOR REVISION	JYK	JJC	HCL	SDH
0	2010.05.24	APPROVED FOR CONSTRUCTION	JYK	BYJ	HCL	SDH
A	2010.04.26	ISSUED FOR APPROVAL	JYK	BYJ	HCL	SDH



CHECK

PROJ. NO. 3609	DWY. BY (TEL. 7859) J.Y.KIM	TITLE NON-CONTAMINATED DRAIN CRANE AND CATWALKS (TYPICAL)	SHEET 7 / 8
DEPT. OUTFITTING DESIGN TEAM 2	DATE 2011.04.15	SCALE NONE	DWG. NO. DA804P002

DAEWOO SHIPBUILDING & MARINE ENGINEERING CO., LTD.

GENERAL NOTES

G1) ---

NOTES

1) ---

L.Q AREA				MUD MODULE			
DUCT NO.	BLOCK NO.	FRAME	LOUNGE	DUCT NO.	BLOCK NO.	FRAME	LOUNGE
1	932	95-1150	-12	31	468	94	13

FWD M/S			
DUCT NO.	BLOCK NO.	FRAME	LOUNGE
41	853	122	-12
44	857	125	-9
43	844	112	20
46	824	94	16
45	822	96	1
42	824	96	13
47	834	94	-13
48	803	124	7
49	846	125	18
50	856	125	-18

REVISION HISTORY

TAGNO.	DESCRIPTION	TYPE	CAPACITY
-	-	-	-
-	-	-	-

REV.	DATE	NOTE	DWN	CHK	CHIEF	APP.BY
2	2011.04.15	ISSUED FOR REVISION	JYK	YKR	HCL	HCL
1	2010.10.28	ISSUED FOR REVISION	JYK	JJC	HCL	SDH
0	2010.05.24	APPROVED FOR CONSTRUCTION	JYK	BYJ	HCL	SDH
A	2010.04.26	ISSUED FOR APPROVAL	JYK	BYJ	HCL	SDH

CHECK

PROJ. NO. 3609	DWN BY (TEL 7859) J.Y.KIM	TITLE : PIPING & INSTRUMENT DIAGRAM NON-CONTAMINATED DRAIN HULL DUCT DRAIN	SHEET 8 / 8
DEPT OUTFITTING DESIGN TEAM 2	DATE 2011.04.15	SCALE NONE	DWG. NO. DA804P002

