

GENERAL NOTES
 G1 ALL DRAIN LINES TO BE NO POCKET
 G2 THE DRAIN LINE TO BE LED TO PREVENT FROM OIL SPLASHING WHEN DRAINING

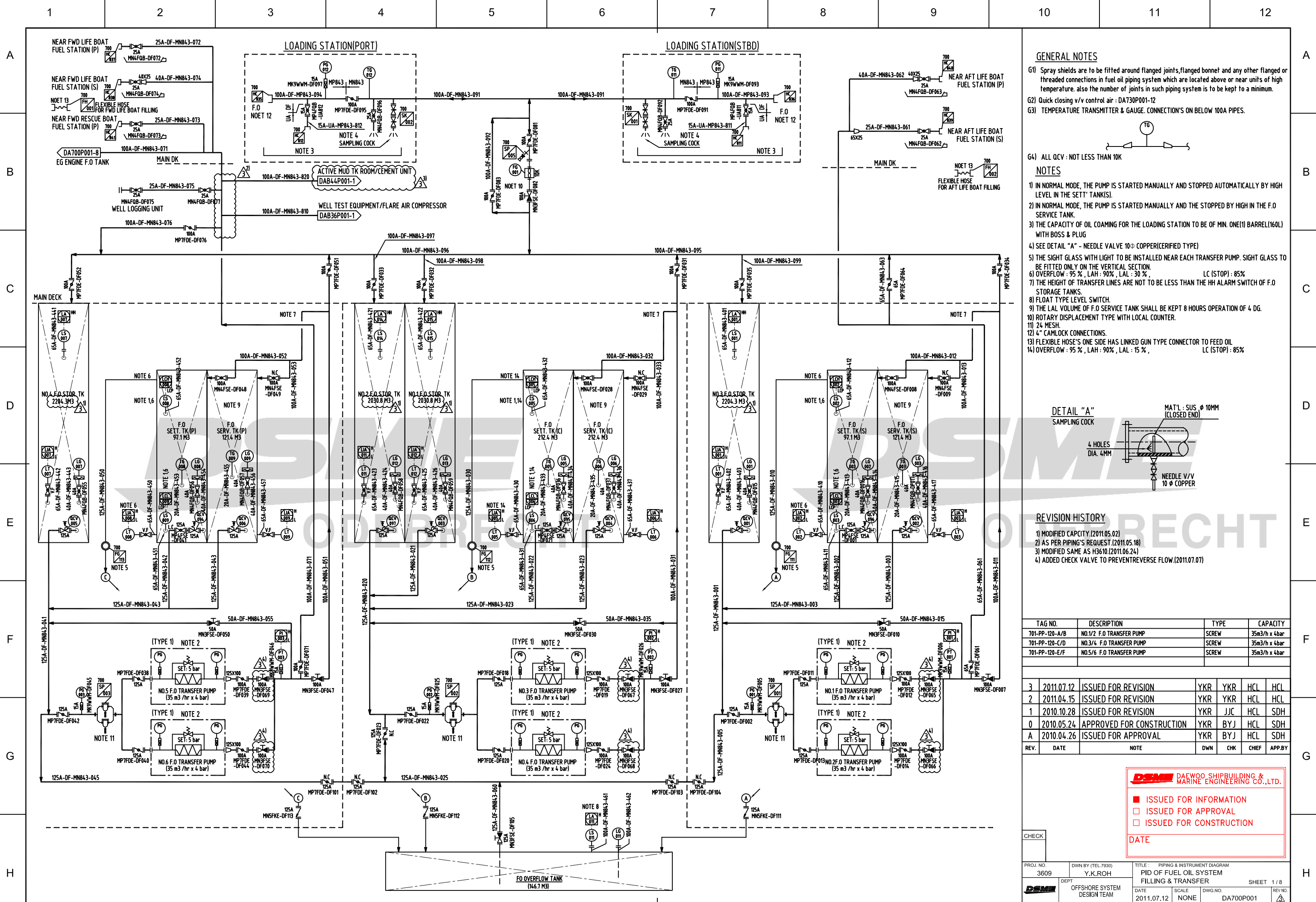
NOTES
 1) NON RETURN VALVES TO BE LOCATED AS CLOSE AS POSSIBLE TO BULK HEAD

REVISION HISTORY

REV.	DATE	NOTE	DWN	CHK	CHIEF	APP-BY
Z1	02/10/2014	ISSUED FOR APPROVAL	JYK	WC	ST	JP
Z	2011.12.30	AS BUILT	JYK	YKR	HCL	HCL
3	2011.12.02	ISSUED FOR REVISION	JYK	YKR	HCL	HCL
2	2011.04.15	ISSUED FOR REVISION	JYK	YKR	HCL	HCL
1	2010.10.28	ISSUED FOR REVISION	JYK	JJC	HCL	SDH
0	2010.05.24	APPROVED FOR CONSTRUCTION	JYK	BYJ	HCL	SDH
A	2010.04.26	ISSUED FOR APPROVAL	JYK	BYJ	HCL	SDH

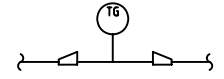
REV.	DATE	NOTE	DWN	CHK	CHIEF	APP-BY
CHECK						

PROJ. NO.	3909	DRAWN BY (T.W.700)	J.Y.KIM	TITLE:	PIPING & INSTRUMENT DIAGRAM
DEPT.	OFFSHORE SYSTEM DESIGN TEAM	REAL:	NONE	DWR NO.:	DA773P001
DATE:	2011.12.30	SCALE:		REVISED BY:	
FILE NAME:		3		4	



GENERAL NOTES

- G1) Spray shields are to be fitted around flanged joints, flanged bonnet and any other flanged or threaded connections in fuel oil piping system which are located above or near units of high temperature. also the number of joints in such piping system is to be kept to a minimum.
- G2) Quick closing v/v control air : DA730P001-12
- G3) TEMPERATURE TRANSMITTER & GAUGE. CONNECTION'S ON BELOW 100A PIPES.

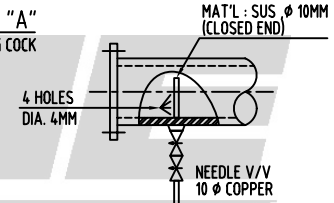


G4) ALL QCV : NOT LESS THAN 10K

NOTES

- 1) IN NORMAL MODE, THE PUMP IS STARTED MANUALLY AND STOPPED AUTOMATICALLY BY HIGH LEVEL IN THE SETT' TANK(S).
- 2) IN NORMAL MODE, THE PUMP IS STARTED MANUALLY AND THE STOPPED BY HIGH IN THE F.O SERVICE TANK.
- 3) THE CAPACITY OF OIL COAMING FOR THE LOADING STATION TO BE OF MIN. ONE(1) BARREL(160L) WITH BOSS & PLUG
- 4) SEE DETAIL "A" - NEEDLE VALVE 10ø COPPER(CERIFIED TYPE)
- 5) THE SIGHT GLASS WITH LIGHT TO BE INSTALLED NEAR EACH TRANSFER PUMP. SIGHT GLASS TO BE FITTED ONLY ON THE VERTICAL SECTION.
- 6) OVERFLOW : 95 % , LAH : 90% , LAL : 30 % , LC (STOP) : 85%
- 7) THE HEIGHT OF TRANSFER LINES ARE NOT TO BE LESS THAN THE HH ALARM SWITCH OF F.O STORAGE TANKS.
- 8) FLOAT TYPE LEVEL SWITCH.
- 9) THE LAL VOLUME OF F.O SERVICE TANK SHALL BE KEPT 8 HOURS OPERATION OF 4 DG.
- 10) ROTARY DISPLACEMENT TYPE WITH LOCAL COUNTER.
- 11) 24 MESH.
- 12) 4" CAMLOCK CONNECTIONS.
- 13) FLEXIBLE HOSE'S ONE SIDE HAS LINKED GUN TYPE CONNECTOR TO FEED OIL
- 14) OVERFLOW : 95 % , LAH : 90% , LAL : 15 % , LC (STOP) : 85%

DETAIL "A"
SAMPLING COCK



REVISION HISTORY

- 1) MODIFIED CAPCITY.(2011.05.02)
- 2) AS PER PIPING'S REQUEST.(2011.05.18)
- 3) MODIFIED SAME AS H3610.(2011.06.24)
- 4) ADDED CHECK VALVE TO PREVENT REVERSE FLOW.(2011.07.07)

TAG NO.	DESCRIPTION	TYPE	CAPACITY
701-PP-120-A/B	NO.1/2 F.O TRANSFER PUMP	SCREW	35m3/h x 4bar
701-PP-120-C/D	NO.3/4 F.O TRANSFER PUMP	SCREW	35m3/h x 4bar
701-PP-120-E/F	NO.5/6 F.O TRANSFER PUMP	SCREW	35m3/h x 4bar

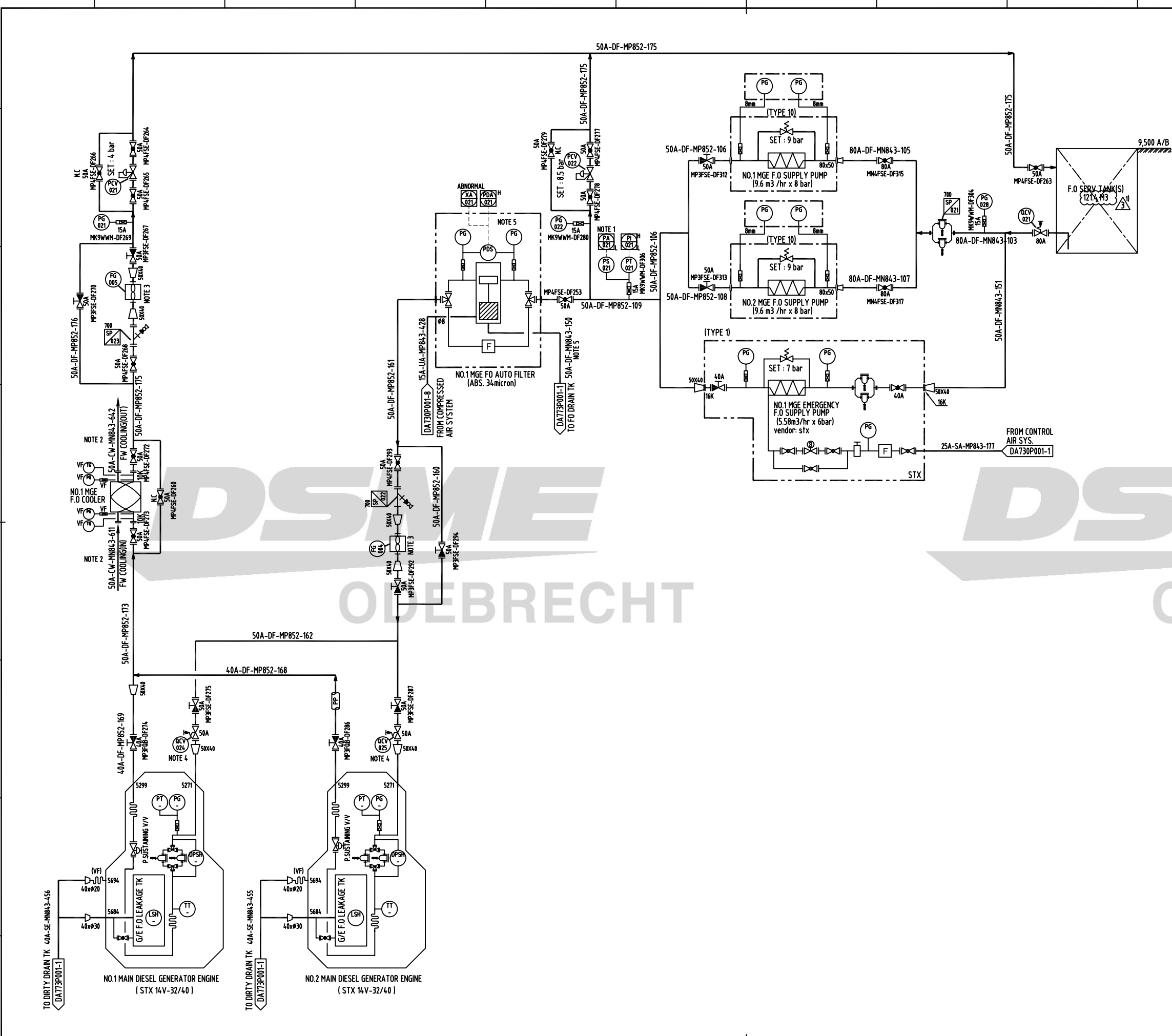
REV.	DATE	NOTE	DWN	CHK	CHEF	APP.BY
3	2011.07.12	ISSUED FOR REVISION	YKR	YKR	HCL	HCL
2	2011.04.15	ISSUED FOR REVISION	YKR	YKR	HCL	HCL
1	2010.10.28	ISSUED FOR REVISION	YKR	JJC	HCL	SDH
0	2010.05.24	APPROVED FOR CONSTRUCTION	YKR	BYJ	HCL	SDH
A	2010.04.26	ISSUED FOR APPROVAL	YKR	BYJ	HCL	SDH

DSME DAEWOO SHIPBUILDING & MARINE ENGINEERING CO.,LTD.

- ISSUED FOR INFORMATION
- ISSUED FOR APPROVAL
- ISSUED FOR CONSTRUCTION

DATE

PROJ. NO. 3609	DWYN BY (TEL.7930) Y.K.ROH	TITLE : PIPING & INSTRUMENT DIAGRAM PID OF FUEL OIL SYSTEM FILLING & TRANSFER	SHEET 1 / 8
DEPT OFFSHORE SYSTEM DESIGN TEAM	DATE 2011.07.12	SCALE NONE	DWG. NO. DA700P001
REV. NO.	DATE	SCALE	DWG. NO.



GENERAL NOTES
 G1) Spray shields are to be fitted around flanged joints, flanged bonnet and any other flanged or threaded connections in fuel oil piping system which are located above or near units of high temperature. also the number of joints in such piping system is to be kept to a minimum
 G2) ALL QCV : NOT LESS THAN 10K

NOTES
 1) LOW TO STANDBY PUMP RUNNING
 2) REFER TO DA722P001-9
 3) ROTARY DISPLACEMENT TYPE WITH LOCAL COUNTER.
 4) QCV-024/025-DA730P001-8
 5) SLUDGE DISCHARGE (FLUSHING)-10 LITER
 FLUSHING TIME (SEC) : 4-5 SEC
 FLUSHING INITIATED : AT 0.6 BAR
 AIR CONSUMPTION PER FLUSHING : 0.01 NM³

REVISION HISTORY
 1) MODIFIED CAPACITY.(2011.05.02)

TAGNO.	DESCRIPTION	TYPE	CAPACITY
651-DE-100-A/B	NO.1/2 MAIN DIESEL GENERATOR ENGINE	-	7000 KW
	NO.1 MGE F.O SUPPLY UNIT	PACKAGE	-
651-PP-100-A	NO.1 MGE EMERGENCY F.O PUMP	SCREW	5.58m ³ /h x 6bar
651-PP-110-A/B	NO.1/2 MGE F.O SUPPLY PUMP	SCREW	9.6m ³ /h x 7bar
703-HE-500-A	NO.1 MGE F.O COOLER	PLATE TYPE	85 KW

REV.	DATE	NOTE	DWN	CHK	CHIEF	APP.BY
3	2011.07.12	ISSUED FOR REVISION	YKR	YKR	HCL	HCL
2	2011.04.15	ISSUED FOR REVISION	YKR	YKR	HCL	HCL
1	2010.10.28	ISSUED FOR REVISION	YKR	JJC	HCL	SDH
0	2010.05.24	APPROVED FOR CONSTRUCTION	YKR	BYJ	HCL	SDH
A	2010.04.26	ISSUED FOR APPROVAL	YKR	BYJ	HCL	SDH

CHECK

PROJ. NO. 3609	DWN BY (TEL.7930) Y.K.ROH	TITLE: PIPING & INSTRUMENT DIAGRAM PID OF FUEL OIL SYSTEM SERVICE-S	SHEET 2 / 8
DEPT. OFFSHORE SYSTEM DESIGN TEAM	DATE 2011.07.12	SCALE NONE	DWG. NO. DA700P001

DAEWOO SHIPBUILDING & MARINE ENGINEERING CO., LTD.

GENERAL NOTES
 G1) Spray shields are to be fitted around flanged joints, flanged bonnet and any other flanged or threaded connections in fuel oil piping system which are located above or near units of high temperature. also the number of joints in such piping system is to be kept to a minimum
 G2) ALL QCV : NOT LESS THAN 10K

NOTES
 1) LOW TO STANDBY PUMP RUNNING
 2) REFER TO DA722P001-7
 3) ROTARY DISPLACEMENT TYPE WITH LOCAL COUNTER.
 4) QCV-034/035-DA730P001-7
 5) SLUDGE DISCHARGE (FLUSHING)-10 LITER
 FLUSHING TIME(SEC) : 4-5 SEC
 FLUSHING INITIATED : AT 0.6 BAR
 AIR CONSUMPTION PER FLUSHING : 0.01 NM

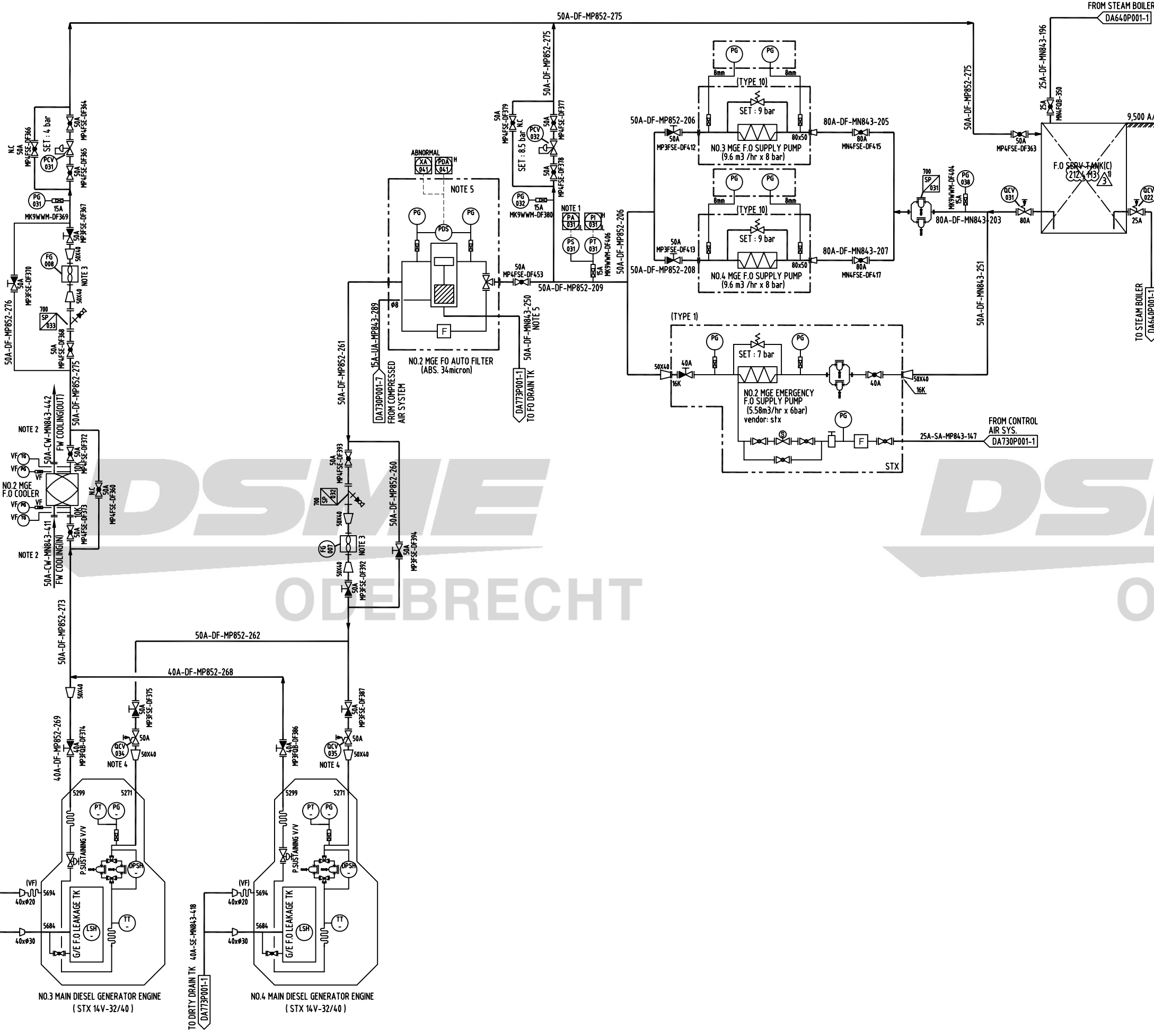
REVISION HISTORY
 1) MODIFIED CAPACITY.(2011.05.02)

TAGNO.	DESCRIPTION	TYPE	CAPACITY
651-DE-100-C/D	NO.3/4 MAIN DIESEL GENERATOR ENGINE	-	7000 KW
	NO.2 MGE F.O SUPPLY UNIT	PACKAGE	-
651-PP-100-B	NO.2 MGE EMERGENCY F.O PUMP	SCREW	5.58m3/h x 6bar
651-PP-110-C/D	NO.3/4 MGE F.O SUPPLY PUMP	SCREW	9.6m3/h x 7bar
703-HE-500-B	NO.2 MGE F.O COOLER	PLATE TYPE	85 KW

REV.	DATE	NOTE	DWN	CHK	CHIEF	APP.BY
3	2011.07.12	ISSUED FOR REVISION	YKR	YKR	HCL	HCL
2	2011.04.15	ISSUED FOR REVISION	YKR	YKR	HCL	HCL
1	2010.10.28	ISSUED FOR REVISION	YKR	JJC	HCL	SDH
0	2010.05.24	APPROVED FOR CONSTRUCTION	YKR	BYJ	HCL	SDH
A	2010.04.26	ISSUED FOR APPROVAL	YKR	BYJ	HCL	SDH

CHECK

PROJ. NO. 3609	DWN BY (TEL 7930) Y.K.ROH	TITLE : PIPING & INSTRUMENT DIAGRAM PID OF FUEL OIL SYSTEM SERVICE-C	DEPT OFFSHORE SYSTEM DESIGN TEAM	DATE 2011.07.12	SCALE NONE	DWG NO. DA700P001	SHEET 3 / 8
-------------------	------------------------------	--	-------------------------------------	--------------------	---------------	----------------------	-------------



GENERAL NOTES
 G1) Spray shields are to be fitted around flanged joints, flanged bonnet and any other flanged or threaded connections in fuel oil piping system which are located above or near units of high temperature. also the number of joints in such piping system is to be kept to a minimum
 G2) ALL QCV : NOT LESS THAN 10K

NOTES
 1) LOW TO STANDBY PUMP RUNNING
 2) REFER TO DA722P001-5
 3) ROTARY DISPLACEMENT TYPE WITH LOCAL COUNTER.
 4) QCV-044/045-DA730P001-6
 5) SLUDGE DISCHARGE (FLUSHING)-10 LITER
 FLUSHING TIME(SEC) : 4-5 SEC
 FLUSHING INITIATED : AT 0.6 BAR
 AIR CONSUMPTION PER FLUSHING : 0.01 NM³

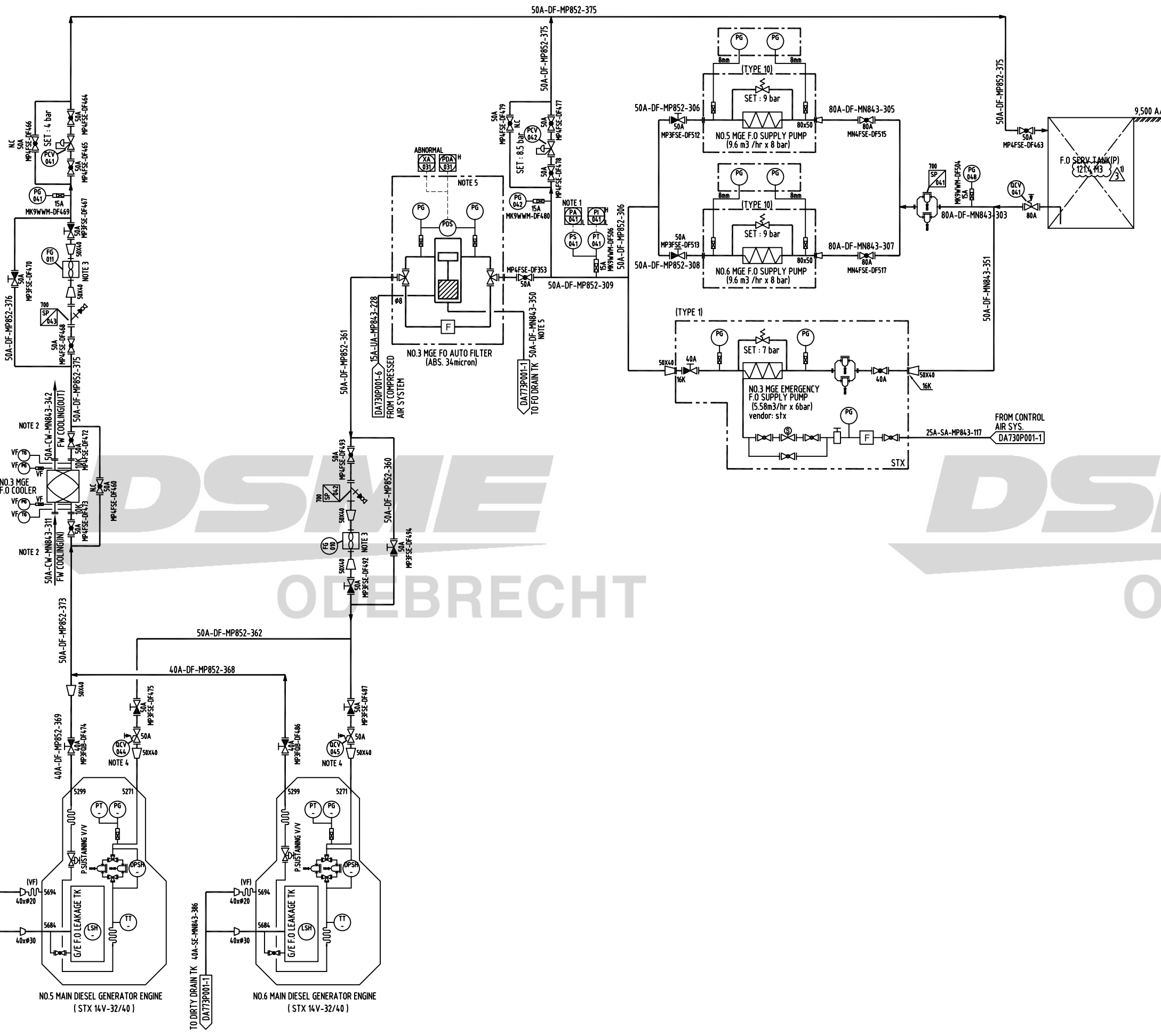
REVISION HISTORY
 1) MODIFIED CAPACITY.(2011.05.02)

TAGNO.	DESCRIPTION	TYPE	CAPACITY
651-DE-100-E/F	NO.5/6 MAIN DIESEL GENERATOR ENGINE	-	7000 KW
	NO.3 MGE F.O SUPPLY UNIT	PACKAGE	-
651-PP-100-C	NO.3 MGE EMERGENCY F.O PUMP	SCREW	5.58m ³ /h x 6bar
651-PP-110-E/F	NO.5/6 MGE F.O SUPPLY PUMP	SCREW	9.6m ³ /h x 7bar
703-HE-500-C	NO.3 MGE F.O COOLER	PLATE TYPE	85 KW

REV.	DATE	NOTE	DWN	CHK	CHIEF	APP.BY
3	2011.07.12	ISSUED FOR REVISION	YKR	YKR	HCL	HCL
2	2011.04.15	ISSUED FOR REVISION	YKR	YKR	HCL	HCL
1	2010.10.28	ISSUED FOR REVISION	YKR	JJC	HCL	SDH
0	2010.05.24	APPROVED FOR CONSTRUCTION	YKR	BYJ	HCL	SDH
A	2010.04.26	ISSUED FOR APPROVAL	YKR	BYJ	HCL	SDH

CHECK

PROJ. NO. 3609	DWN BY (TEL.7930) Y.K.ROH	TITLE : PIPING & INSTRUMENT DIAGRAM PID OF FUEL OIL SYSTEM SERVICE-P
DEPT OFFSHORE SYSTEM DESIGN TEAM	DATE 2011.07.12	SCALE NONE
	DWG. NO. DA700P001	REV. NO. A
	SHEET 4 / 8	



GENERAL NOTES

- G1) EVERY BY-PASS LINE AND DISCHARGE LINE TO F.O STORAGE TANK SHOULD BE KEPT MINIMUM BENDING AND AS STRAIGHT AS POSSIBLE.
- G2) F.O PURIFIER SHALL BE RUNNING CONTINUOUSLY WITH AN OVERFLOW TO F.O SETTLLING TANK.
- G3) ALL QCV : NOT LESS THAN 10K

NOTES

- 1) 1" BSP
- 2) 32 MESH
- 3) QUICK CLOSING V/V CONTROL AIR : DA730P001-12
- 4) FLEXIBLE HOSE TO BE INCLUDED INSIDE PUMP SKID (AIR INLET, SUCTION, DISCHARGE)

REVISION HISTORY

- 1) MODIFIED CAPACITY.(2011.05.02)

1. EQUIPMENTS		2. CONNECTIONS	
SJ	SELF EJECTOR (OIL PURIFIER)	A	DIRTY OIL INLET (F.O : from settling tank, L.O : from L.O tank)
WV	SOLENOID VALVE UNIT F.OR WATER (SV1, SV2, SV3, SV9)	B	PURIFIED OIL OUTLET (F.O : to service tank, L.O : to L.O tank)
MM	MULTI-MONITOR (including LM, DD, WD function)	C	SLUDGE & WATER OUTLET
LM	PRESSURE SENSOR F.OR LM FUNCTION	D	AIR VENT
DD	REVOLUTION SENSOR F.OR DD FUNCTION	E	WATER INLET(0.5 - 0.72 MPa (5.0 - 7.2 Kg/cm ²))
WD	PRESSURE SENSOR F.OR WD FUNCTION	F	COMPRESSED AIR INLET (0.5 - 0.99 MPa (5.0 - 9.9 Kg/cm ²))
AFR	AIR FILTER REGULATOR	G	CIRCULATION (F.O : to settling tank, L.O : to L.O tank)
TT	TEMP. TRANSMITTER F.OR TEMP. HIGH/LOW ALARM		
CV	3-WAY CYLINDER VALVE F.OR OIL FEEDING & CIRCULATION		
SP	SLUDGE DELIVERY PUMP		

	No.1 F.O PURIFIER A	No.2 F.O PURIFIER B
SV5	702-SV-105-A	702-SV-105-B
AFR	702-PCV-101-A	702-PCV-101-B
CV	702-CV-101-A	702-CV-101-B
TT	N/A	N/A
CP	702-PG-101-A	702-PG-101-B
SP	702-PP-100-A	702-PP-100-B
SV4	702-SV-104-A	702-SV-104-B

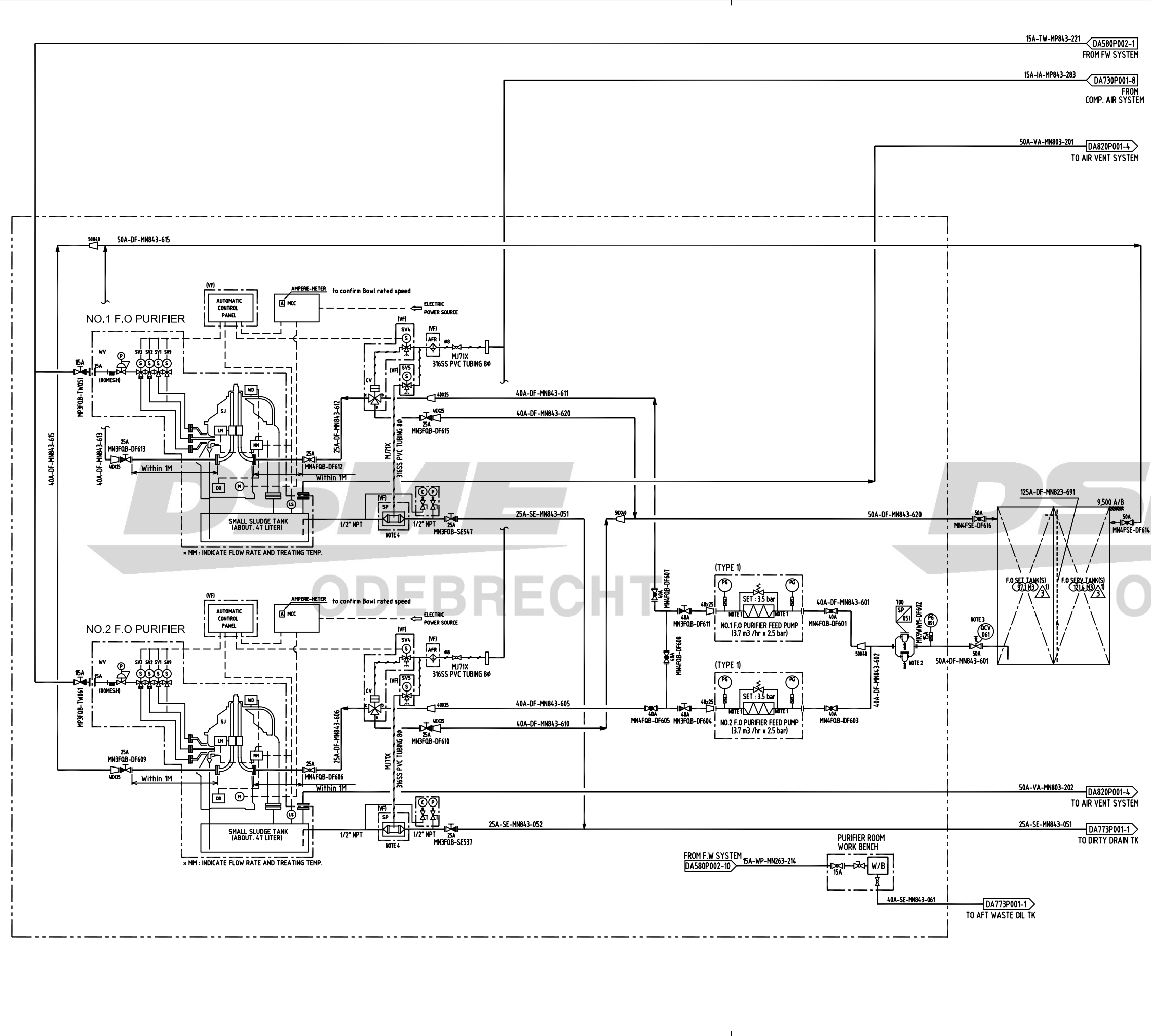
SYM	SYMBOL NAME	SYM	SYMBOL NAME	SYM	SYMBOL NAME
	GLOBE VALVE		BUTTERFLY VALVE		PRESSURE GAUGE
	S.D.N.R GLOBE VALVE		3-WAY CYLINDER V/V		COMPOUND GAUGE
	STOP VALVE		3-WAY SOLENOID V/V		LEVEL SWITCH
	COCK VALVE		AIR FILTER		MOTOR
	3-WAY TEST COCK V/V		ORIFICE		OIL, SLUDGE, DRAIN, WATER
	CHECK VALVE		STRAINER		AIR LINE
	NEEDLE VALVE		SIMPLEX OIL STRAINER		CAPILLARY LINE
	PRESS. REDUCING V/V		DUPLEX OIL STRAINER		ELECTRIC WIRING

TAGNO.	DESCRIPTION	TYPE	CAPACITY
702-DF-100-A/B	NO.1/2 F.O PURIFIER	CENTRIFUGAL	3.7m ³ /h
702-PP-110-A/B	NO.1/2 F.O PURIFIER FEED PUMP	SCREW	3.7m ³ /h x 2.5bar

REV.	DATE	NOTE	DWN	CHK	CHEF	APP.BY
3	2011.07.12	ISSUED FOR REVISION	YKR	YKR	HCL	HCL
2	2011.04.15	ISSUED FOR REVISION	YKR	YKR	HCL	HCL
1	2010.10.28	ISSUED FOR REVISION	YKR	JJC	HCL	SDH
0	2010.05.24	APPROVED FOR CONSTRUCTION	YKR	BYJ	HCL	SDH
A	2010.04.26	ISSUED FOR APPROVAL	YKR	BYJ	HCL	SDH

CHECK

PROJ. NO. 30009	DWN BY (TEL 7930) Y.K.ROH	TITLE : PIPING & INSTRUMENT DIAGRAM FUEL OIL SYSTEM M.D.O PURIFYING STBD	DEPT OFFSHORE SYSTEM DESIGN TEAM	DATE 2011.07.12	SCALE NONE	DWG. NO. DA700P001	SHEET 5 / 8
--------------------	------------------------------	--	-------------------------------------	--------------------	---------------	-----------------------	-------------



GENERAL NOTES
 G1) EVERY BY-PASS LINE AND DISCHARGE LINE TO F.O STORAGE TANK SHOULD BE KEPT MINIMUM BENDING AND AS STRAIGHT AS POSSIBLE.
 G2) F.O PURIFIER SHALL BE RUNNING CONTINUOUSLY WITH AN OVERFLOW TO F.O SETTLING TANK.
 G3) ALL QCV : NOT LESS THAN 10K

NOTES
 1) 1" BSP
 2) 32 MESH
 3) QUICK CLOSING V/V CONTROL AIR : DA730P001-12
 4) FLEXIBLE HOSE TO BE INCLUDED INSIDE PUMP SKID (AIR INLET, SUCTION, DISCHARGE)

REVISION HISTORY
 1) MODIFIED CAPACITY.(2011.05.02)

1. EQUIPMENTS		2. CONNECTIONS	
SJ	SELF EJECTOR (OIL PURIFIER)	A	DIRTY OIL INLET (F.O : from settling tank, L.O : from L.O tank)
WV	SOLENOID VALVE UNIT F.OR WATER (SV1, SV2, SV3, SV9)	B	PURIFIED OIL OUTLET (F.O : to service tank, L.O : to L.O tank)
MM	MULTI-MONITOR (including LM, DD, WD function)	C	SLUDGE & WATER OUTLET
LM	PRESSURE SENSOR F.OR LM FUNCTION	D	AIR VENT
DD	REVOLUTION SENSOR F.OR DD FUNCTION	E	WATER INLET(0.5 - 0.72 MPa (5.0 - 7.2 Kg/cm ²))
WD	PRESSURE SENSOR F.OR WD FUNCTION	F	COMPRESSED AIR INLET (0.5 - 0.99 MPa (5.0 - 9.9 Kg/cm ²))
AFR	AIR FILTER REGULATOR	G	CIRCULATION (F.O : to settling tank, L.O : to L.O tank)
TT	TEMP. TRANSMITTER F.OR TEMP. HIGH/LOW ALARM		
CV	3-WAY CYLINDER VALVE F.OR OIL FEEDING & CIRCULATION		
SP	SLUDGE DELIVERY PUMP		

	No.1 F.O PURIFIER C	No.2 F.O PURIFIER D
SV5	702-SV-105-C	702-SV-105-D
AFR	702-PCV-101-C	702-PCV-101-D
CV	702-CV-101-C	702-CV-101-D
TT	N/A	N/A
CP	702-PG-101-C	702-PG-101-D
SP	702-PP-100-C	702-PP-100-D
SV4	702-SV-104-C	702-SV-104-D

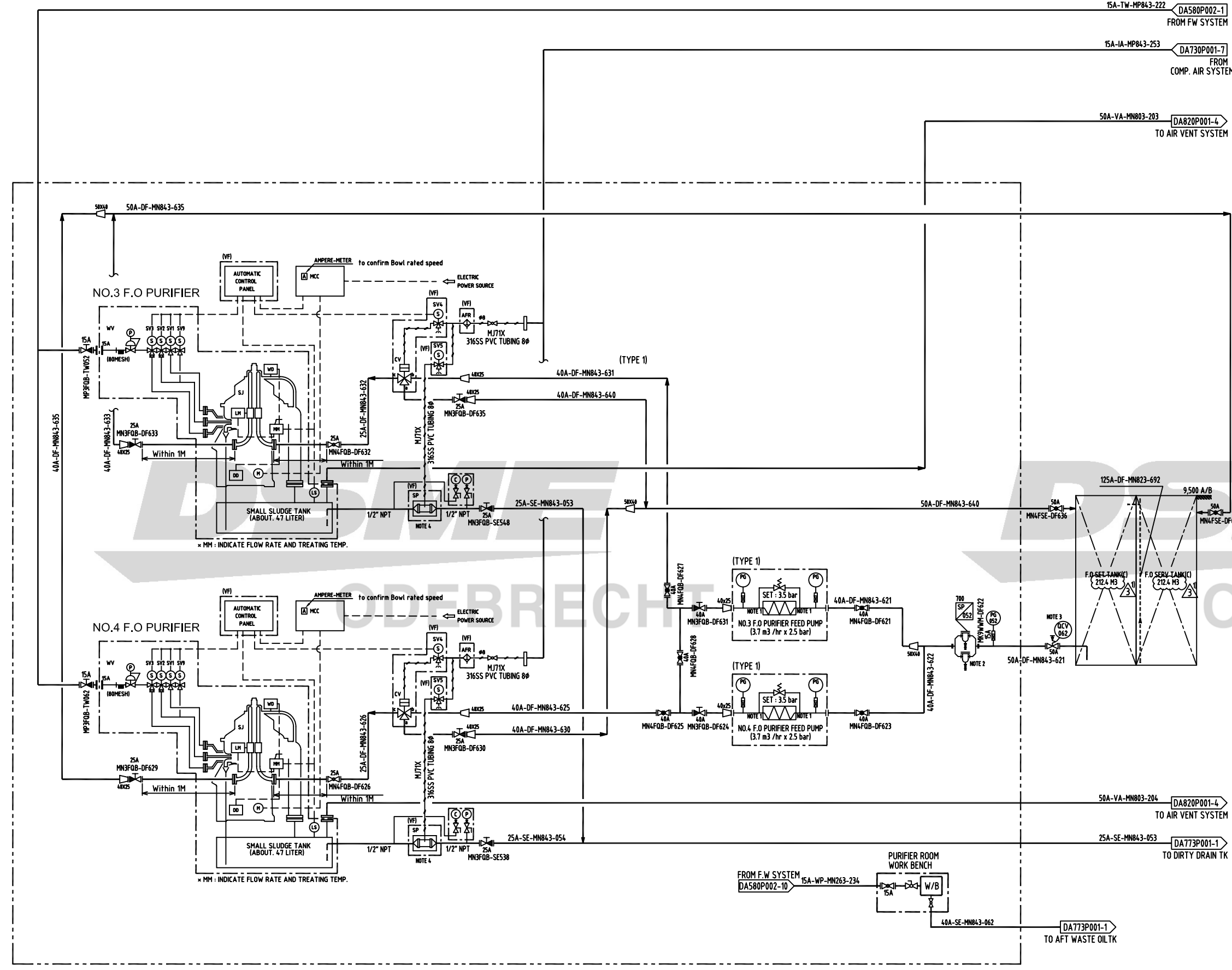
SYM	SYMBOL NAME	SYM	SYMBOL NAME	SYM	SYMBOL NAME
	GLOBE VALVE		BUTTERFLY VALVE		PRESSURE GAUGE
	S.D.N.R GLOBE VALVE		3-WAY CYLINDER V/V		COMPOUND GAUGE
	STOP VALVE		3-WAY SOLENOID V/V		LEVEL SWITCH
	COCK VALVE		AIR FILTER		MOTOR
	3-WAY TEST COCK V/V		ORIFICE		OIL, SLUDGE, DRAIN, WATER
	CHECK VALVE		STRAINER		AIR LINE
	NEEDLE VALVE		SIMPLEX OIL STRAINER		CAPILLARY LINE
	PRESS. REDUCING V/V		DUPLEX OIL STRAINER		ELECTRIC WIRING

TAGNO.	DESCRIPTION	TYPE	CAPACITY
702-DF-100-C/D	NO.3/4 F.O PURIFIER	CENTRIFUGAL	3.7m ³ /h
702-PP-110-C/D	NO.3/4 F.O PURIFIER FEED PUMP	SCREW	3.7m ³ /h x 2.5bar

REV.	DATE	NOTE	DWN	CHK	CHIEF	APP.BY
3	2011.07.12	ISSUED FOR REVISION	YKR	YKR	HCL	HCL
2	2011.04.15	ISSUED FOR REVISION	YKR	YKR	HCL	HCL
1	2010.10.28	ISSUED FOR REVISION	YKR	JJC	HCL	SDH
0	2010.05.24	APPROVED FOR CONSTRUCTION	YKR	BYJ	HCL	SDH
A	2010.04.26	ISSUED FOR APPROVAL	YKR	BYJ	HCL	SDH

CHECK

PROJ. NO. 3609	DWN BY (TEL.7930) Y.K.ROH	TITLE : PIPING & INSTRUMENT DIAGRAM FUEL OIL SYSTEM M.D.O PURIFYING CENT.	SHEET 6 / 8
DEPT. OFFSHORE SYSTEM DESIGN TEAM	DATE 2011.07.12	SCALE NONE	DWG. NO. DA700P001



GENERAL NOTES

- G1) EVERY BY-PASS LINE AND DISCHARGE LINE TO F.O STORAGE TANK SHOULD BE KEPT MINIMUM BENDING AND AS STRAIGHT AS POSSIBLE.
- G2) F.O PURIFIER SHALL BE RUNNING CONTINUOUSLY WITH AN OVERFLOW TO F.O SETTLING TANK.
- G3) ALL QCV : NOT LESS THAN 10K

NOTES

- 1) 1" BSP
- 2) 32 MESH
- 3) QUICK CLOSING V/V CONTROL AIR : DA730P001-12
- 4) FLEXIBLE HOSE TO BE INCLUDED INSIDE PUMP SKID (AIR INLET, SUCTION, DISCHARGE)

REVISION HISTORY

- 1) MODIFIED CAPACITY.(2011.05.02)

1. EQUIPMENTS

SJ	SELF EJECTOR (OIL PURIFIER)
WV	SOLENOID VALVE UNIT F.OR WATER (SV1, SV2, SV3, SV9)
MM	MULTI-MONITOR (including LM, DD, WD function)
LM	PRESSURE SENSOR F.OR LM FUNCTION
DD	REVOLUTION SENSOR F.OR DD FUNCTION
WD	PRESSURE SENSOR F.OR WD FUNCTION
AFR	AIR FILTER REGULATOR
TT	TEMP. TRANSMITTER F.OR TEMP. HIGH/LOW ALARM
CV	3-WAY CYLINDER VALVE F.OR OIL FEEDING & CIRCULATION
SP	SLUDGE DELIVERY PUMP

2. CONNECTIONS

A	DIRTY OIL INLET (F.O : from settling tank, L.O : from L.O tank)
B	PURIFIED OIL OUTLET (F.O : to service tank, L.O : to L.O tank)
C	SLUDGE & WATER OUTLET
D	AIR VENT
E	WATER INLET(0.5 - 0.72 MPa (5.0 - 7.2 Kg/cm ²))
F	COMPRESSED AIR INLET (0.5 - 0.99 MPa (5.0 - 9.9 Kg/cm ²))
G	CIRCULATION (F.O : to settling tank, L.O : to L.O tank)

	No.1 F.O PURIFIER E	No.2 F.O PURIFIER F
SV5	702-SV-105-E	702-SV-105-F
AFR	702-PCV-101-E	702-PCV-101-F
CV	702-CV-101-E	702-CV-101-F
TT	N/A	N/A
CP	702-PG-101-E	702-PG-101-F
SP	702-PP-100-E	702-PP-100-F
SV4	702-SV-104-E	702-SV-104-F

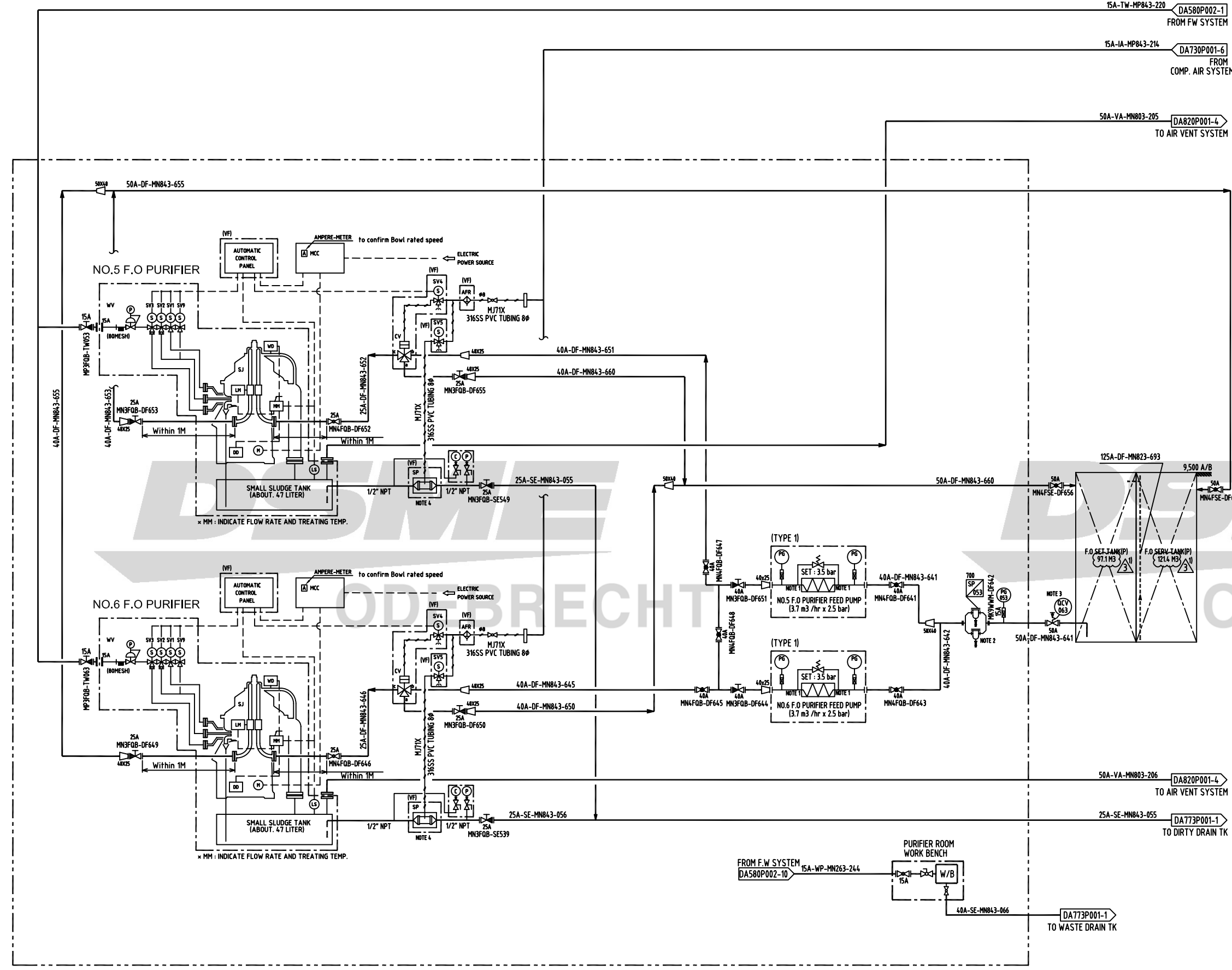
SYM	SYMBOL NAME	SYM	SYMBOL NAME	SYM	SYMBOL NAME
	GLOBE VALVE		BUTTERFLY VALVE		PRESSURE GAUGE
	S.D.N.R GLOBE VALVE		3-WAY CYLINDER V/V		COMPOUND GAUGE
	STOP VALVE		3-WAY SOLENOID V/V		LEVEL SWITCH
	COCK VALVE		AIR FILTER		MOTOR
	3-WAY TEST COCK V/V		ORIFICE		OIL, SLUDGE, DRAIN, WATER
	CHECK VALVE		STRAINER		AIR LINE
	NEEDLE VALVE		SIMPLEX OIL STRAINER		CAPILLARY LINE
	PRESS. REDUCING V/V		DUPLEX OIL STRAINER		ELECTRIC WIRING

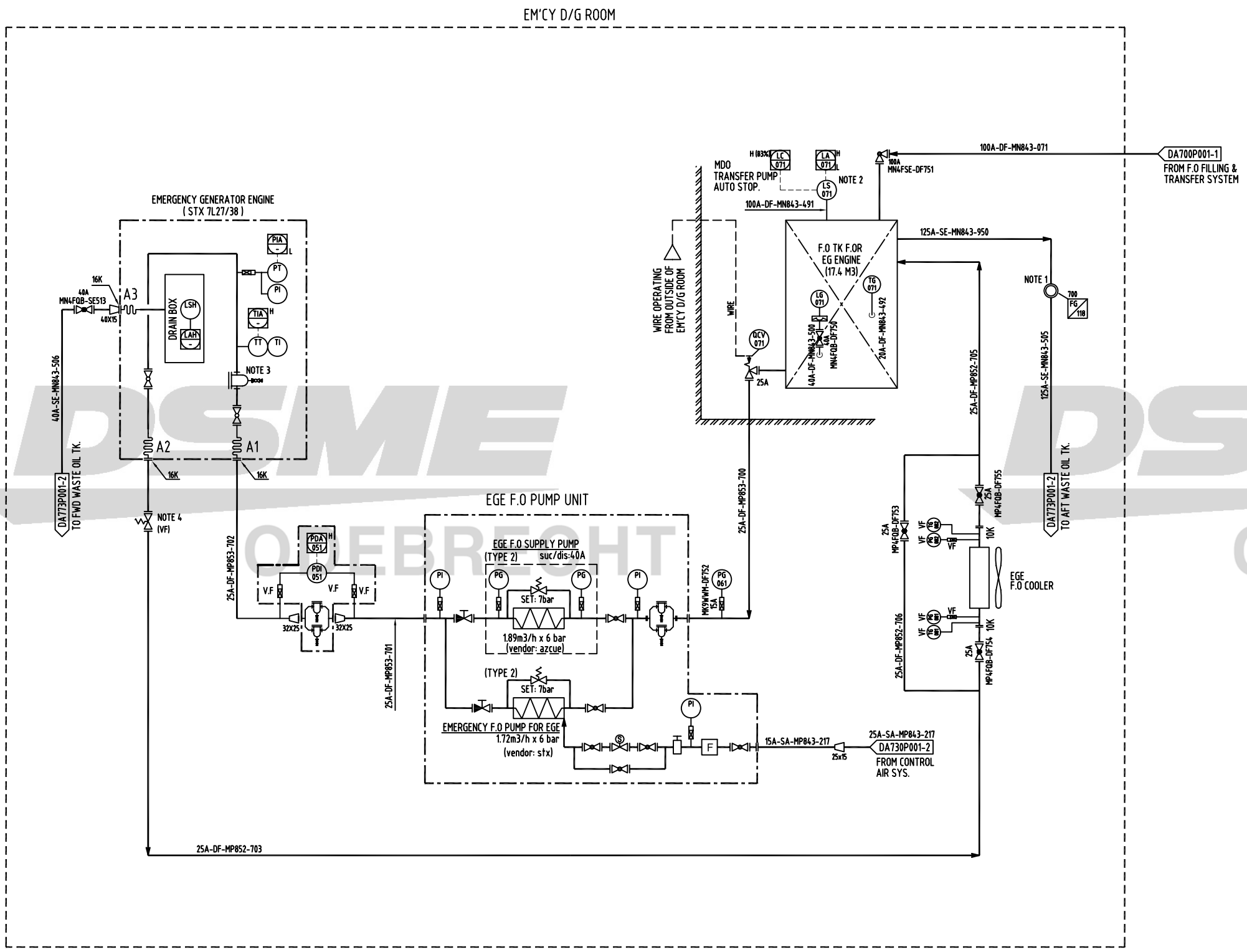
TAGNO.	DESCRIPTION	TYPE	CAPACITY
702-DF-100-E/F	NO.5/6 F.O PURIFIER	CENTRIFUGAL	3.7m ³ /h
702-PP-110-E/F	NO.5/6 F.O PURIFIER FEED PUMP	SCREW	3.7m ³ /h x 2.5bar

REV.	DATE	NOTE	DWN	CHK	CHIEF	APP.BY
3	2011.07.12	ISSUED FOR REVISION	YKR	YKR	HCL	HCL
2	2011.04.15	ISSUED FOR REVISION	YKR	YKR	HCL	HCL
1	2010.10.28	ISSUED FOR REVISION	YKR	JJC	HCL	SDH
0	2010.05.24	APPROVED FOR CONSTRUCTION	YKR	BYJ	HCL	SDH
A	2010.04.26	ISSUED FOR APPROVAL	YKR	BYJ	HCL	SDH

CHECK

PROJ. NO. 3609	DWN BY (TEL.7930) Y.K.ROH	TITLE : PIPING & INSTRUMENT DIAGRAM FUEL OIL SYSTEM M.D.O PURIFYING PORT	SHEET 7 / 8
DEPT. OFFSHORE SYSTEM DESIGN TEAM	DATE 2011.07.12	SCALE NONE	DWG. NO. DA700P001





GENERAL NOTES

G1) ---

NOTES

- 1) SIGHT GLASS WITH LIGHT.
- 2) LAH : F.O TRANSFER PUMP TO BE STOPPED.
- 3) TO BE REMOVED BEFORE SHIP DELIVERY.
- 4) SETTING PRESSURE : 2-3 BAR

REVISION HISTORY

TAGNO.	DESCRIPTION	TYPE	CAPACITY
653-DE-100-A	EMERGENCY GENERATOR ENGINE	-	2,100 KW/ 720 RPM
701-PP-140-A	EGE F.O SUPPLY PUMP UNIT	PACKAGE	-
653-PP-100-A	EMERGENCY F.O PUMP FOR EGE (VENDOR: STX)	SCREW	1.72m3/h x 6bar
653-HE-200-A	EGE F.O COOLER	RADIAT. TYPE	10 KW
653-FC-100-A	EGE DUFLEX FILTER	-	50 micron

REV.	DATE	NOTE	DWN	CHK	CHIEF	APP.BY
3	2011.07.12	ISSUED FOR REVISION	YKR	YKR	HCL	HCL
2	2011.04.15	ISSUED FOR REVISION	YKR	YKR	HCL	HCL
1	2010.10.28	ISSUED FOR REVISION	YKR	JJC	HCL	SDH
0	2010.05.24	APPROVED FOR CONSTRUCTION	YKR	BYJ	HCL	SDH
A	2010.04.26	ISSUED FOR APPROVAL	YKR	BYJ	HCL	SDH

CHECK

PROJ. NO. 3609	DEPT. OFFSHORE SYSTEM DESIGN TEAM	DWN BY (TEL 7930) Y.K.ROH	TITLE : PIPING & INSTRUMENT DIAGRAM FUEL OIL SYSTEM EM DG SERVICE	SCALE NONE	DWG. NO. DA700P001	SHEET 8 / 8
-------------------	--------------------------------------	------------------------------	--	---------------	-----------------------	----------------