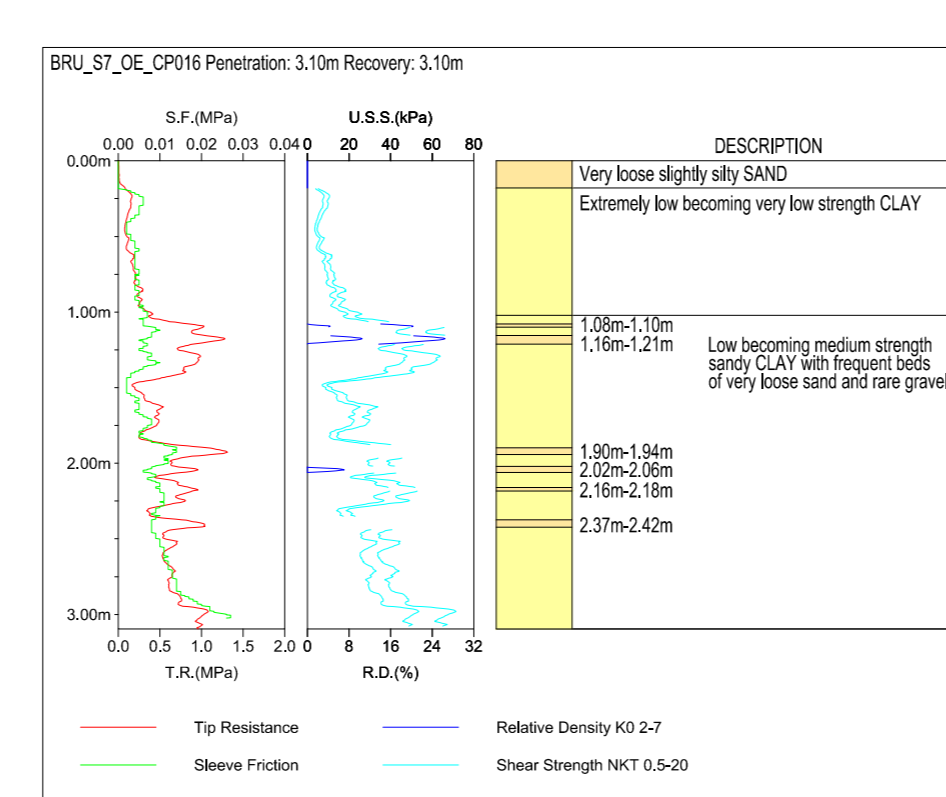
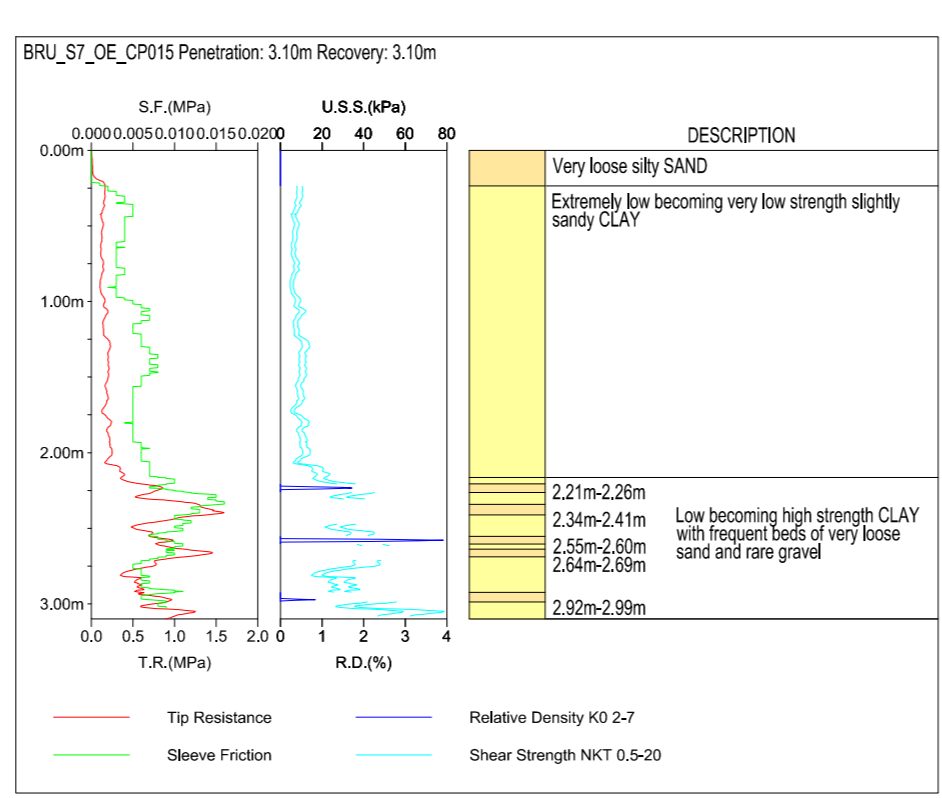


BRU_S7_OC009 Penetration 2.0m Recovery: 2.0m

DEPTH (m)	SEABED	SP	SP2
0.00m			
1.00m			

Soft very low strength dark grey CLAY
Soft very low strength dark grey CLAY
Soft very low strength dark grey silty sandy CLAY with fine shell fragments



CARTOGRAPHIC SYMBOLS

	Post Survey Route with kilometre post and reverse kilometre post		Telecommunications cable position, in Service/Out of Service/Planned (As found in magenta)
	Beach Mark/Alter Course		Pipeline position, in Service/Out of Service/Planned (As found in magenta)
	Survey Route		Power cable position, in Service/Out of Service/Planned (As found in magenta)
	Coastline (from Admiralty Charts)		Chart Matchline
			Territorial Sea / EEZ limit

BATHYMETRY

	Bathymetric contours in metres. Contour interval may be reduced to aid in clarity. All bathymetry reduced to Lowest Astronomical Tide (LAT)		Approximate limit of swath bathymetry coverage (shown only in areas of fair seabed)
	Downslope gradient in degrees (°) as measured over the shortest significant distance		

SEABED FEATURES AND SHALLOW GEOLOGY

	Coral		Isolated sonar contact with reference number (length x width x height in metres where measurable; n/m = no measurable height)
	Gas seepage area with predominant sediment classification		Linear sonar contact, dashed where partially buried
	Fine sediment (predominantly CLAY/SLT)		Unidentified magnetic anomaly with reference number and amplitude
	Coarse sediment (SAND and GRAVEL)		Cable/Pipeline position, as determined by magnetometer, with reference number and amplitude
	Very coarse sediment (COBBLES and BOULDERS)		Seabed sample location with reference number (OC (Piston Core), OS (Grab Sample), DS (Diver Sample), DP (Diver Probe), SP (Beach Probed))
	Subseafloor ROCK with predominant sediment classification (sediment thickness = target burial depth)		MiniCPT (CPT) Location with reference number
	ROCK outcrop		Small outcrop of rock with height in metres if discernible
	HARDGROUND (Very dense/consolidated sediment)		Seabed DEPRESSION or ROCKMARK with diameter (d) and depth (D) in metres, where discernible
	Sediment or feature boundary		Orientation of SANDWAVE crest (with wavelength and height in metres)
	Inferred Sediment or Feature Boundary		Orientation of MEGARIPPLE crest (with wavelength and height in metres)
	Approximate limit of side scan sonar coverage and survey swath		Orientation of sediment ribbon
	Seabed scar (trail or anchor)		Fault with depth below seafloor (hachures on down side)
	Charted or reported wreck		Isobath Contours shown at 1m interval with labels every 1m
	Dumping ground database position		Located wreck with reference number (length x width x height in metres where measurable)
	Well / Platform		Anchorage Area / Fishing Area (Admiralty chart position)
	Oil Concession Block		Anchorage / Fishing Prohibited (Admiralty chart position)

CHART COMMENT:

GENERAL NOTES:

SURVEY VESSEL: M.V. Ocean Endeavour	M.V. Capibara III
Surface positioning system: Furgo Starline HP 1000SS	Applan POSMV Watermaster, Verpos LDS
Underwater positioning system: Sonarbyte Ranger 1 USBL	Reson Seabat T-20
Bathymetry: Kongsberg EM1002, Kongsberg EM600 Combi	
Morphology and stratigraphy: Edgetech 4200-FS, Kongsberg Chirp and prap, SIB Seaprobe SSS/SBP	Edgetech 4200 MP, Kongsberg Geosonics, Chirp/SIB
Magnetometer survey: Geometrics S82	Marine Magnetics Seagay
Geotechnical: Kullenberg Piston Core, Neptune 3000 CPT	Van Veen Grab Sampler

Target burial depth: 1.0m below seabed

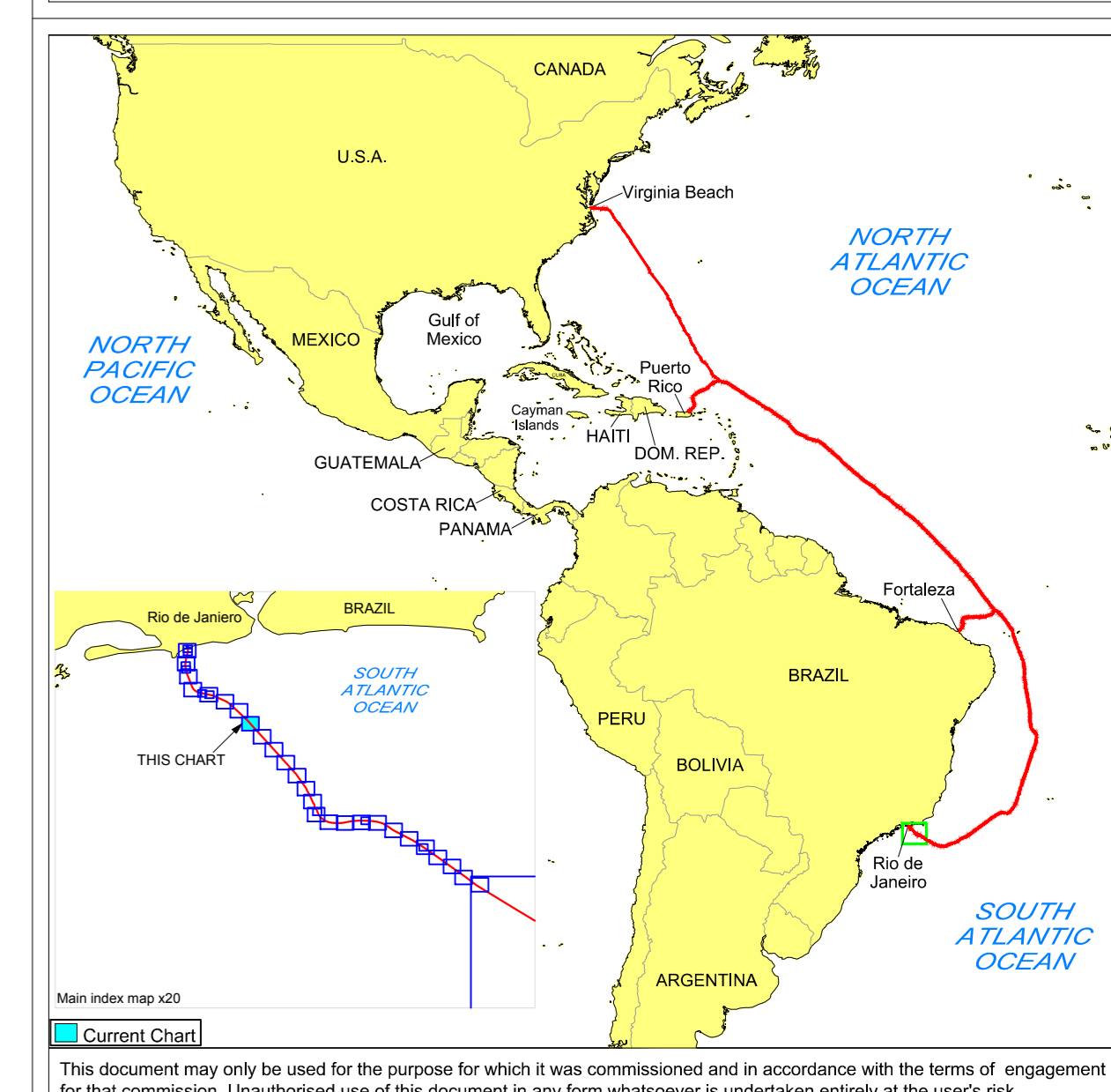
Descriptive Terms and Definitions:
The criteria used for interpretation and descriptions are presented in the Survey Results

Multibeam Processing Parameters: Depths in metres, reduced to LAT

Predictions used from tide stations: Rio de Janeiro, Brazil

GEODETIC PARAMETERS:

Projection: MERCATOR	Scale Factor: 1
Longitude of Origin: 53°W	Datum: WGS84
Standard Parallel: 7°N	False Easting: 3 000 000
Semi-Major Axis (a) (metres): 6378137.000	False Northing: 5 000 000
Reciprocal Flattening (1/f): 298.257223563	



This document may only be used for the purpose for which it was commissioned and in accordance with the terms of engagement for that commission. Unauthorised use of this document in any form whatsoever is undertaken entirely at the user's risk.

Survey Date: MAY to AUGUST 2016

Scale: NATURAL SCALE 1 : 10,000 at 7°N

(At Mid-Latitude of Chart)
TITLE SCALE: 1 : 9251.20 km

Purchaser: TELXIUS | Contractor: Alcatel-Lucent

Surveyor: Gardline

Project Name: BRUSA CABLE ROUTE SURVEY

Document Title: SEGMENT 7 NORTH-UP CHART CHART NO. 062 OF 071 (KP 3598.516 - KP 3608.463)

01	16.06.2016	JSRM	PB	CB
00	24.06.2016	JSRM	PB	CB

Rev Date Prepared by Checked by Approved by

ROUTE BASED UPON: BRUSA.PSR02 | File Name: BRUSA.S7.NU062

REVISION 01