

CARTOGRAPHIC SYMBOLS

| | | | |
|--|--|--|---|
| | Post Survey Route with kilometre post and reverse kilometre post | | Telecommunications cable position, in service, Out of Service/Planned (As found in magenta) |
| | Beach Mark | | Pipeline position, in Service/Out of Service/Planned (As found in magenta) |
| | Alter Course | | Power cable position, in Service/Out of Service (As found in magenta) |
| | Survey Route | | Chart Matchline |
| | Coastline (from Admiralty Charts) | | Territorial Sea / EEZ limit |

BATHYMETRY

| | | | |
|--|---|--|--|
| | Bathymetric contours in metres. Contour interval may be reduced to aid in clarity. All bathymetry reduced to Lowest Astronomical Tide (LAT) | | Approximate limit of swath bathymetry coverage (shown only in areas of full swath) |
| | Downslope gradient in degrees (°) as measured over the shortest significant distance | | |

SEABED FEATURES AND SHALLOW GEOLOGY

| | | | |
|--|--|--|--|
| | Coral | | Isolated sonar contact with reference number (length x width x height in metres where measurable; n/n = no measurable height) |
| | Gas seepage area with predominant sediment classification | | Linear sonar contact, dashed where partially buried |
| | Fine sediment (predominantly CLAY/SILT) | | Unidentified magnetic anomaly with reference number and amplitude |
| | Coarse sediment (SAND and GRAVEL) | | Seabed sample location with reference number: GC (Pinger Core), GS (Grab Sample), DS (Diver Sample), DP (Diver Probing), SP (Beam Probing) |
| | Very coarse sediment (COBBLES and BOULDERS) | | MHCPT (CP), Location with reference number |
| | Subsiding ROCK with predominant sediment classification (sediment thickness = target burial depth) | | Small outcrop of rock with height in metres if discernible |
| | ROCK outcrop | | Seabed DEPRESSION or POCHEMARK with diameter (d) and depth (D) in metres, where discernible |
| | HARDGROUND (Very dense/irregularly bedded sediment) | | Orientation of SANDWAVE crest (with wavelength and height in metres) |
| | Sediment or feature boundary | | Orientation of MEGARIPPLE crest (with wavelength and height in metres) |
| | Inferred Sediment or Feature Boundary | | Orientation of sediment ribbon |
| | Approximate limit of side scan sonar coverage and survey swath | | Fault with depth below seabed (fractures on down side) |
| | Seabed scar (trawl or anchor) | | Charted or reported wreck |
| | Dumping ground database position | | Wreck with reference no. (length x width x height in metres where measurable) |
| | Wall / Platform | | Anchorage Area / Fishing Area (Admiralty chart position) |
| | OT Concession Block | | Anchorage / Fishing Prohibited (Admiralty chart position) |

CHART COMMENT:

GENERAL NOTES:

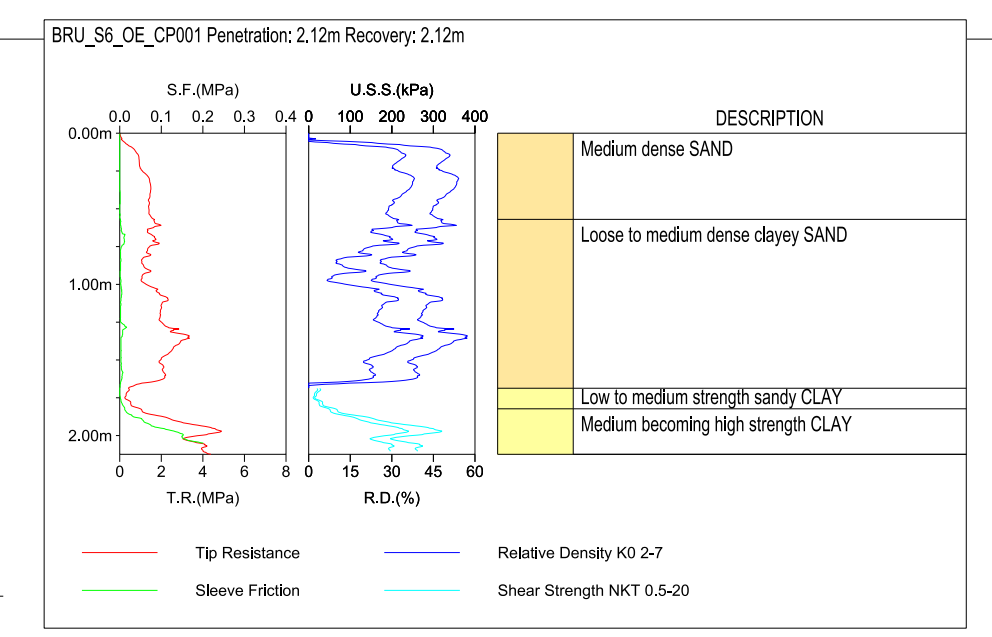
SURVEY VESSEL: M.V. Ocean Endeavour
Surface positioning system: Fuga Starlink 02685
Bathymetry: Kongsberg EM1002, Kongsberg EM1201, Kongsberg S400 Combi

Descriptive Terms and Definitions:
 The criteria used for interpretation and descriptions are presented in the Survey Results

GEODETIC PARAMETERS:

Projection : MERCATOR
 Longitude of Origin : 53°W
 Standard Parallel : 7°N
 Semi-Major Axis (a) (metres) : 6378137.000
 Reciprocal Flattening (1/f) : 298.257223563

Scale Factor : 1
 Datum : WGS84
 False Easting : 3 000 000
 False Northing : 5 000 000



Scale : **NATURAL SCALE 1 : 5,000 at 7°N**

(At Mid-Latitude of Chart) TRUE SCALE 1:2000 @ 0°

Contractor : **Acatel-Lucent**

Surveyor : **Gardline**

Project Name : **BRUSA CABLE ROUTE SURVEY**

Document Title : **SEGMENT 6 NORTH UP CHART CHART NO. 003 OF 017 (KP 4.105 - KP 9.320)**

| | | | | |
|-----|------------|-------------|------------|-------------|
| 01 | 30.09.2016 | HH | SK | CB |
| Rev | Date | Prepared by | Checked by | Approved by |

ROUTE BASED UPON: BRUSA S6 P5R08 File Name: BRUSA.S6.NU003

REVISION 1.1