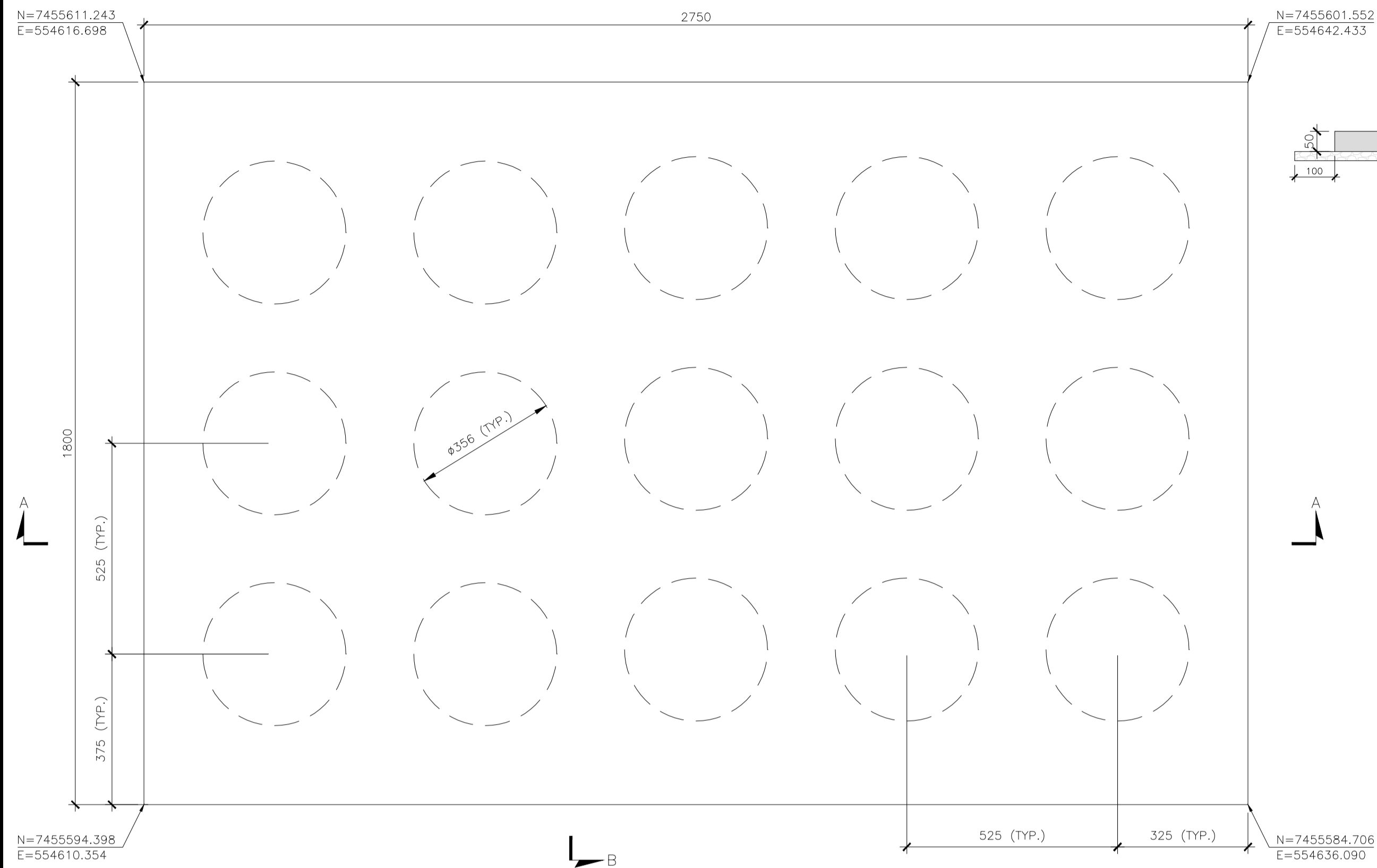
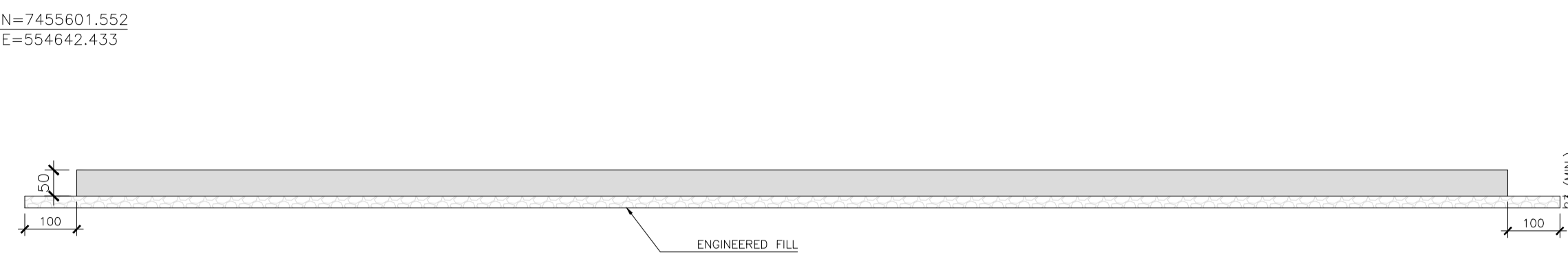


FORMWORK

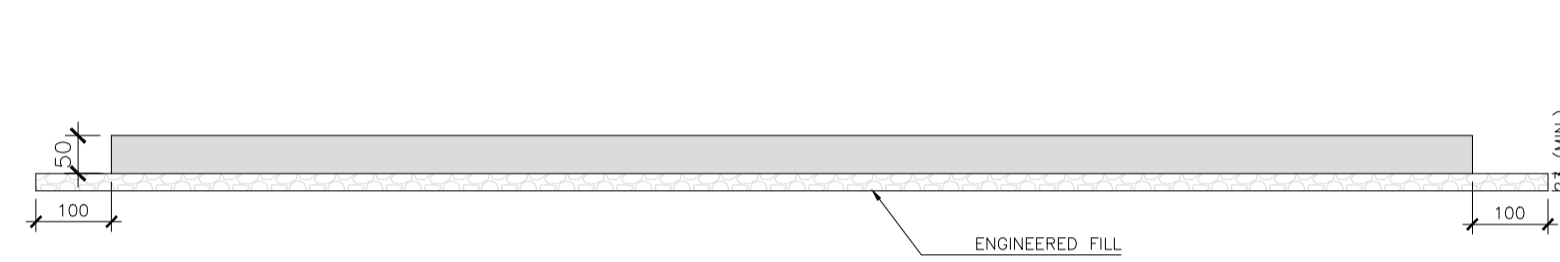
PLAN
ESCALA 1:100



SECTION A-A
ESCALA 1:100

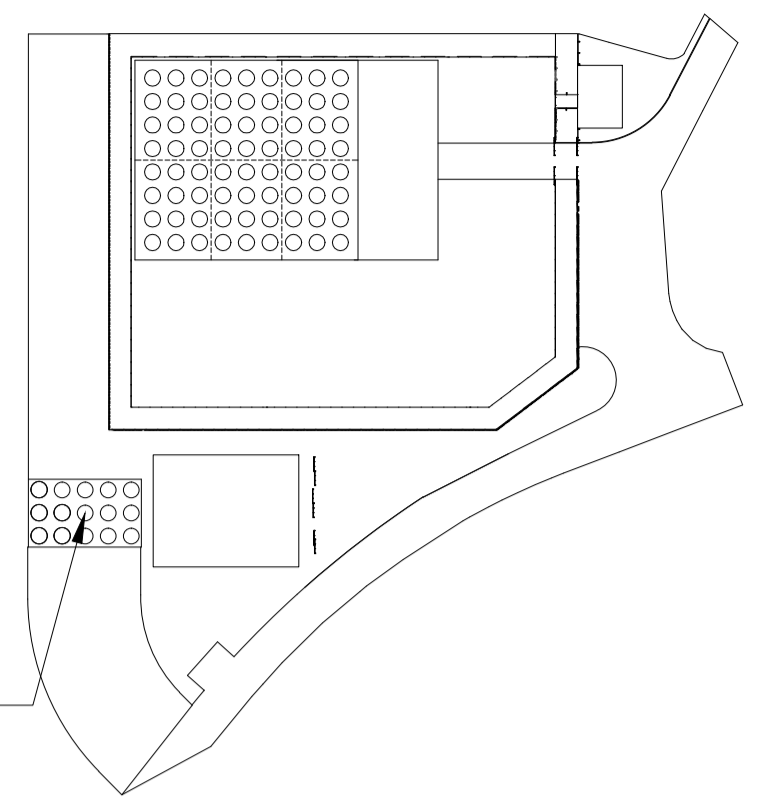


SECTION B-B
ESCALA 1:100



KEY PLAN

CONCRETE
FABRICATION PAD



REFERENCE DOCUMENTS:

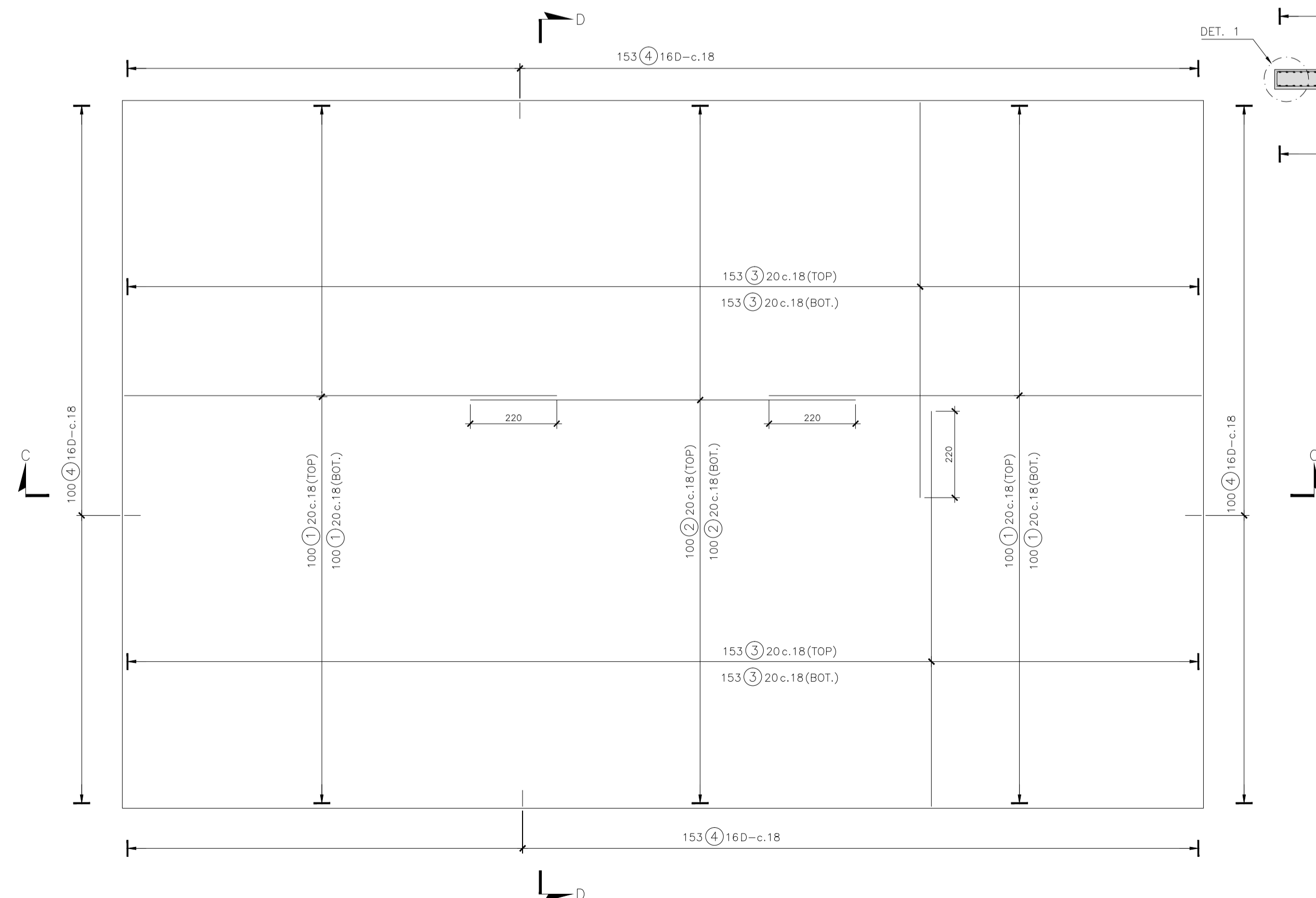
- 11090: GENERAL ISFSI LAYOUT - 72 CASK ARRAY - SHEETS 1 OF 2 AND 2 OF 2.
- UAS-1-200-0830 BL: STRUCTURE - CONCRETE FABRICATION PAD - BARS LIST.

NOTES:

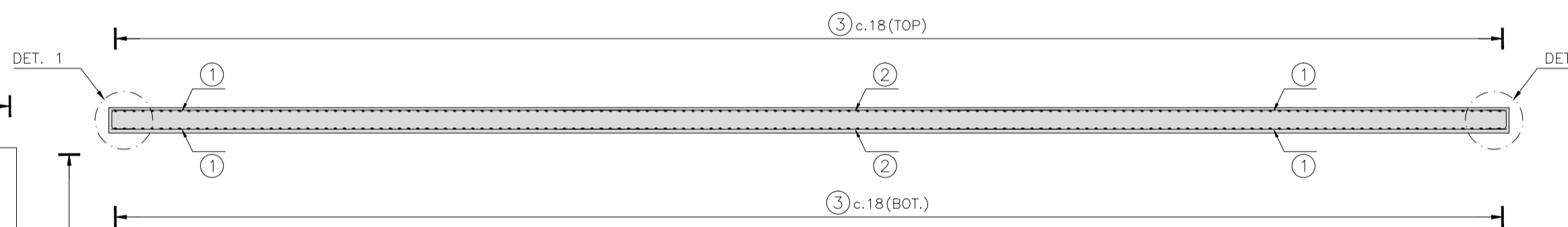
- 1 - ALL DIMENSIONS ARE IN CENTIMETER, BARS DIAMETER IN MILIMETER, COORDINATES AND LEVELS IN METER, UNLESS SPECIFIED OTHERWISE.
- 2 - CONCRETE STRENGTH
 - STRUCTURAL CONCRETE: C30 - fck=30MPa, WITH ADITION MICRO-SILICA IN THE RATIO OF 5% CEMENT WEIGHT
 - REGULARIZATION CONCRETE: C10 - fck=10MPa
- 3 - WATER/CEMENT FACTOR: < 0,50
- 4 - CEMENT CONSUPTION: > 320 kg/m³
- 5 - REINFORCEMENT STEEL: CA-50 - fyk=500 MPa
- 6 - CLASS OF ENVIRONMENTAL AGGRESSIVENESS: III (ACCORDING TO THE CLASSIFICATION DEFINED IN PARAGRAPH 6.4.2 OF STANDARD ABNT NBR 6118)
- 7 - ALLOWBLE BEARING CAPACITY: 200 kPa
- 8 - STRUCTURAL CONCRETE VOLUME: 221 m³
- 9 - CONCRETE COVER
 - BOTTOM REINFORCEMENT: 7,5cm;
 - TOP AND LATERAL REINFORCEMENT: 5cm.
- 10 - PROVIDE ADDITIONAL BAR FOR REINFORCEMENT SUPORT.
- 11 - FOR BARS LIST SEE DOCUMENT UAS-1-200-0830 BL.

REINFORCEMENT

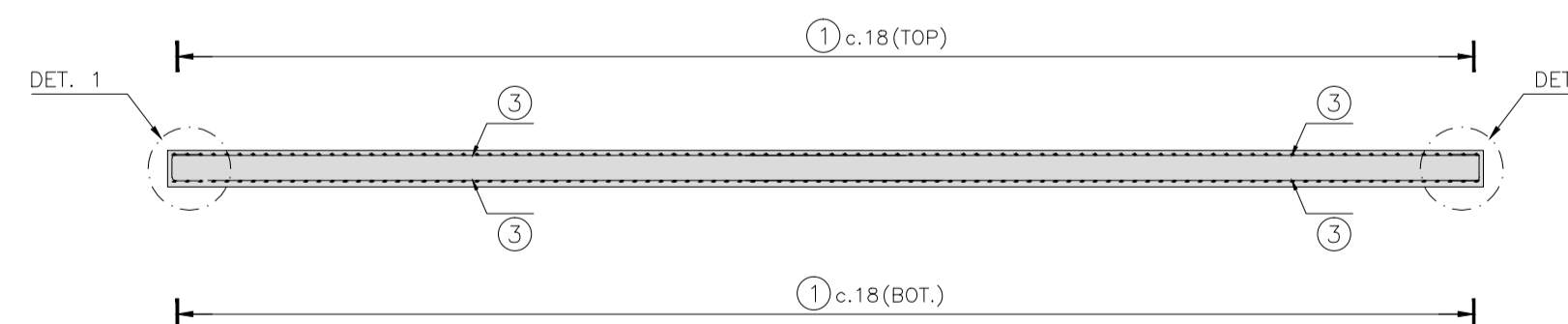
PLAN
ESCALA 1:100



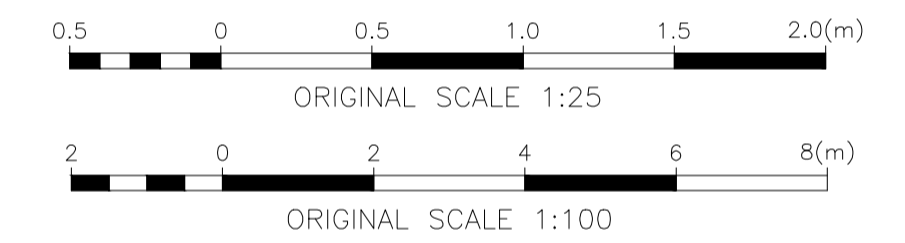
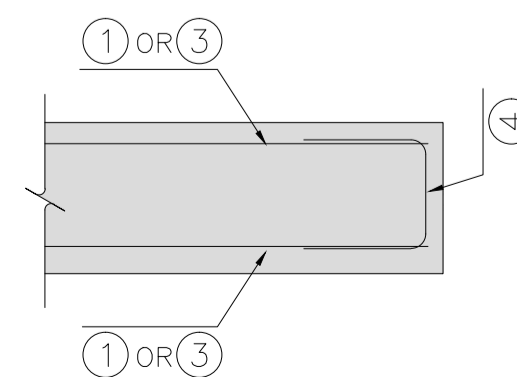
SECTION C-C
ESCALA 1:100



SECTION D-D
ESCALA 1:100



DETAIL 1
ESCALA 1:25



Rev. Nº:	DESCRIPTION	DATE	PREPARED	CHECKED	APPROVED	APPROVED	DATE
R2	REVISED COORDINATES ACCORDING TO DDF-2776-159	10/10/19	FSG	ACA	MCLRB		
R1	REVISED ACCORDING TO DDF-2776-137	10/09/19	FSG	ACA	MCLRB		
R0	INITIAL ISSUE, FOR APPROVAL.	07/09/18	FSG	ACA	MCLRB		

SONDOTÉCNICA		HOLTEC	
THIS DRAWING PACKAGE IS THE INTELLECTUAL PROPERTY OF HOLTEC INTERNATIONAL FOR MANUFACTURING THE COMPONENT BASED ON THE LICENSING BASIS AND DESIGN BASIS. DISSEMINATION OF THIS DRAWING PACKAGE TO ANY ENTITY OTHER THAN THE SYSTEM DESIGNER (HOLTEC) IS STRICTLY PROHIBITED WITHOUT WRITTEN CONSENT OF A HOLTEC CORPORATE OFFICER.			
SDT Nº:	UAS-1-200-0824		
TECHNICAL RESP / CREA Nº:	HVMC / 2001792638		
ART Nº:	2020180051312		
PROJECT CLIENT:	ANGRA NPP (BRAZIL) TURNKEY DRY FUEL STORAGE		
TITLE:	STRUCTURE CONCRETE FABRICATION PAD FORMWORK AND REINFORCEMENT		
SAFETY CATEGORY:	NITS	SIZE	A1
	PROJECT NO.	2776	DRAWING NO.
			SHEET
			1 OF 1

		USINA NUCLEAR DE ANGRA UAS	
TITLE STRUCTURE CONCRETE FABRICATION PAD FORMWORK AND REINFORCEMENT			
ELETROBRAS TERMONUCLEAR S.A. - ELETRONUCLEAR			
1 st ISSUE		DATE	NAME
PREPARED	CHECKED		
CHECKED	APPROVED		
DRAWING Nº:		SCALE INDICATED	
VJ-U-UAS-006021		R0	