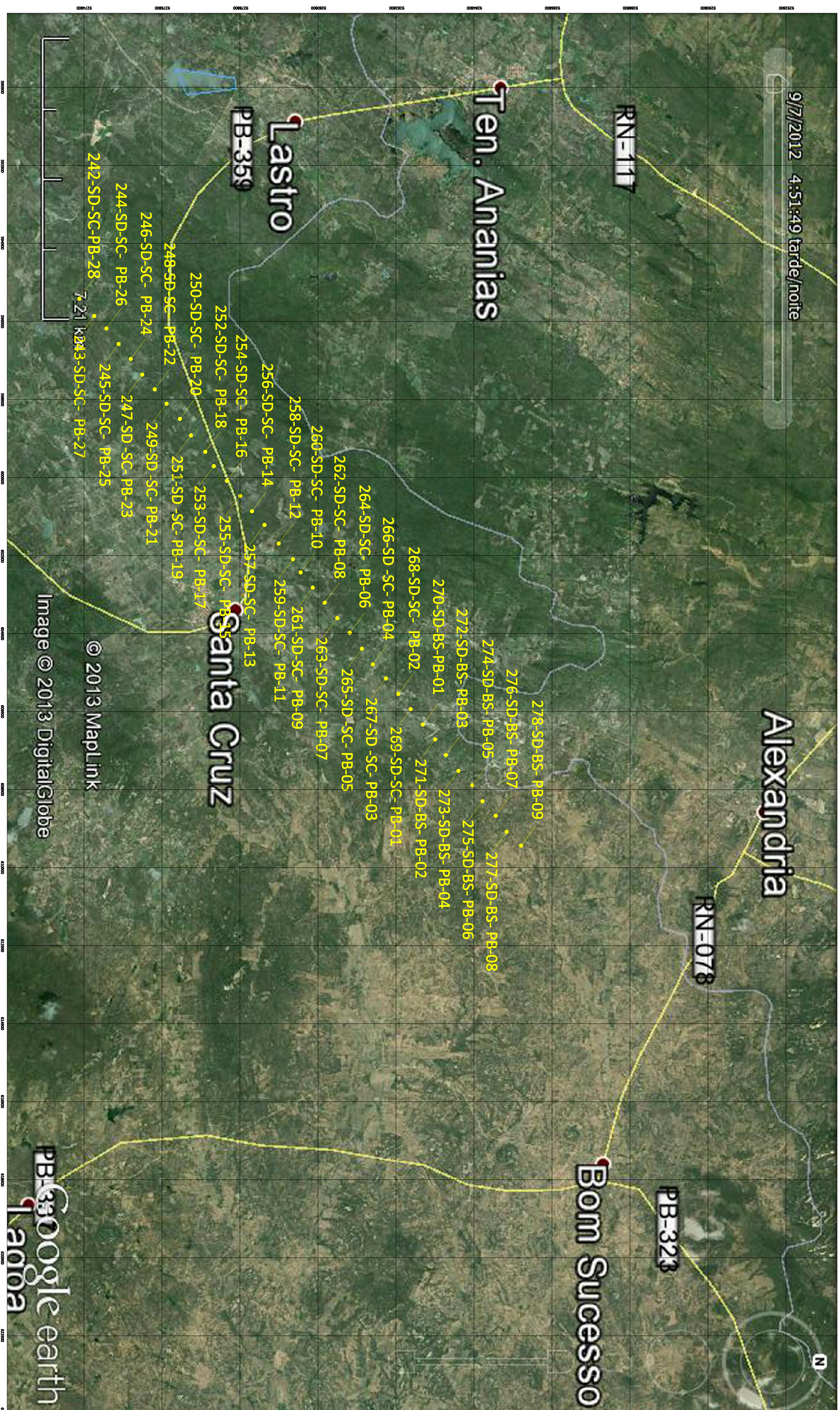
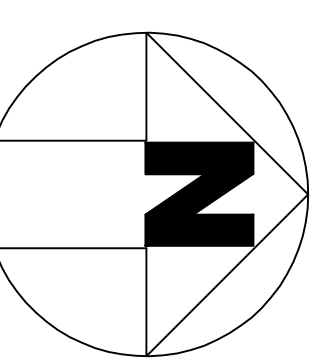


LT Milagres II Açú III - FASE I - DIAGNÓSTICO INTERVENTIVO
 Trecho Santa Cruz - PB Área II



PONTO	INTERVENÇÃO	DATA	X	Y	Z
242-SD-SC - PB-28	SC-10	17/11/13	603333	9278356	330
243-SD-SC - PB-27	SC-10	17/11/13	603333	9278356	330
244-SD-SC - PB-26	SC-10	17/11/13	603333	9278356	330
245-SD-SC - PB-25	SC-10	17/11/13	603333	9278356	330
246-SD-SC - PB-24	SC-10	17/11/13	603333	9278356	330
247-SD-SC - PB-23	SC-10	17/11/13	603333	9278356	330
248-SD-SC - PB-22	SC-10	17/11/13	603333	9278356	330
249-SD-SC - PB-21	SC-10	17/11/13	603333	9278356	330
250-SD-SC - PB-20	SC-10	17/11/13	603333	9278356	330
251-SD-SC - PB-19	SC-10	17/11/13	603333	9278356	330
252-SD-SC - PB-18	SC-10	17/11/13	603333	9278356	330
253-SD-SC - PB-17	SC-10	17/11/13	603333	9278356	330
254-SD-SC - PB-16	SC-10	17/11/13	603333	9278356	330
255-SD-SC - PB-15	SC-10	17/11/13	603333	9278356	330
256-SD-SC - PB-14	SC-10	17/11/13	603333	9278356	330
257-SD-SC - PB-13	SC-10	17/11/13	603333	9278356	330
258-SD-SC - PB-12	SC-10	17/11/13	603333	9278356	330
259-SD-SC - PB-11	SC-10	17/11/13	603333	9278356	330
260-SD-SC - PB-10	SC-10	17/11/13	603333	9278356	330
261-SD-SC - PB-09	SC-10	17/11/13	603333	9278356	330
262-SD-SC - PB-08	SC-10	17/11/13	603333	9278356	330
263-SD-SC - PB-07	SC-10	17/11/13	603333	9278356	330
264-SD-SC - PB-06	SC-10	17/11/13	603333	9278356	330
265-SD-SC - PB-05	SC-10	17/11/13	603333	9278356	330
266-SD-SC - PB-04	SC-10	17/11/13	603333	9278356	330
267-SD-SC - PB-03	SC-10	17/11/13	603333	9278356	330
268-SD-SC - PB-02	SC-10	17/11/13	603333	9278356	330
269-SD-SC - PB-01	SC-10	17/11/13	603333	9278356	330
270-SD-BS - PB-01	SC-10	17/11/13	603333	9278356	330
271-SD-BS - PB-02	SC-10	17/11/13	603333	9278356	330
272-SD-BS - PB-03	SC-10	17/11/13	603333	9278356	330
273-SD-BS - PB-04	SC-10	17/11/13	603333	9278356	330
274-SD-BS - PB-05	SC-10	17/11/13	603333	9278356	330
275-SD-BS - PB-06	SC-10	17/11/13	603333	9278356	330
276-SD-BS - PB-07	SC-10	17/11/13	603333	9278356	330
277-SD-BS - PB-08	SC-10	17/11/13	603333	9278356	330
278-SD-BS - PB-09	SC-10	17/11/13	603333	9278356	330

PONTO	INTERVENÇÃO	DATA	X	Y	Z
242-SD-SC - PB-28	SC-10	17/11/13	603333	9278356	330
243-SD-SC - PB-27	SC-10	17/11/13	603333	9278356	330
244-SD-SC - PB-26	SC-10	17/11/13	603333	9278356	330
245-SD-SC - PB-25	SC-10	17/11/13	603333	9278356	330
246-SD-SC - PB-24	SC-10	17/11/13	603333	9278356	330
247-SD-SC - PB-23	SC-10	17/11/13	603333	9278356	330
248-SD-SC - PB-22	SC-10	17/11/13	603333	9278356	330
249-SD-SC - PB-21	SC-10	17/11/13	603333	9278356	330
250-SD-SC - PB-20	SC-10	17/11/13	603333	9278356	330
251-SD-SC - PB-19	SC-10	17/11/13	603333	9278356	330
252-SD-SC - PB-18	SC-10	17/11/13	603333	9278356	330
253-SD-SC - PB-17	SC-10	17/11/13	603333	9278356	330
254-SD-SC - PB-16	SC-10	17/11/13	603333	9278356	330
255-SD-SC - PB-15	SC-10	17/11/13	603333	9278356	330
256-SD-SC - PB-14	SC-10	17/11/13	603333	9278356	330
257-SD-SC - PB-13	SC-10	17/11/13	603333	9278356	330
258-SD-SC - PB-12	SC-10	17/11/13	603333	9278356	330
259-SD-SC - PB-11	SC-10	17/11/13	603333	9278356	330
260-SD-SC - PB-10	SC-10	17/11/13	603333	9278356	330
261-SD-SC - PB-09	SC-10	17/11/13	603333	9278356	330
262-SD-SC - PB-08	SC-10	17/11/13	603333	9278356	330
263-SD-SC - PB-07	SC-10	17/11/13	603333	9278356	330
264-SD-SC - PB-06	SC-10	17/11/13	603333	9278356	330
265-SD-SC - PB-05	SC-10	17/11/13	603333	9278356	330
266-SD-SC - PB-04	SC-10	17/11/13	603333	9278356	330
267-SD-SC - PB-03	SC-10	17/11/13	603333	9278356	330
268-SD-SC - PB-02	SC-10	17/11/13	603333	9278356	330
269-SD-SC - PB-01	SC-10	17/11/13	603333	9278356	330
270-SD-BS - PB-01	SC-10	17/11/13	603333	9278356	330
271-SD-BS - PB-02	SC-10	17/11/13	603333	9278356	330
272-SD-BS - PB-03	SC-10	17/11/13	603333	9278356	330
273-SD-BS - PB-04	SC-10	17/11/13	603333	9278356	330
274-SD-BS - PB-05	SC-10	17/11/13	603333	9278356	330
275-SD-BS - PB-06	SC-10	17/11/13	603333	9278356	330
276-SD-BS - PB-07	SC-10	17/11/13	603333	9278356	330
277-SD-BS - PB-08	SC-10	17/11/13	603333	9278356	330
278-SD-BS - PB-09	SC-10	17/11/13	603333	9278356	330



BRUNNEN ENGINEERING CONSULTING

BOURSCHIED
ENGENHARIA E MEIO AMBIENTE S.A.