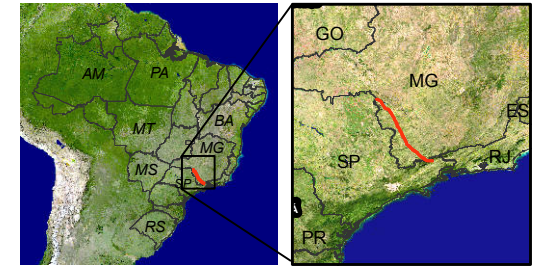







PLANTA CHAVE

MAPA DE LOCALIZAÇÃO

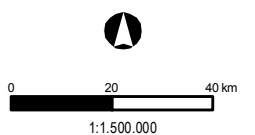


LEGENDA

-  Estação Climatológica
-  Estação Fluviométrica
-  LT 500 kV Estreito - Cachoeira Paulista C1 C2
-  AE - Área de Estudo
-  Municípios Área de Estudo

NOTAS

Fonte: Centro de Sismologia - USP (1900 - 2017)
 SIRGAS 2000
 Projection: Transverse Mercator
 Central Meridian: -51



Cliente **EDP Transmissão SP-MG S.A.**

Aprovação _____ Data _____

ESTAÇÕES CLIMATOLÓGICAS E FLUVIOMÉTRICAS
 ÁREA DE ESTUDO

LT 500 KV ESTREITO - CACHOEIRA PAULISTA C1/C2

Des. Nº	Revisão	Folha	Escala
L18-MP-F-6.2.2-015	0	1/1	1:1.500.000