

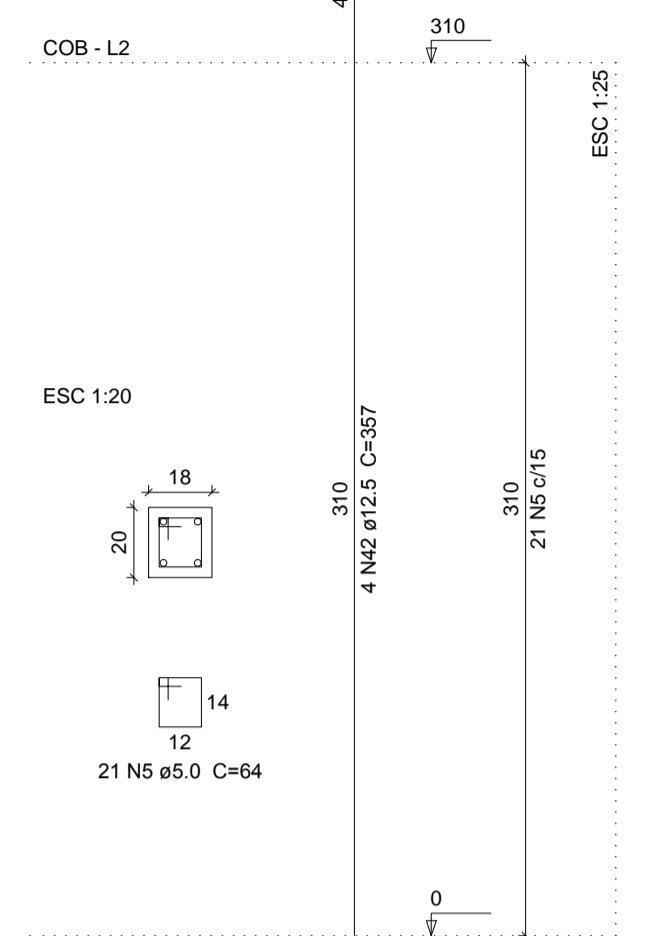
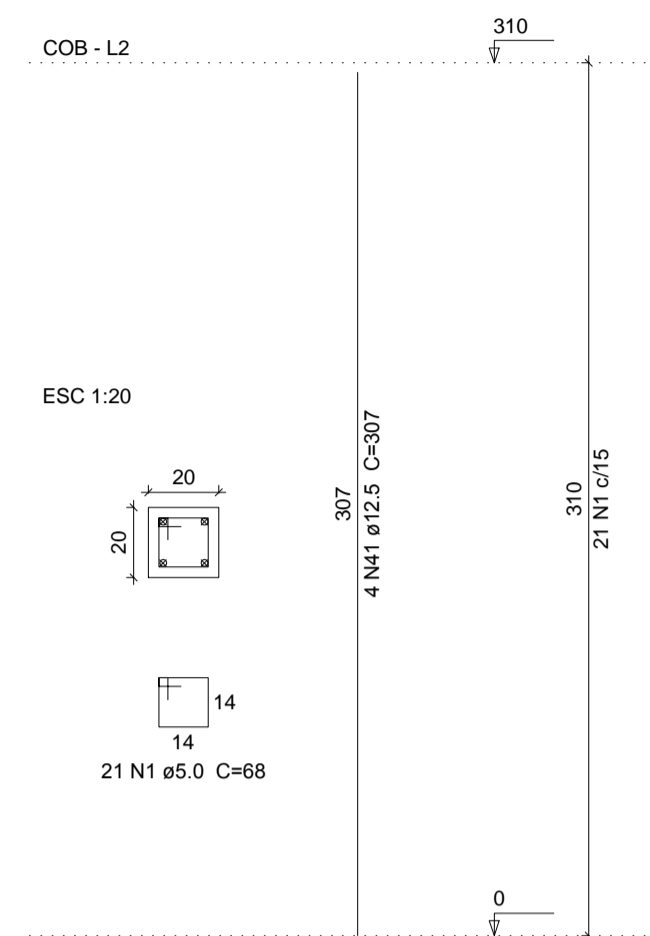
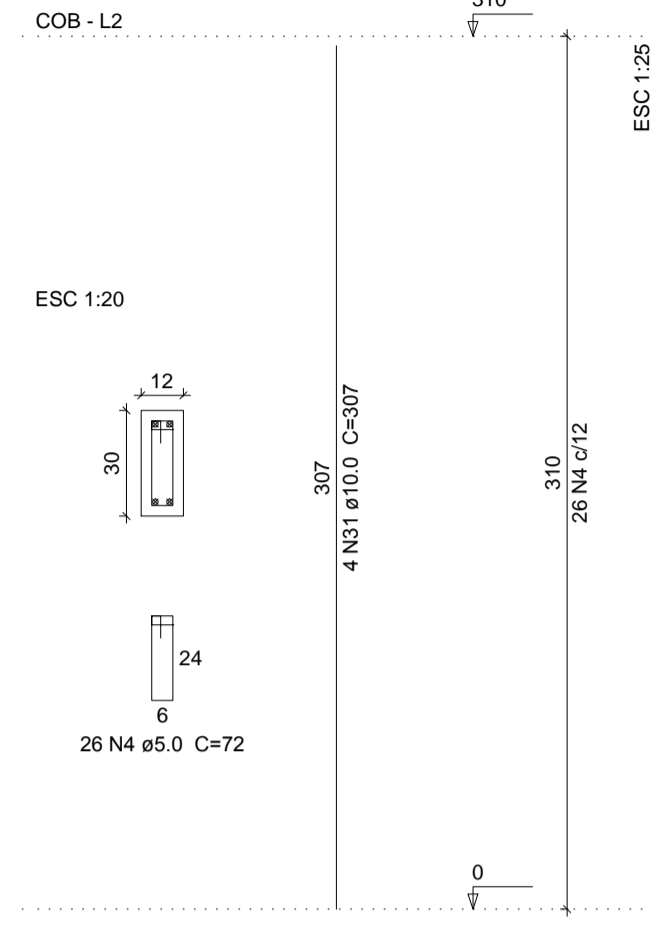
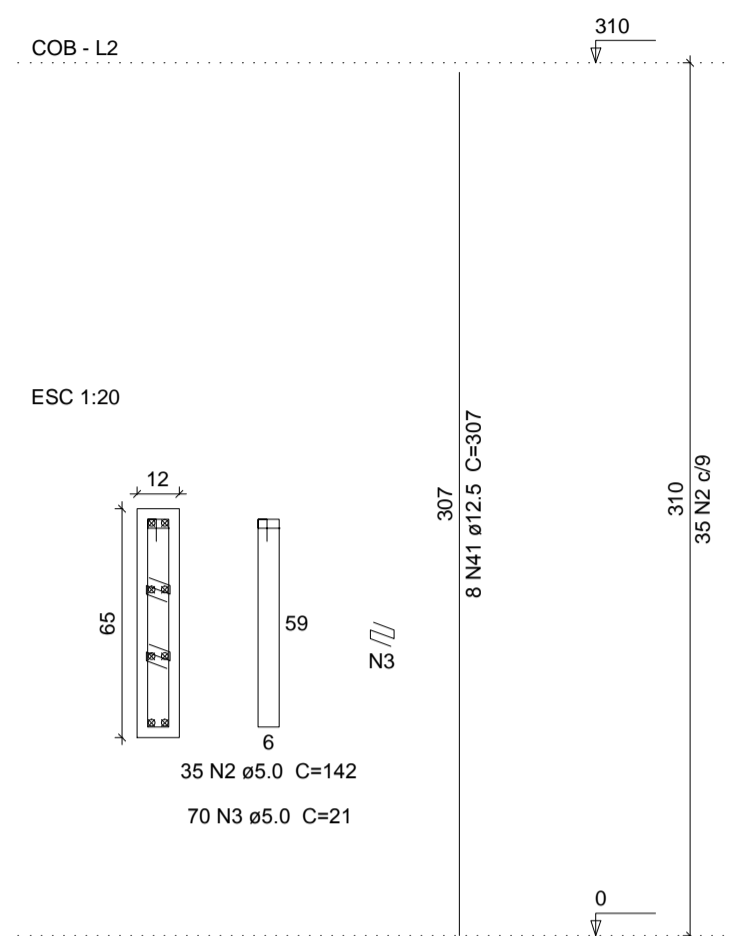
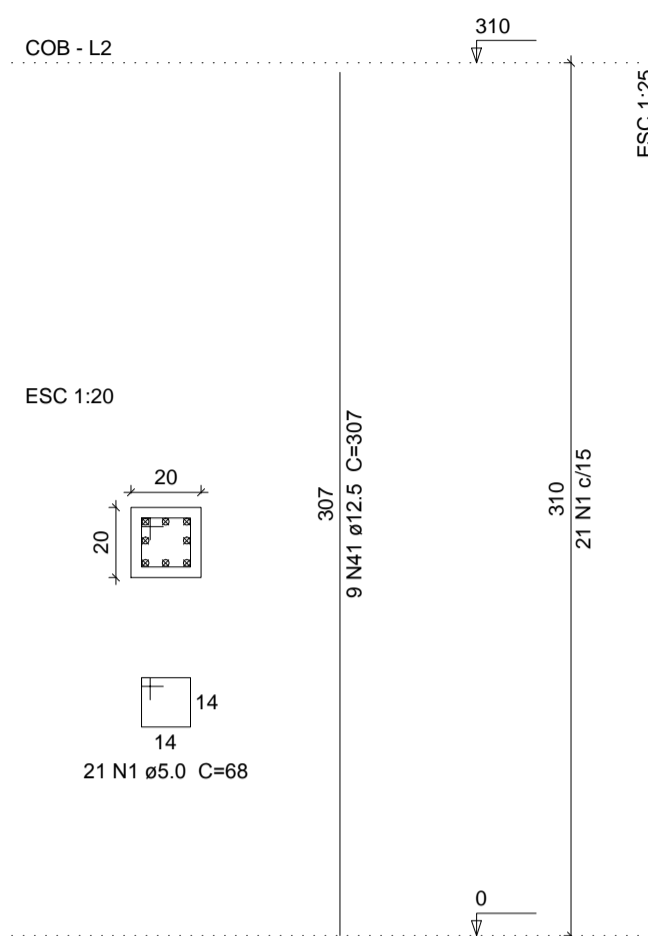
P 1=P 2=P 8=P 11=P 26=P 27=P 28=P 29

P 3

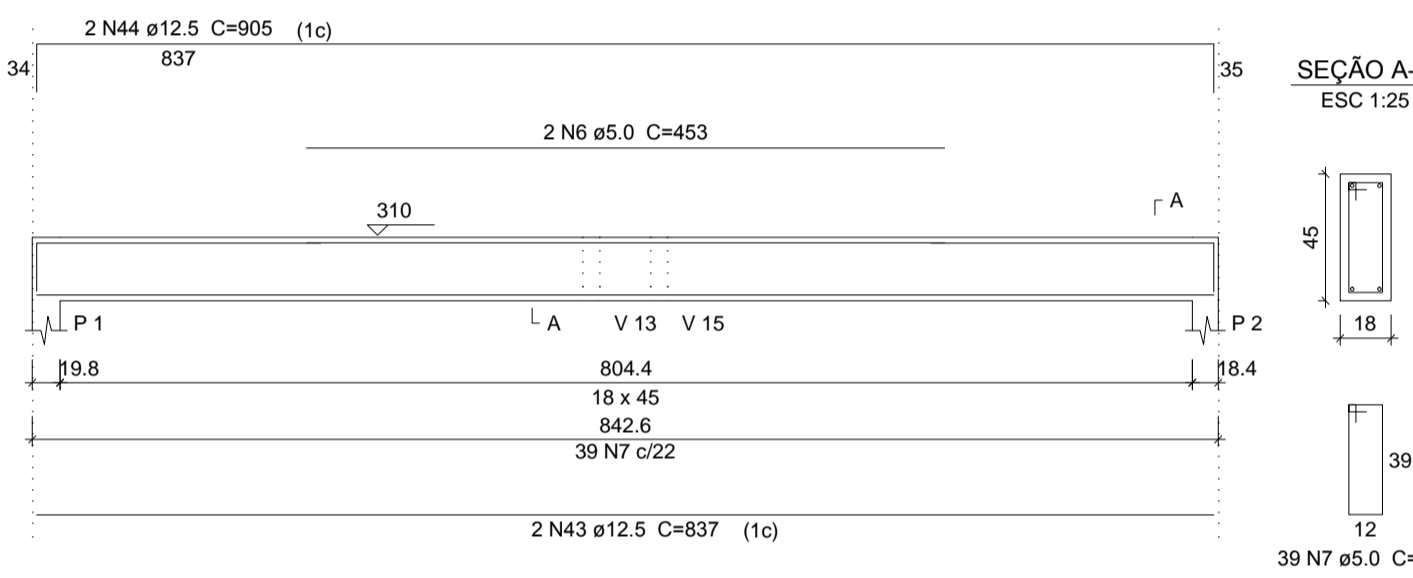
P 4=P 5=P 6=P 7

P 9=P 10=P 12=P 15=P 20=P 22=P 24=P 25

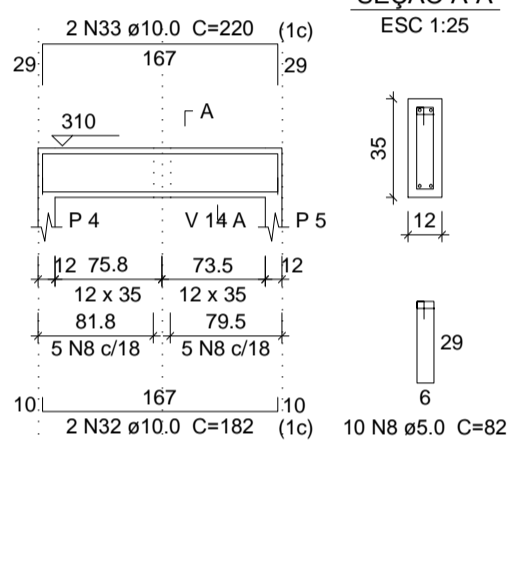
P 13=P 14=P 16=P 17=P 18=P 19=P 21=P 23



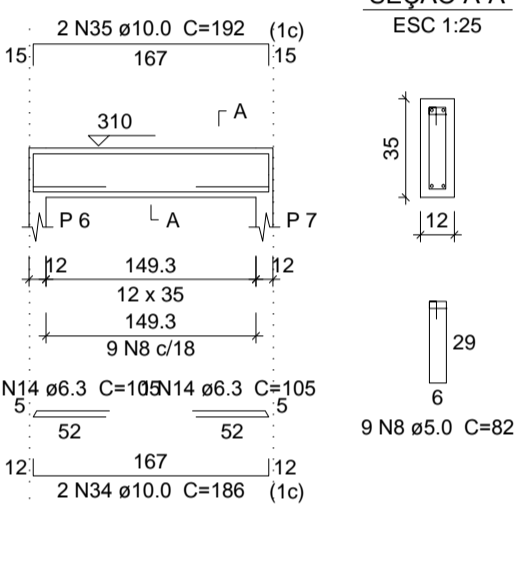
V 1  
ESC 1:50



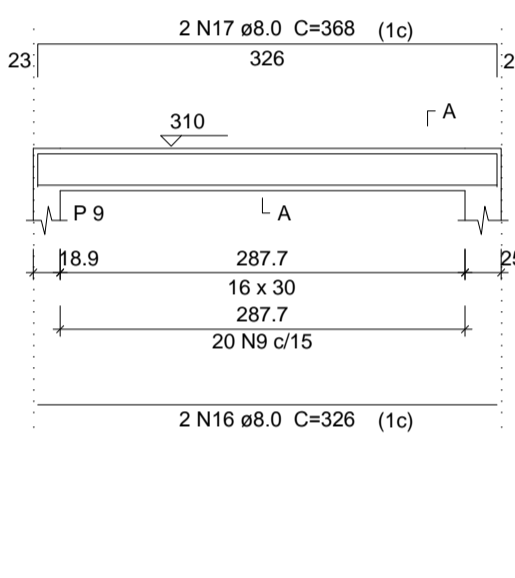
V 2  
ESC 1:50



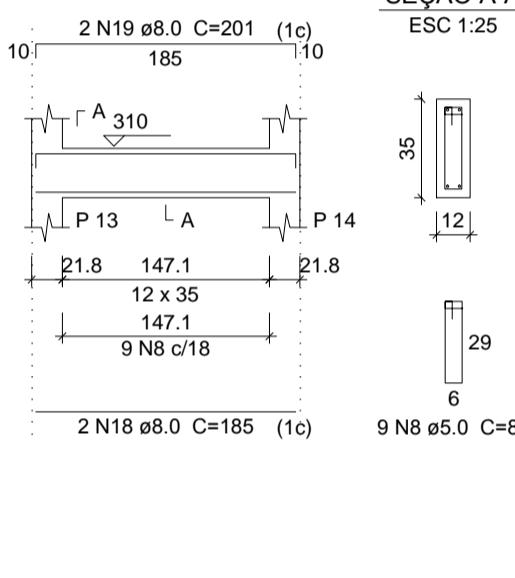
V 3  
ESC 1:50



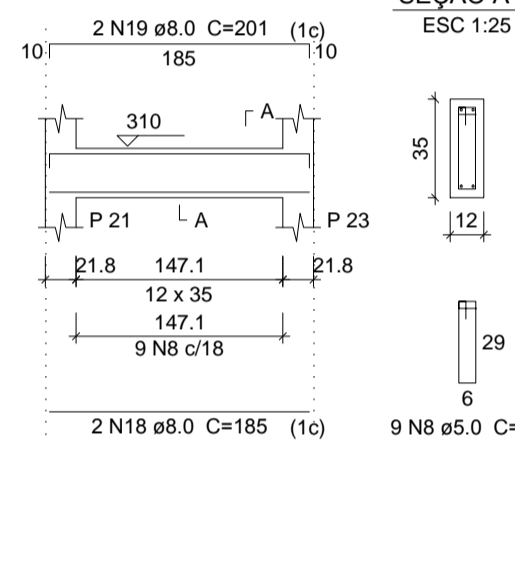
V 4  
ESC 1:50



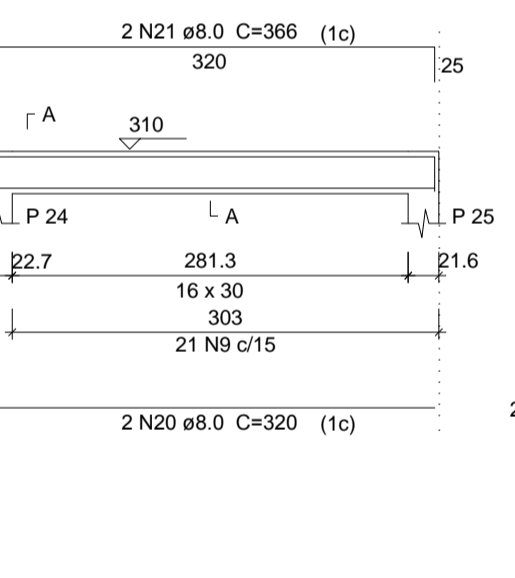
V 5  
ESC 1:50



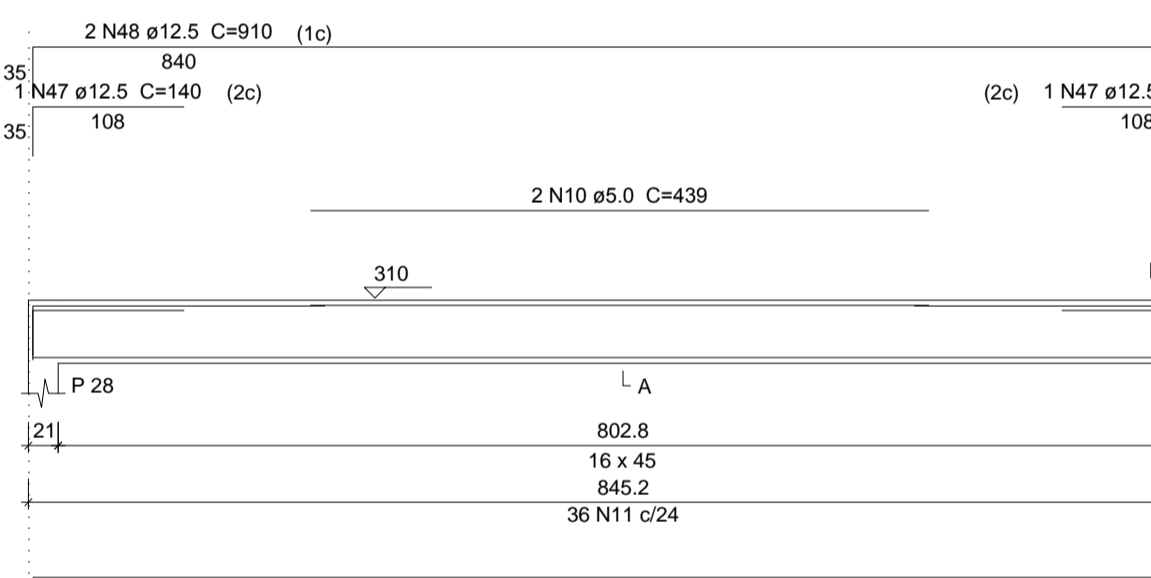
V 6  
ESC 1:50



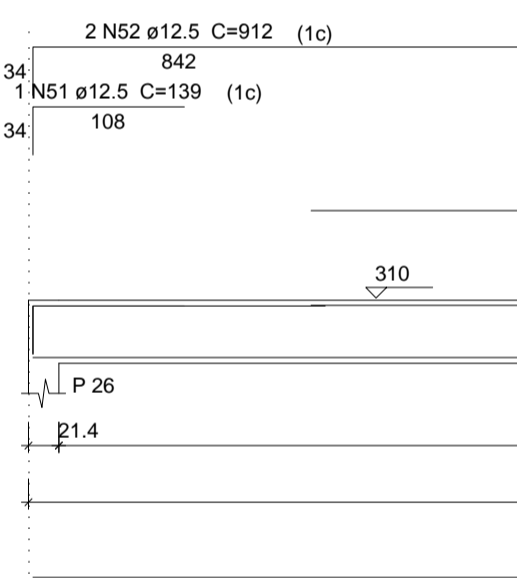
V 7  
ESC 1:50



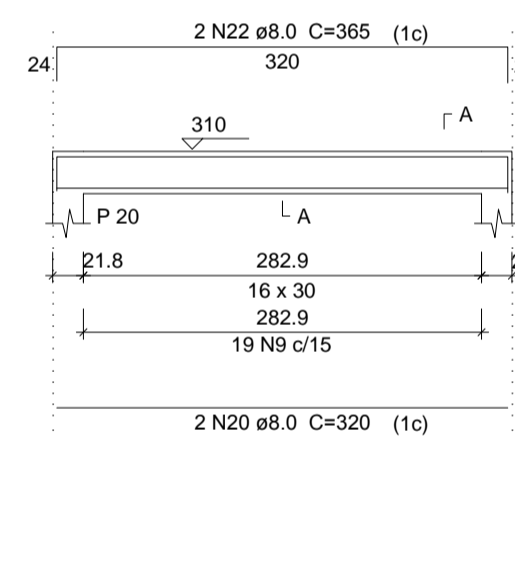
V 8  
ESC 1:50



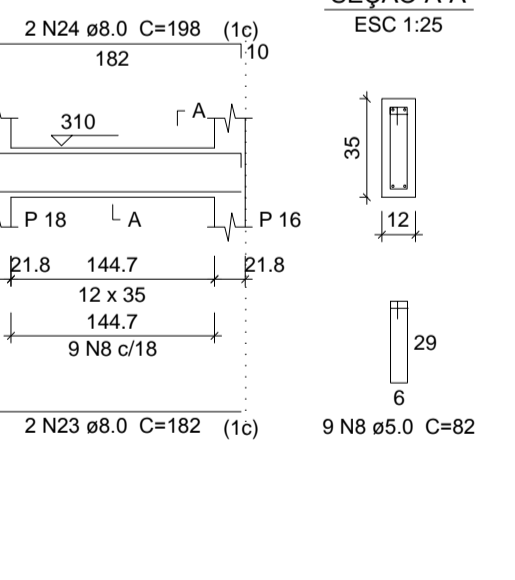
V 9  
ESC 1:50



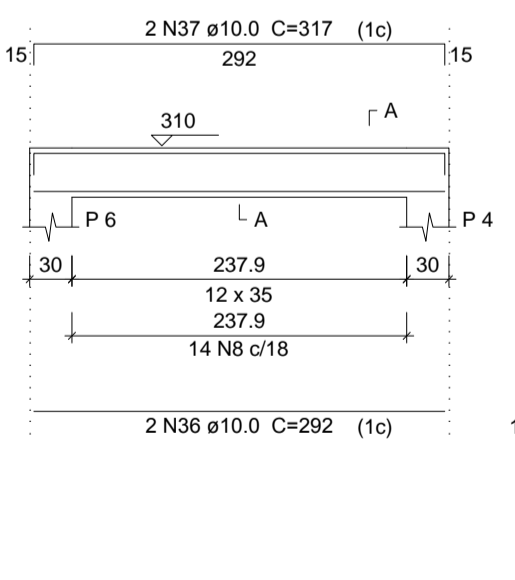
V 10  
ESC 1:50



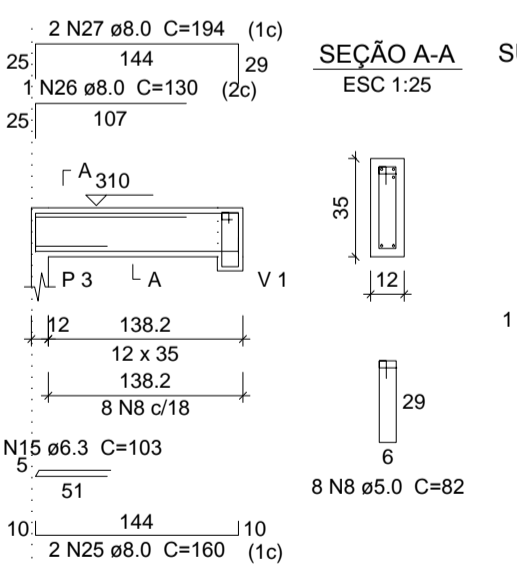
V 11  
ESC 1:50



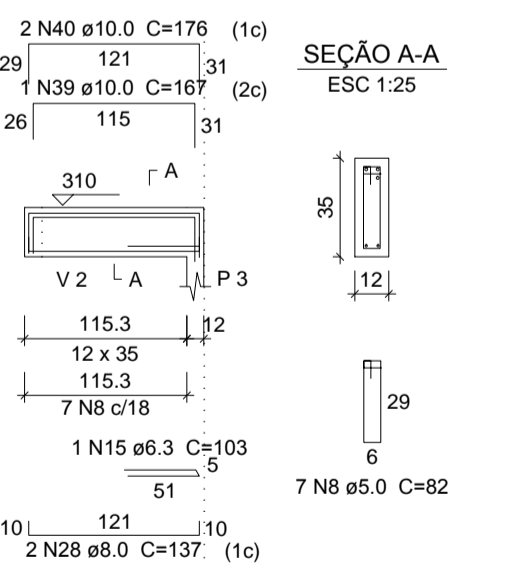
V 12  
ESC 1:50



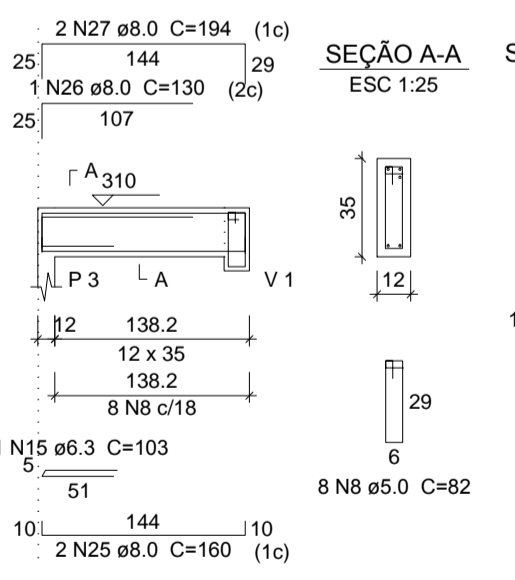
V 13  
ESC 1:50



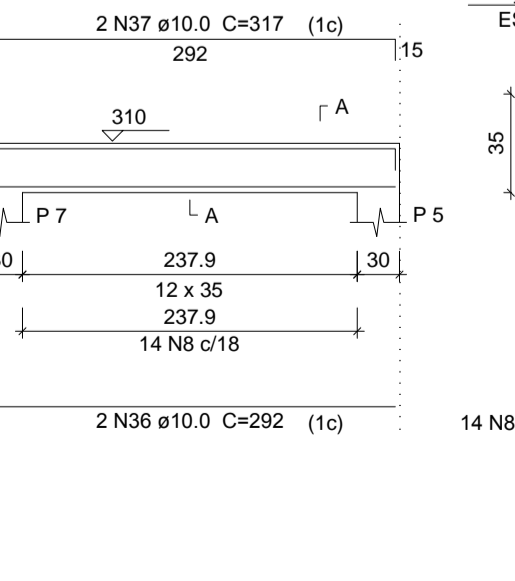
V 14  
ESC 1:50



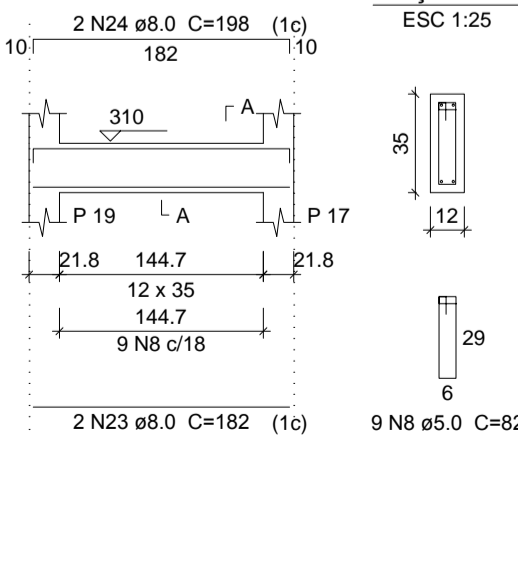
V 15  
ESC 1:50



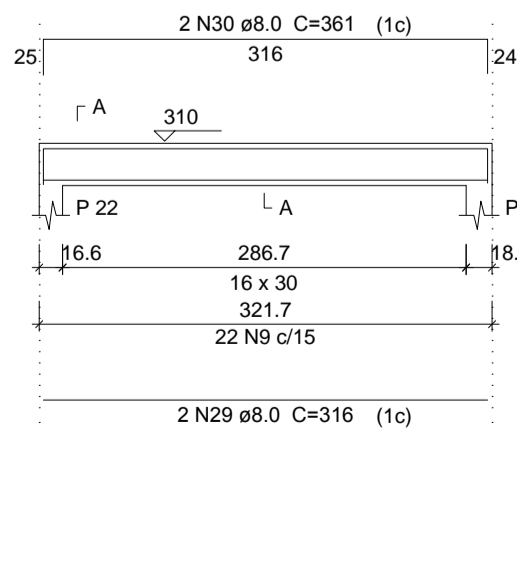
V 16  
ESC 1:50



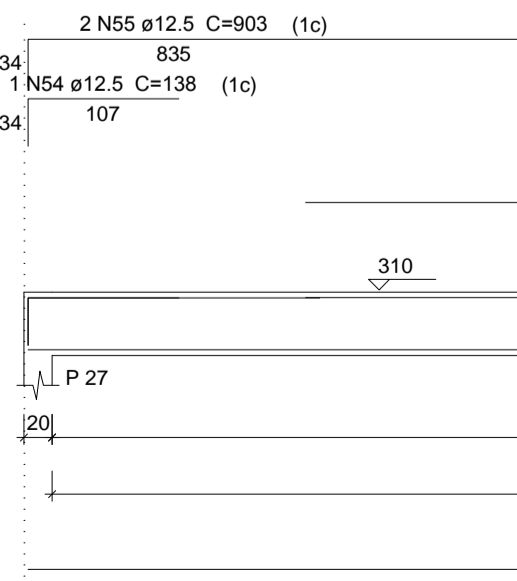
V 17  
ESC 1:50



V 18  
ESC 1:50



V 19  
ESC 1:50



**Relação do aço**

8xP 1	P 3	4xP 4
8xP 9	8xP 13	V 1
V 2	V 3	V 4
V 5	V 6	V 7
V 8	V 9	V 10
V 11	V 12	V 13
V 14	V 15	V 16
V 17	V 18	V 19

**Resumo do aço**

AÇO	DIAM	C.TOTAL (m)	PESO + 10 % (kg)
CA50	6.3	5.2	1.4
	8.0	105	45.6
	10.0	96.6	65.5
	12.5	645.5	684
CA60	5.0	834	141.4
<b>PESO TOTAL</b>			
CA50		796.4	
CA60		141.4	

Vol. de concreto total (C-25) = 7.74 m³  
Área de forma total = 137.38 m²

**P1 ENGENHARIA**

---

**PARANAITA**

---

CASA DA CULTURA E MEMÓRIA

---

**COMPANHIA HIDRELÉTRICA TELES PIRES (CHTP)**

---

Engenheiro Civil

**VERIDIANE DAL BEM**  
ENG CIVIL CREA RN 1213611965

---

**ESTRUTURAL**

---

FOLHA Nº **07/09**