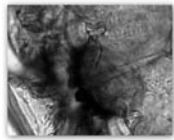


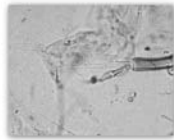
Apêndice 1 - Pranchas

PRANCHA BENTOS

Bentos



Beardius sp



Beardius sp



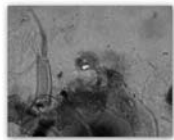
Stenochironomus sp



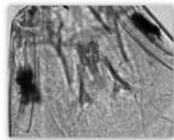
Stenochironomus sp



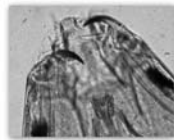
Beardius sp



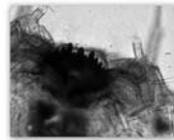
Beardius sp



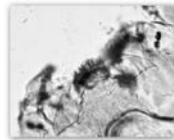
Coelotanypus sp



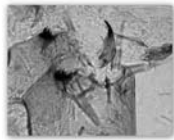
Coelotanypus sp



Chironomus sp



Polypedilum sp



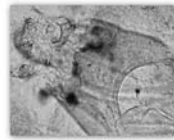
Cryptochironomus sp



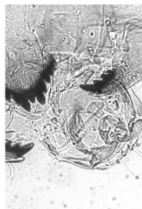
Chironomus sp



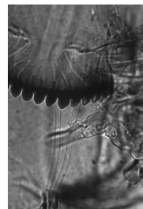
Cryptochironomus sp



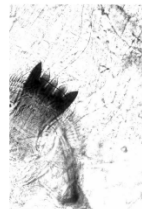
Harnischia sp



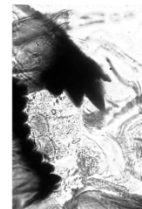
Goeldichironomus sp



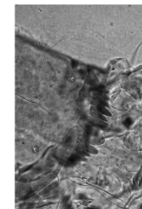
Asheum sp



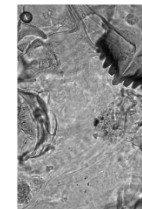
Pentaneura sp



Stenochironomus sp



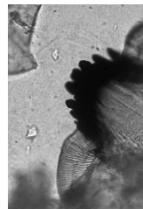
Aedokritus sp



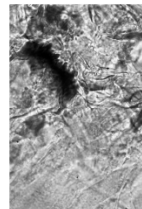
Kiefferulus sp



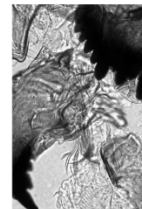
Coryneura sp



Dicotendipes sp



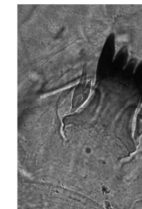
Aedokritus sp



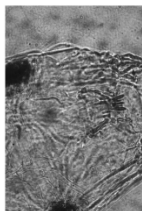
Kiefferulus sp



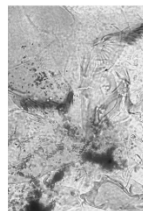
Coelotanypus sp



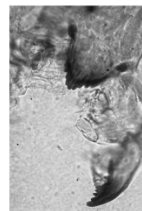
Pentaneura sp



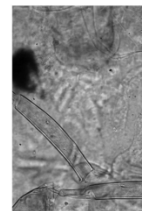
Labrundinia sp



Parachironomus sp



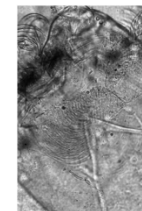
Thienemanniella sp



Tanytarsini sp

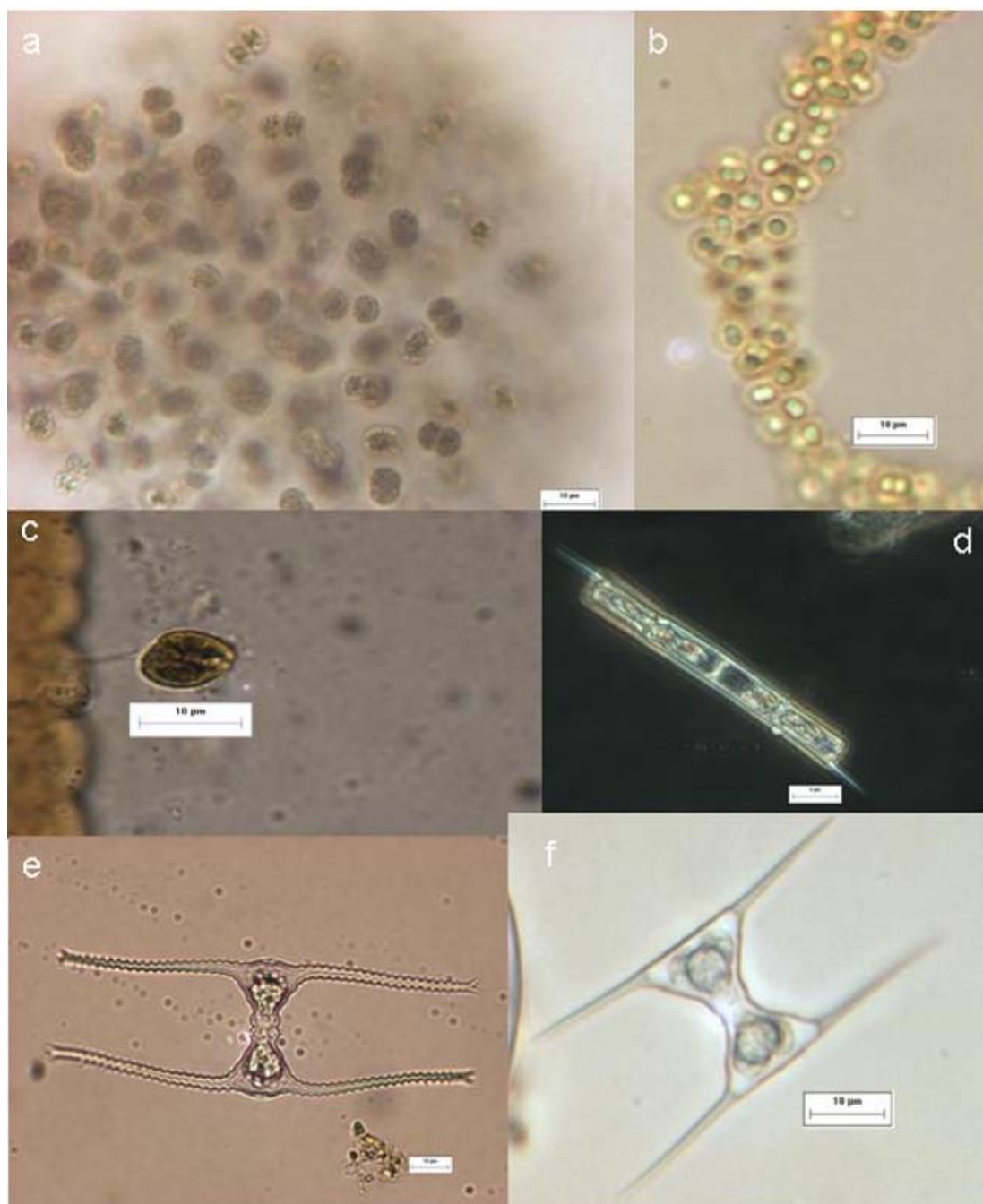


Lopescladius sp

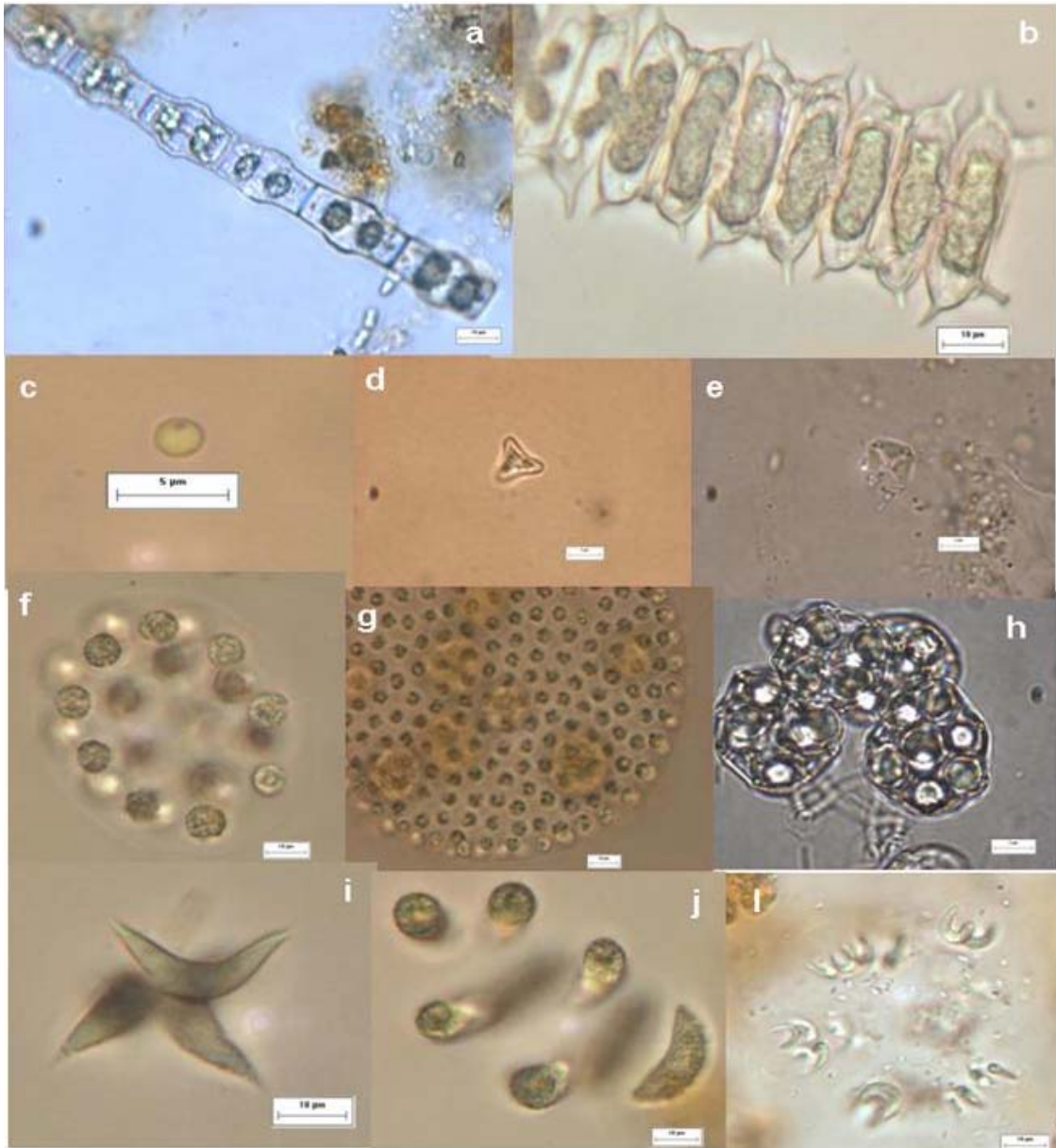


Antenathienemanniell

PRANCHA FITOPLÂNCTON



Prancha I: Cianobactérias - a) *Microcystis aeruginosa*; b) *Cyanodictyon* sp.; Criptofíceas – c) *Cryptomonas* cf. *brasiliensis*; Diatomáceas – d) *Aulacoseira granulata*; Zignematofíceas – e) *Staurastrum leptocladum*; f) *Staurodesmus triangularis*.



Prancha II: Zignematoficeas - a) *Bambusina* sp.; b) *Spondylosium* sp.; Cloroficeas - c) *Chlorella homosphaera*; Xantoficea - d) *Goniochloris mutica*; Cloroficeas - e) *Pediatrum privum*; f) *Eudorina elegans*; g) *Volvox* sp.; h) *Coelastrum reticulatum*; i) *Dimorphococcus lunatus*; j) *Nephrocytium agardhianum*; l) *Kirchneriella lunaris*.



Prancha III: Euglenoficeas – a) *Lepocinlis* sp.; b) *Lepocinlis* cf. *acus*; c) *Phacus longicauda*; d) *Trachelomonas* cf. *acanthophora*; e) *Trachelomonas* cf. *spirogyra*; f) *Trachelomonas armata*; g e h) *Trachelomonas hispida*; i) *Trachelomonas* cf. *cervicula*.

PRANCHA MACROFITAS

Macrófitas



Imagens da seca - Águas Baixas 2010



Perda de profundidade bem acentuada



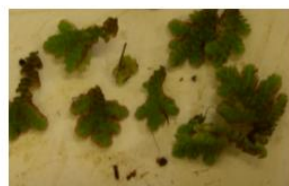
Salvinia minima



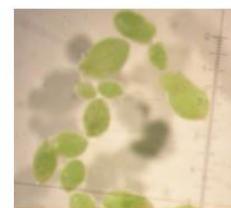
Ceratopteris pteridoides



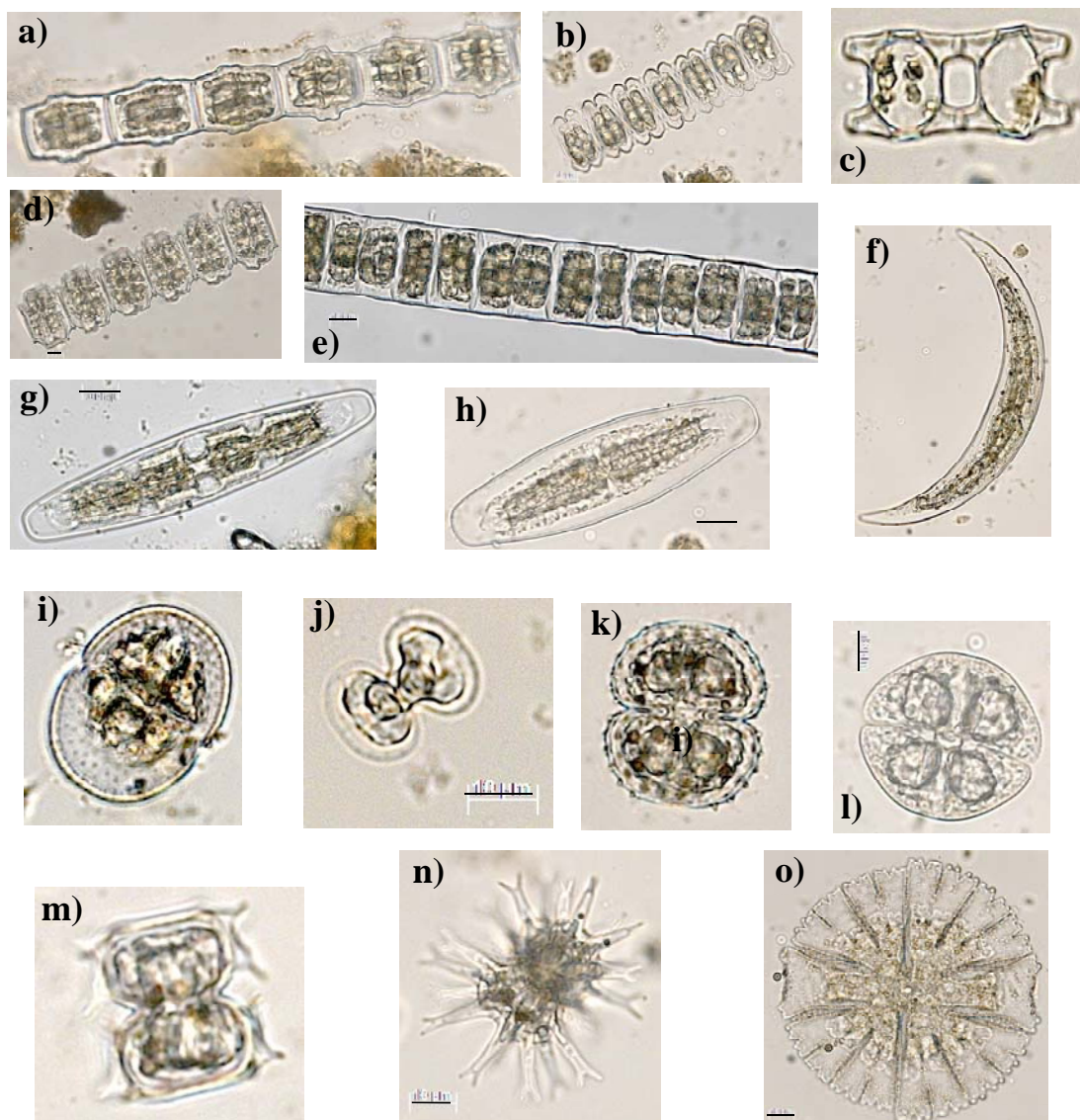
Utricularia sp



Azolla filiculoides



Lemna minor

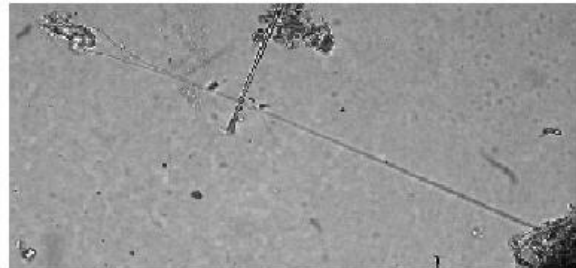
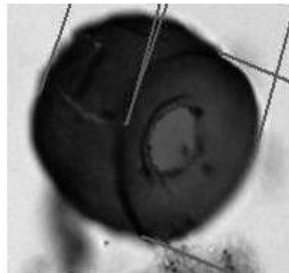
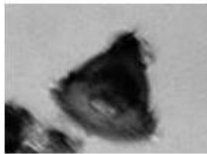
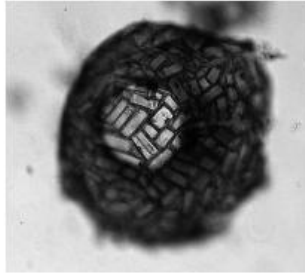
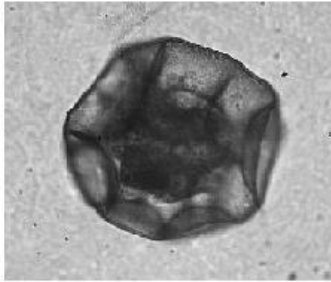


Prancha 2: Zygnemathoficeas: a) *Bambusina brebissonii* var. *brebissonii*; b) *Desmidium swartzii*; c) *Desmidium baileyi* var. *baileyi*; d) *Desmidium grevillii* var. *grevillii*; e) *Hyalotheca dissiliens* var. *dissiliens*; f) *Closterium moniliferum* cf. *concavum*; g) *Closterium libellula* var. *interruptum*; h) *Netrium digitus*; i) *Actinotaenium wollei* var. *wollei*; j) *Cosmarium asphaerosporum* var. *strigosum*; k) *Cosmarium* cf. *praemorsum*; l) *Cosmarium candianum*; m) *Staurastrum quadrangulare*; n) *Staurastrum leptacanthum* e o) *Micrasterias thomasiana*.

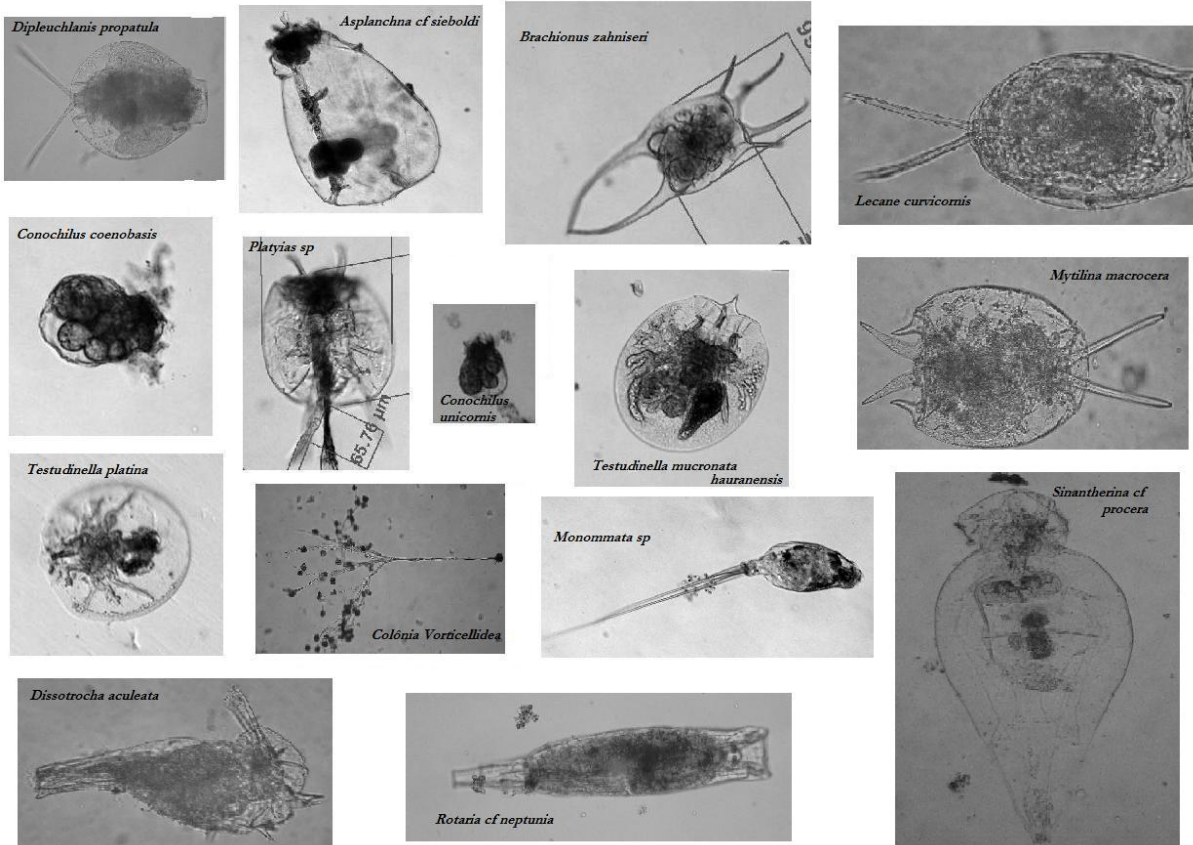
PRANCHA ZOOPLÂNCTON

Protozoários

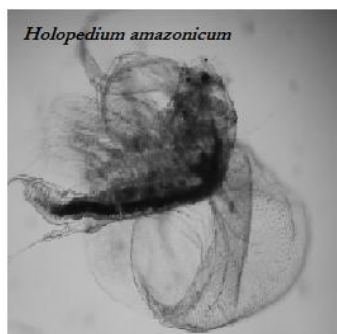
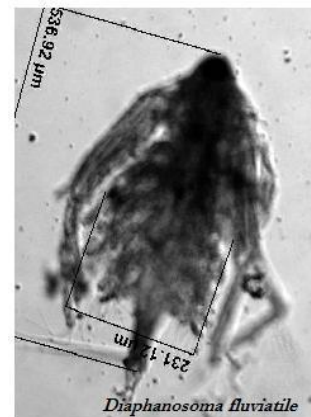
Diferentes espécies de *Arcella* sp



Rotíferos

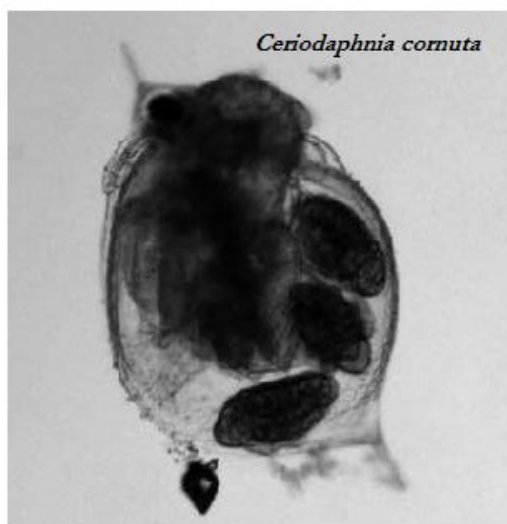


Cladóceros
Família Sididae

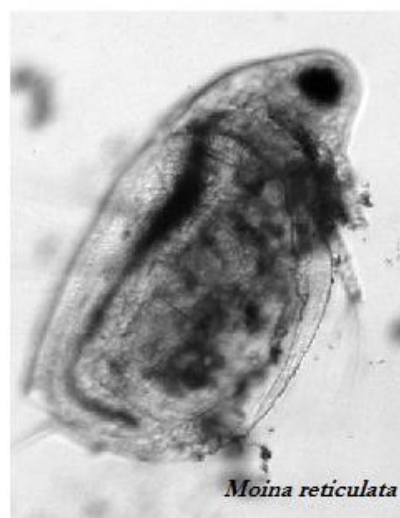
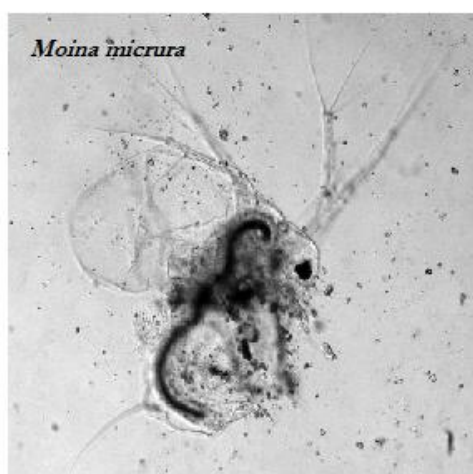


Cladóceros

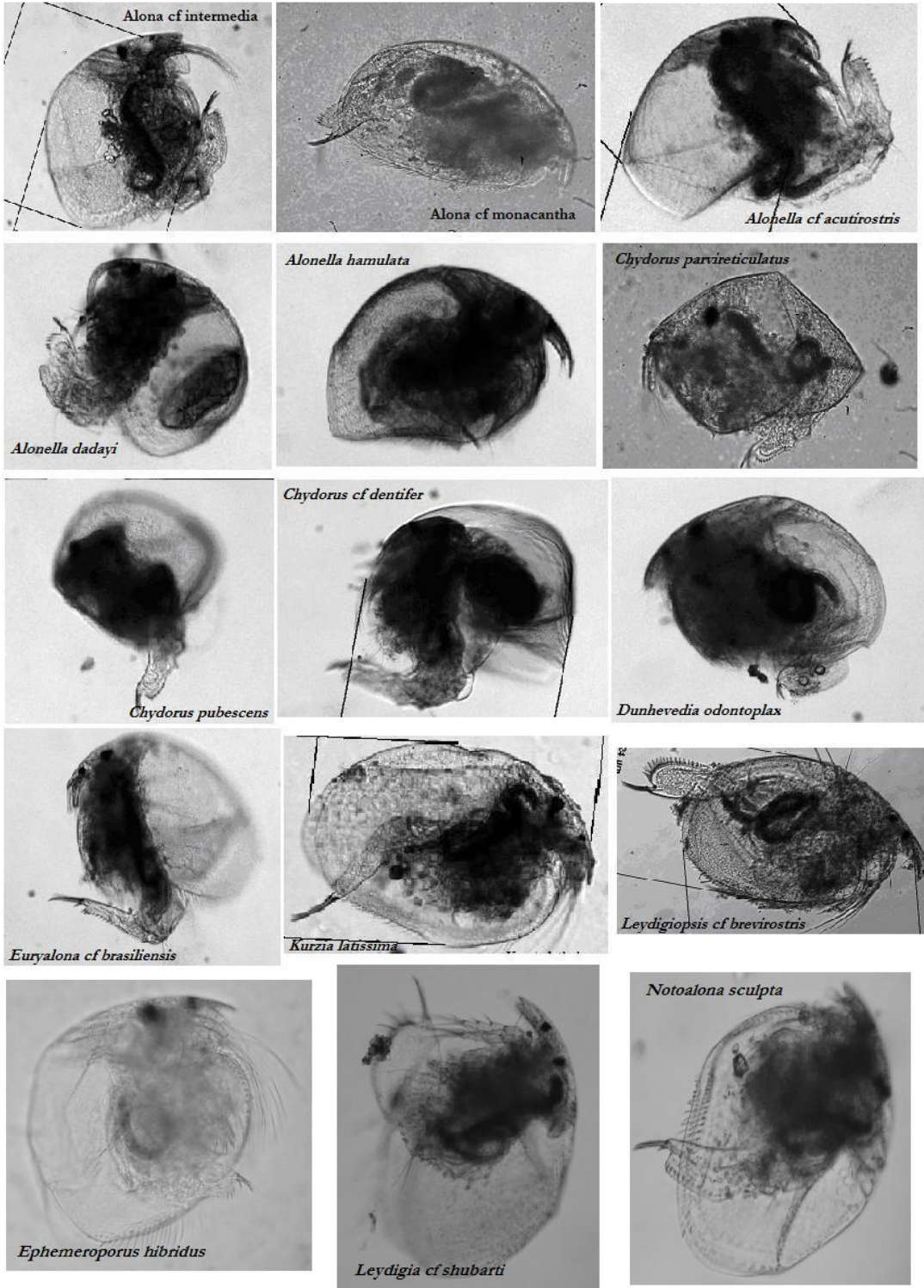
Família Daphnidae



Família Moinidae

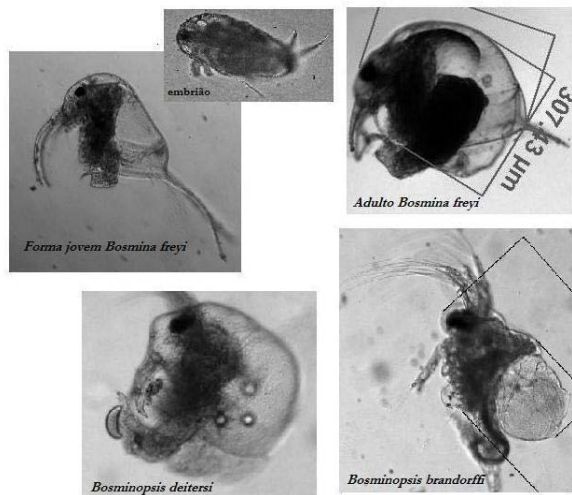


Cladóceros Família Chydoridae

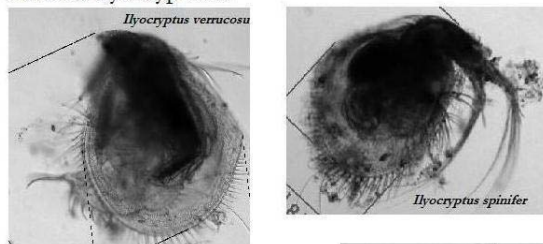


Cladóceros

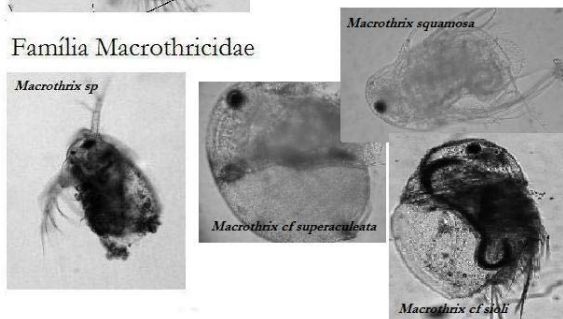
Família Bosminidae



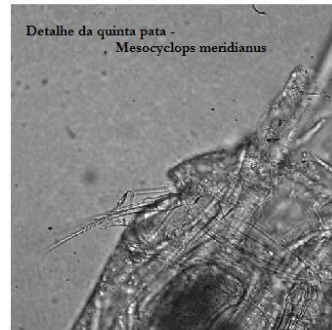
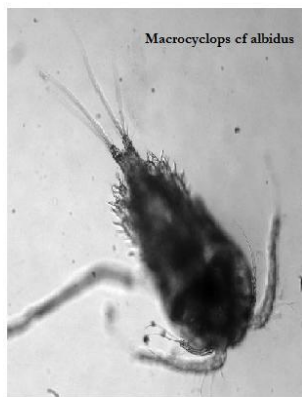
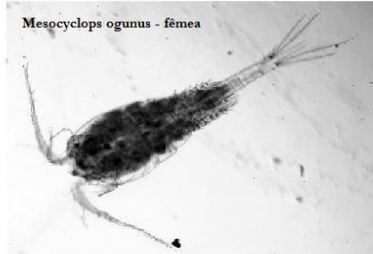
Família Ilyocryptidae



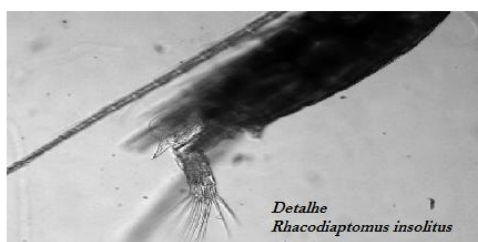
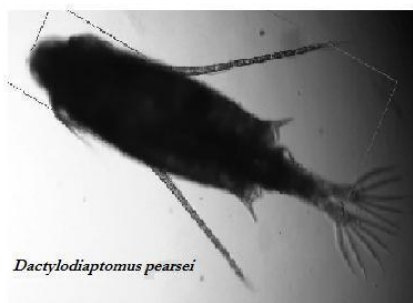
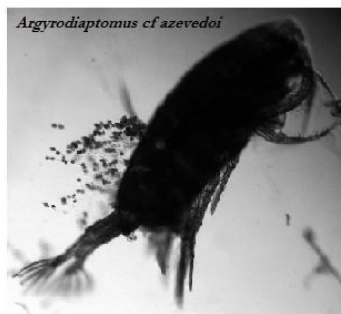
Família Macrothricidae



Copepoda Cyclopoida

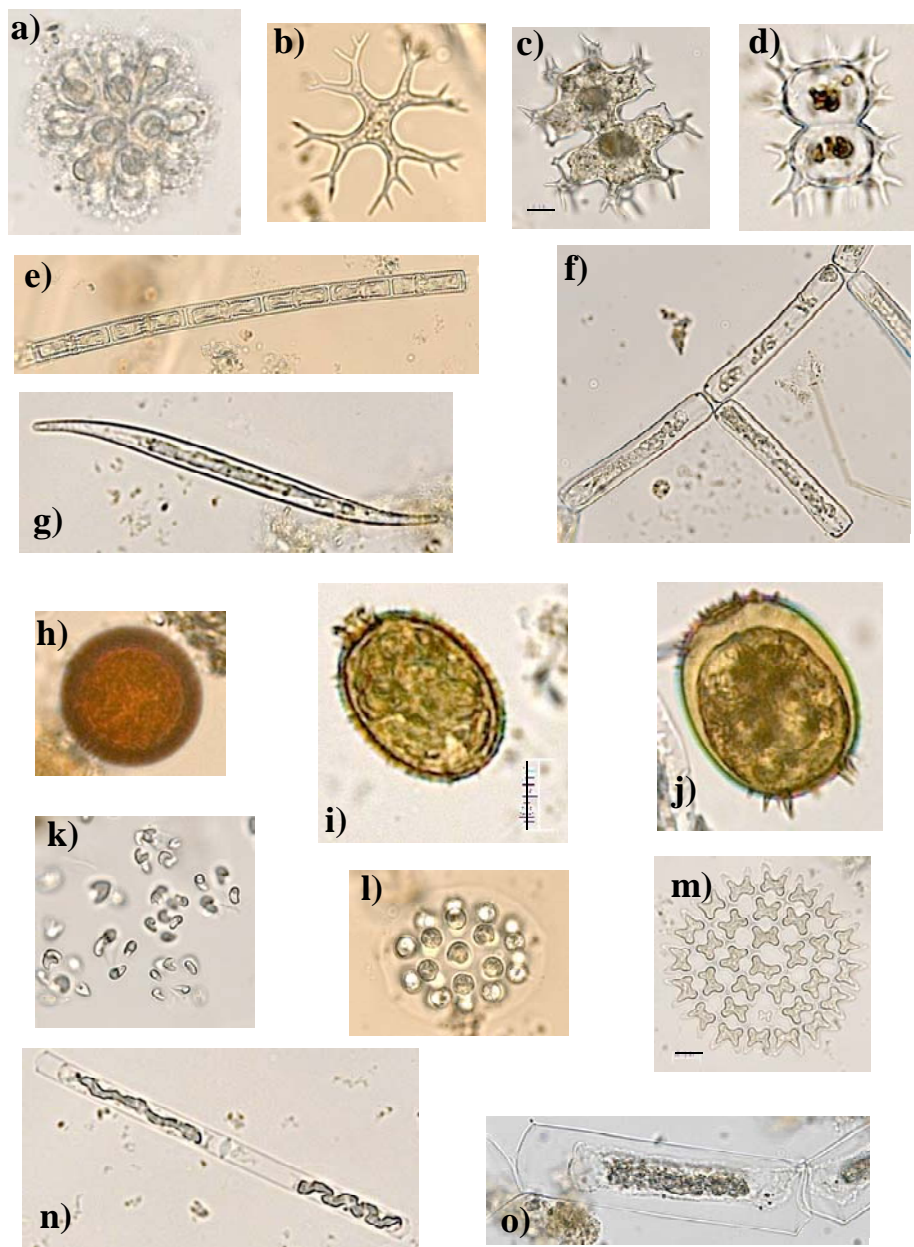


Copepoda Calanoida



Outros Grupos





Prancha 1: Chrysofíceas: a) *Synura uvella*; **Xanthofíceas:** b) *Istmochlorum* sp.; c) *Xanthidium trilobum*; d) *Xanthidium regulare*; e) *Aulacoseria granulata*; f) *Tabellaria* sp.1; g) *Nitzschia hantzschii*; **Euglenóides:** h) *Trachelomonas cervicula*; i) *Trachelomonas hispida*; j) *Trachelomonas armata*; **Clorofíceas:** k) *Kirchneriella* cf. *microscopica*; l) *Eudorina elegans*; m) *Pediastrum duplex*; n) *Mougeotia* sp. 1 e o) *Mougeotia* sp. 2