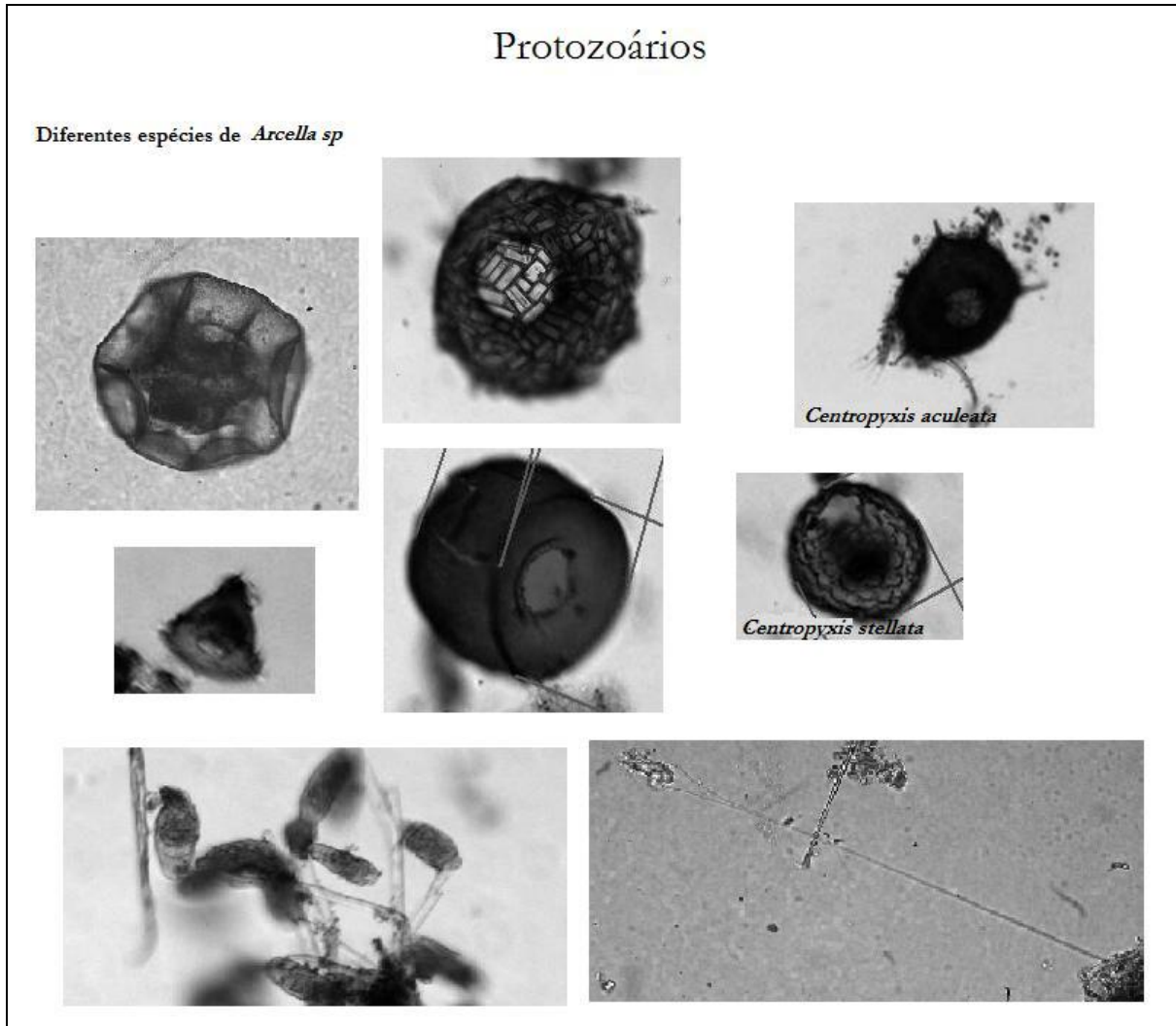
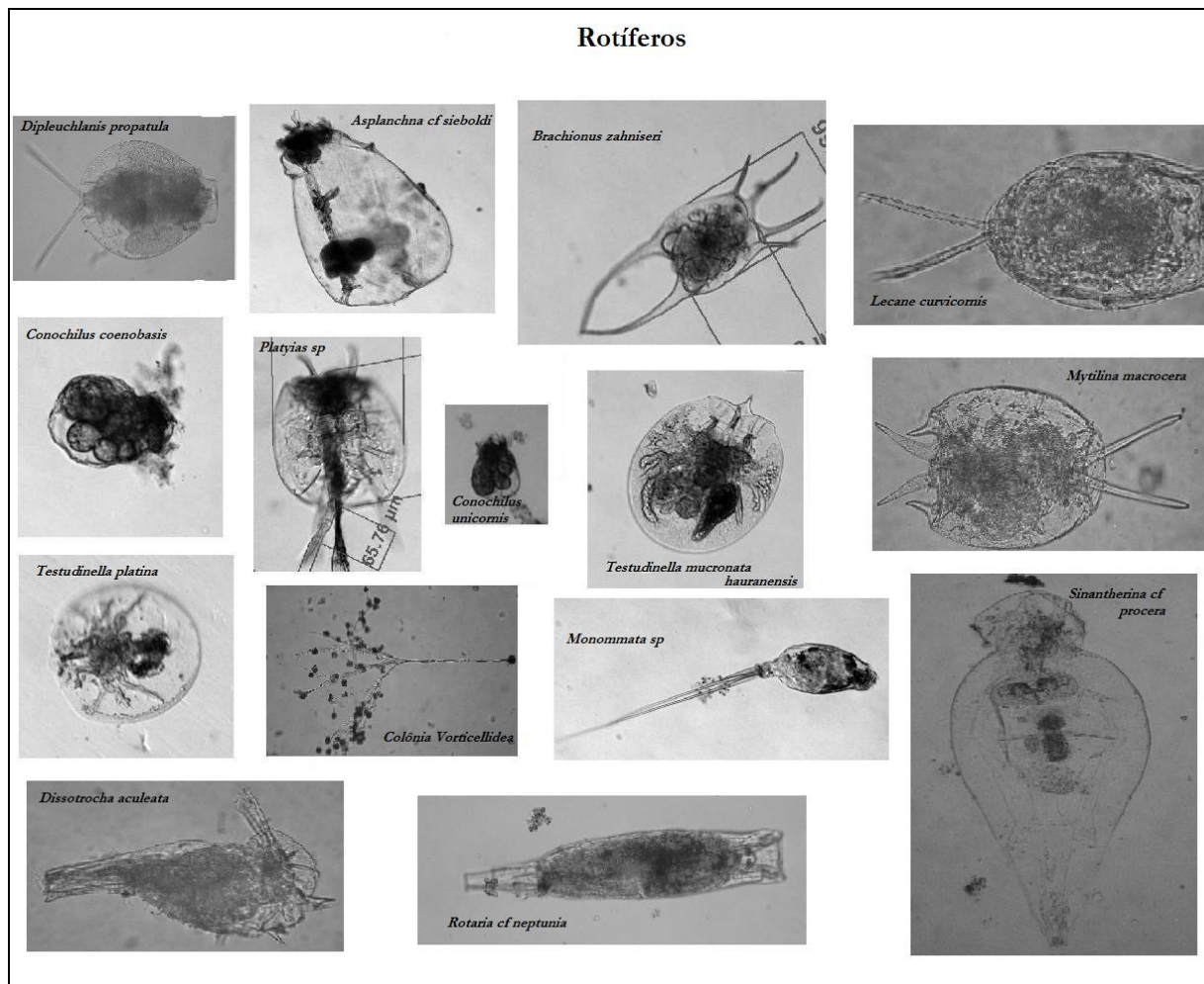
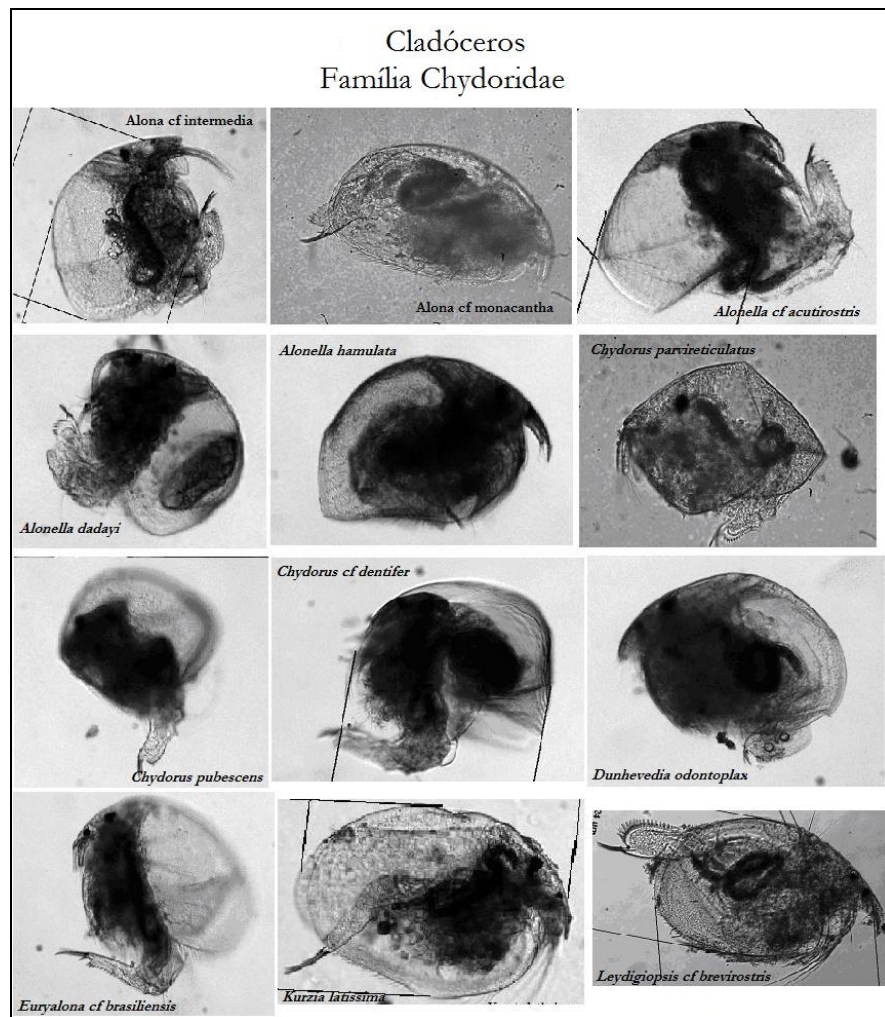


Pranchas com fotos ilustrativas das espécies e/ou de detalhes morfológicos relevantes para a identificação taxonômica das espécies zooplanctônicas.

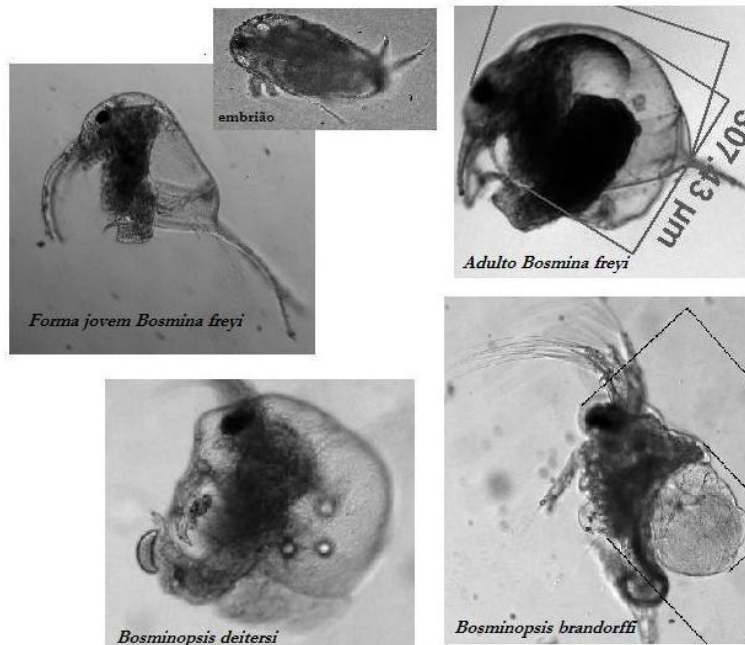




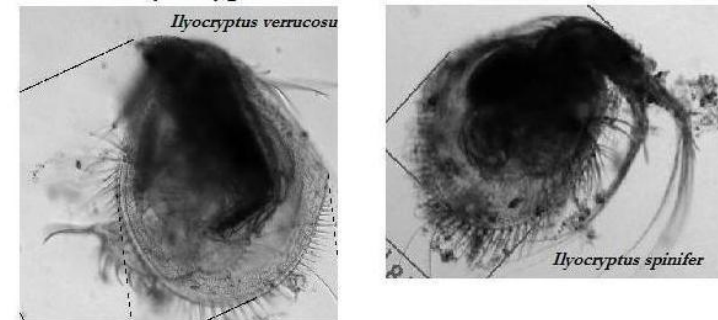


## Cladóceros

### Família Bosminidae



### Família Ilyocryptidae

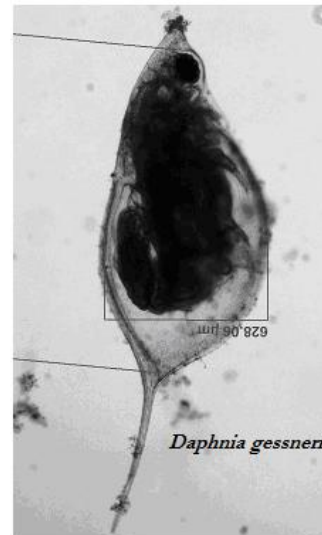
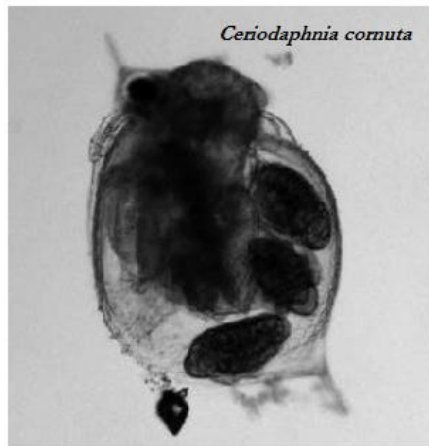


### Família Macrothricidae

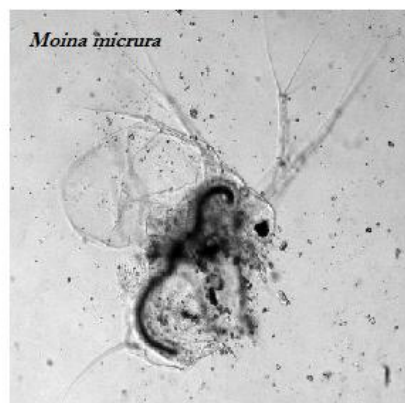


## Cladóceros

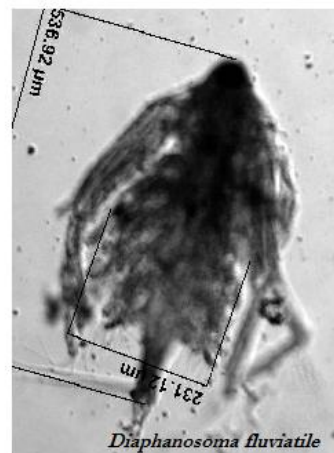
### Família Daphnidae

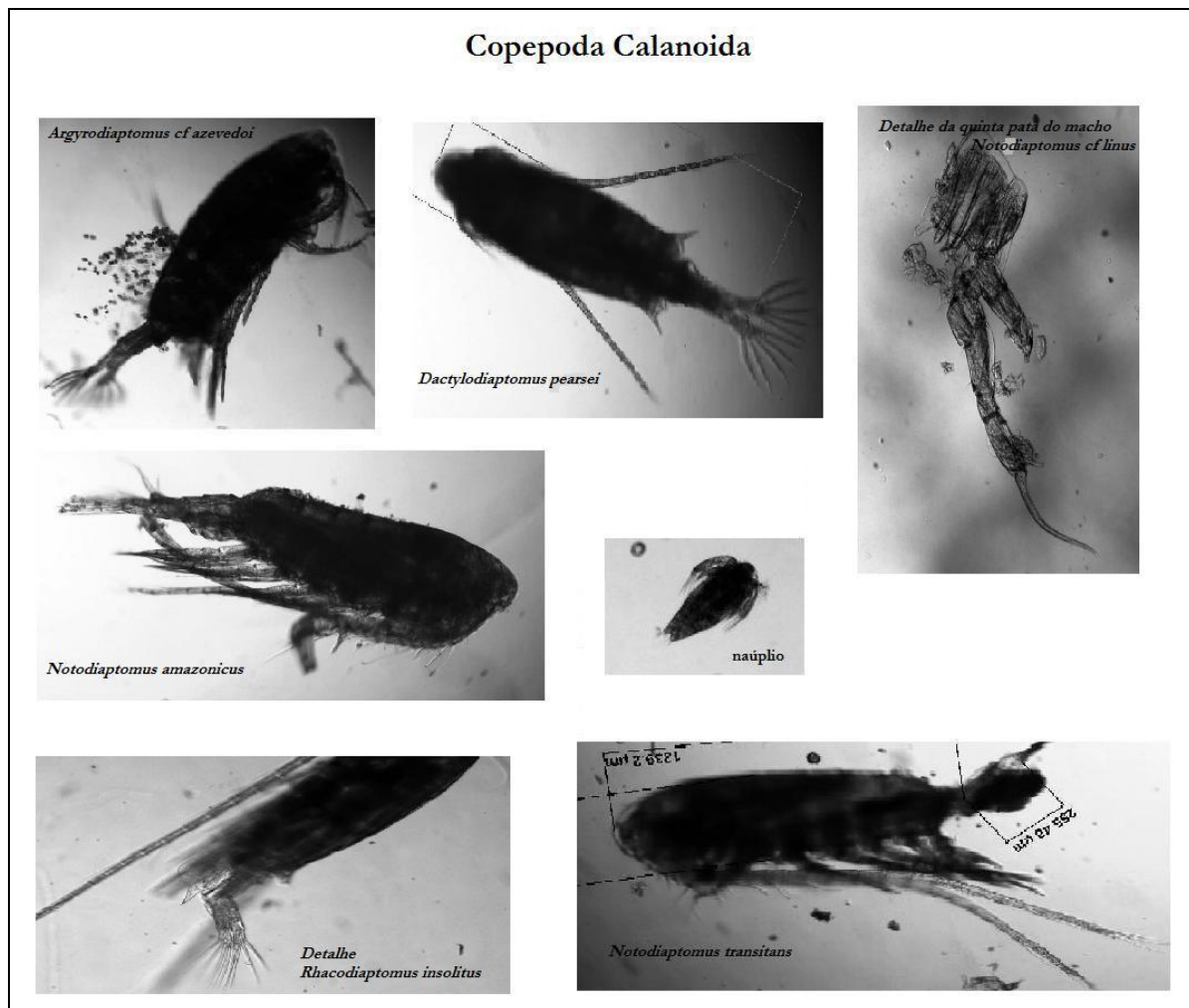


### Família Moinidae

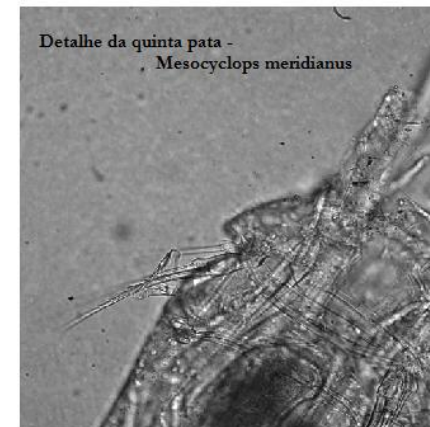
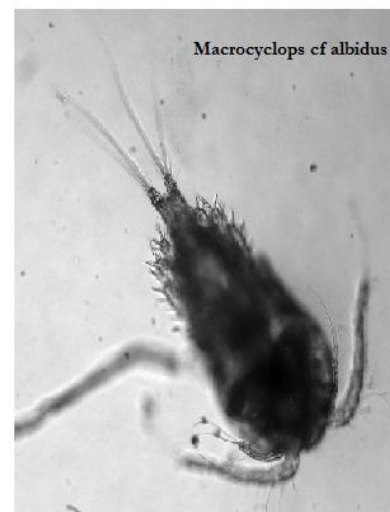
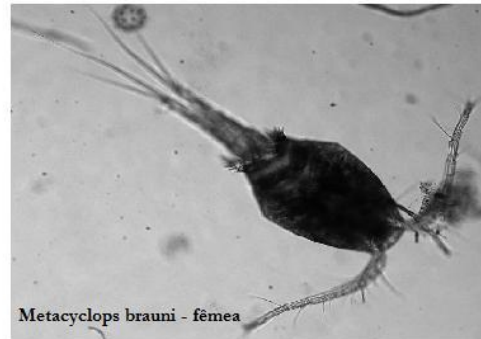
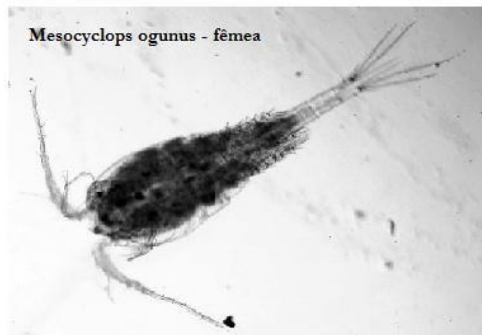


## Cladóceros Família Sididae





## Copepoda Cyclopoida

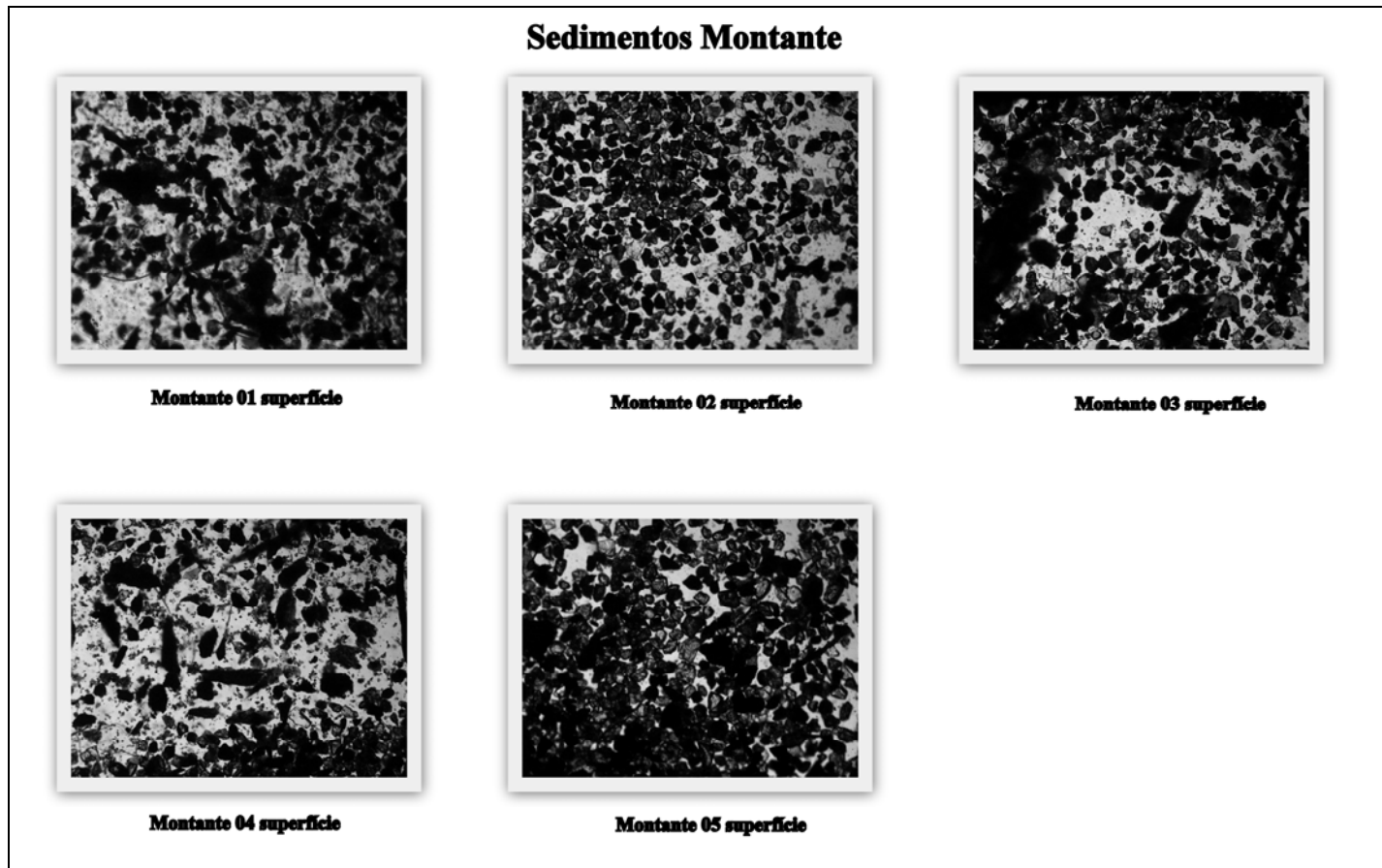




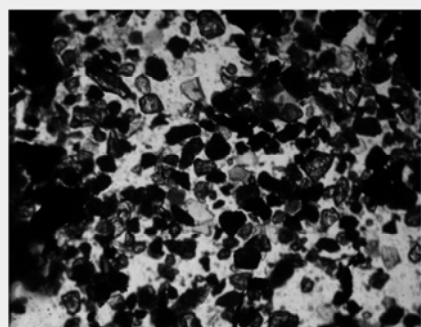
## Outros Grupos



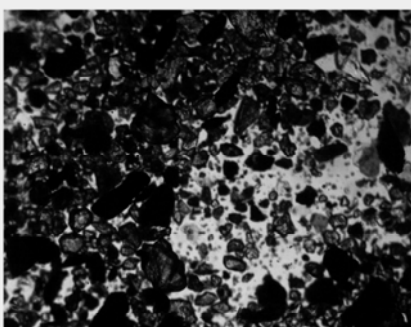
Pranchas com fotografias ilustrativas da natureza do material suspenso (seston) nas amostras de zooplâncton dos diferentes pontos amostrados. Destaque para a fração predominantemente mineral na maior parte dos pontos amostrados no rio Madeira.



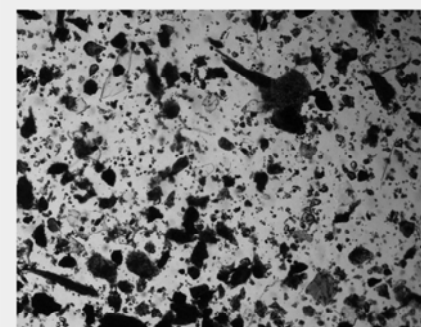
### Sedimentos Jusante



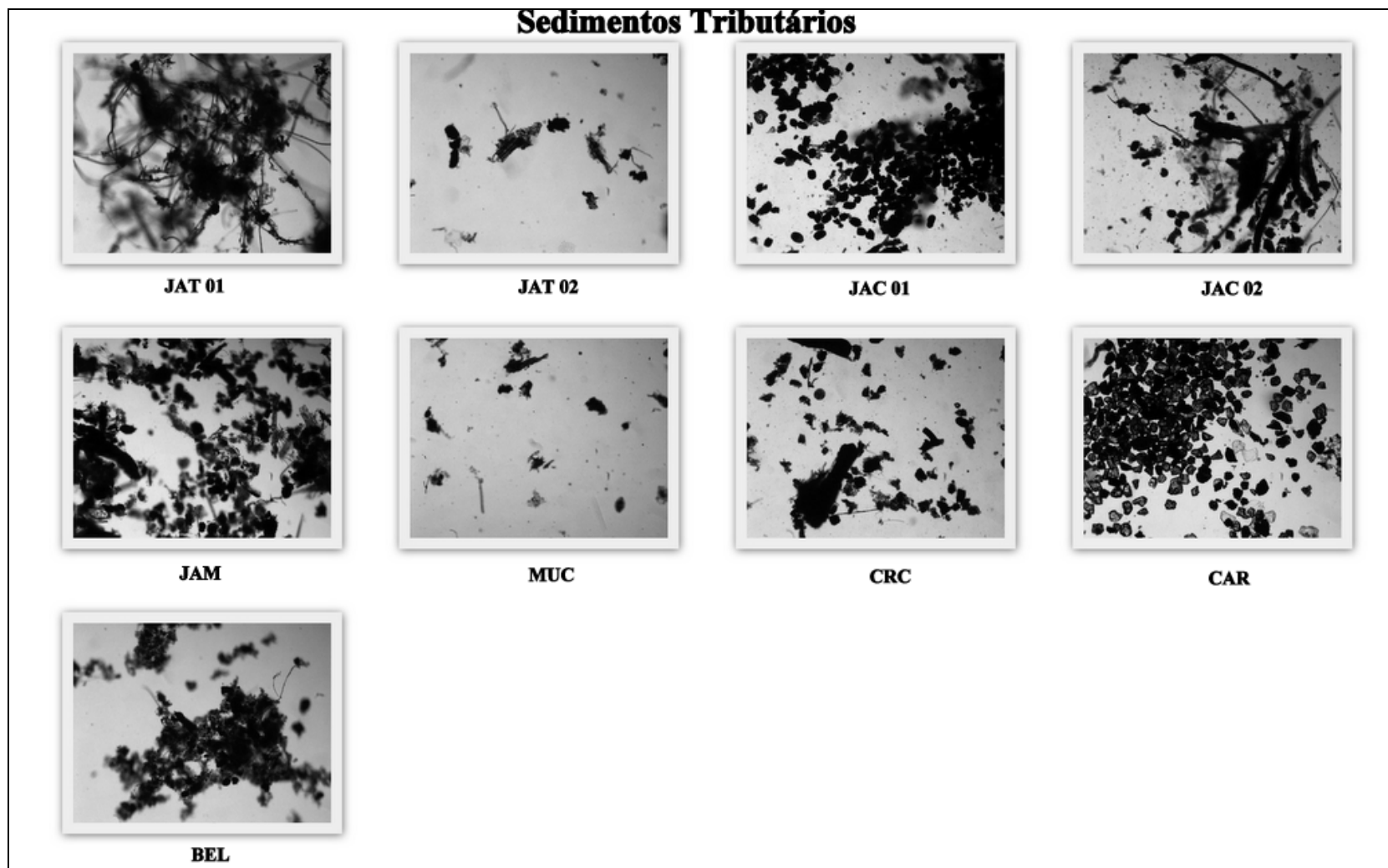
**Jusante 01 superfície**



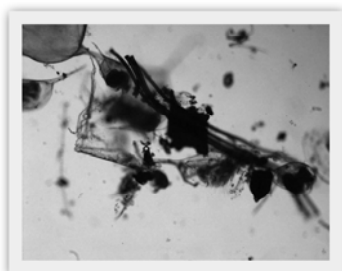
**Jusante 02 superfície**



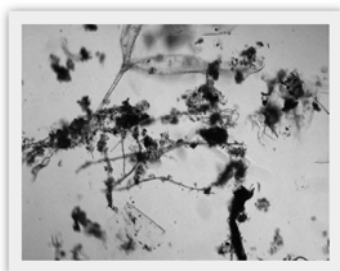
**Jusante 03 superfície**



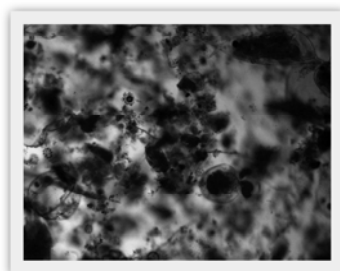
### Sedimentos Lago Cuniã



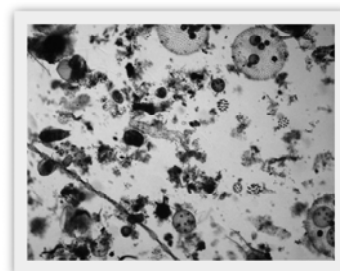
LC 01 superficial



LC 01 meio



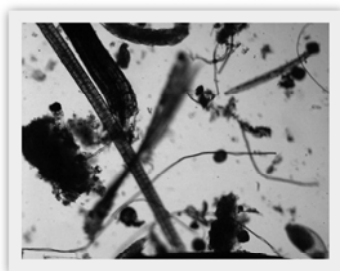
LC 02 superficial



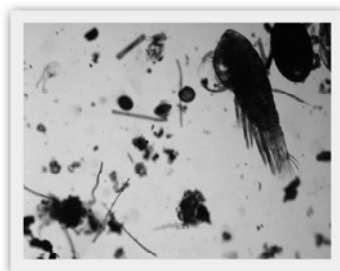
LC 02 meio



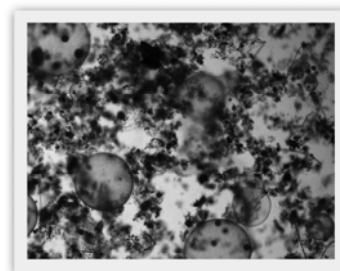
LC 02 fundo



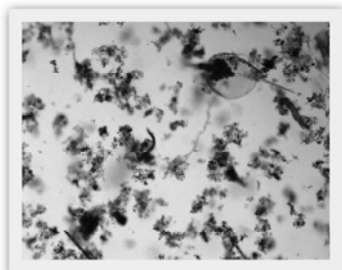
LC 03 superficial



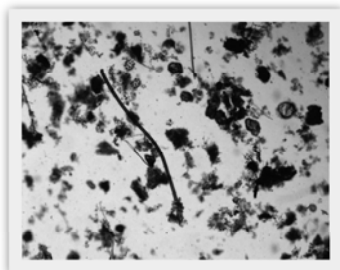
LC 03 meio



CC 01 superficial



CC 02 superficial



LJ 02 superficial

Pranchas com fotos ilustrativas dos detalhes morfológicos relevantes para a identificação taxonômica das espécies bentônicas

