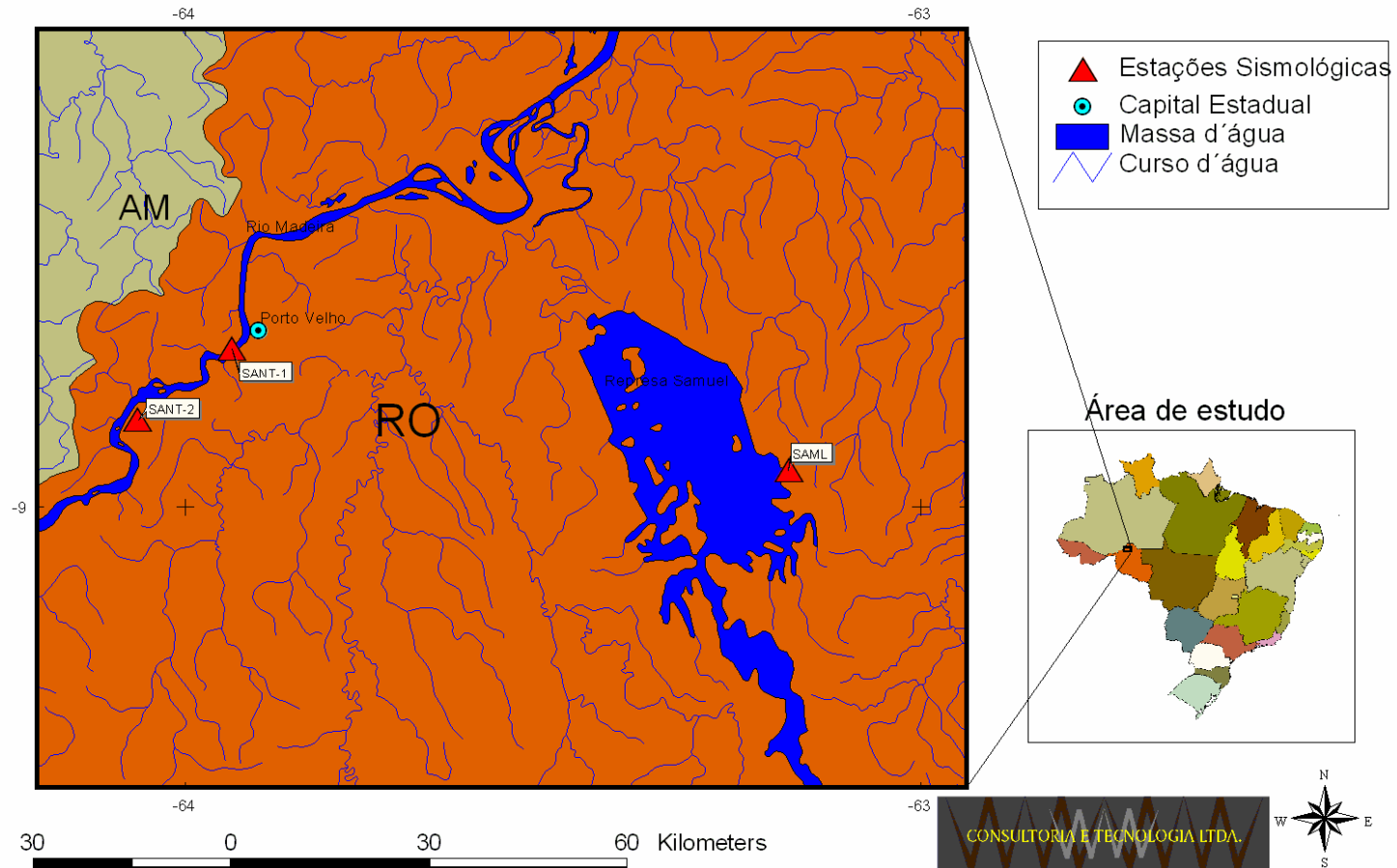
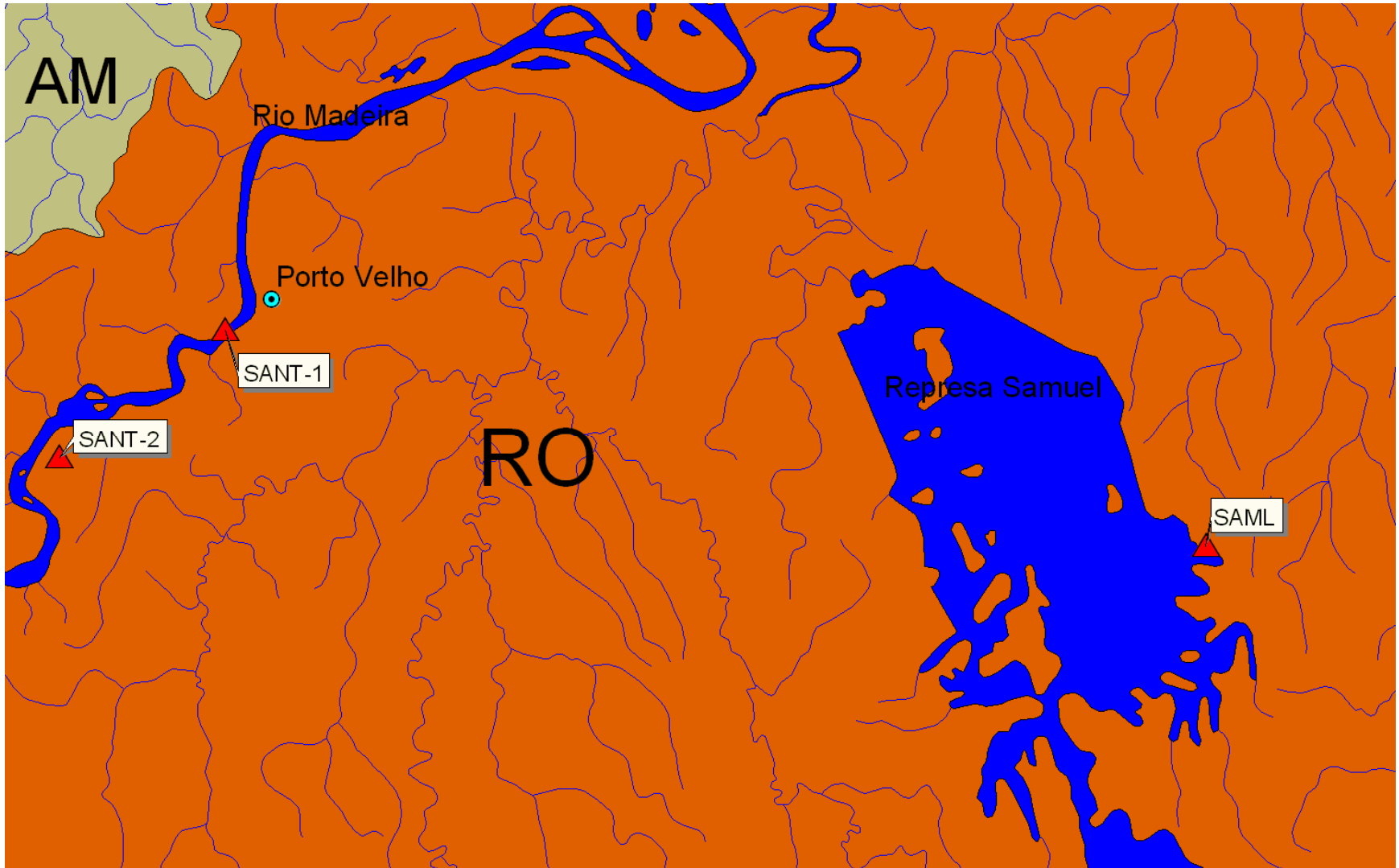


# **Imagens e Mapas**

# Estações Sismológicas





# Estações Sismológicas

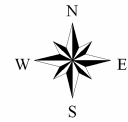
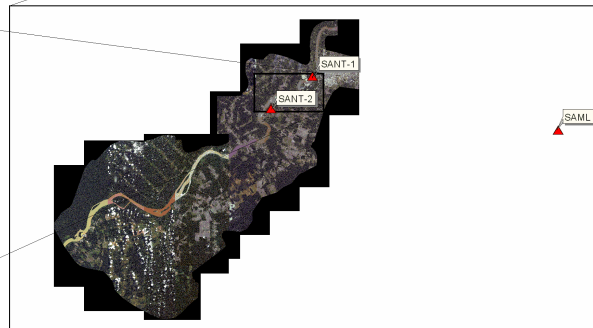
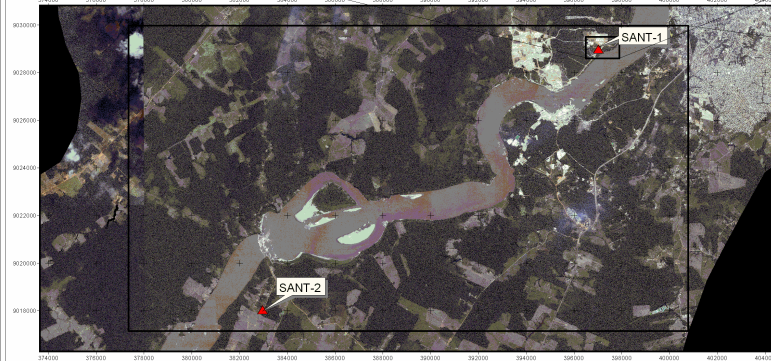
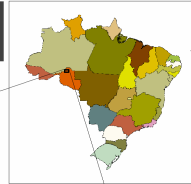


▲ Estações Sismológicas  
□ Área 1

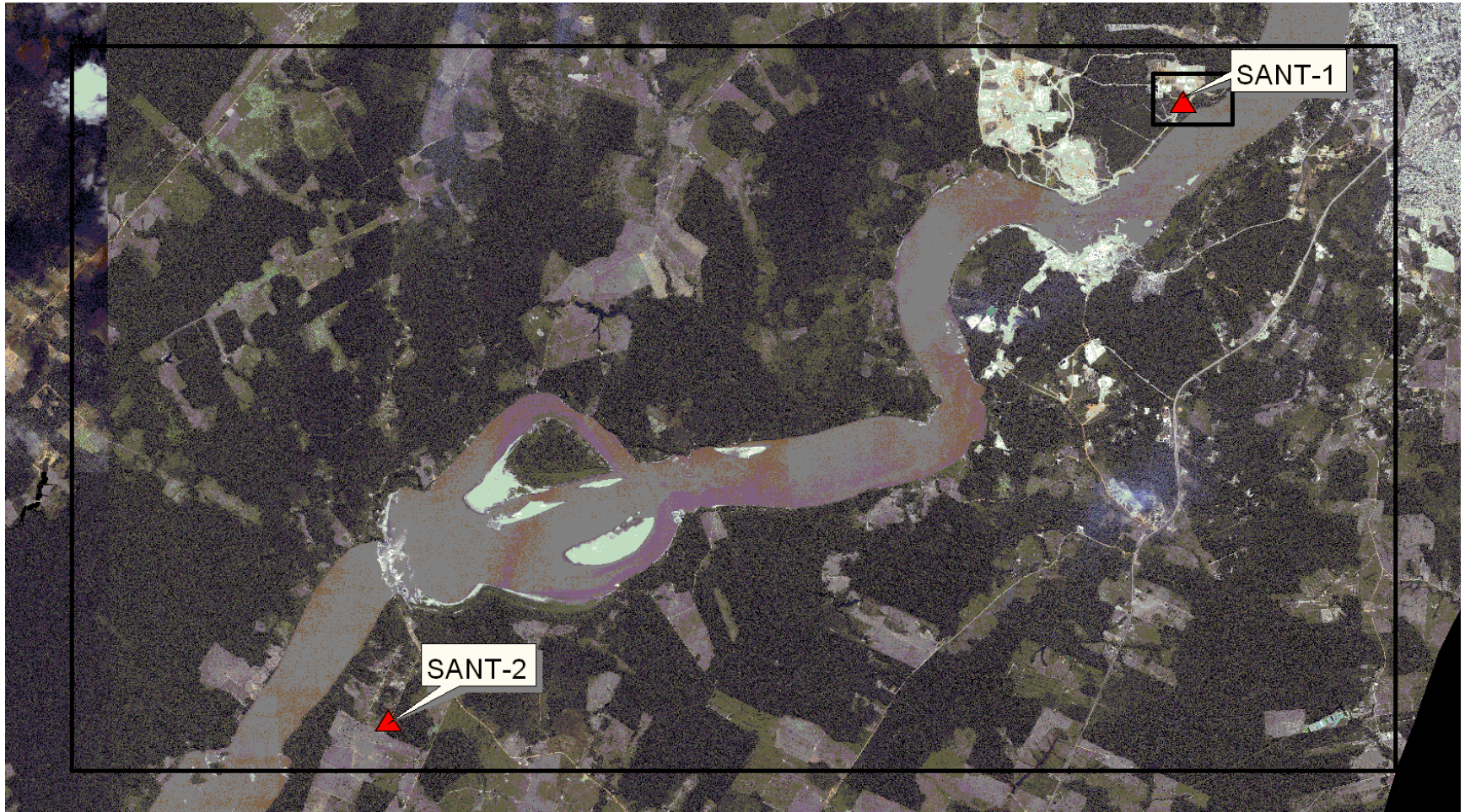
0 500 Meters

CONSULTORIA E TECNOLOGIA LTDA.

Área de estudo







SANT-1

SANT-2

# Estações Sismológicas



▲ Estações Sismológicas  
□ Área 3

0 90 180 Meters

CONSULTORIA E TECNOLOGIA LTDA.

Área de estudo

