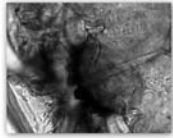


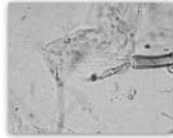
Apêndice 1 - Pranchas

PRANCHA BENTOS

Bentos



Beardius sp



Beardius sp



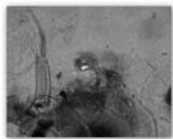
Stenochironomus sp



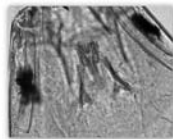
Stenochironomus sp



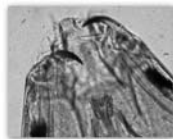
Beardius sp



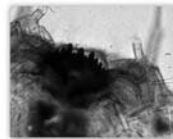
Beardius sp



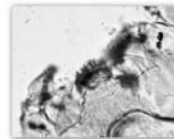
Coelotanypus sp



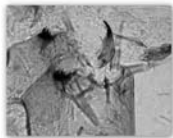
Coelotanypus sp



Chironomus sp



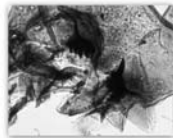
Polypedilum sp



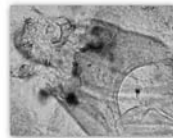
Cryptochironomus sp



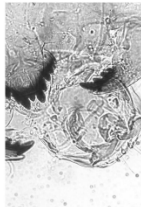
Chironomus sp



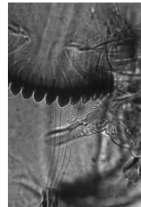
Cryptochironomus sp



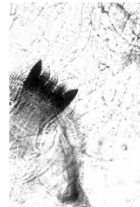
Harnischia sp



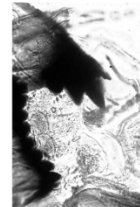
Goeldichironomus sp



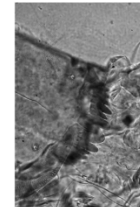
Asheum sp



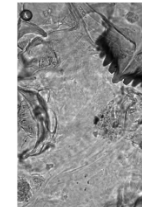
Pentaneura sp



Stenochironomus sp



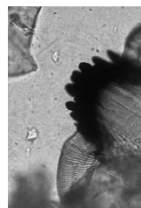
Aedokritus sp



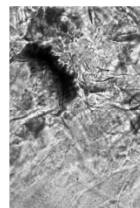
Kiefferulus sp



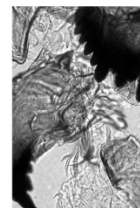
Coryneura sp



Dicotendipes sp



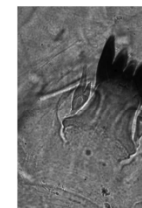
Aedokritus sp



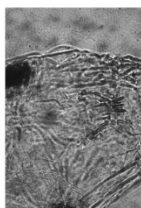
Kiefferulus sp



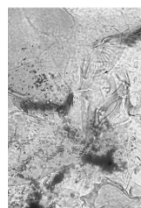
Coelotanypus sp



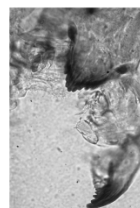
Pentaneura sp



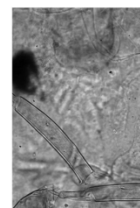
Labrundinia sp



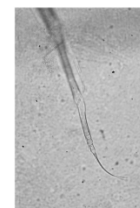
Parachironomus sp



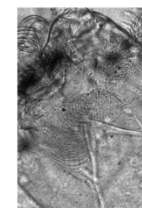
Thienemanniella sp



Tanytarsini sp

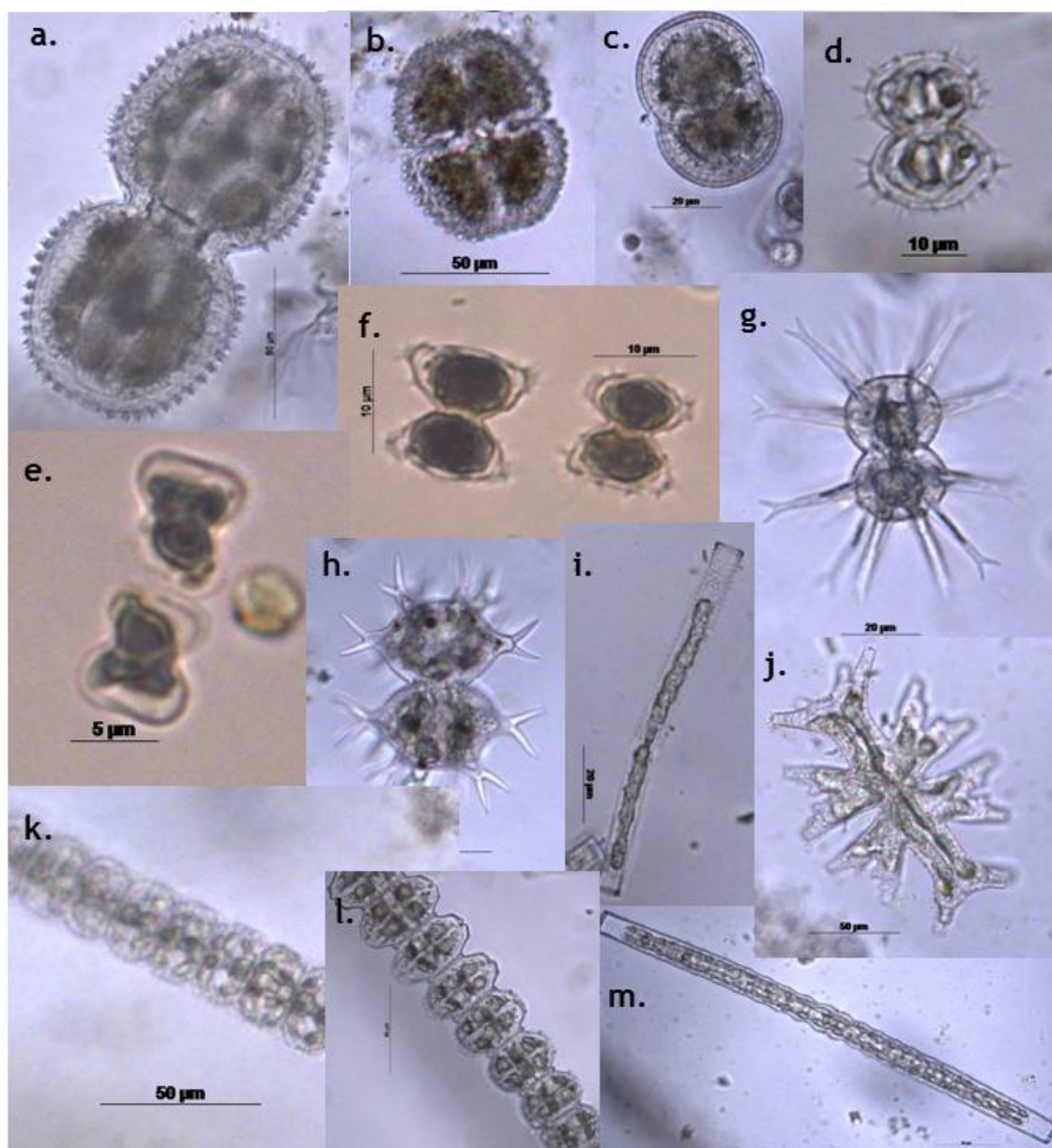


Lopescladius sp



Antenathienemanniell

PRANCHA FITOPLÂNCTON



Espécies de Zignematofíceas encontradas nos tributários e lagos e canais no mês de novembro de 2012 - a. *Cosmarium denticulatum*; b. *Cosmarium margaritifera*; c. *Cosmarium pseudoconatum*; d. *Staurastrum varians*; e. *Cosmarium* cf. *majae*; f. *Staurastrum trifidum*; g. *Staurastrum leptacanthum*; h. *Xanthidium sexangulare*; i. *Gonatozygon monotaenium*; j. *Micrasterias mahabules*; k. *Desmidium aequale*; l. *Desmidium grevillii*; m. *Pleurotaenium trabecula*.

PRANCHA MACROFITAS

Macrófitas



Imagens da seca - Águas Baixas 2010



Perda de profundidade bem acentuada



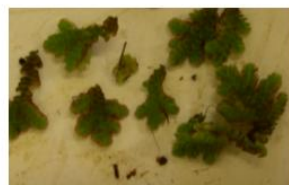
Salvinia minima



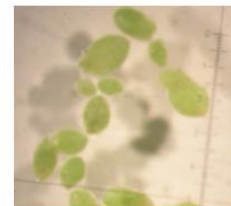
Ceratopteris pteridoides



Utricularia sp



Azolla filiculoides

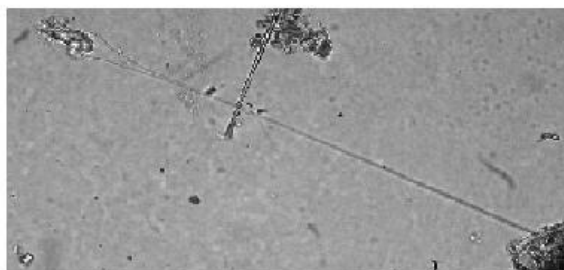
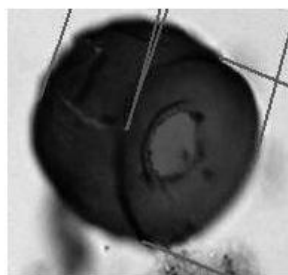
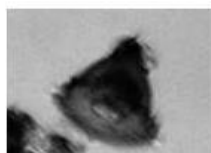
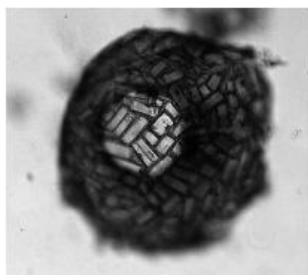


Lemna minor

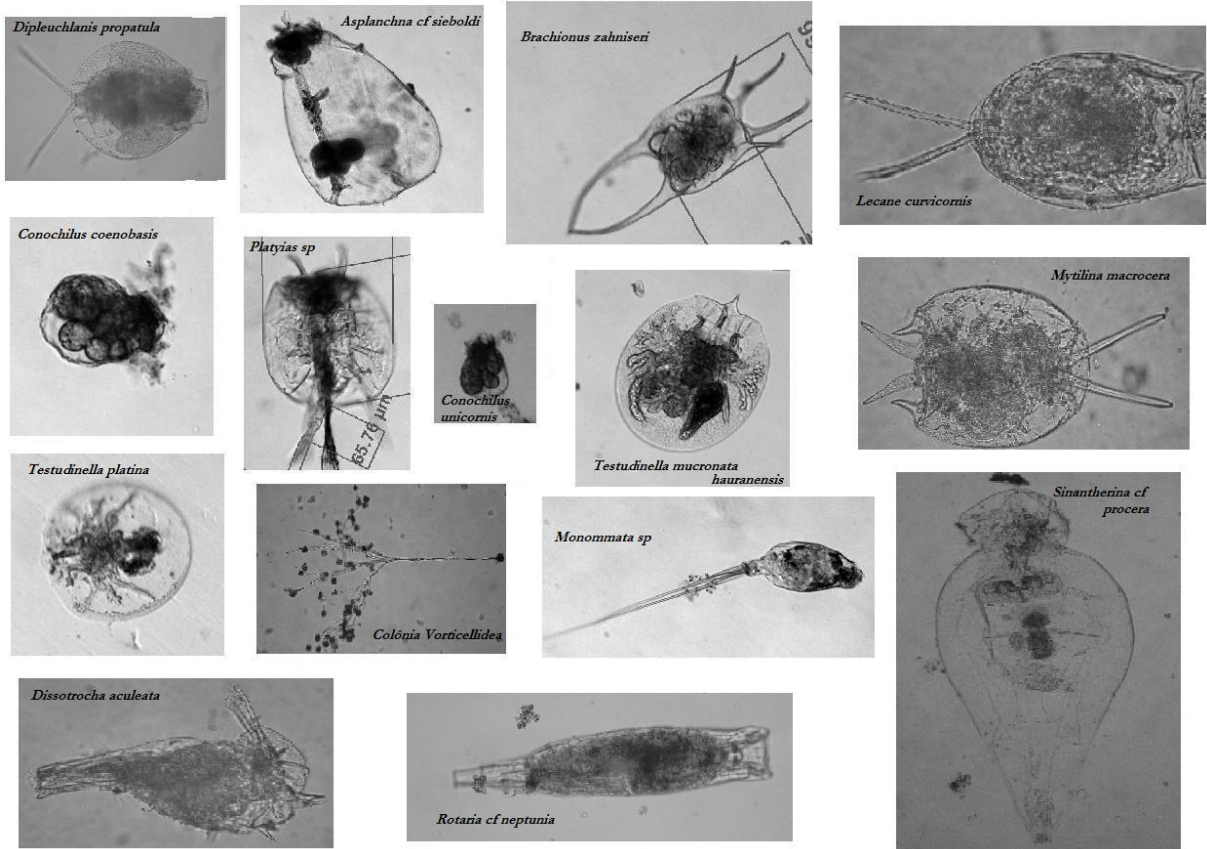
PRANCHA ZOOPLÂNCTON

Protozoários

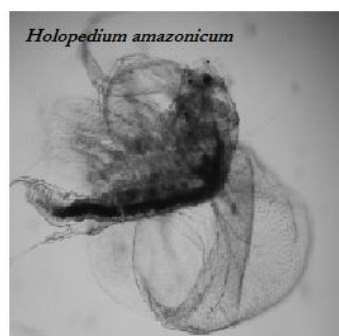
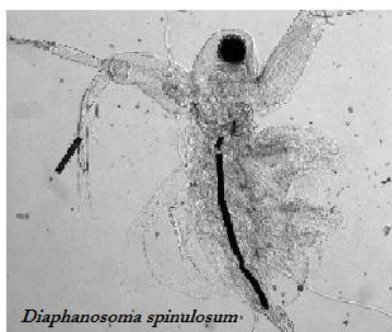
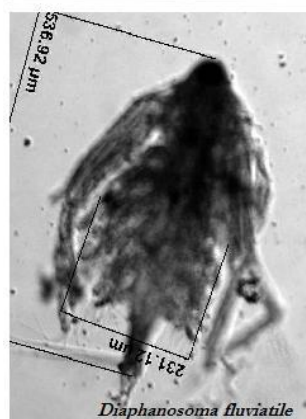
Diferentes espécies de *Arcella* sp



Rotíferos

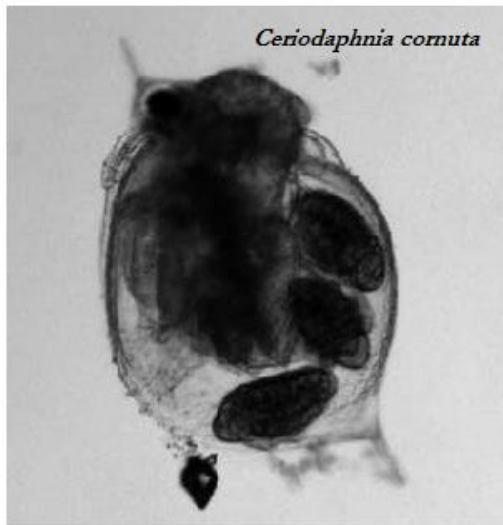


Cladóceros Família Sididae

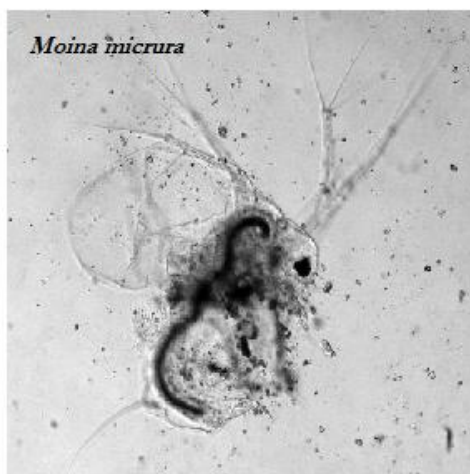


Cladóceros

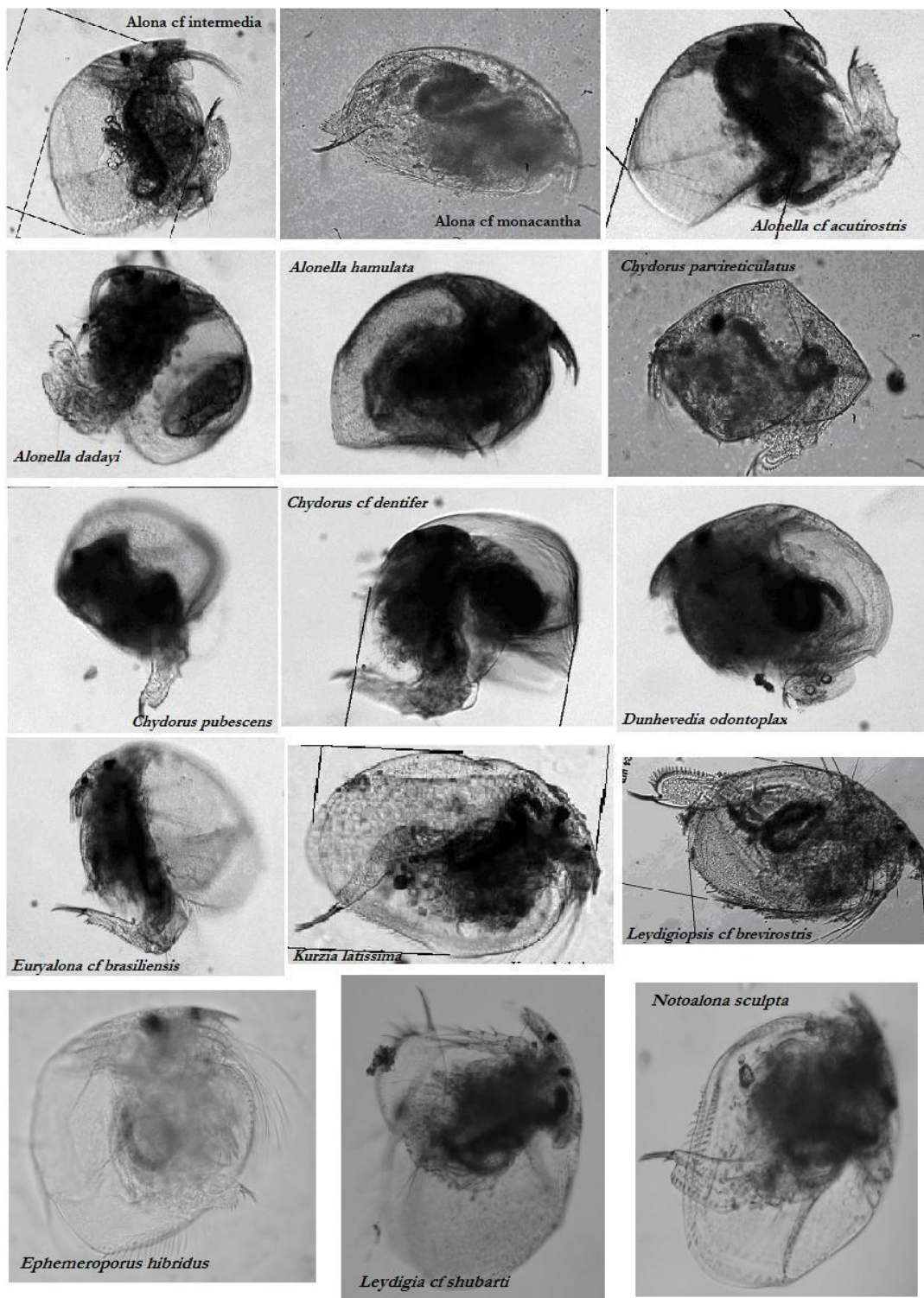
Família Daphnidae



Família Moinidae

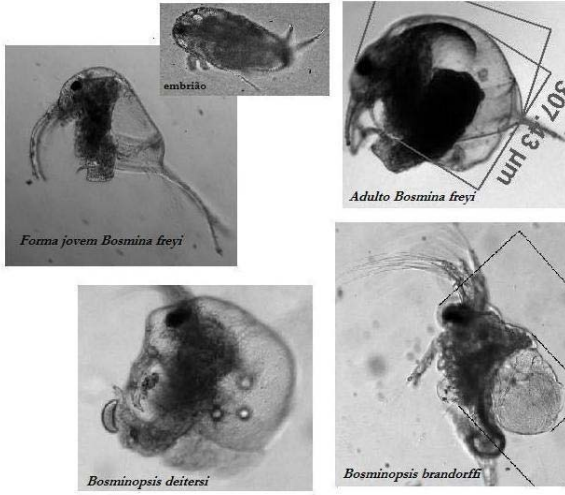


Cladóceros Família Chydoridae

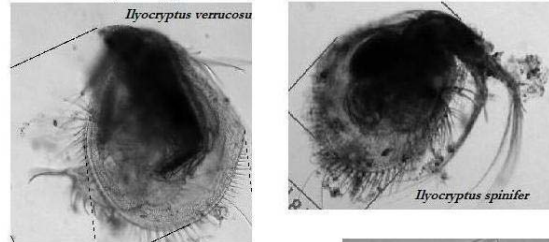


Cladóceros

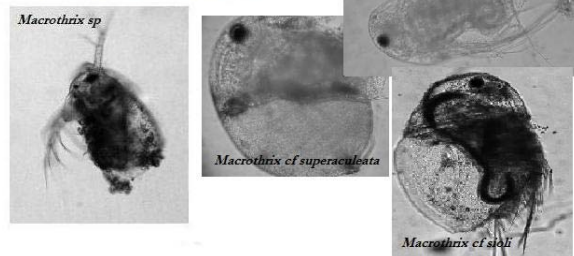
Família Bosminidae



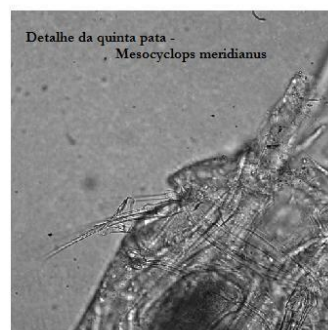
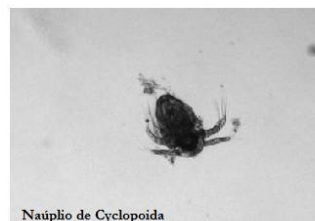
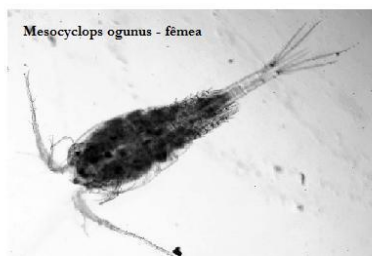
Família Ilyocryptidae



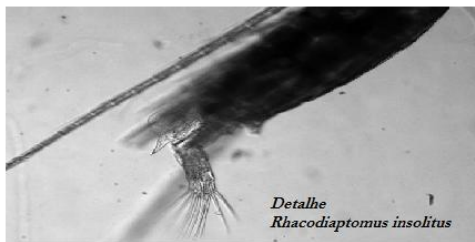
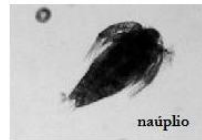
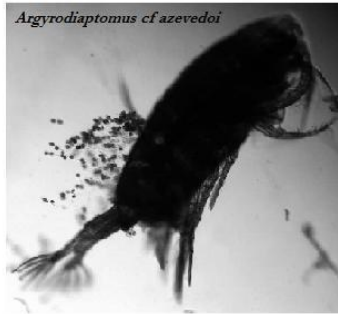
Família Macrothricidae



Copepoda Cyclopoida



Copepoda Calanoida



Outros Grupos

