

SM-116

IMAGEM 2D

UHE ITAOCARA

Borehole: SM-116

OMBREIRA ESQUERDA

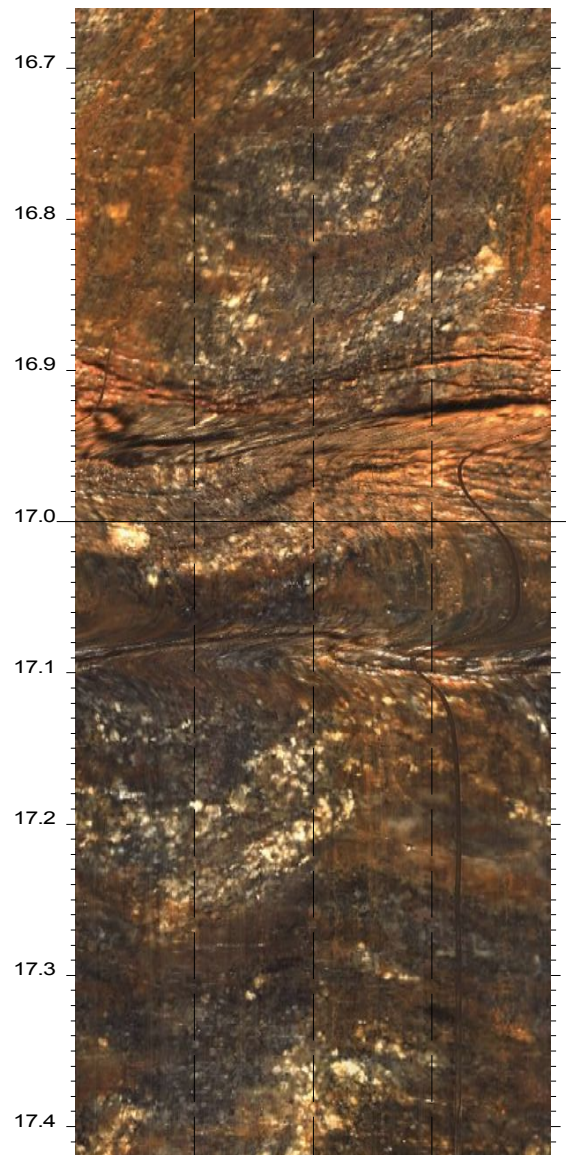
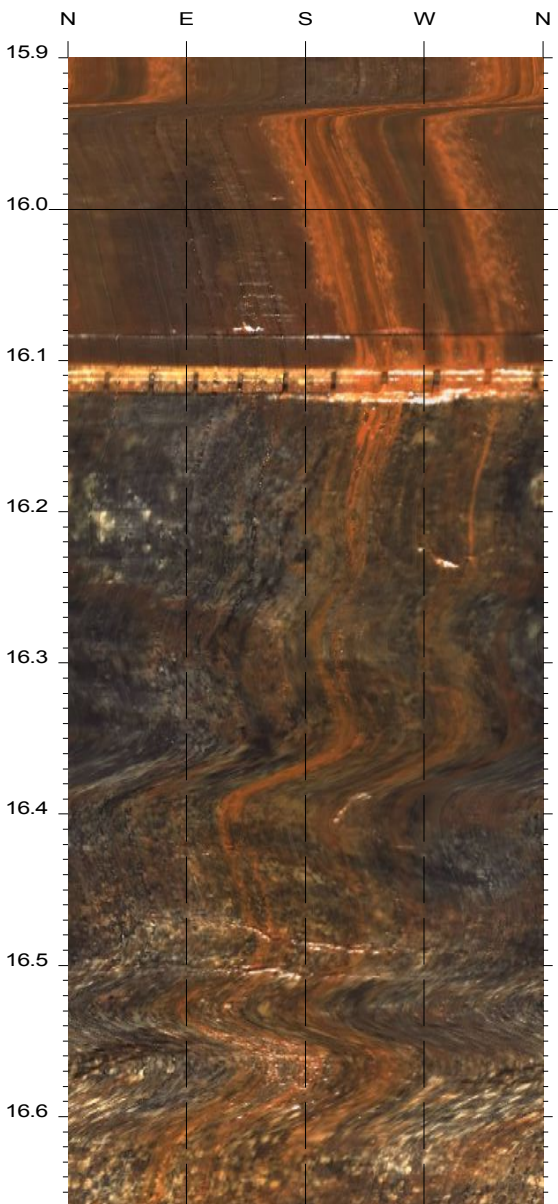
top of borehole.....

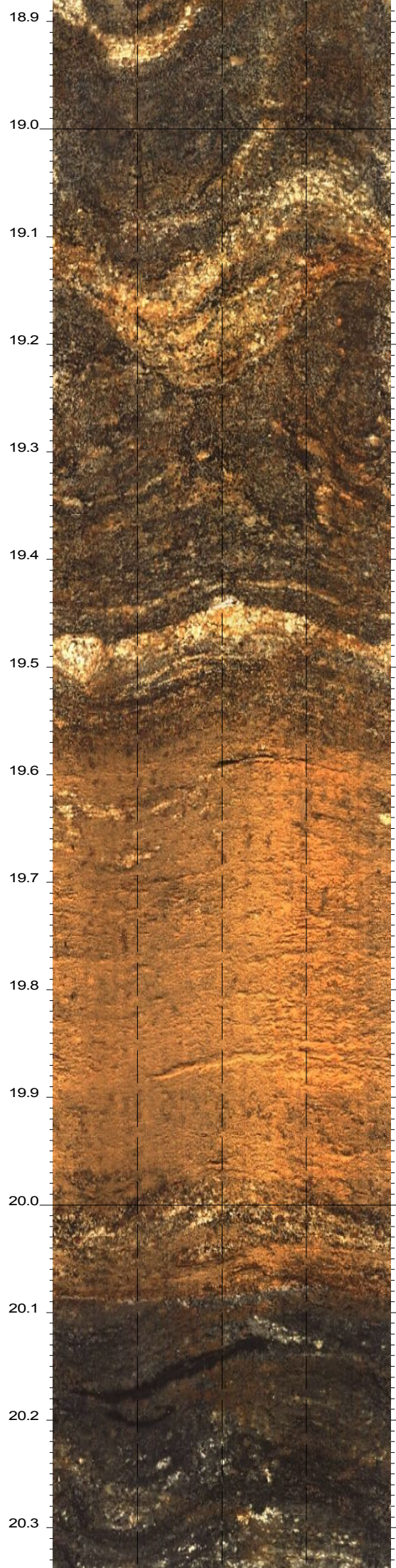
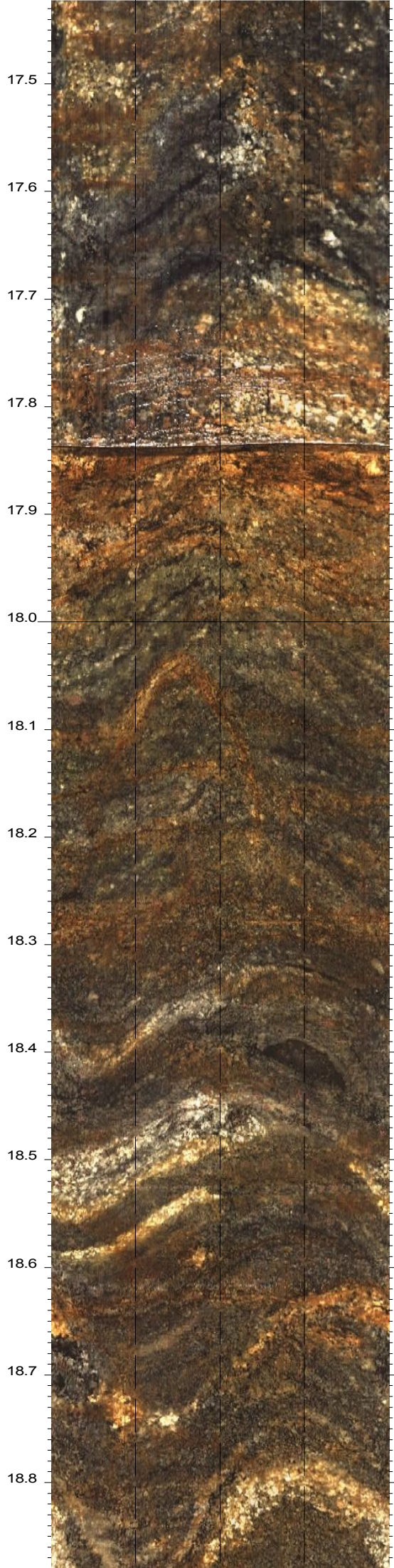
East:
North:
Elev:

North ref. is magnetic
Depth units are metres
Vertical scale: 1/5
Horiz scale = vert scale

Zone from 26.1190 to 15.9000m
Format: BHTV NESWN

Borehole diam: 10.000cm
data intervals.....
Azimuth: 0.6667deg
Depth: 0.0010m





20.4
20.5
20.6
20.7
20.8
20.9
21.0
21.1
21.2
21.3
21.4
21.5
21.6
21.7



21.8
21.9
22.0
22.1
22.2
22.3
22.4
22.5
22.6
22.7
22.8
22.9
23.0
23.1
23.2



23.3
23.4
23.5
23.6
23.7
23.8
23.9
24.0
24.1
24.2
24.3
24.4
24.5
24.6



24.7
24.8
24.9
25.0
25.1
25.2
25.3
25.4
25.5
25.6
25.7
25.8
25.9
26.0
26.1



TESTEMUNHO VIRTUAL

UHE ITAOCARA

Borehole: SM-116

OMBREIRA ESQUERDA

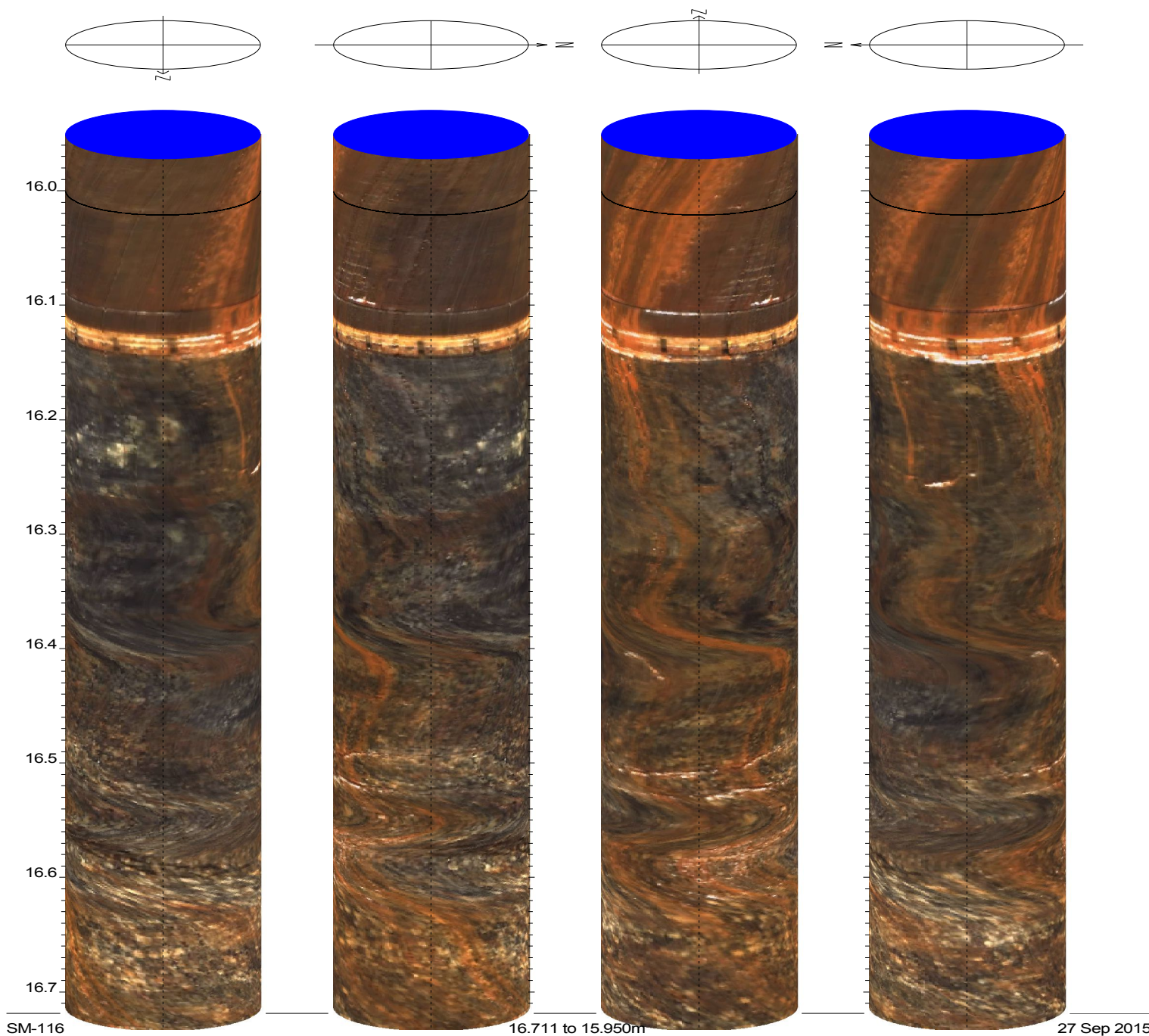
top of borehole.....

East:
 North:
 Elev:

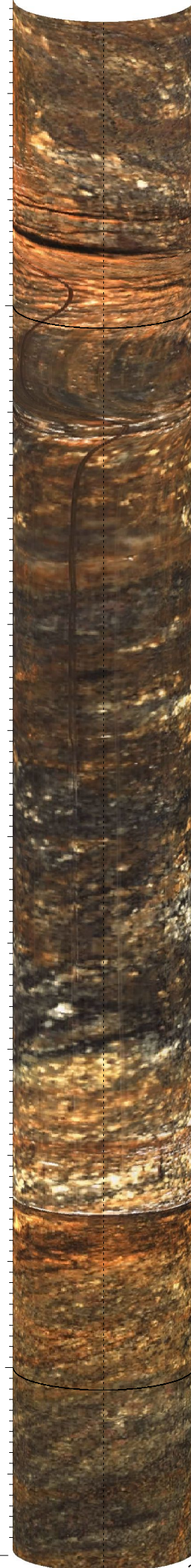
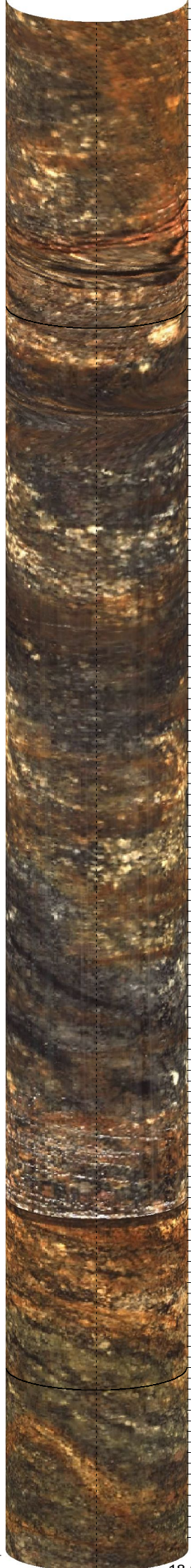
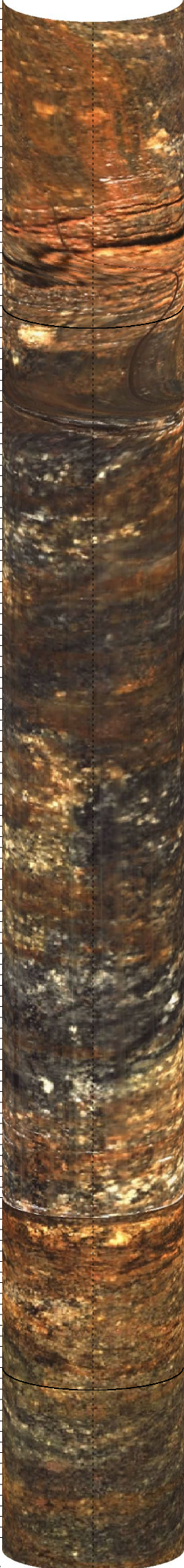
North ref. is magnetic
 Depth units are metres
 Vertical scale: 1/5

Zone from 26.120 to 15.950m
 Cores oriented: N000 N090 N180 N270

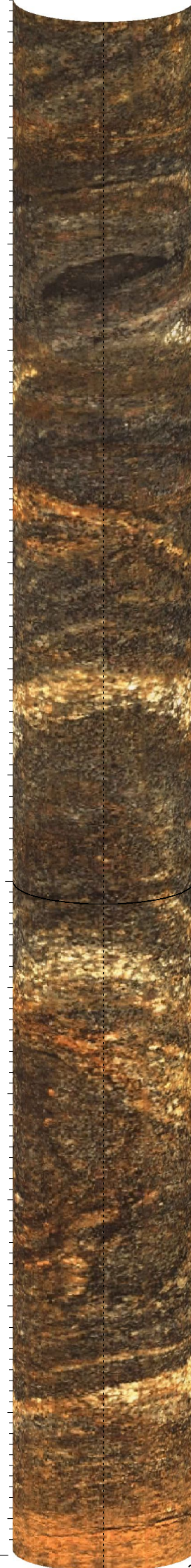
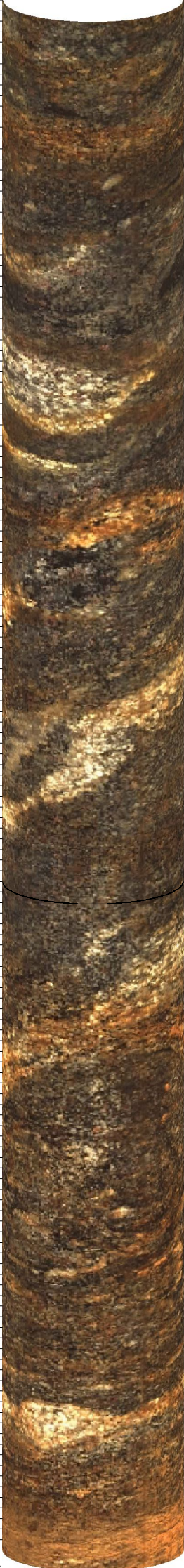
Borehole diam: 10.000cm
 data intervals
 radial: 0.6667deg
 axial: 0.0010m



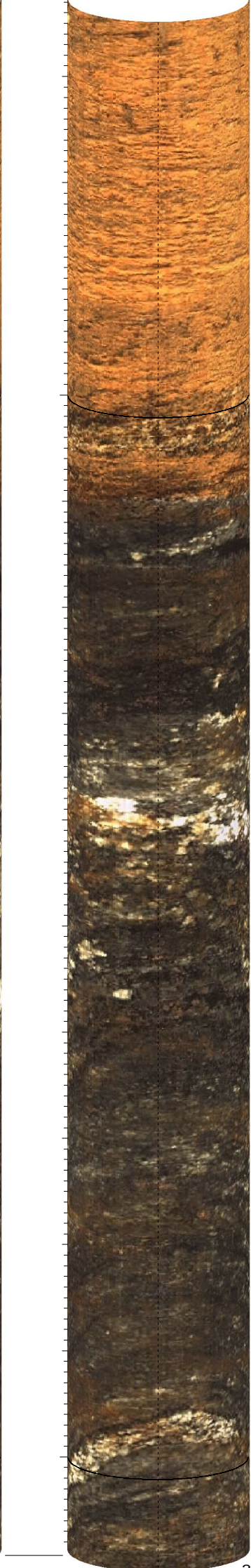
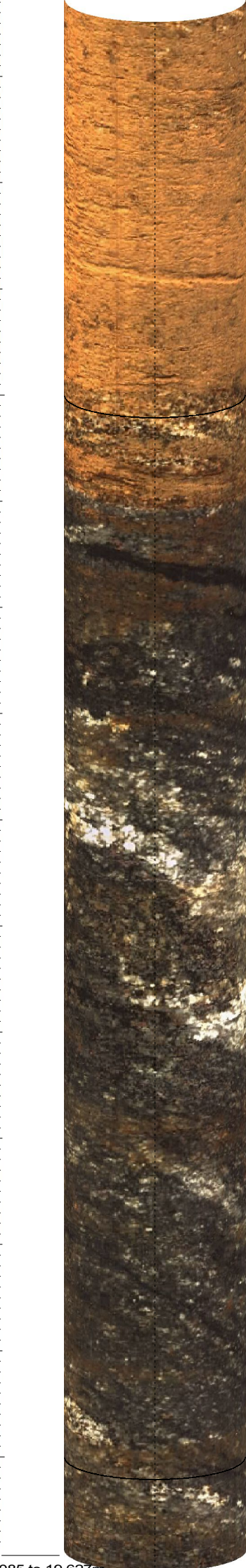
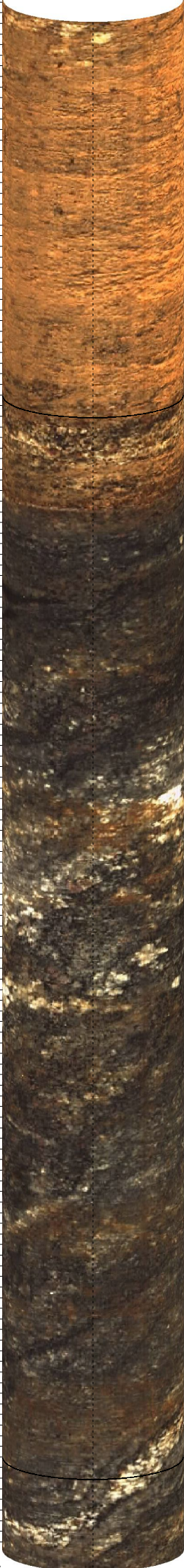
16.8
16.9
17.0
17.1
17.2
17.3
17.4
17.5
17.6
17.7
17.8
17.9
18.0
18.1



18.2
18.3
18.4
18.5
18.6
18.7
18.8
18.9
19.0
19.1
19.2
19.3
19.4
19.5
19.6



19.7
19.8
19.9
20.0
20.1
20.2
20.3
20.4
20.5
20.6
20.7
20.8
20.9
21.0



21.1
21.2
21.3
21.4
21.5
21.6
21.7
21.8
21.9
22.0
22.1
22.2
22.3
22.4
22.5

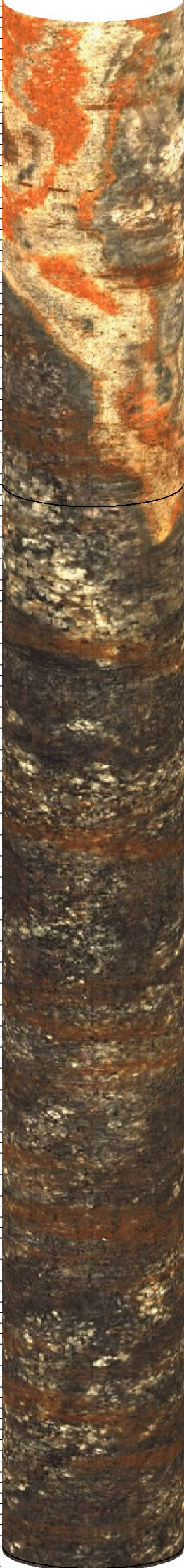


SM-116

22.543 to 21.085m

27 Sep 2015

22.6
22.7
22.8
22.9
23.0
23.1
23.2
23.3
23.4
23.5
23.6
23.7
23.8
23.9
24.0



SM-116

24.001 to 22.543m

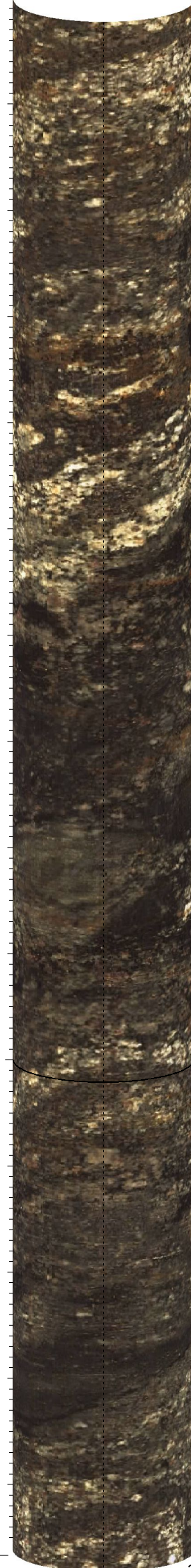


27 Sep 2015

24.1
24.2
24.3
24.4
24.5
24.6
24.7
24.8
24.9
25.0
25.1
25.2
25.3
25.4

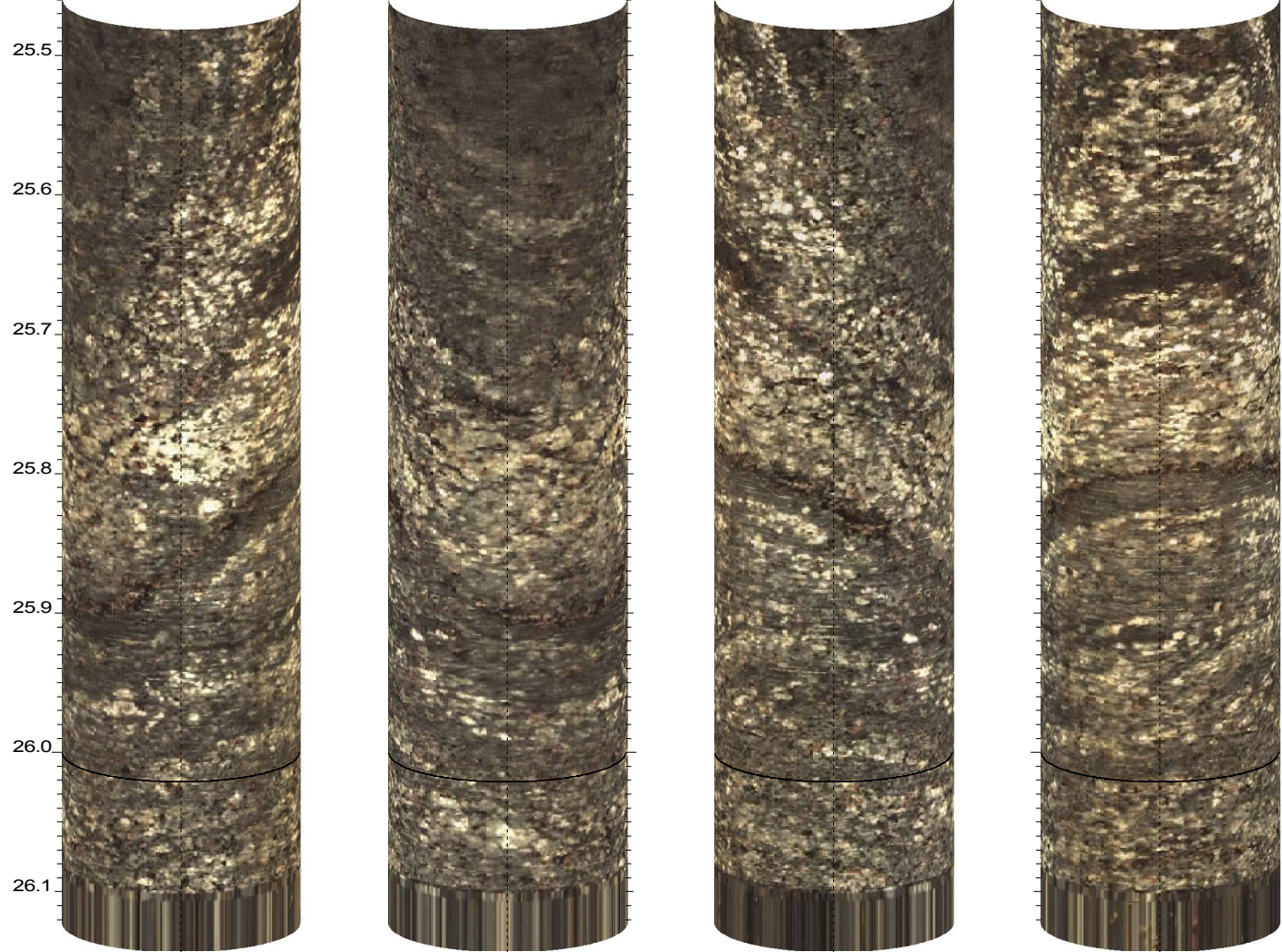


25.459 to 24.001m



27 Sep 2015

SM-116



ATITUDES
DESCONTINUIDADES

UHE ITAOCARA

Borehole: SM-116

OMBREIRA ESQUERDA

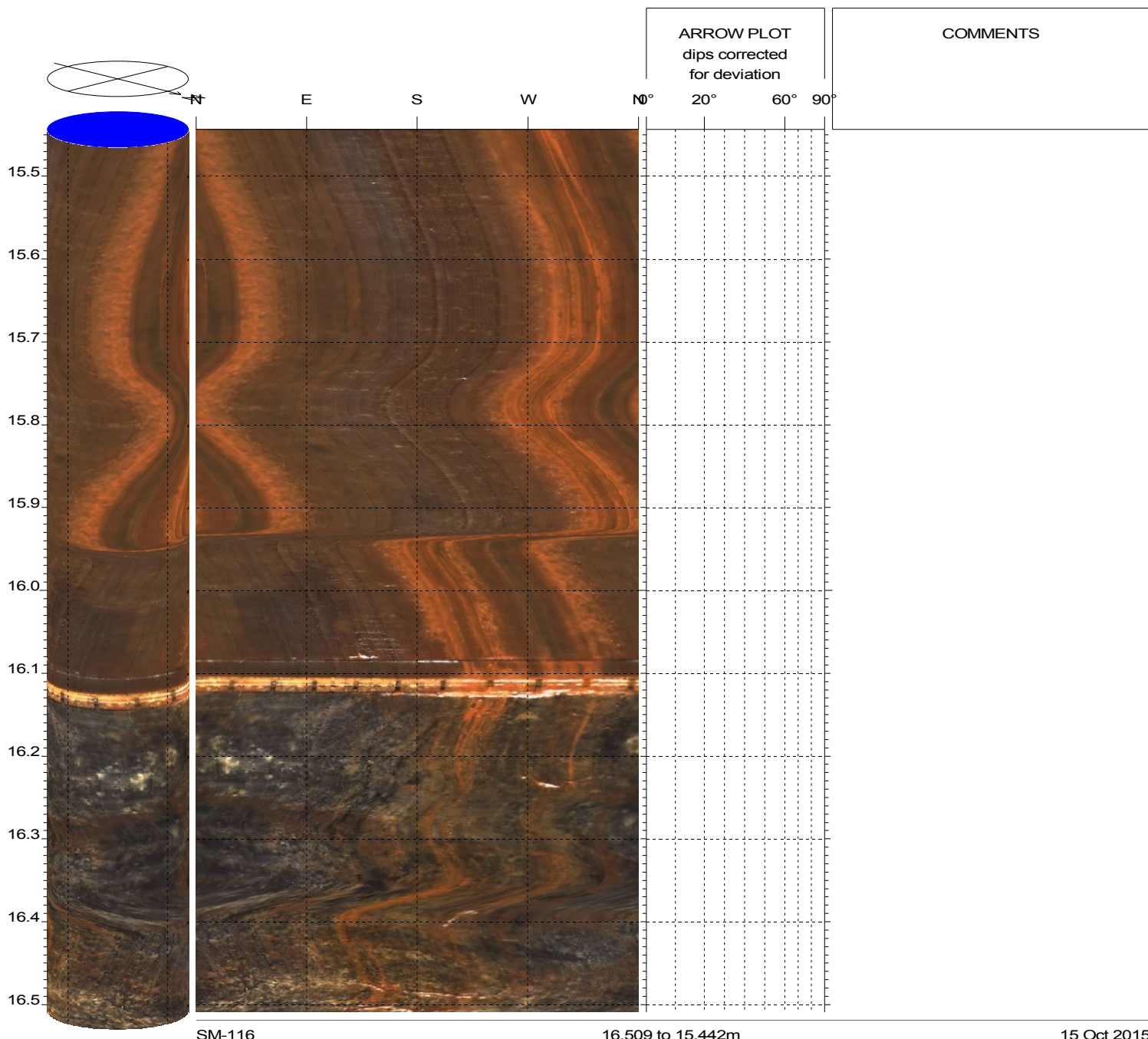
top of borehole.....

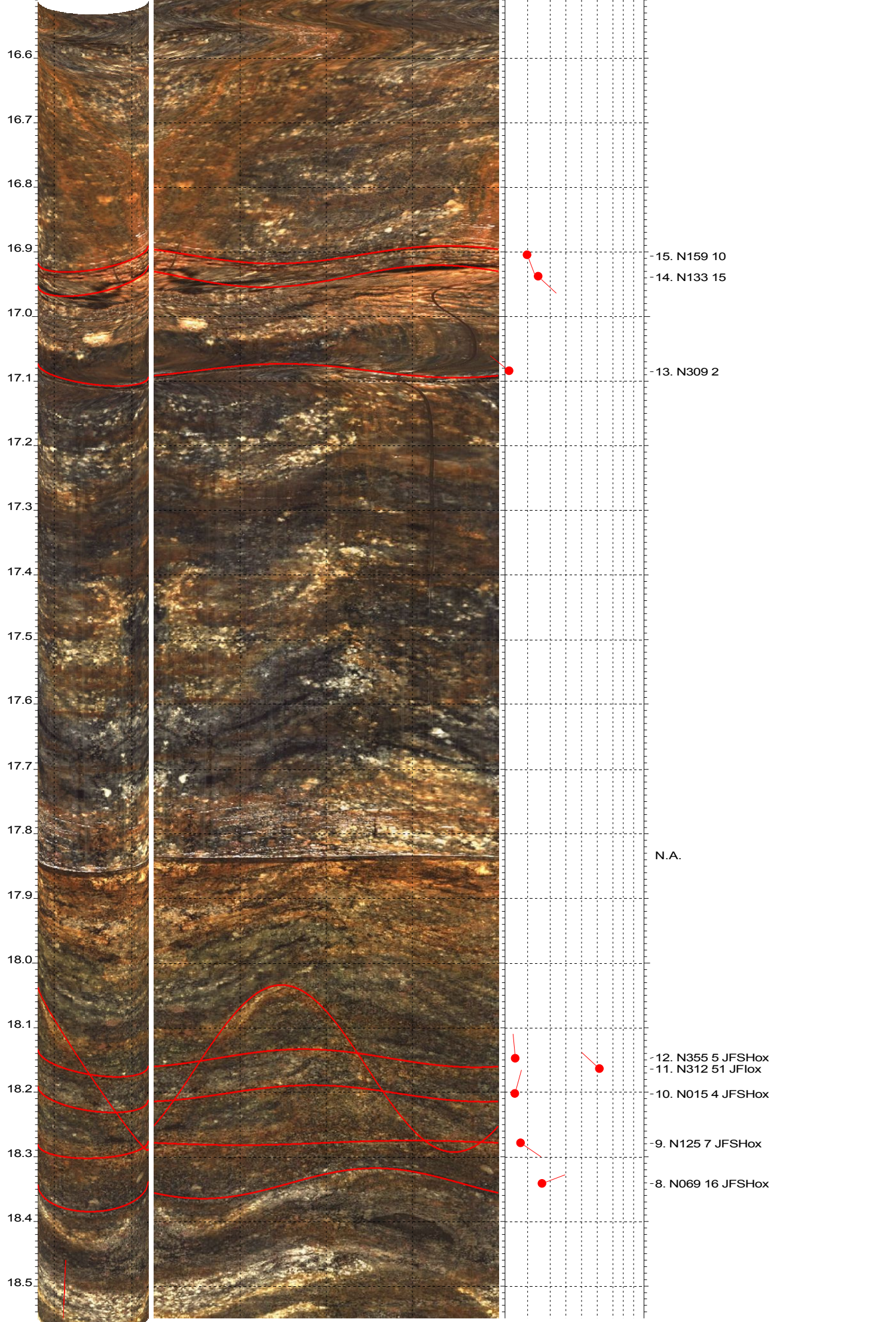
East:
 North:
 Elev:

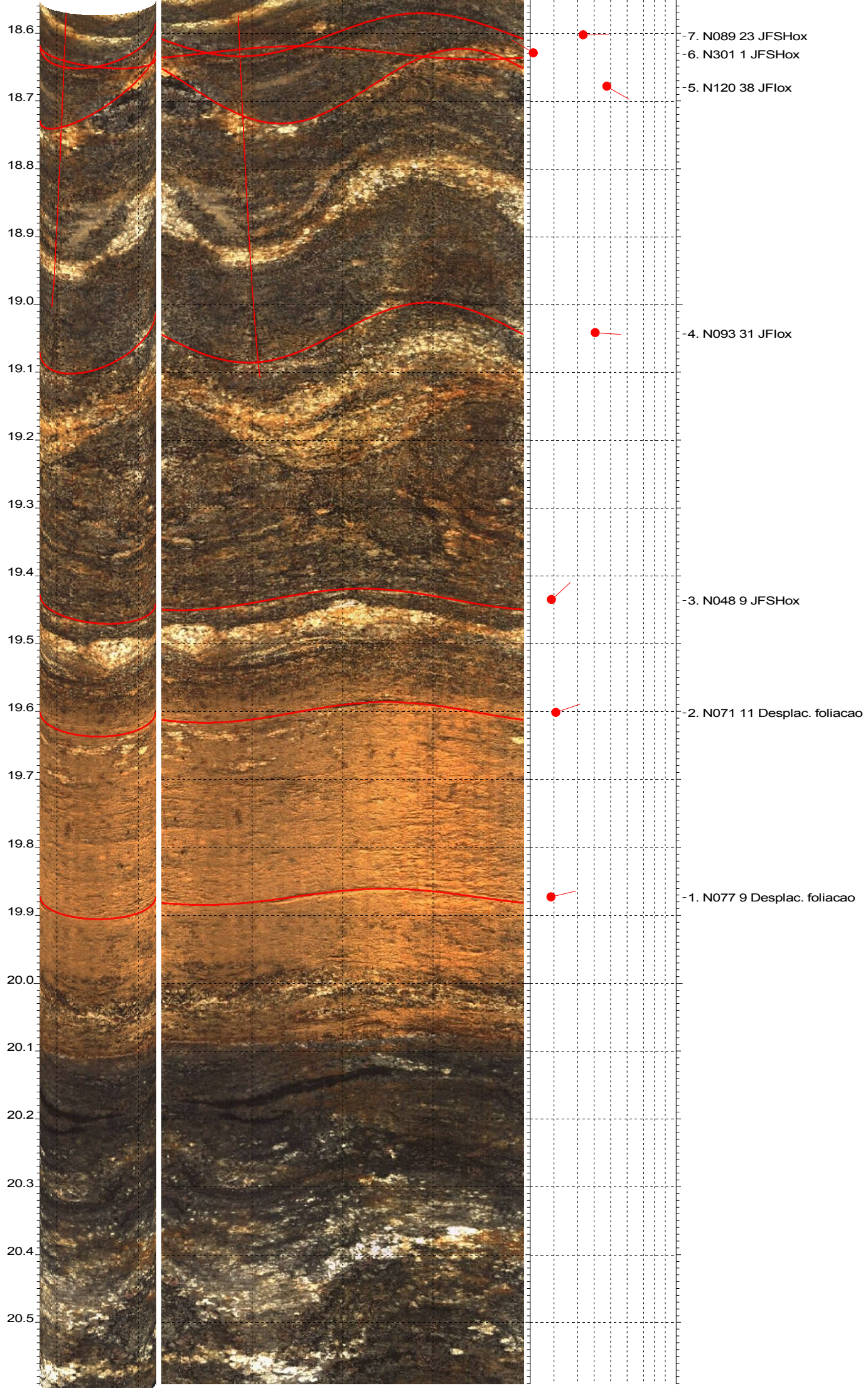
North ref. is magnetic
 Depth units are metres
 Vertical scale: 1/7

Zone from 26.120 to 15.442m
 Format: BHTV-NESWN

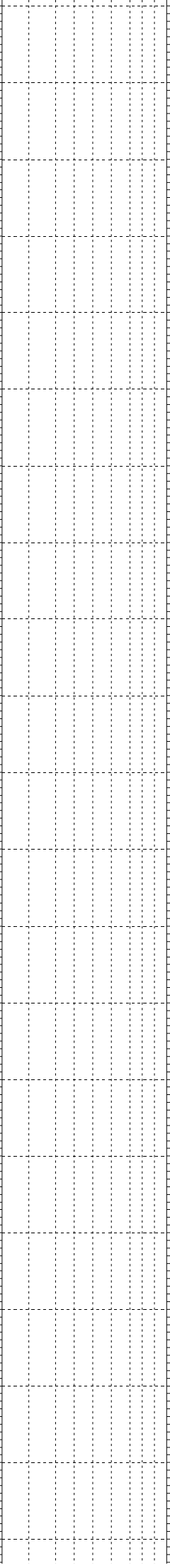
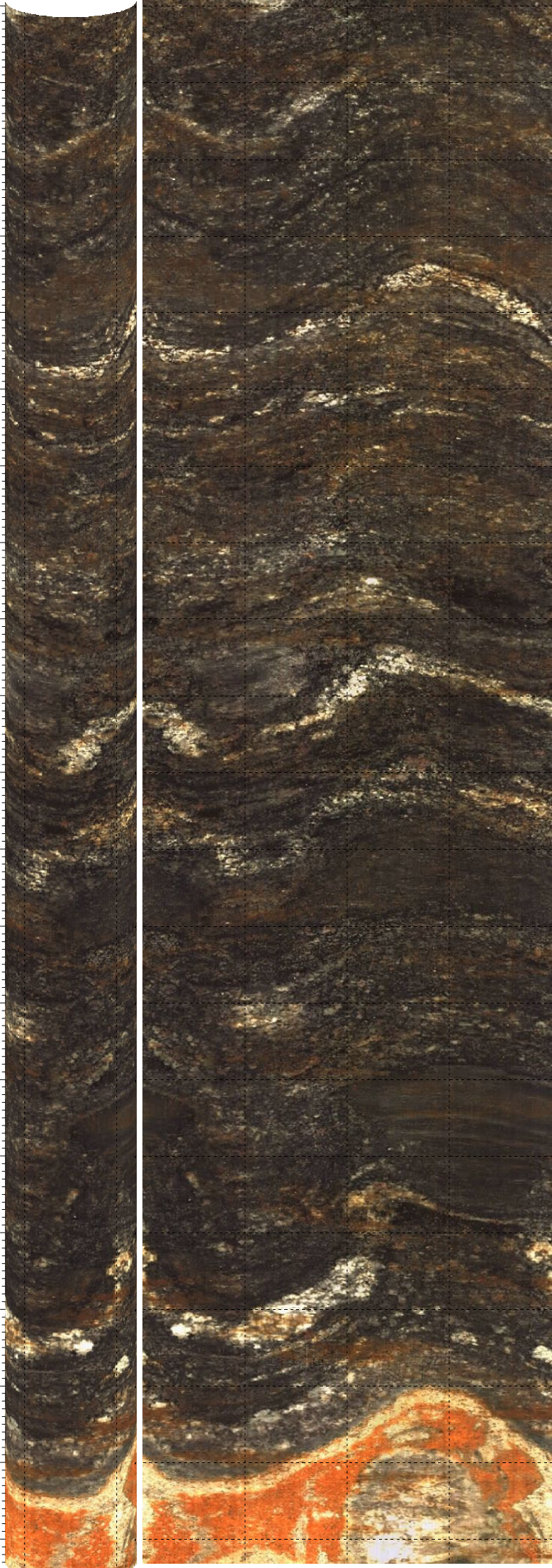
Borehole diam: 10.000cm
 Vertical = borehole-axis







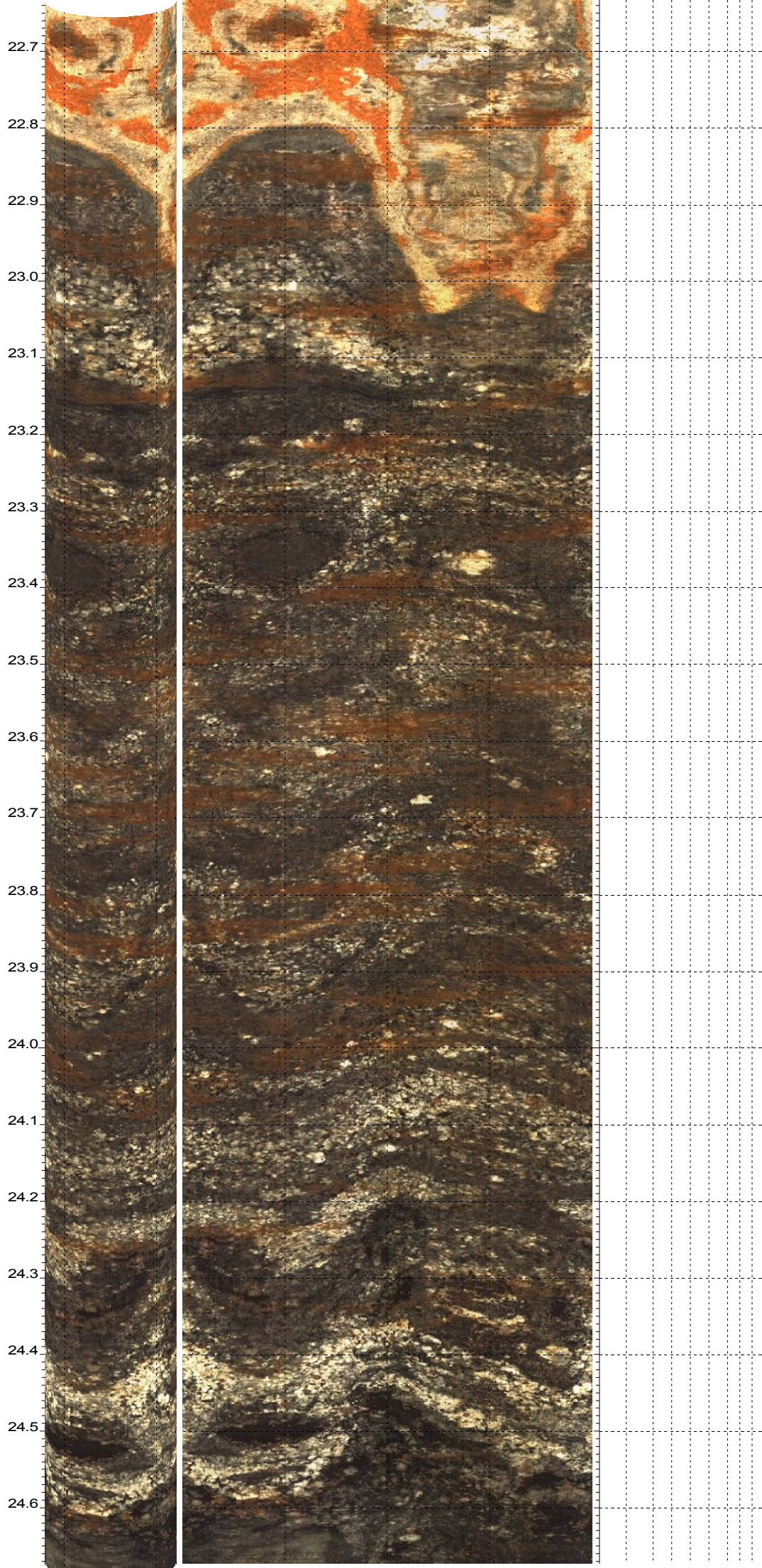
20.6
20.7
20.8
20.9
21.0
21.1
21.2
21.3
21.4
21.5
21.6
21.7
21.8
21.9
22.0
22.1
22.2
22.3
22.4
22.5
22.6

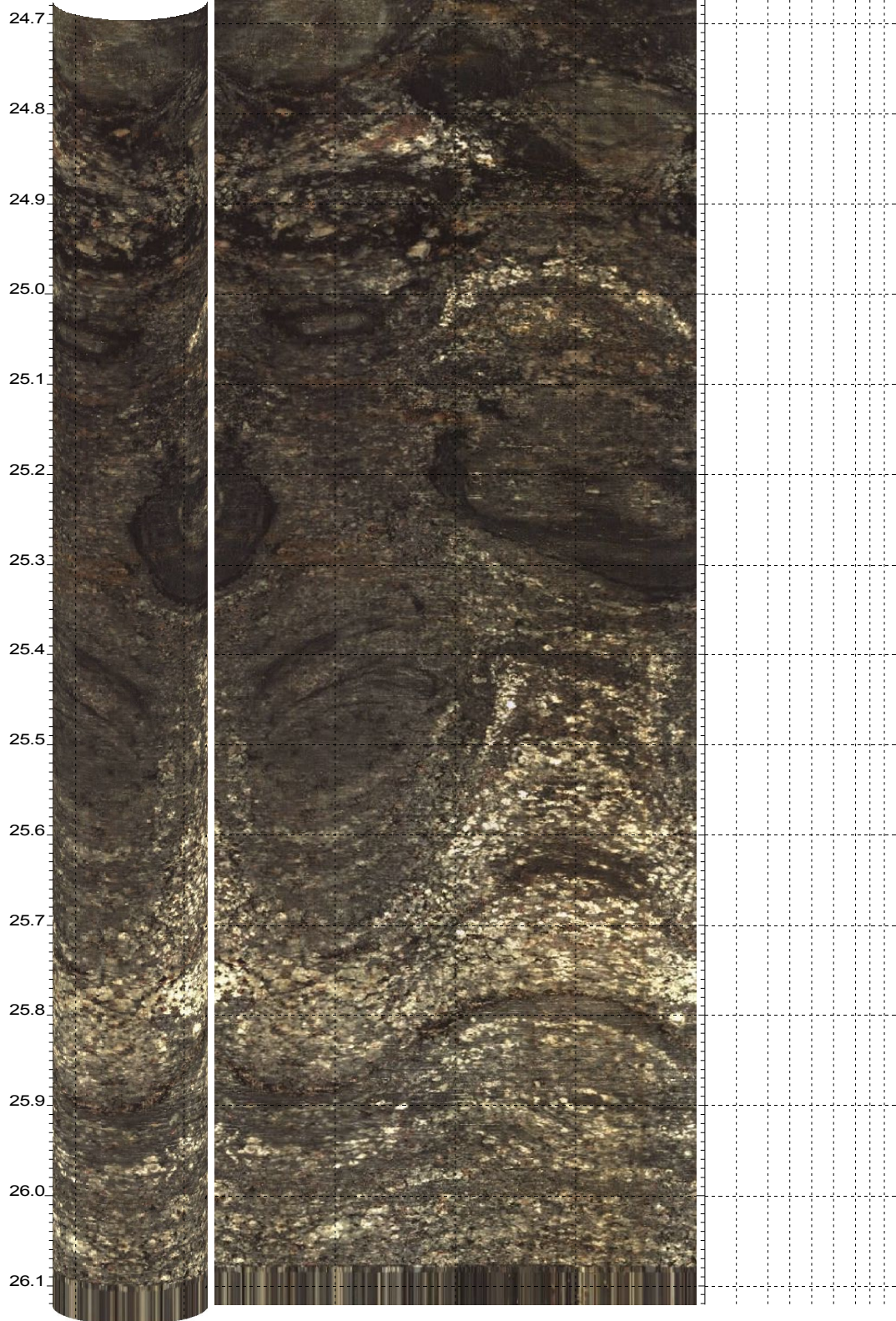


SM-116

22.632 to 20.591m

15 Oct 2015



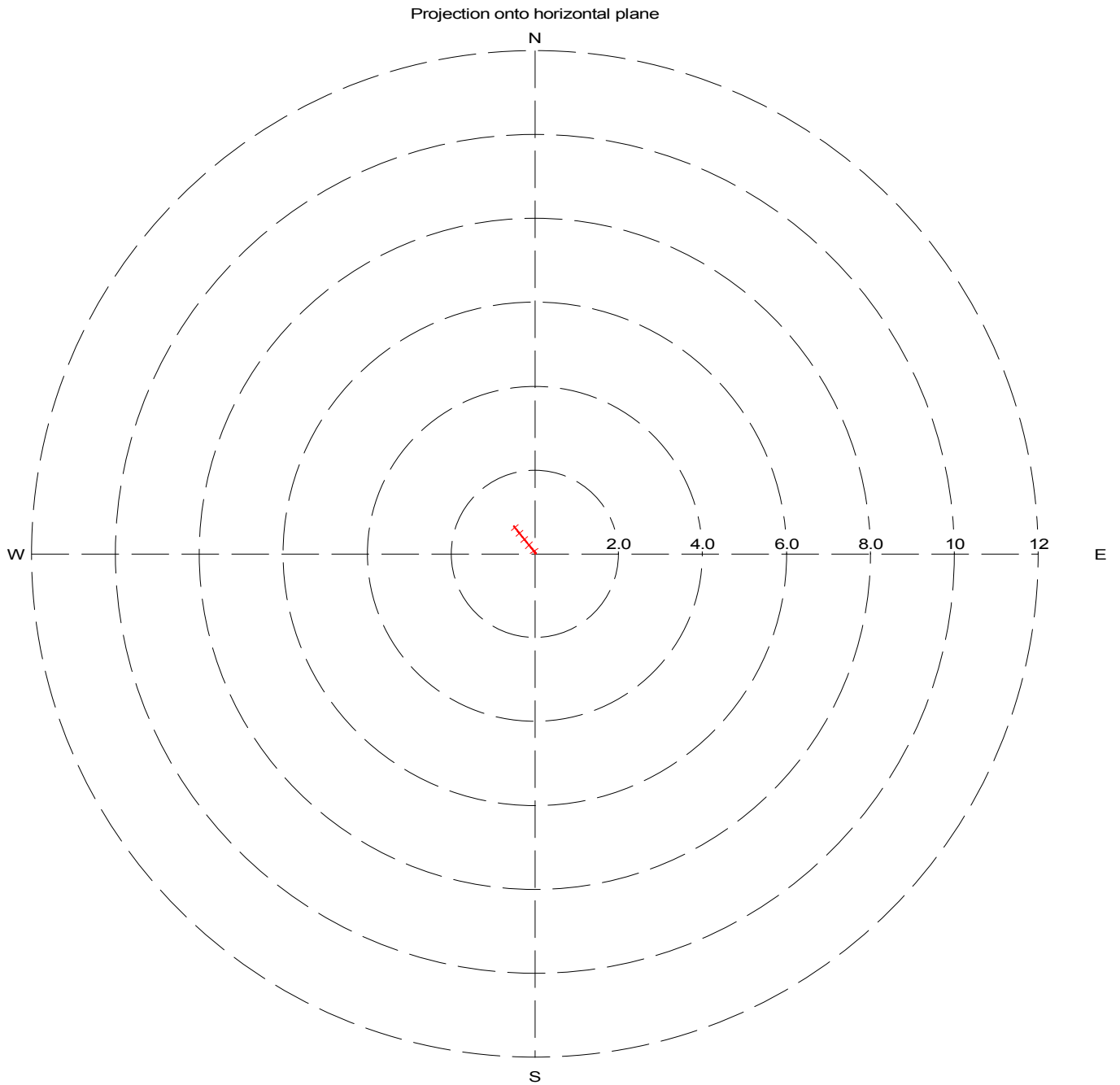


DESVIO SONDAGEM

Borehole: SM-116 Sonde: OPTV
Zone from: 15.454 to 26.050m
North ref is magnetic
Mean deviation: 4.63 to N322.52
End coordinates

- North: 0.674
- East : -0.522
- Down : 10.502

Azimuth of end: N322.25
Distance start-end: 0.853m
Distance marks every 2m
15 Oct 2015

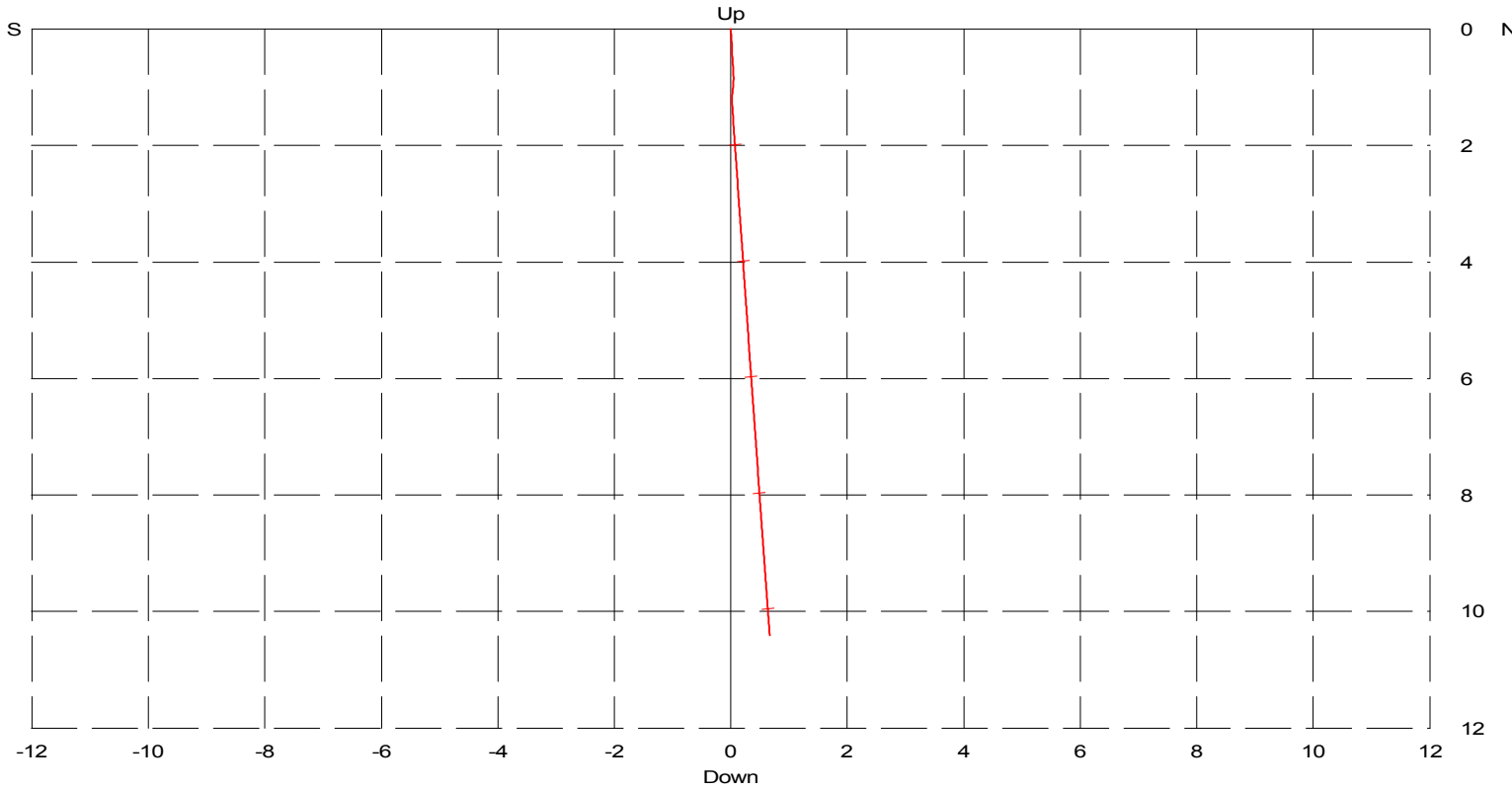


Borehole: SM-116 Sonde: OPTV
Zone from: 15.454 to 26.050m
North ref is magnetic
Mean deviation: 4.63 to N322.52
End coordinates

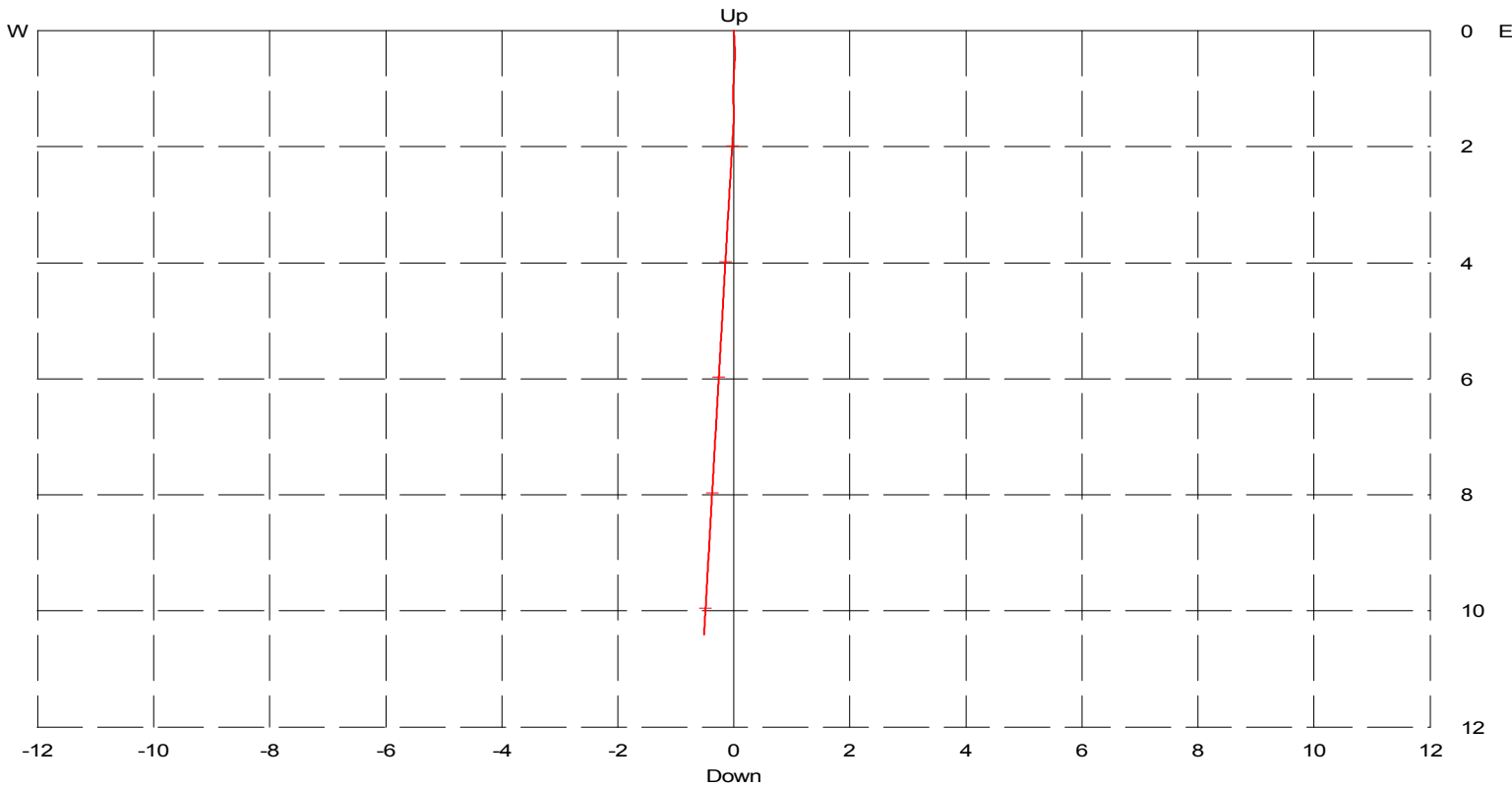
- North: 0.674
- East : -0.522
- Down : 10.502

Azimuth of end: N322.25
Distance start-end: 0.853m
Distance marks every 2m
15 Oct 2015

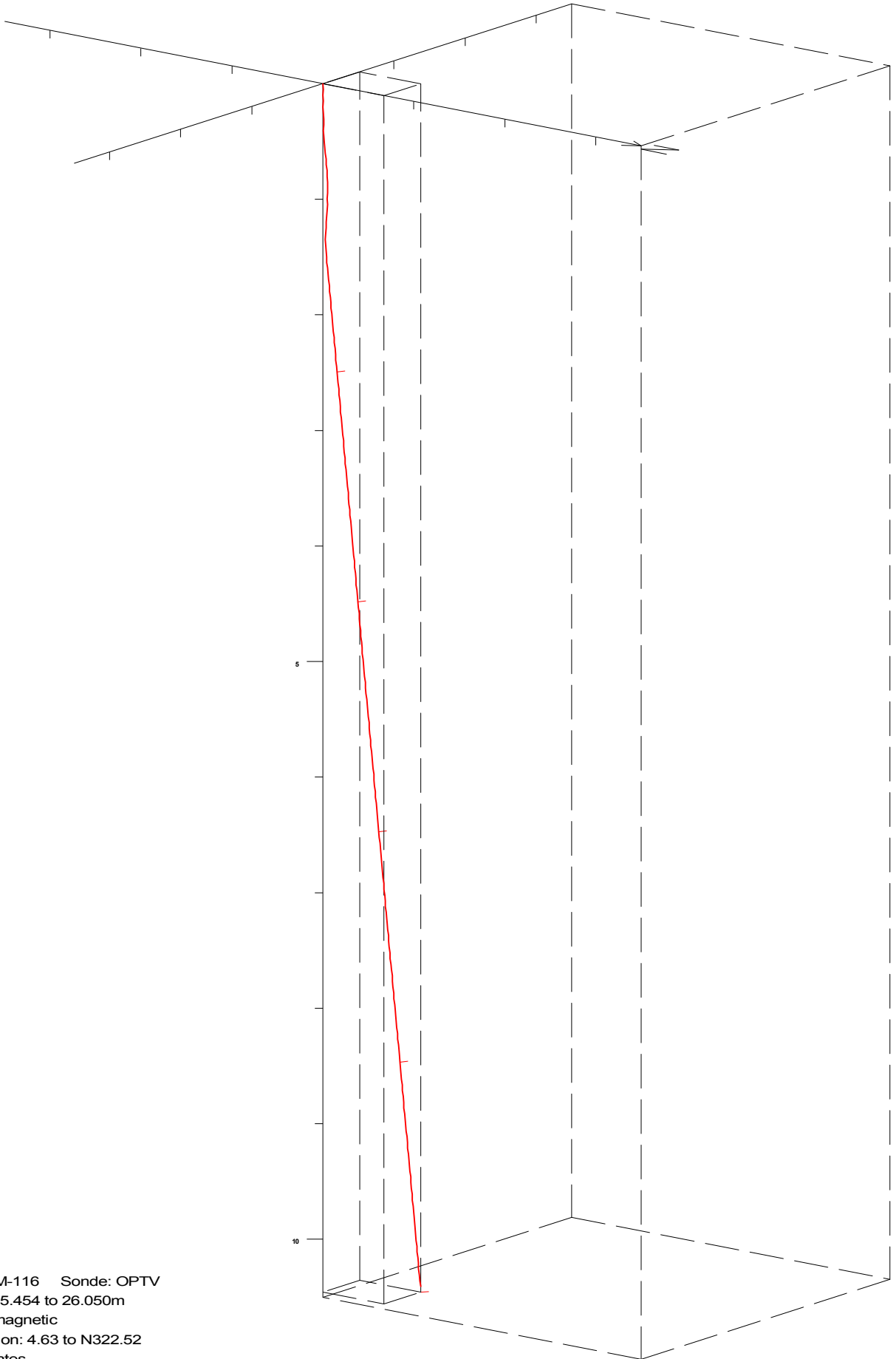
Projection onto vertical N-S plane



Projection onto vertical E-W plane



Deviated borehole in orthographic projection, viewed from N52



Borehole: SM-116 Sonde: OPTV
Zone from: 15.454 to 26.050m
North ref is magnetic
Mean deviation: 4.63 to N322.52
End coordinates

North: 0.674
East : -0.522
Down : 10.502

Azimuth of end: N322.25
Distance start-end: 0.853m
Viewpoint: N52
15 Oct 2015