

**SM-104**

**IMAGEM 2D**

UHE ITAOCARA

Borehole: SM-104

BARRAMENTO ILHA

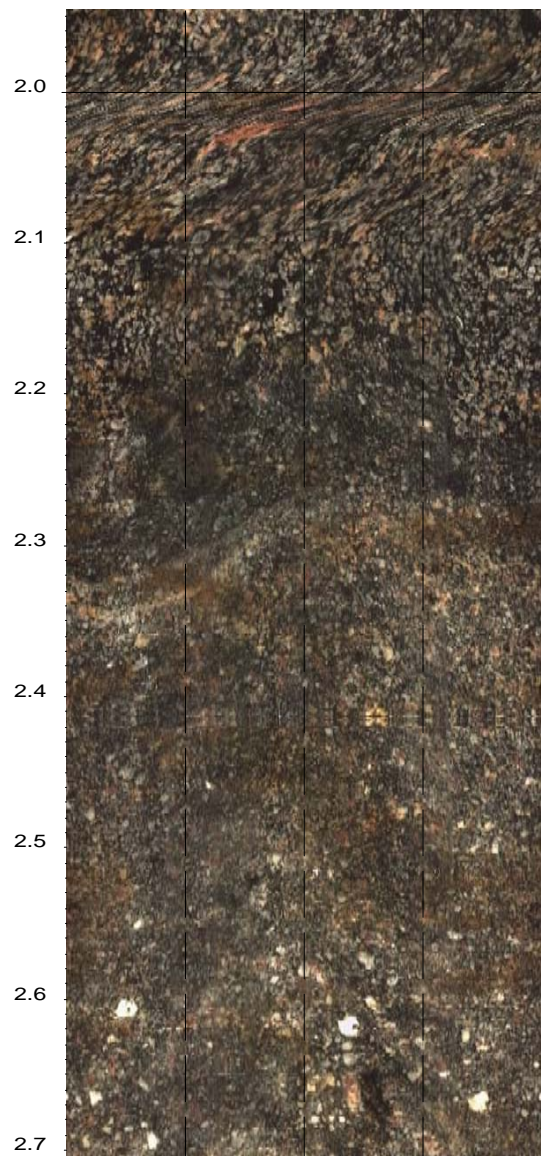
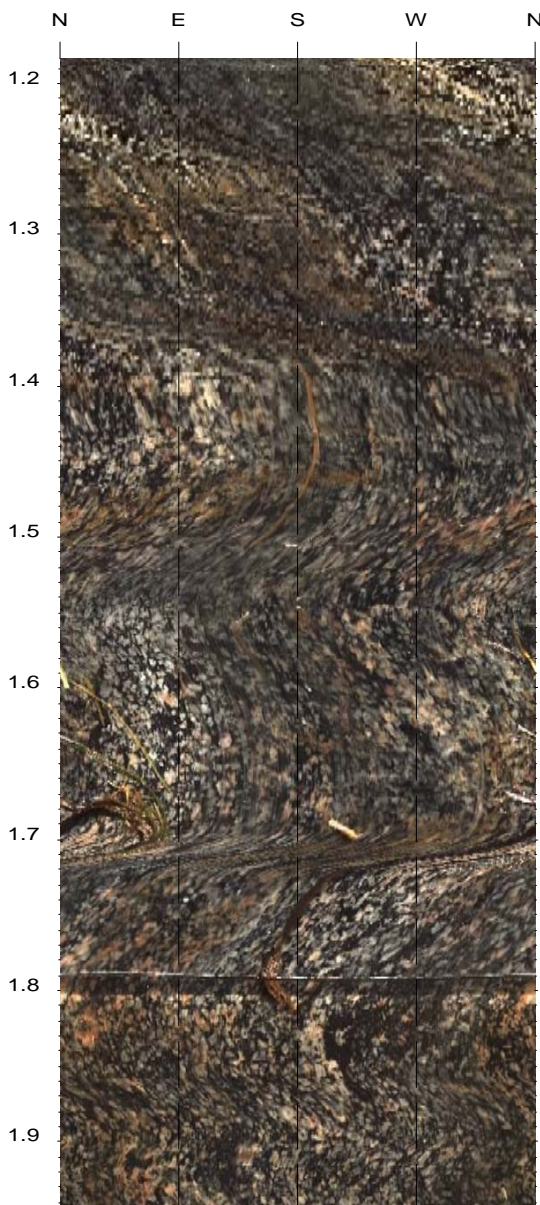
top of borehole.....

East:  
North:  
Elev:

North ref. is magnetic  
Depth units are metres  
Vertical scale: 1/5  
Horiz scale = vert scale

Zone from 10.0388 to 1.1827m  
Format: BHTV NESWN

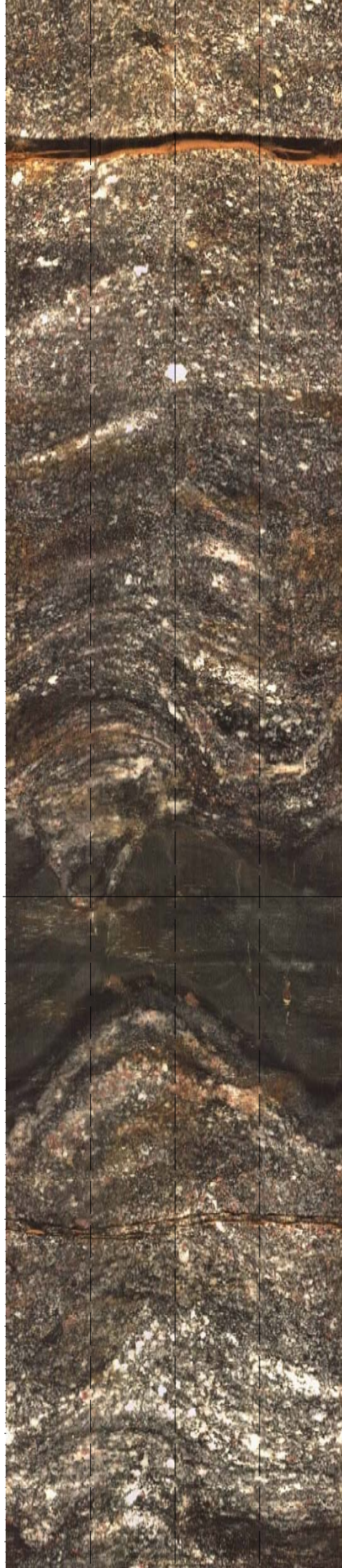
Borehole diam: 10.000cm  
data intervals.....  
Azimuth: 0.6667deg  
Depth: 0.0012m



2.8  
2.9  
3.0  
3.1  
3.2  
3.3  
3.4  
3.5  
3.6  
3.7  
3.8  
3.9  
4.0  
4.1



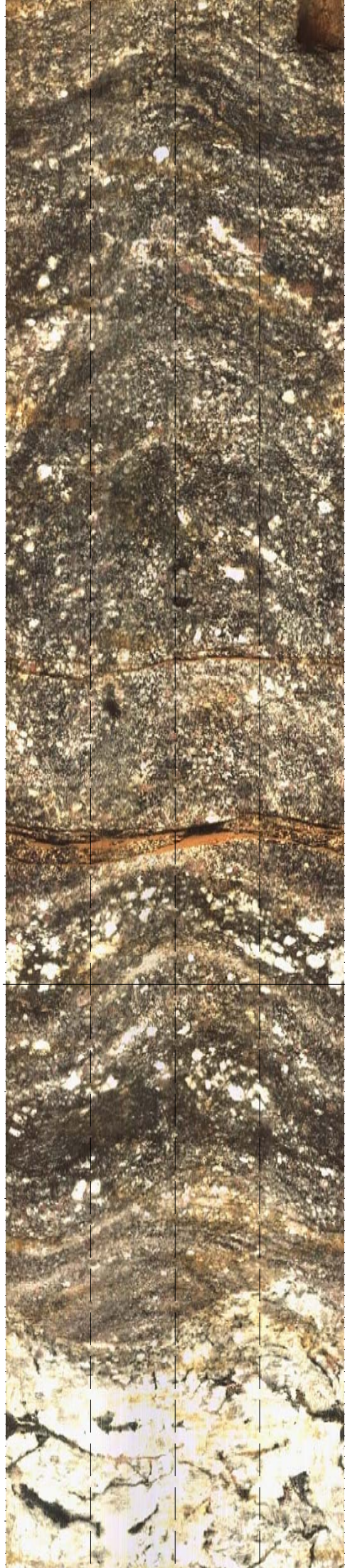
4.2  
4.3  
4.4  
4.5  
4.6  
4.7  
4.8  
4.9  
5.0  
5.1  
5.2  
5.3  
5.4  
5.5  
5.6

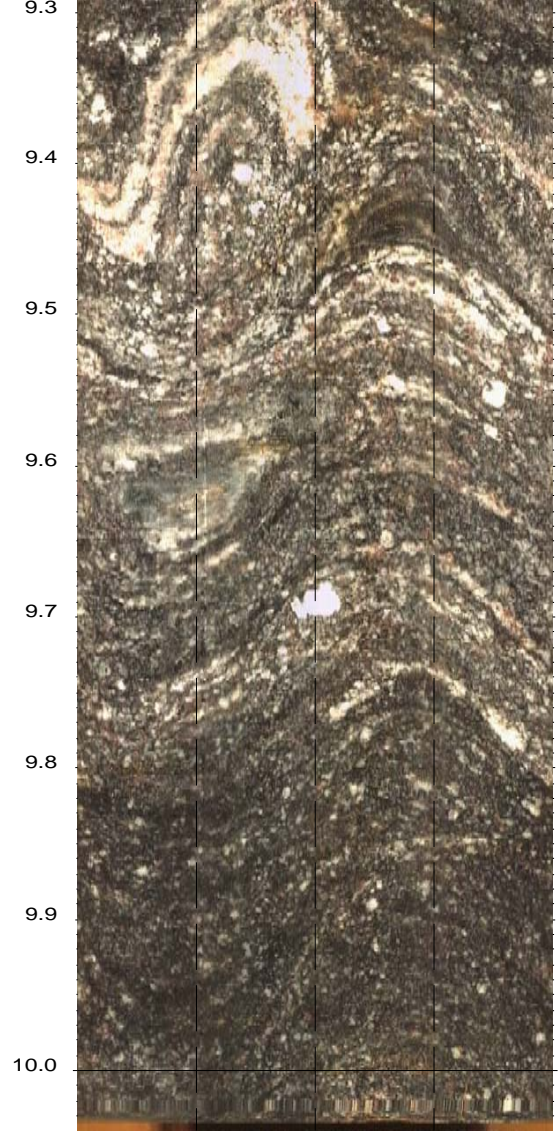
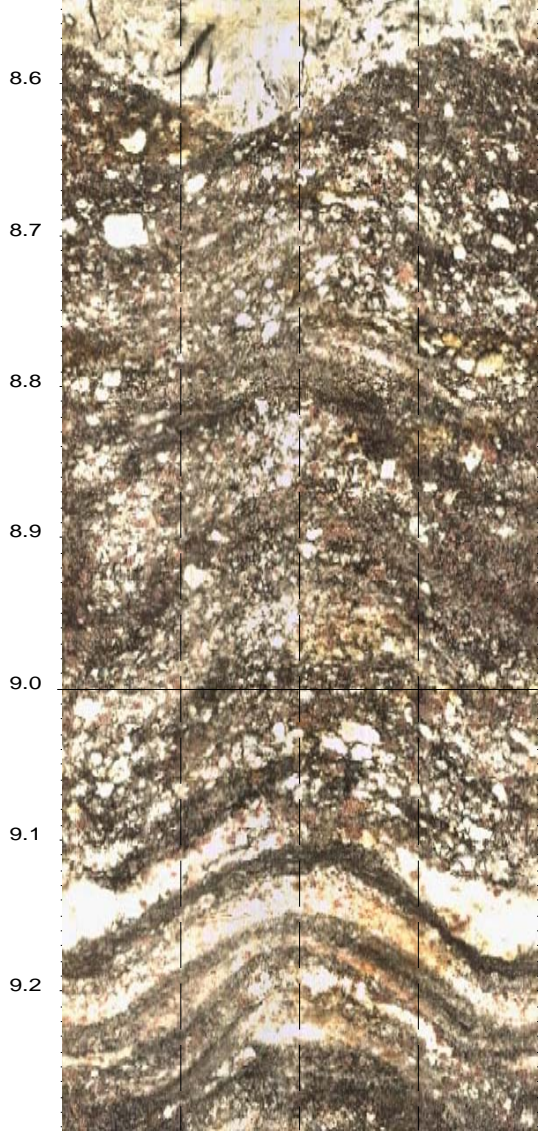


5.7  
5.8  
5.9  
6.0  
6.1  
6.2  
6.3  
6.4  
6.5  
6.6  
6.7  
6.8  
6.9  
7.0



7.1  
7.2  
7.3  
7.4  
7.5  
7.6  
7.7  
7.8  
7.9  
8.0  
8.1  
8.2  
8.3  
8.4  
8.5





# **TESTEMUNHO VIRTUAL**

UHE ITAOCARA

Borehole: SM-104

BARRAMENTO ILHA

top of borehole.....

East:

North:

Elev:

North ref. is magnetic

Depth units are metres

Vertical scale: 1/5

Zone from 10.039 to 1.183m

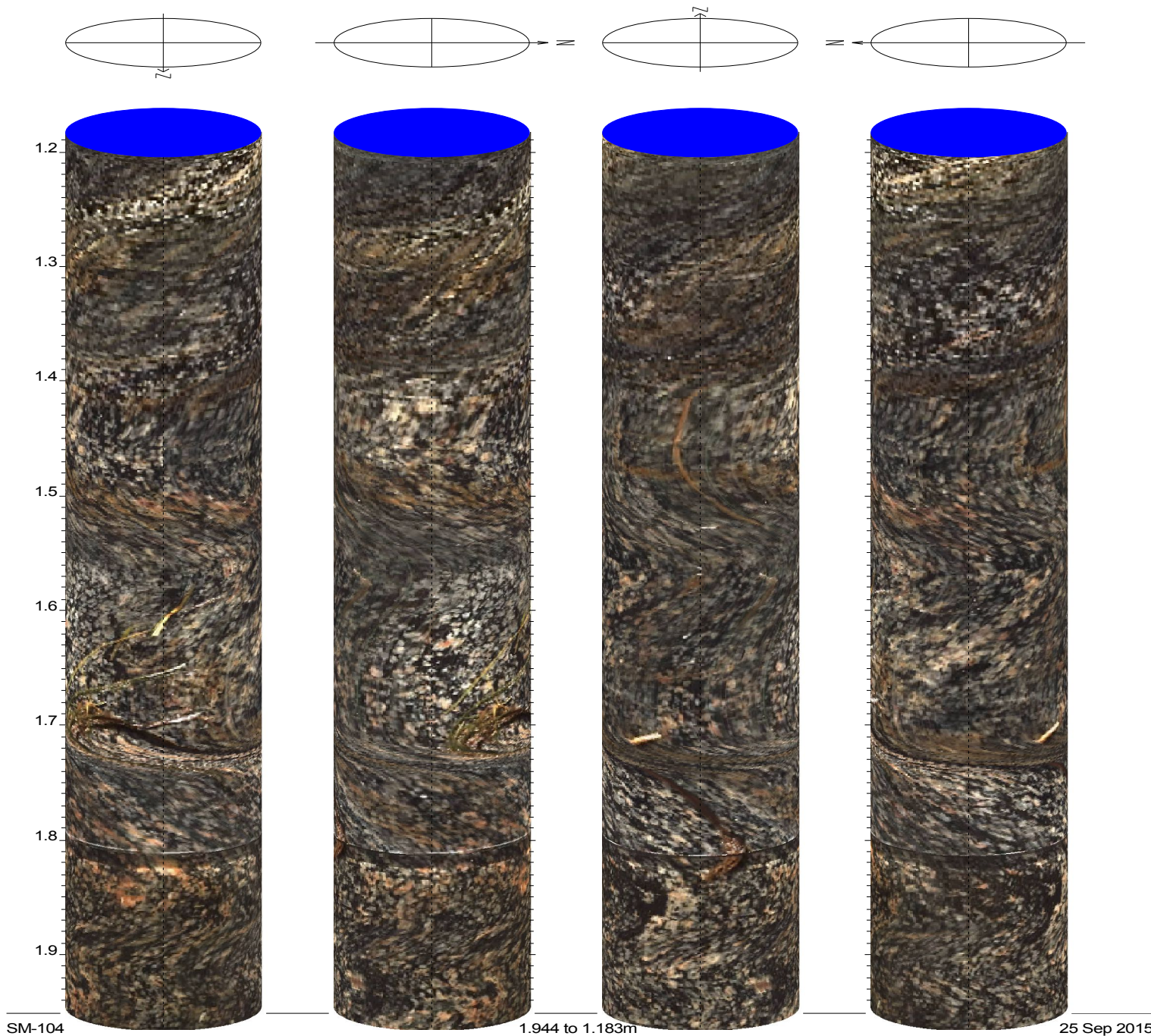
Cores oriented: N000 N090 N180 N270

Borehole diam: 10.000cm

data intervals .....

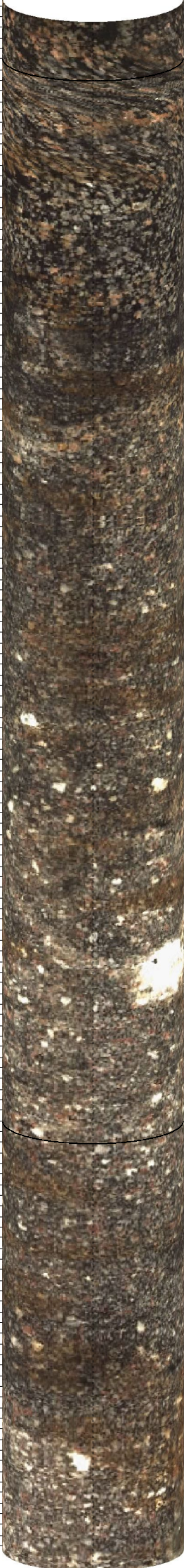
radial: 0.6667deg

axial: 0.0012m

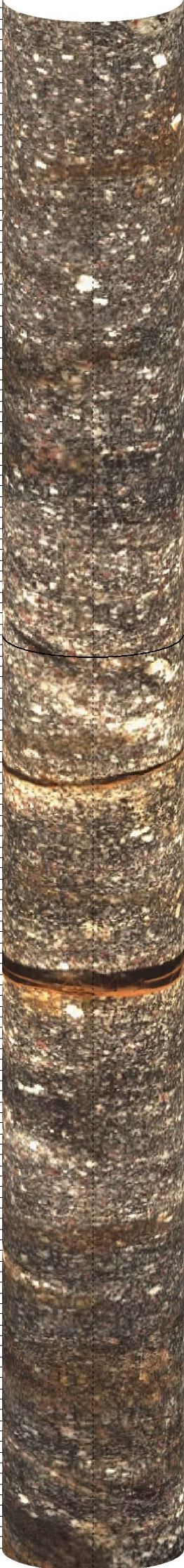




2.0  
2.1  
2.2  
2.3  
2.4  
2.5  
2.6  
2.7  
2.8  
2.9  
3.0  
3.1  
3.2  
3.3  
3.4



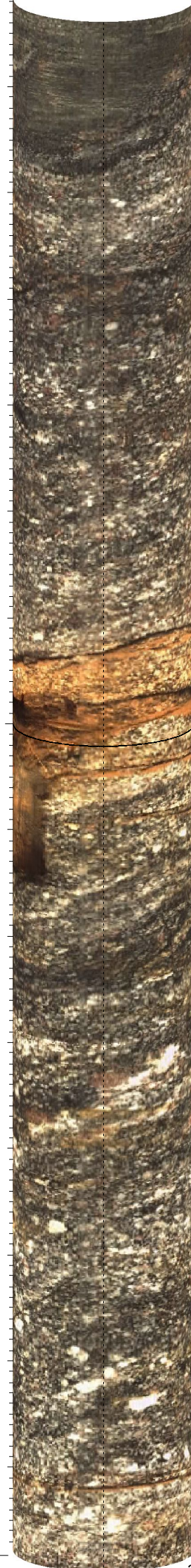
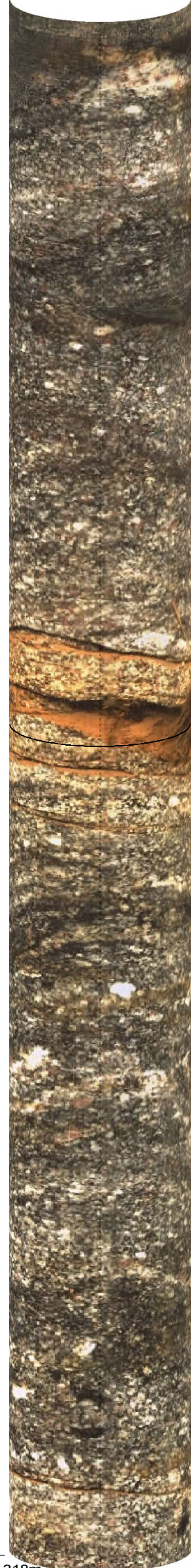
3.5  
3.6  
3.7  
3.8  
3.9  
4.0  
4.1  
4.2  
4.3  
4.4  
4.5  
4.6  
4.7  
4.8



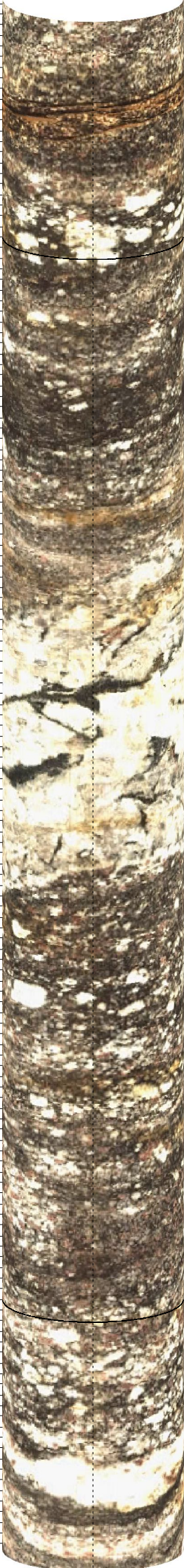
4.9  
5.0  
5.1  
5.2  
5.3  
5.4  
5.5  
5.6  
5.7  
5.8  
5.9  
6.0  
6.1  
6.2  
6.3



6.4  
6.5  
6.6  
6.7  
6.8  
6.9  
7.0  
7.1  
7.2  
7.3  
7.4  
7.5  
7.6  
7.7



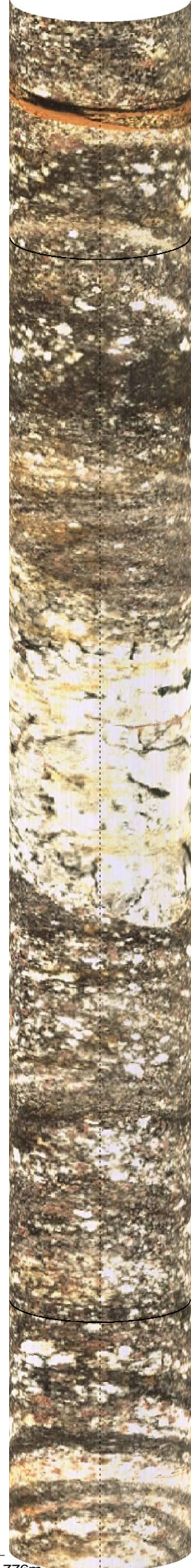
7.8  
7.9  
8.0  
8.1  
8.2  
8.3  
8.4  
8.5  
8.6  
8.7  
8.8  
8.9  
9.0  
9.1  
9.2



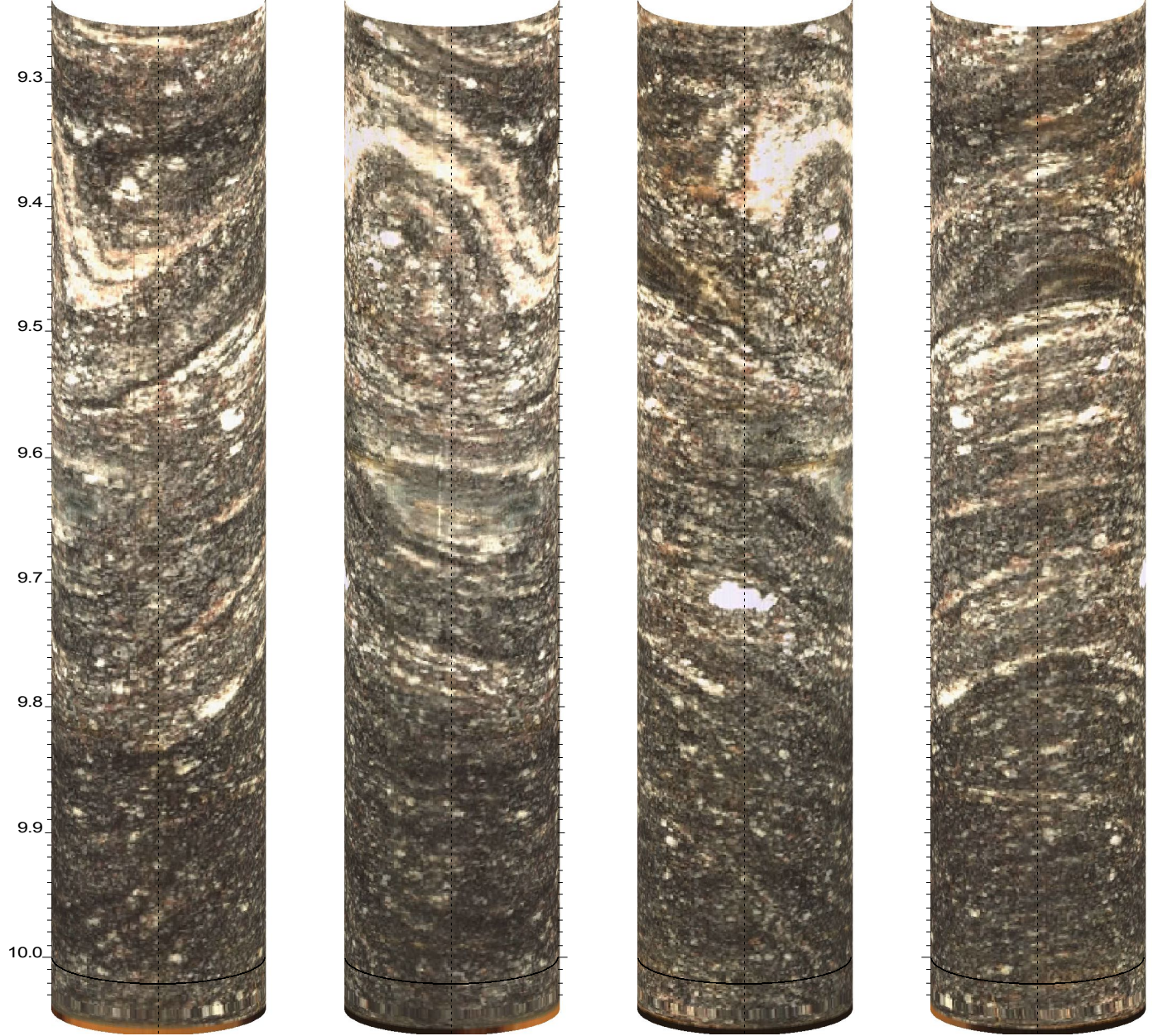
SM-104



9.234 to 7.776m



25 Sep 2015



**ATITUDES**  
**DESCONTINUIDADES**

UHE ITAOCARA

Borehole: SM-104

BARRAMENTO ILHA

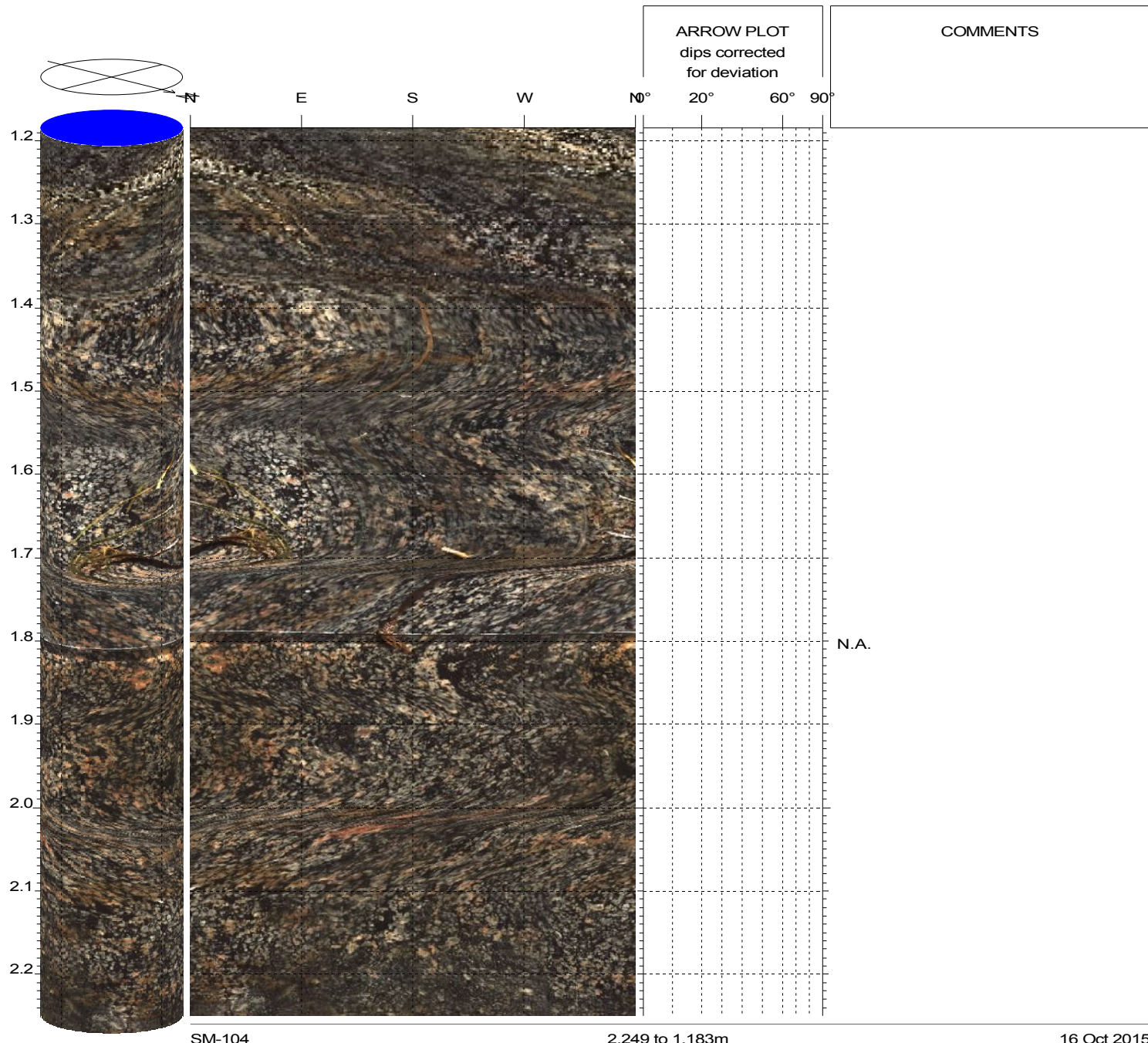
top of borehole.....

East:  
 North:  
 Elev:

North ref. is magnetic  
 Depth units are metres  
 Vertical scale: 1/7

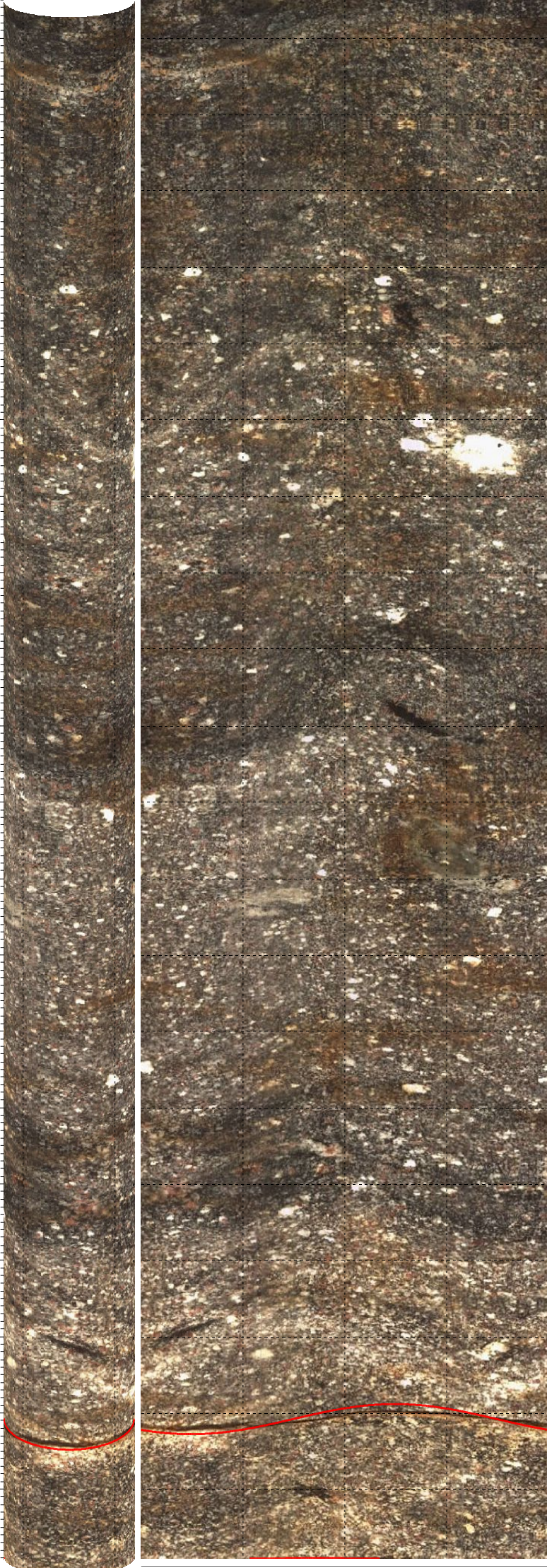
Zone from 10.039 to 1.183m  
 Format: BHTV-NESWN

Borehole diam: 17.000cm  
 Vertical = borehole-axis



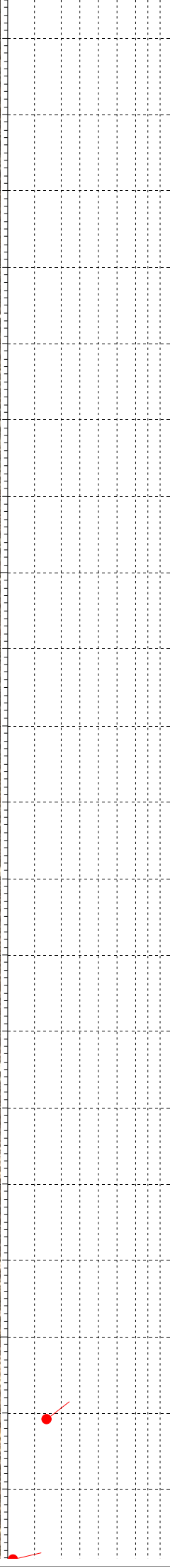


2.3  
2.4  
2.5  
2.6  
2.7  
2.8  
2.9  
3.0  
3.1  
3.2  
3.3  
3.4  
3.5  
3.6  
3.7  
3.8  
3.9  
4.0  
4.1  
4.2



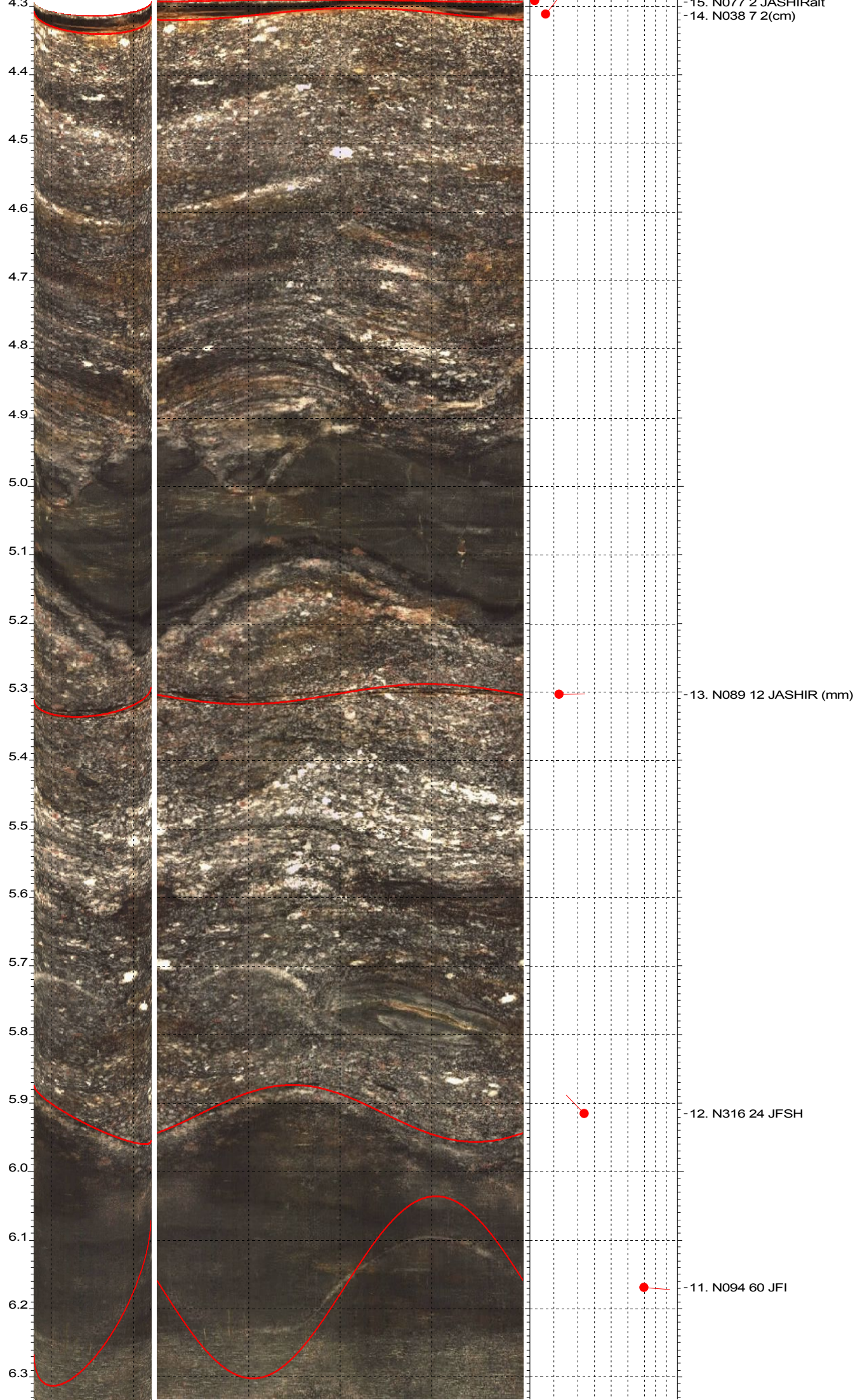
SM-104

4.290 to 2.249m



16. N052 15 JASHalt(mm)

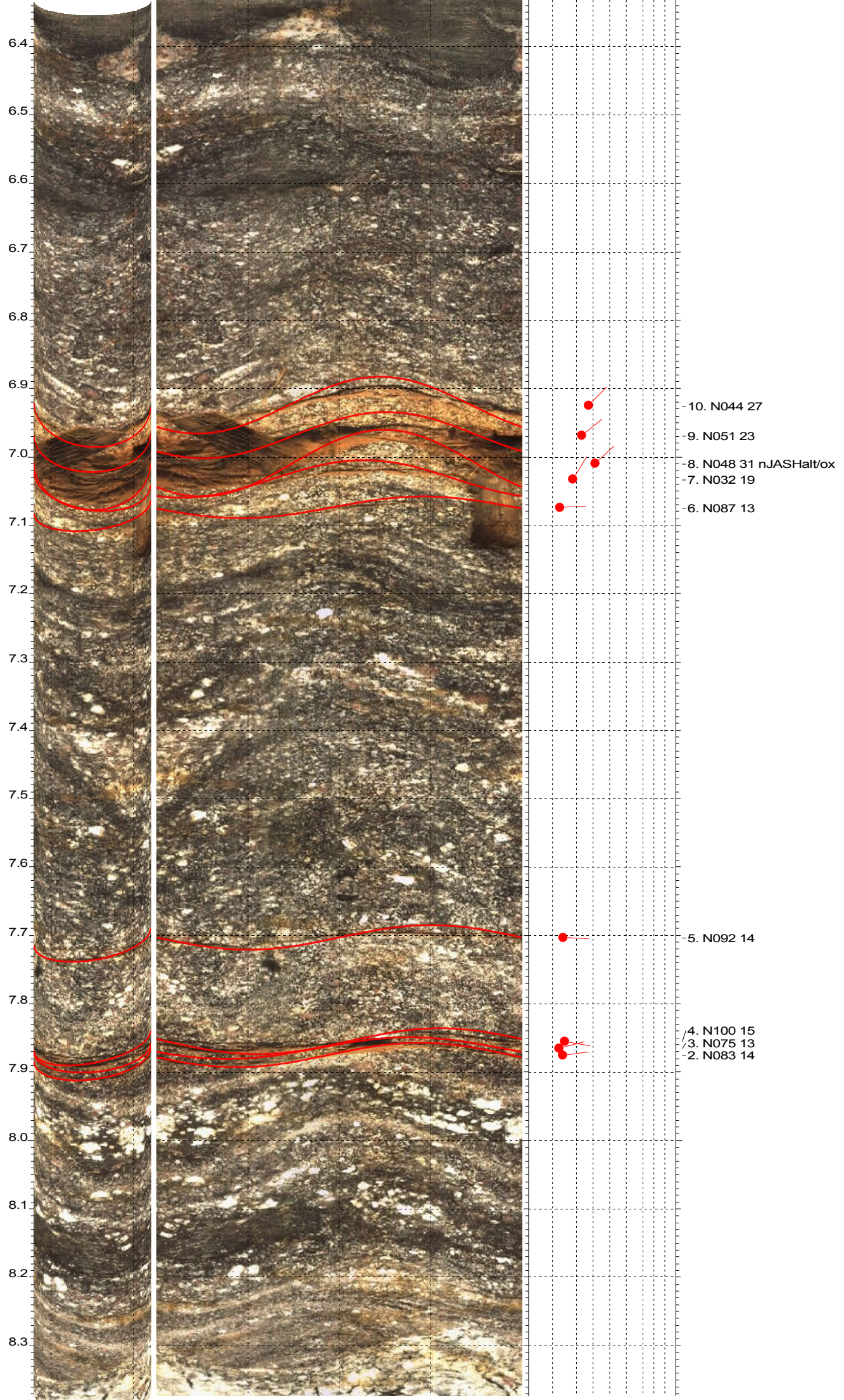
15. N077 2 JASHIRalt



SM-104

6.332 to 4.290m

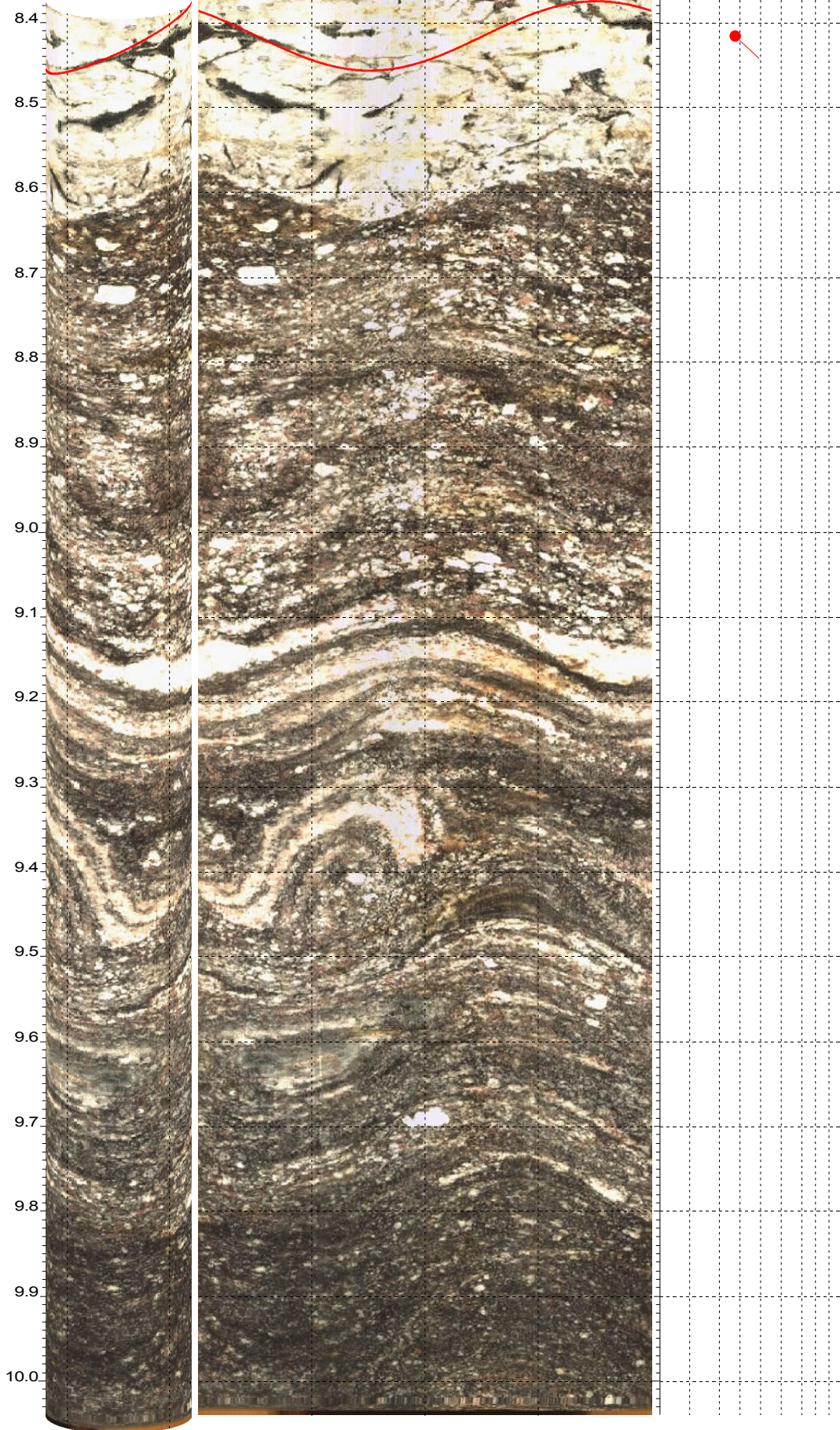
16 Oct 2015



SM-104

8.373 to 6.332m

16 Oct 2015



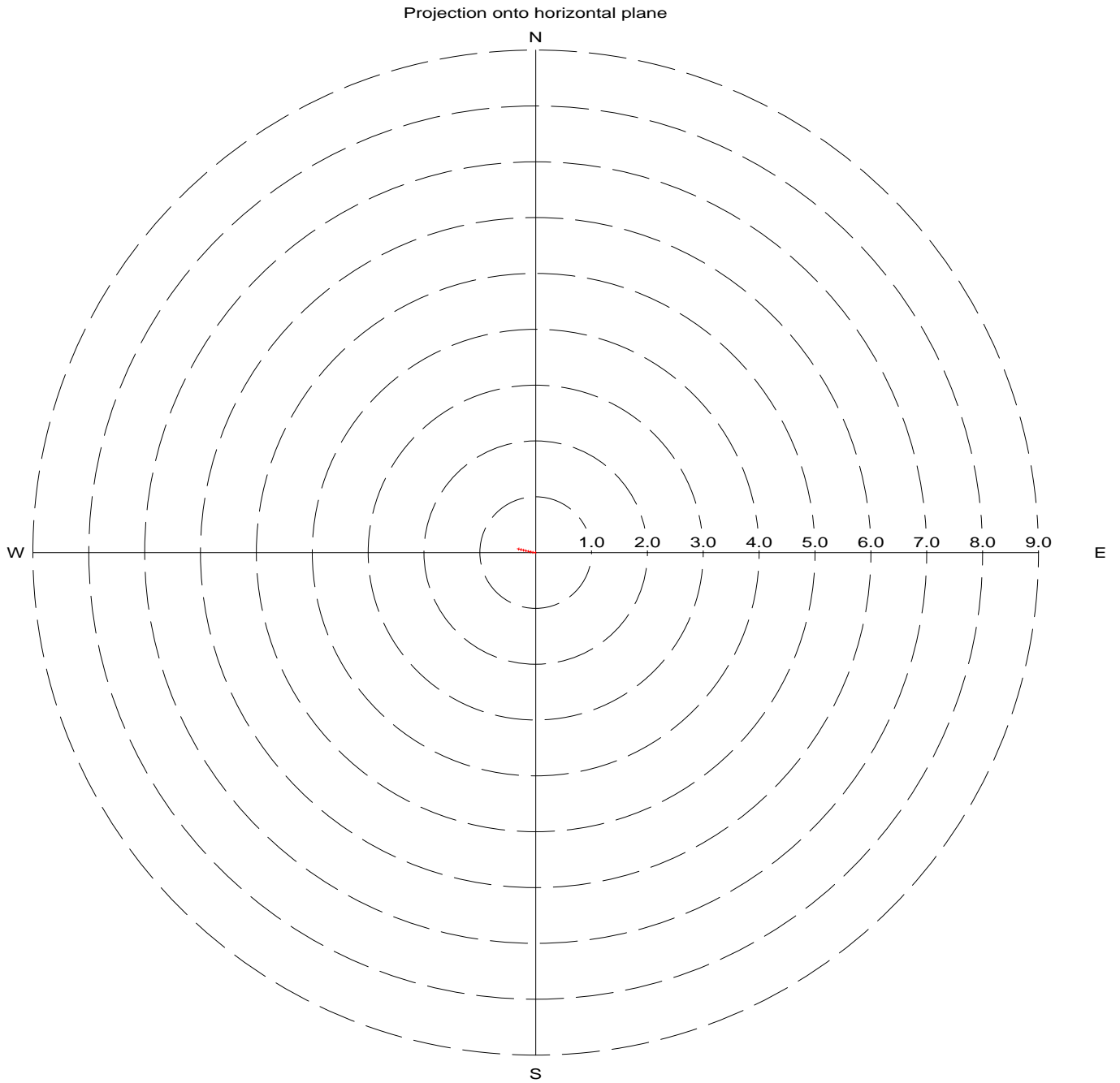
-1. N133 28 JFSH

## **DESVIO SONDAGEM**

Borehole: SM-104    Sonde: OPTV  
Zone from: 1.204 to 9.950m  
North ref is magnetic  
Mean deviation: 2.27 to N282.26  
End coordinates .....

- North: 0.072
- East : -0.339
- Down : 8.737

Azimuth of end: N281.95  
Distance start-end: 0.346m  
Distance marks every 1m  
25 Sep 2015

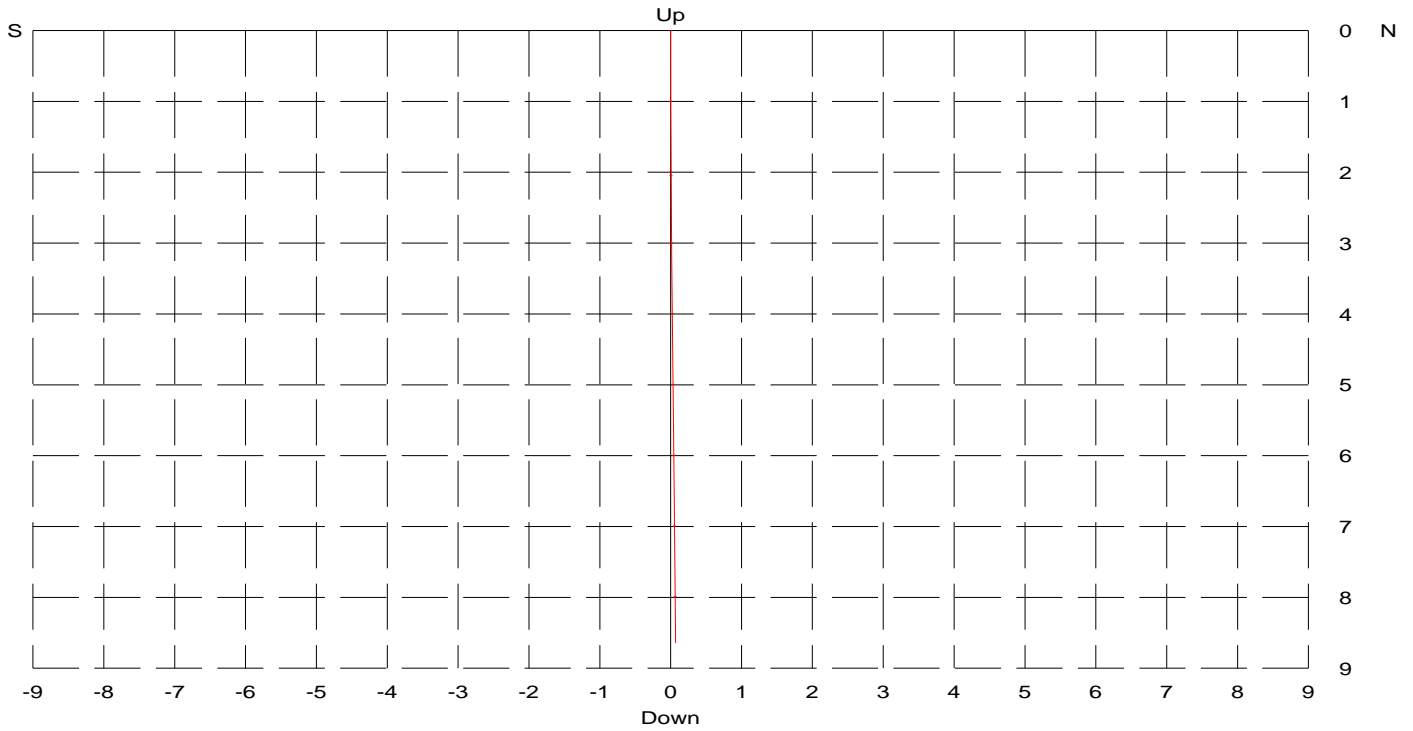


Borehole: SM-104    Sonde: OPTV  
Zone from: 1.204 to 9.950m  
North ref is magnetic  
Mean deviation: 2.27 to N282.26  
End coordinates .....

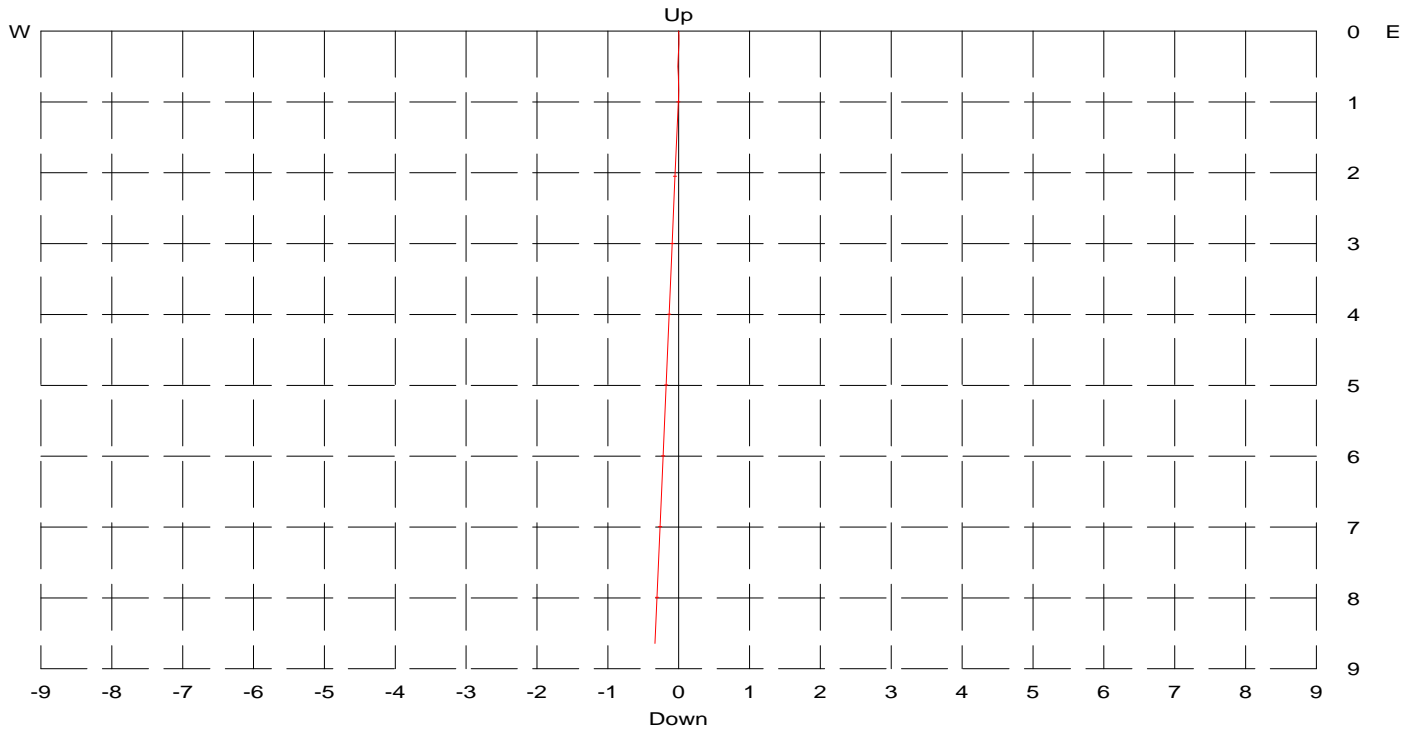
- North: 0.072
- East : -0.339
- Down : 8.737

Azimuth of end: N281.95  
Distance start-end: 0.346m  
Distance marks every 1m  
25 Sep 2015

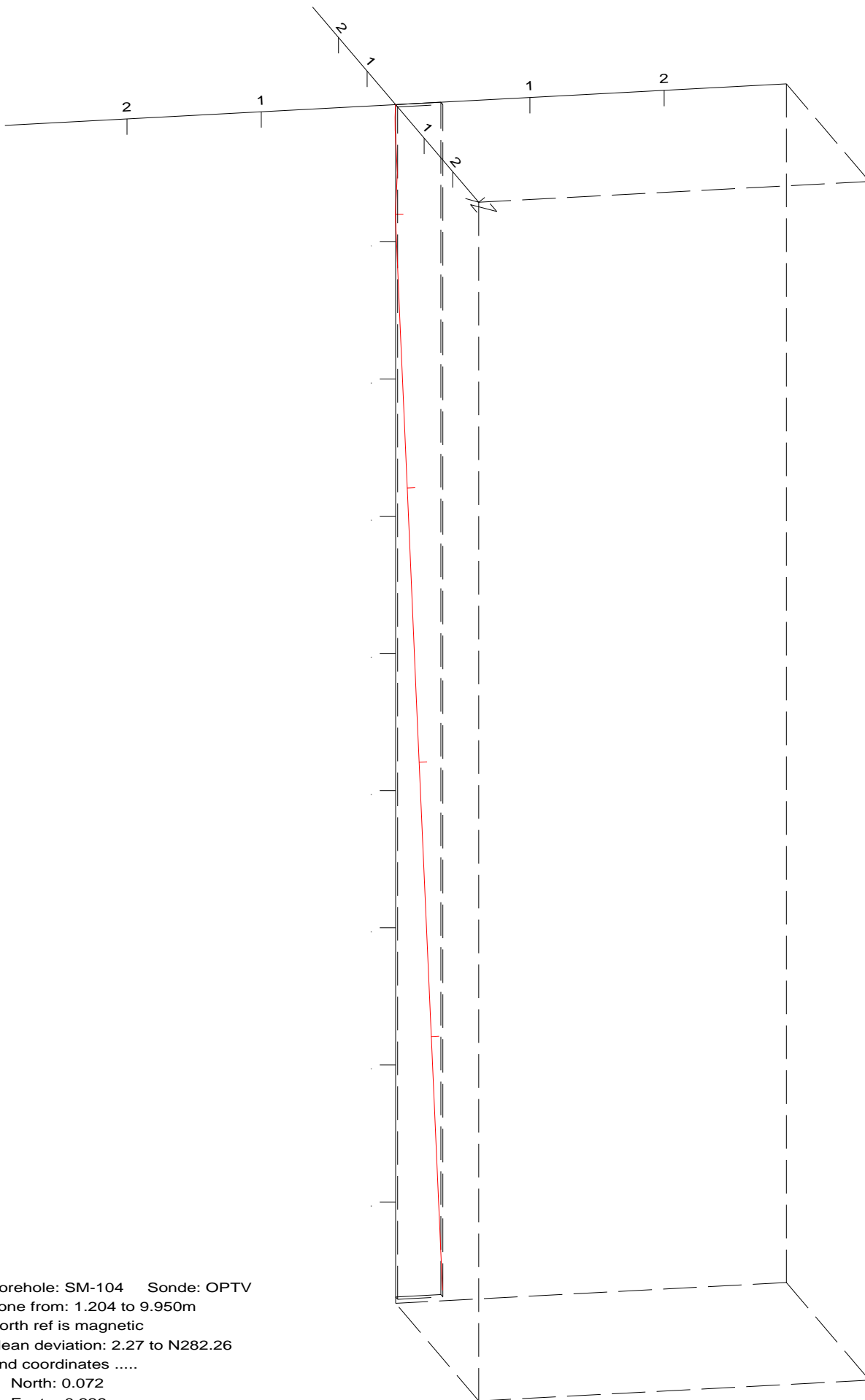
Projection onto vertical N-S plane



Projection onto vertical E-W plane



Deviated borehole in orthographic projection, viewed from N12



Borehole: SM-104    Sonde: OPTV  
Zone from: 1.204 to 9.950m  
North ref is magnetic  
Mean deviation: 2.27 to N282.26  
End coordinates .....

North: 0.072  
East : -0.339  
Down : 8.737  
Azimuth of end: N281.95  
Distance start-end: 0.346m  
Viewpoint: N12

25 Sep 2015