

MD - Rn do posto LIGHT UHE Ilha dos Pombos - C.F.

RN3002T

SAT91835

RÉGUA(136m)

RN3002V

106 m

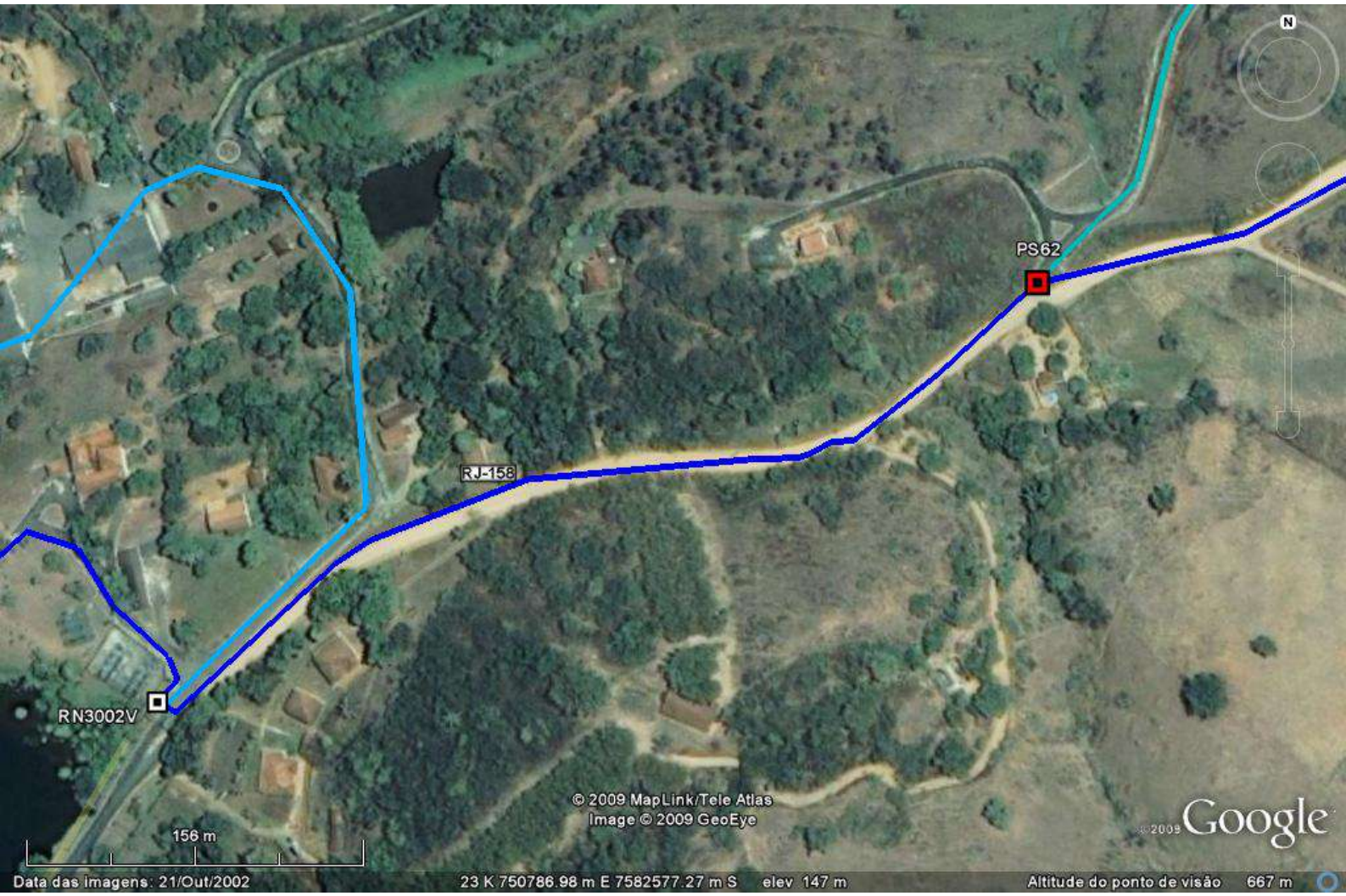
© 2009 MapLink/Tele Atlas  
Image © 2009 GeoEye

© 2009 Google

Data das imagens: 21/Out/2002

23 K 750228.68 m E 7582455.73 m S elev 135 m

Altitude do ponto de visão 497 m



RN3002V

RJ-158

PS62

156 m

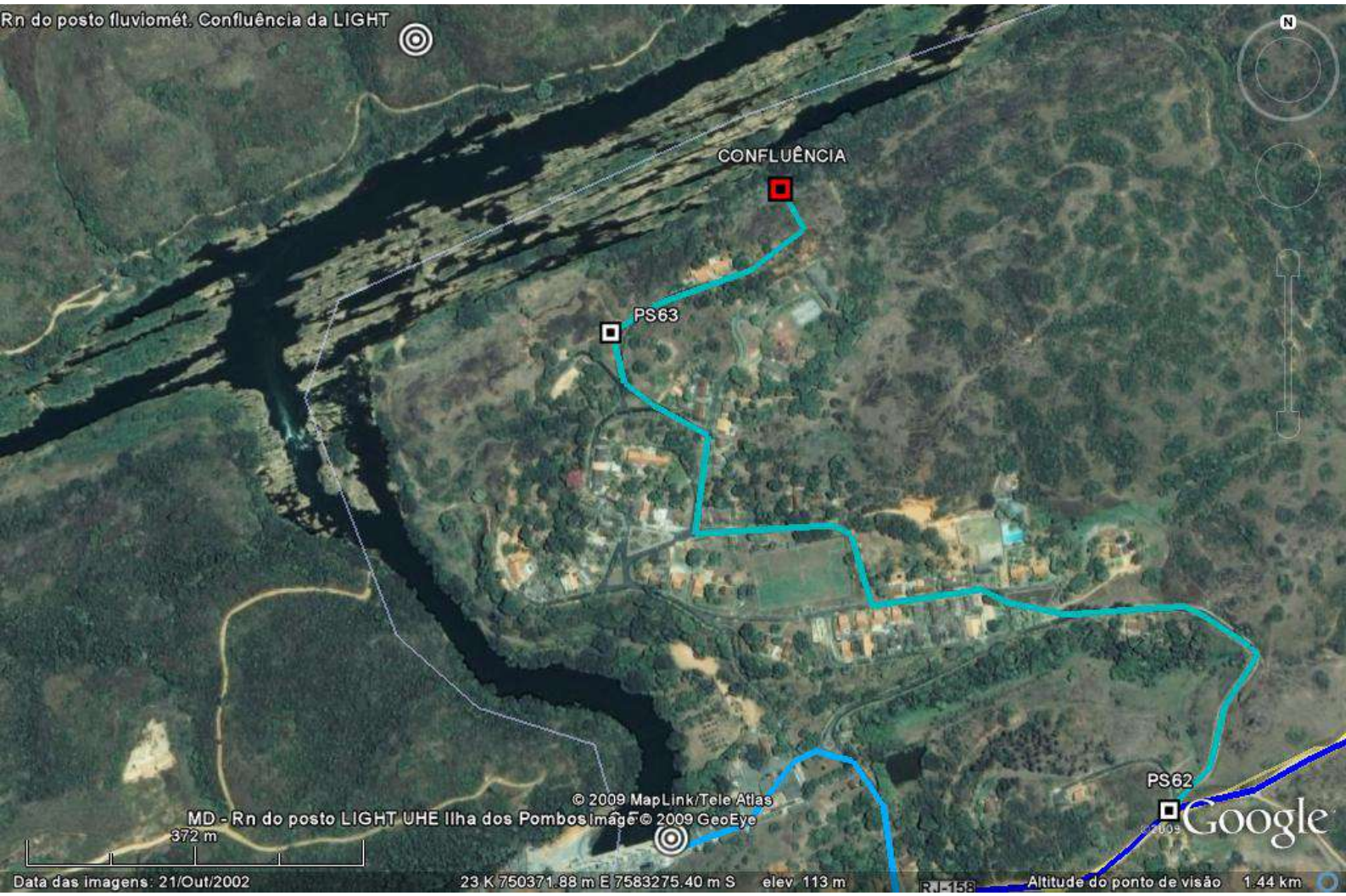
© 2009 MapLink/Tele Atlas  
Image © 2009 GeoEye

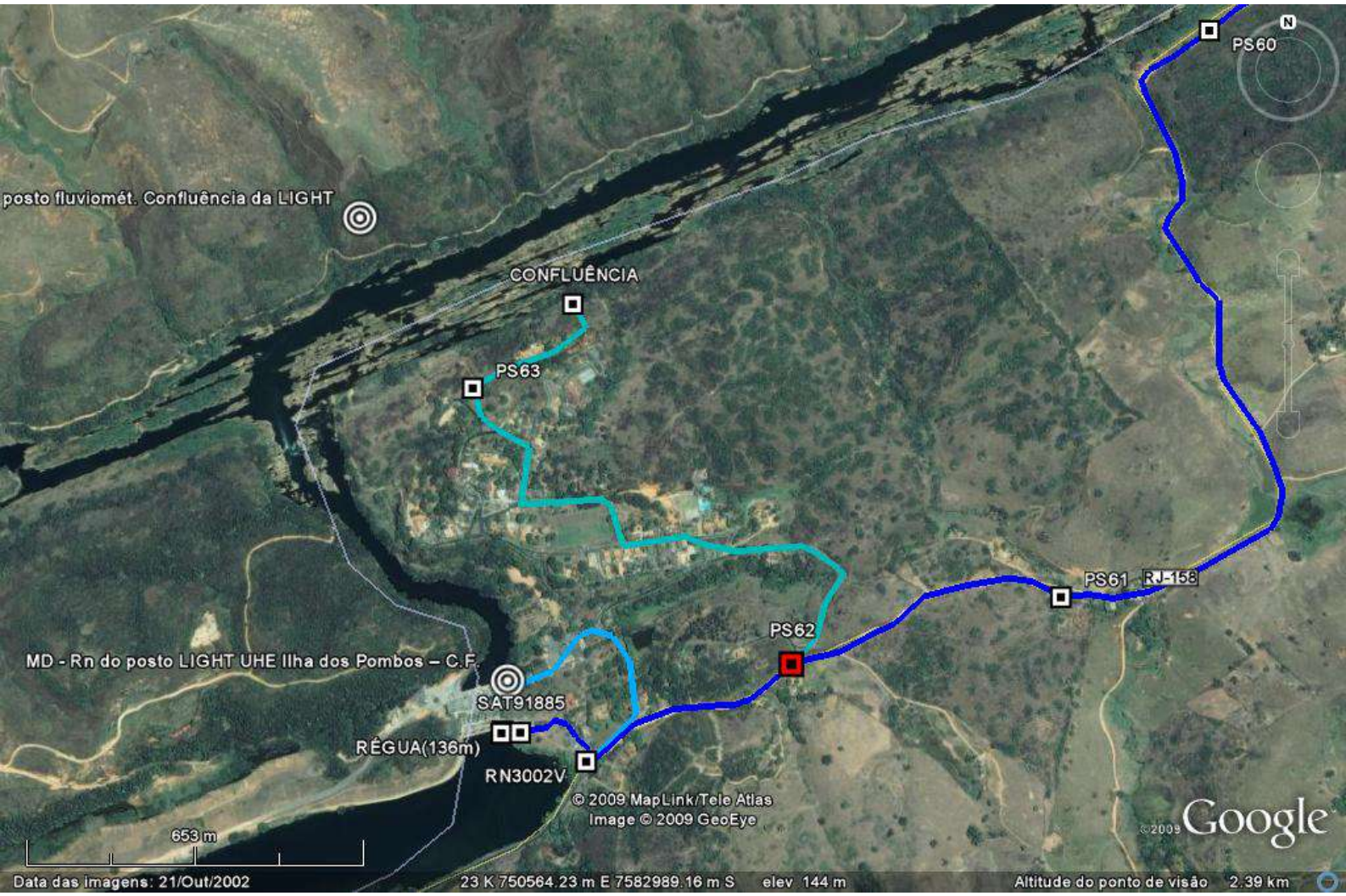
2009 Google

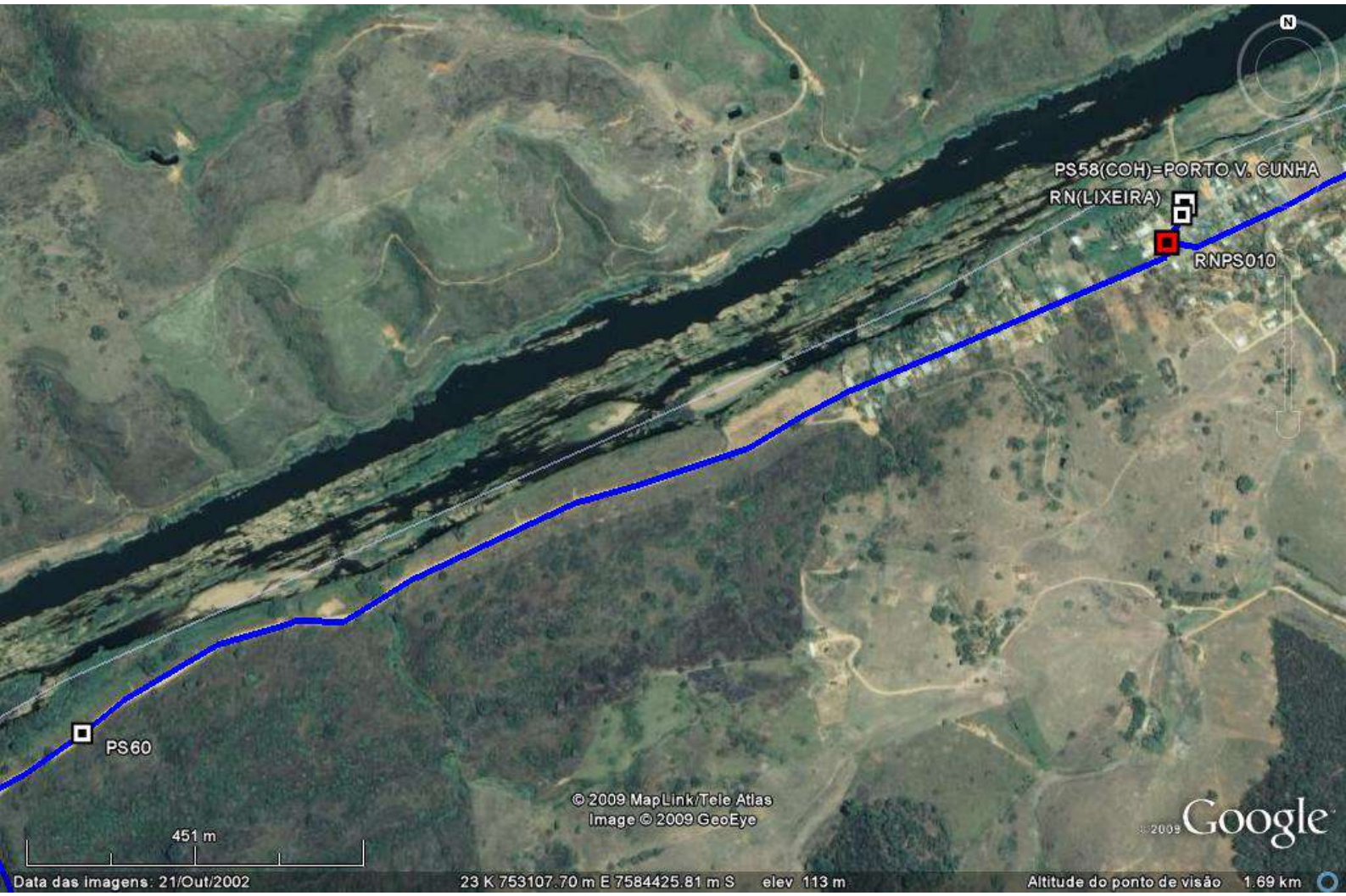
Data das imagens: 21/Out/2002

23 K 750786.98 m E 7582577.27 m S elev 147 m

Altitude do ponto de visão 667 m







PS58(COH)=PORTO V. CUNHA  
RN(LIXEIRA)

RNPS010

PS60

451 m

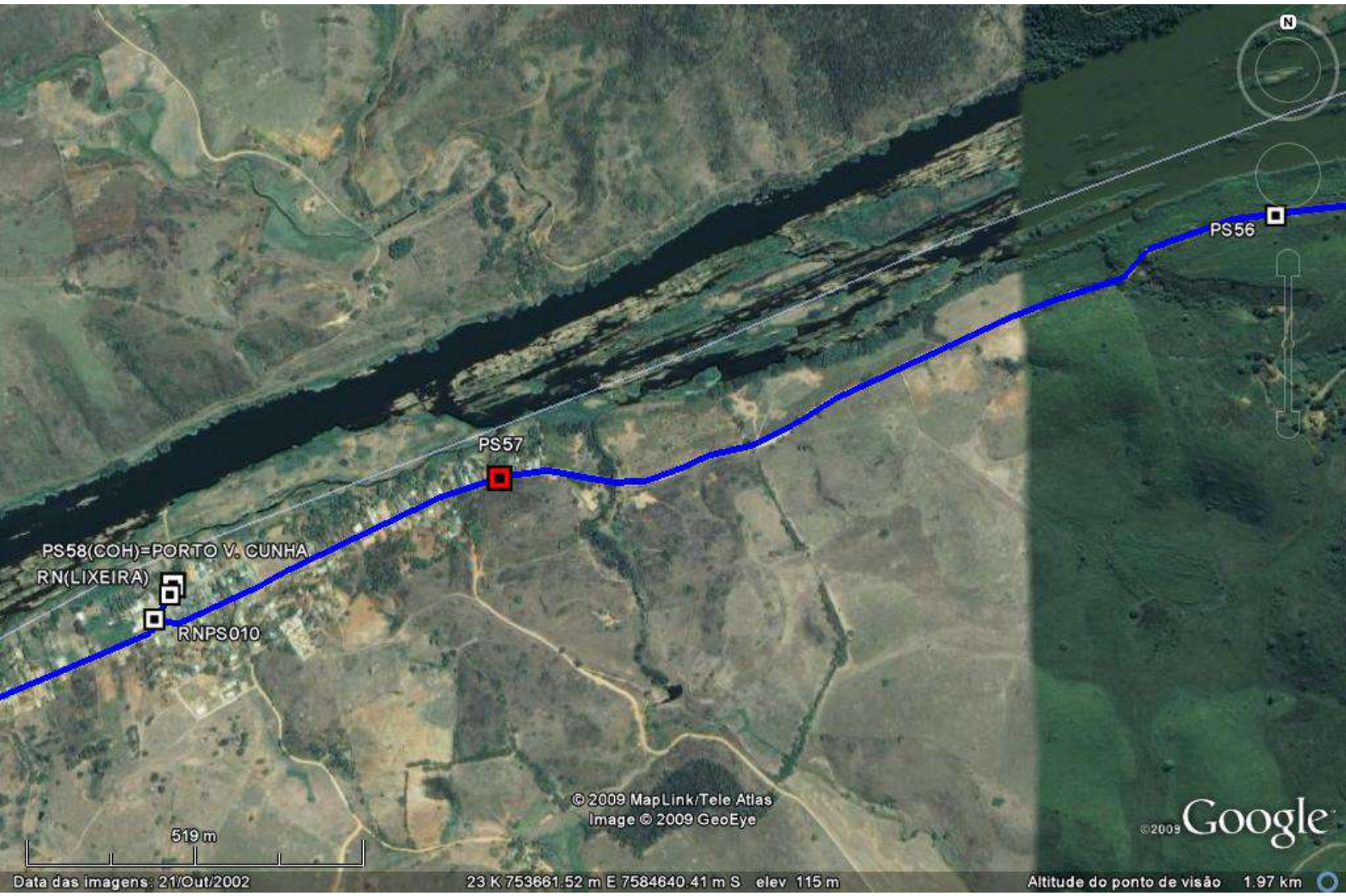
© 2009 MapLink/Tele Atlas  
Image © 2009 GeoEye

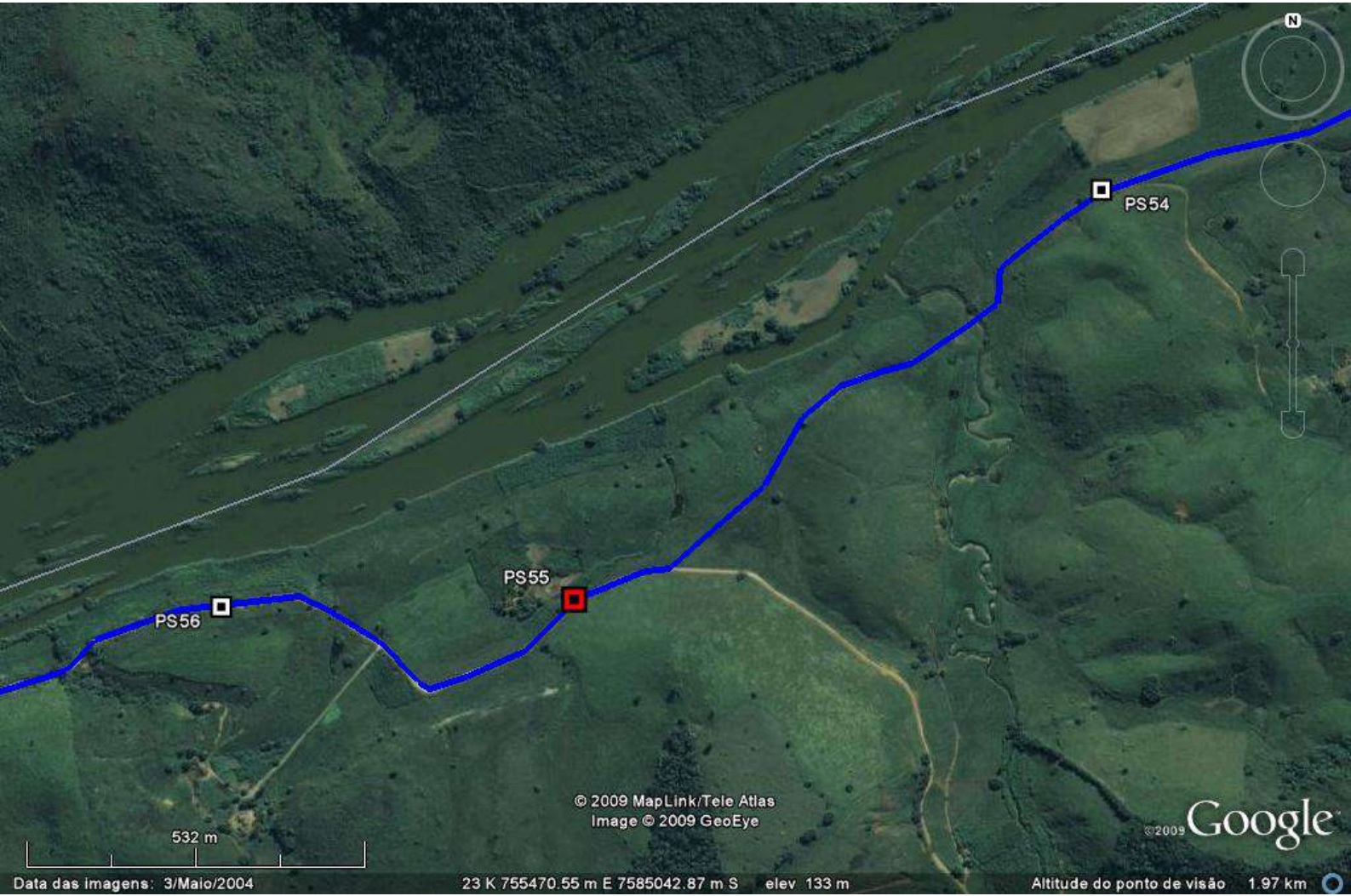
2009 Google

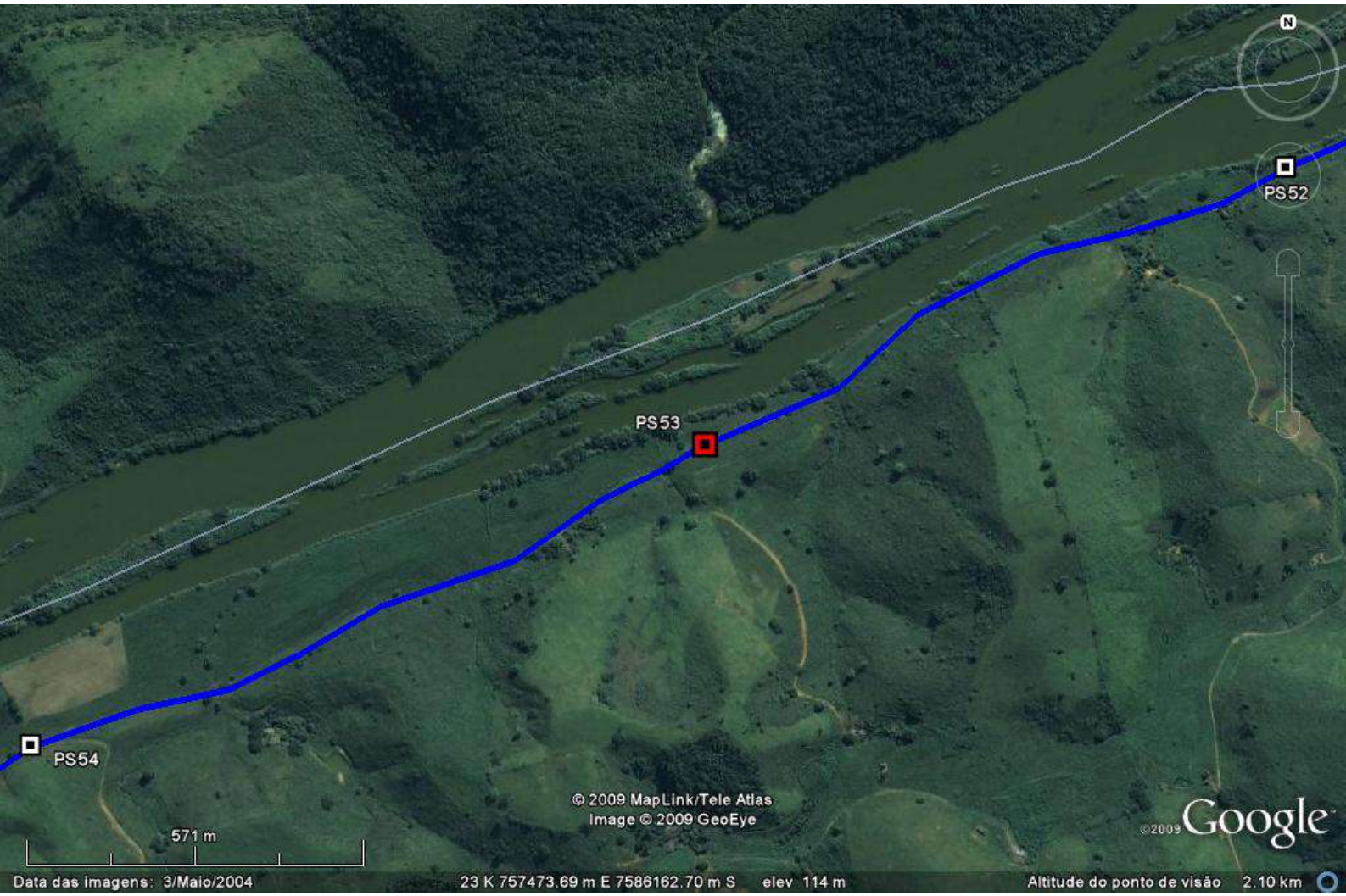
Data das imagens: 21/Out/2002

23 K 753107.70 m E 7584425.81 m S elev 113 m

Altitude do ponto de visão 1.69 km







© 2009 MapLink/Tele Atlas  
Image © 2009 GeoEye

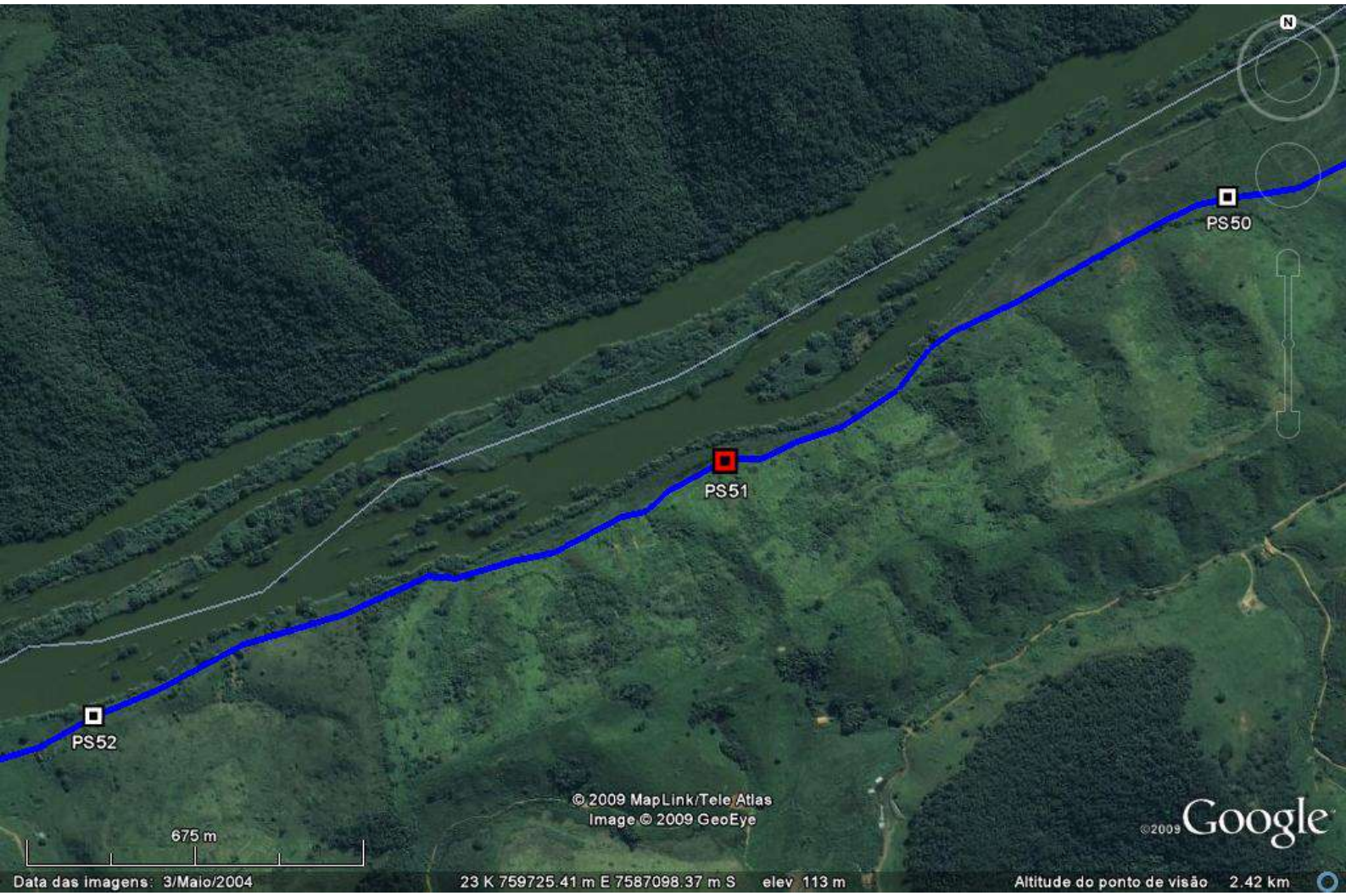
© 2009 Google

Data das imagens: 3/Maio/2004

23 K 757473.69 m E 7586162.70 m S elev 114 m

Altitude do ponto de visão 2.10 km





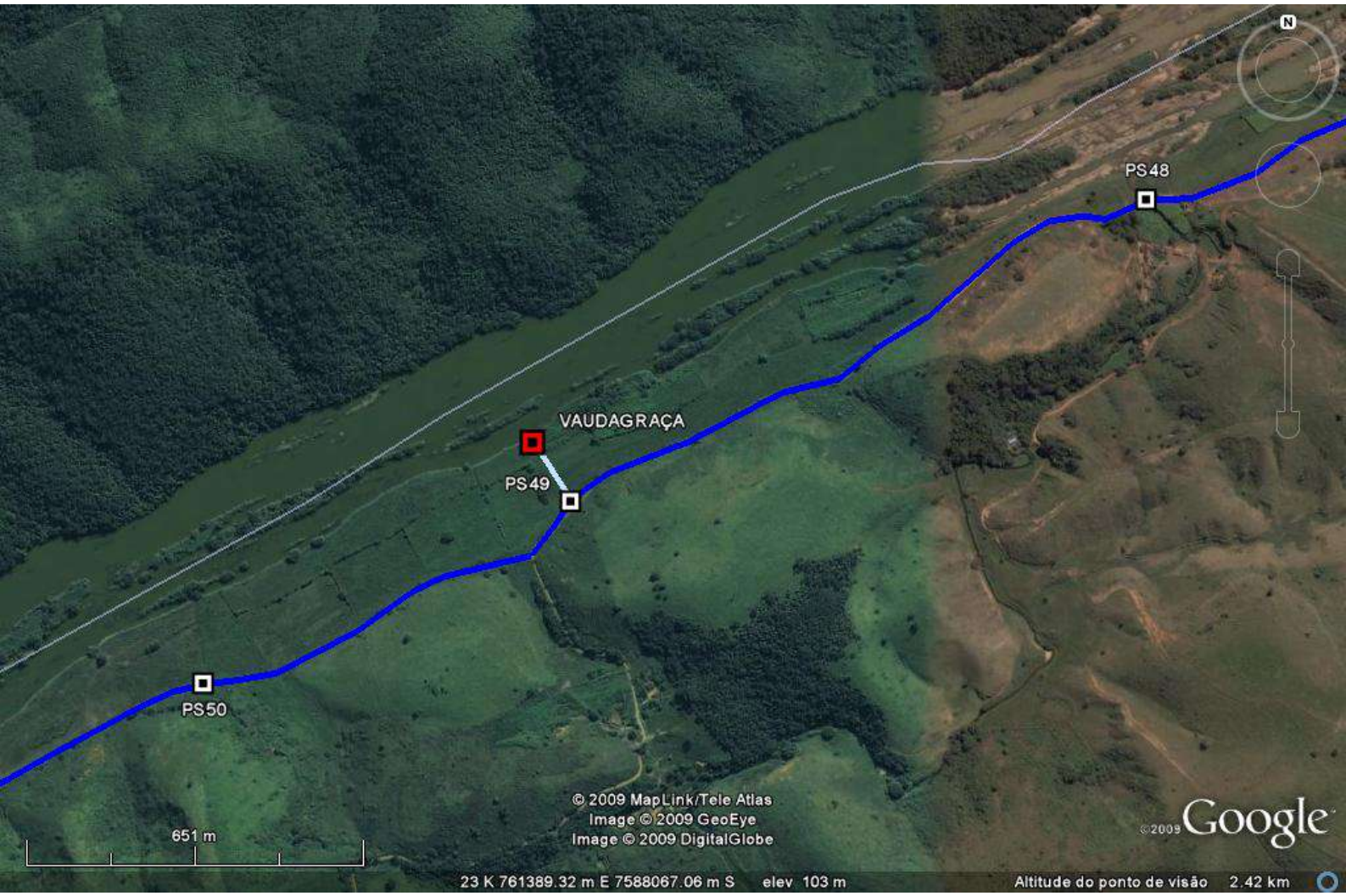
© 2009 MapLink/Tele Atlas  
Image © 2009 GeoEye

© 2009 Google

Data das imagens: 3/Maio/2004

23 K 759725.41 m E 7587098.37 m S elev 113 m

Altitude do ponto de visão 2.42 km



PS50

PS49

VAUDAGRAÇA

PS48

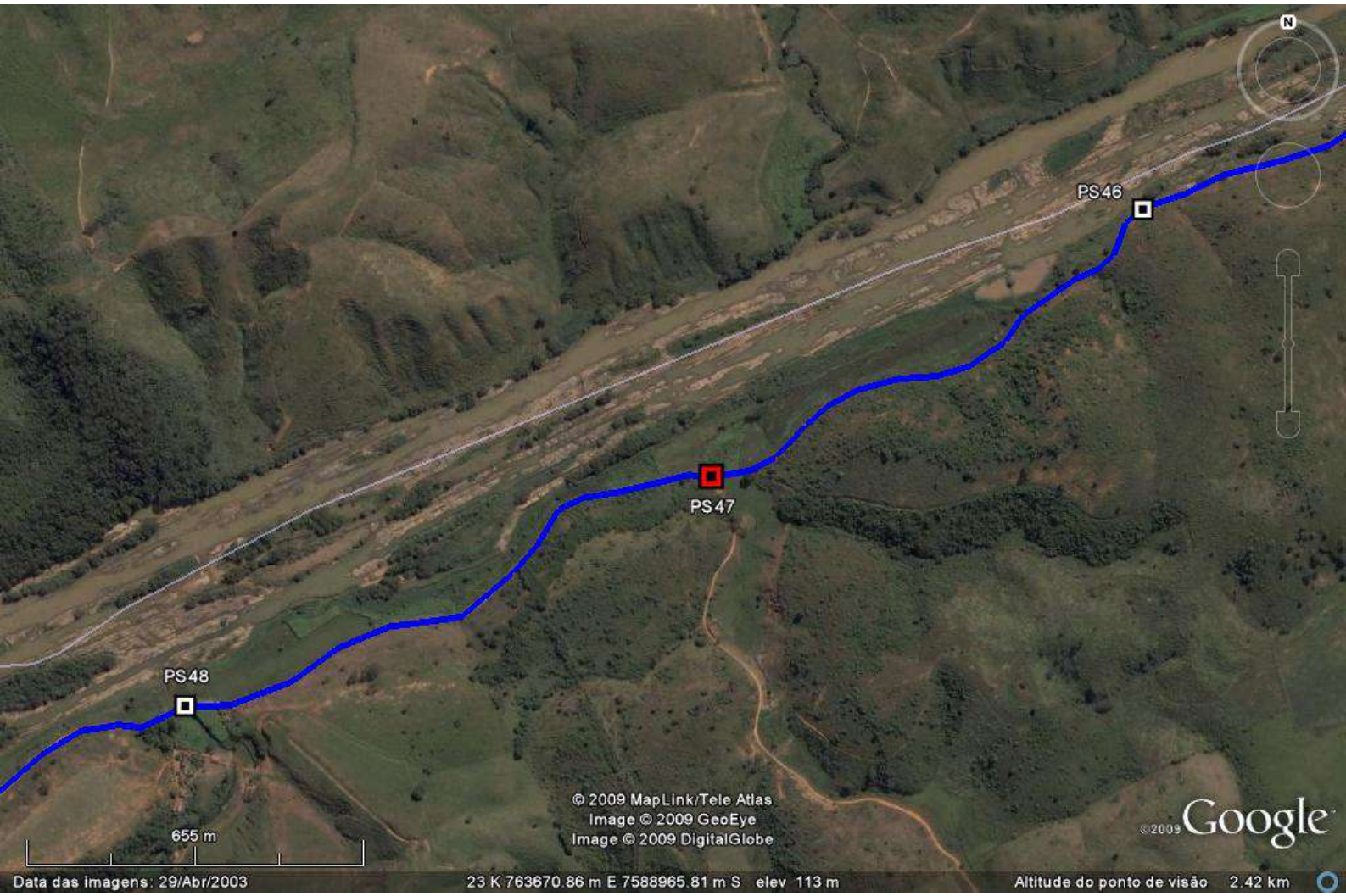
651 m

© 2009 MapLink/Tele Atlas  
Image © 2009 GeoEye  
Image © 2009 DigitalGlobe

© 2009 Google

23 K 761389.32 m E 7588067.06 m S elev 103 m

Altitude do ponto de visão 2.42 km



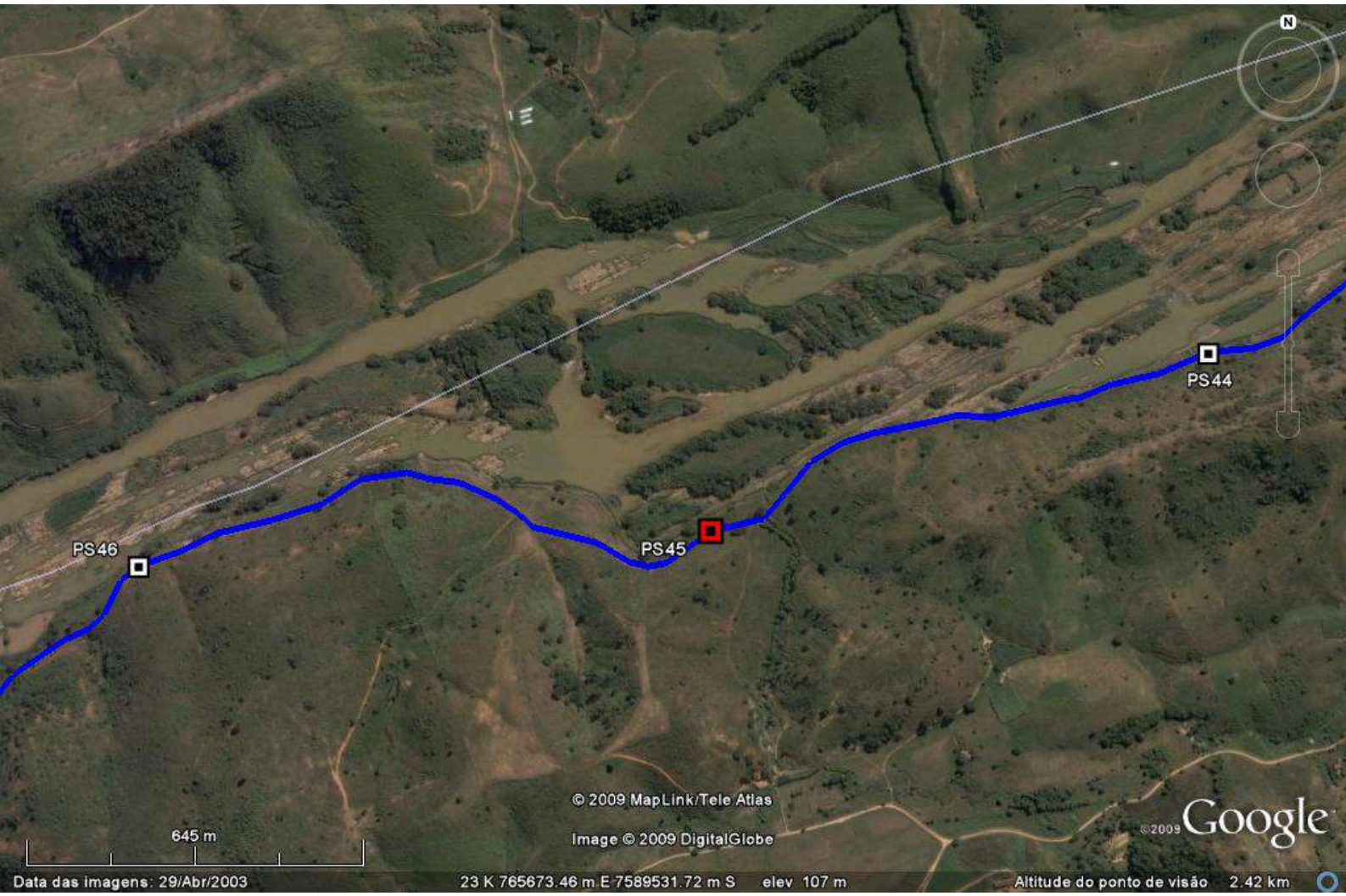
© 2009 MapLink/Tele Atlas  
Image © 2009 GeoEye  
Image © 2009 DigitalGlobe

© 2009 Google

Data das imagens: 29/Abr/2003

23 K 763670.86 m E 7588965.81 m S elev 113 m

Altitude do ponto de visão 2.42 km



PS46



PS45



PS44



645 m

© 2009 MapLink/Tele Atlas

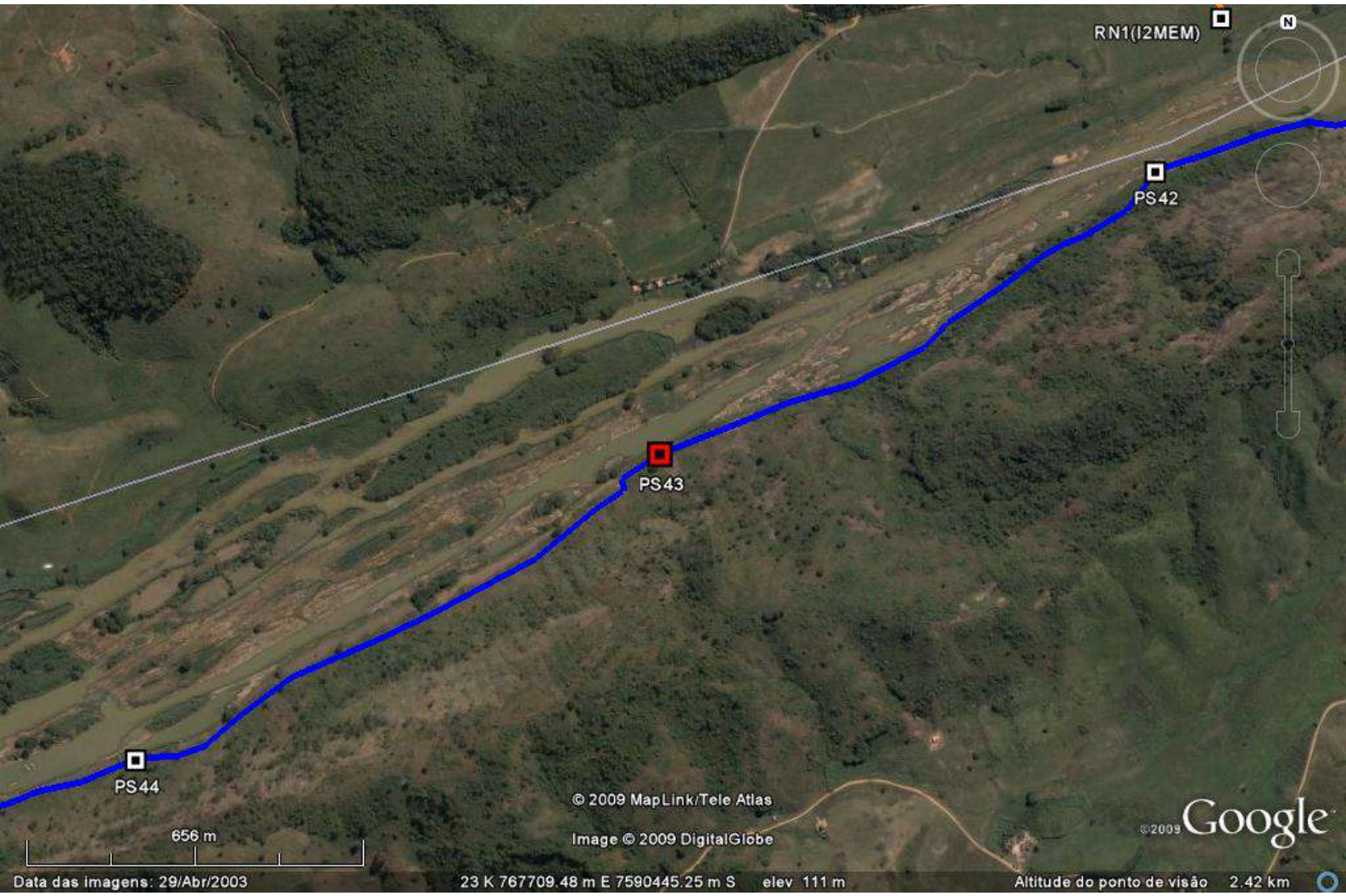
Image © 2009 DigitalGlobe

© 2009 Google

Data das imagens: 29/Abr/2003

23 K 765673.46 m E 7589531.72 m S elev 107 m

Altitude do ponto de visão 2.42 km



RN1(I2MEM)

PS42

PS43

PS44

656 m

© 2009 MapLink/Tele Atlas

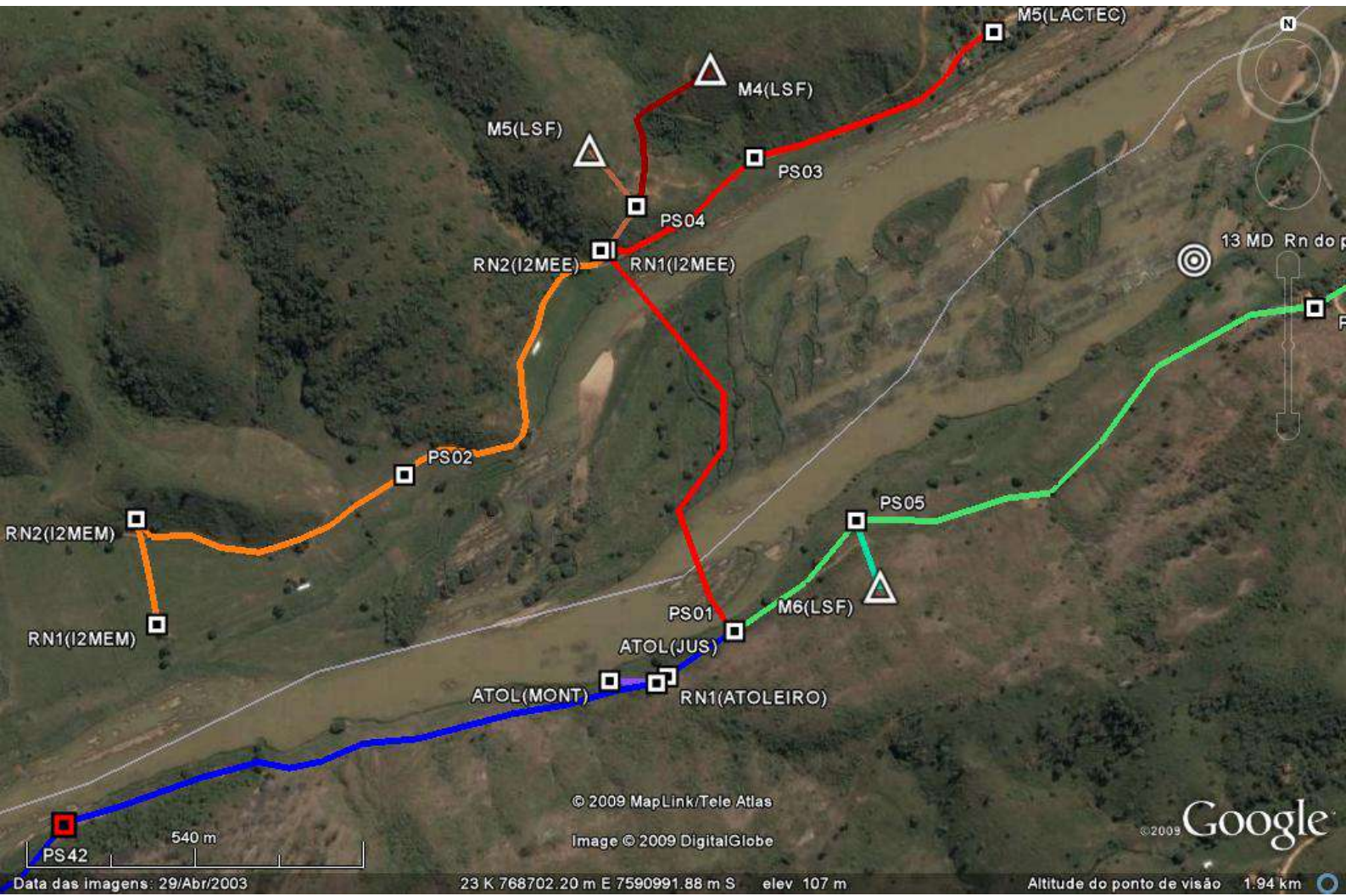
Image © 2009 DigitalGlobe

©2009 Google

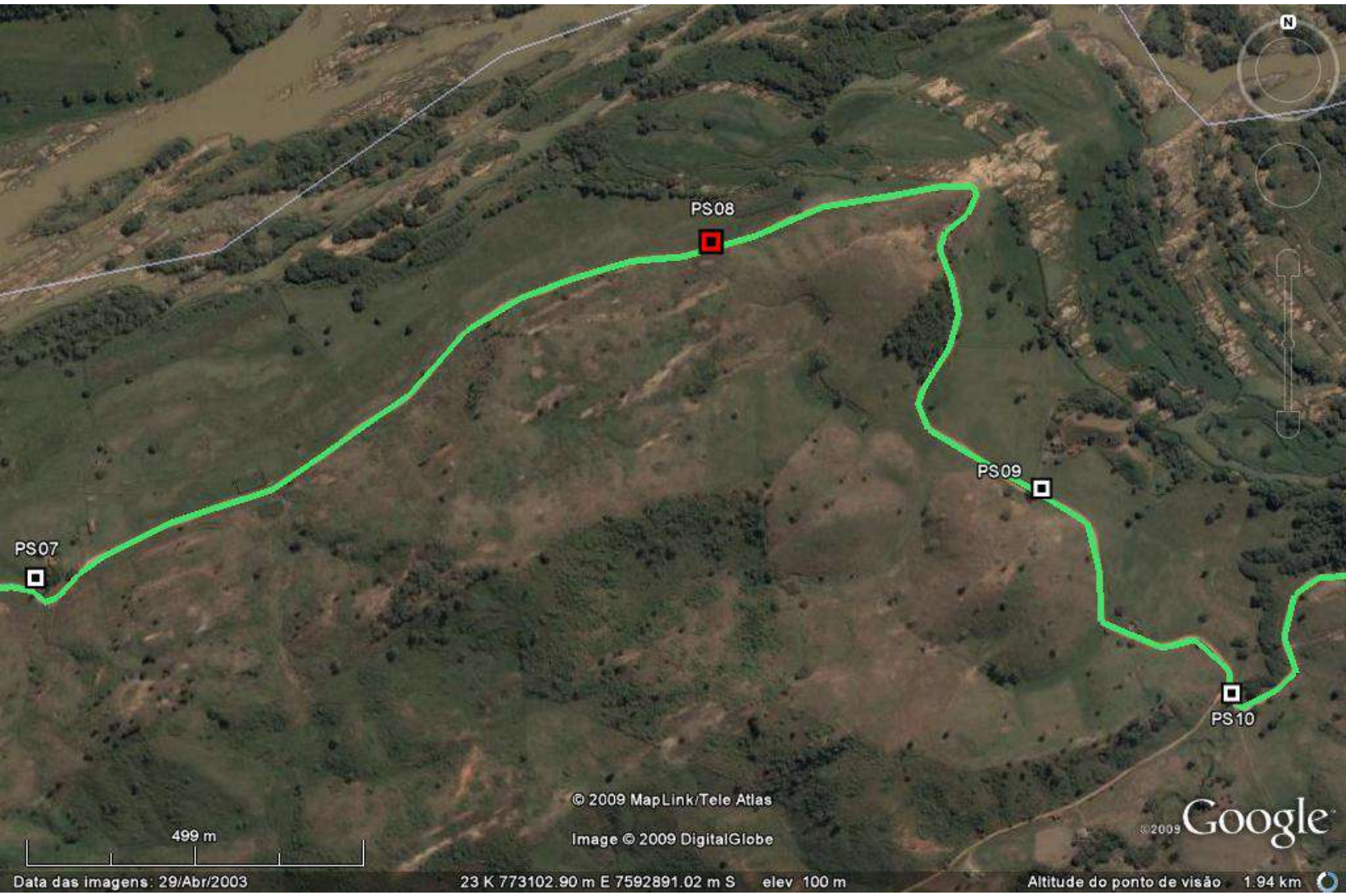
Data das imagens: 29/Abr/2003

23 K 767709.48 m E 7590445.25 m S elev 111 m

Altitude do ponto de visão 2.42 km







PS07

PS08

PS09

PS10

499 m

© 2009 MapLink/Tele Atlas

Image © 2009 DigitalGlobe

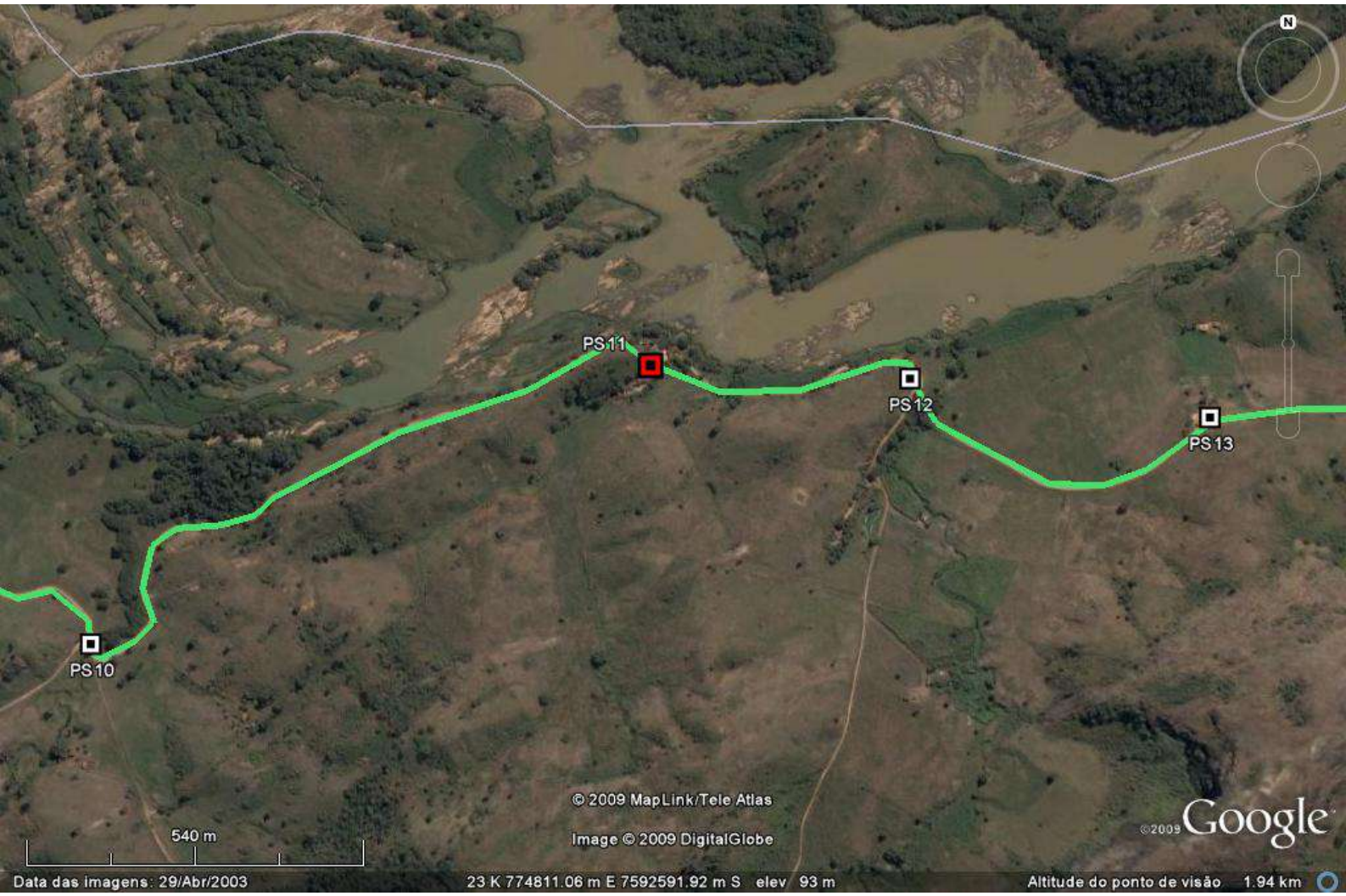
© 2009 Google

Data das imagens: 29/Abr/2003

23 K 773102.90 m E 7592891.02 m S elev 100 m

Altitude do ponto de visão 1.94 km





PS11



PS12



PS13



PS10



540 m

© 2009 MapLink/Tele Atlas

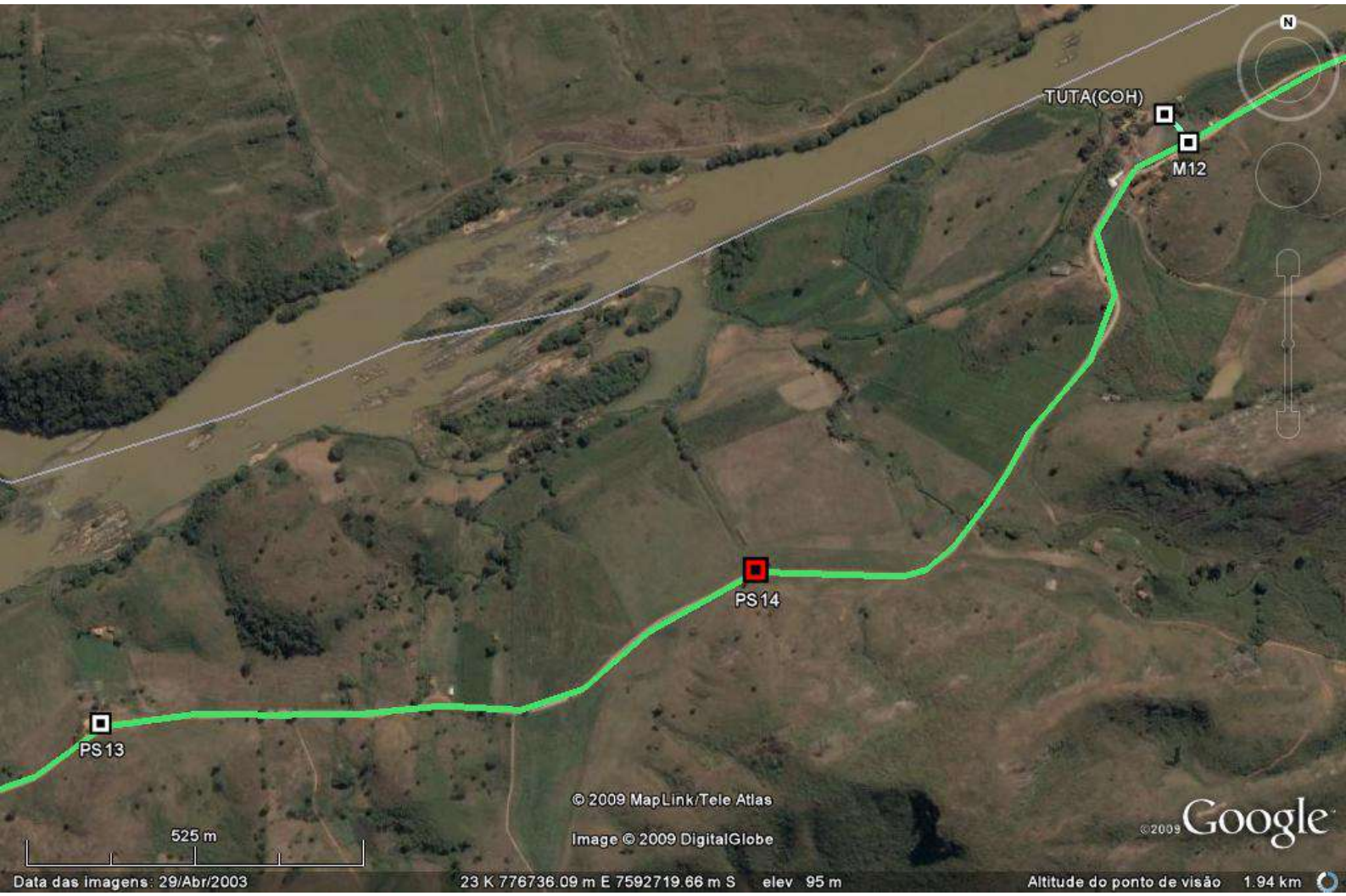
Image © 2009 DigitalGlobe

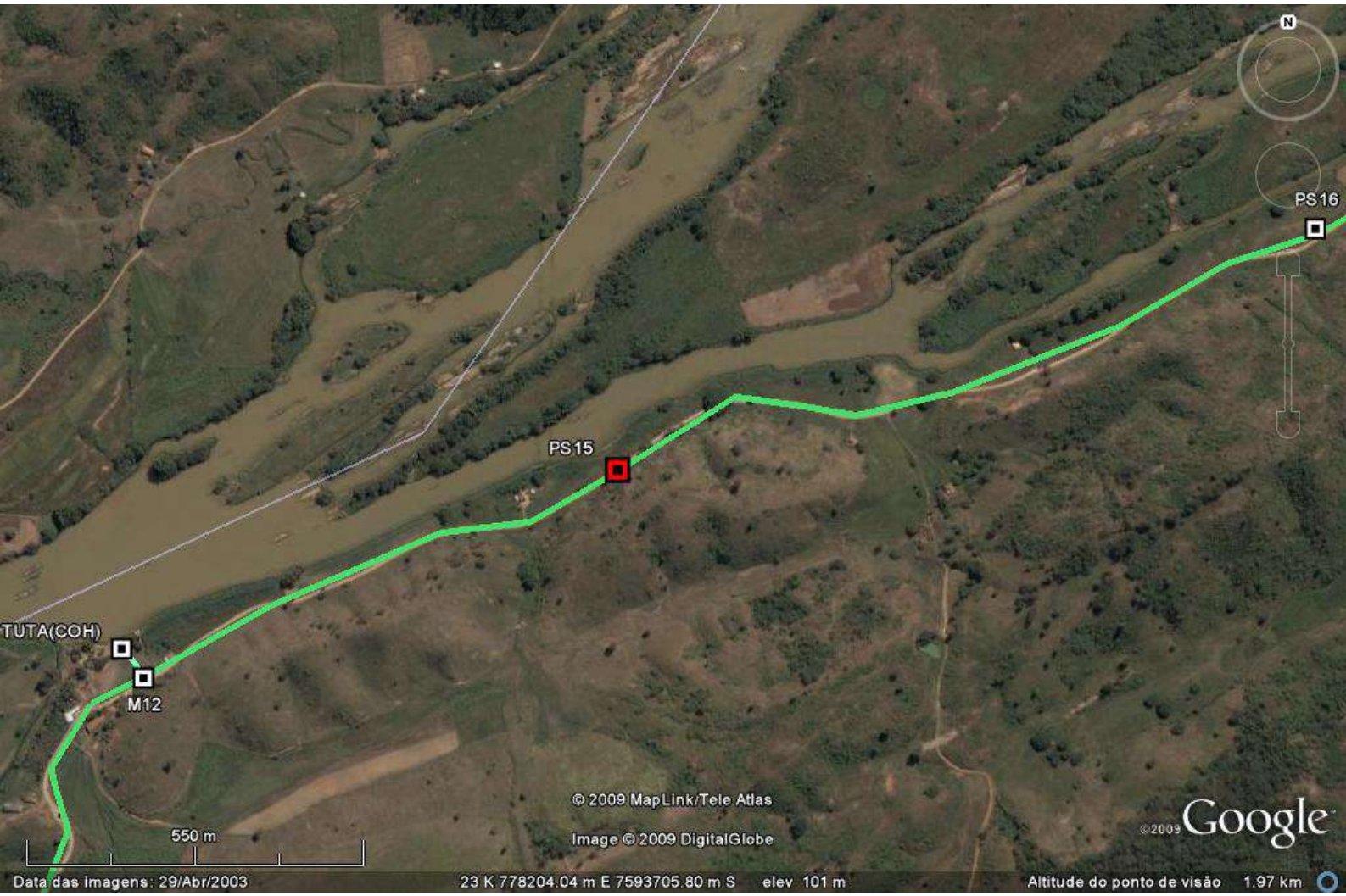
© 2009 Google

Data das imagens: 29/Abr/2003

23 K 774811.06 m E 7592591.92 m S elev 93 m

Altitude do ponto de visão 1.94 km





PS15

PS16

TUTA(COH)  
M12

© 2009 MapLink/Tele Atlas  
Image © 2009 DigitalGlobe

© 2009 Google

550 m

Data das imagens: 29/Abr/2003

23 K 778204.04 m E 7593705.80 m S elev 101 m

Altitude do ponto de visão 1.97 km









PS23

PS24

PS25

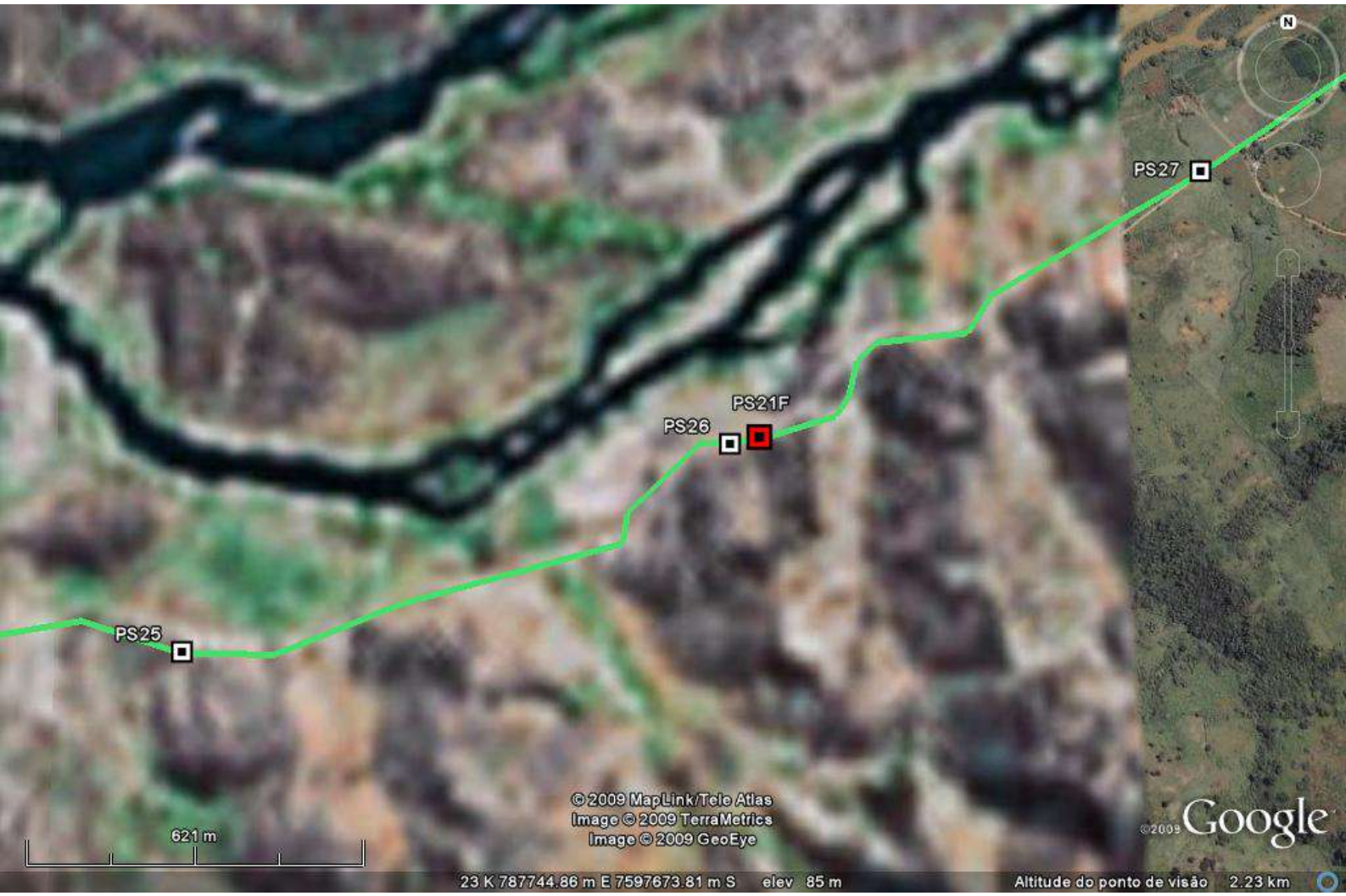
628m

© 2009 MapLink/Tele Atlas  
Image © 2009 TerraMetrics

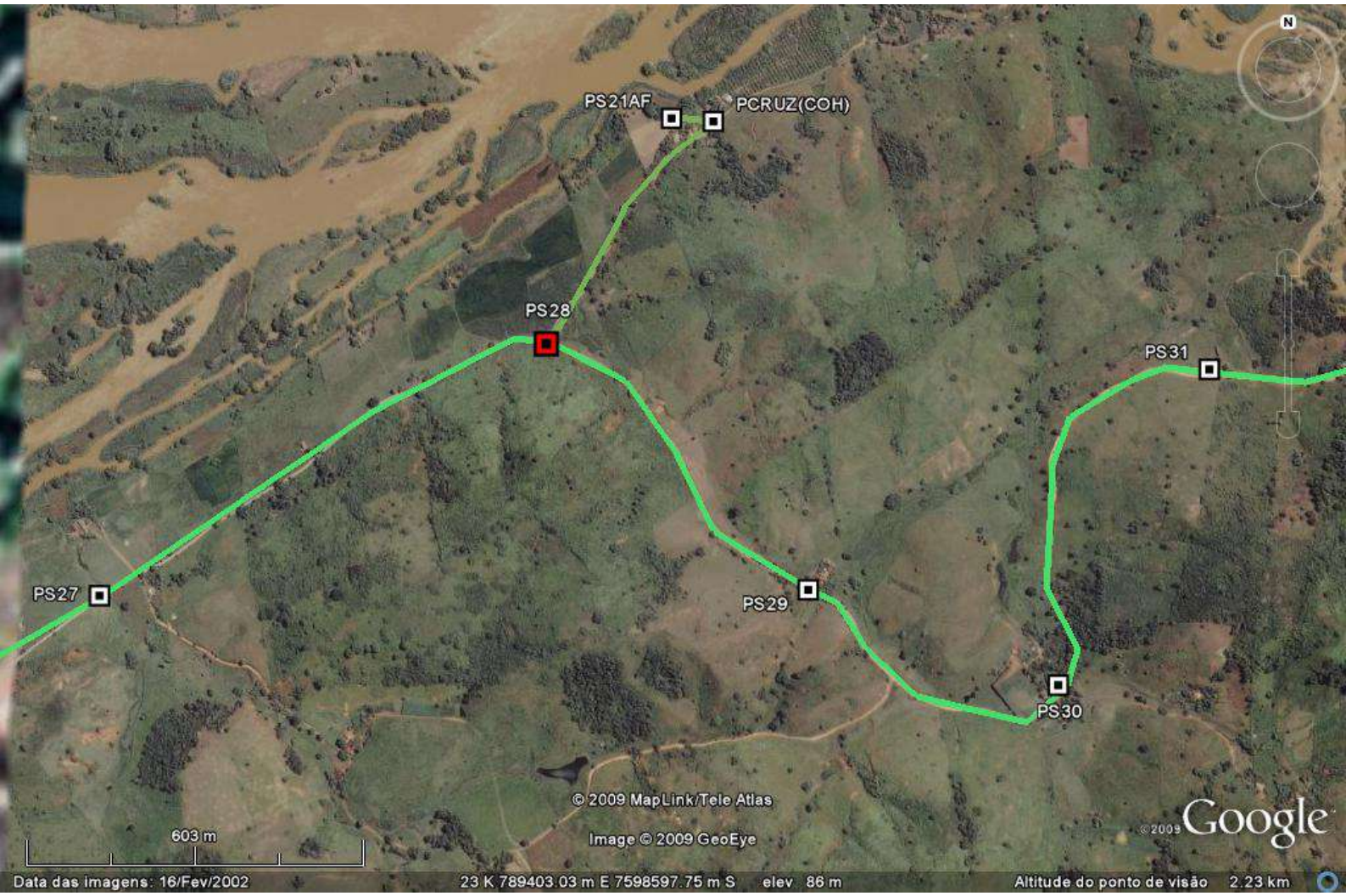
© 2009 Google

23 K 785688.11 m E 7596802.19 m S elev 92 m

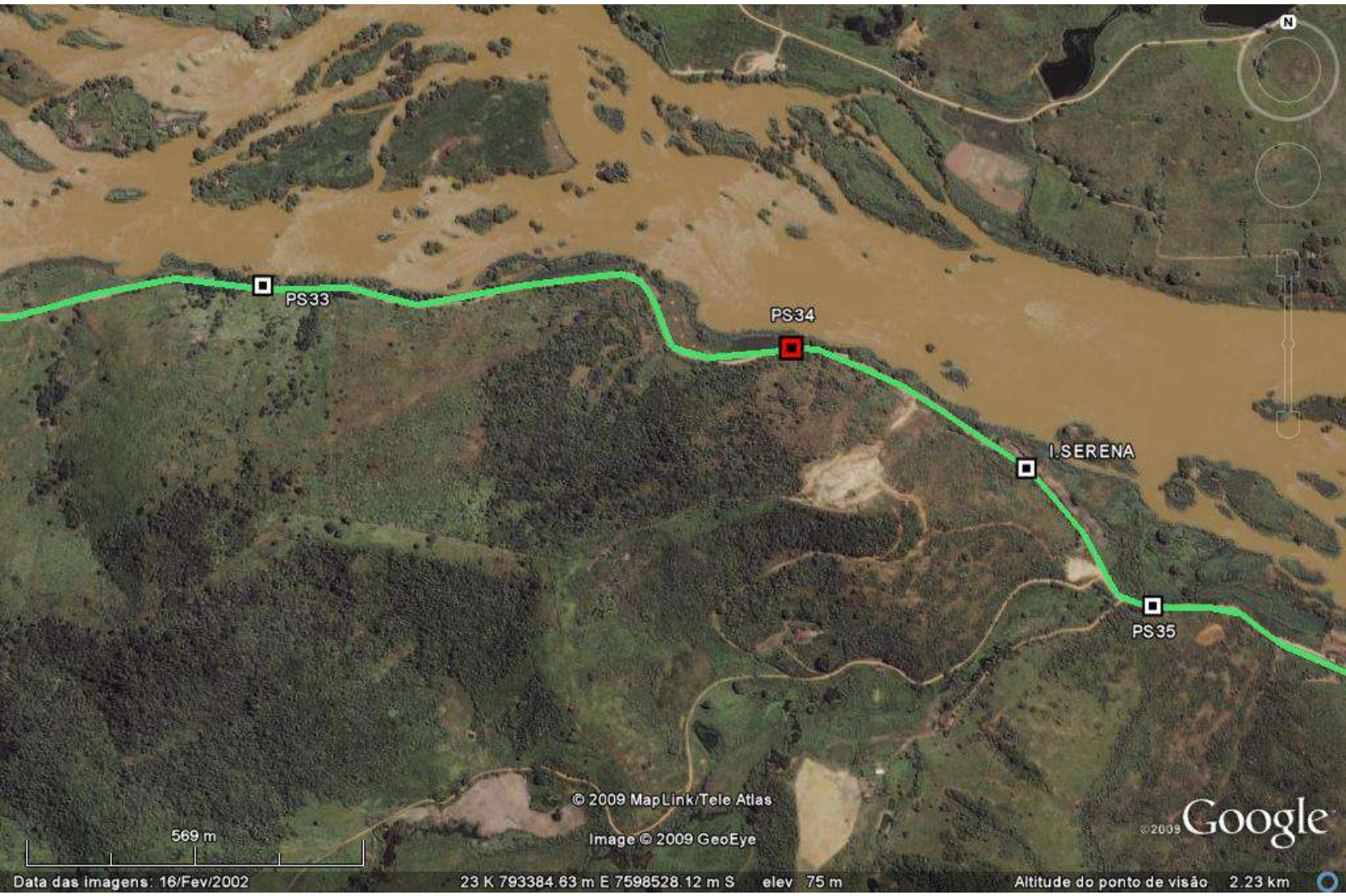
Altitude do ponto de visão 2.23 km

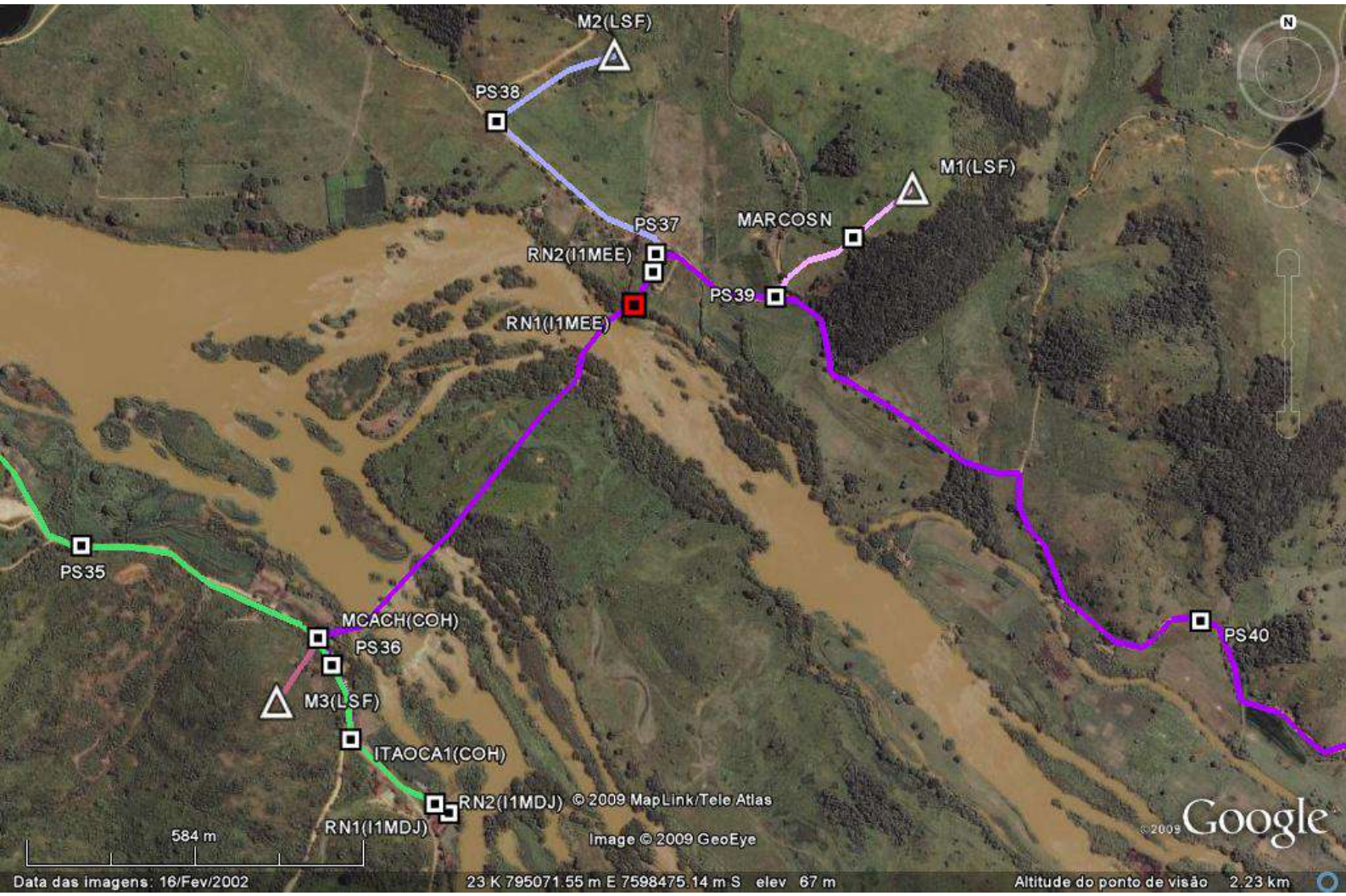


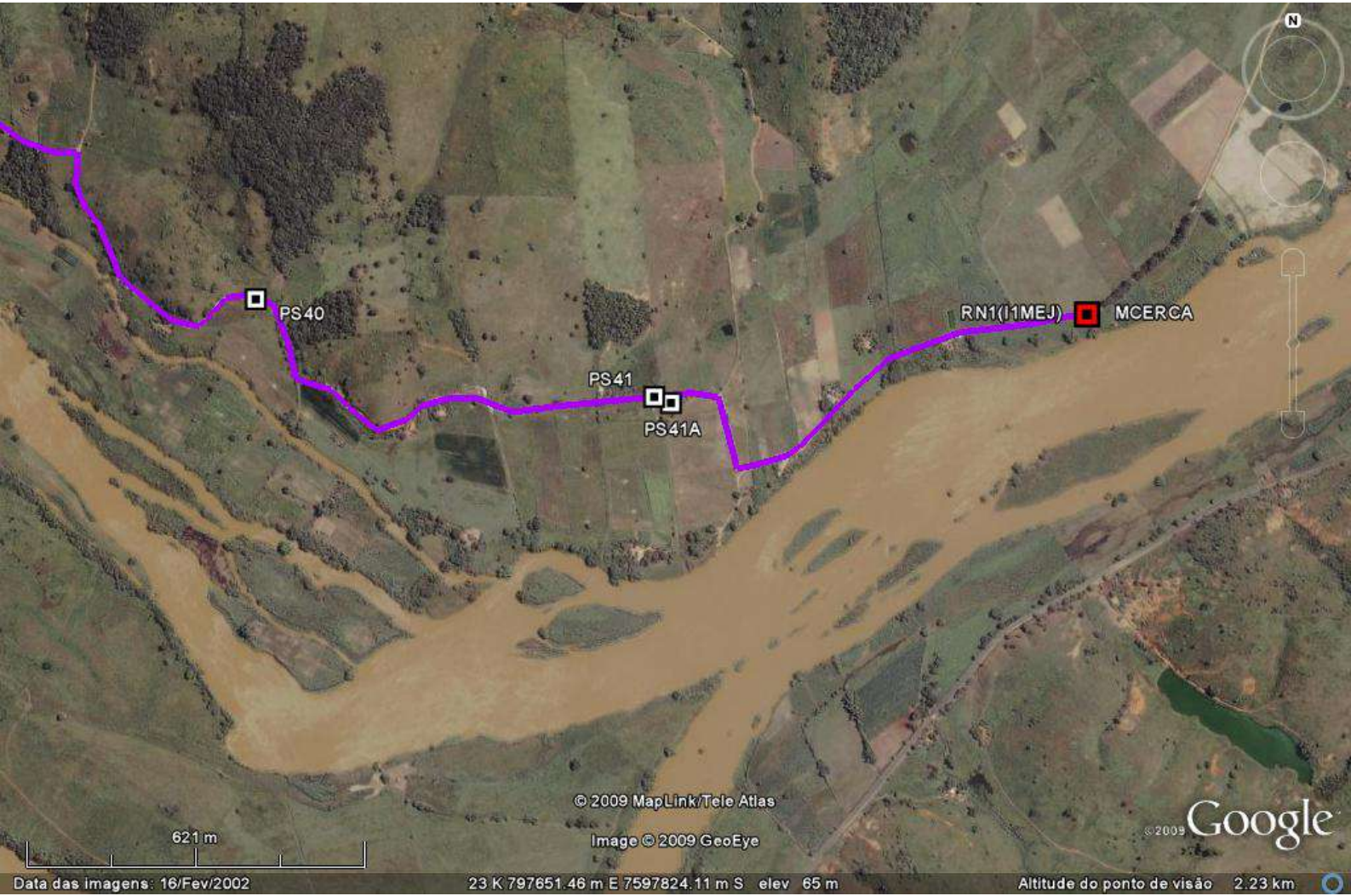












621 m

© 2009 MapLink/Tele Atlas

Image © 2009 GeoEye

© 2009

Google

Data das imagens: 16/Fev/2002

23 K 797851.46 m E 7597824.11 m S elev 65 m

Altitude do ponto de visão 2.23 km