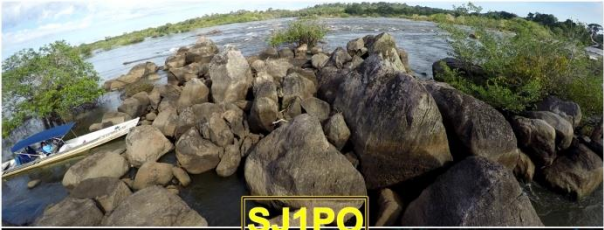


9º RELATÓRIO CONSOLIDADO DE ANDAMENTO DO PBA E DO ATENDIMENTO  
DE CONDICIONANTES

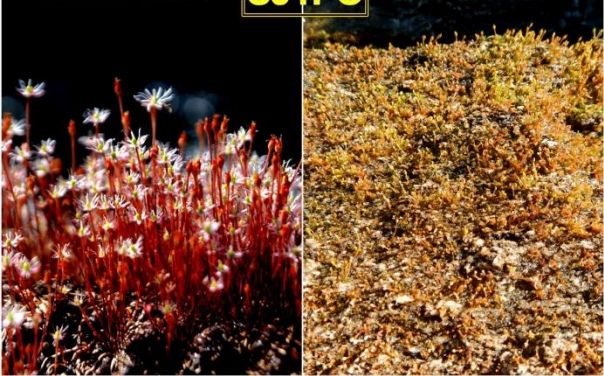
**CAPÍTULO 2 – ANDAMENTO DO PROJETO BÁSICO AMBIENTAL**

**Anexo 13.1.2 - 3 – Imagens da 15ª e 16ª Campanhas de  
Podostemaceae**

**ANEXO 13.1.2 - 3 – IMAGENS FOTOGRÁFICAS DA 15ª E 16ª CAMPANHAS DE PODOSTEMACEAE (JUN/15 E SET/15)**



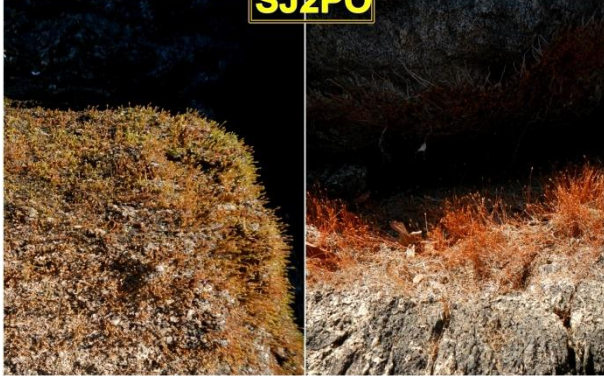
**SJ1PO**



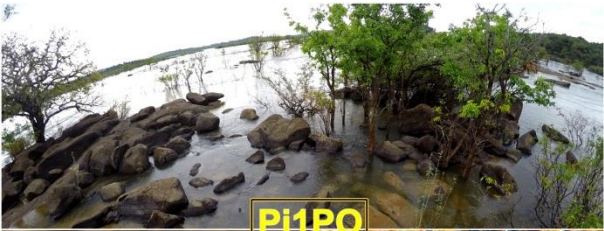
**A**



**SJ2PO**



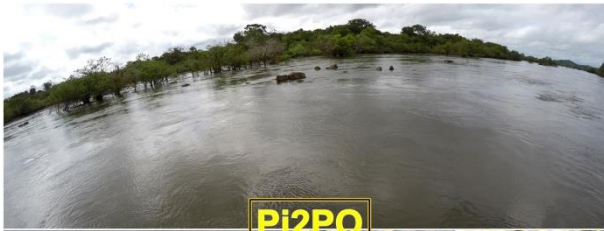
**B**



**Pi1PO**



**C**



**Pi2PO**



**D**



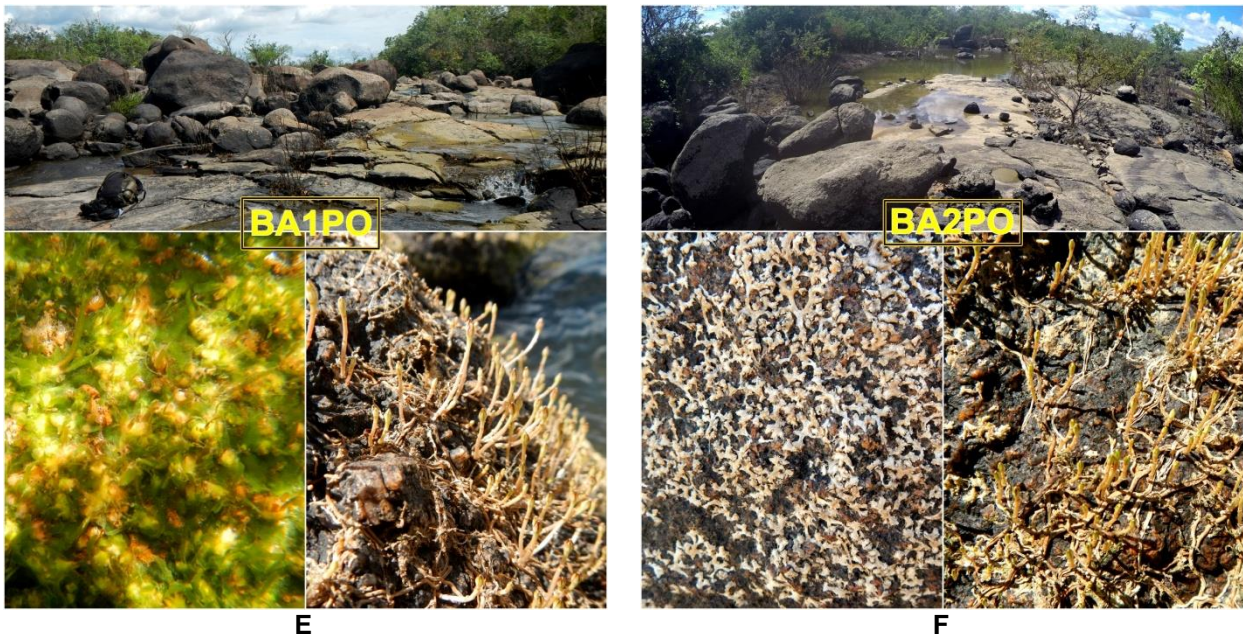
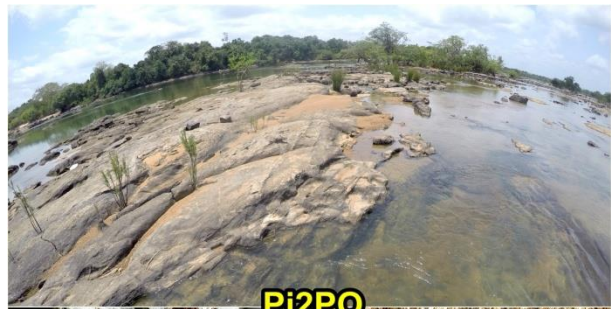


Figura 13.1.2 - 1 – Panorâmica das parcelas utilizadas durante o monitoramento fenológico das Podostemaceae no rio Xingu, PA. Área 1: A e B - Ilha Sta Juliana; Área 2: C e D - Pimental e, Área 3: D e E - entrada do Furo Bela Vista, foz do rio Bacajá. Junho/15.

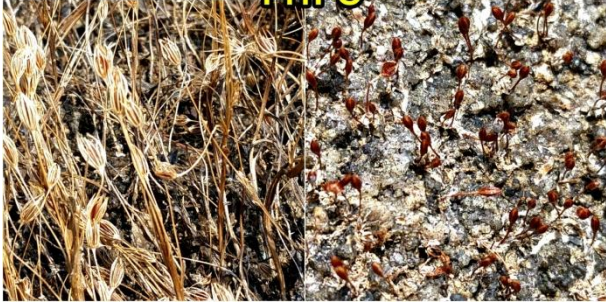




Pi1PO



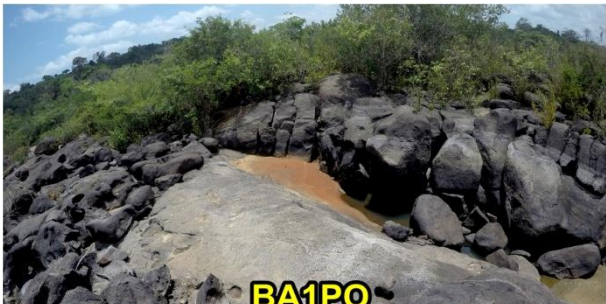
Pi2PO



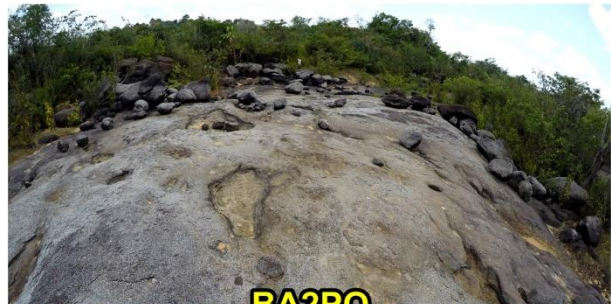
A



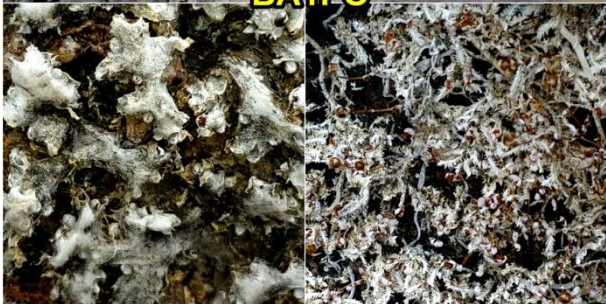
B



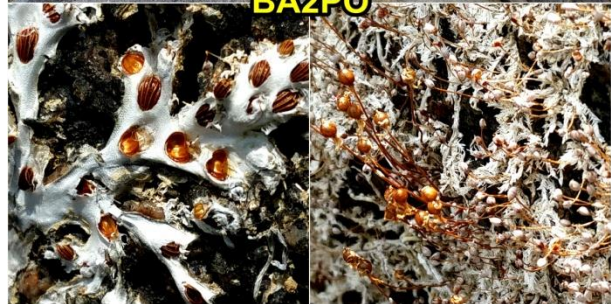
BA1PO



BA2PO



C



D

Figura 13.1.2 - 2 – Panorâmica das parcelas utilizadas durante o monitoramento fenológico das Podostemaceae no rio Xingu, PA. Área 2: A e B - Pimental e, Área 3: C e D - entrada do Furo Bela Vista, foz do rio Bacajá. Setembro/2015.