

4º RELATÓRIO CONSOLIDADO DE ANDAMENTO DO PBA E DO ATENDIMENTO  
DE CONDICIONANTES

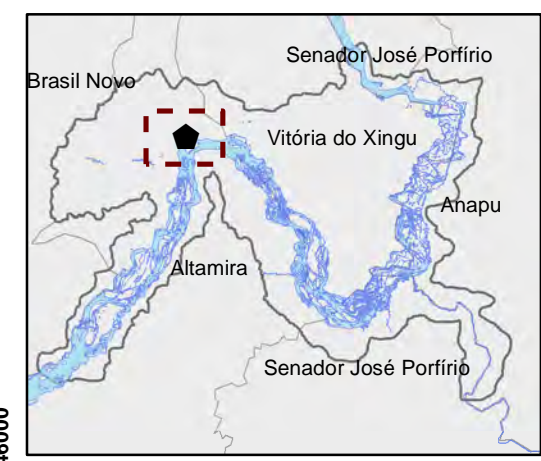
**CAPÍTULO 2 – ANDAMENTO DO PROJETO BÁSICO AMBIENTAL**

**Anexo 10.3 - 6 – Perfis GPR**



**MAPA COM LOCALIZAÇÃO DOS PERFIS DE GPR REALIZADOS EM ALTAMIRA**

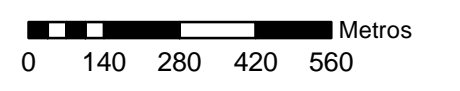
PROGRAMA DE MONITORAMENTO DA ESTABILIDADE DAS ENCOSAS MARGIAIS E DOS PROCESSOS EROSIVOS - UHE BELO MONTE





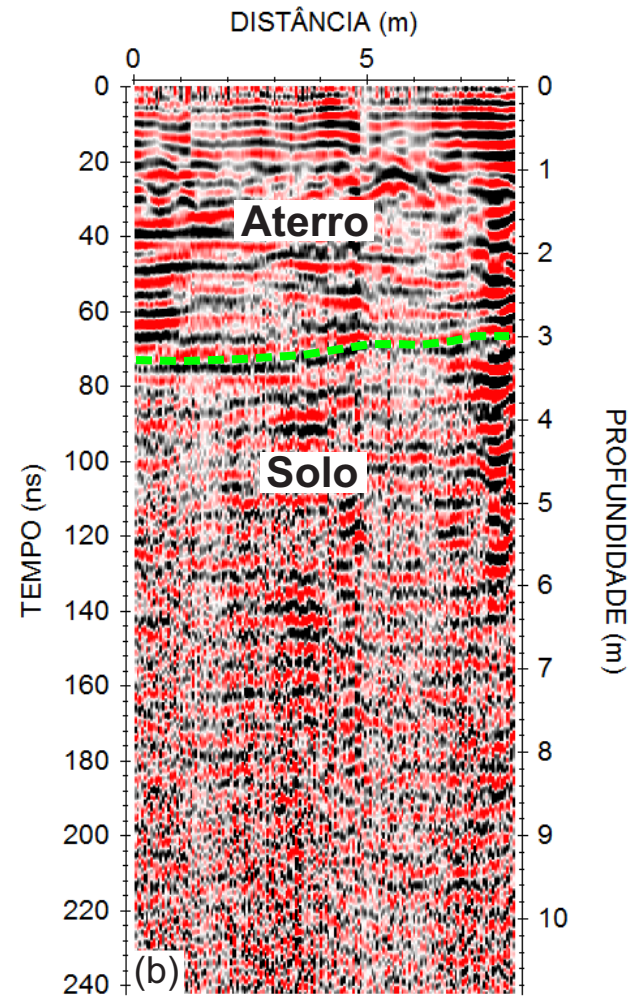
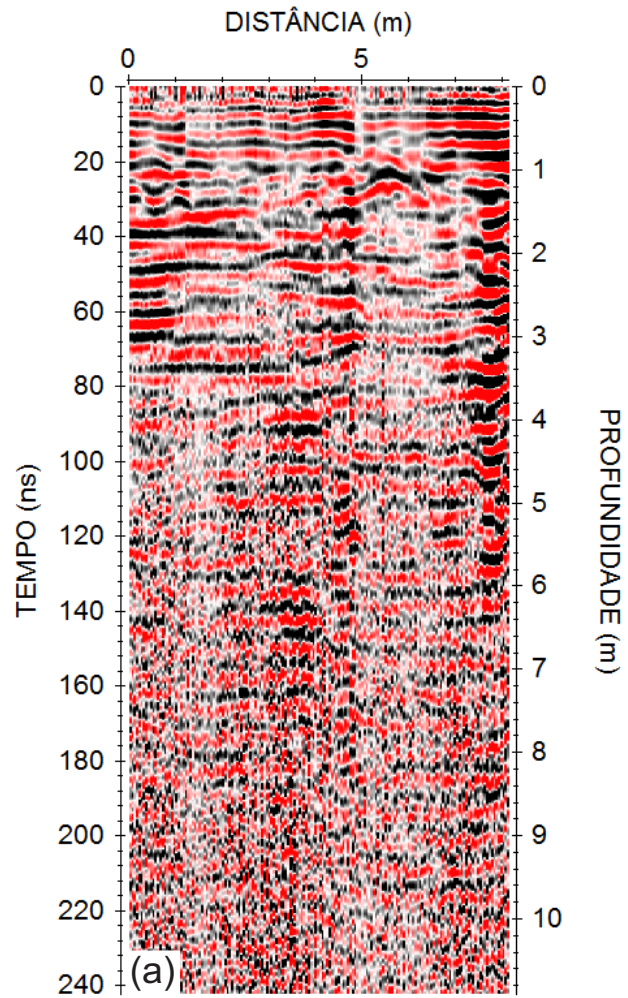
● Altamira  
 ☁ Área de Influência Direta    🌊 Rio Xingu

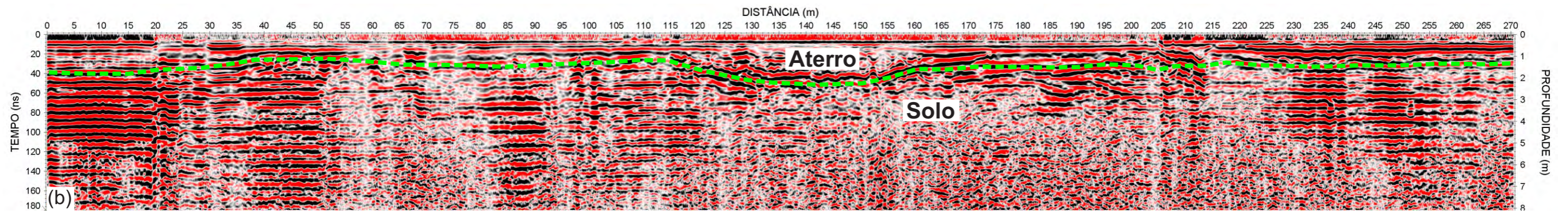
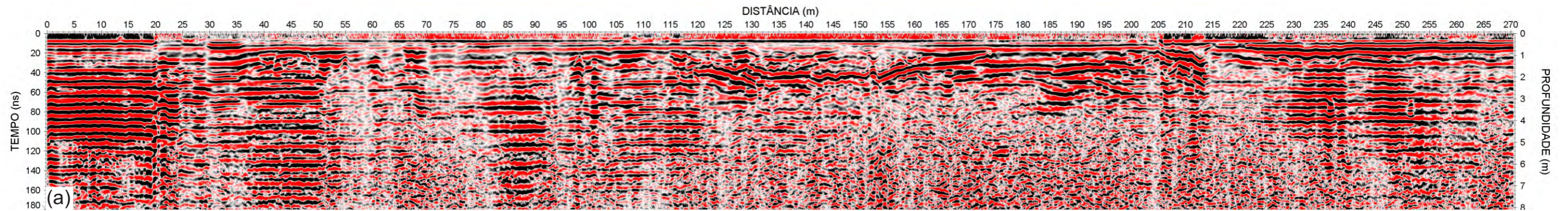
**LEGENDA**

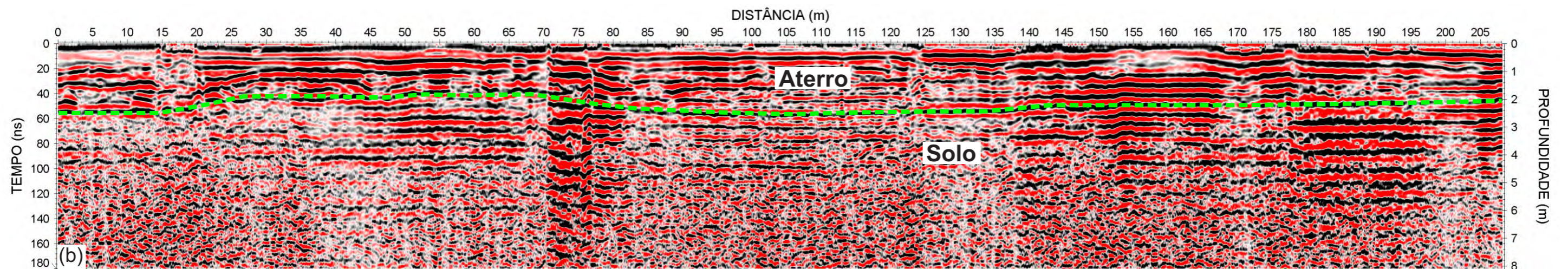
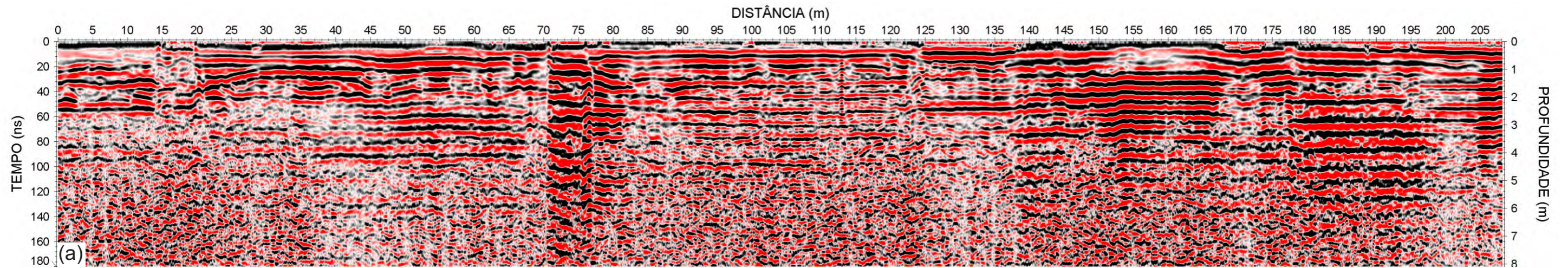
● poços de monitoramento instalados

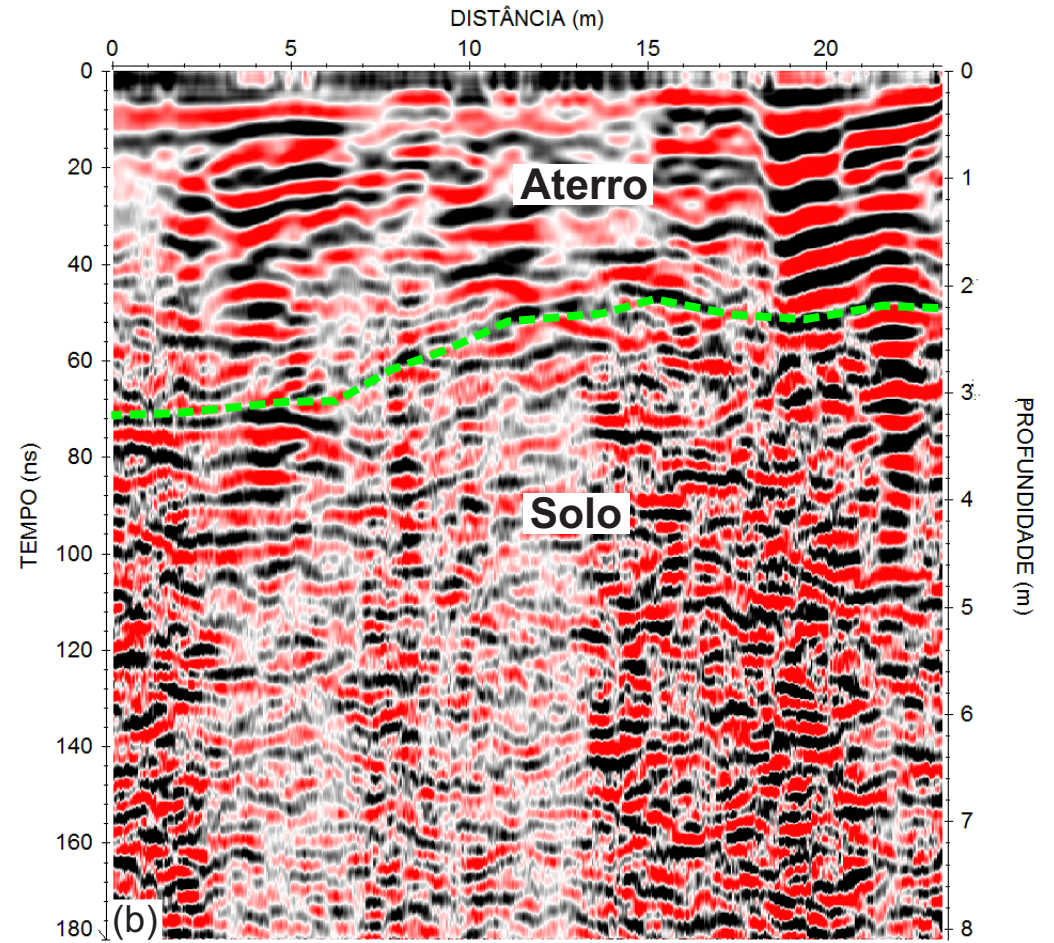
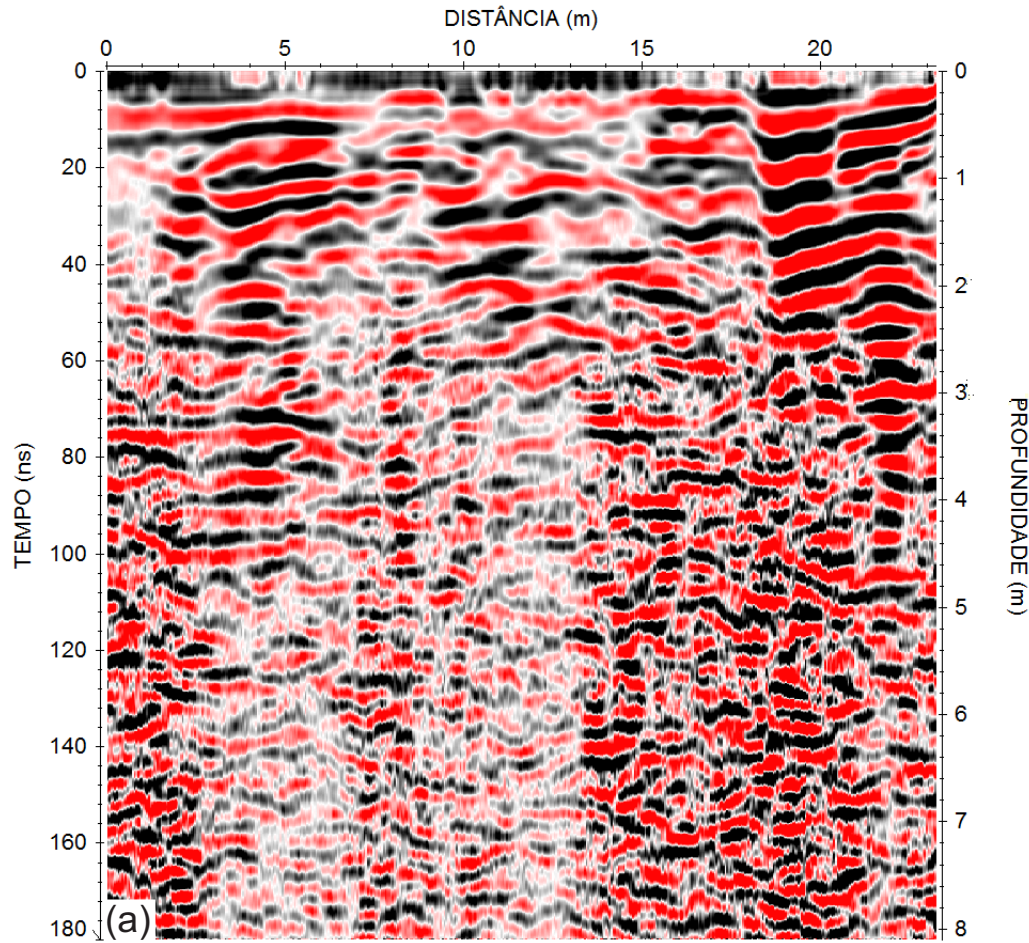


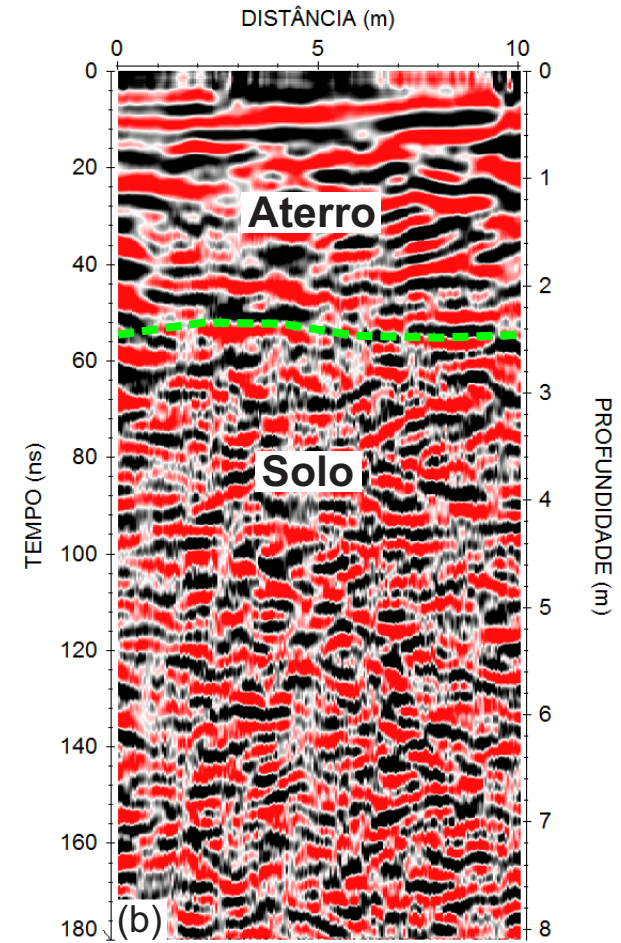
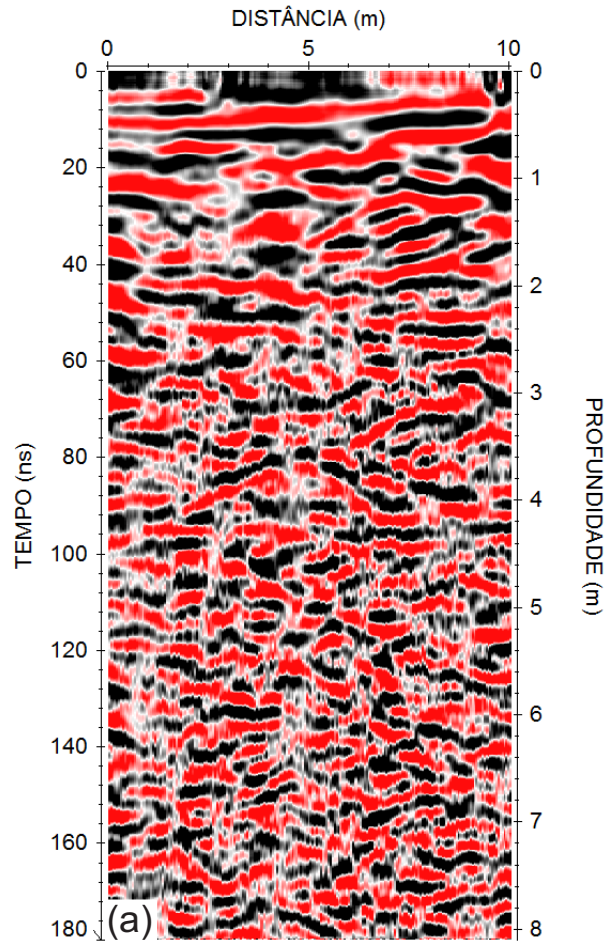
CLIENTE E EMPREENDIMENTO 	
Sistema de Projeção / Datum: UTM SAD 69 Zona 22S	DATA: ABRIL/2013
Escala: 1:14.000	
Execução: (61) 3307 - 1197	

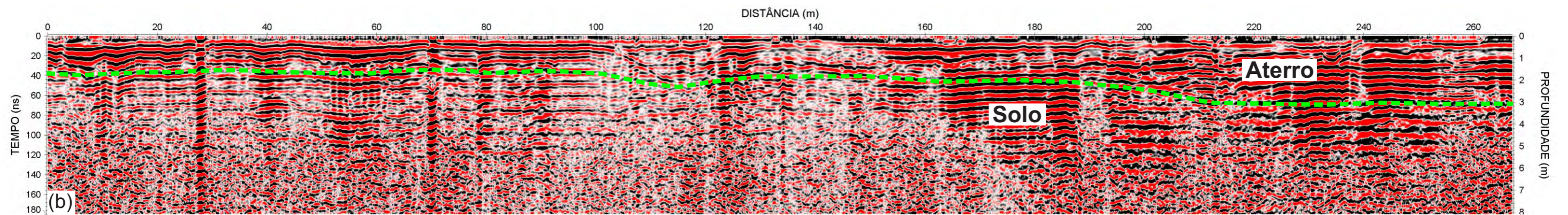
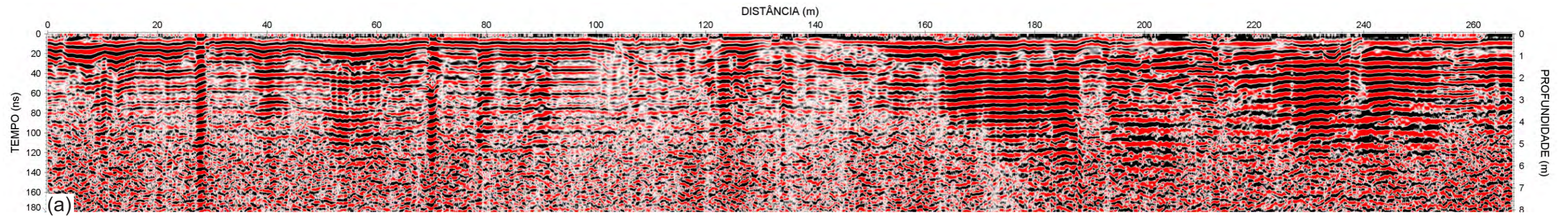




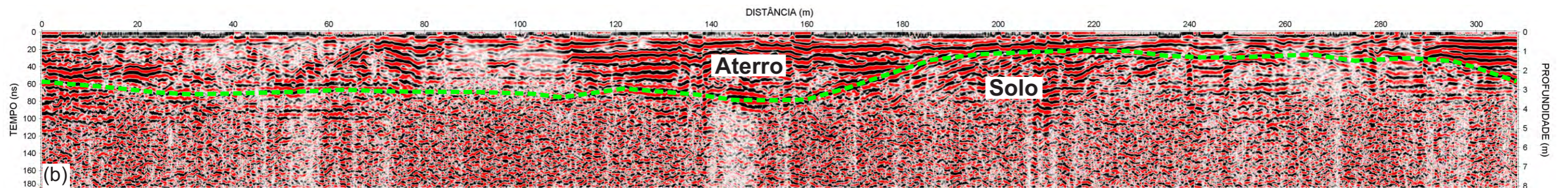
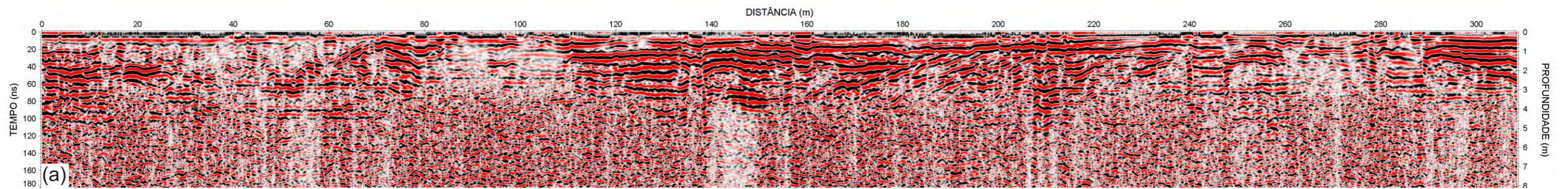


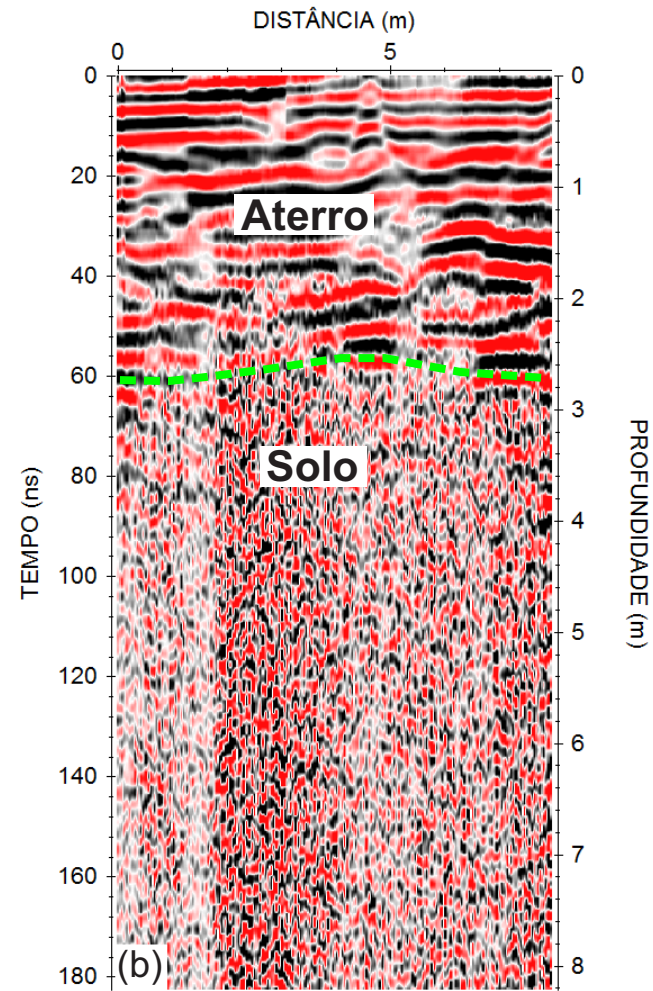
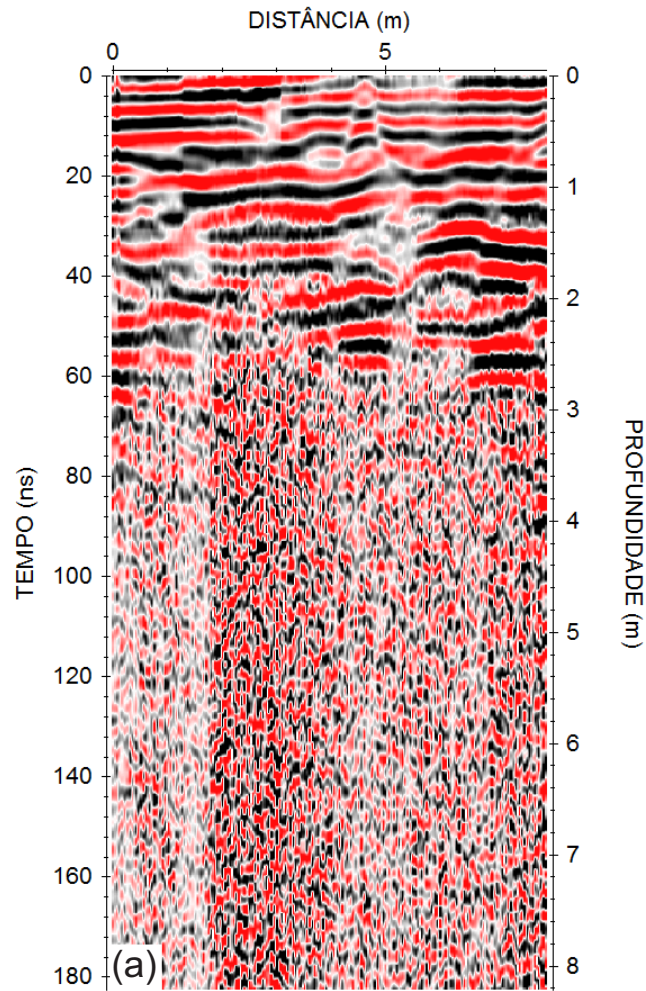


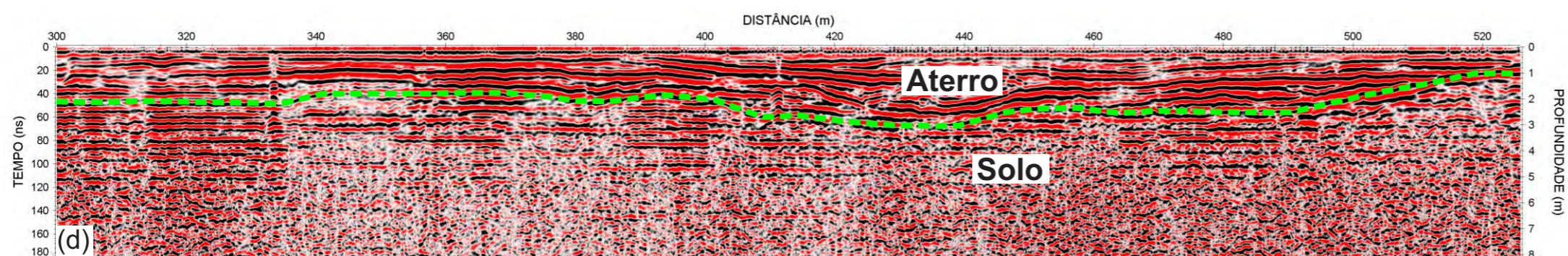
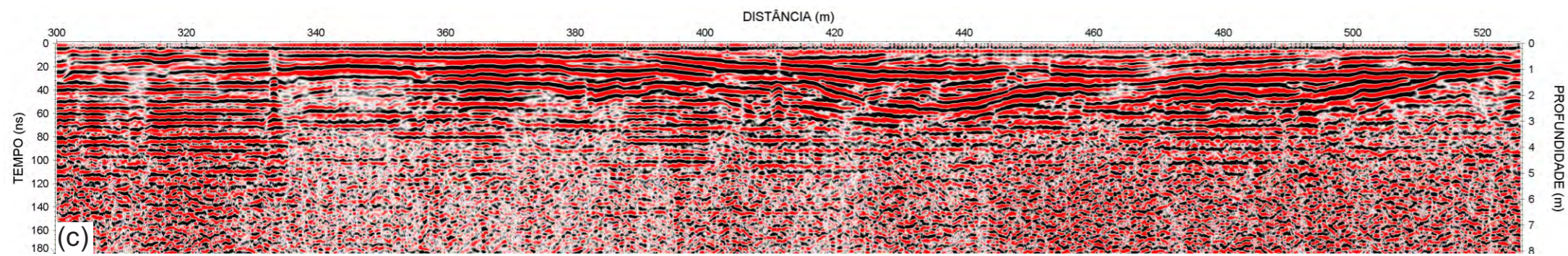
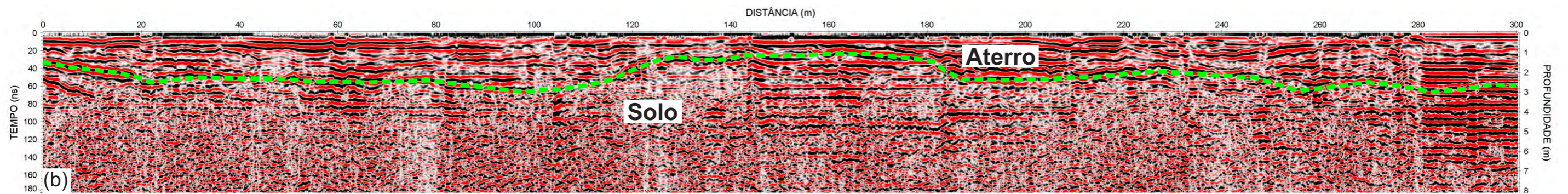
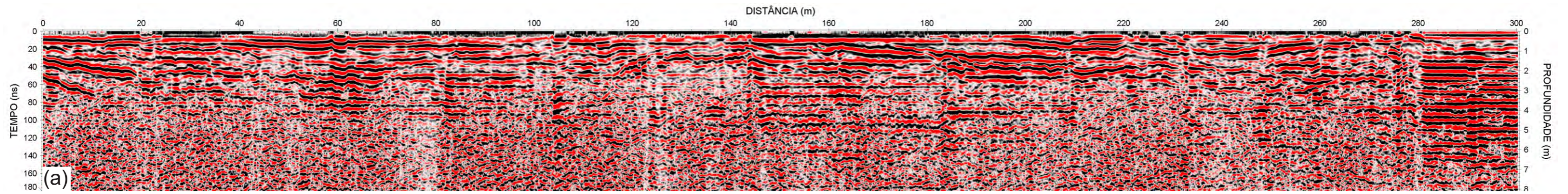


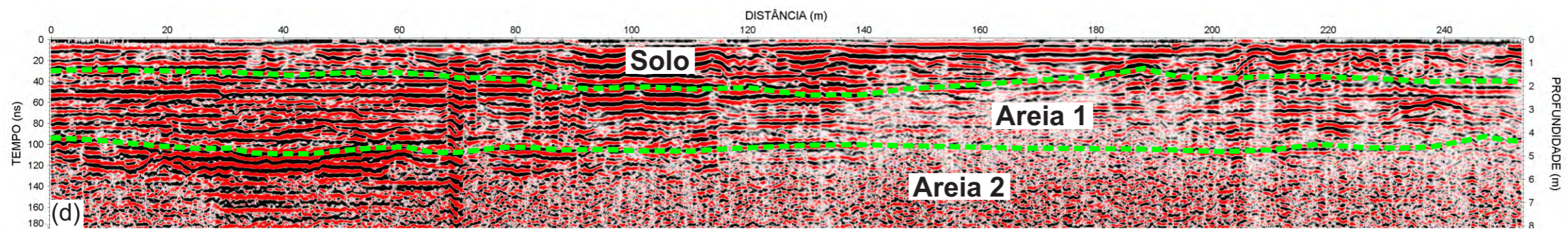
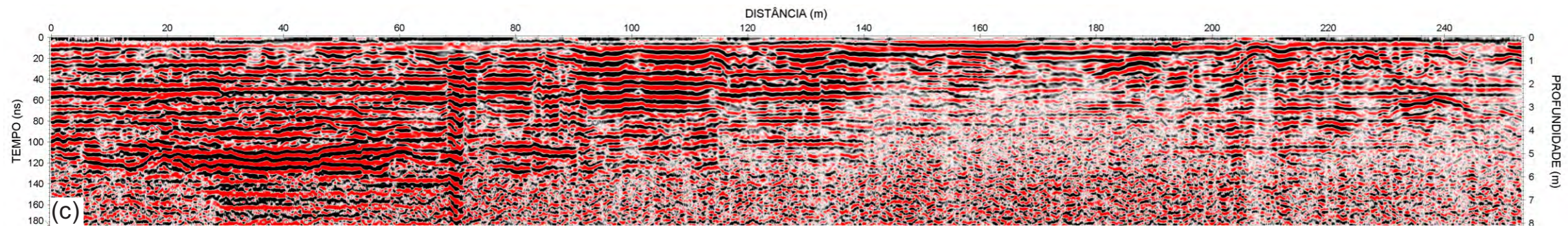
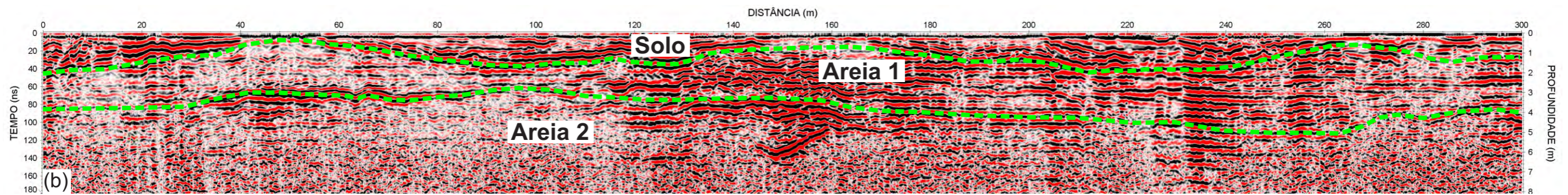
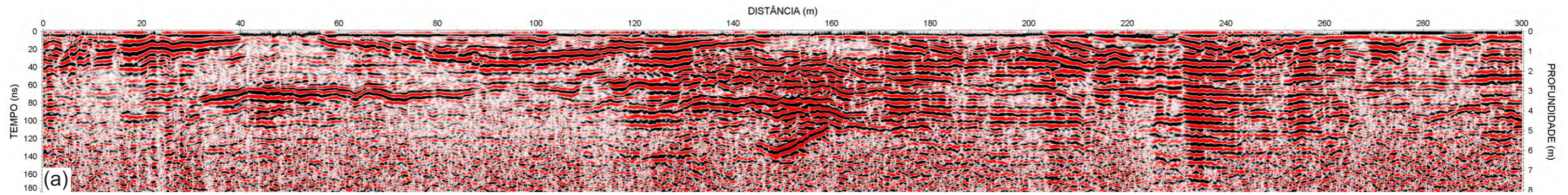


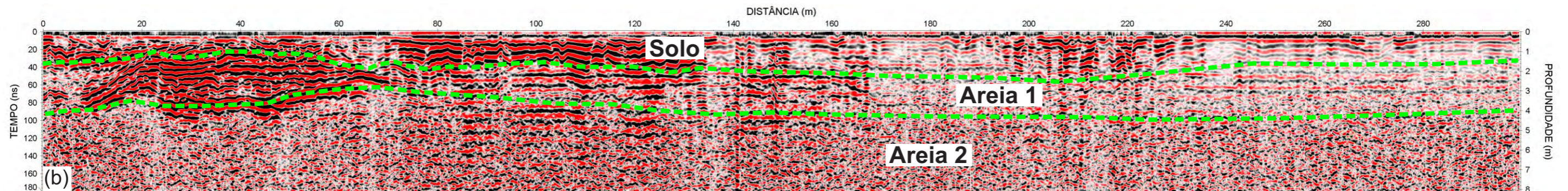
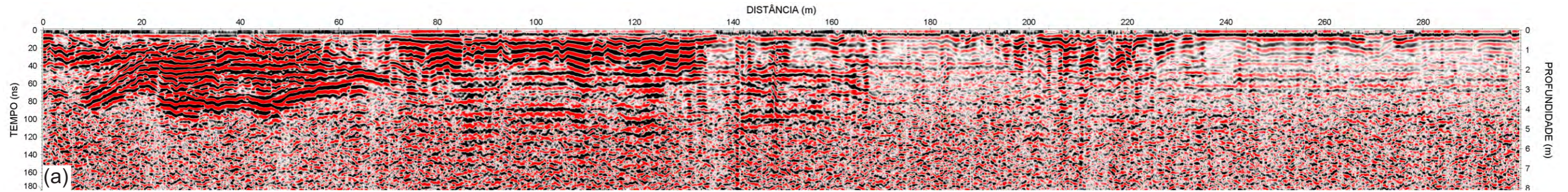


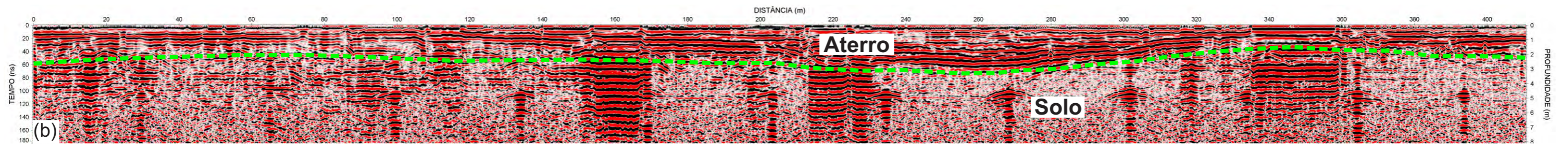
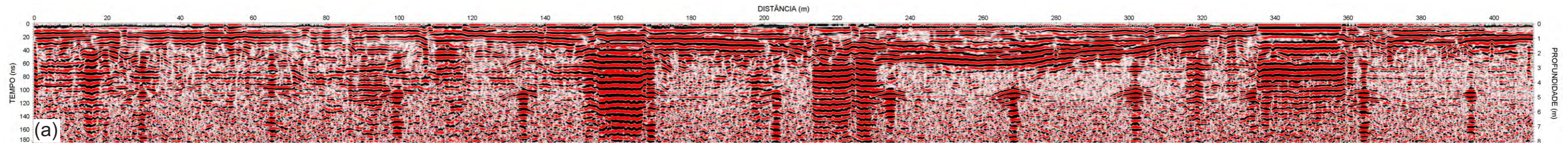


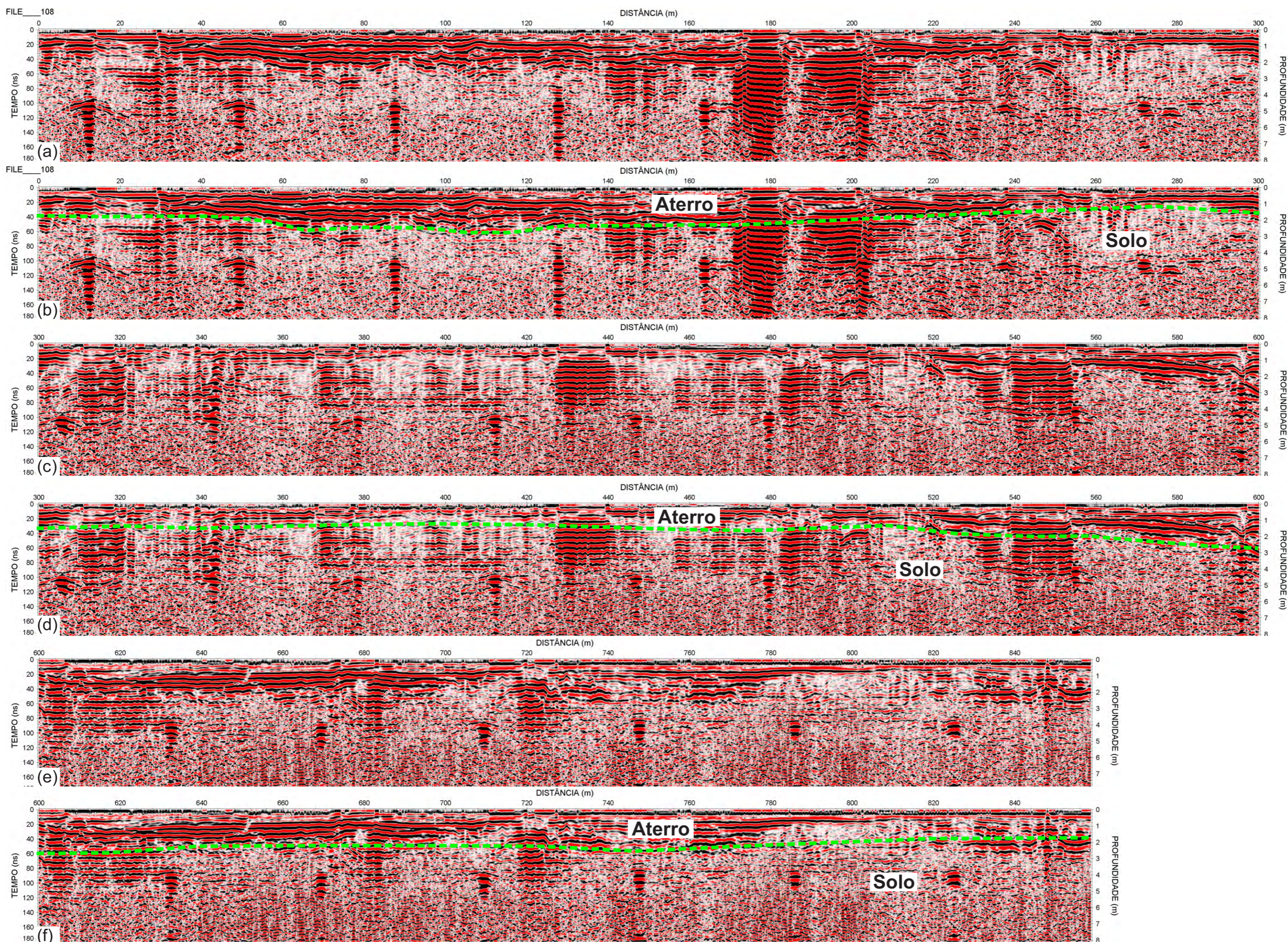




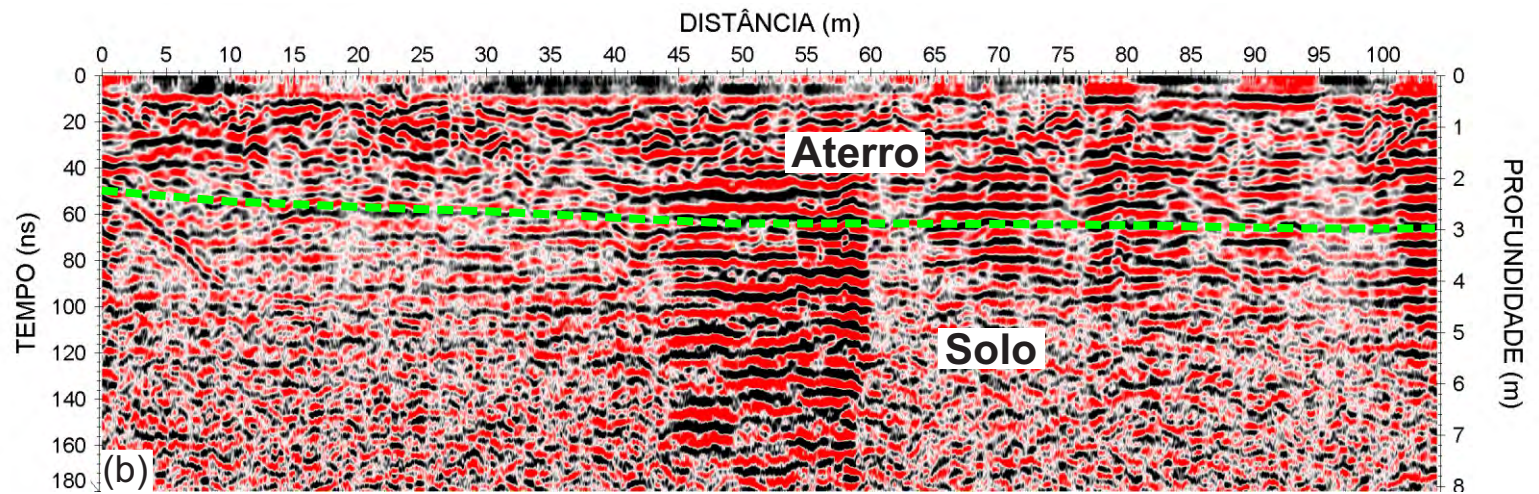
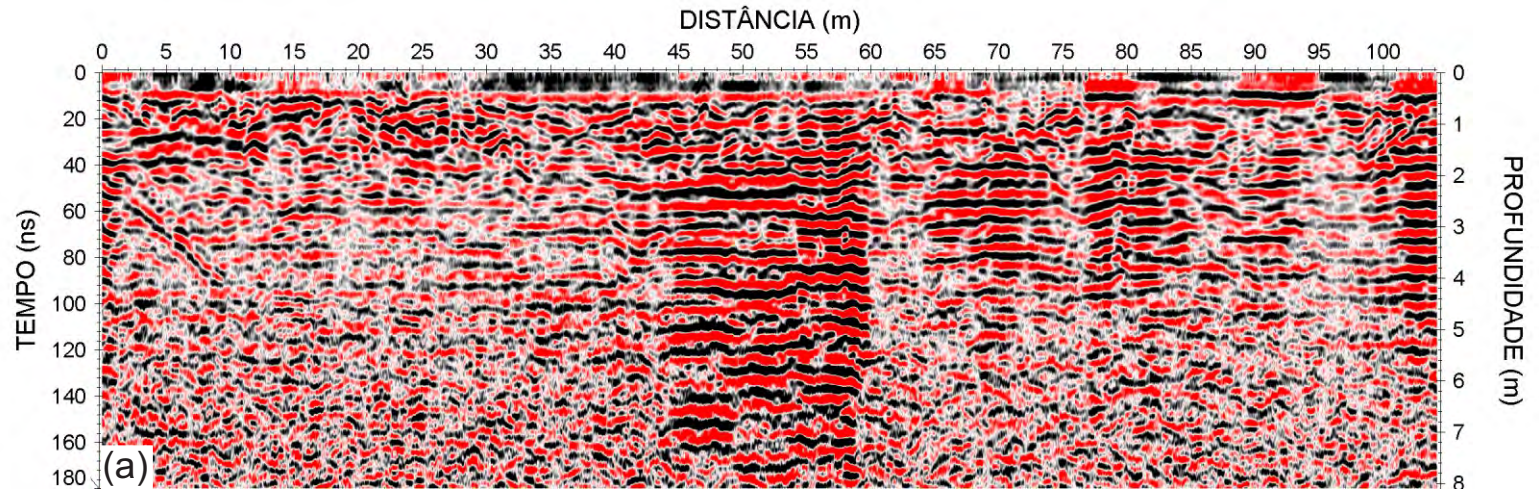




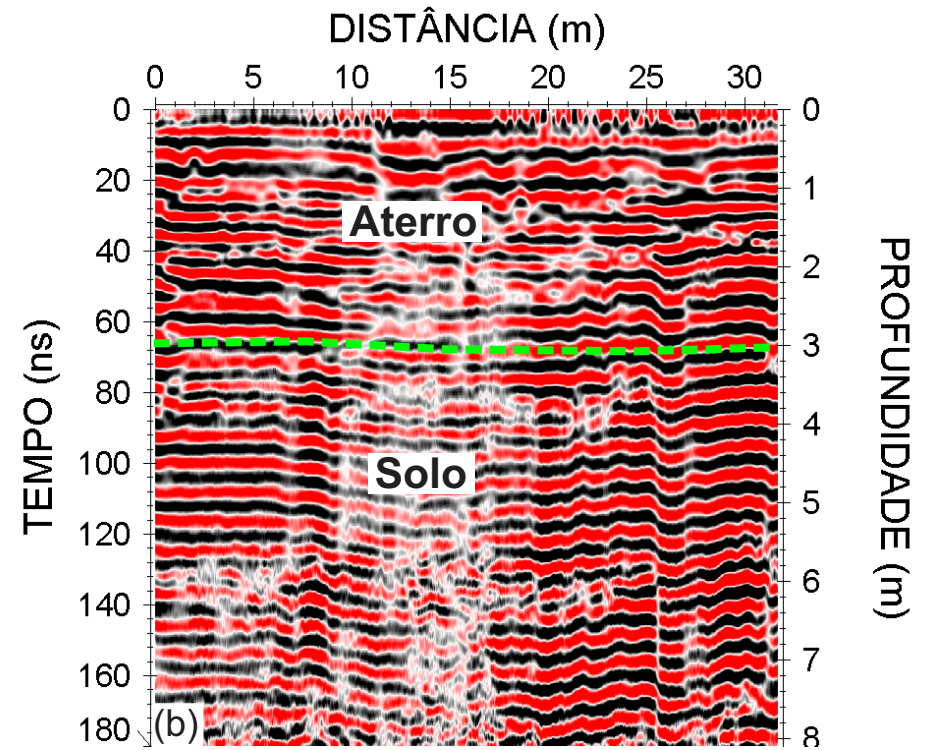
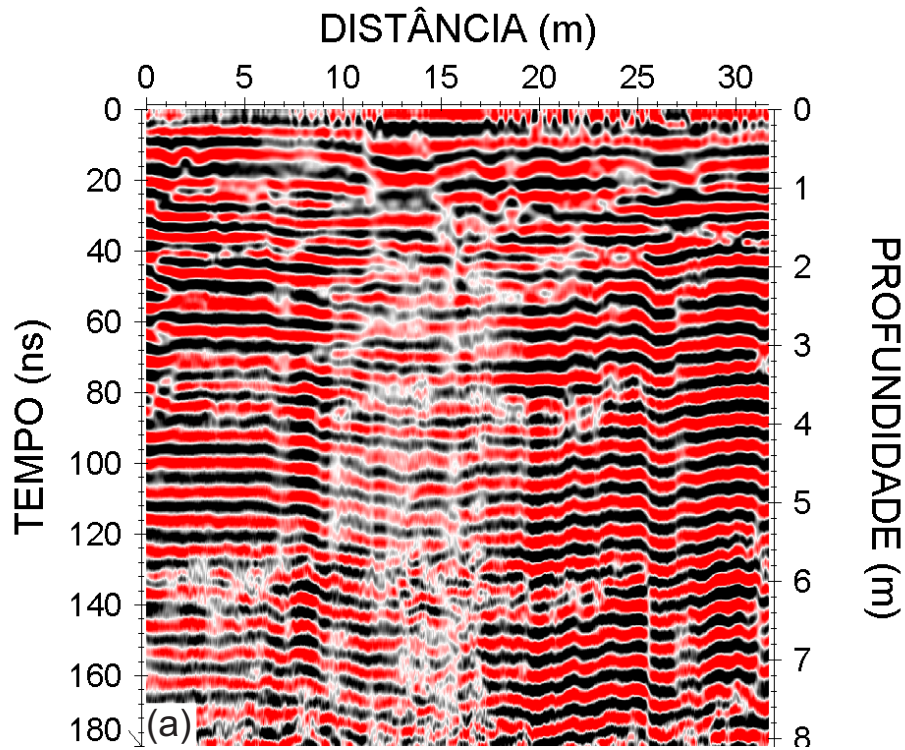


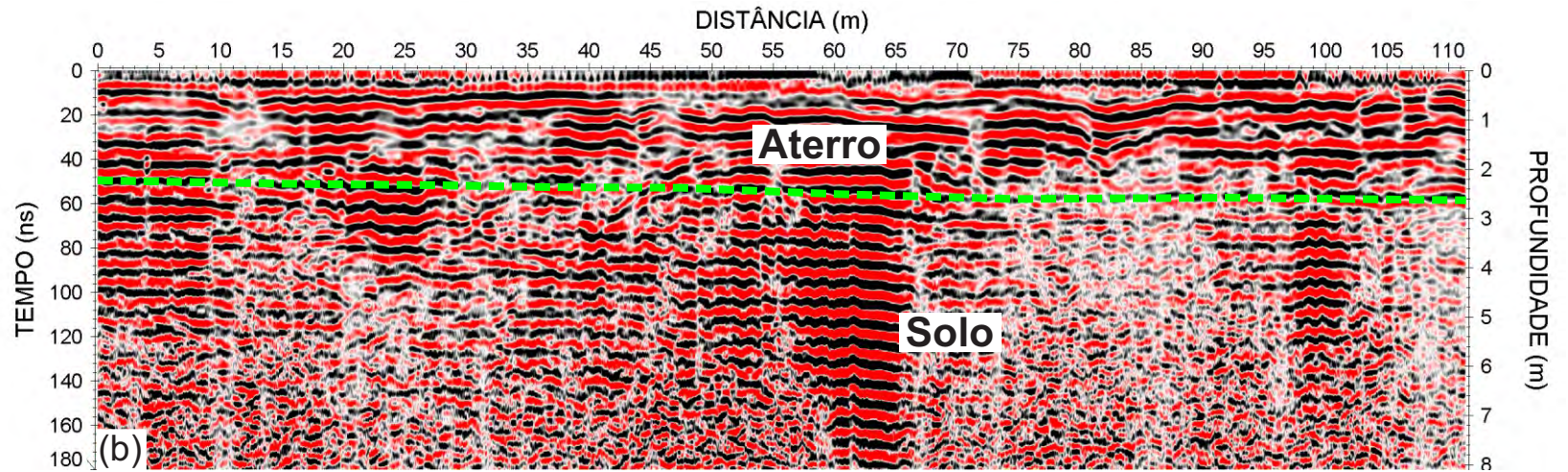
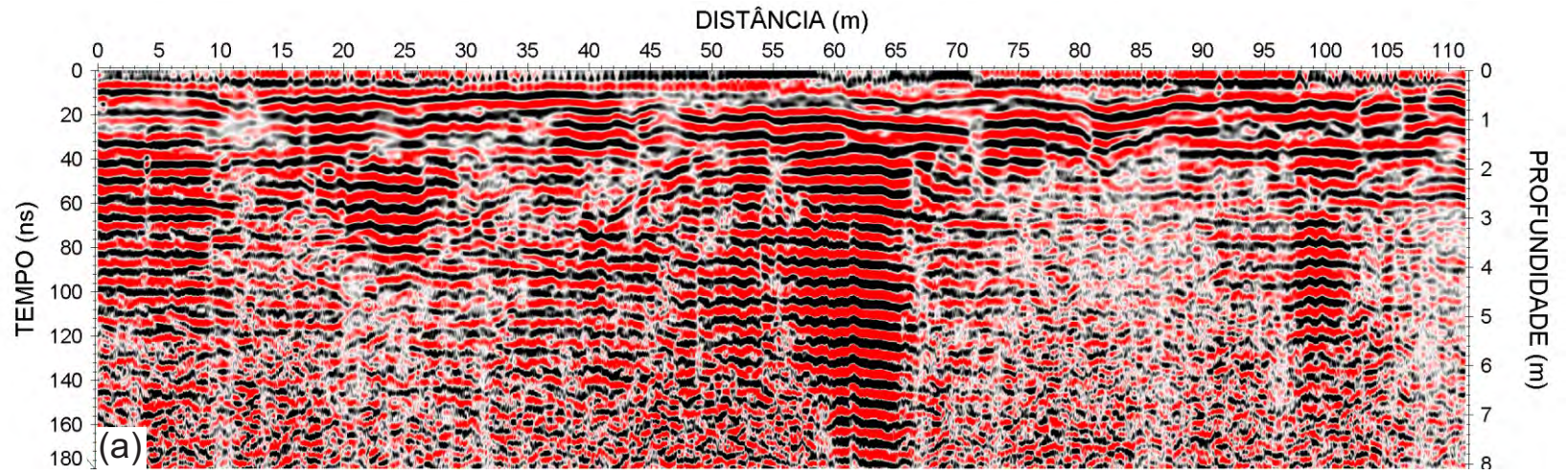


**ANEXO A13** - (a) Parte da seção de GPR FILE\_108 (0 a 300m). (b) Parte da seção interpretada (0 a 300m). (c) Parte da seção de GPR FILE\_108 (300 a 600m). (d) Parte da seção interpretada (300 a 600m). (e) Parte da seção de GPR FILE\_108 (600 a 865m). (f) Parte da seção interpretada (600 a 865m).

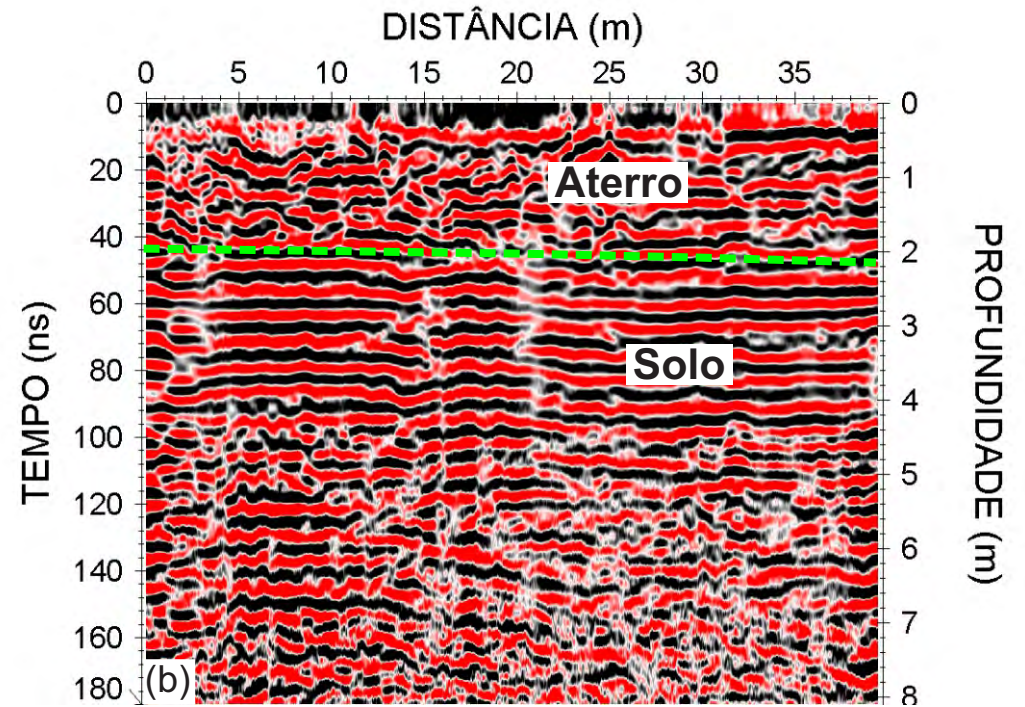
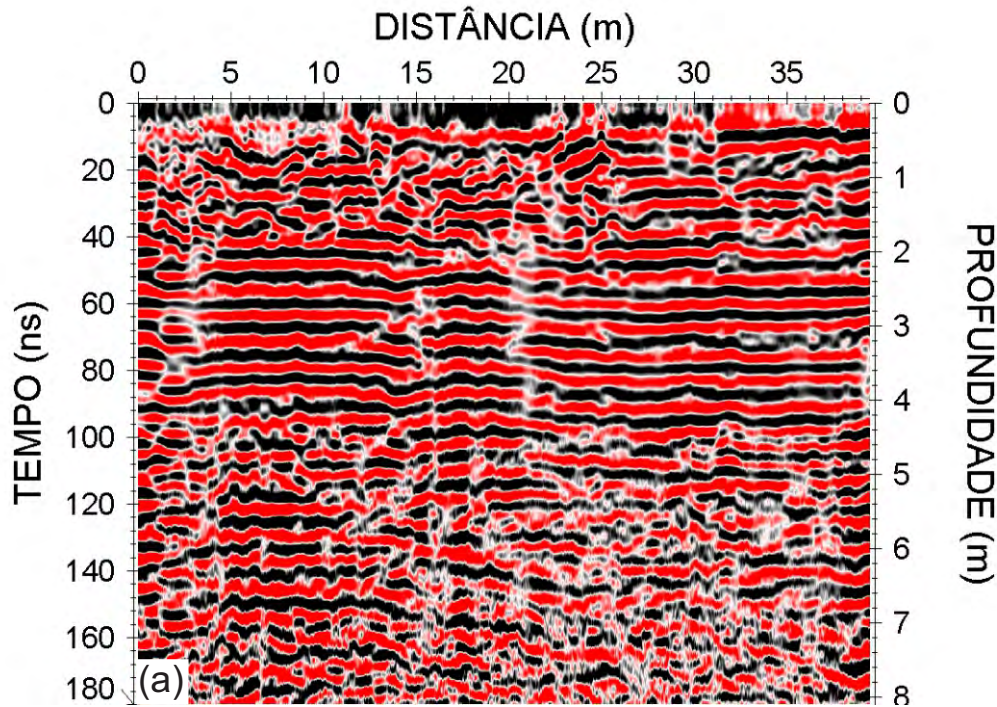


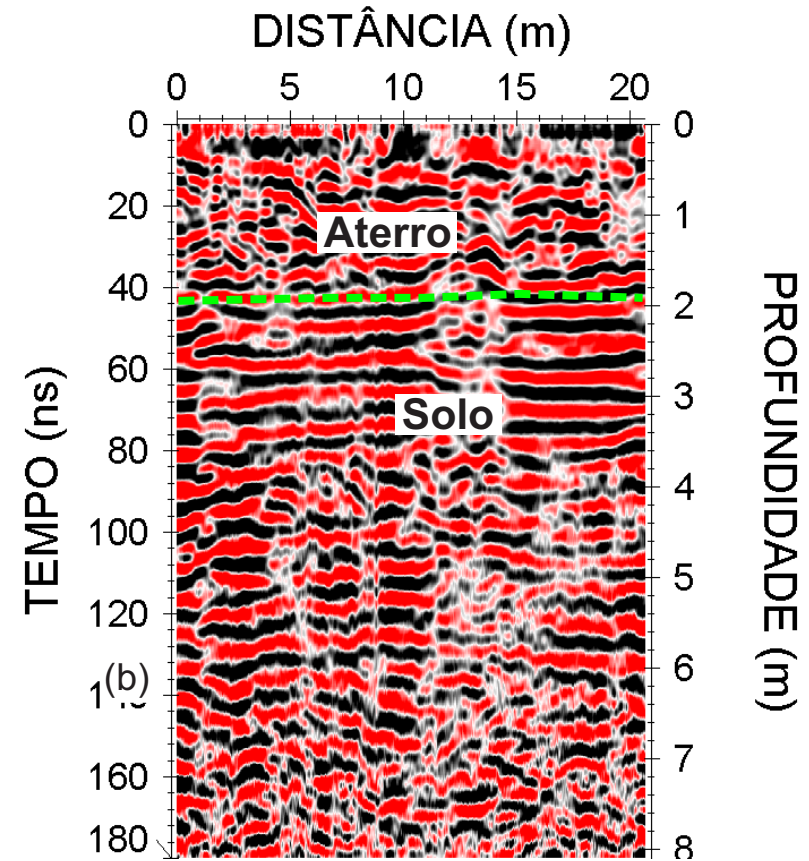
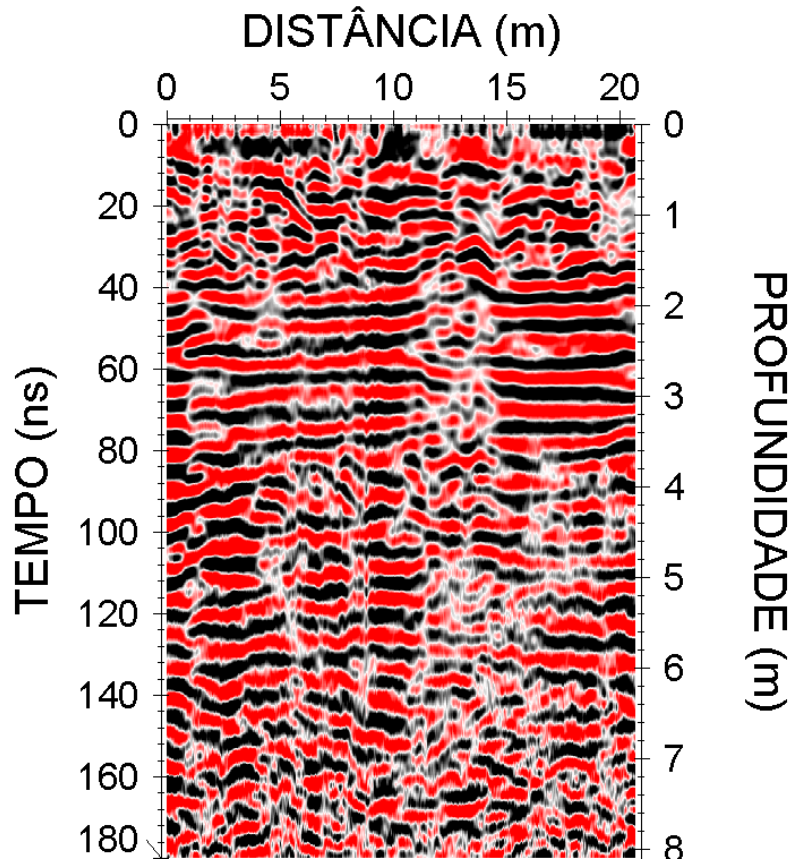


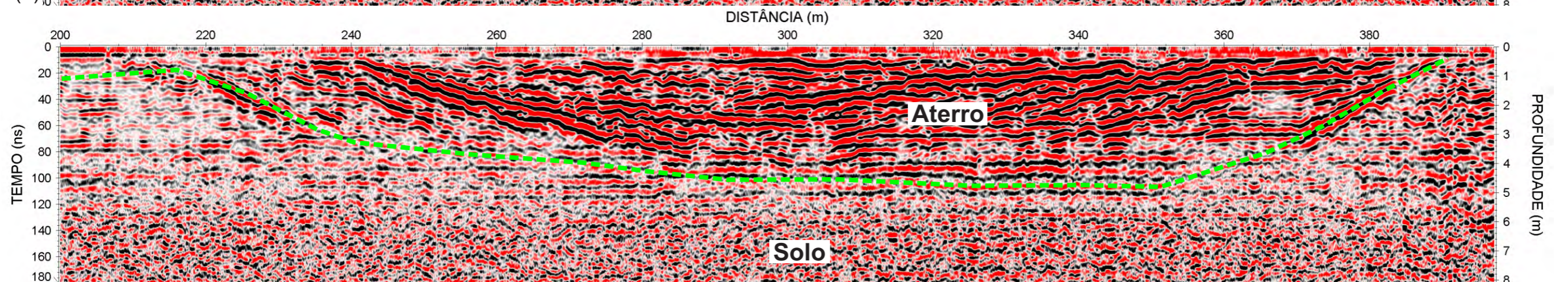
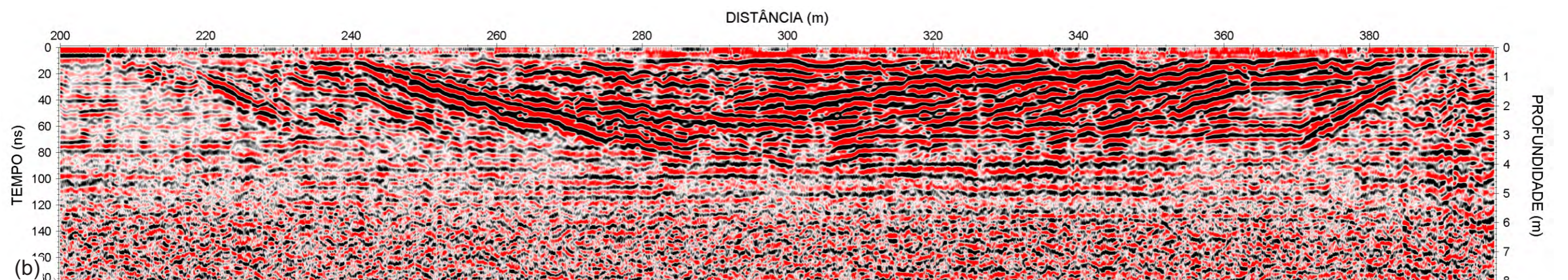
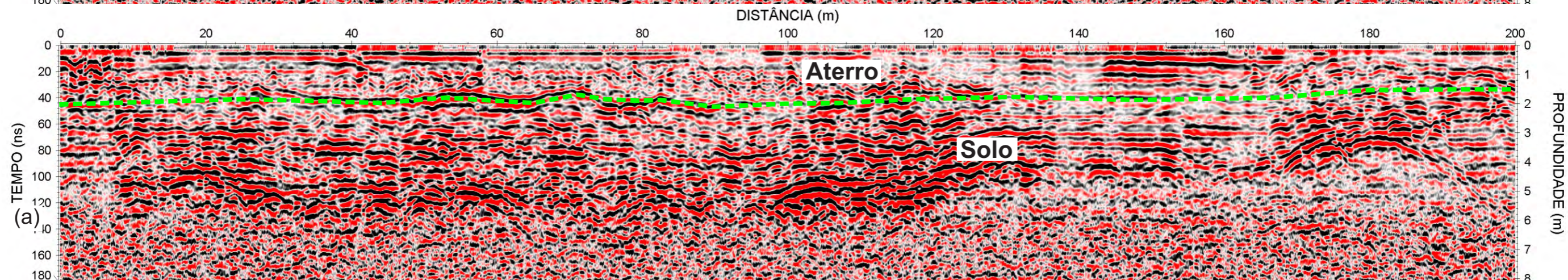
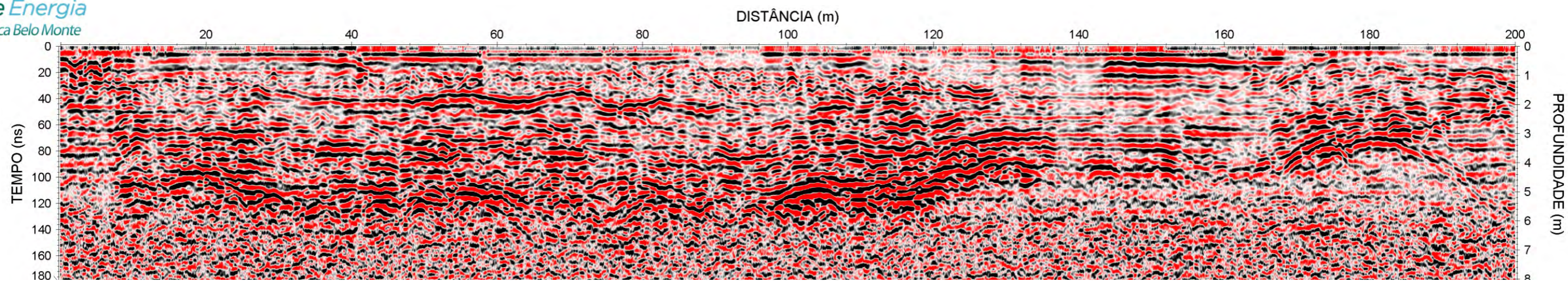




**ANEXO A16-** (a) Seção de GPR FILE\_111. (b) Seção interpretada.







ANEXO A19 - (a) Parte inicial da Seção de GPR FILE\_114. (b) Parte inicial da Seção interpretada. (c) Parte final da Seção de GPR FILE\_114. (d) Parte final da Seção interpretada.

