

Anexo 12.3.2-11 Relatório Fotográfico



Figura 12.3.2.4-23- *Rhaebo guttatus*



Figura 12.3.2.4-24- *Ceratophrys cornuta*



Figura 12.3.2.4-25- *Allobates femoralis*



Figura 12.3.2.4-26- *Dendropsophus leucophyllatus*



Figura 12.3.2.4-27- *Leptodactylus lineatus*



Figura 12.3.2.4-28- *Osteocephalus oophagus*





Figura 12.3.2.4-29- *Paleosuchus trigonatus*



Figura 12.3.2.4-30- *Rhinoclemmys punctularia*



Figura 12.3.2.4-31- *Amphisbaena alba*



Figura 12.3.2.4-32- *Tupinambis teguixim*



Figura 12.3.2.4-33- *Uranoscodon superciliosus*



Figura 12.3.2.4-34- *Ameiva ameiva*





Figura 12.3.2.4-35- *Cnemidophorus cryptus*



Figura 12.3.2.4-36- *Polychrus marmoratus*



Figura 12.3.2.4-37- *Bothrops atrox*



Figura 12.3.2.4-38- *Boa constrictor*



Figura 12.3.2.4-39- *Anilius scytale*



Figura 12.3.2.4-40- *Xenodon severus*





Figura 12.3.2.4-41- *Oxybelis fulgidus*



Figura 12.3.2.4-42- *Leptodeira annulata*



Figura 12.3.2.4-43- *Bradypus variegatus*



Figura 12.3.2.4-44- *Proechimys cuvieri*

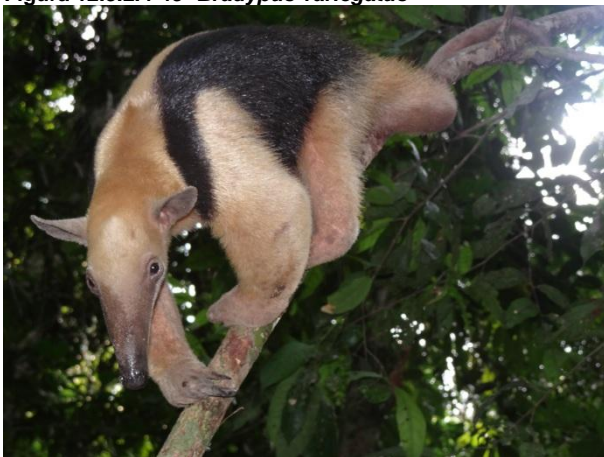


Figura 12.3.2.4-45- *Tamandua tetradactyla*

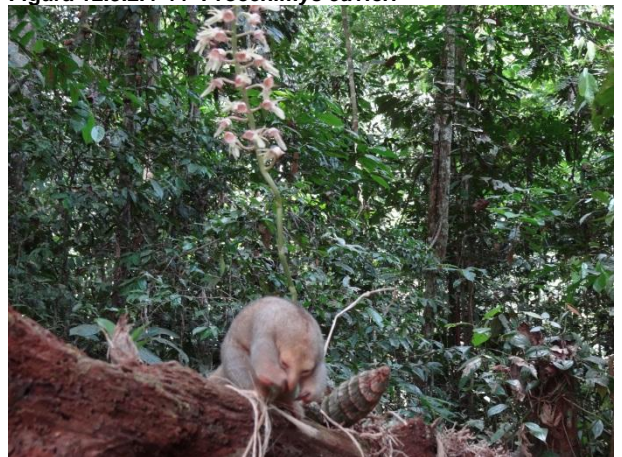


Figura 12.3.2.4-46- *Cyclopes didactylus*





Figura 12.3.2.4-48- filhote provável -*Mazama americana*



Figura 12.3.242-49- *Coendou prehensilis*