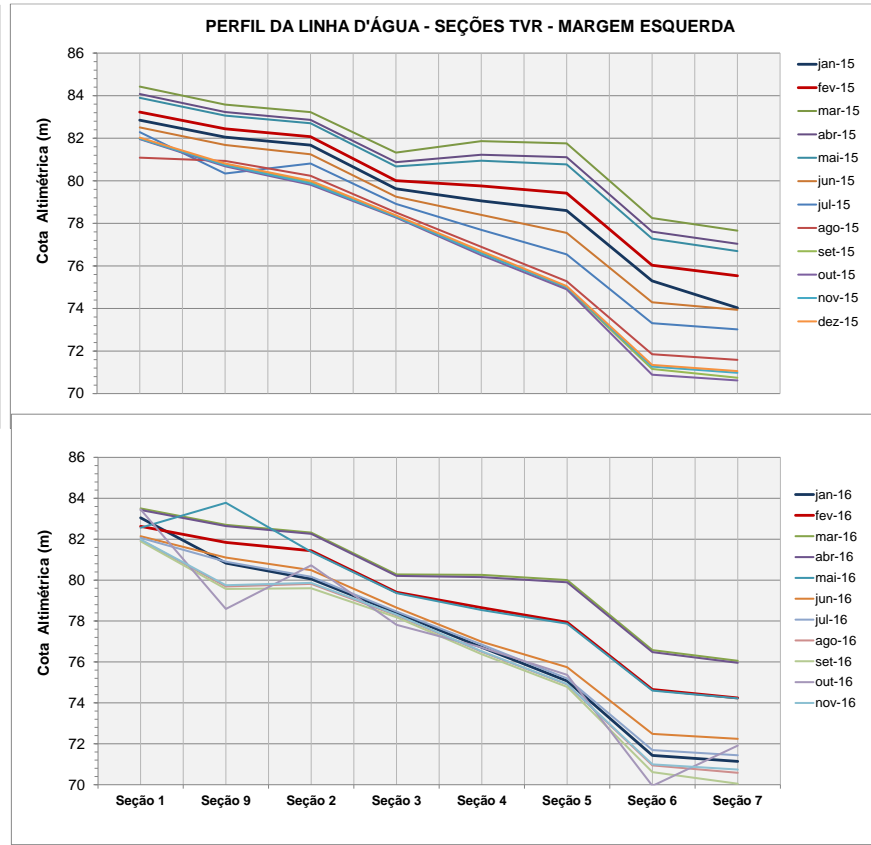
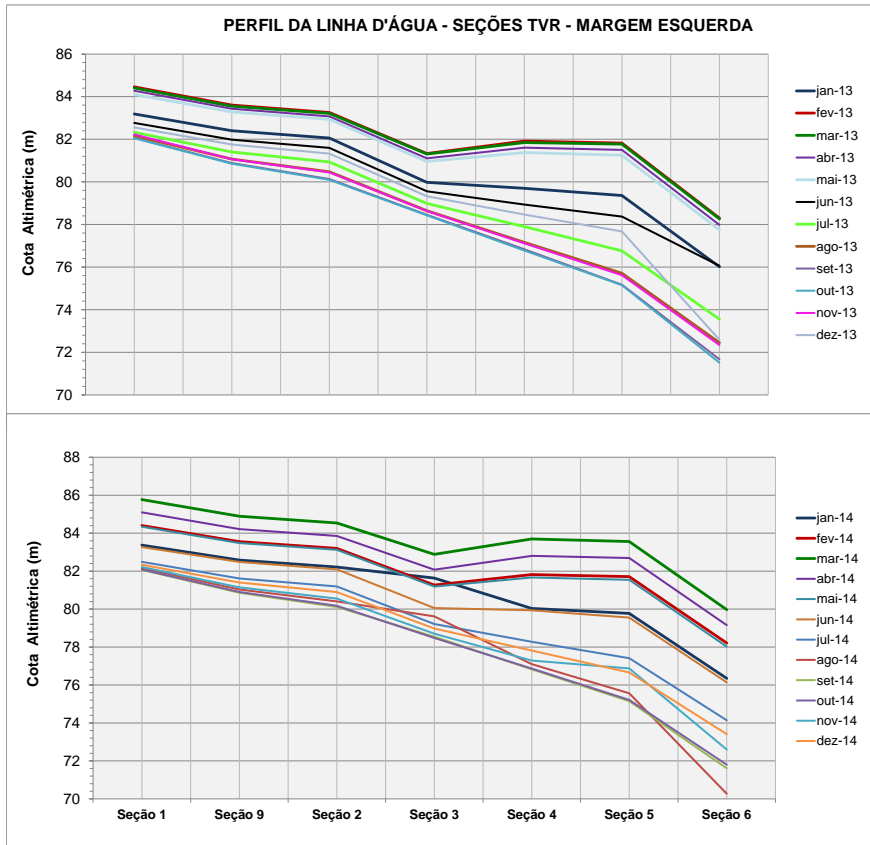


Perfis da Linha D'Água Simultâneos - TVR - Margem Direita.

Variação do Nível de Água do Rio Xingu no TVR - Margem Direita - Período de janeiro/2013 a novembro/2016

Mês	COTA ALTIMÉTRICA - RIO XINGU- TVR - MARGEM DIREITA (m)								
	Neris	Seção 1	Seção 9	Seção 2	Seção 3	Seção 4	Seção 5	Seção 6	Seção 7
jan-12				81.06	80.38	79.36	78.45	77.54	
fev-12	87.17	85.65		82.31	81.78	80.81	79.82	78.88	
mar-12	86.99	85.47		82.13	81.57	80.59	79.58	78.67	
abr-12					81.84	80.89	79.86	78.96	
mai-12	85.54	84.07	82.44	80.75	80.12	78.79	77.83	76.85	
jun-12	84.63	83.16	82.44	80.12	79.44	77.71	76.78	75.86	
jul-12	83.34	81.81	81.32	79.28	78.46	76.25	75.23	74.68	73.94
ago-12		81.26	80.91	78.89	78.01	75.36	76.63	74.21	73.89
set-12	82.63	80.95	80.71	78.72	77.71	77.08	76.31	73.95	73.69
out-12	82.77	81.10		78.80	77.88	77.21	76.48	74.10	73.82
nov-12	82.93	81.29	81.01	78.96	78.01	77.44	76.73	74.30	74.07
dez-12	83.93	83.47	81.90	79.63	78.96	78.83	78.00	75.26	76.15
jan-13	84.83	83.42	82.65	80.24	79.61	79.99	79.07	76.18	77.56
fev-13	86.53	85.02	83.94	81.59	81.05	82.02	81.03	78.18	79.80
mar-13	86.46	84.97	83.91	81.56	81.02	81.97	81.01	78.12	79.72
abr-13	86.26	84.81	83.78	81.39	80.83	81.73	80.74	77.84	79.43
mai-13	86.09	84.63	83.64	81.21	80.64	81.50	80.50	77.59	79.16
jun-13	84.27	82.84	82.20	79.88	79.20	79.29	78.40	75.58	76.69
jul-13	83.53	81.99	81.50	79.41	78.64	78.29	77.57	74.85	75.37
ago-13	83.09	81.45	81.10	79.07	78.26	77.65	76.99	74.48	76.69
set-13	82.85	81.18	80.87	78.87	77.98	77.32	76.63	74.20	73.99
out-13	82.81	81.13	80.82	78.83	77.92	77.25	76.57	74.14	73.89
nov-13	83.13	81.47	81.10	79.09	78.25	77.63	76.96	74.46	74.39
dez-13	83.99	82.50	81.89	79.65	78.98	78.84	78.03	75.25	76.06
jan-14	85.13	83.68	82.83	80.47	79.81	80.33	79.38	76.43	77.91
fev-14	86.52	84.99	83.88	81.59	81.00	81.93	80.97	78.08	79.71
mar-14	87.98	86.39	85.14	83.15	82.62	83.71	82.65	79.74	81.39
abr-14	87.28	85.71	84.51	82.35	81.80	82.83	81.82	78.94	80.56
mai-14	86.39	84.88	83.78	81.47	80.86	81.78	80.79	77.86	79.46
jun-14	84.45	83.53	82.72	80.36	79.70	80.15	79.21	76.27	77.71
jul-14	83.82	82.29	81.71	79.57	78.84	80.63	77.77	75.13	75.88
ago-14	83.07	81.52	81.04	79.03	78.21	77.57	76.94	74.42	74.34
set-14	82.83	81.16	80.86	78.86	77.95	77.28	76.59	74.16	73.97
out-14	82.87	81.22	80.90	78.89	78.02	77.33	76.65	74.21	74.11
nov-14	83.32	81.61	81.21	79.15	78.34	77.76	77.08	74.54	74.59
dez-14	83.53	81.98	81.48	79.37	78.64	78.24	77.48	74.84	75.23
jan-15	84.42	82.97	82.25	79.97	78.28	79.45	78.55	75.71	76.96

Mês	COTA ALTIMÉTRICA - RIO XINGU- TVR - MARGEM DIREITA (m)								
	Neris	Seção 1	Seção 9	Seção 2	Seção 3	Seção 4	Seção 5	Seção 6	Seção 7
fev-15	84.91	83.48	82.67	80.31	79.66	80.06	79.13	76.20	77.57
mar-15	86.38	84.06	83.91	81.61	81.04	81.97	80.99	78.09	79.73
abr-15	86.06	84.57	83.54	81.19	80.58	81.41	80.45	77.49	79.09
mai-15	85.85	84.38	83.38	80.99	80.38	81.13	80.17	77.19	78.74
jun-15	83.89	82.37	81.81	79.63	78.91	78.75	77.94	75.17	76.09
jul-15	83.47	81.89	81.42	79.32	77.57	78.18	77.41	74.82	75.17
ago-15	82.92	81.26	80.94	78.93	77.07	77.41	76.69	74.26	74.06
set-15	82.67	81.00	80.72	78.75	77.76	77.11	76.36	73.98	73.71
out-15	82.58	80.92	80.66	78.69	77.67	77.03	76.27	73.89	73.61
nov-15	82.63	80.97	80.72	78.75	77.76	77.16	76.41	74.01	73.73
dez-15	82.75	81.08	80.79	78.80	77.87	77.23	76.48	74.09	73.78
jan-16	82.79	81.12	80.81	78.83	77.91	77.26	76.54	74.12	73.84
fev-16	84.10	83.54	81.06	79.77	79.06	79.04	78.05	75.35	76.28
mar-16	85.27	83.82	82.95	80.58	79.95	80.53	79.58	76.62	78.09
abr-16	85.19	83.75	82.90	80.52	79.88	80.42	79.47	76.44	77.99
mai-16	84.04	82.54	81.94	79.73	79.02	77.98	78.12	75.31	76.28
jun-16		81.51	81.12	79.09	78.29	77.72	76.99	74.50	74.51
jul-16	82.87	81.21	81.89	78.98	78.02	77.35	76.64	74.22	73.93
ago-16	82.59	80.91	81.66	78.66	77.66	77.02	76.24	73.89	73.62
set-16		80.74	80.53	78.54	77.43	76.86	76.03	73.68	73.45
out-16	83.63	80.96	81.69	78.70	77.71	77.05	76.30	73.94	73.67
nov-16	82.63	80.96	81.69	78.71	77.72	76.09	76.31	73.95	73.65
NA máximo	87.98	86.39	85.14	83.15	82.62	83.71	82.65	79.74	81.39
Na mínimo	82.58	80.74	80.53	78.54	77.07	75.36	75.23	73.68	73.45
Diferença	5.4	5.65	4.61	4.61	5.55	8.35	7.42	6.06	7.94
maximo	mínimo								

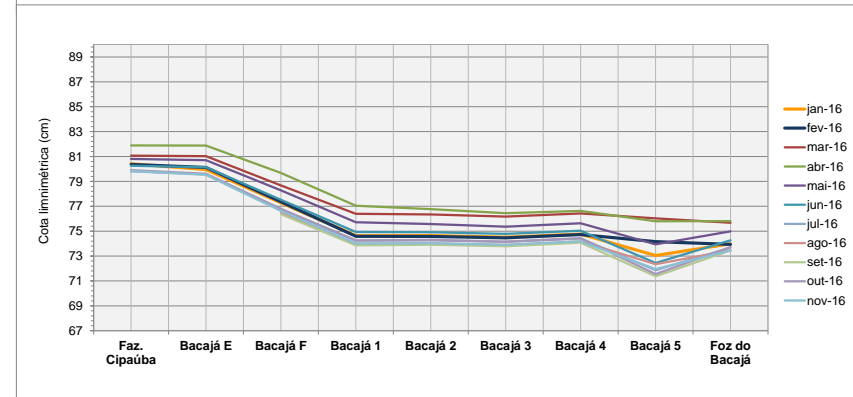
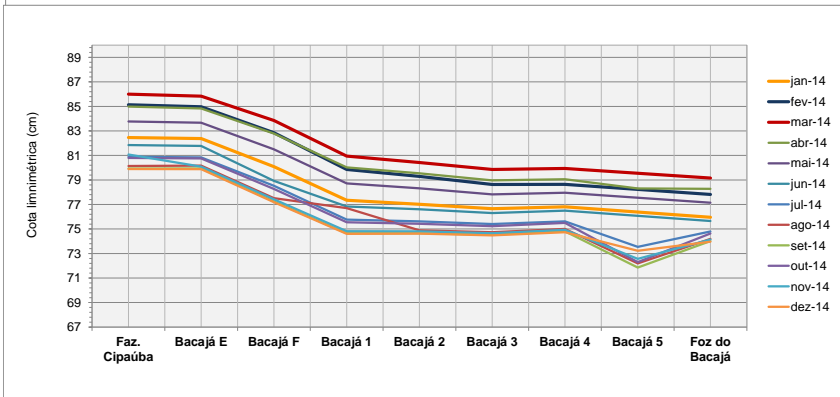
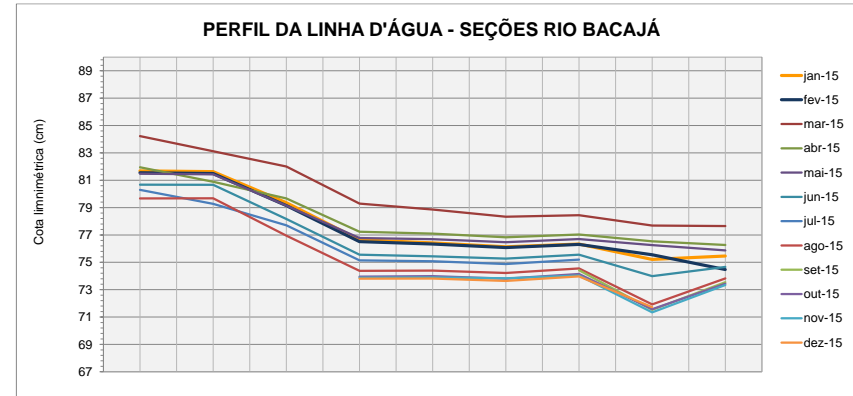
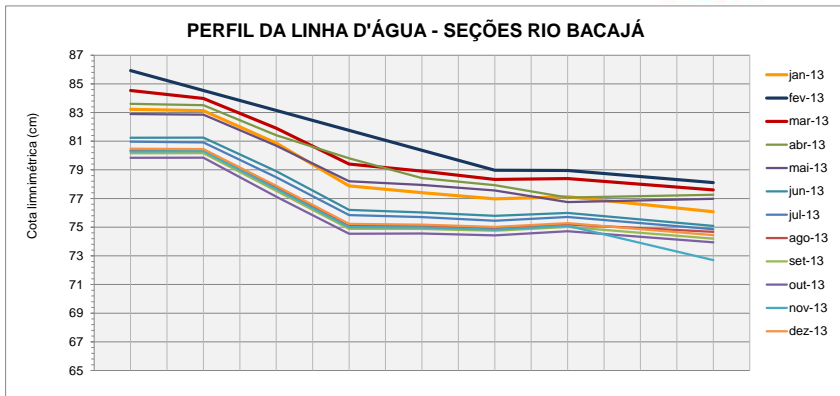


Perfis da Linha d'Água Simultâneo - TVR - Margem Esquerda.

Variação do Nível Água - Rio Xingu no TVR - Margem Esquerda - Período de janeiro/2013 a novembro/2016

Mês	COTA ALTIMÉTRICA - RIO XINGU- TVR - MARGEM ESQUERDA (m)							
	Seção 1	Seção 9	Seção 2	Seção 3	Seção 4	Seção 5	Seção 6	Seção 7
jan-12	83.95		82.72	80.73	79.40	78.28	73.40	74.21
fev-12			83.86		80.68	79.65	75.10	75.46
mar-12	84.94		83.69	81.86	80.53	79.36	74.89	75.24
abr-12	85.71		83.91	82.14	80.86	79.74	75.17	75.54
mai-12	83.76	82.20	82.13	80.69	78.47	77.41	72.72	73.68
jun-12	82.98	82.20	81.84	79.79	77.34	75.90	71.67	72.09
jul-12	82.27	81.20	81.72	78.85		74.88	71.00	71.24
ago-12	82.09		81.18	78.50	76.87	76.21	69.74	71.46
set-12	81.99	80.73	79.90	78.32	76.56	74.94	71.05	70.69
out-12	82.04	80.84	80.06	78.40	76.70	75.05	71.39	71.02
nov-12	82.11	80.95	80.26	78.53	76.91	75.30	71.91	71.63
dez-12	82.56	81.73	81.33	79.31	78.45	77.70	74.44	74.10
jan-13	83.19	82.40	82.06	79.98	79.70	79.36	76.01	75.54
fev-13	84.46	83.60	83.26	81.33	81.92	81.82	78.30	77.75
mar-13	84.41	83.55	83.22	81.31	81.85	81.77	78.26	77.65
abr-13	84.28	83.43	83.08	81.11	81.61	81.50	77.98	77.39
mai-13	84.10	83.28	82.94	80.96	81.38	81.25	77.75	77.17
jun-13	82.77	81.98	81.60	79.56	78.94	78.37	76.06	74.65
jul-13	82.33	81.40	80.94	78.99	77.90	76.76	73.55	75.26
ago-13	82.16	81.07	80.48	78.65	77.16	75.71	72.45	72.19
set-13	82.06	80.88	80.14	78.46	76.84	75.17	71.67	71.42
out-13	82.05	80.85	80.10	78.43	76.78	75.15	71.51	71.24
nov-13	82.23	81.06	80.45	78.63	77.12	75.62	72.34	72.10
dez-13	82.56	81.75	81.33	79.33	78.47	77.67	72.59	74.03
jan-14	83.37	82.58	82.22	81.64	80.04	79.77	76.35	75.86
fev-14	84.40	83.55	83.20	81.27	81.82	81.71	78.21	77.64
mar-14	85.77	84.89	84.54	82.89	83.70	83.56	79.97	79.30
abr-14	85.10	84.21	83.86	82.08	82.81	82.69	79.15	78.49
mai-14	84.34	83.48	83.13	81.19	81.67	81.54	78.02	77.42
jun-14	83.27	82.48	82.10	80.06	79.94	79.55	76.14	75.66
jul-14	82.49	81.61	81.20	79.22	78.28	77.41	74.14	73.82
ago-14	82.16	81.03	80.41	79.62	77.10	75.56	70.27	72.01
set-14	82.07	80.86	80.12	78.55	76.83	75.15	71.61	71.35
out-14	82.08	80.90	80.18	78.48	76.87	75.21	71.80	71.58
nov-14	82.22	81.14	80.56	78.71	77.29	76.87	72.60	71.66
dez-14	82.34	81.40	80.90	78.98	77.82	76.66	73.41	73.12

Mês	COTA ALTIMÉTRICA - RIO XINGU- TVR - MARGEM ESQUERDA (m)							
	Seção 1	Seção 9	Seção 2	Seção 3	Seção 4	Seção 5	Seção 6	Seção 7
jan-15	82.85	82.05	81.68	79.63	79.06	78.60	75.30	74.03
fev-15	83.23	82.44	82.08	80.01	79.76	79.42	76.03	75.54
mar-15	84.43	83.58	83.23	81.33	81.87	81.76	78.25	77.66
abr-15	84.08	83.23	82.87	80.88	81.23	81.11	77.61	77.04
mai-15	83.90	83.06	82.71	80.68	80.95	80.77	77.28	76.70
jun-15	82.51	81.68	81.25	79.26	78.40	77.55	74.29	73.94
jul-15	82.29	80.34	80.82	78.92	77.70	76.54	73.31	73.02
ago-15	81.09	80.93	80.24	78.52	76.90	75.28	71.85	71.59
set-15	81.99	80.75	79.96	78.34	76.63	74.97	71.16	70.75
out-15	81.96	80.68	79.82	78.28	76.51	74.90	70.89	70.62
nov-15	81.98	80.73	79.88	78.32	76.59	75.00	71.27	70.98
dez-15	82.03	80.81	80.01	78.38	76.70	75.05	71.35	71.06
jan-16	83.05	80.83	80.06	78.41	76.72	75.07	71.43	71.14
fev-16	82.63	81.84	81.44	79.41	78.65	77.94	74.65	74.24
mar-16	83.51	82.70	82.33	80.28	80.26	80.00	76.58	76.06
abr-16	83.43	82.64	82.27	80.21	80.15	79.89	76.48	75.96
mai-16	82.56	83.78	81.39	79.37	78.54	77.87	74.60	74.22
jun-16	82.15	81.10	80.49	78.66	76.99	75.74	72.48	72.24
jul-16	82.07	80.90	80.17	78.47	76.85	75.19	71.69	71.44
ago-16	81.97	79.69	79.82	78.28	76.50	74.90	70.94	70.58
set-16	81.90	79.57	79.61	78.19	76.38	74.78	70.61	70.05
out-16	83.46	78.59	80.73	77.82	76.71	75.37	69.94	71.91
nov-16	81.99	79.75	79.87	78.32	76.52	74.92	70.99	70.74
NA máximo	85.77	84.89	84.54	82.89	83.70	83.56	79.97	79.30
Na mínimo	81.09	78.59	79.61	77.82	76.38	74.78	69.74	70.05
Diferença	4.68	6.30	4.93	5.07	7.32	8.78	10.23	9.25
maximo	mínimo							



Perfil da Linha d'Água Simultâneo - Rio Bacajá.

Variação do Nível Água - Rio Bacajá - Período de janeiro/2013 a novembro/2016

Mês	COTAS ALTIMÉTRICAS - RIO BACAJÁ (cm)								
	Faz. Cipaúba	Bac. E	Bac. F	Bac. 1	Bac. 2	Bac. 3	Bac. 4	Bac. 5	Foz do Bacajá
jul-12	80.42	80.39	77.83	75.23	75.16	74.98	75.25		73.41
ago-12	79.81	79.79	77.09	74.49	74.50	74.36	74.64		73.86
set-12	79.56	79.58	76.79	74.24	74.25	74.10	74.39		73.65
out-12	78.61	79.65	76.89	74.32	74.33	74.23	74.51		73.71
nov-12	79.62	79.65	76.87	74.22	74.24	74.14	74.40		73.64
dez-12	81.32	81.31	78.95	76.21	76.03	75.78	75.99		75.10
jan-13	83.22	83.13	80.87	77.88	77.41	76.98	77.12		76.08
fev-13	85.92					78.97	78.95		78.11
mar-13	84.53	83.98	81.91	79.40	78.91	78.33	78.39		77.60
abr-13	83.60	83.51	81.42	79.80	78.42	77.93	77.06		77.26
mai-13	82.89	82.85	80.69	78.20	77.95	77.56	76.75		76.98
jun-13	81.24	81.25	78.91	76.20	76.03	75.79	75.99		75.09
jul-13	80.96	80.92	78.49	75.84	75.70	75.45	75.71		74.86
ago-13	80.35	80.37	77.78	75.08	75.07	74.93	75.19		74.67
set-13	80.15	80.17	77.54	74.88	74.88	74.75	75.01		74.20
out-13	79.84	79.85	77.13	74.54	74.56	74.43	74.71		73.94
nov-13	80.28	80.31	77.68	75.01	74.98	74.82	75.09		72.70
dez-13	80.47	80.45	77.89	75.23	75.18	75.02	75.28		74.44
jan-14	82.46	82.38	80.09	77.34	77.02	76.66	76.81		75.96
fev-14	85.13	84.97	82.86	79.86	79.29	78.63	78.64		77.82
mar-14	86.00	85.84	83.85	80.95	80.42	79.86	79.93		79.16
abr-14	84.98	84.83	82.79	80.03	79.54	78.97	79.05	78.31	78.28
mai-14	83.77	83.67	81.50	78.72	78.32	77.83	77.95		77.14
jun-14	81.84	81.78	78.93	76.83	76.61	76.30	76.49		75.65
jul-14	80.89	80.84	78.53	75.76	75.62	75.41	75.62	73.54	74.80
ago-14	80.14	80.17	77.52	76.70	74.89	74.74	75.00	72.20	74.19
set-14	79.93	79.95	77.25	74.65	74.66	74.53	74.80	71.86	74.02
out-14	80.79	80.76	78.27	75.55	75.43	75.23	75.49	72.30	74.63
nov-14	81.07	80.09	77.43	74.82	74.81	74.66	74.93	72.57	74.14
dez-14	79.89	79.89	77.19	74.60	74.62	74.48	74.73	73.22	73.96
jan-15	81.68	81.63	79.37	76.65	76.42	76.13	76.33	75.21	75.46
fev-15	81.54	81.49	79.15	76.51	76.34	76.08	76.30	75.55	74.47
mar-15	84.22	83.12	82.01	79.29	78.86	78.33	78.44	77.69	77.65
abr-15	81.94	80.89	79.67	77.23	77.10	76.83	77.03	76.53	76.27
mai-15	81.47	81.43	79.15	76.77	76.69	76.47	76.70	76.26	75.87

jun-15	80.67	80.67	78.17	75.56	75.44	75.27	75.55	73.99	74.66
jul-15	80.29	79.28	77.71	75.14	75.08	74.88	75.19		74.37
ago-15	79.67	79.68	76.95	74.38	74.40	74.22	74.55	71.92	73.82
set-15	79.65						74.42	71.53	73.55
out-15	79.36			73.95	73.99	73.81	74.14	71.57	73.44
nov-15				73.88	73.90	73.83	74.03	71.34	73.34
dez-15				73.80	73.82	73.64	73.97	71.72	
jan-16	80.41	79.95	77.29	74.64	74.65	74.52	74.77	73.05	73.99
fev-16	80.36	80.12	77.37	74.59	74.58	74.47	74.72	74.16	73.94
mar-16	81.07	81.03	78.68	76.40	76.35	76.17	76.42	76.03	75.68
abr-16	81.89	81.88	79.69	77.04	76.77	76.45	76.63	75.80	75.81
mai-16	80.80	80.71	78.29	75.72	75.58	75.36	75.63	73.94	74.99
jun-16	80.25	80.14	77.53	74.94	74.92	74.79	75.03	72.44	74.27
jul-16	79.81	79.57	76.78	74.24	74.27	74.15	74.41	71.87	73.68
ago-16			76.50	73.98	74.02	73.89	74.17	72.35	73.46
set-16			76.37	73.86	73.91	73.79	74.07	71.38	73.46
out-16	79.90	79.61	76.80	74.26	74.30	74.16	74.44	71.55	73.72
nov-16	79.83	79.53	76.63	74.01	74.02	73.90	74.17	71.96	73.45
NA máximo	86.00	85.84	83.85	80.95	80.42	79.86	79.93	78.31	79.16
Na mínimo	78.61	79.28	76.37	73.80	73.82	73.64	73.97	71.34	72.70
Diferença	7.39	6.56	7.48	7.15	6.60	6.22	5.96	6.97	6.46
	maximo		mínimo						