

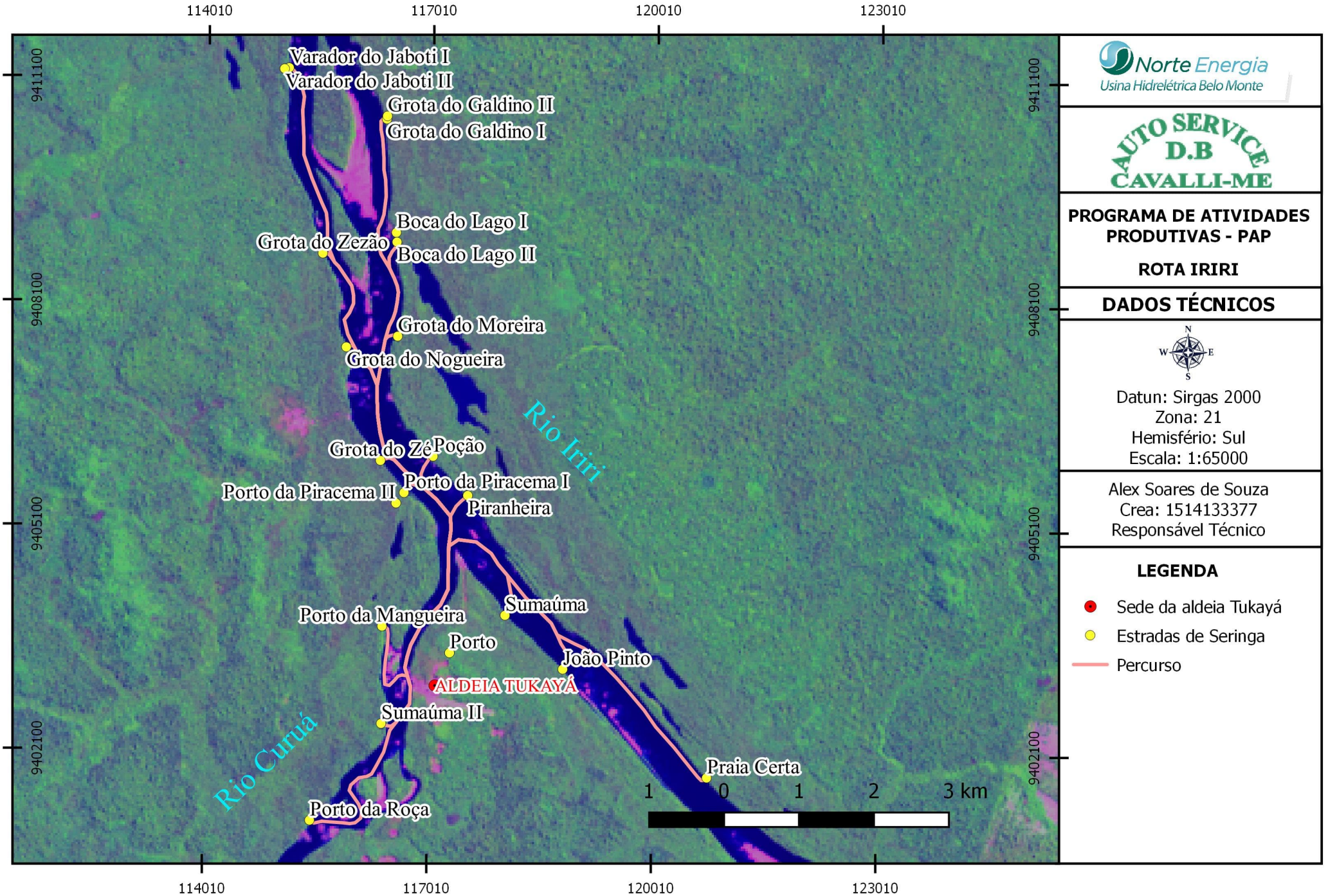


**CAPÍTULO 02 – ANDAMENTO DO PROJETO BÁSICO AMBIENTAL DO
COMPONENTE INDÍGENA**

**Anexo 7.2-64 Mapas das estradas de seringa – TI
Xipaya.**

TI XIPAYA

Estradas de seringa da aldeia Tukayá

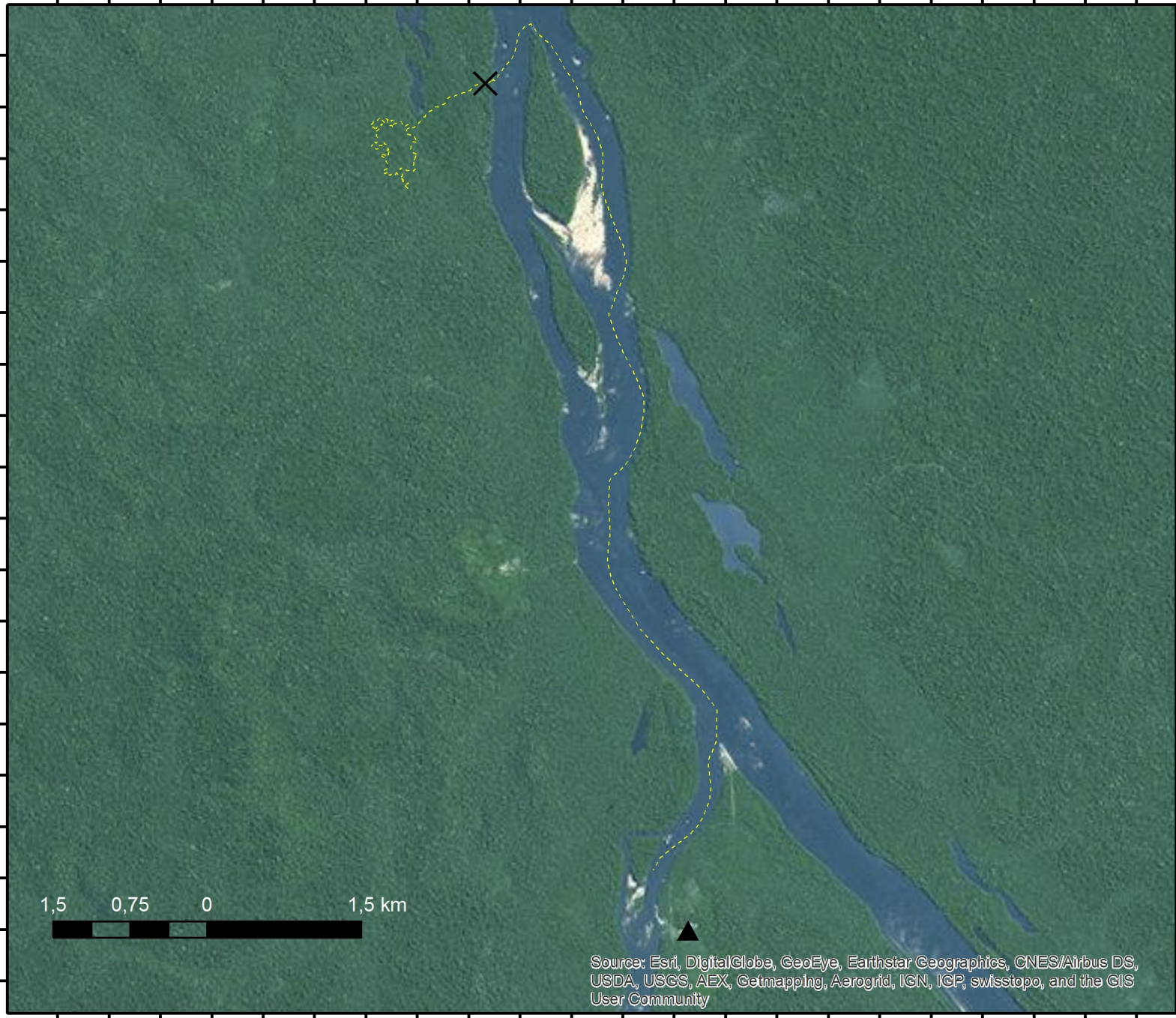


TI XIPAYA

Estrada de seringa I do varador do jaboti da aldeia Tukayá

776000 777000 778000 779000 780000 781000 782000 783000 784000 785000 786000

9412000
9411000
9410000
9409000
9408000
9407000
9406000
9405000
9404000
9403000



**PROGRAMA DE
ATIVIDADES
PRODUTIVAS - PAP**

ROTA IRIRI

DADOS TÉCNICOS

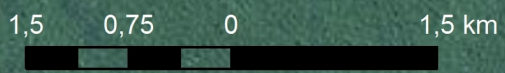


Datum: Sirgas 2000
Zona: 21
Hemisfério: Sul
Escala: 1:55000

Alex Soares de Souza
CREA: 1514133377
Responsável Técnico

Legenda

- ▲ Tukayá
- ✕ Entrada da estrada de seringa
- - - Deslocamento - 14,68 km



Source: Esri, DigitalGlobe, GeoEye, Earthstar Geographics, CNES/Airbus DS, USDA, USGS, AEX, Getmapping, Aerogrid, IGN, IGP, swisstopo, and the GIS User Community

776000 777000 778000 779000 780000 781000 782000 783000 784000 785000 786000

TI XIPAYA

Parte da estrada de seringa visitada da aldeia Tukayá



 **Norte Energia**
Usina Hidrelétrica Belo Monte

CAUTO SERVICE
D.B
CAVALLI-ME

**PROGRAMA DE
ATIVIDADES
PRODUTIVAS - PAP**

ROTA IRIRI

DADOS TÉCNICOS



Datum: Sirgas 2000

Zona: 21

Hemisfério: Sul





Escala: 1:5000

Alex Soares de Souza

CREA: 1514133377

Responsável Técnico

Legenda

-  Tukayá
-  Entrada da estrada
-  Seringueiras
-  Deslocamento (1,1 km)

TI XIPAYA

Inventário Estrada de seringa I do varador do jaboti da aldeia Tukayá

779000

779500

780000

9411500

9411000

779000

779500

780000



 **Norte Energia**
Usina Hidrelétrica Belo Monte

AUTO SERVICE
D.B
CAVALLI-ME

PROGRAMA DE
ATIVIDADES
PRODUTIVAS - PAP

ROTA IRIRI

DADOS TÉCNICOS



Datum: Sirgas 2000

Zona: 21

Hemisfério: Sul





Escala: 1:6000

Alex Soares de Souza

CREA: 1514133377

Responsável Técnico

Legenda

-  Tukayá
-  Entrada da estrada de seringa
-  Seringueiras
-  Deslocamento - 14,68 km

Source: Esri, DigitalGlobe, GeoEye, Earthstar Geographics, CNES/Airbus DS, USDA, USGS, AEX, Getmapping, Aerogrid, IGN, IGP, swisstopo, and the GIS User Community