

LEGENDAS

Table with two columns: EXISTENTE and PROJETO. Lists various engineering symbols and their corresponding descriptions for existing and proposed infrastructure.

Table with two columns: CADASTRO and PROJETO. Lists symbols for cadastral and project features like manholes, culverts, and drainage.

Table with two columns: CADASTRO and PROJETO. Lists symbols for cadastral and project features like manholes, culverts, and drainage.

Table with two columns: CADASTRO and PROJETO. Lists symbols for cadastral and project features like manholes, culverts, and drainage.

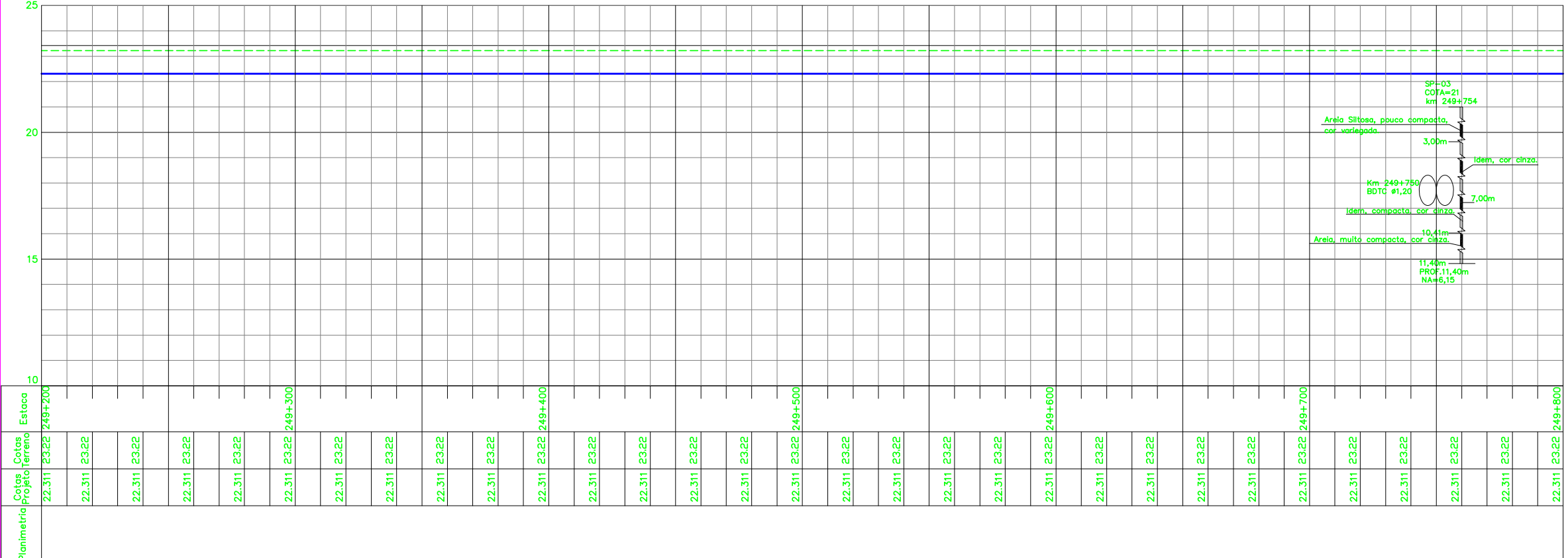
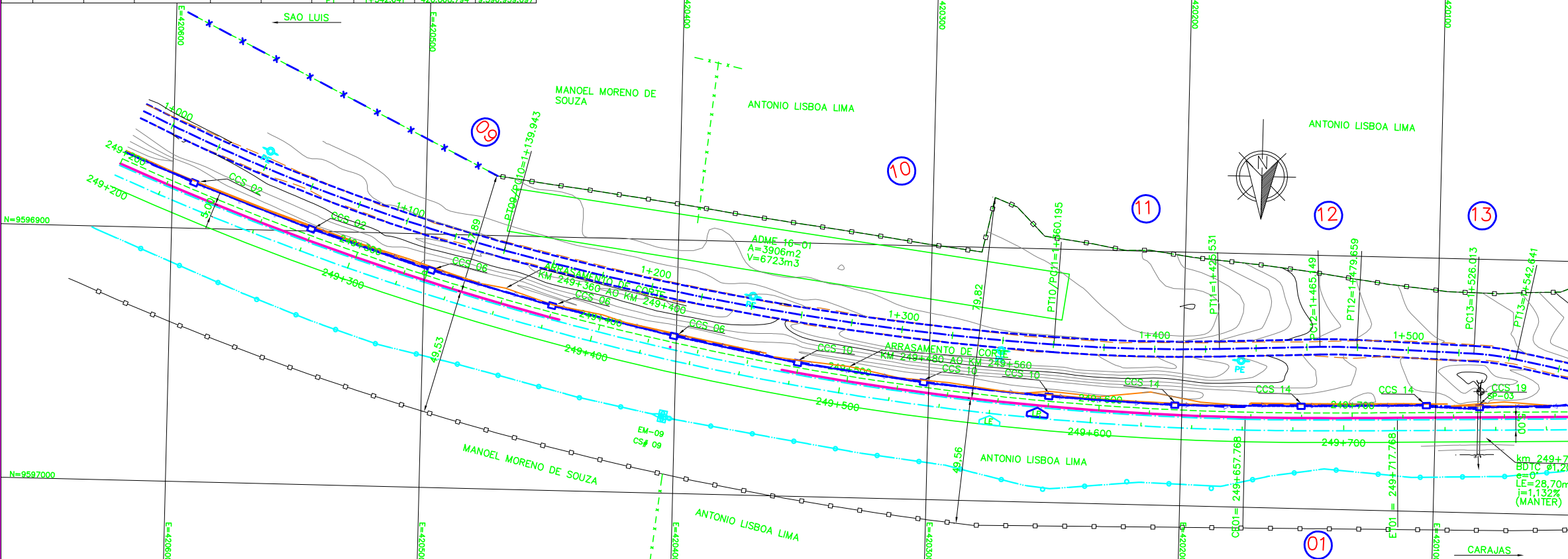


Table titled 'QUADRO DE CURVAS - ESTRADA DE SERVIÇO' showing curve data including curve number, radius, length, angle, and stationing.

Table titled 'QUADRO DE CURVAS - FERROVIA' showing curve data for the railway line, including curve number, radius, length, angle, and stationing.



NOTAS
1. AS MEDIDAS ESTAO EM METRO, EXCETO ONDE INDICADO.
2. AS COORDENADAS ESTAO NO SISTEMA UTM SAD-89, MC -45 (CVRD).

Table titled 'DOCUMENTOS DE REFERENCIA' listing technical specifications and drawing numbers (GEO: 234K-B-06562, TOP: 234K-Y-06562).

Table titled 'REVISOES' showing a revision log with columns for revision number, date, and description.

Project information block including logos for VALE, ODEBRECHT, and Prodec. It also contains the program name 'PROGRAMA CAPACITACAO LOGISTICA NORTE N1030-02', project location 'FERROVIA - KM 000,00 A KM 331,03', and drawing details like 'GEOMETRIA FERROVIA - KM 249+200 AO KM 249+800' and '234K-B-06566'.